

Offshore Supply
Emergency Response and Rescue
Infrastructure Support
Oceanographic & Government Patrol

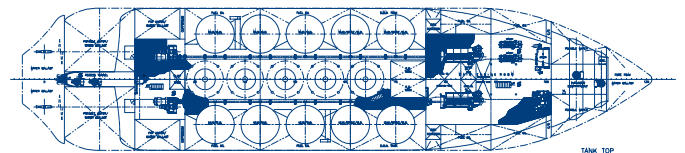
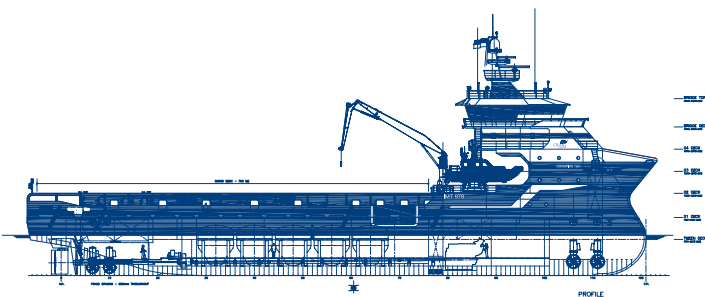


IMT 978

Grampian Talisman

Build Yard > Balenciaga, Spain

Date of Build: 2007



North Star Shipping (Aberdeen) Ltd
12 Queens Road, Aberdeen AB15 4ZT

T +44 (0) 1224 261400
F +44 (0) 1224 261401

Flying the flag for Safety, Service and Quality
www.northstarshipping.co.uk

IMT 978 Platform Supply Vessel (DP II) / ERRV Class B

Specifications

DP II PSV / Class B ERRV

DIMENSIONS

LOA	78.2 metres
LBP	72.8 metres
Breadth Moulded	17.0 metres
Draft Loaded / Depth	5.5 metres

TONNAGE

GRT	2955 Tonnes
NRT	886 Tonnes
DWT	3890 Tonnes

CAPACITIES AND CRANES

Fuel Oil (MGO) / Connection	1484 m ³
Fresh Water / Connection	790 m ³
Ballast Water	690 m ³ – 1998 m ³
Oil Based Mud(s)	559.5 m ³ (3519 bbls)
Base Oil	233.6 m ³ (1,469 bbls)
Brine(s)	374 m ³ (2,352 bbls)
Dry Bulk(s) / Connection	264.5 m ³ / 5 Tanks
Deck Area	790 m ²
Deck Loading	5 Tonnes per metre
Deck Crane # 1	Dreggen 30 Tonne-metre knuckle boom
Deck Crane # 2	N/A
Deck Crane # 3	N/A
Tank Washing System	Fully Fitted

OIL RECOVERY SYSTEM

Recovery Tank	400t Oil Recovery Tanks (UK Code)
Deck Tuggers	2 x 10 tonnes tuggers

ENGINES/THRUSTERS/AUX

Main Engine(s)	2 x MAK 6M25 @ 2800 BHP each
Propeller(s)	2 x CPP units
Azimuth Thruster(s)	N/A
Bow Thruster(s)	2 x Schottel Tunnels @ 800 BHP
Stern Thruster(s)	2 x Schottel Tunnels @ 800 BHP each
Rudder Systems / Type	2 x Fishtail Hi-Lift Rudder
Aux Engines	2 x Cat 3406 Auxiliaries Diesels
Shaft PTOs	2 x Stamford PTO from Main Engine(s)
Emergency Generators	1 x Cummins Emer Genset

CONTROL SYSTEMS AND DYNAMIC POSITIONING

Control Positions	Fwd, Aft, Port & Stbd consoles
Full Manual Control	Fwd & Aft consoles
Integrated Joystick Control	Kongsberg
Joystick Control	Kongsberg C-Joy
Dynamic Positioning System	Kongsberg DP II System
RadaScan	Fitted
CyScan	Fitted
Hydro Acoustic Pos Ref # 1	Option
DGPS	Fitted

RESCUE AND VESSEL EQUIPMENT

Outfitted in compliance with UK Standby Regulations

Fast Rescue Craft Davit # 1	Grampian Hydraulics Davit System
Fast Rescue Craft	15 Man Avon FRC/FRB
Daughter Craft Davit	2 x Grampian Hydraulics Davit System
Daughter Craft	2 x Delta Phantom Daughter Craft / FRC
Recovery Rooms	ERRV Class B compliant
Hospital	ERRV Class B compliant
Dacon Scoop	Option
Dacon Rescue Crane	Option
Cosalt Rescue Basket	Option
Jason Cradles Frames	Option
Winch Area	Fitted
Emer. Towing Capability	N/A
Dispersant Tanks	Fitted
Dispersant Spray Booms	Fitted
Searchlights	4 x Wheelhouse mounted & remote operated

NAVIGATION AND COMMUNICATION EQUIPMENT

Radar (Fwd)	1 x Furuno X Band	1 x Furuno Y Band
ECDIS	Fitted	
PLB System	N/A	
DGPS(s)	2 Furuno DGPS or eqv	
Gyro(s)	3 x Anschutz S22 Gyro	
Autopilot	Anschutz Nautopilot	
Magnetic Comp	1 x Magnetic Compass	
Echo Sounder	FE 700 ES	
Digital Depth Recorder	FE 720	
Navtex	Furuno NX 700	
Sat Comms	Fully fitted and A3 compliant	
MF/HF Radio	1 x Furuno	
UHF	N/A	
VHF (Fwd)	Fully fitted	
VHF (Aft)	Fully fitted	
Helo Radio	N/A	
AIS	Jotron AIS TR 2500	
VHF Direction Finder	Furuno DF FD 527	
Doppler Log	Tbc	
SSAS	Furuno Felcom	
Portable VHF	3 x Navico GMDSS	
UHF Base	Fully fitted	
Portable UHF	Fully fitted	
Sonic Helmets	Fully fitted	
Smartpatch Phone	Fully fitted	

CREW FACILITIES

Crew Cabins	18 Man Single cabins c/w en suite facilities, Hospital & Survivor Areas in compliance with the UK ERRV Code
Recreation & Leisure	1 Messroom, 2 Lounges, Sat TV System
Leisure	1 x Ship's Office