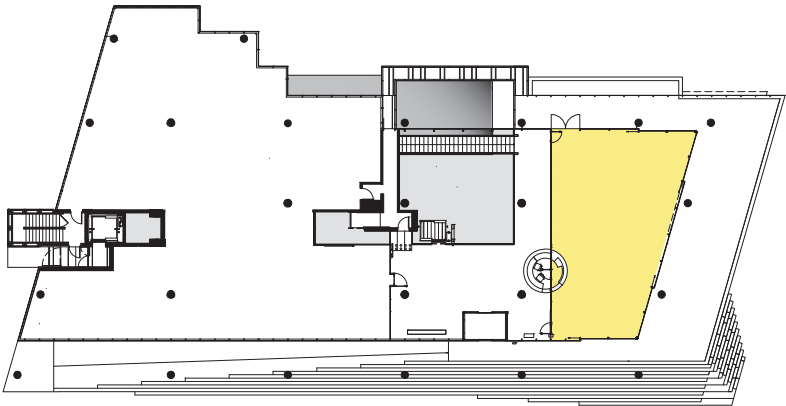


# The Anna Lindh Hall

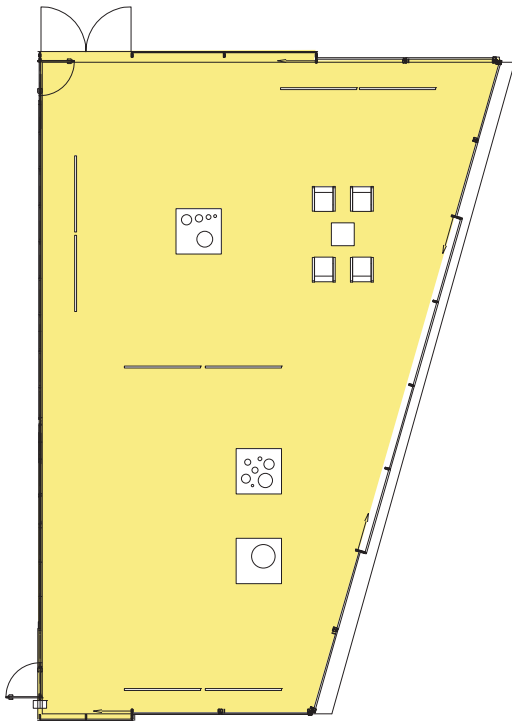
Anna Lindh Hall is House of Sweden’s most popular space. Its glass walls bring the outdoors inside, providing event-goers with spectacular views of both the Potomac River and Rock Creek. Its entrance is flanked by two ten-foot-high running waterfalls – a great photo backdrop! Four sliding glass doors open up directly onto House of Sweden’s stone terrace.

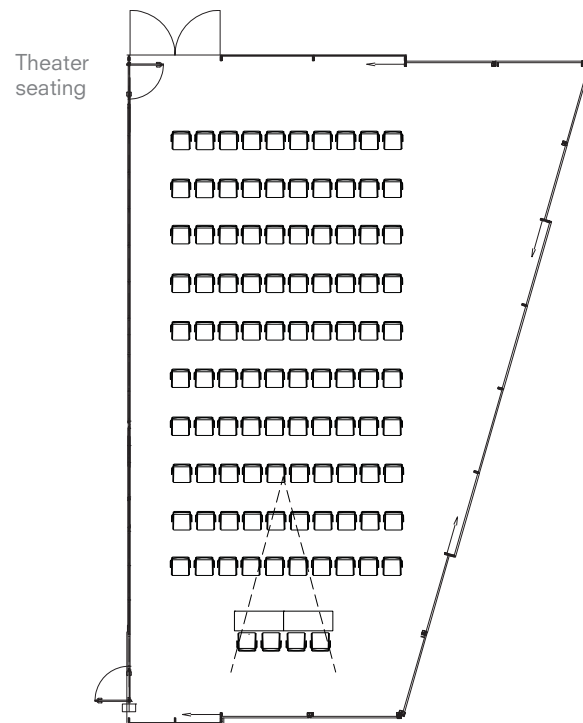
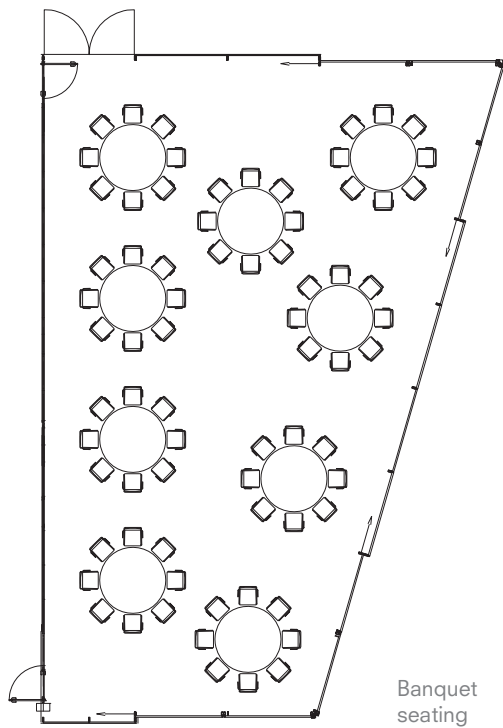


## Meeting Capacities

Room	Dimension (ft)	Size (sq.ft.)	Size (sq.m)	Ht. ft.	Capacities Banquet	Theater	Reception
The Anna Lindh Hall	32x57	1840	171	10'-0"	100 pers	100 pers	100 pers

Example of exhibition  
layout  
- see opposite page for  
conference layouts





# HOUSE OF SWEDEN

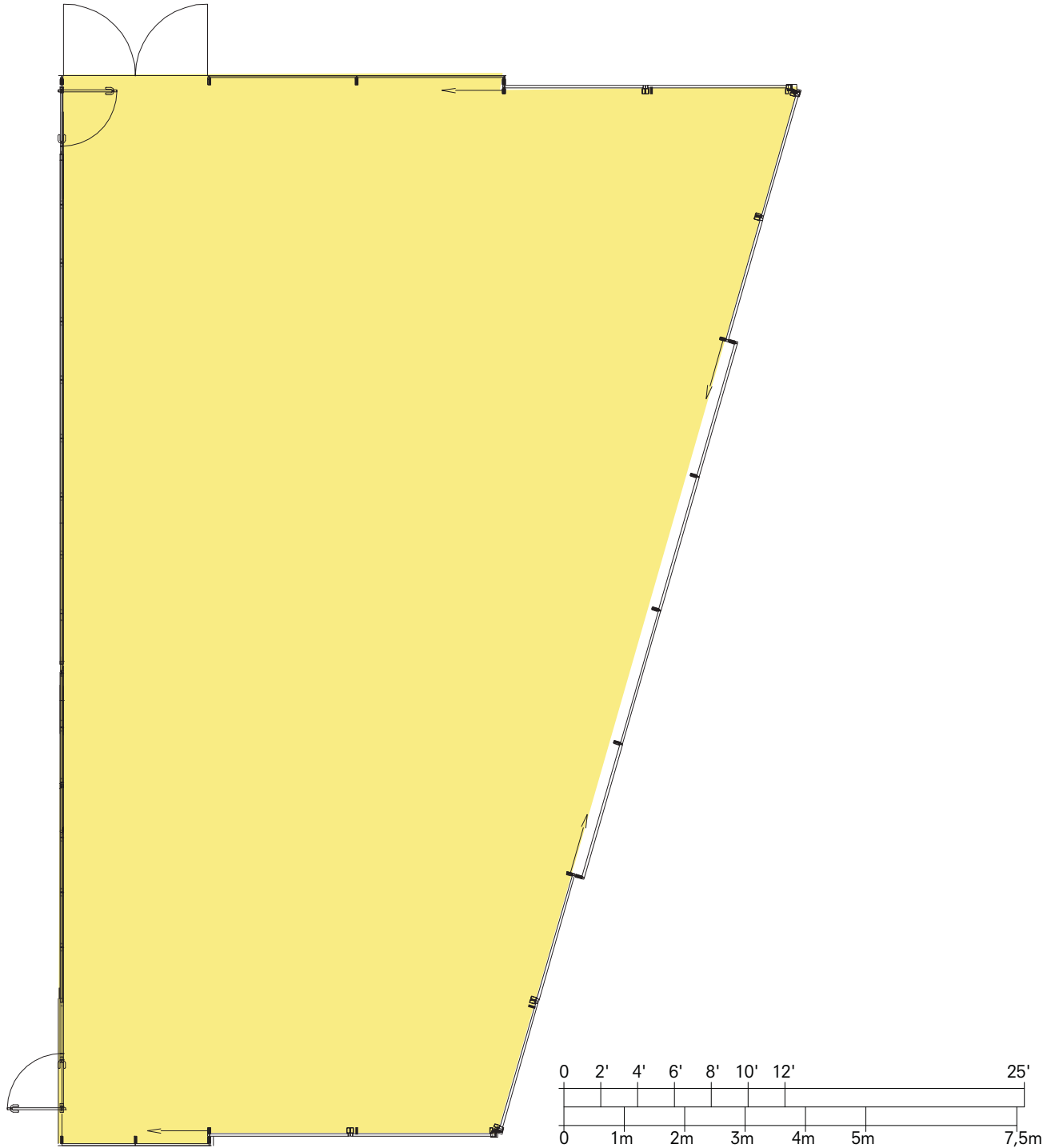
House of Sweden, 2900 K Street NW, Washington DC 20007  
+1 202 536 1500

[info@houseofsweden.com](mailto:info@houseofsweden.com)

[www.houseofsweden.com](http://www.houseofsweden.com)

House of Sweden is a registered trademark owned and managed by the Swedish state through the National Property Board Sweden

# The Anna Lindh Hall



# HOUSE OF SWEDEN

House of Sweden, 2900 K Street NW, Washington DC 20007

+1 202 536 1500

[info@houseofsweden.com](mailto:info@houseofsweden.com)

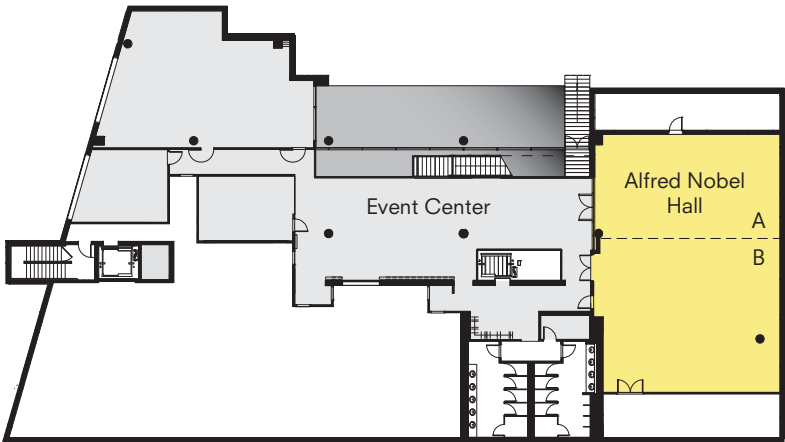
[www.houseofsweden.com](http://www.houseofsweden.com)

House of Sweden is a registered trademark owned and managed by the Swedish state through the National Property Board Sweden



# Alfred Nobel Hall

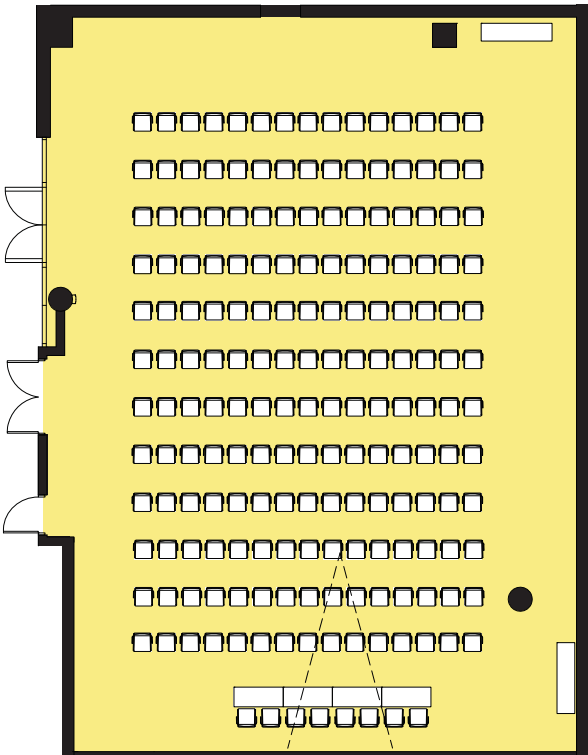
The spacious Alfred Nobel Hall can be used for exhibitions, receptions, seminars and meetings. It boasts state-of-the-art audio and visual equipment, and its excellent acoustics make it a choice space for concerts. A removable stage is available and comes in different sizes and configurations. The hall can be subdivided into two separate spaces, which can be used either individually or together.

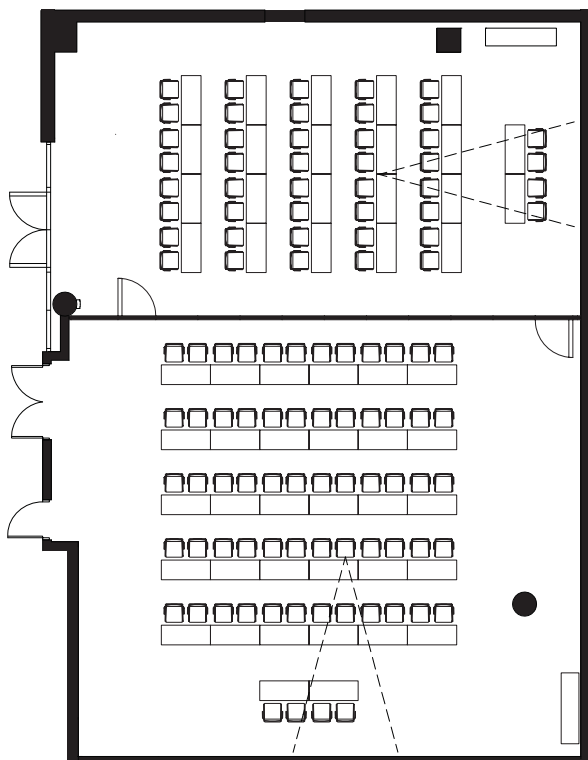


## Meeting capacities

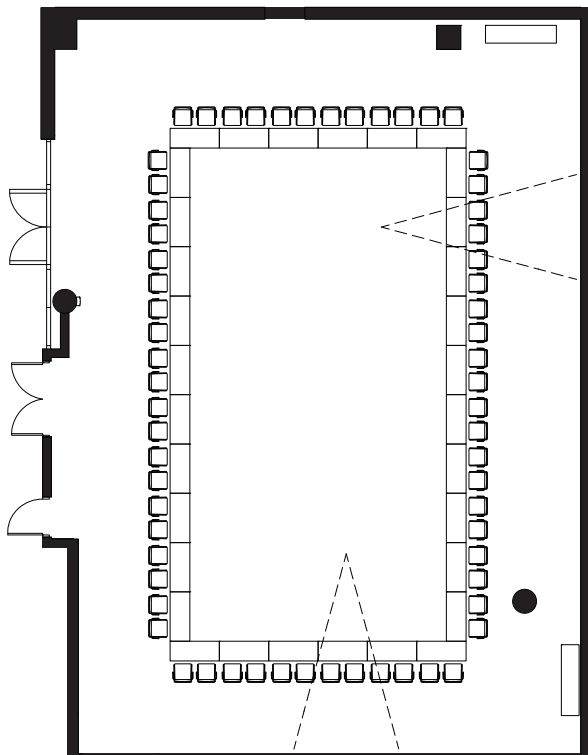
Room	Dimensions (ft.)	Size (sq.ft.)	Size (sq.m.)	Ht. (ft.)	Capacities Banquet	Theater	Conference	Reception	Classroom
Alfred Nobel Hall	44x61	2670	248	9'-0"	180 pers	180 pers	140 pers	180 pers	120 pers
A	44x24	1050	102	9'-0"	60	80	60	80	50 pers
B	44x37	1620	146	9'-0"	100	120	80	120	70 pers

Theater seating  
- See opposite page for  
alternative layouts



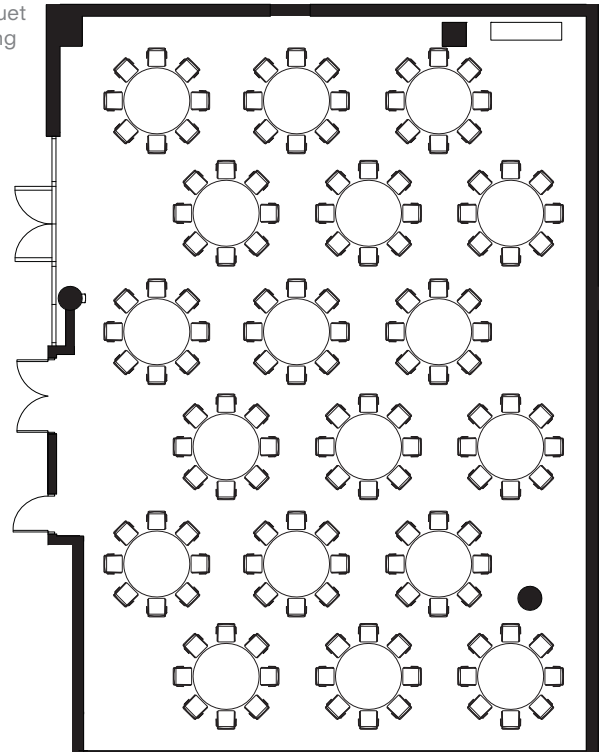


Classroom seating



Conference seating

Banquet seating



# HOUSE OF SWEDEN

House of Sweden, 2900 K Street NW, Washington DC 20007

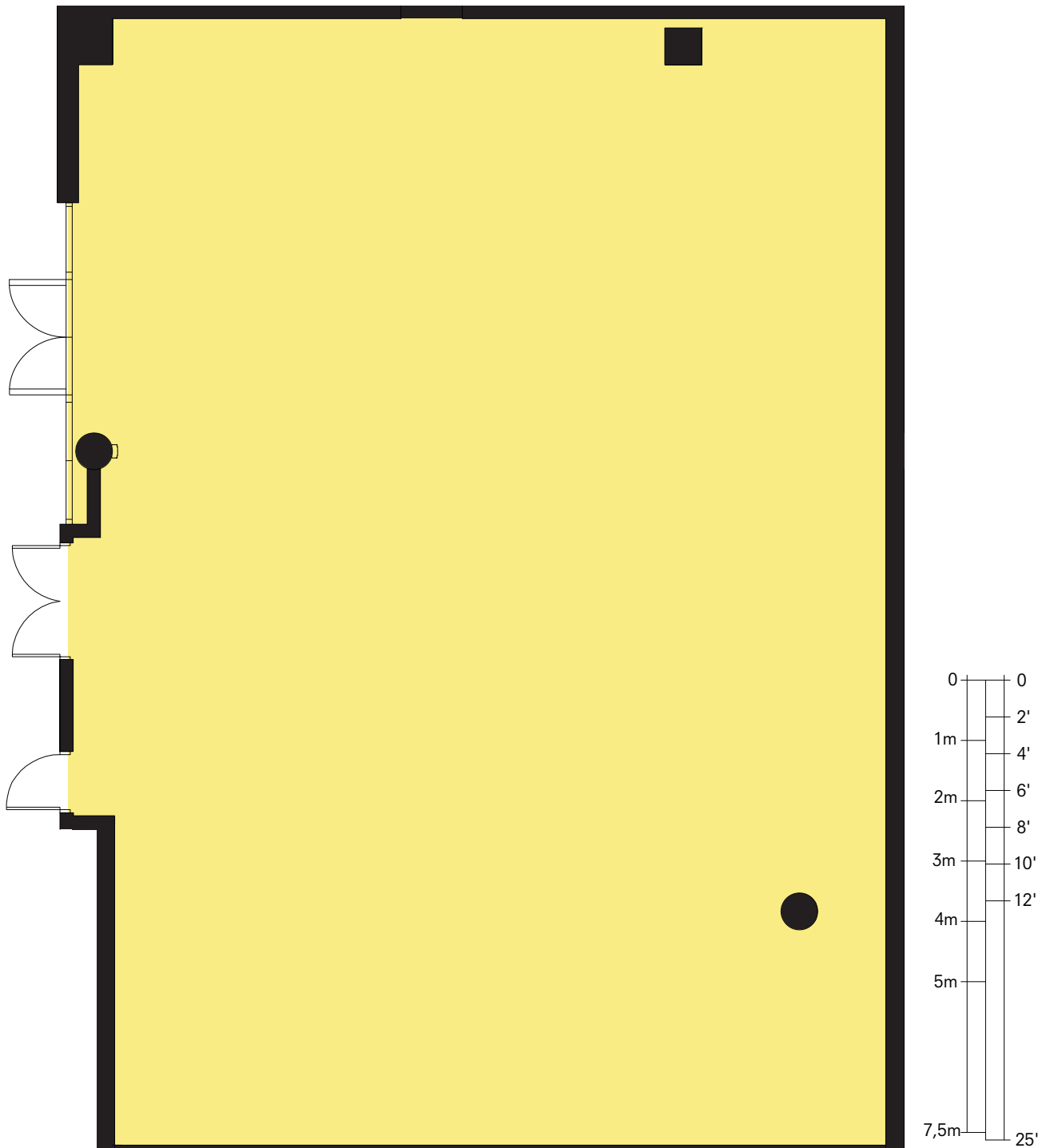
+1 202 536 1500

[info@houseofsweden.com](mailto:info@houseofsweden.com)

[www.houseofsweden.com](http://www.houseofsweden.com)

House of Sweden is a registered trademark owned and managed by the Swedish state through the National Property Board Sweden

# Alfred Nobel Hall



# HOUSE OF SWEDEN

House of Sweden, 2900 K Street NW, Washington DC 20007

+1 202 536 1500

info@houseofsweden.com

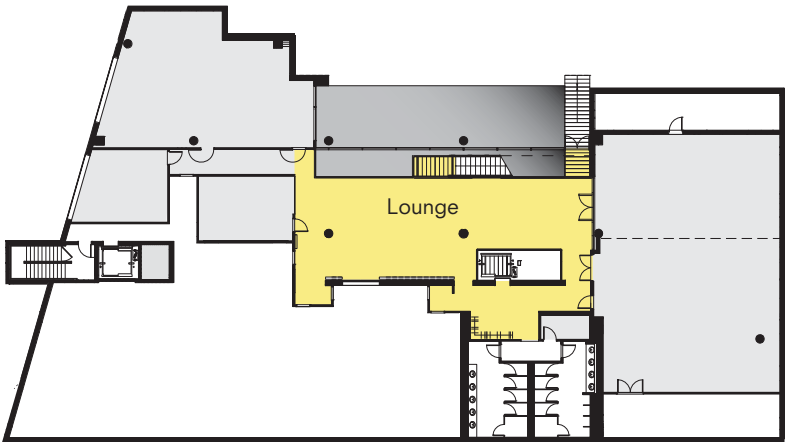
[www.houseofsweden.com](http://www.houseofsweden.com)

House of Sweden is a registered trademark owned and managed by the Swedish state through the National Property Board Sweden

 NATIONAL  
PROPERTY BOARD  
SWEDEN

# Event Center Lounge

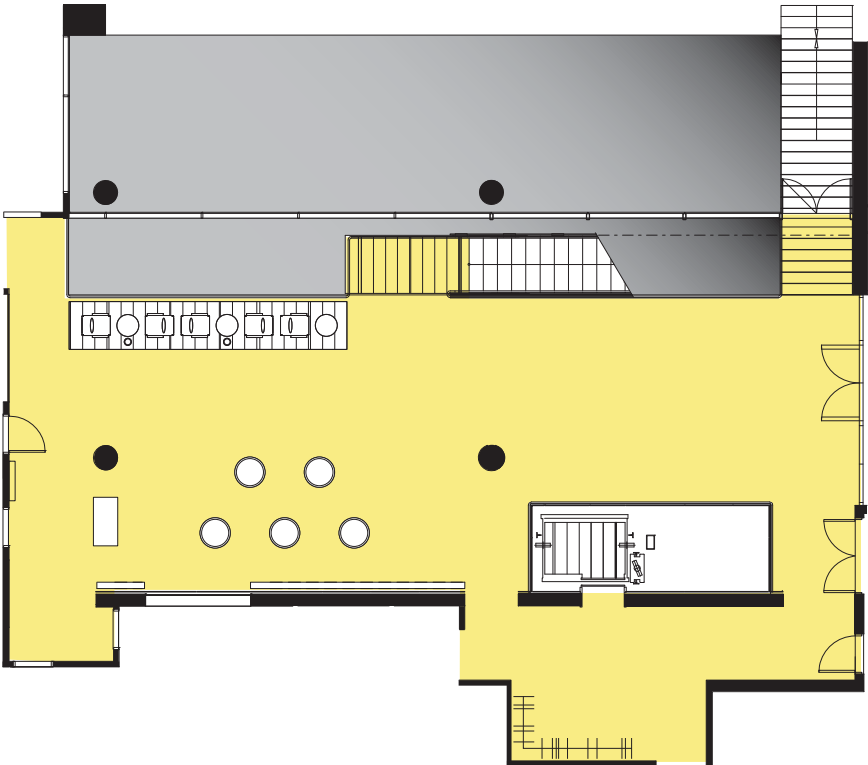
Situated on House of Sweden’s first floor, the Event Center Lounge is ideal for informal gatherings and evening cocktail parties. The space is highlighted by both indoor and outdoor reflective pools, separated by a floor to ceiling glass wall, and a great view of Rock Creek. Guests can walk out onto an outdoor stone walkway.



## Meeting Capacities

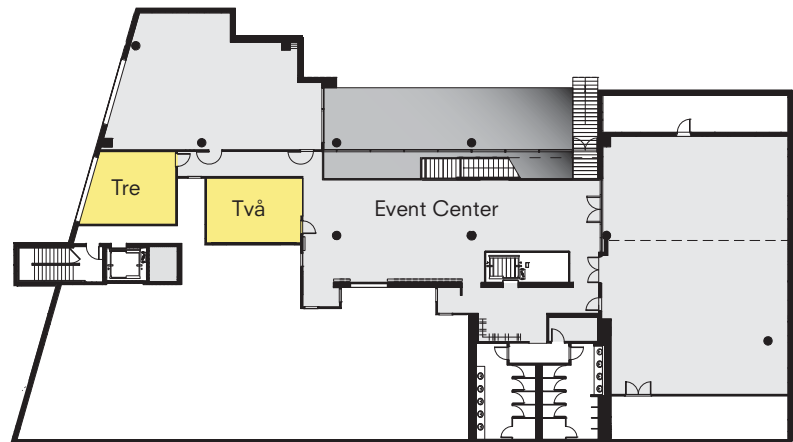
Room	Dimension (ft)	Size (sq.ft.)	Size (sq.m)	Capacity Banquet	Capacity Reception
Lounge	71x30	2150	200	60 pers	100 pers

## Lobby layout



# Två & Tre

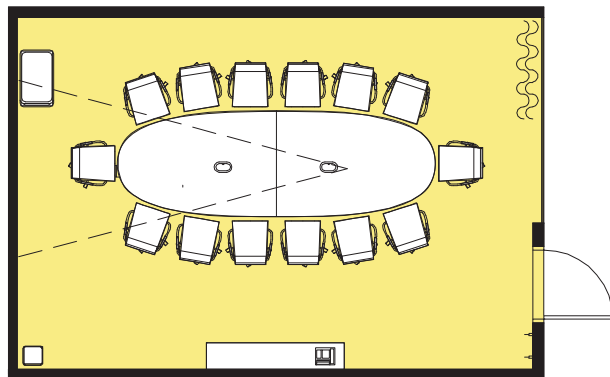
Två and Tre, two intimate conference rooms on House of Sweden's first floor, are ideal for smaller meetings or as part of a larger event as breakout rooms. Each room comes equipped with a projector and can comfortably accommodate up to 14 people.



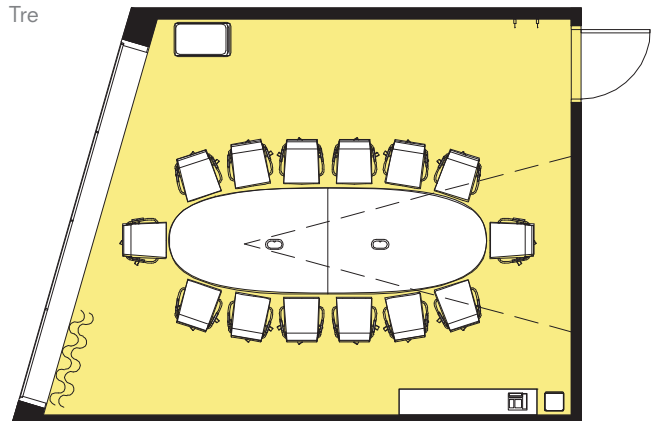
## Meeting capacities

Rooms	Dimensions (ft.)	Size (sq.ft.)	Size (sq.m.)	Ht. (ft.)	Capacities Conference
Två	22x15	340	32	8'-5	14 pers
Tre	21x17	350	33	9'-0	14 pers

Två



Tre



# HOUSE OF SWEDEN

House of Sweden, 2900 K Street NW, Washington DC 20007

+1 202 536 1500

[info@houseofsweden.com](mailto:info@houseofsweden.com)

[www.houseofsweden.com](http://www.houseofsweden.com)

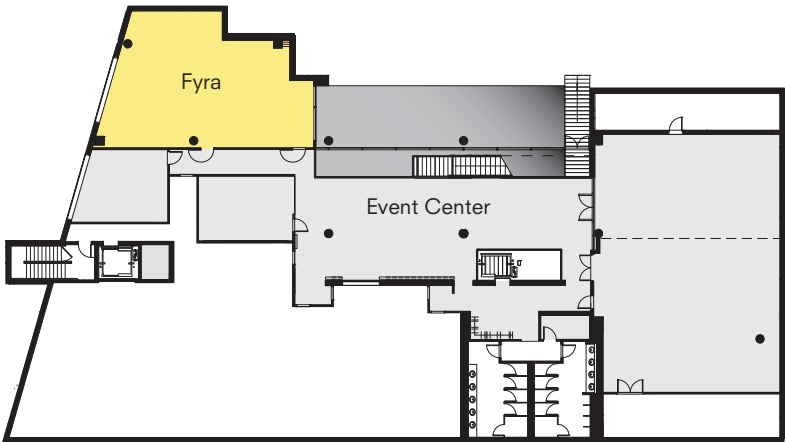
House of Sweden is a registered trademark owned and managed by the Swedish state through the National Property Board Sweden





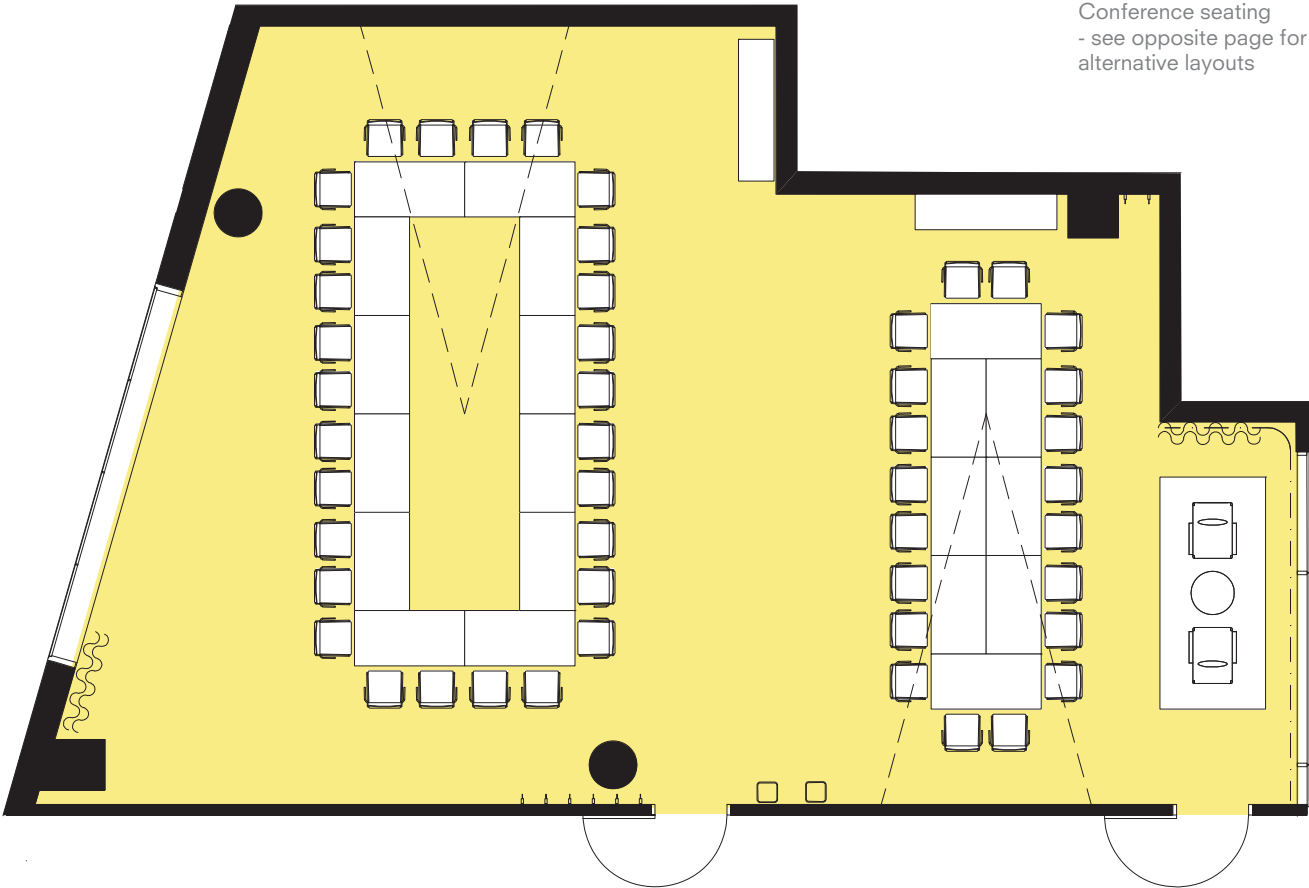
# Fyra

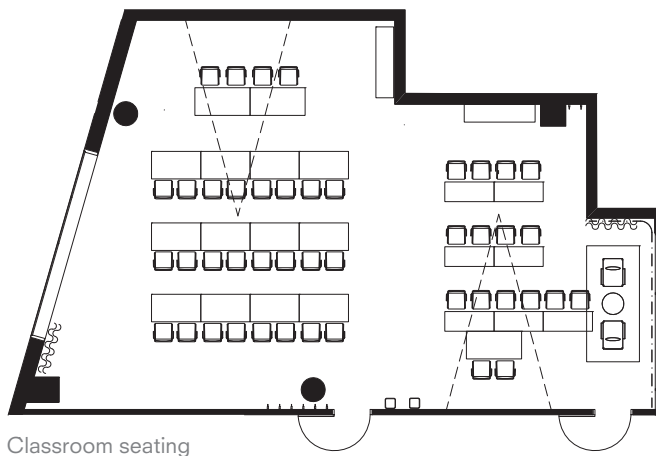
Fyra is a mid-sized conference or reception room. Fyra’s northern glass window overlooks House of Sweden’s beautiful landscaped garden, and the southern wall faces House of Sweden’s reflective pools. The room is equipped with modern AV equipment such as projectors and sound system for effective presentations.



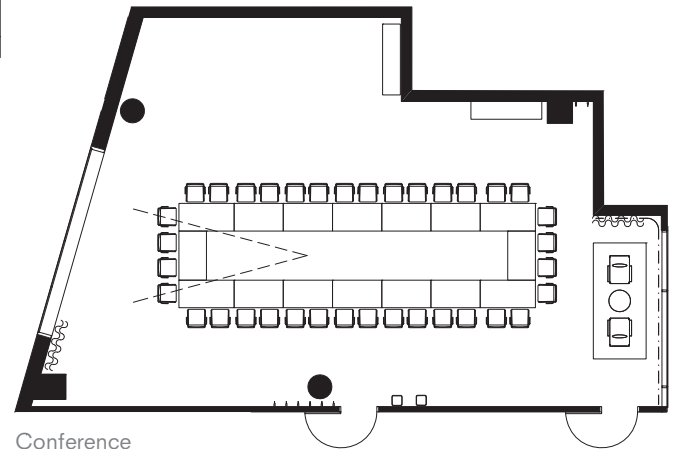
Meeting capacities

Rooms	Dimensions (ft.)	Size (sq. ft.)	Size (sq.m)	Ht. (ft.)	Capacities Banquet	Theater	Conference	Reception	Classroom
Fyra	48x33	1340	125	9'-0"	40 pers	74 pers	50 pers	80 pers	50 pers

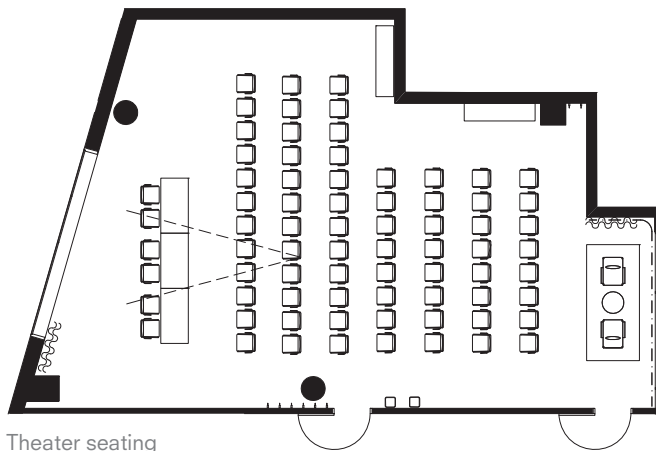




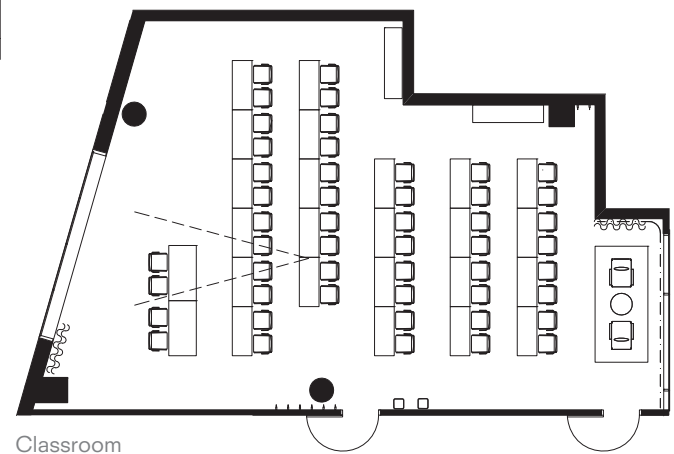
Classroom seating



Conference



Theater seating



Classroom

# HOUSE OF SWEDEN

House of Sweden, 2900 K Street NW, Washington DC 20007

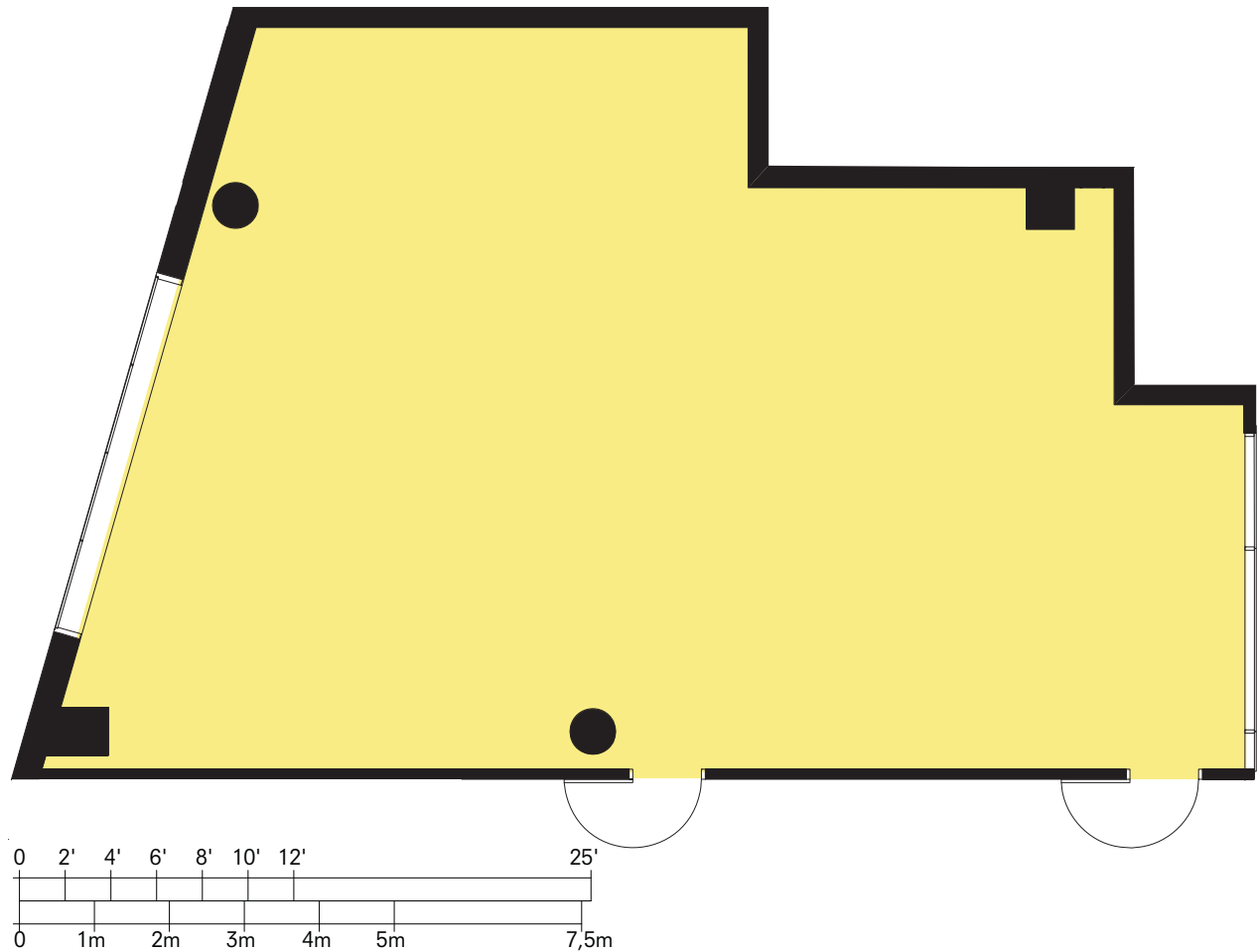
+1 202 536 1500

[info@houseofsweden.com](mailto:info@houseofsweden.com)

[www.houseofsweden.com](http://www.houseofsweden.com)

House of Sweden is a registered trademark owned and managed by the Swedish state through the National Property Board Sweden

# Fyra



# HOUSE OF SWEDEN

House of Sweden, 2900 K Street NW, Washington DC 20007

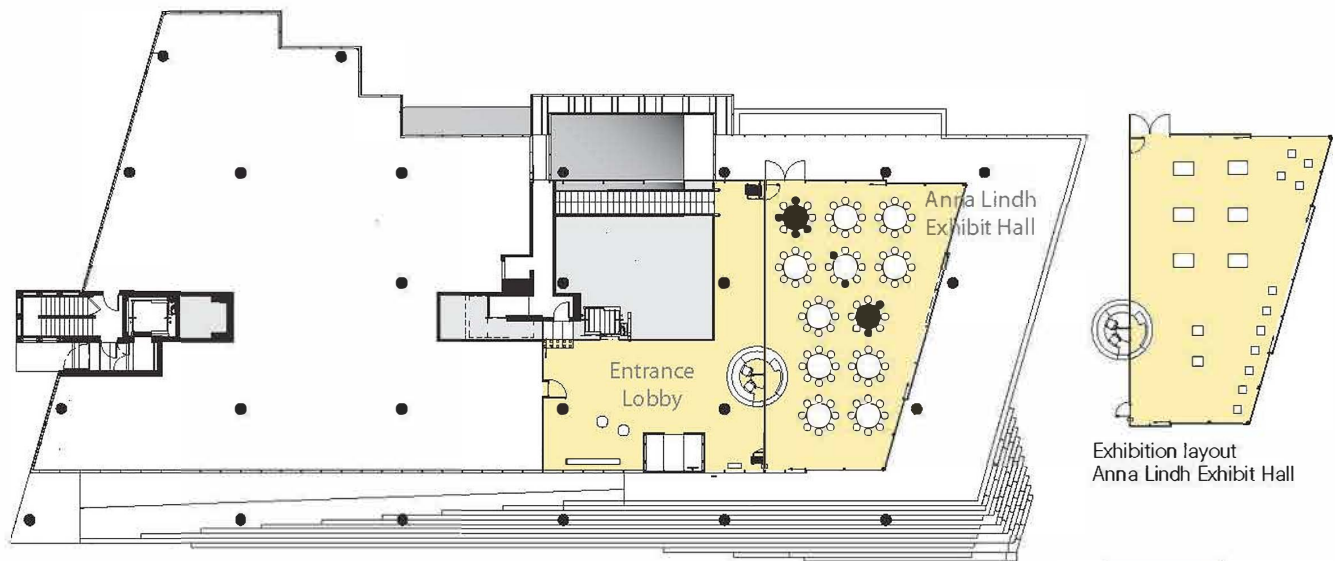
+1 202 536 1500

[info@houseofsweden.com](mailto:info@houseofsweden.com)

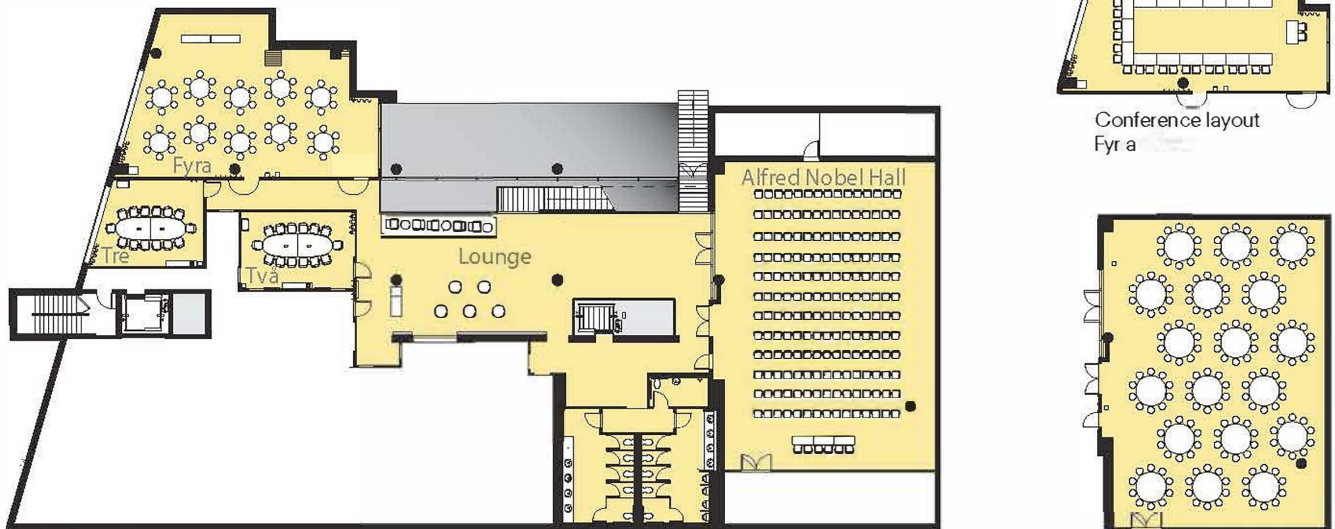
[www.houseofsweden.com](http://www.houseofsweden.com)

House of Sweden is a registered trademark owned and managed by the Swedish state through the National Property Board Sweden





Floor 1 Entrance Lobby and Anna Lindh Exhibit Hall



Floor 2 Event Center and Alfred Nobel Hall

### Meeting capacities

Conference hall	Dimension (ft.)	Size		Ht. (ft.)	Capacities				
		(sq. ft.)	(sq. m.)		Banquet seated	Reception	Theater	Conference	Classroom
Anna Lindh Exhibit Hall	32x57	1840	171	10'-0"	100 pers	100 pers	100 pers	-	-
Alfred Nobel Hall	44x61	2670	248	9'-0"	180 pers	180 pers	180 pers	140 pers	120 pers
Två	22x15	340	32	8'-5"	-	-	-	14 pers	-
Tre	21x17	350	33	9'-0"	-	-	-	14 pers	-
Fyra	48x33	1340	130	9'-0"	60 pers	80 pers	-	50 pers	50 pers
Lounge	65x20	1300	130	9'-0"	60 pers	100 pers	-	-	-

# HOUSE OF SWEDEN

House of Sweden, 2900 K Street NW, Washington DC 20007

+1 202 536 1500

info@houseofsweden.com

www.houseofsweden.com

House of Sweden is a registered trademark owned and managed by the Swedish state through the National Property Board Sweden

