



Loch Sport Community House Inc.
The Heart of Our Community

THE LINK

Dec 2023 -Jan 2024

Volume 26 Issue 6

Loch Sport Community House



Price-Gold coin donation
Thank you

Cup Weekend Twilight Market.

We kicked off with free showbags for children at the market, which were kindly donated by Wellington Shire Middle Of Everywhere.

In addition we would like to thank our other fabulous sponsors Gippsland Butchers Block, Sale Bakers Delight, Buntings Sale, Coles Sale and our very own BP Loch Sport.



This market had an amazing array of traders and food vans, and lots of shoppers getting in early for

And the winner is..!

Adski was the lucky winner of the awesome meat tray raffled by the Community House at the Loch Sport Marina Hotel on Melbourne Cup Eve! Many thanks to the Marina for allowing us to hold the raffle there, and also to Gippsland Butchers Block in Sale for their ongoing support.



CELEBRATING 30 YEARS LOCH SPORT PUBLIC HALL

PLEASE JOIN US IN CELEBRATING AT THE HALL

ON SATURDAY DEC 9 AT 2PM AT THE PUBLIC HALL.

THERE WILL HAVE DISPLAYS OF PHOTOS AND MEMORABILIA, A TIME CAPSULE (TO BE OPENED AT THE 50TH ANNIVERSARY), MUSIC PLAYING ON THE 'NEW' HALL PIANO. PLANTING OF A MEMORIAL TREE AND AFTERNOON TEA.

222-236 National Park Rd
PO Box 587
Loch Sport Vic 3851



Monday-Friday 9.30am-3pm

E Isch@netspace.net.au

P 5146 0145

W manager@lochsportcommunityhouse.com

Loch Sport Community House produces the Link with contributions from the community for the community. Please find below a list of our current distribution points:

BP Service Station

CFA Op Shop

C Shell Real Estate

FoodWorks

General Store/Post Office

Loch Sport Community Health Centre

Loch Sport Community House

Loch Sport Pharmacy

Lochy Coffee

Loch Sport Medical Centre

Uncle Tony's Fish & Chip Shop

Loch Sport Medical Centre

Online:

Click on The Link tab on our website
lochsportcommunityhouse.com

The closing date for your contribution to the next edition of The Link is **Jan 8 2023**.

All articles and new advertisements should be emailed to lochsportlink@gmail.com.

Please find below upcoming Link publication, article and advertising submission dates for 2023.

Please feel free to email

lochsportlink@gmail.com with any constructive feedback or suggestions.

Submission Deadline	Distribution Date
Jan 8 2024	First Mon Feb 2024
March 4 2024	First Mon April 2024
May 6 2024	First Mon June 2024

DISCLAIMER Loch Sport Community House accepts no responsibility for grammar or typing errors, the accuracy, error or omission of the information contained in articles and advertisements, and does not endorse or take responsibility for any views, opinions or material contributed for publication. Any photos provided for LINK Loch Sport Community House assumes consent has been sought by article provider prior to use.



**EMERGENCY
PHONE NUMBERS**

Ambulance, Fire, Police

000

SES

132500

Poisons Information

131 126

Wildlife Rescue

0400 079 337

Sale Hospital

5143 8600

Loch Sport Police Station

5146 0556

For a comprehensive listing please see our Community Directory on the centre page of the Link.



DEFIBRILLATOR Locations

CALL 000

Foodworks 48-52 Lake St

Outside

Golf Club Loch Sport Rd

Outside

Boat Club 14 Charlies St

Outside

RSL Charles St Reserve

Outside

Medical Centre

Inside

Public Hall National Park Rd

Inside

Tennis Club Charles St Reserve

Inside

Men's Shed Charlies St

Inside

Loch Sport Medical Centre

Inside

Loch Sport Fishing Assoc

Portable

(Cnr Cliff St/National Prk Rd)



Are you looking to get involved in your community, meet people and help out? Did you know that LSCH is registered with Centrelink for mutual obligation?

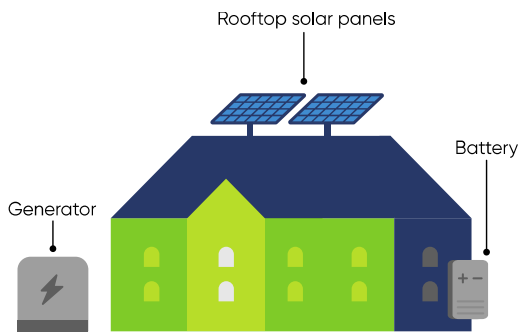
We are currently seeking team spirited, positive and enthusiastic volunteers to assist with supporting our Community House operations in the following areas:

- Administration
- Driving the bus for certain activities
- Events and fund raising planning/coordination
- Facilitating activities.

Do you have a skill, ability, art or information you'd like to share? We have some space available for additional activities, so let us know if you have a suitable activity you might like to facilitate at Loch Sport Community House. You can help as little or as much as you like!

Supporting the community to be power ready in an emergency.

An advanced backup energy system is being installed in the Loch Sport Public Hall. State funding was made available over the past year in response to the 2021 storm event, and the Loch Sport Public Hall was selected to receive the DEECA/Ausnet Energy Resilience Solutions Program which will see solar panels, battery back up, inverter and a generator installed. The purpose of the program is to provide energy resilience to the site to act as a community hub, providing access to back up power and other facilities (such as toilets, hot water etc) where power outages etc are caused by events or emergencies, as well as a place for residents to be together after difficult times.



Available services in an emergency

Location	Backup power *	Device charging	Internet access	A/C	Universal access	Showers	Toilets
Loch Sport Public Hall	✓	✓	✓	✓	✓	✗	✓

***Important Note:** the inclusion of a back-up energy supply does not mean that the facility is safe during or after an emergency. Please follow advice of emergency services

 We know that a connected community improves resilience during emergencies - and Loch Sport has done just that. Using an Emergency Recovery Victoria Community Led Recovery Support Grant, Loch Sport Community House and Public Hall has created this emergency information guide, with support from Wellington Shire Council.

The guide includes information on the Australian Fire Danger Rating System and a readiness checklist from CFA as well as local infor-

mation like the Bushfire Neighbourhood Safer Place and defibrillator locations.

These are all really important things to know before and during an emergency, so it's great to see the Loch Sport community using local knowledge to help inform each other.

Have you received your



Community House What's On

Our forum hosted by Disaster Psychologist Dr Rob Gordon hosted at the Hall was a great success with relevant and interesting topics to assist those impacted by disaster. Many thanks to Red Cross for providing this opportunity and those who attended.



LOCH SPORT COMMUNITY HOUSE SOCIAL CLUB

This year the Social Group is back in action with a variety of entertainment options at The Wedge in Sale and elsewhere locally. Keep an eye on our Facebook page for further details .

SINGING GROUP

Loch Sport Community House is pleased to announce that we have a weekly social, fun and friendly singing group meeting in the public hall on Mondays 3pm to 4.30pm. You don't need to be experienced, you just need to enjoy yourself! \$5 per session for members (membership \$10 per year). Please call the community house on 5146 0145 to book, or simply come along on the day!



Haircuts for the community

Check out our before and after shots of some of Franca's appointments at the community house in November. Franca kindly donates a portion of her fees back to the community house, so remember to book in for Tuesday Dec 12, appointments between 10am and 2pm. Trim \$30, re-style/blow wave up to \$50. Cuts only. Call 5146 0145 to book your spot!



Another mega dog food donation!

Many thanks to Animal Rescue Cooperation (ARC), donors and our volunteers for making this available to our community. With the support of ARC and our volunteers we were able to provide free bags of dog food to our community. Our volunteers drove their own vehicles to collect the bags and put in the very physical work of packing and unpacking this mountain of food! Thanks to Helen Fraser, Val & Bill McGrann, Ren Renahan, Michael Crowe, Jack Lieske and of course #ARC and suppliers for their dedication and generosity. arcsupport.org.au



FIGHTING ANIMAL HUNGER & SICKNESS
SOURCING FOOD, MEDICAL AND EMERGENCY SUPPORT
BACKING FRONTLINE WORK

**Stop kidding yourself.
If you drink, don't drive.**

Thinking about driving after a couple of drinks? Think again.
If you blow .05 or over, you could face serious penalties,
including fines, losing your licence, getting an interlock installed
in your car and having to blow zero for three years.



WEEKLY ACTIVITIES

Keep an eye out on our Facebook page, or call to see one off or short term activities and programs
All activities are \$5 for members, unless otherwise stated. Some activities may be numbers dependent or on break and
therefore may be subject to change
Please contact the community house office to confirm class details and book
5146 0145 or manager@lochsportcommunityhouse.com

Day	Time	Activity
MONDAY		
Office open 9.30am – 3.00pm	11.00am-12.00pm	TAI CHI FOR ARTHRITIS – Hall
	3.00pm-4.30pm	SINGING GROUP - Hall
	3.00pm-5.00pm	BOOK CLUB – <u>Arrawarra</u> (1 st Monday each month)
	7.30pm-9.30pm	EASY BALLROOM DANCING – Hall (excl. Monday after every second Sunday) *Call to confirm
TUESDAY		
Office Open 9.30am – 3.00pm	9.30am-12.00pm	CRAFT – Hall Meeting Room
	1.00pm-3.00pm	LINE DANCING - Hall
	3.00pm-5.00pm	FAMILY HISTORY – <u>Arrawarra</u>
WEDNESDAY		
Office open 9.30am – 3.00pm	10.00am-3.00pm	SWIM OR SHOP IN SALE via LSCH Community Bus – \$10 bus fee - bookings essential)
	10.30pm-2.00pm	LOCH SPORT HISTORY – Hall Meeting Room (subject to variation, call to confirm)
	1.00pm-4.00pm	TABLE TENNIS – Hall
	4.00pm-5.00pm	MEDITATION – <u>Arrawarra</u> (call to check dates)
THURSDAY		
Office open 9.30am – 3.00pm	10.30am-12.30pm	ART GROUP - <u>Arrawarra</u>
	1.00pm-3.00pm	CREATIVE WRITING – Hall Meeting Room
	1.00pm-4.00pm	LIBRARY – Hall
	3.00pm-5.00pm	CROCHET – Hall Meeting Room (6 week programs, *call to confirm dates & materials costs)
FRIDAY		
Office Open 9.30am – 3.00pm	9.30am	WALKING GROUP – Meet at <u>Lochy Coffee</u>
SATURDAY		
Office closed	9.30am-3pm	FAMILY HISTORY – Hall (3 rd Saturday of month)
SUNDAY		
Office closed		

Community Bus Hire

Did you know that Loch Sport Community House has a 12 seater bus that we hire out? We offer affordable bus hire for social and recreational activities, subject to availability and suitability.

Hire charges and general information.

- \$150 for up to 250kms
- Hire is to be pre-paid
- The bus is required to be returned on time, with a full tank of fuel (and receipt) and cleaned
- Hire agreement subject to further conditions

For further information or bookings

- Contact us on 5146 0145 or
- manager@lochsportcommunityhouse.com





Art Gallery

Located at the General Store

Boat Club

Open for drinks and nibbles overlooking the lake.
Live Lake Victoria webcam/weather station

Bowls Club

Casual bowls, darts night

Caravan Park

CFA

Weekly Sunday garage sale

Community Garden

Check out what's in bloom

Community House

Open for group activities, workshops and events

Explore

The many walking tracks

Foodworks Supermarket

Open 7 days

Fishing Association

Merchandise, live 90 Mile Beach webcam/
weather station and fishing events

Golf Club

Play a round or walk the course and spot the local
wildlife

Lake Foreshore Trail

Walk, ride, pram or wheelchair the lake foreshore
and enjoy:

- Viewing art by local artist Simon White
- Working out on outdoor gym equipment
- Using skate park or playground
- Visiting the jetty
- A picnic or cooking in the Lions BBQ shelter
- Reading the flood history on the rocks
- Spectacular sunsets and alpine views along
the entire trail

Lakes National Park

Car, walking and bike trails. Camping, BBQ and
picnic facilities. Local and unique flora and fauna
either on walks or on the water, including dol-
phins, kangaroos, koalas, echidnas, wallabies, a
vast range of birdlife and rare orchids, fungi and
native plants.

Pelican Point

Lake Reeve Nature Trail & Lookout Tower

Sperm Whale Head

Trapper Point

Point Wilson

Dolomite Picnic Area

Trouser Point

Cherry Tree Picnic Area

Emu Bight Campground

[parks.vic.gov.au/places-to-see/parks/the-lakes-
national-park](https://parks.vic.gov.au/places-to-see/parks/the-lakes-national-park)

Lake Reeve and 90 Mile Beach

Spectacular sunrises 90 Mile Beach

Fishing

Swimming and beach activities

90 Mile Beach Lookout

Whale Watching (May-October)

Superb sunsets over Lake Victoria

Marina Hotel Bar & Bistro

Views over Lake Victoria.

Meals, bar & events

Loch Sport Post Office/General Store

24/7 Fuel

Laundromat

Loch Sport BP Service Station & Kebabs

Open 7 Days

Lochy Coffee

Cafe

Pharmacy

Night Life

Keep a torch handy to spy our local wildlife out
and about

Look up and enjoy the Milky Way, constellations,
stars and planets with awe inspiring clarity

Rotamah Island & Little Rotamah

Various walking tracks with exceptional views and
bird watching opportunities and bridge from
Rotamah island over to Little Rotamah.

RSL

Open for meals and events

The lakes and other destinations

Lake Victoria and Lake Wellington

Hollands Landing and McLennan Strait

Metung, Paynesville and Lakes Entrance

Golden Beach, Seaspray

Sale via Port of Sale

Tennis Court Hire

Contact Hardware & Garden Centre

Uncle Tony's Fish & Chips

Water Activities

Fishing, Kayaking

Swimming, Boating

and various other water sports all accessible via
the boat ramp, lake or beach and foreshores.

Congratulations on your retirement Barb.

It was April 1992, just after Easter, when I first walked
through the doors of the Loch Sport Community
Health Centre to commence work. At the time, I nev-
er imagined that it would be the job of a lifetime.

After realising how beauti-
ful Loch Sport was, my
husband Andy and I decid-
ed to move to Loch Sport
with our young family and
we lived there for 17
years. My 3 boys attended
the Loch Sport Primary
school where they re-
ceived an excellent educa-
tion.



In the beginning the centre
was run by a committee
with the support of Gippsland Base Hospital which
was what Central Gippsland Health was called then.
Jenny Luke had commenced a few years before me
and I was filling in for Jenny Bugbird who was away on
maternity leave. Initially, there was an emphasis on
health promotion, education and screening. We also
provided first aid and emergency response as there
was no ambulance service in the town at that stage.
Jenny and I were called out numerous times after
hours to respond to a variety of health emergencies
in the early days.

The centre has evolved over time to meet the needs
of the community and now provides a range of ser-
vices including health education and individual sup-
port, district nursing, Hospital in the home, palliative
care, first aid and some pathology services, Head to
Health counsel-
ling is co-
located at the
centre. I also
provided the
Maternal and
Child health
service to the
youngest mem-
bers of our
community and
their families.

I worked my
last day on the
10th November
2023 after 30+



years. The position I filled had lots of challenges
and you never knew what was going to happen
on the day but that kept us on our toes! The job
was always changing, always interesting and ful-
filling.

There are so many people in the community I
need to thank, firstly all my colleagues over the
years, especially Jenny, Fiona and Ann, without
their friendship and support I would never have
lasted so long. Karen and Heather who have kept
the centre spotless and the Thursday Ladies and
Gentleman who hold a special place in my heart.
Also, to those of you who have shared your sto-
ries with me, sometimes we have laughed to-
gether and sometimes we have cried together, it
has been the most enormous privilege to have
been a part of your lives and it is an experience I
have never taken for granted and will never for-
get.

Lastly a big thank you to all those who attended
the afternoon tea on Friday, I was literally was
lost for words. I will be back to Loch Sport on a
regular basis so I hope to catch up with you when
I'm in town.

There is an old Chinese saying I'm going to leave
you with -
"Keep a green bough in your heart and a singing
bird will come",

Take Care

Barb McCubbin



Make your own Australian native Christmas wreath

WHAT YOU WILL NEED:

- * A decent sized table or space to work
- * A wreath frame (pick up from any hardware or craft store), make a wire one or see if you or your neighbours have something you can upcycle.
- * Florist tape/wire (if not, electrical tape or twine will do)
- * A good selection of native flora, pick it from around your suburb
- * Optional -Hot glue gun (for grown ups only), ribbons, gold/silver spray paint, Christmas ornaments



HOW-TO:

1. First, we are going to take out our sticks and dried leaves/flowers and look for some interesting shapes. Cut them to size and look at planning your design on your hoop before we start sticking. Think about adding height and dimension to this layer or your wreath.
2. Separate shoots of flowers, nuts and leaves, leaving a reasonable-sized stem on each piece. Use wattles and bottlebrush flowers for colour, or perhaps small bunches of gumnuts, banksia leaves and other sturdy native foliage. You can attach anything you wish so we encourage you to get creative! Forage around your neighbourhood to make a wreath that reflects your area, or if you're looking for something specific, ask your friends or neighbours if they could contribute proteas, waratahs or kangaroo paws.



3. Make the leaves your base. Attach the flowers and nuts secondarily, working in a clockwise direction around the wreath. For both layers, thread the stems through the wire and tape to secure in place. For heavier foliage, use the wire and twist into place. Position leaves and blooms randomly for a relaxed look, same with hanging bunches and asymmetrical placement.
4. Use ribbon or wire to affix to the door or wall. You may need to look into removable hooks if you don't have a brass knocker or central piece to attach the wreath.



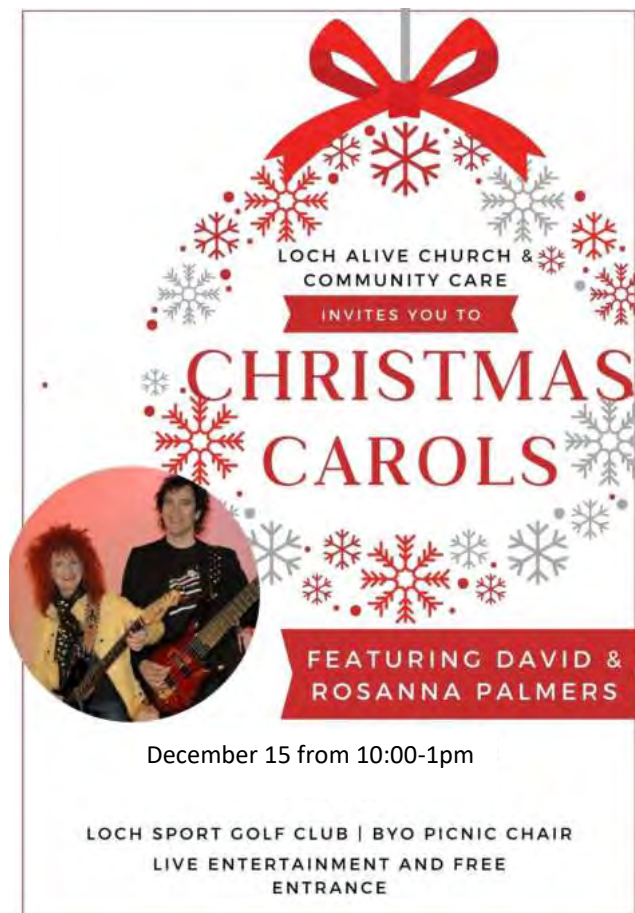
Jump on Google or Youtube to read or view other options.



What's On



**PLEASE JOIN US IN CELEBRATING
AT THE HALL
ON SATURDAY DEC 9 AT 2PM AT THE PUBLIC
HALL.
THERE WILL HAVE DISPLAYS OF PHOTOS AND
MEMORABILIA, A TIME CAPSULE (TO BE
OPENED AT THE 50TH ANNIVERSARY), MUSIC
PLAYING ON THE 'NEW' HALL PIANO.
PLANTING OF A MEMORIAL TREE AND
AFTERNOON TEA.**



Market
9am-12.30pm
Saturday 18th Nov
2nd Dec
16th Dec

Golden Beach Community Garden
Golden/Paradise Beach Ratepayers & Residents Assn

Stallholders contact
Veronica:
0428 788 226
veronicapetelin@me.com



art, craft + beautiful objects

STALLS REQUIRED FOR A MARKET DAY

Calling all stall holders, food trucks, entertainment personal and any one finishing off their spring cleaning

THE AUSTRALIA DAY SURF FISHING CARNIVAL INVITES YOU TO COME AND ENJOY A FANTASTIC FAMILY MORNING OUT

27TH JANUARY, 2024
AT THE COMMUNITY OVAL IN GOLDEN BEACH

Stall holders arriving from 7am
Food trucks and vans will be required to pay a \$50 refundable* booking fee
All other stall holders are **FREE**

To book or for any further questions contact Shannon on
0498478898
shannonmills1998@live.com.au

*ONLY REFUNDABLE IF GIVEN 48 HOURS NOTICE OF NON APPEARANCE OR HAVE EXTENUATING CIRCUMSTANCES

Protect yourself in **five ways** from skin cancer



Loch Alive Christian Centre ACC
Christmas lunch on December 17
Service starts 10am Lunch is from 11:30-1pm
Loch Sport Community Care
Last day for 2023 trading Thurs 21 11am-3pm

Loch Sport New Year Eve Fireworks



From 10.00 - 10.30pm Start, Lake Street Park
Proudly Sponsored by Local Businesses & Wellington Shire Council
Loch Sport Business & Tourism Association
This is an Alcohol Free Even

WELLINGTON SHIRE COUNCIL
The Heart of Gippsland

Viva The Arts! Golden Beach

What clearer sign of cultural growth in a small community is there than a group of people dedicated to the construction of a long term commitment to a purpose built art gallery. Providing a place of worthy respect for the professional practitioners of art is essential to the artist and community's well being and in also providing a positive experience of art for the amateur.

Art By The Sea has been a living concept for some years now, comprised of a few semi-permanent displays of local art interspersed with loosely curated group exhibitions, in the Golden Beach Community Hall. However, with the growth of local cultural interest, it became clear that a building that could present more professionally without distraction was integral to the real development of The Arts in the broader community.

The new Golden Beach Art Gallery, situated between the hall and popular nursery just off the main road is an initiative of

Golden/Paradise Beach Ratepayers and Residents Association. It is funded privately along with a few smaller grants be-

ing gleaned along the way to supply water, toilet amenities and all the extras that a facility like this will need in the future. There's still work to do before the gallery is open and to date as it has not been subsidised by our local council, the search for financial support for this project is ongoing.

We've been holding brilliantly successful markets in the meantime under the banksias of the Golden Beach Community Garden when weather and time permit. It really is a glorious setting.



These markets raise a little money but also raise awareness of art and community. I'm continually pleasantly surprised at the number of creative souls we have around here, from Loch Sport to Seaspray and further, as well as everyone's enthusiastic support. I have a vision of an Arts Precinct on that site, where the gallery hums along with regular shows by local and visiting artists, where a market full of surprises springs up every Saturday morning alongside the nursery, where people mill around, hang around, talk about what they're seeing, maybe sit with coffee and snacks from the general store or the occasional coffee van.

Big thankyou for enjoying it with us.

Viva The Arts! More celebration of life!

Veronica Petelin



You're invited to join us at Gippsland Art Gallery to hear from artist John Wolseley on his survey exhibition 'John Wolseley: The Quiet Conservationist'. On exhibition this summer, 2 December to 18 February 2024.

This exhibition presents works by celebrated English-born Australian artist John Wolseley, focussing on those created in the four years that he was living and working in the region (1976-1979), following his emigration to Australia in 1976 to join the teaching staff of the Gippsland Institute of Advanced Education (GIAE) in Churchill.

An unconventional artist in many respects, Wolseley shuns traditional approaches to depicting landscape. He engages instead in an organic visual dialogue with a location, which takes into account its history, geology, topography, flora and fauna. The viewer is treated to a sprawling narrative of diary notes, sketches, watercolour studies and tracings—often combined into a single artwork.

Artist Talk with
John Wolseley
Sale Gallery

70 Foster St,
Sale VIC 3850, Australia

E: gallerystenquiries@wellington.vic.gov.au

P: 5142 3500

W: gippslandartgallery.com



Leongatha Rotary Club Leongatha Art and Photography Show

The 2024 Leongatha Art & Photography Show will be held over three weeks from Jan 13 – Feb 3 at the Leongatha Memorial Hall. The Memorial Hall is located at the corner of McCartin Street and Michael Place, Leongatha, Victoria.

For more than 47 years, the Rotary Club of Leongatha Art & Photography Show has become one of the major events and art shows in Gippsland. Over 500 high quality entries come from all over the region, Victoria and interstate to compete in 15 award categories. This major art and photography show attracts many visitors, who come to view the works, all of which are available for purchase.

The show is open to the public from 10:00am to 4:00pm Monday to Sunday. Entry to the exhibition is \$5.00 per person. Young people and exhibiting artists are able to enter free of charge.

The Official Opening and announcement of the 2024 awards and prizes will take place on Friday Jan 12 at 7:45pm, with a gathering of artists, guests, Rotarians and our judge for 2024 from 7:15pm.

The Art Show Team

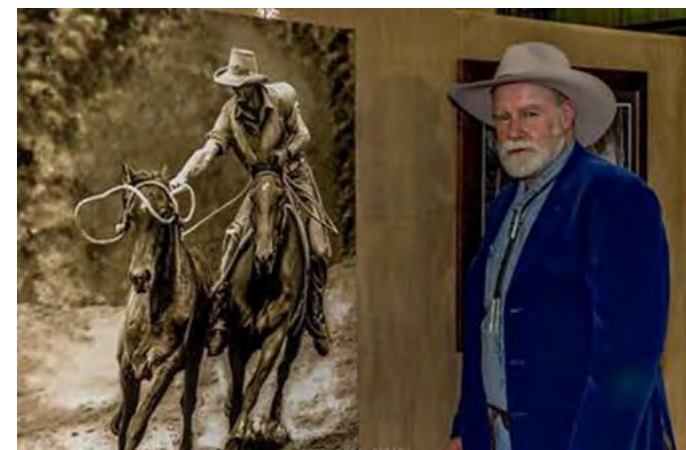
Email: rotaryleongatha.artshow@gmail.com

Send a message via the 'Contact Form' opposite

Leongatha Rotary Club

Email: rotaryleongatha@gmail.com

Web: www.leongatharotary.org.au



The gallery located at the Loch Sport General Store is open most days depending on availability of our volunteers. The work on display and for sale covers a variety of arts and crafts created by our local artists. If you drop in and chat to our friendly team or contact us by email:

pogallerylochsport@gmail.com

Donna Marcuis

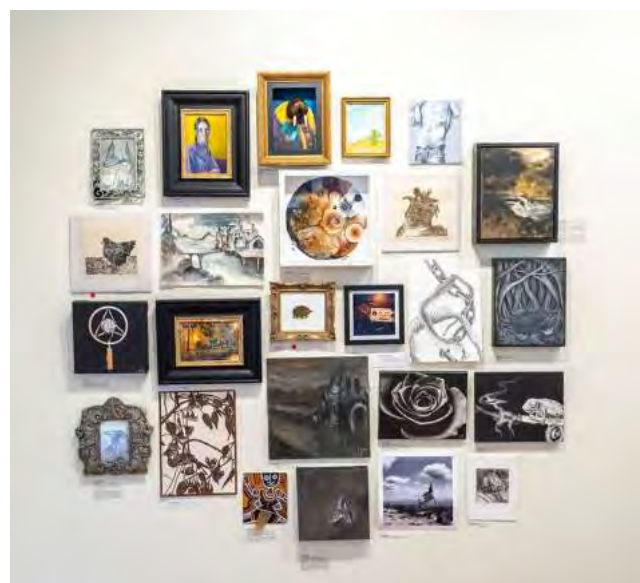


EGAG WRAP 2023 small artwork prize East Gippsland Art Gallery. Dec 1– Jan 20 2024 Special opening event 5.30pm Friday Dec 1, all come free entry.

EGAG WRAP 2023 is a small artwork exhibition with an \$8000 first prize. This competition is open to every living artist anywhere with any subject or medium. Artwork can be sold during the exhibition and taken at time of purchase. East Gippsland Art Gallery takes no commission of artwork sales during EGAG WRAP 2023. The 2023 Judge is Simon Gregg, Director of Gippsland Art Gallery Sale.

\$8,000 EGAG WRAP 2023 Major Prize

\$500 - Carina Turner Environment Award for artists responding to environmental or ecological issues, or exploring ideas and concepts related to nature.



On behalf of the Loch Sport Fire Brigade we wish all residents and visitors a

very merry Christmas and a safe and happy New Year.

The brigade has been busy with the large scale

Beacon Swamp incident, ten primary turn outs and one motor vehicle accident, in addition to supporting brigades at Golden Beach, Newry and Heyfield areas in blacking out operations. The largest the Beacon Swamp incident burnt from Lake Victoria to the main road, jumping in several locations and from Seacombe to the golf course which is some 3420.00Ha in size. CFA assistance was supplied from across the state in the form of several strike teams including some crews from the other side of Melbourne, as well crews from Forest Fire Management Vic, DEECA, Parks Vic, Fire Rescue Vic, CFA District 10 (and other districts), Vic Police, Ambulance Vic (both local and Sale Units), Loch Sport SES and Aust Net Services. Many thanks to all the local clubs and business from within the town for all their support at all hours of the day and night.

To everyone involved (and there were many!)

A VERY BIG THANK YOU !!

A very special thanks to all the students and teachers at the primary school for their kind words and thank you cards, which are on display and have pride of place in the fire station here at Loch Sport.

FIRE DANGER PERIOD has started again, **two months earlier than normal. No burning off at all.** Please take your green waste to the tip. Do not burn it as this may result in a brigade turnout and a good chance of a visit from a member of Vic Police.

Emergency services of Loch Sport held an open day / information day here in town on the Melbourne Cup weekend. Loch Sport CFA provided information on fire safety, bush fire information and Captain Koala made a guest appearance. It's been awhile since he has been in town!

Reminders-revisit your household Fire Safety Plans and update and inform your family if

needed.

In the event of an emergency for either Fire, Ambulance or Police call 000, TripleZero will take all details and page the relevant service(s) required straight away.

Do not ring brigade members or the local station, we cannot respond until we have a formal job that activates our pagers. All of our operational members carry a pager 24/7 so that we can respond if required.

Have you thought of joining the brigade, either in an operational or non- operational role? Feel free to drop by and chat to one of our current members or inspect our equipment and vehicles we are open every Sunday morning between 8.30 am -12.30 pm. Remember the CFA opp shop is open every Sunday morning during time.

Pete Connell

Brigade Captain

Loch Sport Fire Brigade

P 5146 0997

F CFA Loch Sport

E lochsportcfa@gmail.com



Please Help Us Locate Available Water Resources For Fire Fighting In:

LOCH SPORT

Do you have at your property an existing:

10k litre FIRE WATER TANK WITH A STANDARD CFA FITTING FOR CONNECTION?

IF YES:

Could you please advise its location by completing our information form.

Please Scan the QR Code

Then complete the Form.



Community Service Survey By: NEWSDESK Letts Beach News Media (c)



Make a lifesaving impact in Loch Sport

Introducing Carrier Bondoux our new Team Leader for Loch Sport Ambulance Service. Carrie has been an Ambulance Community Officer (ACO) for more

than three years and along with her past professional experience is looking forward to making a great contribution to the health and support of the Loch Sport community. We are so proud of her. Please join the team and auxiliary in supporting her in her new role.



The Emergency services of Loch Sport came together to engage the community over the Melbourne Cup weekend. It was a wonderful opportunity to see all of the members of their respective organisations come together.



Time goes so fast these days and we all know the old saying "if you want something done ask a busy person". Well, the time has come for us as the Ambulance Auxiliary to ask for some much needed help from

the community.

As you may or may not know we have one Ambulance in town which is manned by ACO'S (Volunteer Ambulance Community Officers). Two must have rostered on at anytime (as per Ambulance Victoria regulations), for the ambulance to leave the station. With the situation of only having one ACO or maybe none at all as it is happening sometimes of late, we are then left waiting for an ambulance to come from Sale or Rosedale. We have experienced this and it is a long wait. Time is critical when calling an ambulance.

We need more people who are willing to be trained as ACO'S and on the roster even if it is only one or two shifts a week or a weekend when you are down for holidays or nights or days. Every little bit helps.

Our ambulance is very precious to us as the community worked relentlessly to establish the Loch Sport service many years ago. Older residents and holiday makers remember buying raffle tickets in the late 1990's which raised thousands of dollars to ensure the community of Loch Sport had an ambulance to support our community.

If you would like to find out more about becoming an ACO please scan tour QR code.



Our auxiliary is always looking for members who can contribute in other ways.

Any enquiries can be made by scanning the code or sending an email to helen.boon22@outlook.com



Neighbourhood Watch
Let's watch out for each other

Loch Sport Neighbourhood Watch are encouraging all homeowners to display their street number in a clear and visual manner outside their homes. This assists our emergency services to locate your home quickly (particularly at night) if needed. It has been difficult at times for the emergency services to identify which house is needing assistance and this can be a matter of life and death.

Robin Keitley
Neighbourhood Watch
Co-ordinator



The Loch Sport SES has been busy over the last couple of months. We have had several call-outs for trees falling over roads plus we provided support for the community during the bushfires, all of which has kept us busy. Last Saturday in conjunction

with the CFA, Ambulance Vic, Sale & Bairnsdale SES we held our 2023 Open Day, which included a sausage sizzle, patties pies and entertainment from Paddy Platypus, Captain Koala and Stretch. There was a reasonable attendance and thanks to those who came along. It would have been nice to see more locals, although we still had four potential new members. We are still looking for new members to fill our numerous positions. We are a volunteer organisation and only survive when people give up time to help. If interested drop in to our unit at 105 National Park Road on a Wednesday at around 5 pm. Enjoy your Christmas break and we will see you at this years fire works.



Regards

Chris Wood Unit Controller
F Loch Sport SES
A 105 National Park Rd Loch Sport
SES Victoria
W ses.vic.gov.au
facebook.com/vicses
P 13 25 00



Our Calcutta event was a huge success. Thank you to all who attended. We look forward to doing the event again next year. **The Lions Children's Christmas party** for local children aged from birth to grade 6

will be held on **Sunday Dec 10** starting at 11am, with Santa arriving at 12.30pm.



The annual **Bush market** will be held on Saturday Jan 6 . Thank you to stallholders who have already returned their applications. We hope to have a great day once again. For enquiries please call Wendy on 0402 503 190.

The **School Water Safety Day** is being held at the Loch Sport Boat Club on Friday Dec 1. Lions will be sponsoring the lunch once again this year and we look forward to another great day.

Australia Day celebrations are being planned. Loch Sport Citizen of the Year paperwork has been distributed to clubs and community groups. If anyone would like a nomination form, please email: lochsportlions@gmail.com The closing date is Friday Jan 5.

Our meat raffle continues each Saturday at the

Support your community with a
Lions Christmas Cake.



Sometimes, it's more than just the thought that counts.

Always.
lions australia
75 years and counting

Marina Hotel. Monies raised goes to various projects and charities.

Lions Christmas Cakes are now on sale. They are available at the General Store/Post Office and CFA Op Shop. You may also order by phoning Cheryl 0409 967 900 or Judy 0418 371 829 and we will deliver. Price for 1.5kg cake is \$20 and \$16 for the 1kg.

We are always looking for new members. If you have some spare time and would like to join our club, you would be most welcome. There is a lot of satisfaction in helping others in need, and also to be part of assisting those who have experienced disasters here and around the world. We meet on the 2nd and 4th Tuesday of each month at 4pm in the Public Hall. For enquiries, call our President Ken on 0418 557 644.

Wendy Dodd
Secretary,
Ph. 0402 503 190

Loch Sport Foreshore Committee



While it has been some time since we have updated the community about the progress of the grant allocated to partially fund erosion control

works in Lake Victoria which is under the jurisdiction of DECCA (previously DELWP), much has been happening.

DEECA employed consultants BTM to investigate the problem of erosion in Loch Sport and they developed some options based on BTM's 2022 *Loch Sport Foreshore Coastal Processes and Options Assessment*. As a result of this report, three options were recently put to the committee for immediate erosion holding in the Seagull Drive boat ramp area.

The Committee, in conjunction with Business and Tourism felt that there needed for more investigation. We are continuing to seek clarification in relation to this work. We are advocating for the continual installation of groynes to the east from where the last geotextile groynes was installed. The success of

these groynes, which were installed in 2008 along Lake Victoria foreshore at Seagull Drive and the many other groynes along the foreshore, and can clearly be seen from this aerial photo taken in October 2023 by David Donnelly and shared on Facebook.

We believe that groynes are the best long term solution. They have been proven to trap the drifting sand. The photo shows the effectiveness of the short groyne constructed about two years ago where erosion had destroyed part of the walking track. Not only is the repaired track now secure, a useful beach has developed.

Also, based on the 2022 BTM's report, three areas of the current walking track east of the Seagull Drive boat ramp have been marked as needing realignment due to erosion. The committee has applied for a grant to repair these areas and should hear the outcome soon.

Spring is also the time when we consider the fire readiness of our properties. If residents have concerns about the property about foreshore land controlled by council or DEECA, it is most important that they contact the relevant authority before undertaking any clearing on public or Crown land. If you need clarification on the relevant authority which controls the land, you can access maps from the internet or contact us. No clearing should be undertaken on any Foreshore land without permission.

On behalf of the committee,
Marg Bloom Treasurer
E lsforeshore@gmail.com
A PO Box 126, Loch Sport 3851

F Loch Sport
Foreshore
Reserve



World Kangaroo Day 2023 was held at the Loch Sport golf club on Oct 21. This was the first time I'd organised such an event and am very pleased with its success.

Thank you to the golf club for allowing me to host the event in this perfect location, to the helpers on the day for running the bar, cooking the BBQ and helping to set up and pack up.

Also a huge thank you for the donations for the raffles.

- Our Haven Wildlife Shelter for the donation of a trailer load of firewood, won by Leanne Martin.
- Gippsland Butchers Block, 2x vouchers.
- Loch Sport golf club, 18 holes of golf and cart.
- Loch Sport Marina Hotel, voucher.
- Loch Sport Hardware and Garden Centre, Lantern.
- Rachel Hunter, framed photo.
- Loch Sport Kebabs, 2x HSP meals.
- Loch Sport Men's Shed, Wooden wheel barrow.
- Butterfly Made, knitted goodies.

Congratulations to all the winners

On the day we introduced our amazing local carers and rescuers and the got to talk about what they do for our wildlife.

We also discussed what to do when a roo gets hit by a car.

What to have in a "car rescue pack", how to check for joey's when the mother has died. The need to have phone numbers saved in your phone, so there is less stress in an emergency.

We then had the "walk and talk" watching our local roos being roos, how they live and their family groups.



What they eat. With a big emphasis on **not** feeding them BREAD.

We then answered questions

Back in the clubrooms there were items for sale, with all proceeds going to the Haven.

Hand drawn and made cards, Paintings, Our Haven caps, cakes, slices, chocolates and bags of Roo Poo for the garden were available.

Together we raised \$756 for the Haven, which was greatly appreciated.

Kangaroos are in decline, being pushed out of their natural habitat into smaller areas and having to deal with humans, cars and roads, fences, dogs and hunters. Please consider kangaroos when building fences and blocking their travel paths. Wire fencing can be a death trap.

Finally on behalf of Theresa and Scruff from Our Haven Wildlife Shelter and myself, a huge thank you to all the caring people that turned up, willing to learn about how to look after our amazing kangaroos and how to coexist and make theirs and our lives better. We will be planning a bigger and better World Kangaroos Day on 24th October 2024 and would love to see lots of familiar faces and lots of new ones too.

Michelle Robinson



Loch Sport BOAT CLUB

It was a stormy start to a Celebratory Day, Loch Sport Boat Club's Opening Day. The sun was shining brightly in the hearts of Loch Sport Boat Club members as they prepared for a long-awaited season to start. The anticipation was palpable as the club geared up for its annual opening day, a cherished tradition to kick off the sailing season. However, Mother Nature had other plans for this special occasion, as unrelenting winds and choppy waters disrupted the grand sail past that was originally planned.

Though the sail past may have been postponed, the opening day was not a washout. Club Commodore, Michael Riky addressed the gathered members, acknowledging the weather's interference and expressing appreciation for the resilient spirit of the Loch Sport Boat Club community. The day's celebrations served as a reminder of the true essence of this close-knit group. It was a day to cherish the friendships, shared experiences, and unwavering love for sailing and boating that unite its members.

Catamaran Challenge 4 November 2023

A big shoutout to all the participants, sailors, and supporters who joined us for this incredible event. You truly made it a memorable day out on the water.

The winds provided an exhilarating challenge for our sailors, and it was wonderful to see everyone having a great time. Laughter, camaraderie, and a little friendly competition - that's what it's all about! Results:

1st - Gary Maskiell in Mosquito with Spinnaker

2nd - Pete Kiely in Mosquito with Spinnaker

3rd - Tim Shepperd in Mosquito

9 entries - 8 finished winds 15 -20 knots south east to southerly

Thanks to new sponsor Carolyn from the Loch Sport General Store

Live music from Darren , Scooter and Andrew



On December 1 the first water safety day for 3 primary schools.

Do you own a boat, kayak or just love the water and want to be part of the Loch Sport Boat Club community? New season and social memberships are welcome. Become a member today, whatever floats your boat.

If you want to know what is happening at the Loch Sport Boat Club, don't forget to check out our website for more information.

Wishing fair winds and smooth waters to all,

Des Crossley

Committee Member and Communications.

Loch Sport Boat Club

E lsbc@loch-sport.net

W loch-sport.net

F Loch Sport Boat Club

I instagram.com/lochiethpelican

P 5146 0004

A Charlies St Loch Sport

Club lake weather cam and information:

loch-sport.net/weather-cam



Loch Sport Primary School and our Bug Blitz.

One of our major focuses for Loch Sport Primary School has always been Environmental Education and learning about, and learning to care for, our spectacular setting in and around Loch Sport. This focus

has led us to partner with The Bug Blitz Trust and Dr. John Caldw to participate in a weekly Bush and Nature School Program.

The program utilises the Bug Blitz Mobile Field Laboratory to travel with students to investigate different habitats around their region. This has not only supported exercise, well-being, indigenous culture, biodiversity, science, and sustainability goals but fed directly into writing and reading programs as well as numerous numeracy activities as well.

The program has been designed around fostering curiosity in the environment and facilitating activities to help pursue and investigate these wonderings. Initially funded through an Active Schools grant, we have also benefitted from ExxonMobil's Bright Future Grants that have enabled us to purchase equipment and tools that we can use in the field and also back at school.

A recent activity was to scour our many photos we have and to write a quick note about it. Here is a sample.



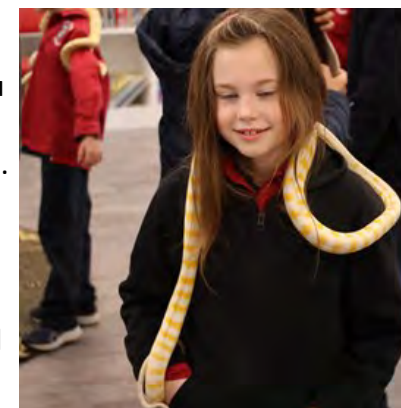
This is the bug blitz logo. We do bug blitz every week unless it gets postponed. We do all sorts of stuff like yabbing,

fishing, nature walks and so much more exciting stuff.

John even brings insects like spiders, scorpions, heaps of others that are just crazy. We go to all sorts of places like Seaspray, Seacombe, the Swing bridge, Ninety Mile Beach, and Glenmaggie.

Renee
On bug blitz you can have adventures you have never imagine. It is fun and amazing. You can learn different things.
Avery

Snake Busters talked to us about safety



around snakes. We were taught don't touch snakes in the wild, snake bite first aid and what the different snakes look like. Then we got to play with some turtles, Frogs, snakes, and a crocodile.



When we did Bug Blitz, Snake Busters came in and we got to hold snakes, lizards, turtles, frogs and some other reptiles.

It got me interested in reptiles and amphibians. So now I have 2 frogs, 2 lizards and a turtle.
Jacob



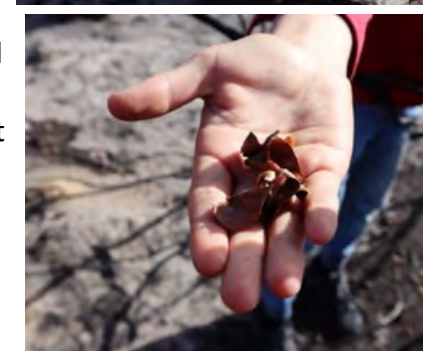
My tadpole has both front and back legs. Its tail is starting to fall off and it looks like a little frog. It sticks out from the rest of the tadpoles because of its short tail. Soon enough I will need to make an enclosure for all my froggies.
Brax



We found grass trees on the side of the road and they were burnt on the bottom but not on the top they were spikey on the bottom and tall some were big because they were old some were small because they are young. Native grass trees need fire to spread their seeds

After the bushfires we went with Bug Blitz to look at what the fire had done to the trees. We found these on the ground everywhere. John questioned us about where we thought what tree they had come from. These were Banksia tree seed pods.

Bug Blitz teaches us in a fun way about trees bugs, water ways.
Kurtis





Loch Sport Bowls Club



October has been a very big month for our Club, this year was our 40th anniversary. We celebrated on the weekend of Oct 14-15, a couple of very big and exciting days. Saturday, we played our first pennant games for the season. We played at home, so it just added to the enjoyment of our anniversary celebrations. Also, this year we now have two teams playing in the weekend competitions. Our teams had a lot of support from members and the community. It was wonderful. Sunday was our big day. It was fantastic to have so many former players and members come along. And many people from our town came to support our event. We are thankful to our local MP Danny O'Brien for attending and supporting our community. Speeches and presentations were made. Lunch was a huge success, so many people came and enjoyed the lovely lunch we provided. It was extremely hard work for all our members to get this event organised. The Club Committee and I thank you all for your dedication.



Bowls Lessons

We are holding Learn to Bowl days on **Wednesdays at 12.30pm**. Come along and our friendly members will help you learn to play the fun game of bowls- \$5.00 greens fee. The bar will be open, and we are also offering some tasty snacks.

Social Bowls

As always we are open for bowling on **Wednesday and Sunday afternoons from 12.30pm**. \$5.00 greens fee to play. Or just pop in to have a drink from our bar, catch up with friends or maybe order something to eat.

Darts

Darts nights are at **7pm to 9pm Mondays**. \$5.00 to play. A light supper is provided, and the bar is open. So, if you would like to play a social game just turn up and join in. Good for a laugh! Chocolates to be won. Darts supplied if you need them.



Function Venue

Loch Sport Bowls Club is a great venue for your next function, meeting or social gathering. We offer:

- a fully functional modern kitchen
- excellent indoor and outdoor undercover areas and a licensed bar
- the choice of self-catering or we can organise catering for you
- the provision of music or the option to bring your own.
- catering for small or large functions.

Enquire through our Loch Sport Bowls Club Facebook page.

Trivia

The trivia afternoons have been well attended with lots of fun and laughs. Thanks to Beck for consistently hosting this popular, monthly event and thanks to all that attended making it a fun and inclusive community event. Trivia will be returning in March 2024.

New Members are always welcome.

Sally

Loch Sport Bowls Club

For bowls enquiries please call

M: 0403 767 565/51460688

F: Loch Sport Bowls Club



Things are starting to get busy in the community garden now that the weather is warming up.

All the volunteers are busy raising many plants to plant out. Looking forward to some lovely fresh tomatoes, lettuce and other salad ingredients.

Our compost heap is continuing to produce lovely soil for our garden beds. Allowing our vegetables to grow so very well. The garden has been supplying a fairly steady supply of winter vegies. Now our attention has turned to the upcoming summer months.

Over the Cup Weekend we held a plant and vegetable sale. It was a resounding success. Many, many thanks to the lovely people who came along and supported us. Also thank you to Beck for allowing us to use her driveway – very much appreciated.



We now have our focus on participating at the Lions Market in early January. Looking forward to seeing everyone there on the day. Many thanks to the Lions for organizing such a wonderful market for Loch Sport residents and visitors. We will be holding our raffle, two prizes up for offer. The raffle will be drawn on the day so if you have purchased tickets already, hold onto them, maybe drop by and see us to purchase some more – you have to be in it to win it!!!! Lots of lovely items as well as some very good vouchers.

Don't forget that the garden is always on the lookout for more members/volunteers. If you are interested why not pop down to the garden on a Wednesday morning and see what we are all about. Are you aware that we are registered with CentreLink for approved people? You can find the garden via no 17 Central Ave, just follow the track to the end. There is also pedestrian access via the track on Toorak Ave opposite Mary St.

Mary
Loch Sport Community Garden
P 0456 123 005 (Trish)
A 17 Central Ave Loch Sport



The Melbourne Cup Eve market was very successful day, with the usual range of timber products and other items. The team at the Post Office Gallery are also providing an alternative opportunity for these items to be purchased.

House numbers are still being sold for The Loch Sport Neighbourhood House, costs \$5 per number and can be ordered through Men's Shed or Neighbourhood Watch. We encourage all households to ensure they clearly number their property for our emergency services.



Our next market/sausage sizzle will be in March.

The Men's Shed will be closed from Dec 25 and reopening Jan 10.

Thanks once again for supporting the Loch Sport Mens Shed during 2023.

Seasons Greetings and all the best for 2024.

If you are interested in joining the Mens' Shed feel free to drop by or contact us.

Murray Brown
President
Loch Sport Men's Shed
P 0428 460 902
5146 0902
A 11 Charles St
Loch Sport

PO Box 114 Loch Sport 3851



The Community Representative Group (CRG) is holding our annual general meeting on Dec 5 commencing at 4.30pm at the public hall on National Park Rd. A huge thank you for your support during 2023 it has been greatly appreciated.

Chris Hunter
President

A PO Box 129, LOCH SPORT VIC 3851
P 0456 300 300
E CRGlochsport@gmail.com

Loch Sport Senior Citizens Inc

Well here we are heading into the busiest time of the year, the town will be buzzing, The Melbourne Cup has been run, and won, hopefully with a few very lucky winners and the businesses will be in full swing. The Seniors will take this opportunity to launch their biggest fundraising raffle of the year, commencing in November with our members setting up outside Foodworks on Fri/Sat and the CFA Op shop on Sunday selling tickets- \$2 or 3 for \$5, every week until Dec 17.

1st Prize

- Combat Flight for one person
- A lighted Christmas tree with 10 scratchies.
- Marina Hotel Dining voucher.



2nd Prize.:

- Accommodation voucher for two nights in Loch Sport, for up to 10 people, pet friendly
- Handcrafted leather wine carrier with two bottles of wine
- Avon Hotel, Stratford dining voucher.

3rd Prize:

- Surf fishing rod, reel and line.

4th Prize:

- Hamper with Christmas cake, bottle of wine, chutneys and crackers.

Seniors will be in Christmas hiatus from Dec 7-Feb 19 2024. Our first meeting for 2024 will be at the Lions Park with a BBQ after the meeting starting at 10.30am. I would like to take this opportunity on behalf of the committee to wish you all a Merry Christmas and a

happy and safe New Year, see you all in 2024. Just a reminder NEW MEMBERS ARE ALWAYS WELCOME.

Christine Potter
Secretary

Loch Sport Senior Citizens

P 5146 0796, 0413 726 604

E clpotter6@bigpond.com

Our recent Seniors trip to Walhalla Pub and steam train.



LOCH SPORT TENNIS CLUB

The Tennis Club has been quiet of late with a touch of covid. However we are up & going again. Come along and meet the crew new members are

very welcome.

The President's cup will be held again January 2024, more information will be available soon. New memberships are very welcome and our courts are for hire for \$15.00 and can be paid at Loch Sport Hardware & Garden Supplies or the Caravan Park.

Sally Van Ekeren
Secretary

P 04274 60691

FB Loch Sport Tennis Club
Charlie Reserve
Loch Sport



Christmas is just around the corner and from Dec 1 you will see two symbolic Christmas trees being erected in Lake Street thanks to a grant through Wellington Shire

and the efforts of the LSBTA and locals.

Once again, the Loch Sport Business & Tourism Assoc. (LSBTA) will be organizing the annual New Years Eve fireworks. The fireworks will commence around 10:00pm to 10:30pm weather permitting. This is a family event and as such alcohol is not permitted. Please ensure your animals are in a safe location so they will not be panicked by the noise or light. The LSBTA would like to thank the sponsors who have again contributed to the cost of holding this event:

- * CMV Trucks - Clayton
- * Connect Remedial
- * C-Shell Real Estate
- * Lineal Homes
- * Loch Sport Caravan Park
- * Loch Sport Foodworks
- * Loch Sport General Store
- * Loch Sport Hardware & Garden Centre
- * Loch Sport Medical Centre
- * Marina Hotel
- * Mediation Institute
- * Russell Thomas Plumbing
- * Ventura Electrical
- * Wellington Shire

We trust the community will support these local businesses as they continue to support Loch Sport. If you would like to be a member of the LSBTA please contact us.

W visitlochsport.com.au

P 0414 635 587

E secretary@visitlochsport.com.au



Time is flying by, and summer is here hopes are high for some really good fishing over the next few months. All three iconic species in the lakes have flourished since the commercial netting operations ceased in the lakes nearly 4 years ago. Some monster Dusky

flathead have been caught in Lake Victoria not far from Loch Sport, large black bream have been found at several spots around the lakes and in McLennan Straits and the King George whiting are set to get on the bite as the water temperature reaches 18 degrees and above. The sea grass beds are flourishing and are seeded with significant mussel crops which is a sure sign that the estuarine waterway is healthy.



So it is definitely time to get the boat serviced and the fishing gear ready for a big fishing season ahead. Down on the 90 Mile Beach, the story is also good, salmon, sea-run flathead and gummy sharks are all being caught in good numbers.

The Annual General Meeting of LSFA is being held on Sun Jan 7, details of venue and format will be posted on the LSFA Facebook page shortly. Membership has grown to more than 160 now and the club is presently reviewing its administration processes in order to improve their ability to organise and execute events, provide better member communications, etc. We are grateful for the continuing support from our sponsor partners and we look forward to more success in achieving our prime purpose of promoting recreational fishing in Loch Sport and surrounding areas.

What's planned for this summer? Plans are nearly finalised for the popular summer events including the annual Loch Sport Surf Classic between Christmas and New



Year's Day, the "King George Challenge" in February and the "Fishing for Fun Day" over the Easter weekend. We will also hold regular social catch ups and of course, frequent outings out on the lakes and down on the 90 Mile Beach. Keep an eye on the Facebook page for details.

LSFA merchandise available from the Virtual Shop: Jacqui has topped up our stock and has plenty of quality club merchandise available, winter jackets, hoodies, polo shirts, fishing shirts, caps, hats, stubby holders and club branded clothing to fit adults and kids in a good range of sizes. There are now also beanies and headbands to keep away the winter chills. There are display cabinets at Marina Hotel & Bistro and at Lochy Coffee so take a look at the great range of gear, go to the "Shop Merchandise" tab on the LSFA website and order your selection. Payment can be made by credit card and we will deliver to you or you can pick up in Loch Sport—too easy! If you would like to be part of the action, go to the LSFA website and use the "Membership Application" page to send us your details. All applications are processed promptly and we will soon have a "Welcome" pack on its way to you, including your Membership card that entitles you to the following discounts:

- Loch Sport Marina Hotel – 10% off all main meal purchases (limited to two per visit)
- Loch Sport Caravan Park – 10% off all accommodation and bait purchases
- Loch Sport Foodworks – 12.5% off all tackle, bait and ice purchases
- Stratford Marine – 10% off all servicing charges

In the meantime, stay in touch with the latest news and planned activities. For further information, call President Peter Wickens on 0478 682 146 or Secretary Craig Holland on 0418 342 927.

Craig Holland
Secretary
F Loch Sport Fishing Association
W lochsportfishingassociation.com
E info@lochsportfishingassociation.com

Club 90 Mile Beach weather cam and current weather information:
lochsportfishingassociation.com/live-webcam



BUS TIMETABLES

LOCH SPORT/GOLDEN BEACH/SALE

MONDAY WEDNESDAY FRIDAY

Buses on this route are accessible for mobility aids. However, if a bus needs to be replaced we can't guarantee the replacement will be accessible. Occasionally there may be delays or last minute changes to the timetable. Timetables are correct at time of printing, but do change from time to time. Find up-to-date timetables on the PTV app, ptv.vic.gov.au or by calling the info line on **1800 800 007**

Major stops

1. Sale Hospital
2. Sale Rail Station
3. Gippsland Shopping Centre.
4. The Lakes National Park

MONDAY WEDNESDAY FRIDAY

Inbound to Sale

The Lakes National Park Entrance	12.00 pm	5.45 pm
National Park Rd to Cliff St, Lake St, Warren St, Government Rd.		
Longford-Loch Sport Rd, Longford-Golden Beach Rd to Community Hall (Paradise Beach by request)	12.35 pm	6.20 pm
Longford/GBeach Rd, LSport/Longford Rd to Longford.		
Sth Gippsland Hwy, York St, Foster St		
Reeve St, Macarthur St, Cunninghame St		
Pettit Dr to Sale Rail Station		6.55 pm
Pettit Dr, Macarthur St, Reeve St, Cunninghame St to Gippsland Shopping Centre.	1.05 pm	7.00 pm
Desaillly St, Foster St, Gutheridge Pde to Sale Hospital.	1.15 pm	7.10 pm

Outbound to Loch Sport

Gippsland Hospital/Gutheridge Pde	10.35 am	4.25 pm
Macarthur St, Pettit Dr to Sale Rail Station		4.35 pm
Pettit Dr, Macarthur St, Reeve St and Cunninghame St to Gippsland Shopping	10.45 am	4.39 pm
Desaillly St, Foster St, Sth Gippsland Hwy to Longford.		
Longford-Loch Sport Rd, Longford -Golden Beach Rd to Community Hall.	11.15 am	5.09 pm
(Paradise Beach by request)		
Longford/GBeach Rd, Longford/LSport Rd, Warren St, Lake St, Cliff St, National Park Rd, Swan St, Wallaby St, National Park Rd, Horder St, Geoffrey Ave, National Park Rd to The Lakes National Park Entrance.	11.50 am	5.44 pm



IMPORTANT REMINDER: What can happen if you feed wildlife?

Feeding wildlife can lead to a number of serious problems for our wildlife, especially our kangaroos. **Human food is not healthy for wild animals, and they do not need food from humans to survive as they are more than capable of foraging for their own food without human intervention and have been doing so for thousands of years.**

Wild animals have specialized diets, and they can become malnourished or die if fed the wrong foods. A moment's pleasure for you may result in future problems for animals and people. Over time they can become very comfortable and familiar with human interactions and can then become aggressive towards humans or alternatively humans may have sinister intentions towards the animal.

Bread products especially contain very little nutritional value for wildlife and can cause dental disease, severe gingivitis and abscesses, i.e. lumpy jaw, which can lead to death due to them being unable to eat. Processed seeds, bread and other foods that are not part of an animal's natural diet can make them very sick or kill them.

In fact, they can be full of sugars, sodium and carbohydrates. Sadly, these ingredients can be deadly, especially for kangaroos.

Wild kangaroos are exactly that, wild. Feeding them can severely inhibit their wild skills and result in starvation and population decline.

Kangaroos are natural foragers, and they need to maintain these skills to survive and pass the knowledge onto their young. When people feed kangaroos they become reliant on the free feed and stop foraging. As a consequence their young also don't learn the necessary foraging skills required for their development.

This is a significant long-term issue as they stop performing natural behaviours. When travelling into a wild animal's habitat we must be sure to not hinder that habitat or indeed cause changes to their natu-

ral behaviours. Additionally, if kangaroos stop foraging, there is a broader impact on their environment and the species around them.

Kangaroos are designed to eat grass. Their teeth are specifically positioned to grind the grass when they eat. If they continue to eat non-grass material their teeth are likely to wear down and prevent them from eating properly in the long run.



PLEASE DO NOT FEED OUR KANGAROOS – IT IS BEST TO KEEP OUR WILDLIFE WILD

Please donate now:

<https://ourhavenwildlifeshelter.org.au>

Or by direct deposit:

BSB: 633-000

Acct No: 15-203-7628

Acct Name: Our Haven Wildlife Shelter

You can also help by donating other goods: cleaning products e.g. dishwashing and laundry detergent, bleach, disinfectant, etc. Also red apples. Please note that we have an abundance of towels and material to make pouches so we don't need these.

Thank you

Theresa and Tony

REMEMBER: Call us if you require assistance.

T 0400 079 337

E t.1962@hotmail.com

F facebook.com/ourhavenwildlifeshelter/

W solo.to/rescueandcare

Loch Sport: -Karen McKie (and Wayne) 0414 982 611 or via Facebook/Messenger

Golden Beach: -Dale and John Cassidy 0438 288 641

Wildlife Victoria: 03 8400 7300

Help for Wildlife

Our Haven Wildlife Shelter

0400 079 337

Loch Sport-Karen McKie (and Wayne) 0414 982 611 or via Facebook/Messenger

Golden Beach-Dale and John Cassidy 0438 288 641

Did you know if you find an animal that requires medical care and you take it to your local vet you don't incur any out of pocket expenses?

Don't forget to check pouches for living joeys.

The Vets Mobile Service and Mason House Surgery

36 Cunninghame St, Sale Vic 3850

P: 03 5143 0577

Sale Veterinary Centre

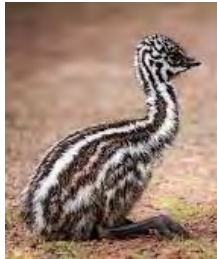
262 York St, Sale Vic 3850

P: 03 5144 3100

Ark Vet

320A York St, Sale Vic 3850

P: 03 5143 3118



Further Information

Please contact the Police regarding wild animals with devastating injuries, broken legs or that have no chance of survival:

Loch Sport Police P: 03 5146 0556

Sale Police P: 03 5142 2200

For the removal and collection of deceased animals on major roads call VicRoads P: 13 11 71

For the removal and collection of deceased animals on Council land or public property including (local) streets, footpaths, nature strips, parks, reserves, car parks and shopping areas please call Council or Council Ranger P: 1300 366 244

Wildlife Marine Rescue Emergency: P: 1300 136 017

The Wildlife Rescue App is for anyone that would like to or is able to assist with the rescue of an animal ifaqw.org.au/resources/wildlife-rescue-app

Injured Native Wildlife Tool wildlife.vic.gov.au/injured-native-wildlife/wildlife-tool

DELWP P: 13 61 86

Wildlife Victoria P: 1300 094 535/03 8400 7300

Wildlife Rescue Australia P: 1300 596 457 P.A.W.S.

Wildlife Services P: 0459 255 173

Snake removal and Relocation Services

Loch Sport Snake Catcher

ph: 0433 966 095

Gippsland Snake Catchers

ph: 0475 034 609/0402 804 184

Sale Wildlife Service and Snake Catcher

ph: 0459 255 173

Pest Management Services

Loch Sport Pest Control

ph: 03 9590 4410

Sale Pest Control

ph: 03 5144 4548

Gippsland Pest Control

ph: 13 15 46



November has started off well with the running of the Melbourne Cup Day luncheon and the Loch Sport RSL cup. Champion horse of the day was Jeannie Bennett romping home

to claim the cup in a stylish Irish fashion.

Our New Summer Menu and specials board are available now.

Pop in and check it out

Thursday nights

Each and every Thursday night the club is open from 4.30 pm with dinner served in the bistro from 6.00 pm following the ode.

Thursday night raffles where you could win a vegie box, meat trays and lots of other prizes. We also have the RSL Wheelie big wheel, spun every Thursday night, tickets are \$1 per spin with more great prizes to be won!

Saturday nights

Saturday nights the club is open from 4.30 pm with dinner served in the bistro from 6.00 pm following the Ode. Saturday night raffles sales from 6.00 pm with the draw at 7.30 - member draw follows. Members draw are held every Thursday and Saturday night you must be a financial member present at the club at the time of the draw to claim.

Have you added us to Facebook yet? Search for Loch Sport RSL and add us as your friend. Keep up to date with all of what's happening at the club - never miss any info to share!

The Loch Sport RSL is here to support our community - got a function? Message us to book and cater it for you - with a private room available for bookings please call the club to discuss and book! Don't forget we have a courtesy bus available to book on Thurs-Sat nights - please ensure you call the club to arrange pick up time and location. **Remember house numbers help us to find you.**

Craig Bennett

Loch Sport RSL Sub Branch President

P 5146 0841

F facebook.com/Loch-Sport-RSL

A Charlies Street Reserve Loch Sport

E lochsportsl@bigpond.com

W lochsportsl.org.au



Hasn't the year gone unbelievably fast? We're really excited to be coming into the summer holidays time where we will have lots of people here in Loch Sport enjoying the enormous range of facilities and sights of our beautiful village and lake.

It has been a busy past year at the Golf Club with lots of improvements done around the course, many functions run both for the Golf Club and other groups in our clubhouse, the return post covid lockdowns of our Loch Sport Bowl, Loch Sport Plate and the two day Loch Sport Open Tournament, some great golf scores. There was some unexpected excitement when the fire in early October came right to our boundary.

Come and enjoy our golf course

Green fee players are very welcome to our beautiful golf course. At only \$20 per adult for a day's play we offer a fun day out communing with nature in the lovely surroundings. Clubs and buggies are available. Full membership is available for only \$195. Keep an eye on our Facebook page for planned competitions and golf training over the summer.

October fire close call

Tuesday 3 October was a busy day for the golf club committee and members, providing sustenance for the CFA personnel based at the golf club, and patrolling the golf course boundaries monitoring the approaching fire and watching for spot fires. We notified the CFA immediately the fire reached our boundary alongside the 8th fairway and behind the 9th tee. Big thanks to our CFA who stopped the fire at that point. A big thank you to all the Parks and CFA teams who managed the fire.



Our fireys on a break

World Kangaroo Day

Well done to our member Michelle who organised the World Kangaroo Day function held at the Golf Club. As always, our resident kangaroos, taking a break from their usual gallery duties on the course, joined the celebrations on the 10th fairway just outside the clubhouse.

Peter Gross Memorial Day

Members of the Gross family returned for a day's golf and fun with our Loch Sport members remembering past member Peter Gross. It was a great day and raised a good amount which was donated to the Peter McCallum Cancer Research Centre. Peter was a very active and well-liked member of the golf club. A highlight was President Shaun Casley pre-



Enjoying 19th hole at the Peter Gross Memorial Day

senting a posthumous Life Membership to the family for Peter.

New Members Welcome

Our membership continues to grow, and our club is flourishing. We would like even more to join the Loch Sport Golf Club family for golf and fellowship, whether permanent resident or holiday maker. Got a Golf Australia handicap? You can join the competitions straight up. Never played? We'll be starting our training programme again for the summer. Contact Club Captain Richard Harvey on 0458 705 567 for details.

Adrian Froggatt

Secretary

Loch Sport Golf Club

M: 0458 705 567

P 5146 0922

W lochsportgolfclub.com.au

F Loch Sport Golf Club

COMMUNITY DIRECTORY

LOCH SPORT

Organisation	App	Web	Phone	
Ambulance, Fire, Police	Emergencyplus	ne.vic.gov.au	000	
SES	VicEmergency app	ne.vic.gov.au	132 500	
		police.vic.gov.au		
	GoodSAM Responder	ambulance.vic.gov.au		
VicEmergency			1800 222 229	
Wellington Shire			1300 366 241	
13YARN Aboriginal & Torres Strait Islander crisis support		13yarn.org.au	136 276	
1800RESPECT domestic, family and sexual violence support		1800respect.org.au	1800 737 700	online chat available
AusNet Services (power/outages)		outagetracker.com.au	131 799	
Beyond Blue	The Check-in App	beyondblue.org.au	1300 22 463	online chat available
Bureau of Meteorology (BOM)	BOM Weather App	bom.gov.au	1300 751 389	
Crime Stoppers			1800 333 000	
Dept Energy, Env & Climate Action		deeca.vic.gov.au	136 186	
Emergency Vic	VicEmergency app	emv.vic.gov.au	1800 226 226	
Family Support (Orange Door)		orangedoor.vic.gov.au	1800 319 351	
Family Violence (Safe Steps)		safesteps.org.au	1800 015 188	online chat available
Fisheries Victoria	Vic Fishing	vfa.vic.gov.au	133 475	
Gambling Help Online		gamblinghelponline.org.au	1800 858 858	
Gippsland Water		gippswater.com.au	1800 570 001	
Head to Health Counselling & Support			1415 443 798	
Justice of the Peace		Barry	0423 304 603	
Kids Helpline	Niggle	kidshelpline.com.au	1800 55 1800	online chat available
Lifeline		lifeline.org.au	131 111	online chat available
Loch Sport Angling Club		facebook.com/Loch-Sport-Angling	0491 153 689	
Loch Sport Boat Club		loch-sport.net	5146 0004	
Loch Sport Bowls Club		facebook.com/LochSportBowlsClub	5146 0688	
Loch Sport Business & Tourism Association		discoverlochsport.com.au	0414 635 587	
Loch Sport CFA		Facebook.com/CfalochSport	146 0997	

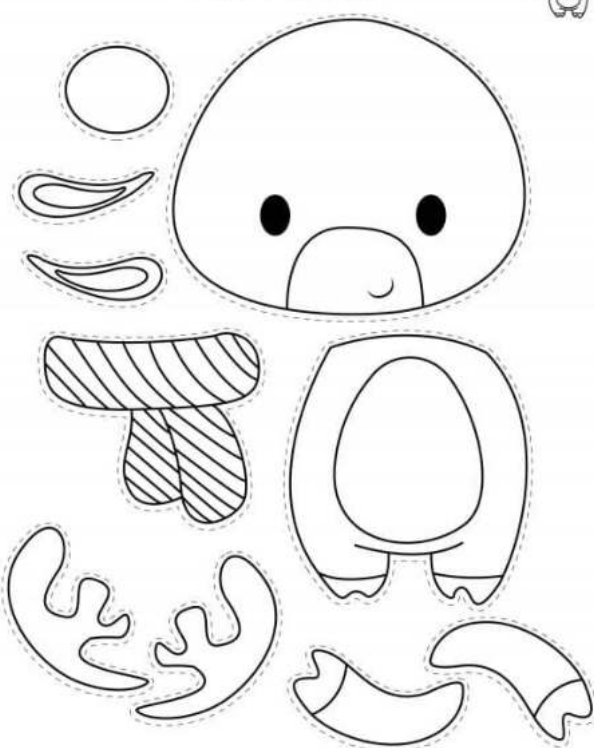
2024 pull out calendar

	January	February	March	April	May	June
1 Mo New Year's Day	1 Th	1 Fr	1 Mo Easter Monday	1 We	1 Sa	
2 Tu	2 Fr	2 Sa	2 Tu	2 Th	2 Su	
3 We	3 Sa	3 Su	3 We	3 Fr	3 Mo	
4 Th	4 Su	4 Mo	4 Th	4 Sa	4 Tu	
5 Fr	5 Mo	5 Tu	5 Fr	5 Su	5 We	
6 Sa	6 Tu	6 We	6 Sa	6 Mo	6 Th	
7 Su	7 We	7 Th	7 Su	7 Tu	7 Fr	
8 Mo	8 Th	8 Fr	8 Mo	8 We	8 Sa	
9 Tu	9 Fr	9 Sa	9 Tu	9 Th	9 Su	
10 We	10 Sa	10 Su	10 We	10 Fr	10 Mo King's Birthday	
11 Th	11 Su	11 Mo	11 Th	11 Sa	11 Tu	
12 Fr	12 Mo	12 Tu	12 Fr	12 Su	12 We	
13 Sa	13 Tu	13 We	13 Sa	13 Mo	13 Th	
14 Su	14 We	14 Th	14 Su	14 Tu	14 Fr	
15 Mo	15 Th	15 Fr	15 Mo	15 We	15 Sa	
16 Tu	16 Fr	16 Sa	16 Tu	16 Th	16 Su	
17 We	17 Sa	17 Su	17 We	17 Fr	17 Mo	
18 Th	18 Su	18 Mo	18 Th	18 Sa	18 Tu	
19 Fr	19 Mo	19 Tu	19 Fr	19 Su	19 We	
20 Sa	20 Tu	20 We	20 Sa	20 Mo	20 Th	
21 Su	21 We	21 Th	21 Su	21 Tu	21 Fr	
22 Mo	22 Th	22 Fr	22 Mo ANZAC Day	22 We	22 Sa	
23 Tu	23 Fr	23 Sa	23 Tu	23 Th	23 Su	
24 We	24 Sa	24 Su	24 We	24 Fr	24 Mo	
25 Th	25 Su	25 Mo	25 Th	25 Sa	25 Tu	
26 Fr Australia Survival Day	26 Mo	26 Tu	26 Fr	26 Su	26 We	
27 Sa	27 Tu	27 We	27 Sa	27 Mo	27 Th	
28 Su	28 We	28 Th	28 Su	28 Tu	28 Fr	
29 Mo	29 Th	29 Fr Good Friday	29 Mo	29 We	29 Sa	
30 Tu		30 Sa Easter Saturday	30 Tu	30 Th	30 Su	
31 We		31 Su		31 Fr		

Activities

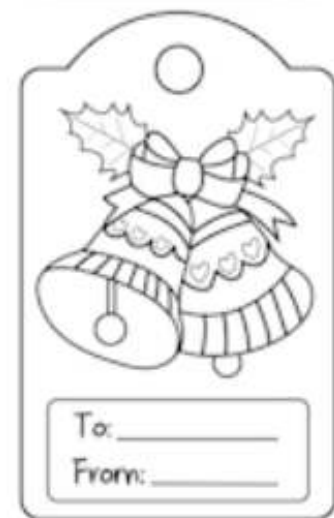
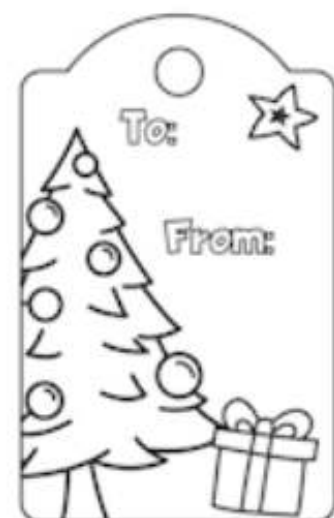
BUILD A REINDEER

Color, Cut and Build!



K	E	Y	P	O	H	S	K	R	O	W	R	SANTA
B	N	E	O	M	P	R	A	N	C	E	R	CLAUS
L	L	N	D	O	N	N	E	R	I	H	I	REINDEER
I	N	M	Z	M	I	L	K	N	O	G	V	ELVES
T	O	I	D	D	E	R	D	D	U	I	E	CHIMNEY
Z	R	H	E	U	A	E	A	O	Z	E	E	DASHER
E	T	C	O	C	E	N	R	I	E	L	E	DANCER
N	H	E	I	R	P	E	C	B	V	S	R	PRANCER
A	P	L	C	L	A	U	S	E	E	S	U	VIXEN
C	O	O	K	I	E	S	S	C	R	A	D	CUPID
I	L	I	D	I	P	U	C	A	A	N	O	DONNER
T	E	R	L	C	N	E	X	I	V	T	L	BLITZEN
S	A	C	K	B	E	L	L	Y	D	A	P	NORTH POLE
C	P	D	A	S	H	E	R	D	C	R	H	WORKSHOP

RUDOLPH
BELLY
SACK
SLEIGH
COOKIES
MILK



Free printable courtesy of PrintFree.net

Basic Life Support

D Dangers?

R Responsive?

S Send for help

A Open Airway

B Normal Breathing?

C Start CPR
30 compressions : 2 breaths

D Attach Defibrillator (AED)
as soon as available, follow prompts

Continue CPR until responsiveness or normal breathing return

Loch Sport Link Advertising Rates

1/9 of A4 page \$30 2/9 of A4 page \$60
1/3 of A4 page \$90 1/2 of A4 page \$100
Full A4 page \$200

Invoices will be emailed to advertisers after each edition. Please provide 1 months written notice before the next edition deadline to advertise, discontinue or change advertisement.
P: 5146 0145 E: lochsportlink@gmail.com

NOMINATE LOCH SPORT COMMUNITY HOUSE @

AS PART OF THE RITCHIES COMMUNITY BENEFIT PROGRAM

and help us generate extra funds.

1 Download or update the Ritchies Card App



2 Search and select our name when prompted to nominate a club, school or charity

3 Every time you shop at Ritchies and scan your app or card, Ritchies will contribute a percentage of the total to us



*CONDITIONS APPLY. Go to ritchies.com.au/loyalty for further information.

KNOW THE SIGNS

HEAT EXHAUSTION

Headaches
Nausea and vomiting
Rapid pulse
Extremely thirsty
Dry, swollen tongue
Disoriented, dizzy or delirious, slurred speech
Body temperature more than 40°C
Convulsions, seizures or coma
May be sweating, skin may feel deceptively cool

HEAT STROKE

Headaches
Nausea and vomiting
Rapid pulse
Extremely thirsty
Dry, swollen tongue
Disoriented, dizzy or delirious, slurred speech
Body temperature more than 40°C
Convulsions, seizures or coma
May be sweating, skin may feel deceptively cool

WHAT TO DO

> Lie down in shade or air-conditioning
> Drink water
> Cool compress or tea towel
> Cool shower or bath

WHAT TO DO

> Call 000 immediately
> Reduce temperature until ambulance arrives

How do you know if someone's having a stroke? Think...

F.A.S.T.



Think F.A.S.T. Act FAST! CALL 000
strokefoundation
Victorian Stroke Foundation

000
EMERGENCY

Community Dispute Resolution Service

Professional Support to deal with all types of disputes.

- Family Law
- Wills and Estates
- Workplace
- Neighbour disputes

Confidential & Means Tested.

Call 1300 079 345 office@interact.support





loch sport medical centre

GP appointments Fridays
Nurse Practitioner Mon- Frid

New patients welcome.
We bulk bill children under 16
and pension, concession card
holders
Call, book online or via Hotdoc

Referrals
Pathology
Prescriptions
Test requests
Women's health
Minor procedures
Chronic conditions
Health assessments
Employment medicals
Discuss & review results
Vaccinations, immunisations and injections



General Practitioner
Iain Nicolson



Nurse Practitioner
Rachel Hawkes-Bennett

56 Lake St
(near Foodworks)

5144 6899
lochsportmedical.com.au
info@lochsportmedical.com.au



scan to book an appointment



LOCH SPORT

PHARMACY

Friendly and professional service.



Supplying (dispensing) all types of prescriptions:

- Concession
- DVA
- Safety Net
- General & private
- Free Webster packs
- Free local delivery

9:00-5:00 Monday- Friday
9:00-midday
P: Emrah 5146 0873
54A Lake St Loch Sport



CENTRAL GIPPSLAND HEALTH

Loch Sport Community Health Centre
200 National Park Rd Loch Sport
P 5146 0349 E lochsport@cghs.com.au
Mon-Frid 9am-1pm

All services available by appointment only
Nursing, home nursing, wound care & welfare checks
Allied health Services

Podiatry & Foot Carer services, bookings via Sale Hospital on P 5143 8158
Bloods for pathology tests Monday, Wednesday, Thursday and Friday
HeadtoHealth Mental Health and Wellbeing service P 5143 7984

HEAD TO HEALTH

Not feeling like yourself lately? You're not alone. It's something most people experience at some point and there are simple things you can do that can help.

Head to Health Mental Health Services, Loch Sport Community Health Centre 5143 7984



LOCH SPORT MARINA HOTEL

1-3 Basin Blvd Loch Sport
contact@lochsportpub.com.au
03 5146 0666

OPEN 7 DAYS LUNCH AND DINNER

Monday -Takeaway Pizza
Tuesday - Pot & Parma \$25
Wednesday - Locals night
2 course meal for \$28
Thursday - Kids eat free
Friday - Meat raffles

Saturday - Lions lunchtime raffles
Sunday - Family Roast
Sunday Sesh 3 - 5pm
\$7 schooners, house wine and spirits
Sunday pizza from 5.30pm

Spoil Yourself Hair & Beauty Golden Beach



Our Services

- Hairdressing
- Facials
- Body Spa Treatments
- Facial Waxing
- Lash & Brow Services

BOOK NOW 0420 383 759

Facebook-Spoil Yourself Hair and Beauty

FOODWORKS

Loch Sport

Trading hours:
Jul- Sep 8am-7pm
Oct -Jun 8am-8pm

Open 7 days
WE LOVE LOCAL
48-52 Lake street, LOCH SPORT 3851

P: 03 5146 0353 E:lochsportsmkt@bigpond.com
Dairy | Deli | Meat | Bakery | Fresh Produce
Gifts | Fishing/Camping | Weekly specials



LOCH SPORT MOWING
MOWING & MORE

MINI DIGGER HIRE

MICHAEL RIKY
The Mower Man
PH: 0404 037 409

P.O.Box 892
Loch Sport 3851
lochsportmowing@gmail.com



For all your gardening needs
Commercial or Domestic
Big & small garden clean ups and maintenance
Gutter cleaning
Slashing
Hedges
Fully Insured. Covering Loch Sport, Golden/Paradise Beach & Seaspray



Yogi Bear's Lawn Mowing & Gardening Service
Owner- Operator: Graeme Tucker

Mobile: 0404 264 822 ABN: 1538 3283 468
Email: gtucker64@live.com

Registered with:

- NDIS
- Central Gippsland Health
- Latrobe Community Health
- Just Better Care
- Department Veterans Affairs
- Benetas


LAKEVIEW
HEALING & WELLNESS

BOWEN THERAPY
SPINAL FLOW
ACCESS BARS

0429 080 172

SALE - 13 Macalister St
LOCH SPORT - 69 Toorak Ave

www.lakeviewhealingandwellness.com.au

 **cls naturals**

SHOWROOM NOW OPEN

**All Hand Made
Soaps And Candles
All Natural Ingredients**

Come See Us at
5 Bellbird Street, Loch Sport
IG@clsnaturals.com.au
www.clsnaturals.com.au
Cheryl 0422 198 546

LEAPS & HOUNDS
Dog Grooming



FREE LOCAL PICK UP & DROP OFF

FULL GROOM FROM \$60
BATH FROM \$15

CALL OR TEXT PIYA
0432 863 708

STEEL GARAGES 
by FABRICATIONS PTY LTD

Phone Brian
0418 360 540

After Hours
(03) 5978 7055

**FOR A
FREE QUOTE**



GIPPSLAND
Butchers Block

1/102 YORK STREET SALE 5143 3020
GIPPSLAND BUTCHERS BLOCK QUALITY MEATS,
SEAFOOD, SALADS, LOCAL BEER & SMALLGOODS
• RETAIL • WHOLESALE • DELIVERY •

ELECTRICIAN

Mick Luke
Pty. Ltd.

For all your Electrical Needs Loch Sport,
Golden Beach & Seaspray

Underground power a specialty

Reg. No. 7669

Mobile 0438 460 641




LIZARDZ ELECTRICS 0438 460 512

Electrical Contract
Services

Underground supply
Wiring new houses
Switchboards
Lighting & power
Reliable and fair service
Jonathon Zdrazil
0438 460 512
lizards82@hotmail.com

Daniel O'Brien
Plumbing



Plumbing & Gasfitting
Servicing Loch Sport & Surrounding Area

0458 657 370
danielobrienplumbing@gmail.com

ABN 39 24 7905 155
P.I.B Licence 48695


art
gifts
craft
tuition
workshops

**veronica petelin art
studio/gallery**

Visitors most welcome
Open 11am-6pm Wed-Sun

36 Seventh Ave Paradise Beach
Vic 3851

0428 788 226



GREG HEAWOOD CONCRETING
LOCAL TO LOCH SPORT

ALL ASPECTS OF CONCRETING
35+ YEARS OF EXPERIENCE
0412 295 321
gregheawood6@gmail.com

SUPPORT LOCAL BUSINESS

CONTACT OUR OFFICE FOR ALL YOUR
REAL ESTATE ENQUIRIES


C Shell
REAL ESTATE

P: 5146 0946
9 Cliff Street, Loch Sport 3851
rachelle@cshellrealestate.com.au | renee@cshellrealestate.com.au



www.cshellrealestate.com.au

Loch Sport Plumbing & Air Conditioning

Introducing the Team

Our team consists of experienced and skilled tradies,
who go out of their way to please the client,
no matter what the task involves - from dripping taps to major refits.
No job is too big or too small to receive our full attention.

Russell Thomas, Nathan Flint, Michael Blake, Gary Kesper & Kate Mazar

Mini Excavator with Driver
New Homes & Renovations
Treatment Plants
Pumps & Bore Pumps
Hot Water Systems
Roofing & Spouting
Gas Installation
Split System Air Conditioning
Rental Property Maintenance
Sewerage Connections

We stand for quality workmanship, environmentally friendly solutions,
customer satisfaction and friendly advice.



**master
plumbers**
Expert. Committed. Professional.

Russell Thomas
3 Snipe Street, Loch Sport

0407 505 567

LICENCE NO: 21433
ABN: 19 320 416 038



LICENCE NO:
L160475



Making quality and service
our number one priority,

Lineal Homes offer an extensive range of Hampton's and Cottage Style home designs to suit every lifestyle. Ideal for families who enjoy a relaxed Gippsland lifestyle, the Lineal Homes Hamptons Design delivers an aesthetic that combines light and bright design elements which enhances a sophisticated coastal vibe.

Your new life starts here,
build your dream home today.

Lineal Homes

admin@linealhomes.com.au

linealhomes.com.au

0403 287 810



**The Watertank
Cleaning Company**
(THE WATER DOCTOR)

- Minimal water loss -
- Tanks can be **FULL** or low on water
- Lid / Liner Installation

Ph: 0428 594 565

www.watertankcleaning.com.au

Cleaning & Repairing Since 1996

Smithy's Bobcat & Excavator hire

LICENSED OPERATOR
FULLY INSURED
5.5 TONNE RUBBER TRACK EXCAVATOR
AUGER/LOG GRAB
10 MTR TANDEM TIPPER
BLOCKS CLEARED
HYDRAULIC HAMMER
SEPTIC & CONCRETE DEMOLITION

50-52 CARROLL ST LOCH SPORT

CALL GEOFF 0419 361 268



CARAVAN AND BOAT STORAGE NOW AVAILABLE

LOCH SPORT HARDWARE & GARDEN CENTRE

Hardware
Timber
Firewood
Elgas
Plumbing
fittings
Water Tanks
Water
Pumps
Delivery
available



Sand
Soil
Gravel
Mulch
Concrete
Mixes
Plants & Pots
Gardening
Home Gifts &
Decorations

Open 6 days

CLOSED TUESDAY

P: 5146 0513

66-68 Sanctuary Rd Loch Sport

E: zara@lochsporthardware.com

C & Z CONCRETING
FOR ALL CONCRETING NEEDS
CALL COLIN 0418 346 128

Exposed Aggregate, Garage Floors
Excavator, Track Bobcate & Tipper Hire



L S Plumbing & Gas

Small Jobs & Gas Fitting Specialist

45 years experience with prompt reliable service for
all your plumbing needs.

Located at 56 Central Av Loch Sport

Paul Gilchrist

03 5167 3624

0401115253

LSplumbingandgas@gmail.com

LIC NO: 114153

Danny O'BRIEN ^{MP}

State Member for Gippsland South

**SHOP LOCAL
AND SUPPORT
LOCAL JOBS**

Working for Gippsland South

(03) 5144 1987

danny.obrien@parliament.vic.gov.au

54B Cunninghame St, Sale VIC 3850

dannyobrienmp.com.au



THE NATIONALS for Regional Victoria



Lakes Mobile Mechanic

Andrew
0447534109

Recently relocated to Loch Sport with a young family and am looking forward to serving the local community.

Call for a no obligation quote today!

Loch Sport & surrounding areas



- * General servicing
- * Vehicle maintenance
- * Brake repairs
- * System diagnostics
- * Minor and major repairs
- * New and second hand part sourcing
- * Experienced
- * Reliable
- * Helpful
- * Honest
- * Affordable
- * Professional
- * 5 Star reviews online

Email: info@lakesmechanic.au

LOCH SPORT GENERAL STORE

Serving Loch Sport Community for over 20 years 2-4 Government Rd

The General Store is a licenced Post Office with a range of postal and financial services, including mail delivery. We have 24/7 fuel through an Outdoor Payment Terminal (OPT)

for use with Visa and Mastercard. This service improves local access to ULP, PULP and Diesel.

Our friendly staff can help with all services and products including a coin laundry, bike repair station, ice creams, groceries items, fishing tackle, camping equipment, basic hardware and plumbing products, batteries and automotive products with a good range of oils and boat and caravan storage. It is all here at the General Store.

Standard Opening Hours: Mon-Sat 8.00 – 5.00 Sundays 9.00 – 3.00

P: 5146 0300

E: lochsportgs@bigpond.com

W: loch-sport-general-store.business.site

[facebook.com/Loch-Sport-General-Store](https://www.facebook.com/Loch-Sport-General-Store)



COURTNEY CARTAGE

Water Delivery, Livestock, Machinery and Hay Cartage, Calf Buying and Lawn Mowing/General Yard Maintenance



5% of every delivery will be donated to Royal Children's Hospital Good Friday Appeal "Give that they may grow"



EFTPOS AVAILABLE

P: 0438 611 423

E: hello@courtneycartage.com.au

[facebook.com/courtneycartage](https://www.facebook.com/courtneycartage)



HACKS GLASS & SCREENS

- GLASS REPLACEMENT
- SHOWER SCREENS
- FLY SCREENS
- SECURITY DOORS
- WARDROBE DOORS

PH: 0407 343 083
hacksglass.com.au

GOT A CRACK?
CALL HACK!

Laurie's Driveways

- Levelled
- Gravelled
- Rolled

LochSport and district:
0412 542 140

WATER CARTAGE

Jack Bedggood

0419 444 428

Kajak
TRANSPORT

THE ROAD TO AN IMPROVED FINANCIAL FUTURE



FREE
Planning &
Support for
**Farmers &
Small Business**



RFCS
Gippsland

rural business is our business

1300 045 747
rfcsgippsland.org.au

Crisis to Recovery ...

Improve your financial and personal wellbeing with qualified and experienced finance, agri and business professionals with a range of support services focused on the financial viability and future security of farmers and business owners

CONTACT US

36 Cunninghame Street, Sale Victoria

☎ 5143 0577

☎ 0429 795 353

✉ thevets36@gmail.com

Online bookings vetsale.com.au
24 hr Emergency Care



THE VETS

Mobile Service & Mason House Surgery



BEST IN THE WEST
Plastering, painting, carpentry, repairs & maintenance. Located in Loch Sport

CONTACT DANIEL
☎ 0432 242 720
✉ bestinwest1981@gmail.com

SAYERS REPAIRS
ALL MECHANICAL WORK DONE
KEVIN SAYERS

FACTORY 1/9 PROGRESS RD
LOCHSPORT 3851

0419365423
kevin.sayers@hotmail.com




**R&C WATER
CARTAGE**

*Stainless Steel
food grade tanker*

0408 514 884

Find us on facebook

Loch Sport Lawyer
Paul Kenna Law
Conveyancing
Family Law
Wills & PofA
Witnessing Documents

03 4137 4000
04 1382 5479

KL
KENNA LAW
BARRISTERS & SOLICITORS

office@kennalaw.com.au

MINI EXCAVATIONS AND BLOCK SLASHING



Dave Dallas - Owner/Operator

Mobile: 0429 422 403

For those jobs that your shovel and lawnmower can't handle

Email: davedallas1600@gmail.com ABN 34 436 932 278 Fully Insured

ROOF PLUMBING

STORM WATER DRAINAGE

PUMP SYSTEMS

METAL ROOFING

RE-ROOFING

GUTTERS/DOWNPipes

COLORBOND CLADDING

Plumbing licence # 116035

MURRAY BLACK 0406 612 230

murrayblack02@gmail.com

located in Loch Sport

ANDYS WATER

PHONE: 0427 347 655



WATER CARTAGE

22,000 LITRE TANKER

NEED YOUR TANK FILLED?

CALL ANDY FOR FAST DELIVERY

7 DAYS A WEEK GIPPSLAND AREA

A & B SEPTIC CLEANING

SEVEN (7) DAYS A WEEK

24 HOUR SERVICE

Andrew & Bronwyn Miller

Free-call 1800 063 387

TELEPHONE 5144 6524

MOBILE 0427 347 655



PROPERTY IMPROVEMENT SERVICES

Rental property maintenance
Investment property refurbishment

Presentation of homes for sale or auction plus all aspects of property maintenance

Greg McNeil
Mobile **0407833933**

Email
propertyimprovement@bigpond.com
www.propertyimprovementservices.com.au

Fully insured, servicing all trades,
Pensioner discount*
*conditions apply

gbm
Gippsland Business Machines

19-21 Northland Dr,
Sale VIC 3850

1300 441 911

admin@gbmmachines.com.au

service@gbmmachines.com.au

sales@gbmmachines.com.au

CAR & CARAVAN REMOVAL



PHONE SAM

0488 471 163


Loch Alive Christian Centre ACC

Loch Alive is affiliated to Australian Christian Church

101 National Park Rd Loch Sport
(cnr Bream & National Park)

10am every Sunday with Sunday School activities

Pastor Pol Mijares



P: 0447 908 193
E: apollosoledad@gmail.com
facebook.com/lochaliveacc

WELLINGTON LIBRARY

Loch Sport Community House

Thursdays 1-4pm

New books and magazines available. Library members can request staff to book specific library items or book online and pick up & returns accepted.

A free library card is needed to utilise borrowing services from outreach, which staff can issue at outreach.

wellington.vic.gov.au/community/libraries

P: 5142 3146
E: library@wellington.vic.gov.au

Loch Sport Community Care

101 National Park Rd, Ph 0411 705 323

Thurs 1-3pm & Fri 10am-1pm

We are a not for profit group operated solely by volunteers to support our community, in partnership with Foodbank Vic, Fairshare and with generous local business and community donations. We do not receive any government funding all costs including our mortgage, insurance & utilities are covered by donations received from our clients and our take away food fundraisers. If you are new to Loch Sport or just visiting and hold a current concession card, please call in we would love to meet you.

All Pension, Health Care or DVA card holders are encouraged to access our services to enable us to continue providing our support.

LOCH SPORT



PH: 0411 705 323 PH: 0437 528 611

COMMUNITY CARE (INC)

We provide:

- Grocery items, bread, fresh fruit & vegetables for a \$10 donation
- Fairshare frozen single meals for \$1 donation
- Single serve home cooked meals cooked \$3 donation
- Coffee shop and chat Fridays 10.30-12pm (subject to volunteer availability)
- We endeavour to hold surplus stock for a community emergency situation

Barry & Annette Lett Funeral Directors

Care, Compassion & Service with dignity for the people of Gippsland

Prearranged and Prepaid Funeral Plans Available

Phone (03) 5143 1232

67 Macarthur Street Sale

24 Hour Personal Service



LOCH SPORT COMPUTER REPAIRS

Repairs, upgrades or custom builds.
On site service.

SSD Hard Drive Upgrade to improve performance.

Maintenance to improve performance.

Contact Barry

Phone: 0423 304 603



Celebrating life...with care.

Scott Rossetti & Staff

1390 Maffra Road Sale
03 5143 2477



GIPPSLAND FUNERAL SERVICES

www.gippslandfuneralservices.com.au

St Marks Anglican & Community Church Services

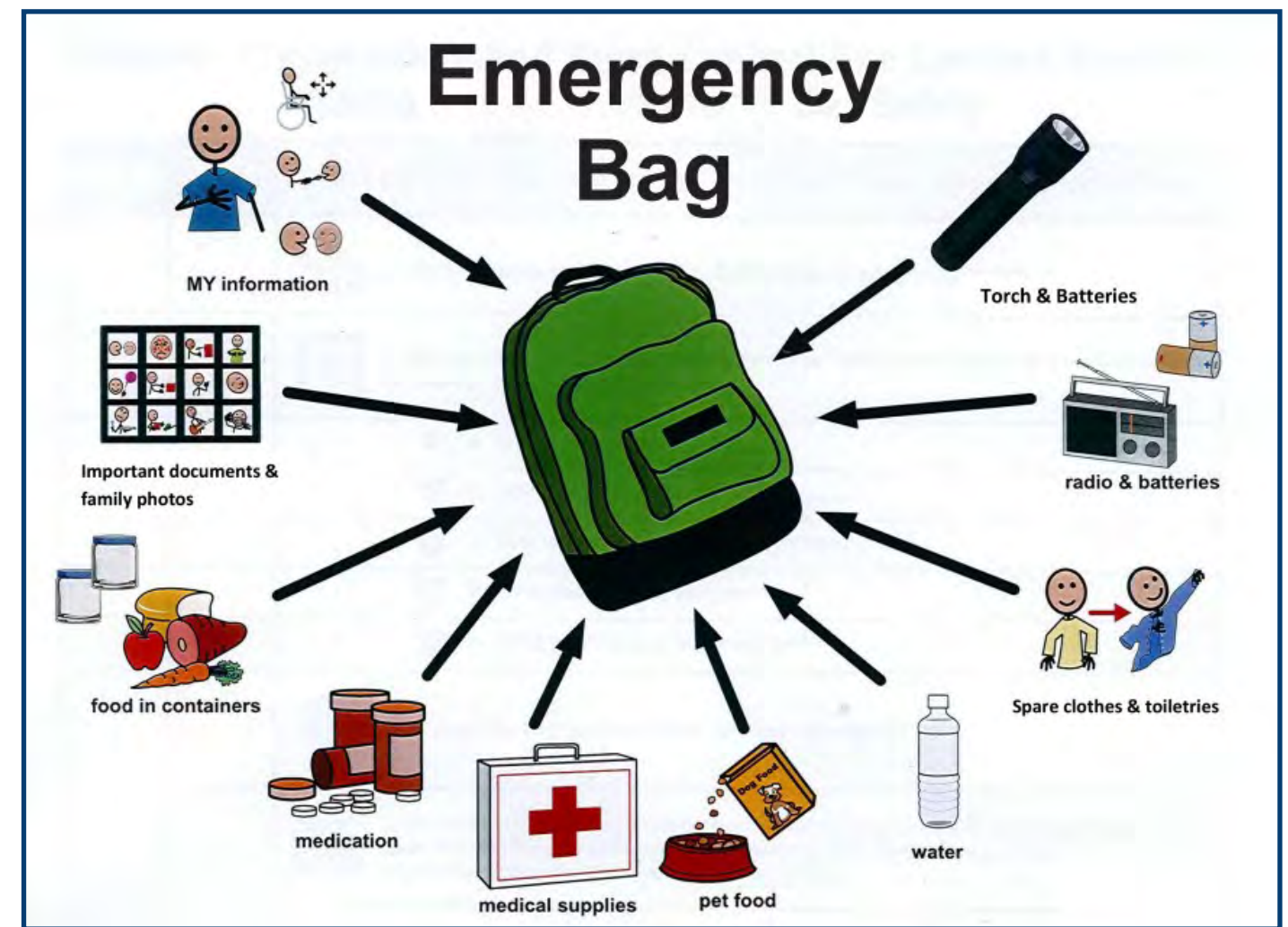
299 National Park Rd Loch Sport

2nd and 4th Saturday of the month
11am Catholic Church Service



BUSINESS DIRECTORY

Business	Phone	Email
A & B Septic Cleaning/ Andys Water Cartage	0427 347 655	abseptics@andbron.com.au
Barry & Annette Lett Funeral Directors	5143 1232	bja-lett@nex.net.au
Best in the West Plastering & General Maintenance	0411 690 636	bestinwest1981@gmail.com
BLA Fabrications Pty Ltd	0418 360 540	sheds@blafab.com.au
C & Z Concreting	0418 346 128	zara@lochsporthardware.com.au
CLS Naturals	0422 198 546	lg@clsnaturals.com.au
Community Dispute Resolution Service	1300 079 345	office@interact.support
Courtney Cartage	0438 611 423	horsome215@aussiebb.com.au
C-Shell Real Estate	5146 0946	rachelle@cshellrealestate.com.au
Daniel O'Brien Plumbing	0458 657 370	danielobrienplumbing@gmail.com
Foodworks Supermarket	5146 0300	lochsportgs@bigpond.com
Gippsland Business Machines	1300 441 911	tom@gbmachines.com.au
Gippsland Butchers Block	5143 3020	
Gippsland Funeral Services	5143 2477	
Greg Heawood Concreting	0412 295 321	gregheawood6@gmail.com
Hacks Glass	0407 343 083	hacksglass@gmail.com
Kajak Water Cartage	0419 444 428	kay@kajaktransport.com.au
Lakes Mobile Mechanic	0447 534 109	info@lakesmechanic.au
Lakeview Healing & Wellness	0429 080 172	kazbar08@hotmail.com
Laurie's Driveways	0412 542 140	
Leaps & Hounds Dog Grooming	0432 863 708	dannyfreddy1961@gmail.com
Lineal Homes	0403 287 810	admin@linealhomes.com.au
Lizard Electrics	0438 460 512	lizardz82@hotmail.com
Loch Sport General Store	5146 0300	lochsportgs@bigpond.com
Loch Sport Hardware & Garden Centre	5146 0513	zara@lochsporthardware.com.au
Loch Sport Kebabs & BP		foodtruck.pub for online ordering
Loch Sport Marina	5146 0243	reddigjau@gmail.com
Loch Sport Medical Centre	5144 6899	info@lochsportmedical.com.au
Loch Sport Mowing & Mini Digger Hire	0404 037 409	lochsportmowing@gmail.com
Loch Sport Pharmacy	5146 0873	
Loch Sport Plumbing & Air Conditioning	0407 505 567	grazia.thomas@gmail.com
Lochy Coffee	0423 927 754	
LS Plumbing & Gas	0401 115 253	Lsplumbingandgas@gmail.com
Marina Hotel	5156 0666	
Mick Luke Electrical	0438 460 641	mick.luke@live.com.au
Mini Excavations and Block Slashing	0429 422 403	davedallas1600@gmail.com
Murray Black Roof Plumber	0406 612 230	murrayblack02@gmail.com
Paul Kenna Law	0413 825 479	office@kennalaw.com.au
Property Improvement Services	0407 833 933	propertyimprovement@bigpond.com
R & C Water Cartage	0408 514 884	fmorgantransport@bigpond.com
Sam's Car & Caravan Removal	0488 471 163	
Sayers Repairs-Mechanic	0419 365 423	kevin.sayers@hotmail.com
Smithy's Bobcat & Excavator Hire	0419 361 268	smithys.g1@bigpond.com
Spoil Yourself Hair & Beauty	0420 383 759	
The Vets	5143 0577	thevets36@gmail.com
The Watertank Cleaning Company	0428 594 565	watertankcleaning.com.au
Veronica Petelin Studio	0428 788 226	veronicapetelin@me.com
Yogi Bear's Mowing & Gardening Service	0404 264 822	gtucker64@live.com



HOME EMERGENCY KIT

Your household should have an emergency kit prepared to help yourself and your family in an emergency.

Basic Emergency Kit

A basic emergency kit may include:

- Battery operated radio and torch (with spare batteries), candles and matches
- First aid kit
- Protective clothing such as sturdy gloves, face and dust masks
- Copy of home emergency plan
- Copies of important documents, or ensure copies are on a portable hard drive or web-based cloud drive
- Non-perishable food, eating utensils and drinking water for up to three days
- Camping stove or gas burner
- Whistle to signal for help
- Utility knife, duct tape, scissors, plastic sheeting
- Toilet paper, moist towelettes and rubbish bags
- List of contact numbers for your doctor, dentist, local hospital, chemist, insurance company, vet, Council and utility providers

Additional Items

If you are leaving early, evacuate or if a warning is issued, you may want to place the following additional items in your kit and have it ready to take with you:

- Mobile phone, power bank and charger
- Prescriptions, medications, sunscreen and toiletries
- Important documents such as passports, birth certificates and insurance papers
- Photographs, heirlooms and other irreplaceable items
- Pet supplies - food, water, bowls, leash etc.
- Protective clothing and strong shoes for each family member
- Pillows, blankets and sleeping bags
- Books and games for children
- Credit cards and cash
- Special items for babies the disabled or elderly in your family

It is recommended that you check the items in your emergency kit every year, and replace expired items with fresh items. Keep your emergency kit somewhere easy to locate. Make sure that other mem-

Emergency Planning Checklist

An All Hazards Preparedness Planning Checklist for those requiring assistance in an emergency.

Issue	Yes	No
Have you identified hazards/emergencies which could impact on you?		
Do you have a support team (Family/Neighbours/Friends) to assist you in an emergency?		
Do you have a written Emergency/Evacuation Plan?		
Does your support team know what your plan is?		
Have you practised your plan?		
If your plan is to evacuate, does your plan include: <ul style="list-style-type: none"> Contact numbers for your support team? Where you will go if you evacuate (Your Safer Place)? How you will get there? Eg. Who will transport you? What you need to take with you? Notifying neighbour/friends that you have left your home? 		
Do you have an Emergency Bag packed and ready? (see opposite page)		
Do you need to take equipment/resources if you evacuate? (Wheelchair - manual or electric, Wheelie Walker, Oxygen, Dosette, etc.)		
Do you have a copy of your health information in your bag? <ul style="list-style-type: none"> Health summary, including current medications/allergies? (Can be obtained from your Doctor) Prescriptions? (These can also be held at your chemist) Medicare card/Private Health Care information? 		
Additional equipment you may need? <ul style="list-style-type: none"> Medications/dressings? Clothing for 3 days, including toiletries Battery charger for your mobile phone, electric wheelchair etc. Additional equipment (Batteries for hearing aids, spare glasses, spare house keys) Important documents (Insurance papers, passport, birth certificate etc.) Personal items (Family photos, items that cannot be replaced) 		
If your plan is to remain at home during an emergency (Shelter in Place) do you have: <ul style="list-style-type: none"> Enough food and water stored for 7 days? A radio with spare batteries? Torches with spare batteries? Medications/dressings (First Aid Kit) etc. for 7 days? 		
Should a prolonged power outage occur would you have: <ul style="list-style-type: none"> The ability to contact your support team or call for emergency assistance (Retain a plug in phone/have a fully charged mobile or portable phone)? The ability to access your water supply and cooking facilities? The ability to heat or cool your house? Alternative lighting devices (Torches/solar lights)? 		
If you have a pet, do you have a plan for them in an emergency? If you plan to stay: <ul style="list-style-type: none"> Do you have supplies of dog food for 7 days? Do you have a cage and/or an area inside where they can be kept if needed? If you plan to leave: <ul style="list-style-type: none"> Do you have an emergency kit for your pet (With pet food, water, bowls, lead (muzzle if needed), vaccination documents etc.)? Is your Safer Place able to cater for your pets? 		

Emergency Contacts-always dial 000

Organisation	Phone	Web	App
Ambulance	000	ambulance.vic.gov.au	
Fire	000	cfa.vic.gov.au	VicEmergency app
Police	000	police.vic.gov.au	
SES	132 500	Ses.vic.gov.au	VicEmergency app
VicEmergency	1800 226 226		VicEmergency app
Wellington Shire	1300 366 244		

Emergency radio

Listen to your local emergency broadcaster. When you hear the emergency signal, pay special attention to the emergency messages. Always try to use more than one source for warnings and updates.

ABC AM - 828AM

ABC Gippsland - 100.7FM

TRFM - 99.5FM

GOLD - 1242AM

531 3GG - 531AM

Gippsland Community Radio - 104.7FM



VicEmergency app

The VicEmergency app aligns with the VicEmergency website to provide a centralised location for Victorians to access timely emergency information and warnings.

The app includes warnings and incident notifications for fire, flood, storm, earthquake, tsunami, weather warnings, shark sightings, beach closures and more.

In order to receive location specific app alerts when warnings are issued or incidents occur, you need to set up your watch zones.

You can download VicEmergency from the App Store or Google Play.



Australian Red Cross Get Prepared App

When emergencies happen there are lots of decisions to make and a lot to do. With the Get Prepared app you can prepare for the unexpected by completing your RediPlan and being better prepared for emergencies.

Get Prepared is an easy-to-use app that empowers you to make important decisions ahead of



time by completing your RediPlan. Co-created by Australian Red Cross and NRMA Insurance, it helps you create a personal emergency plan, so you can take care of yourself, your loved ones, and what's important to you.



For more resources including a RediPlan template visit

www.redcross.org.au/prepare/



Do you have an emergency plan?

The Emergency Planning Advice Service (EPAS) is designed to support people who have a disability, are older, or have a chronic or acute medical condition. The aim of EPAS is to improve how fire and emergency preparedness plans are developed and acted on for those who are at higher risk.

Emergency Planning Advice Service (EPAS) is an in home service co-delivered alongside Red Cross & CFA this ensures that participants can get help planning for other emergencies as well as fire.

How do I get involved?

Scan the QR code

Call 1300 366 244
ask for Community Preparedness Officer or

Email emergen-cym@wellington.vic.gov.au

Visit <https://forms.office.com/r/dHYFSxz1kq>



Community Newsletter-No 2

Beacon Swamp Track Fire-Loch Sport

12th October, 2023

An early start to the fire season has been experienced in several communities here in Gippsland.

We would like to thank the community for their efforts and combined support of each other in what has been a trying two weeks.

We would also like to reiterate that the fire season is not over, we are in for a large fire season ahead- this is definitely going to be a marathon not a sprint and the risk will remain for many more months to come.

Fire situation update

Fire burnt through approximately 3550 hectares of bushland southwest of Loch Sport township.

Firefighters have been blacking out hotspots around the fire perimeter with hazardous trees assessments continuing over the next few days.

Machinery works including slashing is now complete.

Crews will be focusing on treating hazardous trees around the fireground and patrolling the fire edge over the coming days. Wildlife rescue teams are in the area assisting injured wildlife.

Previous fire preparedness works, such as slashing and planned burning has greatly reduced fuel loads. These works greatly assisted firefighters in preventing the fire from impacting built assets.

Many tracks remain closed while firefighters carry out essential works to ensure fire affected areas are safe for public access.

Relief information

Wellington Shire Council can support you with a range of referral and relief options during times of emergency. Please give them a call to discuss your needs on Ph: 1300 366 244

Protect your health

Nurse-on-Call on 1300 60 60 24 (this is a phone service that allows you to discuss any health related issue with a registered nurse, 24 hours a day, 7 days a week for the cost of a local call from anywhere in Victoria).

Health Direct Website
www.healthdirect.gov.au/bushfires-and-your-health

Road closures

Information on updated road closures is available via 13 11 70 or the VicTraffic website traffic.vicroads.vic.gov.au

Mental health

It is normal to have strong emotional or physical reactions following a distressing event. There is always help available through:

Your doctor

Local mental health professionals

[Lifeline - 131 114](tel:131114)

[Beyond Blue - 1300 224 636](tel:1300224636)

[Mens Line - 1300 789 978](tel:1300789978)

[Kid's Help Line - 1800 55 1800](tel:1800551800)

[Parent Line - 13 22 89](tel:132289)

Family Violence

There is an increased risk of family violence after an emergency. Help is available. Visit www.vic.gov.au/familyviolence or call 1800 737 732 (1800RESPECT).

Useful information

More information is provided on your local council's website and social media channels
www.wellington.vic.gov.au/community/relief-and-recovery

Contact VicEmergency Hotline (1800 226 226) to speak to someone about recovering. They can connect you with people who can help.

Stay informed

- www.emergency.vic.gov.au.
- VicEmergency Hotline - freecall 1800 226 226.
- VicEmergency app.
- Facebook or Twitter
- Local radio ABC Gippsland

To access this information in other languages call the Translating and Interpreting Service on 131 450 (freecall) and ask them to call VicEmergency Hotline.

If you are deaf, hard of hearing, or have a speech/communication impairment contact National Relay Service on 1800 555 677 and ask them to call the VicEmergency Hotline.

Park Closures

For safety in nature and park closures head to:
www.parks.vic.gov.au/get-into-nature/safety-in-nature

Contact us

Feel free to contact our team at the Incident Control Centre in Heyfield during BH: Ph 5139 7777
Email: icchevy.pubinf@icc.vic.gov.au

LAKES ENTRANCE (OUTER)- VICTORIA

LAT 37° 53' S long 147° 58' E

Times and Heights of High and Low Waters

www.bom.gov.au/oceanography/projects/ntc/vic_tide_tables.shtml

http://www.bom.gov.au/oceanography/projects/ntc/vic_tide_tables.shtml

DECEMBER				JANUARY				FEBRUARY			
Time	m	Time	m	Time	m	Time	m	Time	m	Time	m
1 0417 0.94		16 0337 0.88		1 0108 0.84		16 0129 0.96		1 0133 0.92		16 0245 1.05	
0923 0.66		0851 0.76		0618 0.73		0658 0.55		0743 0.69		0904 0.48	
TH 1550 1.06		FR 1415 0.98		MO 1231 1.09		TU 1303 1.15		TH 1238 0.93		FR 1513 0.81	
● 2241 0.34		● 2142 0.43		1933 0.41		1947 0.27		1953 0.50		2047 0.58	
2 0509 0.97		17 0420 0.92		2 0157 0.86		17 0224 0.99		2 0214 0.94		17 0352 1.05	
1038 0.62		0956 0.73		0719 0.75		0801 0.56		0845 0.69		1043 0.48	
FR 1700 1.00		SA 1511 0.94		TU 1259 1.03		WE 1355 1.03		FR 1324 0.85		SA 1649 0.75	
2330 0.38		2226 0.43		2013 0.44		2035 0.36		2035 0.55		● 2141 0.64	
3 0559 1.02		18 0500 0.97		3 0244 0.89		18 0320 1.01		3 0300 0.97		18 0507 1.07	
1203 0.56		1107 0.66		0819 0.76		0910 0.56		0951 0.66		1228 0.43	
SA 1806 0.94		SU 1629 0.90		WE 1331 0.97		TH 1505 0.91		SA 1508 0.77		SU 2012 0.76	
		2307 0.43		2053 0.47		● 2123 0.45		● 2125 0.58		2240 0.67	
4 0609 0.41		19 0541 1.03		4 0328 0.92		19 0421 1.05		4 0400 0.99		19 0611 1.09	
0648 1.06		1218 0.57		0923 0.75		1036 0.54		1112 0.59		1332 0.37	
SU 1310 0.48		MO 1759 0.88		TH 1421 0.90		FR 1641 0.82		SU 1723 0.75		MO 2041 0.79	
1905 0.90		2348 0.43		● 2134 0.50		2213 0.52		2218 0.60		2340 0.66	
5 0644 0.45		20 0628 1.09		5 0411 0.96		20 0526 1.08		5 0516 1.04		20 0703 1.12	
0737 1.09		1317 0.45		1039 0.71		1218 0.48		1231 0.49		1415 0.32	
MO 1403 0.41		TU 1905 0.88		FR 1550 0.84		SA 1804 0.79		MO 1831 0.78		TU 1945 0.82	
1956 0.87				2217 0.52		2304 0.57		2314 0.59			
6 0116 0.50		21 0029 0.44		6 0459 1.00		21 0627 1.12		6 0622 1.10		21 0034 0.63	
0821 1.12		0720 1.15		1204 0.63		1332 0.39		1325 0.37		0747 1.14	
TU 1450 0.36		WE 1410 0.33		SA 1745 0.81		SU 1906 0.79		TU 1918 0.83		WE 1446 0.30	
2039 0.84		2001 0.89		2300 0.53		2356 0.59		2015 0.85		2015 0.85	
7 0146 0.54		22 0112 0.46		7 0552 1.05		22 0720 1.16		7 0009 0.56		22 0122 0.58	
0900 1.14		0815 1.22		1301 0.53		1426 0.32		0715 1.17		0826 1.15	
WE 1532 0.33		TH 1500 0.22		SU 1848 0.81		MO 1953 0.80		WE 1411 0.25		TH 1511 0.29	
2118 0.83		2053 0.90		2344 0.54				2001 0.87		2045 0.88	
8 0213 0.58		23 0157 0.49		8 0646 1.10		23 0044 0.59		8 0102 0.52		23 0205 0.54	
0935 1.15		0907 1.27		1346 0.42		0807 1.18		0803 1.24		0901 1.16	
TH 1612 0.31		FR 1551 0.14		MO 1935 0.83		TU 1506 0.27		TH 1455 0.15		FR 1535 0.28	
● 2156 0.82		● 2145 0.90				2032 0.82		2045 0.91		2118 0.90	
9 0230 0.62		24 0248 0.52		9 0028 0.54		24 0129 0.58		9 0155 0.47		24 0246 0.52	
1008 1.16		0959 1.31		0737 1.16		0849 1.20		0850 1.30		24 0935 1.15	
FR 1650 0.32		SA 1642 0.09		TU 1430 0.31		WE 1538 0.25		FR 1537 0.08		SA 1602 0.29	
2233 0.82		2241 0.90		2018 0.86		2108 0.84		2132 0.95		● 2151 0.91	
10 0240 0.65		25 0346 0.55		10 0113 0.53		25 0212 0.57		10 0247 0.43		25 0325 0.51	
1042 1.16		1050 1.33		0824 1.22		0927 1.20		0937 1.32		1007 1.12	
SA 1729 0.33		SU 1733 0.08		WE 1513 0.22		TH 1606 0.25		SA 1620 0.05		SU 1630 0.31	
2315 0.82		2341 0.89		2102 0.88		2143 0.85		● 2222 0.97		2224 0.93	
11 0302 0.68		26 0452 0.58		11 0200 0.52		26 0253 0.57		11 0343 0.41		26 0402 0.52	
1117 1.15		1142 1.32		0911 1.28		1001 1.19		1025 1.31		1035 1.09	
SU 1808 0.36		MO 1824 0.11		TH 1558 0.14		FR 1636 0.26		SU 1702 0.07		MO 1657 0.35	
				● 2149 0.90		● 2218 0.86		2314 1.00		2256 0.95	
12 0001 0.82		27 0043 0.90		12 0252 0.52		27 0333 0.57		12 0442 0.40		27 0441 0.54	
0337 0.71		0558 0.59		0958 1.31		1035 1.18		1114 1.28		27 1054 1.04	
MO 1153 1.13		TU 1232 1.27		FR 1643 0.10		SA 1708 0.28		MO 1745 0.14		TU 1722 0.40	
1847 0.39		1915 0.16		2240 0.91		2257 0.87				2324 0.97	
13 0053 0.82		28 0145 0.91		13 0348 0.52		28 0410 0.59		13 0006 1.02		28 0526 0.57	
0422 0.74		0700 0.61		1045 1.32		1105 1.15		0545 0.41		1112 0.99	
TU 1226 1.10		WE 1323 1.19		SA 1728 0.09		SU 1740 0.31		TU 1203 1.17		WE 1745 0.45	
1929 0.41		2005 0.24		2334 0.92		2336 0.87		1829 0.24		2352 0.99	
14 0149 0.83		29 0244 0.93		14 0449 0.53		29 0445 0.61		14 0058 1.04		29 0621 0.59	
0529 0.76		0802 0.62		1130 1.30		1130 1.11		0647 0.44		1142 0.93	
WE 1257 1.06		TH 1415 1.09		SU 1815 0.12		MO 1812 0.35		WE 1254 1.05		TH 1806 0.51	
2012 0.43		2056 0.33						1913 0.36			
15 0245 0.85		30 0340 0.96		15 0032 0.94		30 0016 0.89		15 0149 1.05			
0748 0.77		0908 0.62		0554 0.54		0526 0.64		0753 0.46			
TH 1331 1.02		FR 1514 0.98		MO 1216 1.24		TU 1146 1.06		TH 1354 0.92			
2057 0.43		● 2145 0.40		1900 0.18		1844 0.40		1959 0.48			
		31 0437 0.99				31 0055 0.90					
		1030 0.61				0637 0.67					
		SA 1630 0.88				WE 1206 1.00					
		2234 0.46				1916 0.45					



© Copyright Commonwealth of Australia 2021, Bureau of Meteorology

Datum of Predictions is Lowest Astronomical Tide

Times are in local standard time (UTC +10:00) or daylight savings time (UTC +11:00) when in effect

Moon Phase Symbols ● New Moon ○ First Quarter ○ Full Moon ○ Last Quarter

LOCH SPORT COMMUNITY HOUSE acknowledges the support of the Victorian Government to produce this publication.

