

smwgroup

engineering continuous improvement



MINING

Capability Statement



Company	SMW Group Limited
Year Established	2000
Website	www.smwgroup.com.au
Head Office	Level 2/145 East Street, Rockhampton QLD 4700
Southern Workshop	393 McLaughlin Street, Parkhurst, QLD 4702
Northern Workshop	49-57 Commercial Avenue Paget, QLD 4740
Postal Address	PO Box 5777 Red Hill, Rockhampton QLD 4701
Phone	1300 SMW GROUP (1300 769 47687)
Fax	07 4936 3056
Email	corporate@smwgroup.com.au

Contents

ABOUT SMW GROUP 5

ENGINEERING, PROJECT MANAGEMENT, DESIGN & DRAFTING..... 6

FABRICATION, MANUFACTURING & REPAIRS 8

FIELD MAINTENANCE AND SERVICING10

MECHANICAL & COMPLIANCE SERVICES..... 11

FEATURED PROJECTS 12

CLIENTS 13

HSEQ & COMMUNITY 14



A COMPLETE
SOLUTION, FROM
DESIGN AND
ENGINEERING TO
FABRICATION,
MANUFACTURING,
COMMISSIONING
AND SERVICING





What sets us apart?

- Long-term experience in the Bowen Basin
- Close proximity to the Galilee Basin
- Extensive workshop facilities and field capabilities
- Flexibility to work in rail, construction and mining
- Strong trade availability – workforce of over 400

ABOUT SMW GROUP

SMW is a leading one-vendor supplier and contractor for mining, rail and industrial manufacturing, field maintenance, servicing and fabrication.

Our extensive workshops in Rockhampton and Mackay are conveniently close to the Bowen and Galilee Basins. Our qualified staff offer full-service fabrication and manufacturing facilities, and back up our experienced field service teams who provide engineering, mechanical and cleaning services on-site across Central Queensland.

SMW provides the complete package, from innovative engineering-led design through to project management and delivery, site-qualified and experienced trade services and full installation and commissioning, plus long-term servicing and maintenance. Our mission is to be faster, smarter and more efficient.

We have decades of proven experience and knowledge in providing timely and efficient service, backed up by our extensively equipped Parkhurst and Paget workshop facilities and our field service crews.

Our services can be broadly categorised into the following:

- Engineering, Design & Drafting
- Fabrication, Manufacturing & Repairs
- Field Maintenance & Servicing
- Mechanical & Compliance Services



Engineering, Project Management, Design & Drafting

SMW Group employs a team of in-house specialty engineers to ensure the safest, smartest and most innovative designs are created for your project.

We can cater for everything from small one-off jobs up to major projects. SMW Group can act as a principal contractor to see an entire project through from design to installation, or work as a one-vendor subcontractor to carry out works efficiently.

We make innovation and engineering-led design a major focus for all projects, giving you a result that saves time and money.

Our qualified engineers integrate into our manufacturing, construction and fabrication process from the very beginning, creating tailored designs to suit your needs and increase your project's efficiencies.

We use the latest technology, including 3D scanning, to provide accurate and detailed records of repairs and to design new solutions.

- Conceptual design
- 3D scanning
- 3D CAD modeling and visualisation
- 3D printer modelling
- Drafting of fabrication/shop drawings
- Finite element analysis and reporting (FEA)
- Engineer certification and commissioning
- Modifications to plant, equipment and vehicles
- Non-destructive testing (NDT) for plant and equipment
- WTIA Weld Inspections



Our Workshop Capacity

- Over 10 acres of workshop facilities
- 5,500m² fabrication facility under roof
- 6 overhead cranes
- 3,000m² mechanical rebuild and service facility
- 1,100m² abrasive blasting and painting workshop

ABRASIVE BLASTING & PAINTING

SMW's workshop and fabrication facilities are supported by a 1,100m² abrasive blasting and painting workshop, able to finish jobs to individual client paint specifications.

An accredited paint inspector supports our facility, integrating full quality assurance systems to ensure our blasting and painting jobs meet the strictest mining specification requirements and exceed recommissioning standards.

Our fully undercover facilities ensure that weather delays do not impede progress.

Fabrication, Manufacturing & Repairs

SMW Group's Parkhurst and Paget facilities are fully equipped and ideally located to ensure timely supply of service and materials to the Bowen and Galilee Basins.

FABRICATION & MANUFACTURING

Our fabrication workshops support our capabilities with quality tooling, equipment and mobile plant, including overhead and Franna cranes. Other unique equipment within our workshops are our robotic welding and submerged arc welding machinery, our Plasma Profile Cutting equipment, and our CNC 5-Axis Laser profile cutting and machining equipment.

From our facilities, we are able to design, manufacture and deliver:

- Rear dump truck bodies up to and including Caterpillar 797, Komatsu 930E and Komatsu 830E
- Dragline, excavator and loader buckets up to 100 metre capacity
- Dozer blades and track frames
- Crushing equipment and screens
- Conveyor systems
- Roof trusses and beams
- Walkways, staircases, platforms, ladders and handrailing
- Machine guarding
- Mobile plant repairs
- All general light to heavy fabrication
- Turn-key civil projects
- Repairs to rail wagons and wheel sets
- Full rail wagon manufacture

Our experienced trade professionals can then install and commission plant on site. All SMW Group work is covered by our ISO9001 accredited quality assurance program.

TRADE SERVICE CONTRACTING

Our strong local subcontractor networks throughout Queensland means that SMW Group can deliver full civil construction projects, including earthworks, concreting, and any specialist trade fit-out and commissioning.

While our trade workforce covers the essentials and are available 24/7 for emergency breakdown and repairs, our project management team can work with you to deliver a full solution anywhere in Queensland.



OUR REGIONALLY-
BASED TRADES
AND EXPERIENCED,
SITE-COMPLIANT
PERSONNEL ARE
READY TO START
WORK NOW

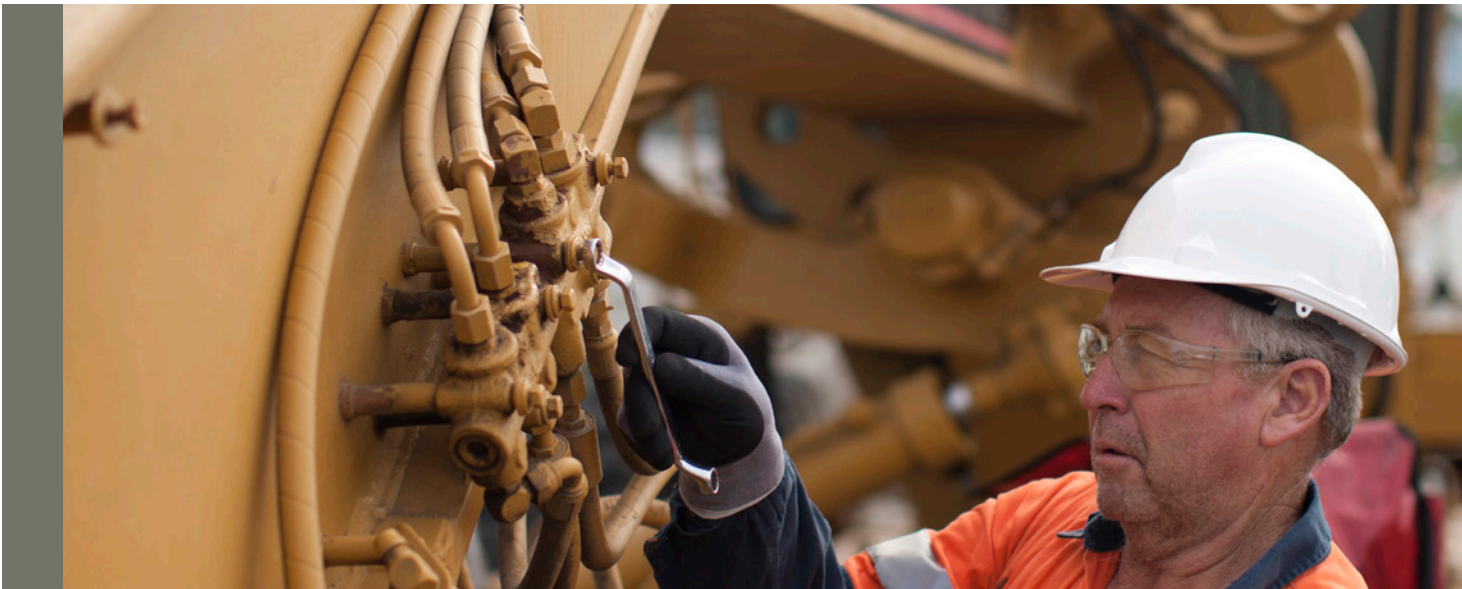


Field Maintenance & Servicing

SMW Group provides full-service field maintenance to a number of sites across the Bowen Basin, with an easy reach into the Bowen and Galilee Basins. Our teams of qualified tradespeople and site-compliant mobile maintenance vehicles are ready now to start work on shutdowns, recurring maintenance and long-term projects.

Across welding, electrical, fabrication and mechanical trades, SMW Group is your one vendor solution for fast, effective field maintenance to get the job done.

- Field service support for all field maintenance and roster top-up support
- Reactive/breakdown maintenance with 24/7 availability across all trades
- Loader, excavator and dragline bucket repairs, refurbishment and construction
- Planning of all on and off-site maintenance, shutdowns and routine repairs
- Wash plant and infrastructure maintenance and repairs
- Ancillary equipment repair and maintenance Including lighting plant upgrades to LED
- Test, tagging and certification of portable RCDs, welders and generators
- Electrical commissioning, installations and alterations, plus onsite audits
- Ground-up asset rebuilds to ensure cost-effective machine availability
- Conveyor system maintenance and repairs, including mobile crushing plants
- On and off-site mining truck body repairs and liner replacements (up to 930E/797F)
- Fully certified repairer for pressure vessels and fuel tanks
- Industrial cleaning solutions for fixed and mobile plant
- Specialised excavator maintenance teams to support service days and shutdowns
- Mine site cab conversions for positive pressure A/C systems and monitors



Mechanical & Compliance Services

VEHICLE MAINTENANCE, COMPLIANCE & REPAIR

SMW Group's Mechanical workshop is equipped to carry out maintenance, repairs, overhauls and compliance checks on all industrial and earthmoving equipment, medium and light vehicles and ancillary equipment including pumps, lighting, plant and service vehicles.

We provide roadworthy certificates for light, medium and heavy vehicles, either at our workshop facility or through our convenient mobile roadworthy station. Routine vehicle servicing and breakdown maintenance are also part of the SMW Group service – you can trust us to keep your fleet running.

Mechanical services provided by SMW Group include:

- Medium and light vehicle service and repair
- Roadworthy inspections for any vehicle, from light to heavy
- Supply and installation of all parts and components required for compliance checks and certifications
- Truck and trailer wheel alignment
- Certified brake tests on all vehicles
- Heavy Combination and highway servicing
- Allison transmission servicing and repair
- Electrical and auto electrical preventative maintenance and statutory checks
- Reactive/breakdown maintenance
- Electrical services and maintenance on heavy machinery
- Medium to light vehicle and heavy machinery air-conditioning

HYDRAULICS

SMW Group's hydraulics team are experienced in systems design, installation, manufacture and commissioning, for all heavy industrial hydraulics.

SMW Group's hydraulic capabilities include:

- Hydraulic design, manufacture and installation
- Hydraulic & Pneumatic cylinder reconditioning
- Valve rebuild and testing
- Piston, gear, vane pump and motor rebuild and testing
- Design and manufacture of specialist equipment

CRANE SERVICES

SMW Group are the authorised Hiab dealers for Central Queensland. In addition to this, we offer certification, inspection and repair of vehicle loading cranes and elevated work platforms from our Parkhurst facility. For safe load handling solutions with any heavy industrial application, SMW Group has the expertise and the equipment to get the job done.





Featured Projects

SOUTH WALKER CREEK WASHPLANT

SMW Group undertook two separate projects at the South Walker Creek site, both related to wash plant upgrades. Our flexibility and willingness to work to meet a client's needs is demonstrated in the scopes and supported by our engineers, workshop capacity and inducted and experienced field teams.

Scope 1 included:

- Structural installation accompanied by required upgrades for safety and capacity
- Fabrication completed in-house to a pre-existing design
- Upgrade screens and extend wash plant
- Completed by our team of site-inducted trades, supported by our mobile field service equipment and crew

Scope 2 included:

- Upgrade to underpans at train load-out
- In-house design, fabrication and installation
- Accompanying upgrades to conveyor structure
- Completed end-to-end by SMW Group's team, including engineers, trades (workshop and field staff) and supervision

KRESS HAULER FLEET REPAIRS

SMW Group are completing an overhaul of an entire Kress coal hauler fleet for a Bowen Basin client. Each individual vehicle overhaul takes an average of 12 weeks, with the end-to-end scope entirely completed on-site in our Parkhurst workshop, by our team of qualified trades.

Scope:

- Engine full mechanical rebuild or replacement
- Electrical re-wiring
- Fabrication upgrades and repairs
- Abrasive blast and re-paint

FIT-FOR-PURPOSE SOLUTIONS

SMW Group has never accepted the status quo when it comes to the delivery of a project. If our team of in-house engineers can build a solution to specifically suit the need of a client, we will.

Examples of these fit-for-purpose solutions include:

- Our award-winning hydraulic lifting system
- Our complete design and build of an amphiroller for an industry client
- The use of automated butt welding system to deliver quality pipe welding
- The ability to design and build a materials processing plant solution for a client in the Pilbara, Western Australia as SMW's solution was the most cost and time effective



Clients

SMW Group has completed projects for a range of industry, transport and corporate clients.

Minerals/Quarries

- Earth Commodities
- Sibelco
- Downer Blasting Services (Bajool)

Mining

- BHP Billiton
- Wesfarmers Curragh
- Coronado Global
- Anglo American
- Yancoal Australia
- Thiess
- Golding Contractors
- Adani Mining
- Glencore
- Jellinbah Group
- QCoal
- Peabody Energy
- Batchfire Callide
- Sojitz Coal
- Stanmore Coal
- Downer Mining

Heavy Industry

- Ergon
- Hastings Deering

Transport

- Aurizon
- Austrak
- Fitzroy Towing
- Linfox
- Armaguard

Commercial

- Surf Lakes
- Bidvest
- Coles
- Woolworths
- JJ Richards
- Rockhampton Regional Council



HSEQ

SAFETY, TRAINING AND THE ENVIRONMENT:

we commit to high standards for our team and yours.

Community

SMW Group are proud Central Queenslanders and take great pride in supporting our community and staff. We assist a range of community groups and events through sponsorships and financial contributions.

We recognise the importance of building strong foundations for social responsibility and do so through a number of initiatives, including:

- Central Queensland Capras
- Rockhampton Rugby League Referees
- Rockhampton Miss Showgirl
- Central Rodeo Cowboys Association (CRCA) Rodeos
- Australian Enduro Motocross
- Moura State School P&C Sportsmens' Dinner
- CFMEU Moura Charity Golf Day
- Yeppoon Surf Life Saving Club
- Blackwater Crushers
- Central Highlands Multicultural Rugby League
- Rockhampton Bluebirds United Softball
- Moranbah Netball Association
- West Tigers Mackay RLC
- Yeppoon Swans AFL
- Capricorn Dirt Riders Enduro Club
- Broadmeadows Clay Target Club
- The Caves P&C
- The Caves Rodeo
- The Caves Show
- Oceania Hockey Federation

Health and Safety

SMW Group is dedicated to the safety and wellbeing of our team and yours. Our safety policies and procedures are accredited to AS/NZS4801 and ISO 45001:2018. SMW Group also complies with the provisions of the Workplace Health and Safety Act 2011 and its associated Regulations, Codes of Practice and Australian Standards.

SMW Group aims to achieve zero workplace incidents and accidents at all our operations and as such we place the safety of employees, contractors, and the public as our first priority.

In order for SMW Group to provide a healthy work environment, the Rockhampton facilities and all field service vehicles are considered to be non-smoking areas. This is to ensure the comfort, safety and rights of all people, particularly those who may be at risk of exposure to the hazards of passive smoking.

SMW Group will work with clients to ensure any of your project-specific requirements are incorporated into our procedures where necessary.



HSEQ

Environment

SMW is conscious of the effect our operations could have on the environment. It is our policy to achieve the highest practical standard of environmental care in all of our activities as an organisation. SMW Group will achieve this objective by applying the principles of ecologically sustainable development.

Quality

SMW Group aims to provide an excellent standard of engineering and to ensure that our services both meet client needs and stand the test of time. Our goal is to deliver our services at the required quality and cost in a safe manner with due regard to client concerns and needs. Our Quality Management System, accredited to ISO9001:2015, will ensure that our operations are conducted in a manner that ensures quality and consistency with SMW's requirements.

Training

As a major employer of trade apprentices, SMW Group understands the importance of creating and maintaining a safe and healthy working environment. All employees are accountable for the health and safety of fellow employees and visitors.

Our mandatory Online Induction process ensures that all employees and subcontractors are fully aware of and compliant with SMW Group's Zero Harm philosophies and all relevant policies and procedures, before ever stepping foot on a job site.

Our goal is to actively reduce the risk of injury to employees, contractors, and visitors by focusing on the areas of hazard/risk management, injury prevention strategies, and continuous improvement in Workplace Health and Safety.

As a listed company (NZX:SMW), SMW Group operates to the highest standards of policy and governance.

smwgroup

engineering continuous improvement

1300 SMW GROUP

www.smwgroup.com.au

