

smwgroup

engineering continuous improvement



LOCAL INDUSTRY Capability Statement



Company	SMW Group Limited
Year Established	2000
Website	www.smwgroup.com.au
Head Office	Level 2/145 East Street, Rockhampton QLD 4700
Southern Workshop	393 McLaughlin Street, Parkhurst, QLD 4702
Northern Workshop	49-57 Commercial Avenue Paget, QLD 4740
Postal Address	PO Box 5777 Red Hill, Rockhampton QLD 4701
Phone	1300 SMW GROUP (1300 769 47687)
Fax	07 4936 3056
Email	corporate@smwgroup.com.au



FEATURED PROJECT

Surf Lakes Prototype – Central Queensland

SMW Group were engaged as the principal contractor for the Surf Lakes Prototype project in Central Queensland. This project is an example of SMW's ability to take world-class design and turn it into reality through our quality fabrication and project management.

FOR SURF LAKES, SMW GROUP OVERSAW:

- Civil subcontracting for initial earthworks and site development
- Fabrication and manufacturing of all steel components
- Assembly and on-site installation
- Local supply chain management

When this project is complete, it is expected to revolutionise surfing with technology that produces up to 2,400 surfable waves per hour.

Contents

About SMW Group	6
Engineering, Project Management, Design & Drafting	8
Fabrication, Manufacturing & Repairs	9
Mechanical & Compliance Services	13
Innovation & Automation	15
Clients	16
HSEQ & Community	18



A COMPLETE
PROJECT SOLUTION,
FROM DESIGN AND
ENGINEERING TO
FABRICATION AND
INSTALLATION





What sets us apart?

- Full principal contractor ability
- Extensive workshop facilities
- Strong trade availability – workforce of over 400

ABOUT SMW GROUP

SMW Group are the Central Queensland leaders in complete project management and delivery. We operate two premier facilities for fabrication and manufacturing, also specialising in heavy to light equipment servicing and repair.

SMW Group provides complete turn key solutions, from innovative engineering-led design through to project management and delivery, trade services and full installation and commissioning. Our mission is to be faster, smarter and more efficient.

We have decades of proven experience and knowledge in providing timely and efficient service to the Central Queensland heavy industrial sector, as well as corporate and local government clients, backed up by our extensively equipped workshop facility at Parkhurst.

Our services can be broadly categorised into the following:

- Engineering, Project Management, Design & Drafting
- Workshop Fabrication & Repairs
- Abrasive Blasting & Painting
- Mechanical & Compliance Services



CREATING
TAILORED,
AWARD-WINNING
INNOVATIVE
PROJECTS WITH
AN ENGINEERING
FOCUS



Engineering, Project Management, Design & Drafting

SMW Group employs a team of in-house specialty engineers to ensure the safest, smartest and most innovative designs are created for your project.

We can cater for everything from small one-off jobs up to major projects. SMW Group can act as a principal contractor to see an entire project through from design to installation.

We make innovation and engineering-led design a major focus for all projects, giving you a result that saves time and money.

Our qualified engineers integrate into our fabrication process from the very beginning, creating tailored designs to suit your needs and increase your project's efficiencies.

- Conceptual design
- 3D scanning
- 3D CAD modeling and visualisation
- 3D printer modelling
- Drafting of fabrication/shop drawings
- Finite element analysis and reporting (FEA)
- Engineer certification and commissioning
- Modifications to plant, equipment and vehicles
- Non-destructive testing (NDT) for plant and equipment
- WTIA Weld Inspections

Fabrication, Manufacturing & Repairs

SMW Group's two facilities are fully equipped and ideally located to ensure timely supply of service and materials to commercial and heavy industry clients throughout Central Queensland.

FABRICATION & MANUFACTURING

Our fabrication workshop supports our capabilities with quality tooling, equipment and mobile plant, including overhead and Franna cranes. Other unique equipment within our workshop is our robotic welding and submerged arc welding machinery, our Plasma Profile Cutting equipment, and our CNC 5-Axis Laser profile cutting and machining equipment.

From our facility, we are able to design, manufacture and deliver:

- Structural steel fabrication and repairs
- Crushing equipment
- Conveyor systems
- Roof trusses and beams
- Walkways, staircases, platforms, ladders and handrailing
- Machine guarding
- Mobile plant repairs
- Repairs to rail wagons and wheel sets
- Full rail wagon manufacture
- All general light to heavy fabrication

Our experienced trade professionals can then install and commission plant on site. All SMW work is covered by our ISO9001 accredited quality assurance program.

Our Workshop Capacity

- Over 10 acres of workshop facilities
- 5,500m² fabrication facility under roof
- 6 overhead cranes
- 3,000m² mechanical rebuild and service facility
- 1,100m² abrasive blasting and painting workshop



Fabrication, Manufacturing & Repairs

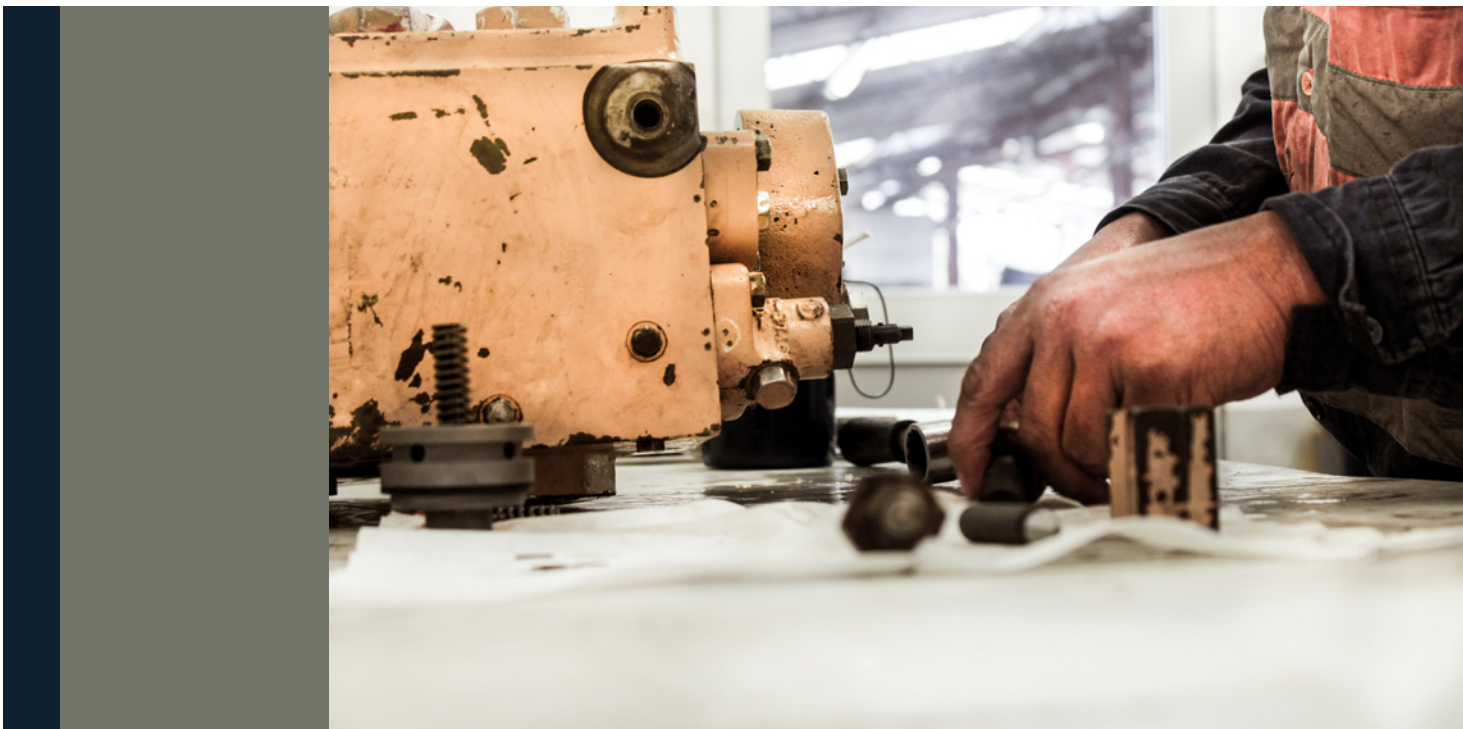
TRADE SERVICE CONTRACTING

Whether on your site through our field service team or in our workshop, SMW Group's 400-strong local trade workforce can deliver:

- Turn-key civil projects
- Electrical maintenance, including testing and tagging
- New electrical installations and alterations
- Hydraulic servicing and repairs
- Heavy machinery repairs, refurbishment and construction
- Planning of maintenance and routine repairs

Our strong local subcontractor network means that SMW Group can deliver full civil construction projects, including earthworks, concreting, and any specialist trade fit-out and commissioning.

While our trade workforce covers the essentials and are available 24/7 for emergency breakdown and repairs, our project management team can work with you to deliver a full solution anywhere in Central Queensland.





Fabrication, Manufacturing & Repairs

ABRASIVE BLASTING & PAINTING

SMW's workshop and fabrication facility is supported by a 1,100m² abrasive blasting and painting workshop, able to finish jobs to individual client paint specifications.

An accredited paint inspector supports our facility, integrating full quality assurance systems to ensure our blasting and painting jobs meet client's specification requirements and exceed recommissioning standards.

Our fully undercover facility ensures that weather delays do not impede progress.



FEATURED PROJECT

Aurizon Rail Wagon Repairs

As Rockhampton's rail workshop was closed in 2018, Aurizon no longer has local wagon and asset repair capacity. Building on existing local presence and partnerships, SMW stepped into the gap and is currently completing a series of overhauls on accident-damaged rail wagons from their Parkhurst workshop.

THE OVERHAUL SCOPE INCLUDES:

- Individual assessment of cracks, damages and structural weakness
- In-house fabrication and repair
- Manufacturing of replacement components, including wagon doors
- Repair to recommissioning standard

SMW's unique local capability and engineering-led approach has resulted in several innovations across the fleet repair and overhaul, including the use of our proprietary Ultralift crane technology, reducing overheads and the cost to our client. SMW Group are also making use of our robotic welding capabilities to ensure quality and speed are a priority.

A vertical photograph on the left side of the page shows a man in a workshop. He is wearing a dark cap, safety glasses, and an orange high-visibility vest over a blue shirt. He is focused on working on a piece of machinery, with his hands near a yellow component. The background is slightly blurred, showing other parts of the workshop.

Mechanical & Compliance Services

VEHICLE MAINTENANCE, COMPLIANCE & REPAIR

SMW Group's Mechanical workshop is equipped to carry out maintenance, repairs, overhauls and compliance checks on all industrial and earthmoving equipment, medium and light vehicles and ancillary equipment including pumps, lighting, plant and service vehicles.

We provide roadworthy certificates for light, medium and heavy vehicles, either at our workshop facility or through our convenient mobile roadworthy station. Routine vehicle servicing and breakdown maintenance are also part of the SMW Group service – you can trust us to keep your fleet running.

Mechanical services provided by SMW Group include:

- Medium and light vehicle service and repair
- Roadworthy inspections for any vehicle, from light to heavy
- Supply and installation of all parts and components required for compliance checks and certifications
- Truck and trailer wheel alignment
- Certified brake tests on all vehicles
- Heavy Combination and highway servicing
- Allison transmission servicing and repair
- Electrical and auto electrical preventative maintenance and statutory checks
- Reactive/breakdown maintenance
- Electrical services and maintenance on heavy machinery
- Medium to light vehicle and heavy machinery air-conditioning



Mechanical & Compliance Services

HYDRAULICS

SMW Group's hydraulics team are experienced in systems design, installation, manufacture and commissioning, for all heavy industrial hydraulics. At our Parkhurst facility, we have the largest CNC Cylinder Hone in Central Queensland, with a 4.1m cylinder capacity.

SMW Group's hydraulic capabilities include:

- Hydraulic design, manufacture and installation
- Hydraulic & Pneumatic cylinder reconditioning
- Piston, gear, vane pump and motor rebuild and testing
- Valve rebuild and testing
- Design and manufacture of specialist equipment

CRANE SERVICES

SMW Group are the authorised Hiab dealers for Central Queensland. In addition to this, we offer certification, inspection and repair of vehicle loading cranes and elevated work platforms from our Parkhurst facility. For safe load handling solutions with any heavy industrial application, SMW Group has the expertise and the equipment to get the job done.



Innovation & Automation

Our industry-leading innovation and automation approach to projects means that when you work with SMW Group, you are partnering with a leader in technology.

SMW Group continually invests in state-of-the-art equipment to support our aim of being faster, smarter and more efficient.

AUTOMATED PLASMA CUTTER AND WELDER (PCAW) ROBOT

SMW Group's award-winning 'welding robot' is a complete robotic solution for heavy industry fabrication and manufacturing needs. This robot can complete basic welds with an average 60% cost reduction and 47% time saving.

The system also has real time quality control reporting systems like no other. The PCAW Robot is most often used in heavy fabrication and manufacturing projects, including dragline, shovel and excavator bucket repairs, rebuilds and new fabrications.

We take an innovation-first approach to every project, recognised as the Queensland Mining Contractor of the Year in 2014, and winning the Queensland Mining Awards Innovation prize in 2016.





Clients

SMW Group has completed projects for a range of industry, transport and corporate clients.

Minerals/Quarries

- Earth Commodities
- Sibelco
- Downer Blasting Services (Bajool)

Mining

- BHP Billiton
- Wesfarmers Curragh
- Coronado Global
- Anglo American
- Yancoal Australia
- Thiess
- Golding Contractors
- Adani Mining
- Glencore
- Jellinbah Group
- QCoal
- Peabody Energy
- Batchfire Callide
- Sojitz Coal
- Stanmore Coal
- Downer Mining

Heavy Industry

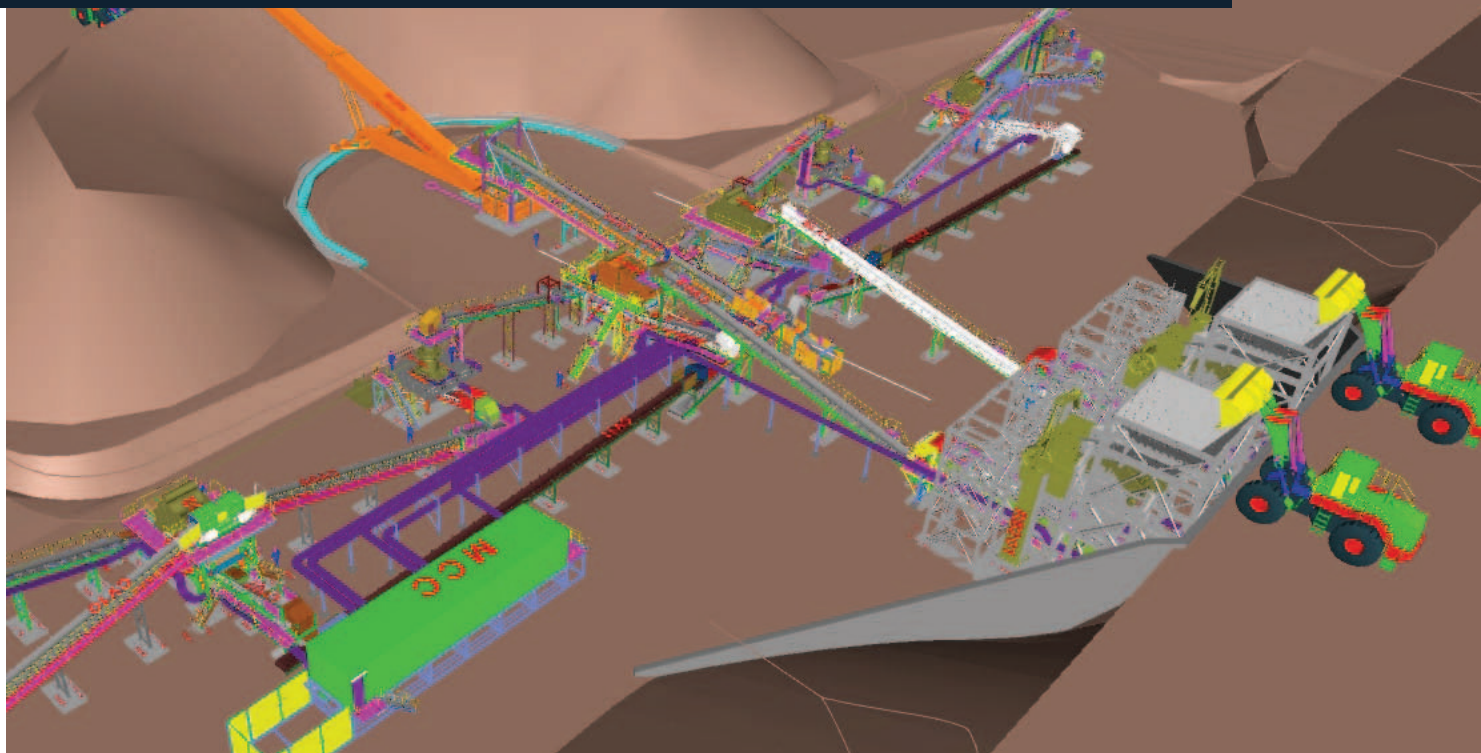
- Ergon
- Hastings Deering

Transport

- Aurizon
- Austrak
- Fitzroy Towing
- Linfox
- Armaguard

Commercial

- Surf Lakes
- Bidvest
- Coles
- Woolworths
- JJ Richards
- Rockhampton Regional Council



FEATURED PROJECT

MATERIALS PROCESSING PLANT FABRICATION

SMW project managed, manufactured in-house and delivered:

- 20 conveyors, with a combined length of 450 metres.
- 4 x Screening structures to support 2.4m x 6.5m screens
- 4 x crushing structures to support 1.5m diameter cone crushers
- 1 kilometre of handrails on access platforms

The resulting processing plant is capable of 1500 -1700 tonnes of crushed ore produced per hour at peak operation. The plant took 15,000 man-hours to manufacture and assemble, with 70 trailers required to carry the components the 4,500 kilometres from SMW Group's workshop to the Western Australian client's site.

Given their innovative approach to projects of this nature, SMW Group were able to project manage, fabricate and transport an entire solution from their base in Central Queensland to the Pilbara – more competitively than other suppliers.

The processing solution, designed as a pilot plant, was entirely manufactured in-house by SMW Group, using our extensive storage space, undercover workshop and team of expert boilermakers.

This processing plant was destined for North-Western Australia's Pilbara. SMW Group were chosen from a panel of suppliers (including Western Australian companies) and came out on top for service, efficiency and skill.



HSEQ

SAFETY, TRAINING AND THE ENVIRONMENT:

we commit to high standards for our team and yours.

COMMUNITY

SMW Group are proud Central Queenslanders and take great pride in supporting our community and staff. We assist a range of community groups and events through sponsorships and financial contributions.

We recognise the importance of building strong foundations for social responsibility and do so through a number of initiatives, including:

- Central Queensland Capras
- Rockhampton Rugby League Referees
- Rockhampton Miss Showgirl
- Central Rodeo Cowboys Association (CRCA) Rodeos
- Australian Enduro Motocross
- Moura State School P&C Sportsmens' Dinner
- CFMEU Moura Charity Golf Day
- Yeppoon Surf Life Saving Club
- Blackwater Crushers
- Central Highlands Multicultural Rugby League
- Rockhampton Bluebirds United Softball
- Moranbah Netball Association
- West Tigers Mackay RLC
- Yeppoon Swans AFL
- Capricorn Dirt Riders Enduro Club
- Broadmeadows Clay Target Club
- The Caves P&C
- The Caves Rodeo
- The Caves Show
- Oceania Hockey Federation

HEALTH AND SAFETY

SMW Group is dedicated to the safety and wellbeing of our team and yours. Our safety policies and procedures are accredited to AS/NZS4801 and ISO45001:2018. SMW Group also complies with the provisions of the Workplace Health and Safety Act 2011 and its associated Regulations, Codes of Practice and Australian Standards.

SMW Group aims to achieve zero workplace incidents and accidents at all our operations and as such we place the safety of employees, contractors, and the public as our first priority.

In order for SMW Group to provide a healthy work environment, the Rockhampton facilities and all field service vehicles are considered to be non-smoking areas. This is to ensure the comfort, safety and rights of all people, particularly those who may be at risk of exposure to the hazards of passive smoking.

SMW Group will work with clients to ensure any of your project-specific requirements are incorporated into our procedures where necessary.



HSEQ

Environment

SMW is conscious of the effect our operations could have on the environment. It is our policy to achieve the highest practical standard of environmental care in all of our activities as an organisation. SMW Group will achieve this objective by applying the principles of ecologically sustainable development.

Quality

SMW Group aims to provide an excellent standard of engineering and to ensure that our services both meet client needs and stand the test of time. Our goal is to deliver our services at the required quality and cost in a safe manner with due regard to client concerns and needs. Our Quality Management System, accredited to ISO9001:2015, will ensure that our operations are conducted in a manner that ensures quality and consistency with SMW's requirements.

Training

As a major employer of trade apprentices, SMW Group understands the importance of creating and maintaining a safe and healthy working environment. All employees are accountable for the health and safety of fellow employees and visitors.

Our mandatory Online Induction process ensures that all employees and subcontractors are fully aware of and compliant with SMW Group's Zero Harm philosophies and all relevant policies and procedures, before ever stepping foot on a job site.

Our goal is to actively reduce the risk of injury to employees, contractors, and visitors by focusing on the areas of hazard/risk management, injury prevention strategies, and continuous improvement in Workplace Health and Safety.

As a listed company (NZX:SMW), SMW Group operates to the highest standards of policy and governance.

smwgroup

engineering continuous improvement

1300 SMW GROUP

www.smwgroup.com.au

