

VOTE 2022

BOTTOMS UP
MARICOPA COUNTY DEMOCRATIC PARTY

CHANGE STARTS AT THE BOTTOM OF THE BALLOT

Democrats believe the economy should work for everyone, education and healthcare are a right, and our freedom depends on our right to vote. Electing Democrats to all levels of government, from school board to United States Senate, is the path toward a brighter, more equal future for all Arizonans.

WHERE TO VOTE IN PERSON

To vote in person or drop off an early ballot, you can go to ANY Vote Center across Maricopa County.

Find out where to vote in person or drop off your ballot at locations.maricopa.vote

HOW TO VOTE BY MAIL

We recommend filling out your early ballot and sending it back immediately after receiving it.

Mail back your ballot by November 1st!

Your ballot must be received by 7 p.m. on Election Day.

REGISTER TO VOTE:

OCT. 11TH

Last day to register to vote

EARLY VOTING:

OCT. 12TH

Early voting begins

ELECTION DAY:

NOV. 8TH

Polls are open from 6 a.m. to 7 p.m.

STEP ONE

Fill in the bubble next to your candidate with a black ballpoint pen.



STEP TWO

Sign, date, and write your phone number on the green envelope.



STEP THREE

Fold ballot and insert into green, prepaid envelope.



STEP FOUR

Mail by November 1, or drop off at any Vote Center by November 8.

FOR MORE INFO ON VOTING & VOTER REGISTRATION

elections.maricopa.gov

PARA INFORMACIÓN EN ESPAÑOL

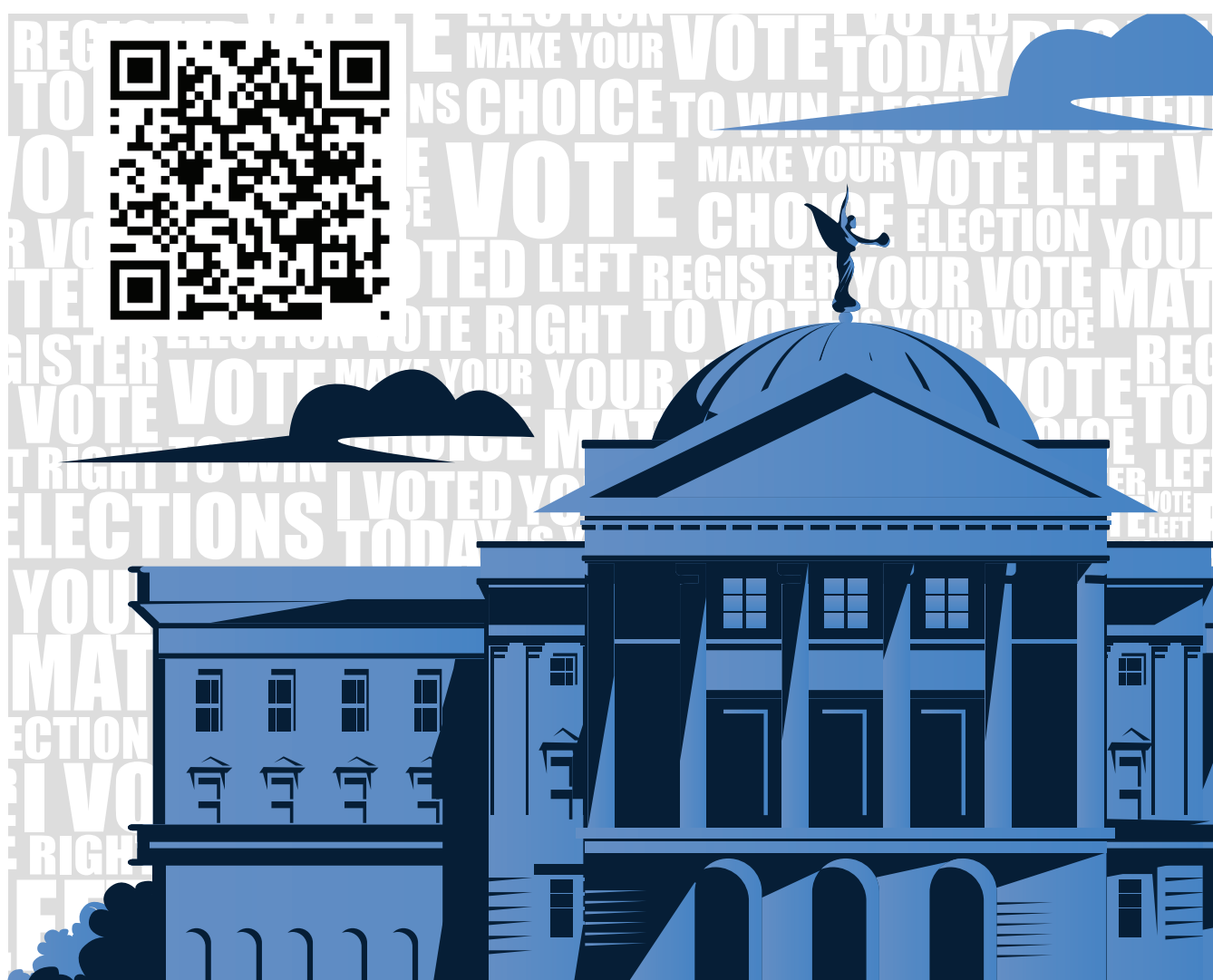
maricopadems.vote/LD5



FOLLOW US:
@MaricopaDems



Paid for by Maricopa County Democratic Party, Maricopa County Democratic Party PAC, Alexandra for Arizona, Graff for Arizona, Aguilar for AZ, Elect Pederson, and Kelli Butler for Arizona. Authorized by Alexandra Arboleda, Ben Graff, Ylenia Aguilar, Jim Pederson, and Kelli Butler.



VOTE

FOR OUR COUNTY, LOCAL, & STATEWIDE CANDIDATES

LEGISLATIVE DISTRICT 5



MARICOPA COUNTY

Maricopa County Attorney
Gunnigle, Julie

Maricopa County



School Board

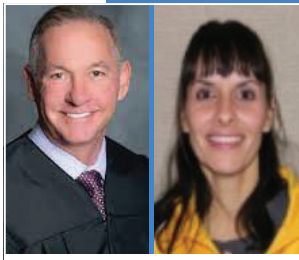
Washington Elementary School District
(Vote for ONLY)
Valenzuela, Tamillia
Clayton, Kyle



Arizona State

Secretary of State
Fontes, Adrian

You will have one of these districts on your ballot



Encanto District

Justice of the Peace
Chevront, Ken

Constable
Ligocki-Russell, Maria



School Board

Paradise Valley Unified School District
(Vote for ONLY)
Pantera, Tony
Baker, Kerry



Arizona State

Attorney General
Mayes, Kris



Downtown District

Justice of the Peace
Sama, Jennifer

Constable
Martinez, Darlene



School Board

Glendale Union High School
(Vote for ONLY)
Ulan, Paul
Kennedy, Patrice "Patty"



Arizona State

State Treasurer
Quezada, Martín



Maricopa County

Central Arizona Water Conservation District
(Vote for ONLY)
Arboleda, Alexandra
Aguilar, Ylenia
Graff, Ben
Pederson, Jim



Arizona State

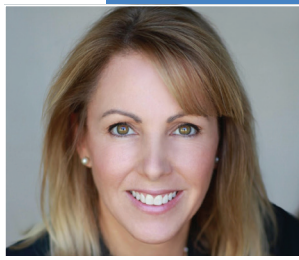
ARIZONA STATE

Governor
Hobbs, Katie



Arizona State

Superintendent of Public Instruction
Hoffman, Kathy



Maricopa County

Maricopa County Community College District At-Large Board Member
Butler, Kelli



Arizona State

State Senator
Alston, Lela



Arizona State

Corporation Commissioner
(Vote ONLY for these two candidates)
Kennedy, Sandra
Kuby, Lauren

You will have one or two of these school districts on your ballot



School Board

Madison Elementary School District
(Vote for ONLY)
Khazai, Mitra



Arizona State

State Representative
(Vote for BOTH)
Longdon, Jennifer
Shah, Amish

PROPOSITIONS

Vote YES!

Prop. 130

Constitutional property tax exemptions

Prop. 209

Interest rate limit on debt from healthcare services and collection exempt property and earnings increase initiative

Prop. 211

Campaign finance sources disclosure initiative

Prop. 308

In-State tuition for Dreamers

Prop. 310

Fire districts; funding; TPT increment

Vote NO!

Prop. 128

The Legislature will be able to change or supercede citizen initiative by simple majority vote

Prop. 129

Limits an initiative to one subject only

Prop. 132

Citizens Initiatives; 60% supermajority vote requirement

Prop. 309

Changes to Arizona's voter identification and mail-in ballot policies, requiring all mail-in ballots to include an affidavit with dates of birth and voter ID numbers