

# VOTE 2022



CHANGE STARTS  
AT THE BOTTOM  
OF THE BALLOT

Democrats believe the economy should work for everyone, education and healthcare are a right, and our freedom depends on our right to vote. Electing Democrats to all levels of government, from school board to United States Senate, is the path toward a brighter, more equal future for all Arizonans.

## WHERE TO VOTE IN PERSON

To vote in person or drop off an early ballot, you can go to ANY Vote Center across Maricopa County.

Find out where to vote in person or drop off your ballot at [locations.maricopa.vote](https://locations.maricopa.vote)

## HOW TO VOTE BY MAIL

We recommend filling out your early ballot and sending it back immediately after receiving it.

**Mail back your ballot by November 1st!**

**Your ballot must be received by 7 p.m. on Election Day.**

REGISTER TO VOTE:

OCT. 11<sup>TH</sup>  
Last day to register to vote

EARLY VOTING:

OCT. 12<sup>TH</sup>  
Early voting begins

ELECTION DAY:

NOV. 8<sup>TH</sup>  
Polls are open from 6 a.m. to 7 p.m.

### STEP ONE

Fill in the bubble next to your candidate with a black ballpoint pen.



### STEP TWO

Sign, date, and write your phone number on the green envelope.



### STEP THREE

Fold ballot and insert into green, prepaid envelope.



### STEP FOUR

Mail by November 1, or drop off at any Vote Center by November 8.

## FOR MORE INFO ON VOTING & VOTER REGISTRATION

[elections.maricopa.gov](https://elections.maricopa.gov)

PARA INFORMACIÓN  
EN ESPAÑOL

[maricopadems.vote/LD11](https://maricopadems.vote/LD11)



FOLLOW US:  
@MaricopaDems



Paid for by Maricopa County Democratic Party, Maricopa County Democratic Party PAC, Alexandra for Arizona, Graff for Arizona, Aguilar for AZ, Elect Pederson, and Kelli Butler for Arizona. Authorized by Alexandra Arboleda, Ben Graff, Ylenia Aguilar, Jim Pederson, and Kelli Butler.



# VOTE

# FOR OUR COUNTY, LOCAL, & STATEWIDE CANDIDATES

## LEGISLATIVE DISTRICT 11



Maricopa County

### MARICOPA COUNTY

Maricopa County Attorney  
**Gunnigle, Julie**



School Board

Laveen Elementary School District  
(Vote for ONLY)

**Rand, Simir  
Ward, Fern**



Arizona State

Secretary of State  
**Fontes, Adrian**

You will have one of these districts on your ballot



Downtown District

Justice of the Peace  
**Sama, Jennifer**

Constable  
**Martinez, Darlene**



School Board

Kyrene Elementary School District  
(Vote for ONLY)

**Nelson, Triné  
Walsh, Kevin**



Arizona State

Attorney General  
**Mayes, Kris**



Kyrene District

Justice of the Peace  
**Sauls, Sharron**

Constable  
**Bellavigna, Bridget**



School Board

Phoenix Union High School District Ward 2

**Oliver, Signa**



Arizona State

State Treasurer  
**Quezada, Martín**



South Mountain District

Justice of the Peace  
**Rios, Rebecca**

Constable  
**Kennedy, Mahogany**



School Board

Tempe Elementary School District  
(Vote for ONLY)

**Winsor, Charlotte**



Arizona State

Superintendent of Public Instruction  
**Hoffman, Kathy**



No Photo Available

West McDowell District

Justice of the Peace  
**Lopez, Teresa**

Constable  
**Rhymes, Byron L.**



Arizona State

### ARIZONA STATE

Governor  
**Hobbs, Katie**



Arizona State

Corporation Commissioner  
(Vote ONLY for these two candidates)  
**Kennedy, Sandra  
Kuby, Lauren**



Maricopa County

Central Arizona Water Conservation District  
(Vote for ONLY)

**Arboleda, Alexandra  
Aguilar, Ylenia  
Graff, Ben  
Pederson, Jim**



Arizona State

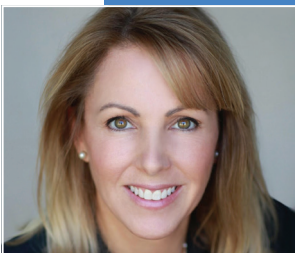
State Senator  
**Miranda, Catherine**



Arizona State

State Representative  
(Vote for BOTH)

**De Los Santos, Oscar  
Quiñonez, Marcelino**



Maricopa County

Maricopa County Community College District At-Large Board Member

**Butler, Kelli**

You will have one or two of these school districts on your ballot



School Board

Roosevelt Elementary School District  
(Vote for ONLY)

**Hodge, Ashley  
Frankiewicz, Megan**

### PROPOSITIONS

#### Vote YES!

##### Prop. 130

Constitutional property tax exemptions

##### Prop. 209

Interest rate limit on debt from healthcare services and collection exempt property and earnings increase initiative

##### Prop. 211

Campaign finance sources disclosure initiative

##### Prop. 308

In-State tuition for Dreamers

##### Prop. 310

Fire districts; funding; TPT increment

#### Vote NO!

##### Prop. 128

The Legislature will be able to change or supercede citizen initiative by simple majority vote

##### Prop. 129

Limits an initiative to one subject only

##### Prop. 132

Citizens Initiatives; 60% supermajority vote requirement

##### Prop. 309

Changes to Arizona's voter identification and mail-in ballot policies, requiring all mail-in ballots to include an affidavit with dates of birth and voter ID numbers