

VOTE 2022



CHANGE STARTS AT THE BOTTOM OF THE BALLOT

Democrats believe the economy should work for everyone, education and healthcare are a right, and our freedom depends on our right to vote. Electing Democrats to all levels of government, from school board to United States Senate, is the path toward a brighter, more equal future for all Arizonans.

REGISTER TO VOTE:

OCT. **11**TH

Last day to register to vote

EARLY VOTING:

OCT. **12**TH

Early voting begins

ELECTION DAY:

NOV. **8**TH

Polls are open from 6 a.m. to 7 p.m.

WHERE TO VOTE IN PERSON

To vote in person or drop off an early ballot, you can go to ANY Vote Center across Maricopa County.

Find out where to vote in person or drop off your ballot at locations.maricopa.vote

HOW TO VOTE BY MAIL

We recommend filling out your early ballot and sending it back immediately after receiving it.

Mail back your ballot by November 1st!

Your ballot must be received by 7 p.m. on Election Day.

STEP ONE

Fill in the bubble next to your candidate with a black ballpoint pen.

STEP TWO

Sign, date, and write your phone number on the green envelope.

STEP THREE

Fold ballot and insert into green, prepaid envelope.

STEP FOUR

Mail by November 1, or drop off at any Vote Center by November 8.

FOR MORE INFO ON VOTING & VOTER REGISTRATION

elections.maricopa.gov

PARA INFORMACIÓN EN ESPAÑOL

maricopadems.vote/LD12



FOLLOW US: @MaricopaDems



Paid for by Maricopa County Democratic Party, Maricopa County Democratic Party PAC, Alexandra for Arizona, Graff for Arizona, Aguilar for AZ, Elect Pederson, and Kelli Butler for Arizona. Authorized by Alexandra Arboleda, Ben Graff, Ylenia Aguilar, Jim Pederson, and Kelli Butler.

VOTE

FOR OUR COUNTY, LOCAL, & STATEWIDE CANDIDATES

LEGISLATIVE DISTRICT 12



MARICOPA COUNTY

Maricopa County Attorney
Gunnigle, Julie

Maricopa County

You will have one or two of these school districts on your ballot



Tempe Elementary School District
(Vote for ONLY)

Winsor, Charlotte

School Board



Arizona State

Secretary of State
Fontes, Adrian

You will have one of these precincts on your ballot



Justice of the Peace
Sauls, Sharron

Constable
Bellavigna, Bridget

Kyrene Precinct



Kyrene Elementary School District
(Vote for BOTH)

**Nelson, Triné
Walsh, Kevin**

School Board



Arizona State

Attorney General
Mayes, Kris



Justice of the Peace
Kissell, Tyler

Constable
Lathan, Karyn

University Lakes Precinct



Mesa Unified School District
(Vote for BOTH)

**Hutchinson, Marcie
Martinez, Jacob**

School Board



Arizona State

State Treasurer
Quezada, Martín



Justice of the Peace
Jermaine, Jennifer

San Marcos Precinct



Chandler Unified School District
(Vote for BOTH)

**Serrano, Martha "Patti"
Estes, Marilou**

School Board



Arizona State

Superintendent of Public Instruction
Hoffman, Kathy



Central Arizona Water Conservation District
(Vote for FOUR)

**Arboleda, Alexandra
Aguilar, Ylenia
Graff, Ben
Pederson, Jim**

Maricopa County



Arizona State

ARIZONA STATE

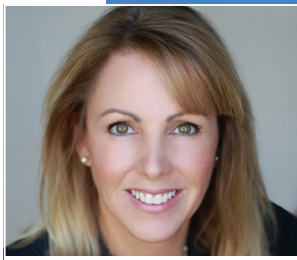
Governor
Hobbs, Katie



Arizona State

Corporation Commissioner
(Vote for BOTH)

**Kennedy, Sandra
Kuby, Lauren**



Maricopa County Community College District At-Large Board Member

Butler, Kelli

Maricopa County



Arizona State

State Senator
Epstein, Denise "Mitzi"



EVIT- District 5
Metcalfe-Schaffer, Laura

School Board



Arizona State

State Representative
(Vote for BOTH)

**Contreras, Patricia "Patty"
Travers, Anastasia "Stacey"**

PROPOSITIONS

Vote YES!

Prop. 130

Constitutional property tax exemptions

Prop. 209

Interest rate limit on debt from healthcare services and collection exempt property and earnings increase initiative

Prop. 211

Campaign finance sources disclosure initiative

Prop. 308

In-State tuition for Dreamers

Prop. 310

Fire districts; funding; TPT increment

Vote NO!

Prop. 128

The Legislature will be able to change or supercede citizen initiative by simple majority vote

Prop. 129

Limits an initiative to one subject only

Prop. 132

Citizens Initiatives; 60% supermajority vote requirement

Prop. 309

Changes to Arizona's voter identification and mail-in ballot policies, requiring all mail-in ballots to include an affidavit with dates of birth and voter ID numbers