



morrisroegroup



gsspiling 

SUPER KITTEN

Speak to our trusted specialist team for more information on the Super Kitten and if its the right rig for your project. All dimensions subject to configuration



SUPER KITTEN

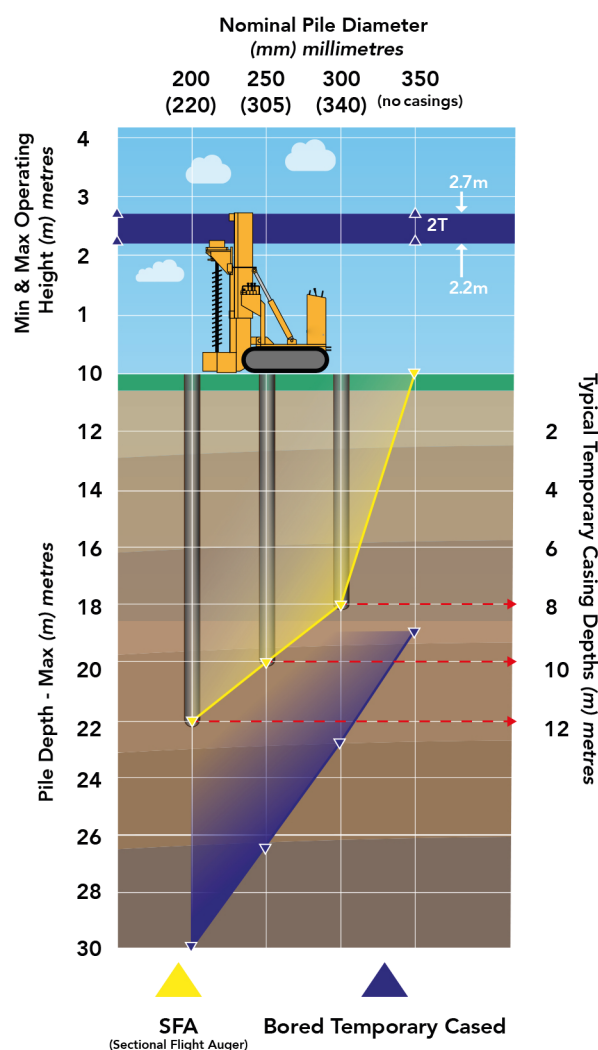
TECHNICAL CAPABILITIES



Super Kitten	
Weight	1900 kg
Nominal ground bearing pressure under tracks	47.5 kPa
Max ground bearing pressure under foot at max tear-out	400 kPa
Tractive effort	4300 N
Travelling speed	0.65 m/sec
Rotary Head Torque Output	11,000Nm
Crowd force	15 kN
Retract force (Tear-out)	40 kN
Feed speed	6 m/min
Feed length	1400 mm
Clamp force	75 kN
Clamp maximum diameter	305 mm or 355 mm

Power Pack	60 HP
Weight	wheel 1100kg/1950kg tracked
Engine	Hatz 60 HP Silent Pack
Hydraulic Pump	Rexroth A10VO H.P. controlled
Maximum System Pressure	240 bar
Maximum flow rate	175 ltr/min
Control System	Danfoss load sense
Hydraulic oil tank capacity	250ltr
Fuel tank capacity	125ltr

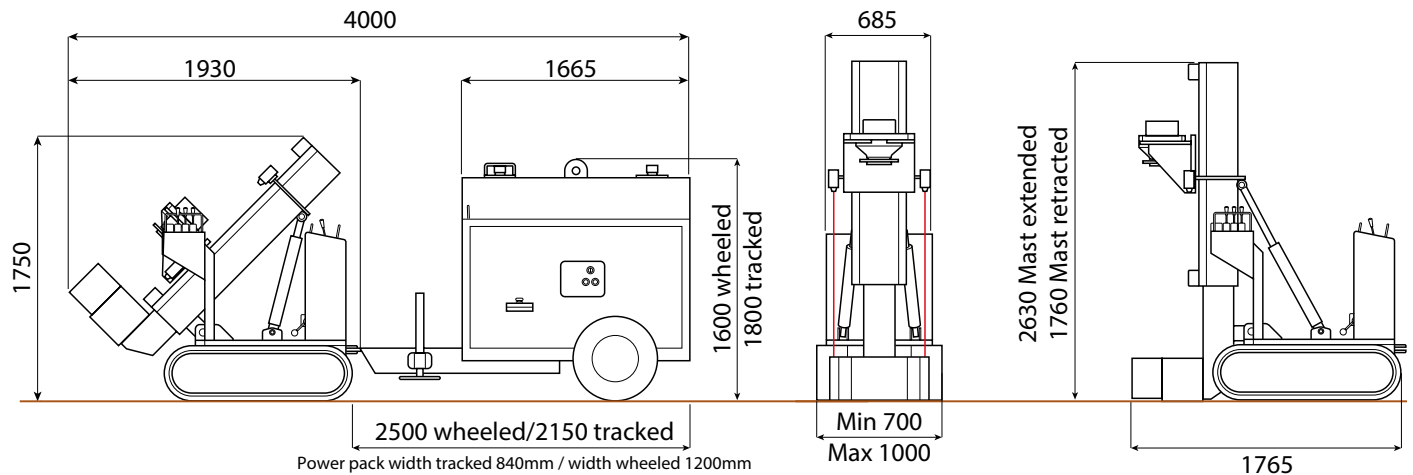
Noise	Sound level dB(A)	
	Idle	Max Rev
2m	78	86
4m	75	84
10m	72	78



The performance and depth limitations is clearly subject to the ground conditions encountered, please contact for site specific detail.

Complete Machine

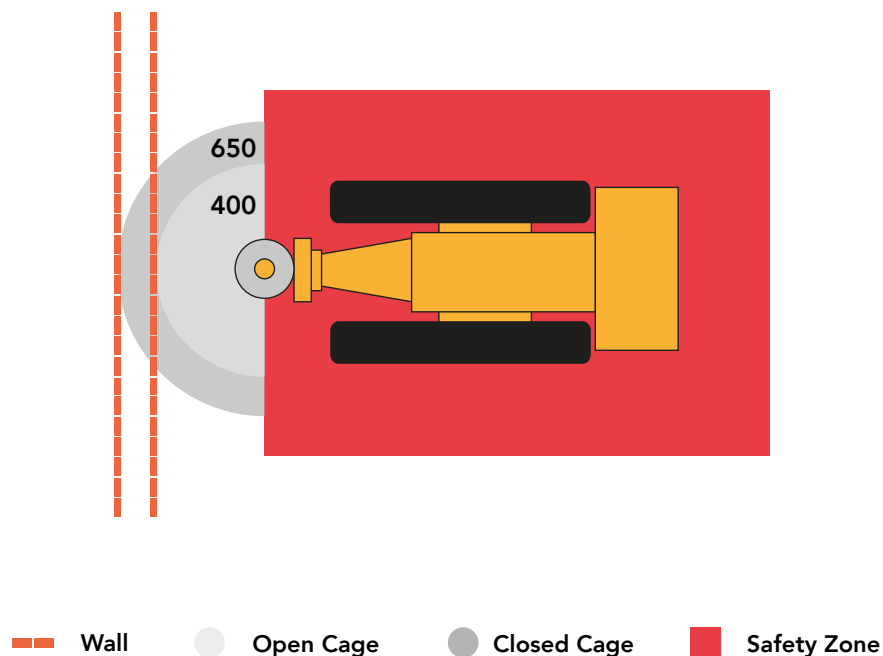
Kitten Rig



The power pack can be located typically 25m from the rig, this can be extended up to 50m (power losses will be experienced from the rig at 50m).

Typical Rig Operating Distances

Minimum distance from face of wall to centre of pile:



Much tighter tolerances can be achieved than indicated above, as tight as 100mm from the face of a pile to an existing wall subject to access and piling rig orientation. Please call us for job specific requirements.

gsspiling ltd 

tel: +44(0)1707260022

info@gss-morrisroe.co.uk

geostructural solutions 

gsspiling 

morrisroe piling 