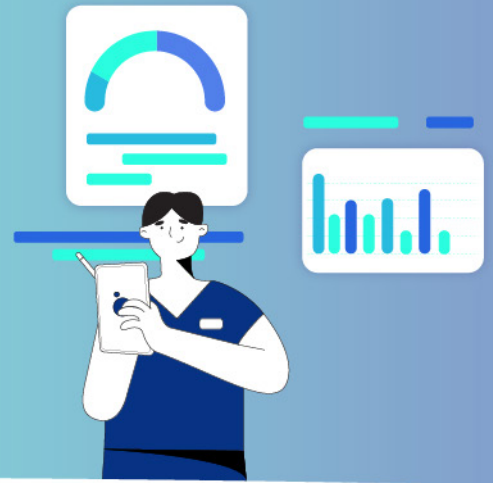


Integrated Care Services (ICS)



Our **Integrated Care Service** consultants are leading and innovative PACE experts, personally invested in the well-being of dual eligible and special needs individuals. We share a vision with PACE to improve clinical outcomes through data and grow the model of care across the country.

Our approach:

We assist PACE programs in four key areas of operation: **Compliance, Utilization, Quality, and Operations**. Our experts work alongside PACE Programs and staff to execute project work plans aimed at improving participant and organizational outcomes.

How we help:

1 Compliance Management

Our team advises and executes on compliance program development to align your program with PACE compliance oversight requirements and best practices for operating an effective compliance program. We will assist in risk assessments, [Mock Audits](#), road mapping, execution remediations, and more.

2 Utilization Management

Through our data-driven approach, we offer programs the ability to see utilization trends and opportunities, review them with your clinical team, and methodically advise on how to build lasting processes to improve utilization outcomes. Our approach is to ensure access to necessary and quality care while reducing unnecessary and unwanted utilization.

3 Quality Management

Our team provides expertise on all aspects of the quality process from Annual Work Plans to Quality Program Development. We roadmap plans to improve quality through a data-driven and root-cause-analysis approach.

4 PACE Education & Management Support

With high staff turnover and a unique model of care, we train leadership on processes proven to be successful in PACE. This education includes quality approaches, IDT operations, falls management, service area applications, and growth strategies.

Contact us today and let's talk about what Intus Care can do for your organization.

Email: Info@Intus.care | **Phone:** 401.490.8640



Contact us for pricing.

Additional ancillary services such as customized success plans for our software product (data engine) and ad hoc reporting are available.