





## ➤ LACK OF ACCURATE INFRASTRUCTURE DATA COSTS:



**TIME**



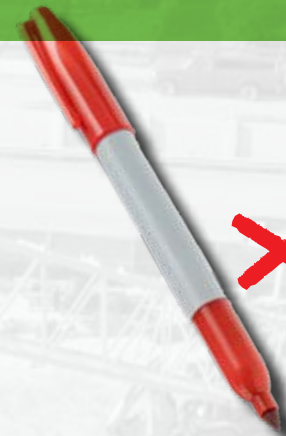
**BUDGET**



**SAFETY**



**REPUTATION**



**CHANGE ORDERS/  
REWORKS**



**INACCURATE  
DATA**



**DOWNTIME &  
COST OVERRUNS**



**PROPERTY  
DAMAGES**





# CONTROL DATA > CONTROL DAMAGE

**SITEMAP® PROJECT PUTS YOU IN CONTROL BY SECURING YOUR LAYERED AND MAPPED SUBSURFACE AS-BUILT DATA IN ONE SINGLE SOURCE OF TRUTH FOR THE LIFE OF YOUR CONSTRUCTION PROJECT: ACCESSIBLE & SHAREABLE, 24/7.**

## **GAIN CONTROL**

- Create a single source of truth for everyone on your team for the duration of your project

## **STREAMLINE COMMUNICATIONS**

- Strip away confusion by reinforcing individual and team objectives with customized communications

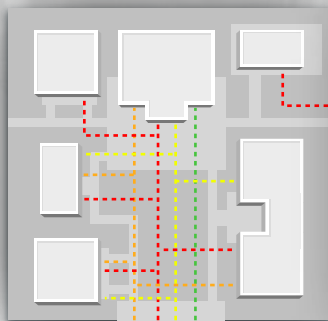
## **ENSURE ACCURACY**

- **You can't afford sub-par locates and neither can we.** That's why SiteMap® Project is powered by GPRS' 99.8%+ accurate utility locates & concrete scans and 2-4mm accurate 3D laser scans – to make sure you get the best quality information, efficiently delivered





## AS-BUILT VS AS-INTENDED DRAWINGS



~~AS-BUILT  
AS-INTENDED~~



GPRS  
AS-BUILT

**Your as-builts are only as good as the information they're built on.** That's why your GPRS Project Manager is not a technician, they are an expert consultant, certified in Subsurface Investigation Methodology, utilizing multiple technologies to provide you with the most accurate locates, maps, and measurements in the industry.

SiteMap® Project & GPRS bridge the gap between outdated record drawings and real-time reality capture with 2D CAD drawings, 3D WalkThru tours, and can even give you an integrated digital twin that combines your entire jobsite, above and below ground – so that every member of your team has the same information – whether they're on site, or across the country.

## THE GPRS DIFFERENCE



IN PURSUIT OF **100%**  
**SUBSURFACE  
DAMAGE  
PREVENTION**



**SITEMAP®**  
PROJECT





ELECTRICIAN



PLUMBER



MECHANICAL



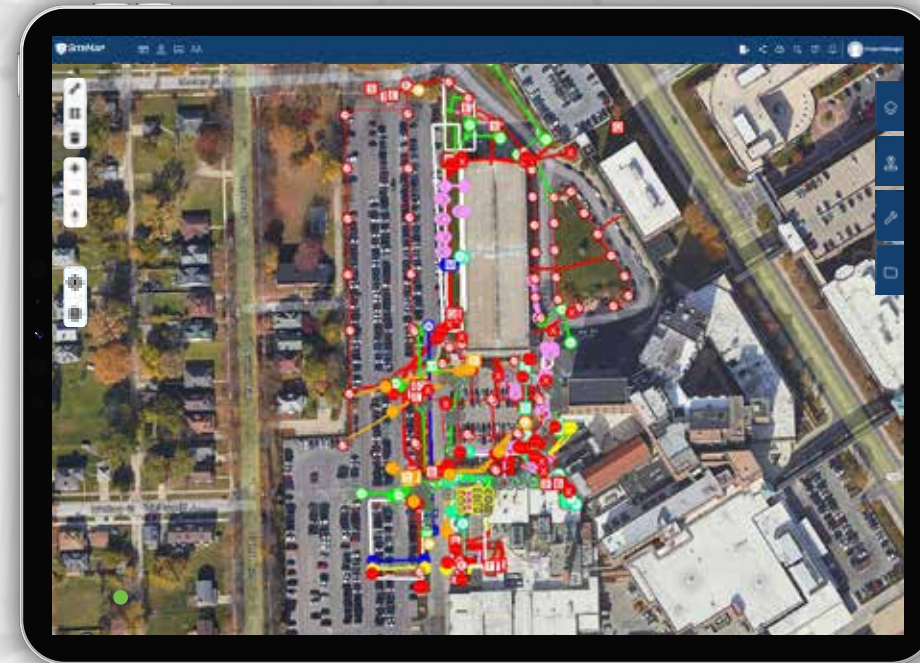
GENERAL CONTRACTOR



## NO MORE GUESSING. NO MORE BAD AS-BUILTS.

SiteMap® Project allows general contractors and their teams to prevent damages, capture accurate existing conditions, and plan more effectively.

You control the quality of your underground utility maps & as-builts because when you have SiteMap® Project, any sub or trade who orders a locate or measurement job is required to utilize GPRS' 99.8%+ accurate utility locates and concrete scans, and our 2-4mm accurate 3D laser measurements for the life of your project.

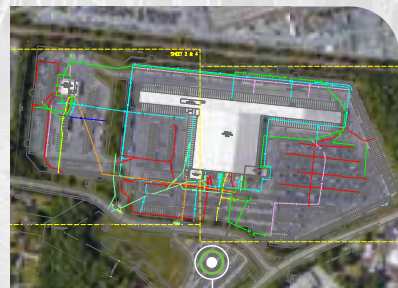






# SITEMAP<sup>®</sup> HELPS YOU MANAGE

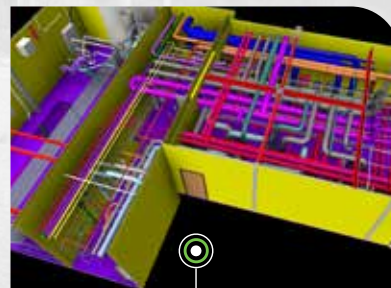
UTILITY LOCATING  
& MAPPING



VIDEO PIPE INSPECTION  
VIDEO AND REPORTS



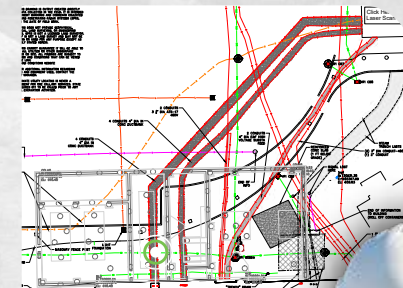
PHOTOGRAMMETRY &  
3D LASER IMAGERY



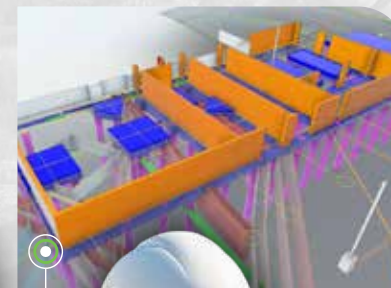
VIRTUAL  
TOURS



CAD



3D BIM  
MODELS

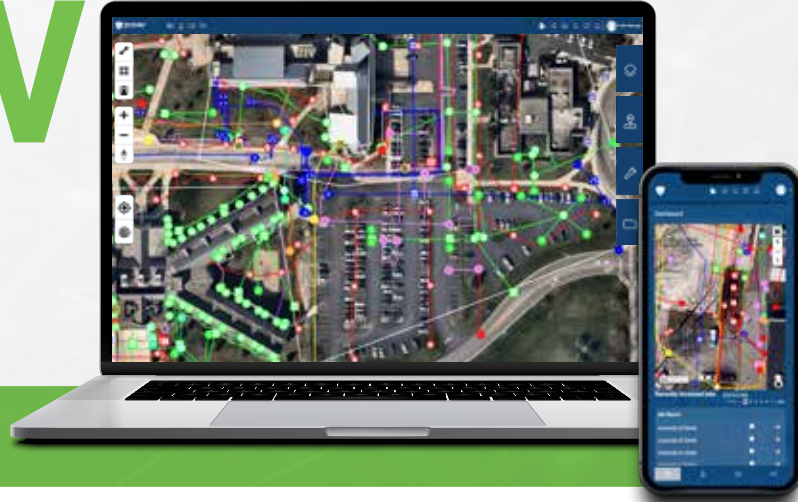




# GET STARTED NOW

Three chevron arrows pointing to the right, stacked horizontally. The first is green, and the second and third are blue.

SITEMAP.COM



SCAN THE QR CODE  
TO LEARN MORE

A green chevron arrow pointing to the right.