

TERMS AND CONDITIONS

1. THIS DRAWING IS INTENDED TO DOCUMENT MARKINGS AND COMMENTS COLLECTED BY GROUND PENETRATING RADAR SYSTEMS (GPRS). GPRS CANNOT GUARANTEE IT WILL BE ABLE TO LOCATE ALL UTILITIES OR OTHER SUBSURFACE FEATURES ON SITE. ALL FINDINGS ARE SUBJECT TO THE TERMS AND CONDITIONS THAT CAN BE VIEWED WITH THE LINK BELOW.
<https://m.gp-radar.com/terms-conditions>
2. GPRS DOES NOT PROVIDE GEOPHYSICAL, GEOLOGICAL, LAND SURVEYING, OR ENGINEERING SERVICES.
3. FOR ADDITIONAL INFORMATION REGARDING FINDINGS AND EQUIPMENT USED, SEE THE "JOB SUMMARY REPORT" THAT WAS SUBMITTED VIA EMAIL FOLLOWING COMPLETION OF FIELD WORK.
4. PRIVATE UTILITY LOCATING IS NEVER A REPLACEMENT FOR ONE CALL/911 SERVICES. STATE LAW REQUIRES 911 TO BE CALLED PRIOR TO ANY AND ALL EXCAVATION ACTIVITIES.

LEGEND

- SCAN AREA
 - COMMUNICATION
 - ELECTRICAL
 - GAS
 - SS SANITARY
 - ST STORM
 - WATER
 - COMM PEDESTAL
 - VALVE
 - COMM POLE
 - FIRE HYDRANT
 - ELEC BOX
 - WATER MANHOLE
 - ELEC METER
 - WATER VAULT
 - POWER POLE
 - GAS METER
 - LIGHT POLE
 - GAS RISER
 - TRANSFORMER
 - SANITARY MH
 - CATCH BASIN
 - END OF INFO
 - STORM MH
 - LINE CONTINUES
- D= DEPTH

0 25' 50' 100'



GPRS IS NOT AFFILIATED WITH 811 BUT DOES RECOMMEND THAT THE SERVICE IS USED ON EVERY PROJECT IN ADDITION TO OUR OWN. SEE NOTE #4 ABOVE.

FOR INFORMATION ONLY

GPRS UTILITY FINDINGS MAP

PREPARED FOR:

LOCATION:

DRAWN BY: JAKE STREACKER

PROJECT MANAGER:
JESSE HALVERSON
312.533.5797

JESSE.HALVERSON@GPRSINC.COM

DATE 6/2/2022

DRAWING NO. 1 REV. 0



TERMS AND CONDITIONS

1. THIS DRAWING IS INTENDED TO DOCUMENT MARKINGS AND COMMENTS COLLECTED BY GROUND PENETRATING RADAR SYSTEMS (GPRS). GPRS CANNOT GUARANTEE IT WILL BE ABLE TO LOCATE ALL UTILITIES OR OTHER SUBSURFACE FEATURES ON SITE. ALL FINDINGS ARE SUBJECT TO THE TERMS AND CONDITIONS THAT CAN BE VIEWED WITH THE LINK BELOW:

<https://m.gp-radar.com/terms-conditions>

2. GPRS DOES NOT PROVIDE GEOGRAPHICAL, GEOLOGICAL, LAND SURVEYING, OR ENGINEERING SERVICES.

3. FOR ADDITIONAL INFORMATION REGARDING FINDINGS AND EQUIPMENT USED, SEE THE "JOB SUMMARY REPORT" THAT WAS SUBMITTED VIA EMAIL FOLLOWING COMPLETION OF FIELD WORK.

4. PRIVATE UTILITY LOCATING IS NEVER A REPLACEMENT FOR ONE CALL/811 SERVICES. STATE LAW REQUIRES 811 TO BE CALLED PRIOR TO ANY AND ALL EXCAVATION ACTIVITIES.

LEGEND

	SCAN AREA		VALVE
	COMMUNICATION		FIRE HYDRANT
	ELECTRICAL		WATER MANHOLE
	GAS		WATER VAULT
	SANITARY		GAS METER
	STORM		GAS RISER
	WATER		SANITARY MH
	COMM PEDESTAL		CATCH BASIN
	ELEC BOX		END OF INFO
	ELEC METER		LINE CONTINUES
	POWER POLE		
	LIGHT POLE		
	TRANSFORMER		
	CATCH BASIN		
	STORM MH		
	D= DEPTH		

0 10' 20' 40'

811 Know what's below.
Call before you dig.

GPRS IS NOT AFFILIATED WITH 811 BUT DOES RECOMMEND THAT THE SERVICE IS USED ON EVERY PROJECT IN ADDITION TO OUR OWN. SEE NOTE #4 ABOVE.

FOR INFORMATION
ONLY

GPRS UTILITY
FINDINGS MAP

PREPARED FOR:

LOCATION:

DRAWN BY: JAKE STREACKER

PROJECT MANAGER:

JESSE HALVERSON

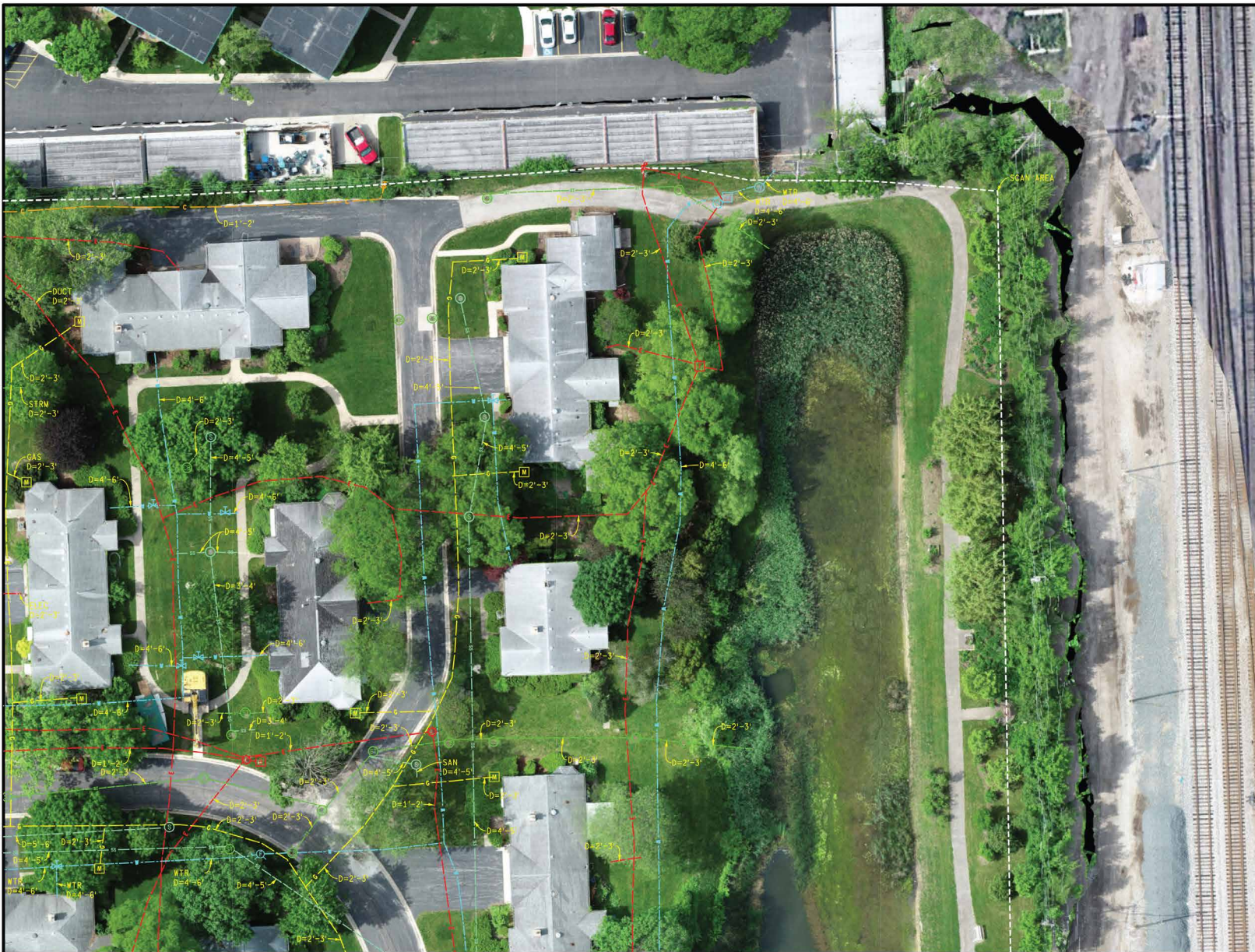
312.533.5797

JESSE.HALVERSON@GPRSSINC.COM

DATE 6/2/2022

DRAWING NO. 2 REV. 0

C:\USERS\JAKE STRECKER\ONEDRIVE - GPRS\PROJECTS\355469\CAD\VA355469_EX01 - GPRS - CAD1.DGN





TERMS AND CONDITIONS

1. THIS DRAWING IS INTENDED TO DOCUMENT MARKINGS AND COMMENTS COLLECTED BY GROUND PENETRATING RADAR SYSTEMS (GPRS). GPRS CANNOT GUARANTEE IT WILL BE ABLE TO LOCATE ALL UTILITIES OR OTHER SUBSURFACE FEATURES ON SITE. ALL FINDINGS ARE SUBJECT TO THE TERMS AND CONDITIONS THAT CAN BE VIEWED WITH THE LINK BELOW:
<https://m.gp-radar.com/terms-conditions>

2. GPRS DOES NOT PROVIDE GEOGRAPHICAL, GEOLOGICAL, LAND SURVEYING, OR ENGINEERING SERVICES.

3. FOR ADDITIONAL INFORMATION REGARDING FINDINGS AND EQUIPMENT USED, SEE THE JOB SUMMARY REPORT THAT WAS SUBMITTED VIA EMAIL FOLLOWING COMPLETION OF FIELD WORK.

4. PRIVATE UTILITY LOCATING IS NEVER A REPLACEMENT FOR ONE CALL/811 SERVICES. STATE LAW REQUIRES 811 TO BE CALLED PRIOR TO ANY AND ALL EXCAVATION ACTIVITIES.

LEGEND

	SCAN AREA		VALVE
	COMMUNICATION		FIRE HYDRANT
	ELECTRICAL		WATER MANHOLE
	GAS		WATER VAULT
	SANITARY		GAS METER
	STORM		GAS RISER
	WATER		SANITARY MH
	COMM PEDESTAL		END OF INFO
	COMM POLE		STORM MH
	ELEC BOX		LINE CONTINUES
	ELEC METER		
	POWER POLE		
	LIGHT POLE		
	TRANSFORMER		
	CATCH BASIN		
	STORM MH		

D= DEPTH

0 10' 20' 40'



811 Know what's below.
Call before you dig.

GPRS IS NOT AFFILIATED WITH 811 BUT DOES RECOMMEND THAT THE SERVICE IS USED ON EVERY PROJECT IN ADDITION TO OUR OWN. SEE NOTE #4 ABOVE.

FOR INFORMATION ONLY

GPRS UTILITY FINDINGS MAP

PREPARED FOR:

LOCATION:

DRAWN BY: JAKE STRECKER

PROJECT MANAGER:
JESSE HALVERSON
312.533.5797
JESSE.HALVERSON@GPRSINC.COM

DATE	6/2/2022
DRAWING NO.	3
REV.	0

C:\USERS\JAKE.STREACKER\ONEDRIVE - GPRS\PROJECTS\355469\CAD\VA355469_EX01 - GPRS - CAD1.DGN



TERMS AND CONDITIONS

1. THIS DRAWING IS INTENDED TO DOCUMENT MARKINGS AND COMMENTS COLLECTED BY GROUND PENETRATING RADAR SYSTEMS (GPRS). GPRS CANNOT GUARANTEE IT WILL BE ABLE TO LOCATE ALL UTILITIES OR OTHER SUBSURFACE FEATURES ON SITE. ALL FINDINGS ARE SUBJECT TO THE TERMS AND CONDITIONS THAT CAN BE VIEWED WITH THE LINK BELOW:
<https://m.gp-radar.com/terms-conditions>
2. GPRS DOES NOT PROVIDE GEOGRAPHICAL, GEOLOGICAL, LAND SURVEYING, OR ENGINEERING SERVICES.
3. FOR ADDITIONAL INFORMATION REGARDING FINDINGS AND EQUIPMENT USED, SEE THE JOB SUMMARY REPORT THAT WAS SUBMITTED VIA EMAIL FOLLOWING COMPLETION OF FIELD WORK.
4. PRIVATE UTILITY LOCATING IS NEVER A REPLACEMENT FOR ONE CALL/811 SERVICES. STATE LAW REQUIRES 811 TO BE CALLED PRIOR TO ANY AND ALL EXCAVATION ACTIVITIES.

LEGEND

- SCAN AREA
 - COMMUNICATION
 - ELECTRICAL
 - GAS
 - SANITARY
 - STORM
 - WATER
 - COMM PEDESTAL
 - COMM POLE
 - ELEC BOX
 - ELEC METER
 - POWER POLE
 - LIGHT POLE
 - TRANSFORMER
 - CATCH BASIN
 - STORM MH
 - VALVE
 - FIRE HYDRANT
 - WATER MANHOLE
 - WATER VAULT
 - GAS METER
 - GAS RISER
 - SANITARY MH
 - END OF INFO
 - LINE CONTINUES
- D= DEPTH

0 10' 20' 40'



Know what's below.
Call before you dig.

GPRS IS NOT AFFILIATED WITH 811 BUT DOES RECOMMEND THAT THE SERVICE IS USED ON EVERY PROJECT IN ADDITION TO OUR OWN. SEE NOTE #4 ABOVE.

FOR INFORMATION
ONLY

GPRS UTILITY
FINDINGS MAP

PREPARED FOR:

LOCATION:

DRAWN BY: JAKE STREACKER

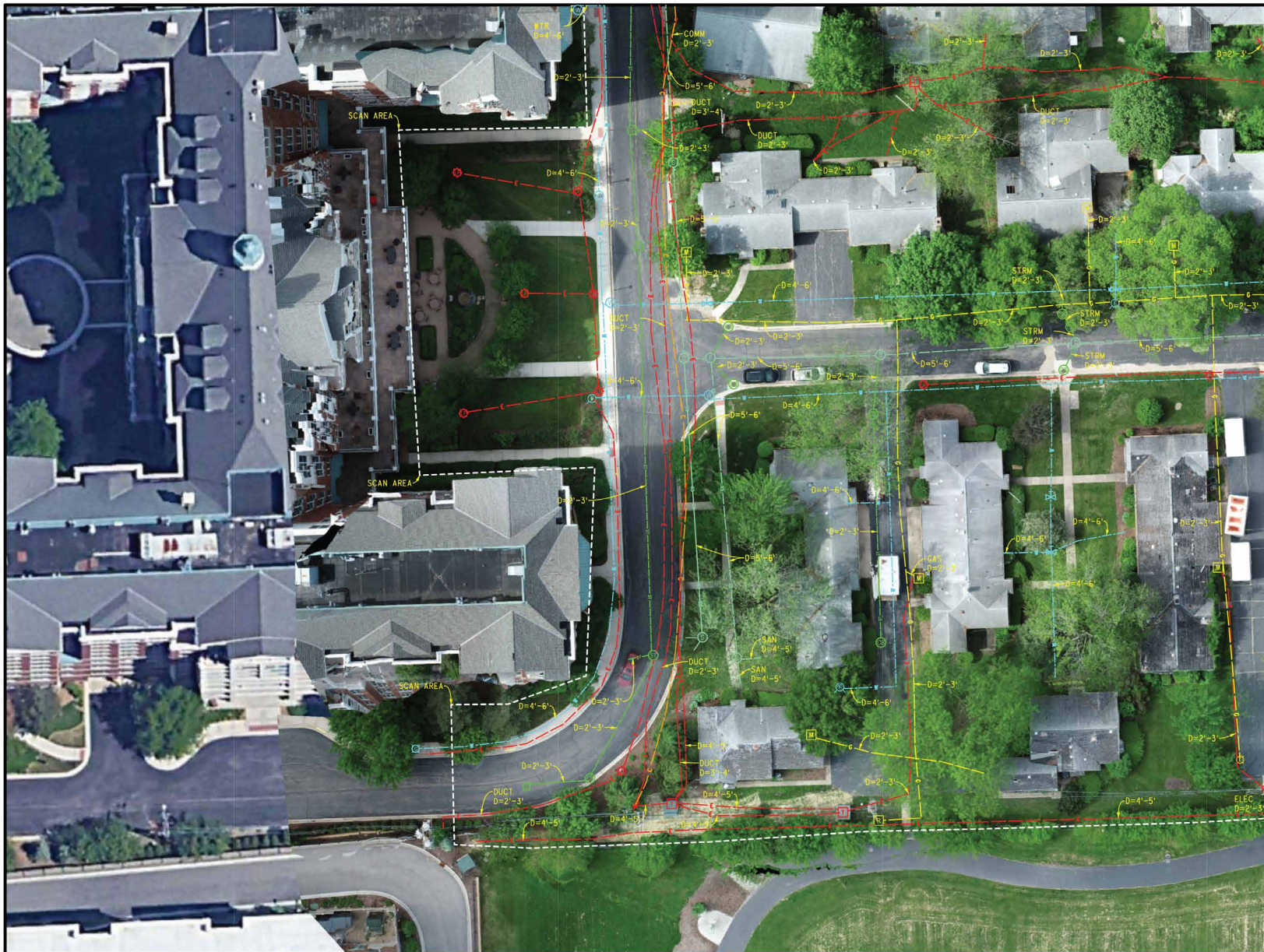
PROJECT MANAGER:
JESSE HALVERSON

312.533.5797
JESSE.HALVERSON@GPRSINC.COM

DATE 6/2/2022

DRAWING NO. 5 REV. 0

C:\USERS\JAKE.STREACKER\ONEDRIVE - GPRS\PROJECTS\355469\CAD\VA355469_EX01 - GPRS - CAD1.DGN



TERMS AND CONDITIONS

1. THIS DRAWING IS INTENDED TO DOCUMENT MARKINGS AND COMMENTS COLLECTED BY GROUND PENETRATING RADAR (GPRS). GPRS CANNOT GUARANTEE IT WILL BE ABLE TO LOCATE ALL UTILITIES OR OTHER SUBSURFACE FEATURES ON SITE. ALL FINDINGS ARE SUBJECT TO THE TERMS AND CONDITIONS THAT CAN BE VIEWED WITH THE LINK BELOW:
<https://m.gp-radar.com/terms-conditions>
2. GPRS DOES NOT PROVIDE GEOGRAPHICAL, GEOLOGICAL, LAND SURVEYING, OR ENGINEERING SERVICES.
3. FOR ADDITIONAL INFORMATION REGARDING FINDINGS AND EQUIPMENT USED, SEE THE JOB SUMMARY REPORT THAT WAS SUBMITTED VIA EMAIL FOLLOWING COMPLETION OF FIELD WORK.
4. PRIVATE UTILITY LOCATING IS NEVER A REPLACEMENT FOR ONE CALL/811 SERVICES. STATE LAW REQUIRES 811 TO BE CALLED PRIOR TO ANY AND ALL EXCAVATION ACTIVITIES.

LEGEND

- SCAN AREA
- COMMUNICATION
- ELECTRICAL
- GAS
- SS SANITARY
- ST STORM
- WATER
- COMM PEDESTAL
- COMM POLE
- ELEC BOX
- ELEC METER
- POWER POLE
- LIGHT POLE
- TRANSFORMER
- CATCH BASIN
- STORM MH
- D= DEPTH
- VALVE
- FIRE HYDRANT
- WATER MANHOLE
- WATER VAULT
- GAS METER
- GAS RISER
- SANITARY MH
- END OF INFO
- LINE CONTINUES

0 10' 20' 40'



Know what's below.
Call before you dig.

GPRS IS NOT AFFILIATED WITH 811 BUT DOES RECOMMEND THAT THE SERVICE IS USED ON EVERY PROJECT IN ADDITION TO OUR OWN. SEE NOTE #4 ABOVE.

FOR INFORMATION ONLY

GPRS UTILITY FINDINGS MAP

PREPARED FOR:

LOCATION:

DRAWN BY: JAKE STREACKER
PROJECT MANAGER:
JESSE HALVERSON
312.533.5797
JESSE.HALVERSON@GPRSINC.COM
DATE 6/2/2022
DRAWING NO. 4 REV. 0