



## Section Summary

3/3/2022

Number of sections	3
Total length of sewer network	566.75 ft
Inspected length of sewer network	566.75 ft
Not inspected length of sewer network	0.00 ft
Total abandoned inspections	1
Number of section inspection photos	25
Number of section inspection videos	3
Number of section inspection scans	0
Number of section inclination measurements	0

Pipe Segment Reference	Upstream MH	AB18047
City	Downstream MH	AA18013
Street	Shape	Circular 15inch
Total Length	Material	Not Known

	Distance	PACP Code	Observation
1	0.00	AMH	Manhole
2	0.00	MWL	Water Level, 20% of the vertical dimension
3	8.51	TFC	Tap Factory Made Capped at 2 o'clock, 4inch dim, within 8 inch
4	117.05	DNF	Deposits Ingress Fine, 5% of cross sectional area from 7 o'clock to 5 o'clock, within 8 inch
5	150.11	TFA	Tap Factory Made Active at 2 o'clock, 4inch dim, within 8 inch
6	167.27	DNF	Deposits Ingress Fine, 5% of cross sectional area from 7 o'clock to 5 o'clock, within 8 inch
7	185.43	DNF	Deposits Ingress Fine, 5% of cross sectional area from 7 o'clock to 5 o'clock, within 8 inch
8	205.22	DNF	Deposits Ingress Fine, 5% of cross sectional area from 7 o'clock to 5 o'clock, within 8 inch
9	246.34	AMH	Manhole

Pipe Segment Reference	Upstream MH	AA18018
City	Downstream MH	AA18020
Street	Shape	Circular 8inch
Total Length	Material	Vitrified Clay Pipe

	Distance	PACP Code	Observation
1	0.00	AMH	Manhole
2	0.00	MWL	Water Level, 10% of the vertical dimension
3	0.00	MMC	Material Change
4	18.50	FC	Fracture Circumferential from 10 o'clock to 4 o'clock, within 8 inch
5	18.75	ISZ	Intruding Sealing Other, 5% of cross sectional area from 12 o'clock to 2 o'clock
6	28.42	MWLS	Water Level, Sag in pipe, 10% of the vertical dimension
7	60.00	TFA	Tap Factory Made Active at 7 o'clock, 8inch dim
8	60.01	MSA	Survey Abandoned



## Section Summary

Project

3/3/2022

Pipe Segment  
Reference

City

Street

Total Length

Upstream MH

AA18042

Downstream MH


AA18046

Shape

Circular 8inch

Material

Vitrified Clay Pipe

	Distance	PACP Code	Observation
1	 0.00	AMH	Manhole
2	0.00	MWL	Water Level, 15% of the vertical dimension
3	1.34	DAGS	Deposits Attached Grease, 5% of cross sectional area from 7 o'clock to 5 o'clock, within 8 inch, Start
4	2.62	TFA	Tap Factory Made Active at 9 o'clock, 8inch dim
5	53.86	RMJ	Roots Medium Joint from 6 o'clock to 11 o'clock, 30% lost, within 8 inch
6	56.37	RMJ	Roots Medium Joint from 7 o'clock to 5 o'clock, 40% lost, within 8 inch
7	69.51	JOL	Joint Offset Large, 2Inch
8	114.59	RBJ	Roots Ball Joint from 7 o'clock to 5 o'clock, 55% lost, within 8 inch
9	125.21	DAGS	Deposits Attached Grease, 5% of cross sectional area from 4 o'clock to 8 o'clock, within 8 inch, Start
10	125.21	DAGS	Deposits Attached Grease, 5% of cross sectional area from 7 o'clock to 5 o'clock, within 8 inch, Finish
11	146.28	TFA	Tap Factory Made Active at 9 o'clock, 8inch dim
12	193.19	RFJ	Roots Fine Joint from 10 o'clock to 4 o'clock, within 8 inch
13	213.98	MMC	Material Change
14	218.57	DAGS	Deposits Attached Grease, 5% of cross sectional area from 4 o'clock to 8 o'clock, within 8 inch, Finish
15	260.41	AMH	Manhole



## Inspection report

Date: <b>3/3/2022</b>	Work Order:	Weather:	Surveyed By: <b>JAMES HAAKER</b>	Certificate Number: <b>U03180703001068</b>	Pipe Segment Ref.:
Year laid:	Pre-cleaning: <b>Not Known</b>	Direction: <b>Downstream</b>	Pipe Joint Length:	Total Length: <b>246.3 '</b>	Length Surveyed: <b>246.3 '</b>

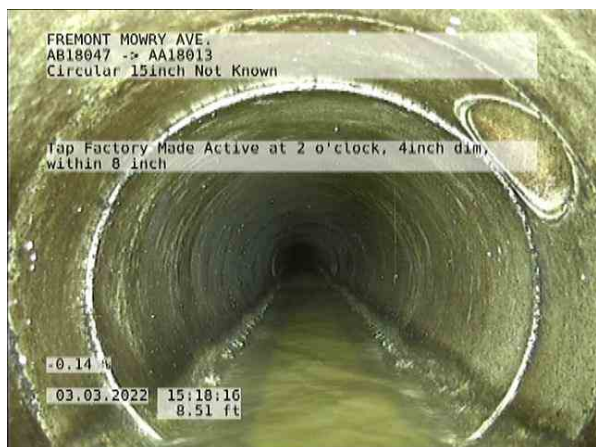
City: <b>FREMONT</b>	Drainage Area:	Upstream MH: <b>AB18047</b>
Street: <b>MOWRY AVE.</b>	Media Label:	Up Rim to Invert: <b>0.0</b>
Location Code:	Flow Control:	Downstream MH: <b>AA18013</b>
Location Details:	Sheet Number:	Down Rim to Invert: <b>0.0</b>
Pipe shape: <b>Circular</b>	Sewer Use:	Total gallons used: <b>0.0</b>
Pipe size: <b>15 "</b>	Sewer Category: <b>SEC</b>	Joints passed: <b>0</b>
Pipe material: <b>Not Known</b>	Purpose:	Joints failed: <b>0</b>
Lining Method:	Owner:	

Additional Info:

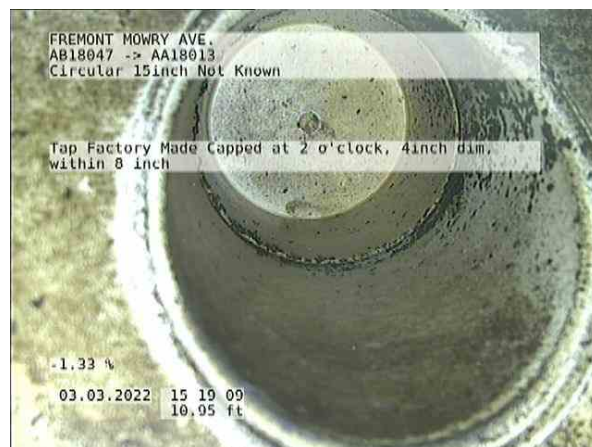
1:1860	Distance	Code	Observation	Counter	Photo	Grade		
<b>AB18047</b>								
	0.00	AMH	Manhole / AB18047					
	0.00	MWL	Water Level, 20% of the vertical dimension	00:00:22				
	8.51	TFC	Tap Factory Made Capped at 2 o'clock, 4inch dim, within 8 inch	00:01:12	06502b25-b380-4528-863d-8e4			
	117.05	DNF	Deposits Ingress Fine, 5% of cross sectional area from 7 o'clock to 5 o'clock, within 8 inch	00:08:25	1838de70-8294-4df7-98fd-1d70	M2		
	150.11	TFA	Tap Factory Made Active at 2 o'clock, 4inch dim, within 8 inch	00:10:28	74ae5de5-e4f4-45e4-93a7-8cd8			
	167.27	DNF	Deposits Ingress Fine, 5% of cross sectional area from 7 o'clock to 5 o'clock, within 8 inch	00:12:24	2109d321-afc0-49d1-a38f-2c0bf	M2		
	185.43	DNF	Deposits Ingress Fine, 5% of cross sectional area from 7 o'clock to 5 o'clock, within 8 inch	00:13:46	5f19e0a0-7829-4c2c-9981-7c6	M2		
	205.22	DNF	Deposits Ingress Fine, 5% of cross sectional area from 7 o'clock to 5 o'clock, within 8 inch	00:17:06	d9a2f252-7716-45fa-8ece-e563	M2		
	246.34	AMH	Manhole / AA18013	00:19:25				
<b>AA18013</b>								
QSR	QMR	QOR	SPR	MPR	OPR	SPRI	MPRI	OPRI
0000	2400	2400	0.0	8.0	8.0	0.0	2.0	2.0

## Section Pictures - 3/3/2022

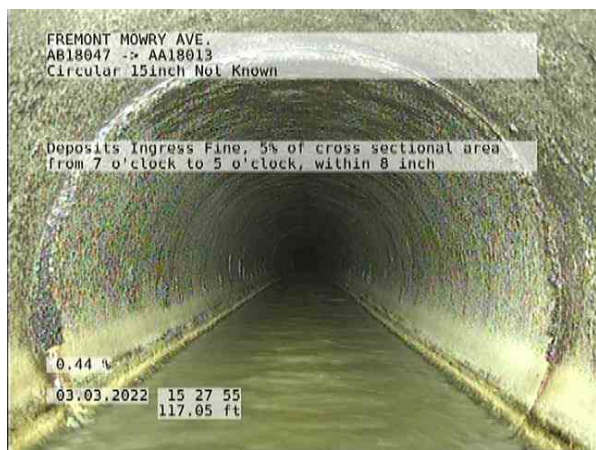
City	Street	Date 3/3/2022	Pipe Segment Reference	Nr. 1
------	--------	------------------	------------------------	----------



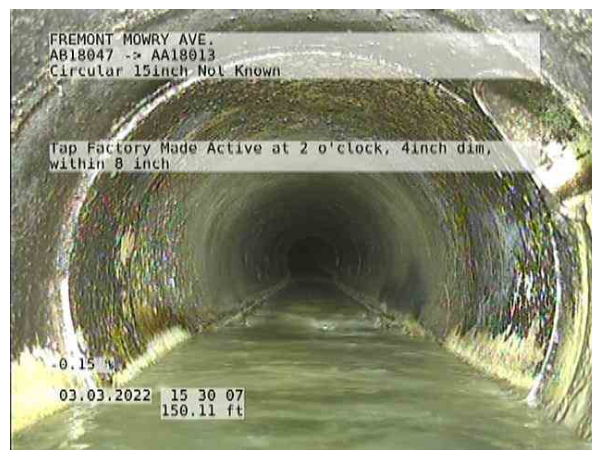
06502b25-b380-4528-863d-8e4da1c52bdf\_20220303\_152131\_692.jpg, 00:01:12, 8.51ft  
Tap Factory Made Capped at 2 o'clock, 4inch dim, within 8 inch



fac6e01e-de05-48c6-b3e1-b9a5d6d69ab0\_20220303\_152225\_406.jpg, 00:01:12, 8.51ft  
Tap Factory Made Capped at 2 o'clock, 4inch dim, within 8 inch



1838de70-8294-4df7-98fd-1d7064226b32\_20220303\_153111\_088.jpg, 00:08:25, 117.05ft  
Deposits Ingress Fine, 5% of cross sectional area from 7 o'clock to 5 o'clock, within 8 inch



74ae5de5-e4f4-45e4-93a7-8cd8b4394856\_20220303\_153323\_034.jpg, 00:10:28, 150.11ft  
Tap Factory Made Active at 2 o'clock, 4inch dim, within 8 inch

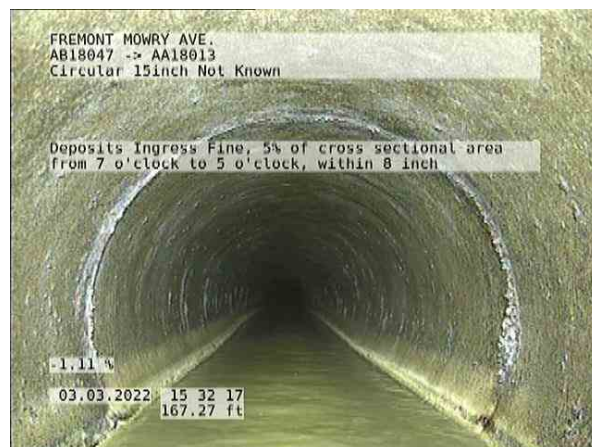


## Section Pictures - 3/3/2022

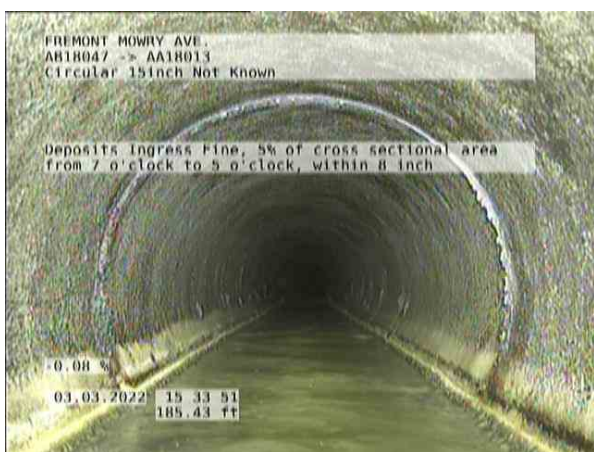
City	Street	Date	Pipe Segment Reference	Nr.
------	--------	------	------------------------	-----



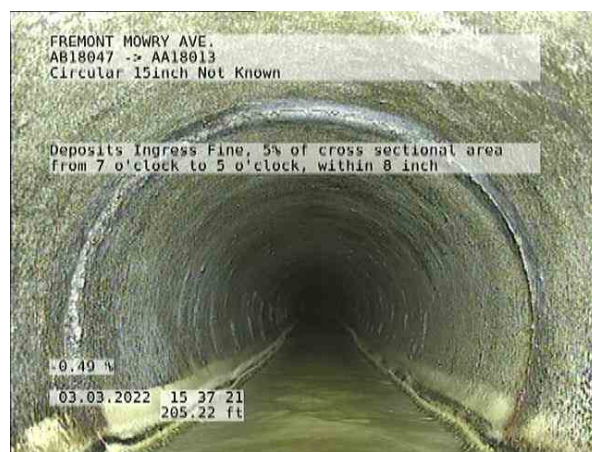
aabfb3fe-d1b5-436a-9cdf-de2d4b0cc9bb\_20220303\_153340\_421.jpg, 00:10:28, 150.11ft  
Tap Factory Made Active at 2 o'clock, 4inch dim, within 8 inch



2109d321-afc0-49d1-a38f-2c0bfff81c31\_20220303\_153533\_419.jpg, 00:12:24, 167.27ft  
Deposits Ingress Fine, 5% of cross sectional area from 7 o'clock to 5 o'clock, within 8 inch



5f19e0a0-7829-4c2c-9981-7c6dbea3ed25\_20220303\_153707\_064.jpg, 00:13:46, 185.43ft  
Deposits Ingress Fine, 5% of cross sectional area from 7 o'clock to 5 o'clock, within 8 inch



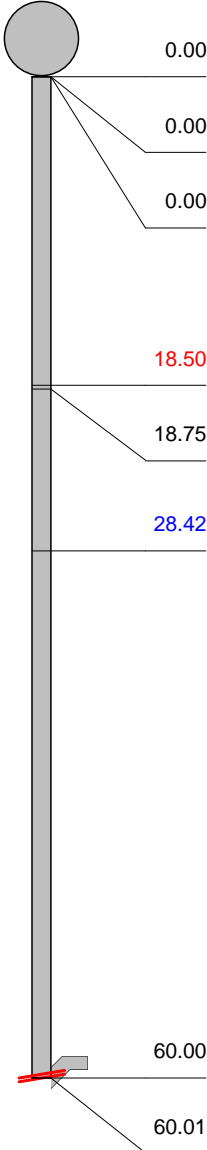
d9a2f252-7716-45fa-8ece-e5638fe02b04\_20220303\_154037\_007.jpg, 00:17:06, 205.22ft  
Deposits Ingress Fine, 5% of cross sectional area from 7 o'clock to 5 o'clock, within 8 inch

## Inspection report

Date: <b>3/4/2022</b>	Work Order:	Weather:	Surveyed By: <b>JAMES HAAKER</b>	Certificate Number: <b>U03180703001068</b>	Pipe Segment Ref.:
Year laid:	Pre-cleaning: <b>Not Known</b>	Direction: <b>Downstream</b>	Pipe Joint Length:	Total Length: <b>60.0'</b>	Length Surveyed: <b>60.0'</b>

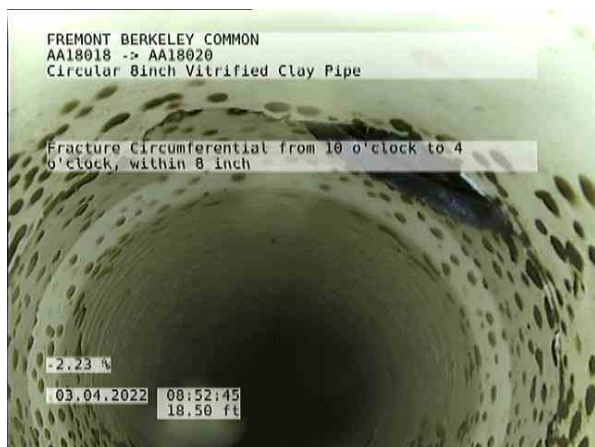
City:	Drainage Area:	Upstream MH:	<b>AA18018</b>
Street:	Media Label:	Up Rim to Invert:	<b>0.0</b>
Location Code:	Flow Control:	Downstream MH:	<b>AA18020</b>
Location Details:	Sheet Number:	Down Rim to Invert:	<b>0.0</b>
Pipe shape: <b>Circular</b>	Sewer Use:	Total gallons used:	<b>0.0</b>
Pipe size: <b>8"</b>	Sewer Category: <b>SEC</b>	Joints passed:	<b>0</b>
Pipe material: <b>Vitrified Clay Pipe</b>	Purpose:	Joints failed:	<b>0</b>
Lining Method:	Owner:		

Additional Info:

1:453	Distance	Code	Observation	Counter	Photo	Grade		
AA18018								
	0.00	AMH	Manhole / AA18018					
	0.00	MWL	Water Level, 10% of the vertical dimension	00:00:54				
	0.00	MMC	Material Change / UNKNOWN	00:01:01				
	18.50	FC	Fracture Circumferential from 10 o'clock to 4 o'clock, within 8 inch	00:03:50	5c6b0456-86b4-4a46-bfb7-c0ec	S2		
	18.75	ISZ	Intruding Sealing Other, 5% of cross sectional area from 12 o'clock to 2 o'clock	00:04:02	064060e0-ac33-4e4d-9616-a37	M2		
	28.42	MWLS	Water Level, Sag in pipe, 10% of the vertical dimension	00:04:48	6607f3b2-b39a-4d0a-9e67-3f0f	S2		
	60.00	TFA	Tap Factory Made Active at 7 o'clock, 8inch dim	00:07:16	79d0968e-8e48-4028-9614-d1d			
	60.01	MSA	Survey Abandoned / UNABLE TO PROCEED	00:07:27	45976fa0-d858-4d87-a220-c49			
QSR	QMR	QOR	SPR	MPR	OPR	SPRI	MPRI	OPRI
2200	2100	2300	4.0	2.0	6.0	2.0	2.0	2.0

## Section Pictures - 3/4/2022

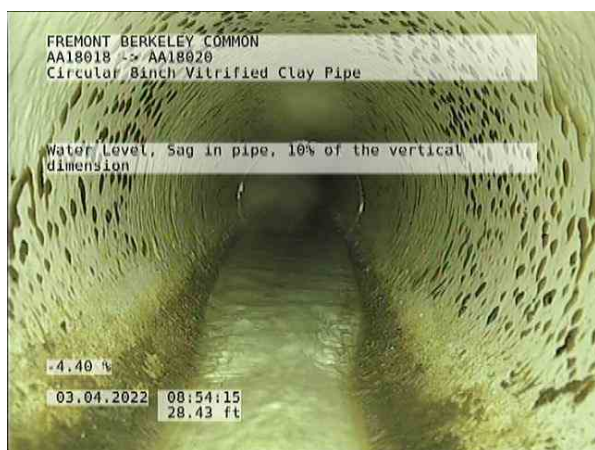
City	Street	Date	Pipe Segment Reference	Nr.
------	--------	------	------------------------	-----



5c6b0456-86b4-4a46-bfb7-c0ec9aa5fcec\_20220304\_085606\_005.jpg, 00:03:50, 18.50ft  
Fracture Circumferential from 10 o'clock to 4 o'clock, within 8 inch



064060e0-ac33-4e4d-9616-a37397b29975\_20220304\_085643\_464.jpg, 00:04:02, 18.75ft  
Intruding Sealing Other, 5% of cross sectional area from 12 o'clock to 2 o'clock



6607f3b2-b39a-4d0a-9e67-3f0fa5aec836\_20220304\_085735\_983.jpg, 00:04:48, 28.42ft  
Water Level, Sag in pipe, 10% of the vertical dimension



79d0968e-8e48-4028-9614-d1dea52b0461\_20220304\_090019\_482.jpg, 00:07:16, 60.00ft  
Tap Factory Made Active at 7 o'clock, 8inch dim



## Section Pictures - 3/4/2022

City	Street	Date	Pipe Segment Reference	Nr.
------	--------	------	------------------------	-----



45976fa0-d858-4d87-a220-c4968c4dc0c5\_20220304\_090047  
\_891.jpg, 00:07:27, 60.01ft  
Survey Abandoned / UNABLE TO PROCEED



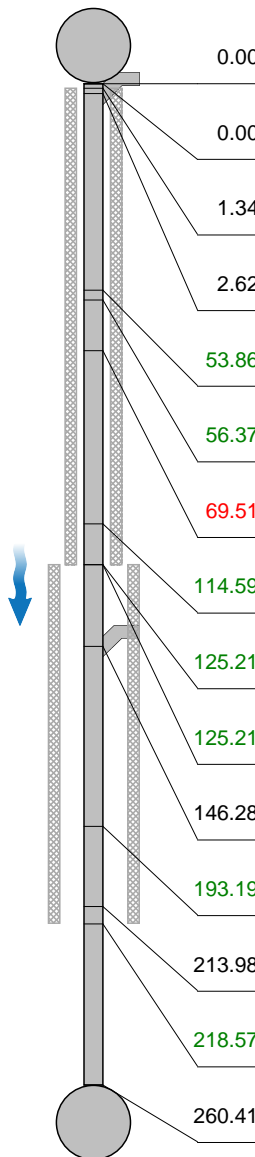


## Inspection report

Date: <b>3/4/2022</b>	Work Order:	Weather:	Surveyed By: <b>JAMES HAAKER</b>	Certificate Number: <b>U03180703001068</b>	Pipe Segment Ref.:
Year laid:	Pre-cleaning: <b>Not Known</b>	Direction: <b>Downstream</b>	Pipe Joint Length:	Total Length: <b>260.4 '</b>	Length Surveyed: <b>260.4 '</b>

City:	Drainage Area:	Upstream MH:	<b>AA18042</b>
Street:	Media Label:	Up Rim to Invert:	<b>0.0</b>
Location Code:	Flow Control:	Downstream MH:	<b>AA18046</b>
Location Details:	Sheet Number:	Down Rim to Invert:	<b>0.0</b>
Pipe shape: <b>Circular</b>	Sewer Use:	Total gallons used:	<b>0.0</b>
Pipe size: <b>8 "</b>	Sewer Category: <b>SEC</b>	Joints passed:	<b>0</b>
Pipe material: <b>Vitrified Clay Pipe</b>	Purpose:	Joints failed:	<b>0</b>
Lining Method:	Owner:		

Additional Info:

1:1966	Distance	Code	Observation	Counter	Photo	Grade		
AA18042								
	0.00	AMH	Manhole / AA18042	00:00:08				
	0.00	MWL	Water Level, 15% of the vertical dimension	00:00:20				
	1.34	S01	DAGS Deposits Attached Grease, 5% of cross sectional area from 7 o'clock to 5 o'clock, within 8 inch, Start	00:00:37				
	2.62	TFA	Tap Factory Made Active at 9 o'clock, 8inch dim	00:00:56	626b4da8-a746-4bd2-a730-537			
	53.86	RMJ	Roots Medium Joint from 6 o'clock to 11 o'clock, 30% lost, within 8 inch	00:04:32	5559355e-fb83-4b22-821f-9f099	M3		
	56.37	RMJ	Roots Medium Joint from 7 o'clock to 5 o'clock, 40% lost, within 8 inch	00:05:06	b52b294c-591d-4a22-9be7-f587	M3		
	69.51	JOL	Joint Offset Large, 2Inch	00:09:34	46879e3d-6281-4635-99bd-14b	S2		
	114.59	RBJ	Roots Ball Joint from 7 o'clock to 5 o'clock, 55% lost, within 8 inch	00:11:21	a57e27f6-9469-432a-b902-0b5	M4		
	125.21	S02	DAGS Deposits Attached Grease, 5% of cross sectional area from 4 o'clock to 8 o'clock, within 8 inch, Start	00:14:59		M2		
	125.21	F01	DAGS Deposits Attached Grease, 5% of cross sectional area from 7 o'clock to 5 o'clock, within 8 inch, Finish	00:14:52		M2		
	146.28	TFA	Tap Factory Made Active at 9 o'clock, 8inch dim	00:16:15	2f4053a4-b2d1-4c3b-a25c-60a			
	193.19	RFJ	Roots Fine Joint from 10 o'clock to 4 o'clock, within 8 inch	00:18:46	80d536cc-b314-45a4-a49e-69a	M1		
	213.98	MMC	Material Change / UNKNOWN	00:19:56	54b821e7-67d6-44a3-941b-98a			
	218.57	F02	DAGS Deposits Attached Grease, 5% of cross sectional area from 4 o'clock to 8 o'clock, within 8 inch, Finish	00:21:10		M2		
	260.41	AMH	Manhole / AA18046	00:23:10	a263860c-a6a2-479e-9ff7-e554			
AA18046								
QSR	QMR	QOR	SPR	MPR	OPR	SPRI	MPRI	OPRI
2100	4132	4132	2.0	63.0	65.0	2.0	2.1	2.1

## Section Pictures - 3/4/2022

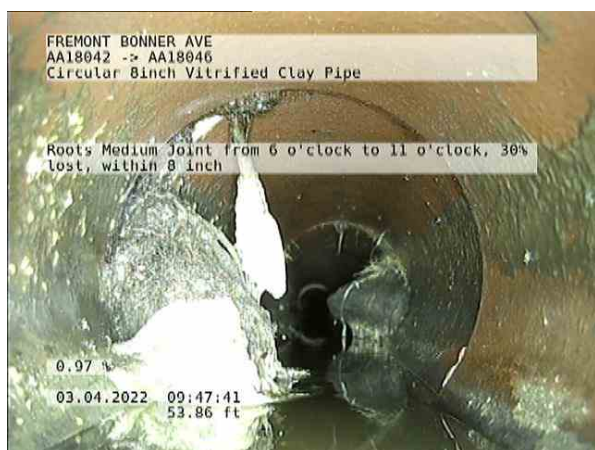
City	Street	Date	Pipe Segment Reference	Nr.
------	--------	------	------------------------	-----



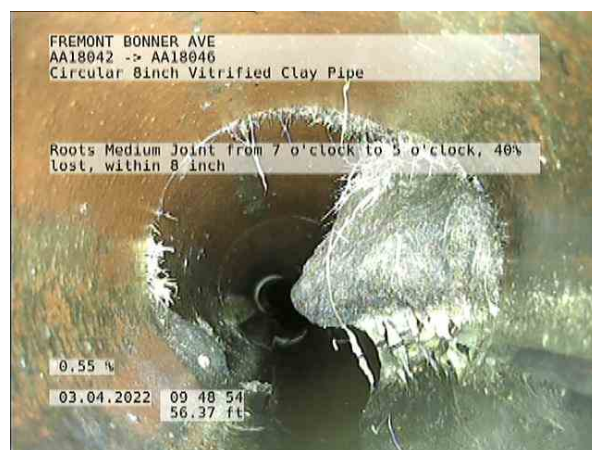
626b4da8-a746-4bd2-a730-53747eb5db4b\_20220304\_094650\_769.jpg, 00:00:56, 2.62ft  
Tap Factory Made Active at 9 o'clock, 8 inch dim



eb691bf9-e3dd-420e-91a1-898869efc619\_20220304\_094712\_326.jpg, 00:00:56, 2.62ft  
Tap Factory Made Active at 9 o'clock, 8 inch dim



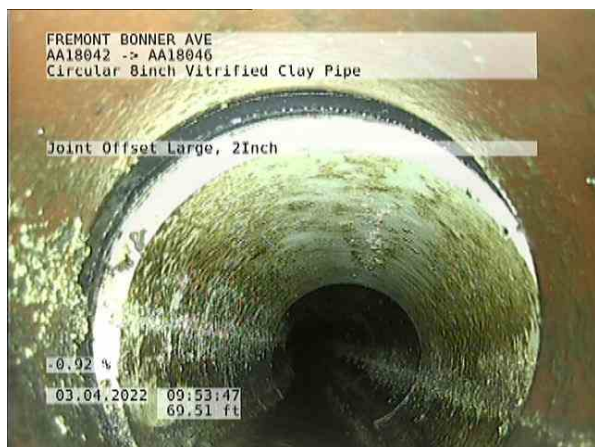
5559355e-fb83-4b22-821f-9f099dba9871\_20220304\_095100\_862.jpg, 00:04:32, 53.86ft  
Roots Medium Joint from 6 o'clock to 11 o'clock, 30% lost, within 8 inch



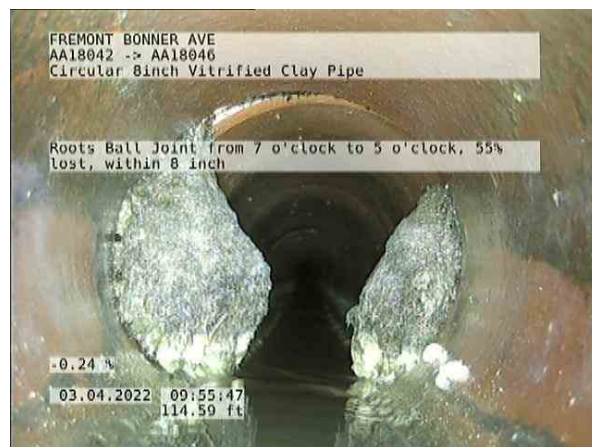
b52b294c-591d-4a22-9be7-f5875e7dddfc\_20220304\_095213\_923.jpg, 00:05:06, 56.37ft  
Roots Medium Joint from 7 o'clock to 5 o'clock, 40% lost, within 8 inch

## Section Pictures - 3/4/2022

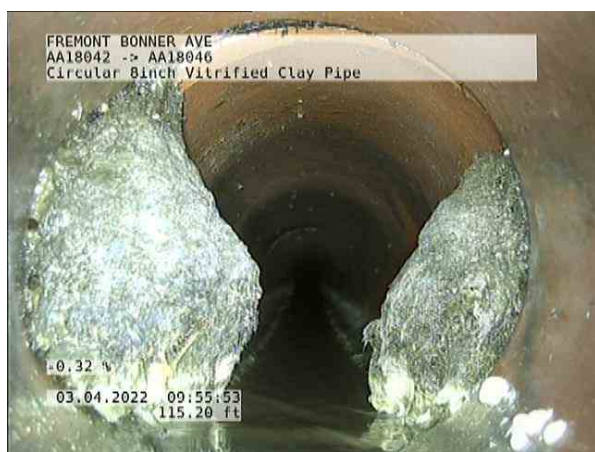
City	Street	Date	Pipe Segment Reference	Nr.
------	--------	------	------------------------	-----



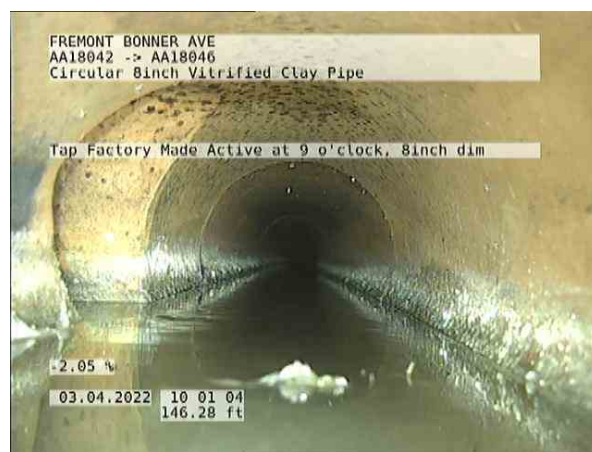
46879e3d-6281-4635-99bd-14b07bd756c6\_20220304\_095706\_522.jpg, 00:09:34, 69.51ft  
Joint Offset Large, 2Inch



a57e27f6-9469-432a-b902-0b575c0a2d1b\_20220304\_095907\_076.jpg, 00:11:21, 114.59ft  
Roots Ball Joint from 7 o'clock to 5 o'clock, 55% lost, within 8 inch



1518dc71-c044-4645-894f-5bed991453cd\_20220304\_095913\_074.jpg, 00:11:21, 114.59ft  
Roots Ball Joint from 7 o'clock to 5 o'clock, 55% lost, within 8 inch



2f4053a4-b2d1-4c3b-a25c-60ad07f8817f\_20220304\_100423\_630.jpg, 00:16:15, 146.28ft  
Tap Factory Made Active at 9 o'clock, 8inch dim

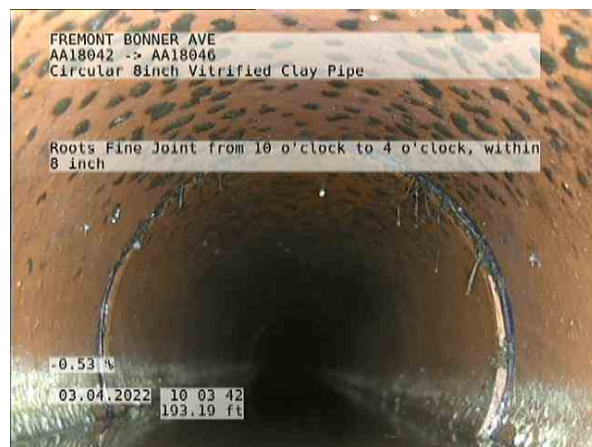


## Section Pictures - 3/4/2022

City	Street	Date	Pipe Segment Reference	Nr.
------	--------	------	------------------------	-----



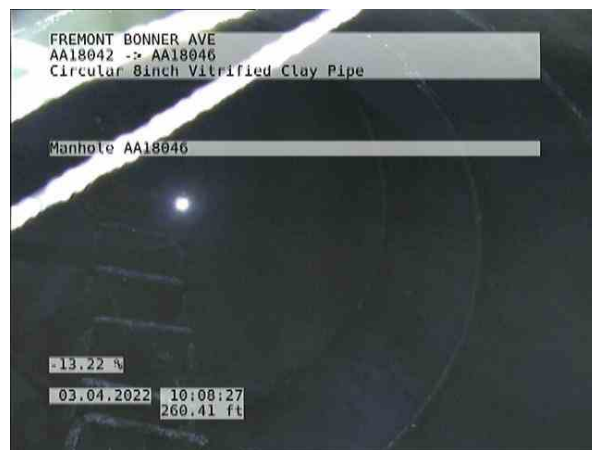
9c13d6b2-8cd5-4680-b772-597f4fdcee1a\_20220304\_100438\_032.jpg, 00:16:15, 146.28ft  
Tap Factory Made Active at 9 o'clock, 8inch dim



80d536cc-b314-45a4-a49e-69acfa214227\_20220304\_100702\_114.jpg, 00:18:46, 193.19ft  
Roots Fine Joint from 10 o'clock to 4 o'clock, within 8 inch



54b821e7-67d6-44a3-941b-98a3b7c02a09\_20220304\_100820\_292.jpg, 00:19:56, 213.98ft  
Material Change / UNKNOWN



a263860c-a6a2-479e-9ff7-e554c19a1c0b\_20220304\_101146\_245.jpg, 00:23:10, 260.41ft  
Manhole / AA18046