



GPRS

VIDEO PIPE INSPECTION

STATEMENT OF QUALIFICATIONS



GPRS

TABLE OF CONTENTS

- 02-03 /// THE GPRS VALUE/US INFRASTRUCTURE STATS
- 04-05 /// HISTORY OF PERFORMANCE/NATIONAL FOOTPRINT
- 06-07 /// SAFETY STATISTICS/RISK MANAGEMENT
- 08-09 /// TEAM MEMBERS/PROJECT MANAGERS
- 10-11 /// THE GPRS ACADEMY
- 12-13 /// SUBSURFACE INVESTIGATION METHODOLOGY
- 14-15 /// LIFE CYCLE SOLUTIONS/PROJECT CYCLE TIMELINE
- 16-23 /// VIDEO PIPE INSPECTION
- 24-27 /// NASSCO TRAINING AND DELIVERABLES
- 28-31 /// VIDEO PIPE INSPECTION CASE STUDIES
- 32-33 /// UTILITY LOCATING
- 34-35 /// CONCRETE IMAGING
- 36-37 /// MAPPING & MODELING
- 38-39 /// LEAK DETECTION
- 40-41 /// 3D LASER SCANNING
- 42-43 /// SITEMAP
- 44-45 /// JOIN US

/// THE GPRS STORY

Founded in 2001, GPRS Visualizes The Built World™ above and below ground. We are the nation's largest utility locator with Project Managers based in every primary market in the United States. Our services include Utility Locating, Concrete Scanning, 3D Laser Scanning, Video Pipe Inspection, and Leak Detection.


With GPRS, clients rest assured that our rigorously trained Project Managers using state-of-the-art technology deliver the most accurate information. GPRS leads the industry – providing outstanding service and cutting-edge technology – keeping projects on time, reducing safety risks, and putting relationships with our clients first.

GPRS has completed hundreds of thousands of projects with over a **99.8%** accuracy rating. Join us in the pursuit of 100% subsurface damage prevention ■

VISUALIZING THE BUILT WORLD™


/// ABOVE AND BELOW GROUND

 UTILITY LOCATING

 MAPPING & MODELING

 VIDEO PIPE INSPECTION

 CONCRETE IMAGING

 LEAK DETECTION

 3D LASER SCANNING

/// THE GPRS VALUE



NATIONWIDE SERVICE

We have team members in every major metropolitan area in the United States, ready to handle any project nationwide.



RAPID RESPONSE

Time is always critical in any construction project. We understand this and have developed our operations so we can be on site within 48 hours.



CONSULTATIVE APPROACH

Our Project Managers are trained to ask questions and provide you with answers. This consultative approach helps us quickly identify your subsurface issues and ensure we provide valuable solutions to keep your job moving.



PROVEN RESULTS

We deploy the best equipment operated by expert Project Managers. Since our inception, GPRS has completed hundreds of thousands of projects in North America with a 99.8%+ accuracy rating.



/// PROVEN ACCURACY

Since 2017, we have completed over 300,000 projects with a 99.8% accuracy rate along with a 99%+ approval rating according to our customer satisfaction survey. Historically, nearly 80% of our business is either repeat or referral. GPRS focuses on long-term performance and recognizes that repeatable accuracy will ensure customer satisfaction and business longevity ■

/// US INFRASTRUCTURE STATS

In the U.S., there are over 800,000 miles of public sewers and 500,000 miles of private lateral sewers connecting private property to public sewer lines. Each of these conveyance systems is susceptible to structural failure, blockages, and overflows.

Approximately 50% of annual expenditures, in the wastewater sector, go to operation and maintenance.

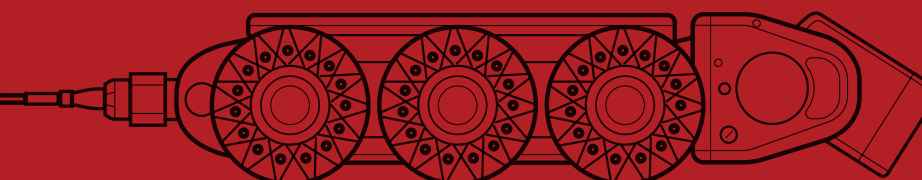
There are roughly 1 million miles of potable water piping across the country. With many of these pipes having been installed in the early mid-20th century, it is no surprise that an estimated 240,000+ water main breaks occur per year.

According to the ASCE, the total infrastructure budget needed to repair and upgrade our wastewater system is estimated at \$150 billion.

Sanitary sewer overflows are due to blockages, line breaks, sewer defects that allow water to overload the system, lapses in sewer system operation and maintenance, power failures, inadequate sewer design, and vandalism. The EPA estimates that there are at least 23,000 to 75,000 sanitary sewer overflows per year ■

Source – ASCE Infrastructure Report Card

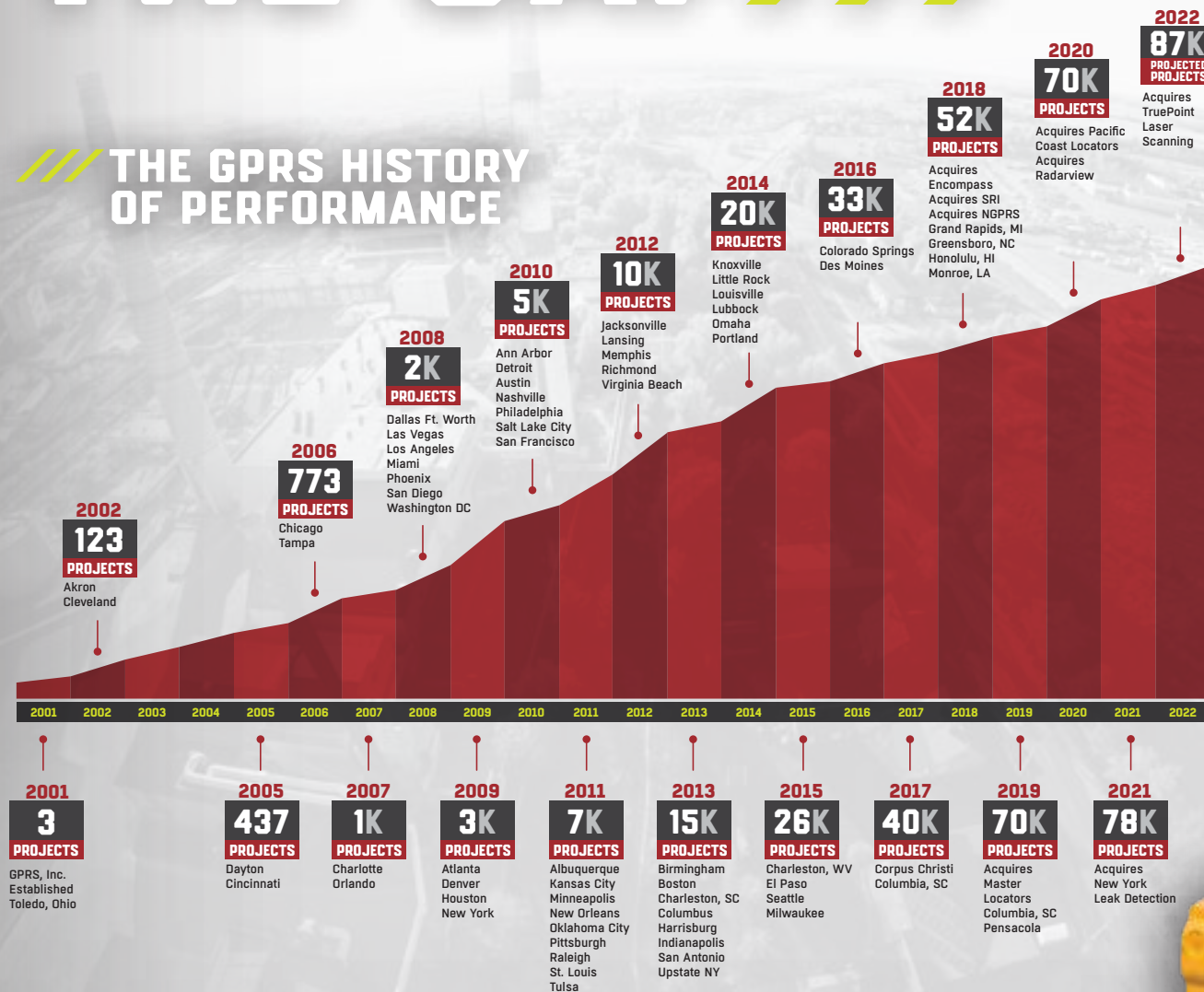
IN THE UNITED STATES, THERE ARE
1,000,000 MILES OF POTABLE WATER PIPING
800,000 MILES PUBLIC SEWERS
500,000 MILES OF PRIVATE LATERAL SEWERS
GPRS INSPECTS THEM ALL.



WIDENING THE GAP

NATIONAL FOOTPRINT

GPRS provides our services throughout all major metropolitan areas in the United States. Our footprint ensures that we can offer rapid response to your jobsites and projects, often within 24 hours. We have highly trained, Nassco Certified personnel that are able to commit to large projects, obscure geographic locations, and unique jobsite requirements ■



WIDENING THE GAP

Widening the Gap means that we aren't looking to the industry norms to dictate how well we perform. To push the industry forward, we want to widen the gap between our work and the industry standard.

DID YOU KNOW? 1 MILLION HOURS WORKED IN 2021

DID YOU KNOW? GPRS DROVE OVER 8.7 MILLION MILES IN 2021

SAFETY

ALWAYS ON OUR RADAR

**SAFETY AND DAMAGE
PREVENTION ARE OUR
TOP PRIORITY.**

2021 SAFETY STATISTICS

Safety is one of our core values. Our safety focus has earned us an impressive record:

**TOTAL
MAN HOURS
1,000,000+**

**AVERAGE NUMBER
OF EMPLOYEES
400+**

**EMR
0.47**

**LOST TIME
INCIDENTS
0**

SAFETY TRAINING

We are firm believers in continuous safety education for all of our employees:








SAFETY PARTNERSHIPS

GPRS is proud to partner with several leading safety compliance organizations:



RISK MANAGEMENT

GPRS services reduce the risk for you, your team,
and your assets ■

-  BUDGET OVERRUNS
-  PROJECT DOWNTIME
-  PROPERTY DAMAGE
-  DAMAGED REPUTATION
-  INJURIES & ACCIDENTS

INSURANCE COVERAGE

GPRS is prepared to meet the insurance and safety demands
of the most rigorous project-specific requirements.

- Commercial general liability insurance policy: 1-million-dollar limit with a 10-million-dollar umbrella policy.
- Coverage includes products and completed operations.
- Commercial policies for Automobile Liability and Workers Compensation.
- Professional/Pollution Liability policy with a 5-million-dollar limit.

**GPRS: A PIPELINE
OF CAPABILITIES**

WHAT'S UNDERNEATH MATTERS.™

/// TEAM MEMBERS

GPRS is committed to providing opportunities and development for our people, who offer sensational service for our customers. The investment GPRS makes into its team members is rooted in our understanding that each team member is a crucial differentiator in our company's success.

TEAM DEVELOPMENT

Project Managers begin with a 3-month training program that marries classroom teaching and field mentorship. This program continues throughout their career in advanced field training courses. All field personnel are part of an industry-leading promotion track that measures their field accuracy, customer service, and professionalism. We invite them to join the GPRS Leadership Development Program, focusing on personal growth in leadership and business.

TEAM CHARACTERISTICS

The most critical component to our team members' work has always been their character. Each team member exhibits our core values both inside and outside the organization. When you combine personal character, team chemistry, and industry-leading competency, the result is sensational service for our customers.

/// CORE VALUES



INTEGRITY



GROWTH MINDEDNESS



SAFETY



MUTUAL RESPECT



TEAMWORK



/// PROJECT MANAGERS

AT GPRS, WE REFER TO OUR FIELD TECHNICIANS AS PROJECT MANAGERS, BUT WHY?



START-TO-FINISH PROJECT MANAGEMENT

Our team members can assist your project from the scheduling and site walk phase through the reporting and billing phase. GPRS Project Managers are true professionals that deliver industry-leading customer service.



CLEAR & ACCURATE MARKINGS / DELIVERABLES

Our scan results are marked on the surface clearly and understandably, and we ensure all markings are discussed before leaving a job site. We also offer permanent records such as CAD and GPS satellite image overlays, and a wide variety of 2D & 3D CAD & BIM models for our Laser Scanning clients.



CLEAR COMMUNICATION

Our team members ask the right questions before arriving on site. While on site, they will do both a pre-job walk and a post-job walk.



A CAREER, NOT A JOB

Our field personnel are not just technicians, which is why we refer to them as Project Managers. They work beside a client through the entire process, providing excellent service. This is their career, their craft, and their trade. The result? A better quality service.

WE HAVE  YEARS OF FIELD EXPERIENCE

CONSISTENCY
EDUCATION
TRAINING
QUALITY
SAFETY
LEADERSHIP
ACCURACY

STARTS HERE

THE GPRS ACADEMY

The GPRS Academy leads the industry by providing a structured and comprehensive approach to equip Project Managers with the skills needed to locate and inspect water and sewer lines. Our trainers give PMs the education they require, through a classroom setting and hands-on approach.



CLASSROOM TRAINING

■ GPRS VPI Project Managers attend an industry-leading classroom training program where they learn about the video pipe inspection equipment and software programs they will be using in the field. This course provides critical training on the Envirosight and Rigid video camera systems and the WinCan program.

MENTORSHIP PROCESS

■ The next step in the training process for a VPI Project Manager is to enter into a mentorship process with a senior Project Manager. During this time, they will continue learning how to use the equipment, best practices, and start their journey to becoming a GPRS-Certified VPI Project Manager.

ON THE JOB TRAINING

■ In this stage, the Project Manager will begin to perform video pipe inspections and the SIM methodology in the field, under the direction of a senior Project Manager. Upon completion of the training process, the PM will be released as a fully certified Video Pipe Inspection Project Manager.



NASSCO INDUSTRY TRAINING

■ When the VPI Project Manager's field training is complete, they will begin the training process associated with a NASSCO certification. This class teaches the coding process used in our detailed reporting. The PM will be proficient in the PACP (Pipeline Assessment Certification Program), LACP (Lateral Assessment Certification Program) and MACP (Manhole Assessment Certification Program) programs.





/// SUBSURFACE INVESTIGATION METHODOLOGY

POWERING THE INDUSTRY STANDARD ///

Proper training, multiple technologies, and a field-tested methodology are the key to a successful utility locate. Our Project Managers master all three components by utilizing the SIM Certification.

✓ TRAINING

The industry standard recommends 8 hours as a minimum for training and 60 hours practicing GPR to become certified NDT Level I in Ground Penetrating Radar. By contrast, SIM requires 320 hours of mentorship in the field prior to 80 hours of classroom/hands-on training.

In addition, the unique combination of classroom training and on-site supervised field training reinforces what a Project Manager encounters on the job. The SIM curriculum allows them to go deeper into the technical aspects and knowledge needed to perform their jobs at the highest level.

✓ EQUIPMENT

Subsurface Investigation Methodology (SIM) requires multiple technologies to be used. With any investigation, more data points yield the best outcome. When SIM-qualified technicians locate a subsurface target such as a pipe, utility, or reinforcement with more than one technology, it confirms the accuracy of the locate. This redundancy also reduces the likelihood of missing a buried target. Redundant results bear more data points; by locating pipes and other targets with different methods utilizing each tool's strengths, technicians reduce the risk of missing key site information.

✓ METHODOLOGY

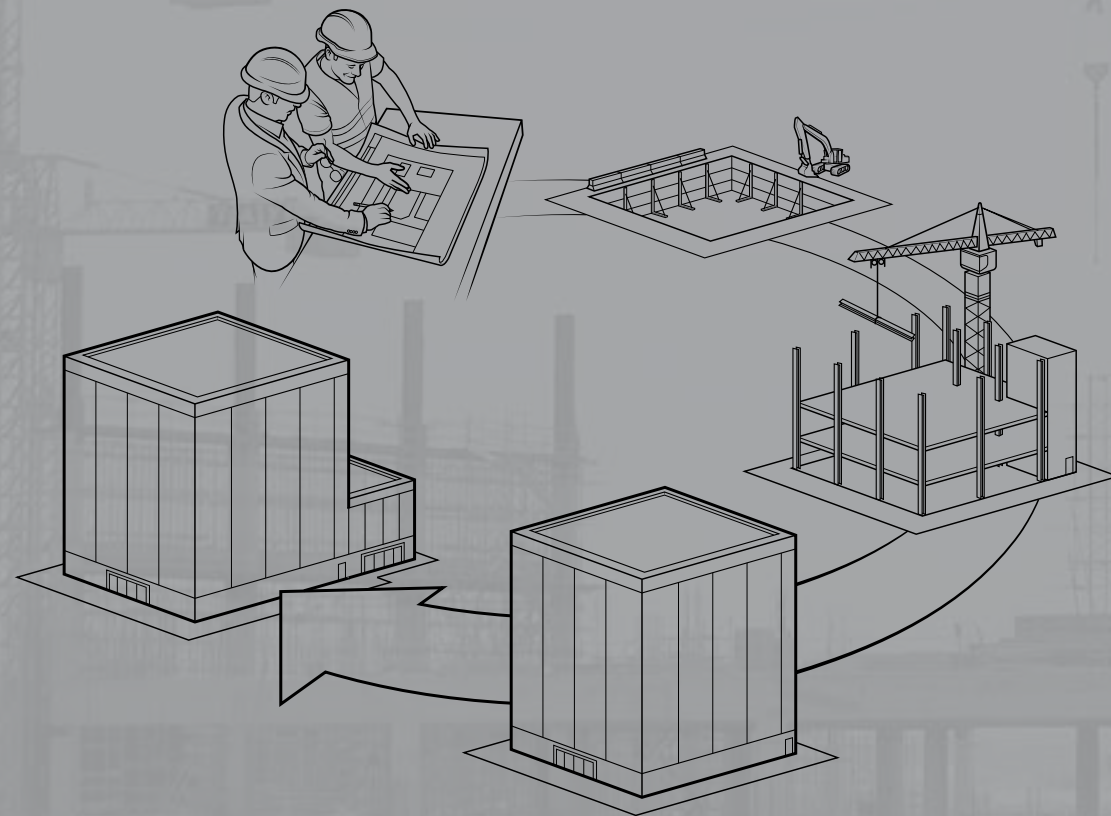
The SIM Certification is a tested process that allows technicians to acquire accurate and repeatable results. SIM is similar to a machine that requires multiple gears, all working in unison for it to function properly. One of the most critical gears and steps in the SIM process is the repeated methodology that Project Managers must know for each project.

A solid, repeatable methodology guarantees that a concrete scanning, utility locating, or video pipe inspection project can be performed by a seasoned professional and also by a new-to-the-business technician. When the SIM methodology is followed, it allows technicians to achieve the same results, regardless of their experience in the field.

SIMSPEC.ORG

DID YOU KNOW?  **99.8% ACCURACY RATE**
ON OVER 300,000 PROJECTS

PROJECT CYCLE SOLUTIONS



LIFE CYCLE SOLUTIONS

GPRS can provide solutions for the entire life cycle of your projects.

PLANNING DESIGN

We can provide information on underground utilities, known and unknown, and visualize your entire facility above and below ground, before plans and development are finalized. GPRS helps you Visualize Your Built World™ through utility locating, concrete scanning, 3D laser scanning, leak detection, and video pipe inspection to provide the complete picture. Our mapping services supplement any existing maps to assure accurate measurements of existing assets, saving time and money ■

CONSTRUCTION

Prior to trenching, directional drilling, other excavation work and demolition during the construction and renovation of subsurface and aboveground infrastructure, it's critical to pinpoint assets to develop a plan for safe crossing. GPRS provides the accurate information needed to complete the project safely ■

OM/REMODEL

Construction and renovations typically require subsurface excavations and numerous aboveground measurements. GPRS is well equipped to perform One Call locates for public and private property assets. As a project evolves, we can continue to provide support as we keep detailed reports of every project we complete ■

GPRS PROJECT CYCLE TIMELINE

CGA/DIRT 2020

468,000 LINE STRIKES

■ Utility strike every 62 seconds (public jobs or jobs reported)

\$30 BILLION IN DAMAGES

(direct and indirect)

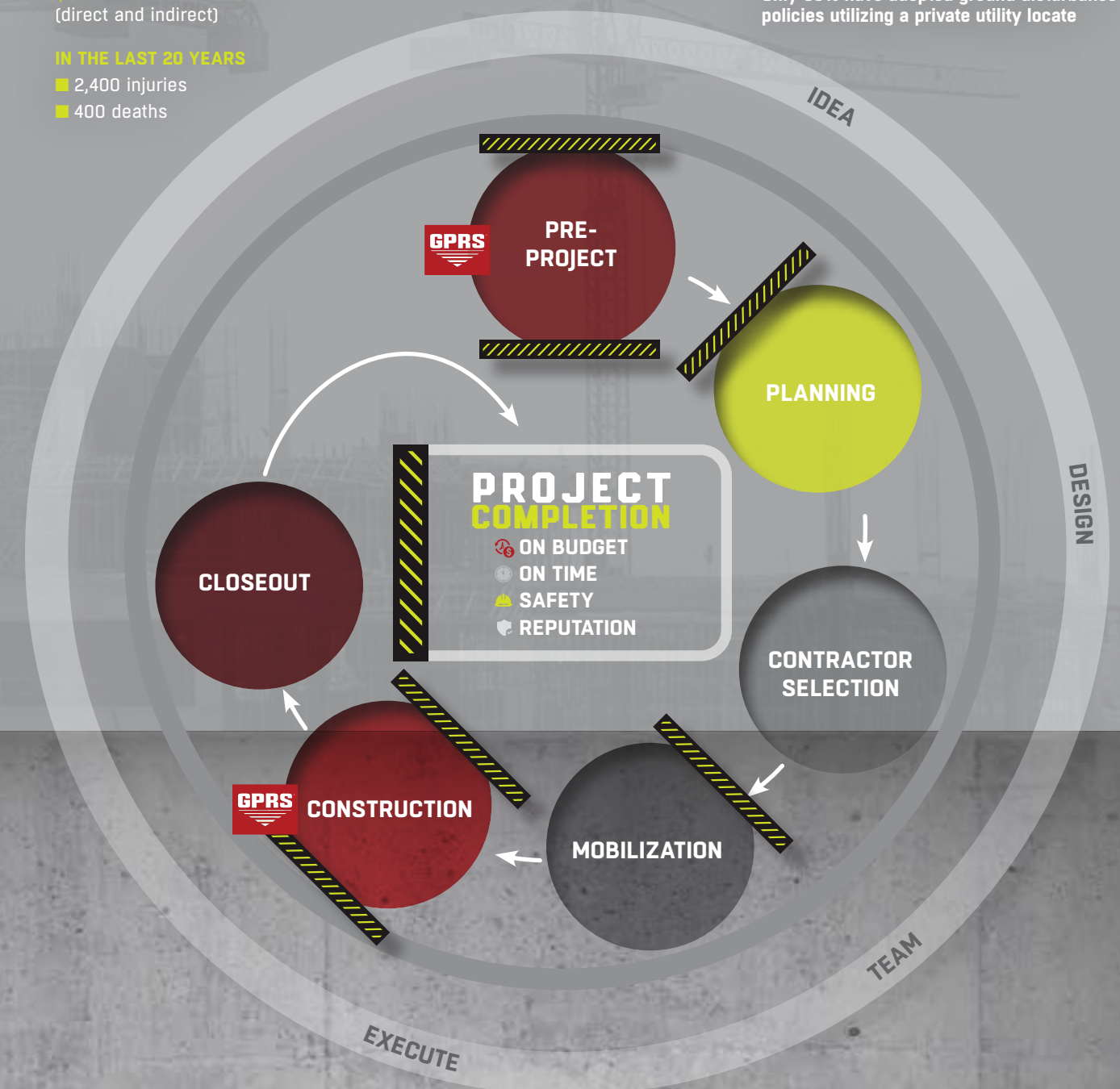
IN THE LAST 20 YEARS

■ 2,400 injuries
■ 400 deaths

ROOT CAUSE

- Insufficient dig policy
- Mismarked utilities
- No locate ticket completed

Only 35% have adopted ground disturbance policies utilizing a private utility locate



WHAT IS **YOUR** GROUND DISTURBANCE POLICY?

GPRS SERVICES



VIDEO PIPE INSPECTION

Video Pipe Inspection (CCTV) is a sewer inspection service using industry-leading video cameras to prevent problems by inspecting underground water, sewer lines, and lateral pipelines. Our NASSCO certified technicians can locate clogs, investigate cross bores, find structural faults and damage, and conduct lateral sewer line inspections.

BREAKS, DEFECTS & CROSS BORES.

GPRS FINDS THEM.

-  CCTV PIPE INSPECTIONS
-  CROSS BORE MITIGATION
-  MAINLINE INSPECTIONS
-  LATERAL INSPECTIONS
-  MANHOLE INSPECTIONS
-  UTILITY LOCATING



DID YOU KNOW?
96% OF THE ENR TOP 100 CONTRACTORS
 GPRS WORKS FOR

VIDEO PIPE INSPECTION SERVICES

When you utilize GPRS VPI services, you receive the most thorough and accurate assessment of your underground piping system available. We deploy a variety of equipment and technology to capture your system condition, pinpoint defects, and deliver a comprehensive report following NASSCO guidelines. We provide photographs and video of defects in our VPI report and rank defect conditions by severity, so you can plan maintenance and repairs to save time and money.



ROBOTIC CRAWLER (CCTV)

Robotic crawlers are powerful and rugged. This enables them to perform in extreme scenarios. GPRS Project Managers are able to provide an accurate and reliable view of pipeline condition and locations. Our CCTV cameras are capable of inspecting pipes between 6" – 96" in diameter. Our NASSCO report includes information on cracks, infractions and other imperfections in each line ■



PUSH CAMERA

GPRS Project Managers are also equipped with smaller and lighter-weight push cameras. A push camera can be manually fed into a pipe to provide real-time video to the PM. Our push cameras are equipped with a locatable sonde to allow for accurate mapping and the smaller camera is great for inspecting pipe conditions that are too narrow for the robotic crawler ■



LATERAL LAUNCH

This video tool is a sewer inspection system that allows GPRS Project Managers to inspect laterals from the mainline. This service can perform cross bore investigations as well as map the interior condition of these hard-to-reach pipes ■



GPRS Project Managers are all NASSCO Certified

“YOUR TEAM WAS UNBELIEVABLY HELPFUL AND RESPONSIVE. EVERY TIME THAT WE REQUEST GPRS VIDEO PIPE SERVICES YOU TAKE CARE OF BUSINESS.

JORGE RABANAL | SWINERTON

/// VIDEO PIPE INSPECTION SERVICES

LATERAL



LATERAL INSPECTION & MAPPING

A lateral launch sewer inspection allows for a closed-circuit television (CCTV) video inspection of pipes, including mainline and lateral pipelines, and is ideal involving situations that do not allow for a typical visual inspection. During the process, a pipe is inspected from the mainline to the lateral searching for cross bores, pipe defects, and structural issues.



CROSS BORE MITIGATION

Cross bores are dangerous and unintended intersections of utility lines. Cross bores can cause backups in the sewer lateral, damage the structural integrity of a pipe, or even cause severe explosions. VPI services can prevent gas line cross bores and is critical to minimize the risk of property damage, injury, and even death.



SEWER & WATER INSPECTIONS

GPRS Video Pipe Inspection services can help discover a collapsed sewer lateral, duct, or an unknown blockage in a pipe. This service is a non-destructive option that limits project delays and budget overruns by locating the exact impediment in your water or sewer line including bellies, collapses, tree roots, lateral taps, cross bores, or other damage.



MANHOLE INSPECTIONS

Manholes are more complex structures than typical pipes. GPRS Video Pipe Inspection Project Managers will gather detailed information to fully document all defects, determine condition of the manhole, and provide the specific information needed to recommend corrective action.



WATER & SEWER MAPPING

Our utility locating services are enhanced by our ability to discover, inspect, and map water and sewer systems by using robotic video pipe cameras, push cameras, and lateral launch cameras. Our VPI services ensure you can receive a comprehensive map of your sewer system including hard to discover elements like lateral lines.





NASSCO

NASSCO TRAINING

NASSCO is the National Association of Sewer Service Companies. NASSCO sets industry standards for assessing, maintaining, and rehabilitating underground infrastructure. All GPRS Project Managers are NASSCO trained and certified and provide NASSCO reports for our pipe inspections.

ALL GPRS PROJECT MANAGERS COMPLETE THE FOLLOWING CERTIFICATIONS:



PIPELINE ASSESSMENT & CERTIFICATION PROGRAM (PACP)

The Pipeline Assessment and Certification Program (PACP) is an international standard that has been used for many years as the assessment of pipelines, manholes, and laterals.



LATERAL ASSESSMENT (LACP)

The NASSCO program for defect coding in lateral pipes. This program is the Lateral Assessment and Certification Program (LACP). This training addresses many fittings and access points that are unique to laterals.



MANHOLE ASSESSMENT (MACP)

The Manhole Assessment and Certification Program (MACP) provides training on the gathering of detailed information to fully document all defects, determine condition of the manhole, and provide the specific information needed to recommend corrective action.

GPRS VIDEO PIPE INSPECTION MAPS, MODELS & REPORTS

WRITTEN NASSCO REPORTS WinCan

GPRS is proud to offer WinCan reporting to our Video Pipe Inspection clients. Maintaining sewers starts with understanding sewer condition, and WinCan allows GPRS Project Managers to collect detailed, NASSCO compliant inspection data.

**VISIT THIS LINK TO VIEW AN
ONLINE EXAMPLE OF OUR
REPORTING CAPABILITIES:**

[illegible]

VIDEO PIPE INSPECTION

Section Pictures - 10/0/2020

File	Device	Date	Page Inspector's Address	Section No.
10-0-2020	10-0-2020	10-0-2020	10-0-2020	1

10-0-2020 10-0-2020 10-0-2020 10-0-2020 10-0-2020
10-0-2020 10-0-2020 10-0-2020 10-0-2020 10-0-2020
10-0-2020 10-0-2020 10-0-2020 10-0-2020 10-0-2020

10-0-2020 10-0-2020 10-0-2020 10-0-2020 10-0-2020
10-0-2020 10-0-2020 10-0-2020 10-0-2020 10-0-2020
10-0-2020 10-0-2020 10-0-2020 10-0-2020 10-0-2020

10-0-2020 10-0-2020 10-0-2020 10-0-2020 10-0-2020
10-0-2020 10-0-2020 10-0-2020 10-0-2020 10-0-2020
10-0-2020 10-0-2020 10-0-2020 10-0-2020 10-0-2020

10-0-2020 10-0-2020 10-0-2020 10-0-2020 10-0-2020
10-0-2020 10-0-2020 10-0-2020 10-0-2020 10-0-2020
10-0-2020 10-0-2020 10-0-2020 10-0-2020 10-0-2020



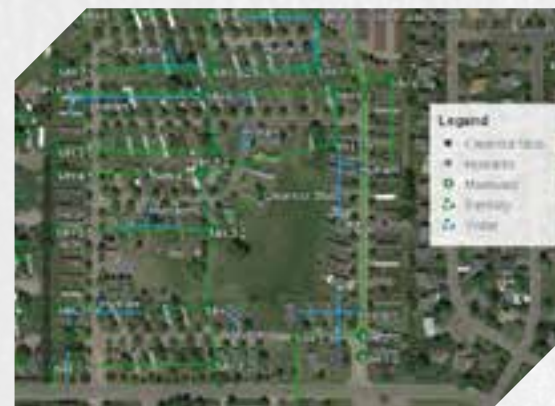
NASSCO

GPRS VIDEO PIPE INSPECTION MAPS, MODELS & REPORTS

DETAILED MAPS AND LOCATIONS

GPRS Project Managers not only inspect the interior condition of water pipes, sewer pipes, sewer laterals, and manholes – they can provide a map of their location. The GPRS Mapping & Modeling Team can provide detailed GPS overlays and CAD files.

VISIT THIS LINK TO VIEW AN
ONLINE EXAMPLE OF OUR
REPORTING CAPABILITIES:



GPRS VIDEO PIPE INSPECTION MAPS, MODELS & REPORTS

VIDEO INSPECTION FILES

Our detailed WinCan/NASSCO reports contain screen shots of the interior condition of the pipe segments that we inspect. Our Project Managers will also provide a video file of the complete inspection for further evaluation, documentation, or reference.



/// A GPRS CASE STUDY01

GPRS OFFERS COMPREHENSIVE
NASSCO REPORTS WITH **EVERY**
VIDEO PIPE INSPECTION.

TASK:
Contaminated Groundwater Infiltration.



PROBLEM

- The client requested us to locate and inspect the storm sewer system, including potential laterals at a site with known soil and groundwater contamination.
- There were no known documentation/maps of the storm sewer system or potential laterals.
- The client identified higher contaminant concentrations at the storm sewer outfall than at upstream catch basins.



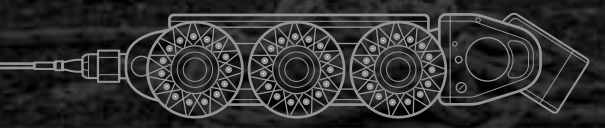
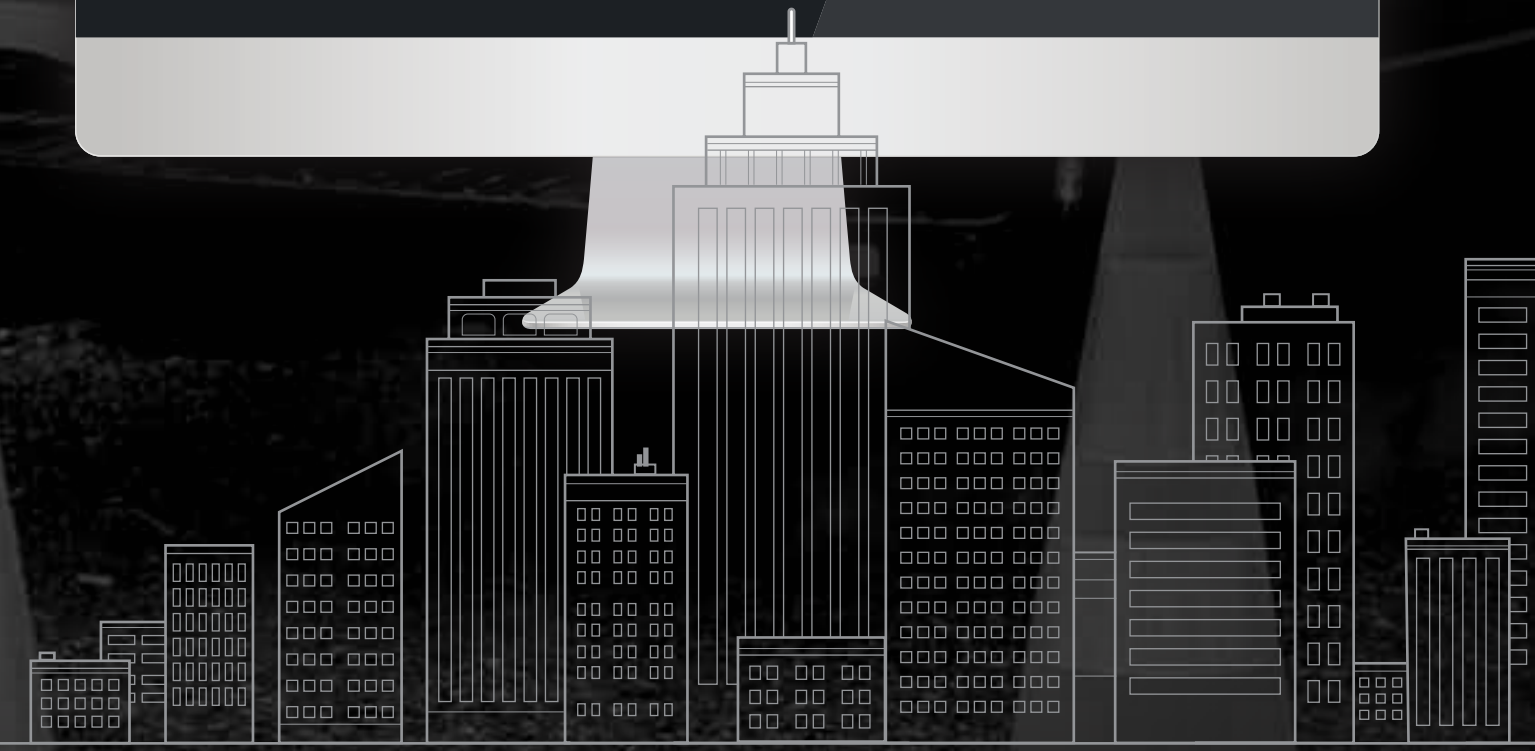
SOLUTION

- We utilized our VPI services to locate and map all storm sewer lines, laterals, and flow direction to the outfall.
- GPRS can accurately locate and map pipes using lateral launch cameras, robotic CCTV crawlers, and push cameras.
- We identified the area of groundwater intrusion into the storm sewer system, which assisted in determining which portion of the system needed to be repaired.



BENEFITS

- **On Time:** Due to our rapid response, we kept the project moving, reducing downtime.
- **On Budget:** GPRS protected the client's budget by preventing expensive and unnecessary excavations.
- **Safety:** GPRS provided accurate storm sewer locations and depths as well as the area the contaminated groundwater intrusion was identified. The client was able to dig safely, repair the line, and eliminate the contaminated groundwater infiltration.
- **Reputation:** By preventing the client from using a trial-and-error approach, they can quickly and accurately deliver their results to their customers.
- GPRS provides PDF and KMZ files for accurate storm sewer infrastructure maps.



/// A GPRS CASE STUDY 02

GPRS IDENTIFIES UTILITIES, SEWER AND STORM LINES.

TASK:

Performing Video Pipe Inspection and utility locating and maps on selected areas of property to be utilized for future construction projects.



PROBLEM

- Client has a 12' culvert approximately 20'-25' deep with laterals running directly through the proposed work area.
- Client has no known maps of sewer and storm lines on property.
- Budget overruns due to lack of prior mapping of storm culvert and sewer lines.
- Large project with tight deadlines and no way to identify the location of a 12' culvert.



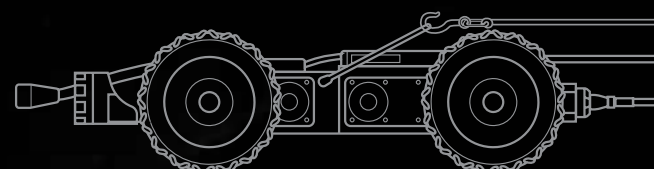
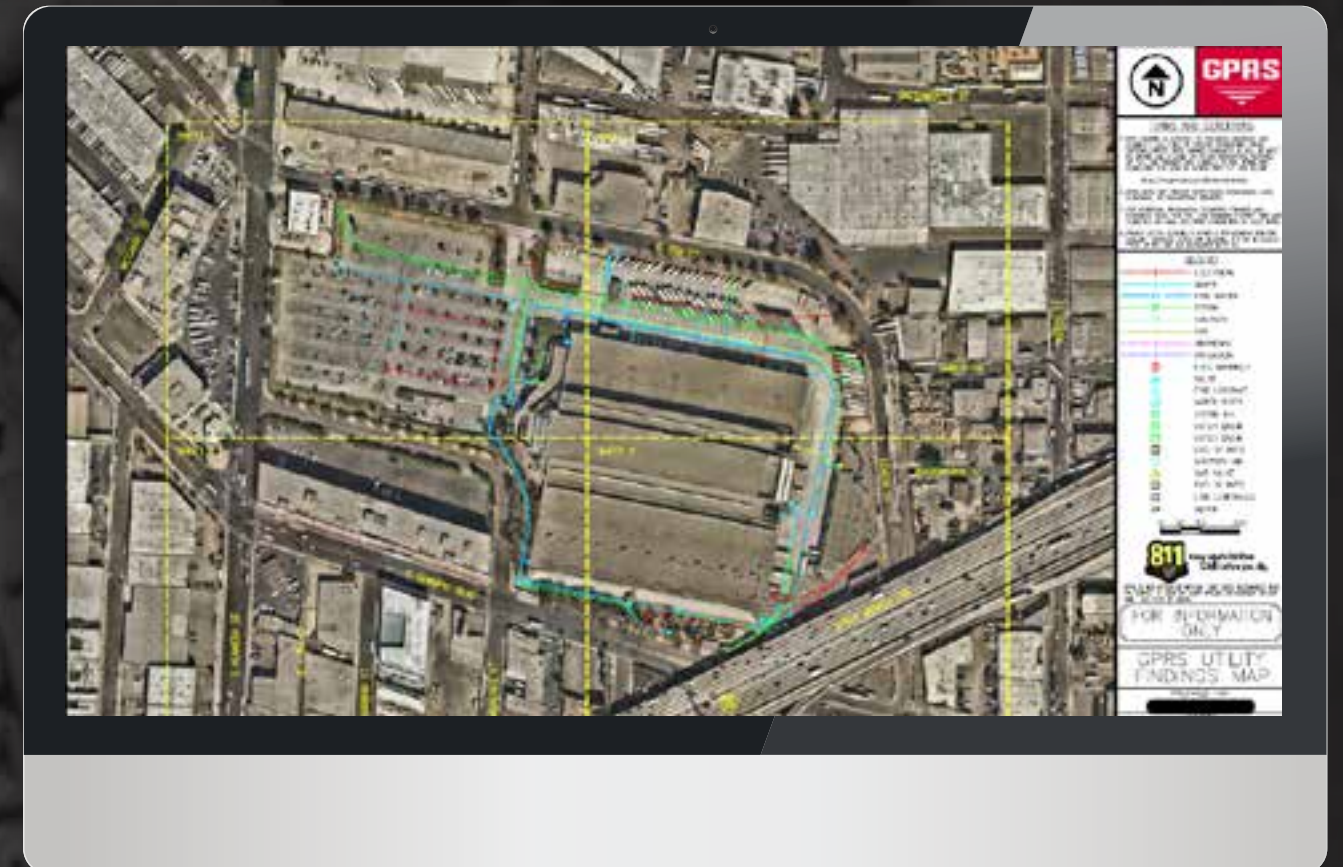
SOLUTION

- Utilize Video Pipe Inspection services to locate 12' culvert over 20' in depth.
- Utilizing Video Pipe Inspection to locate all sewer and storm lines onsite.
- GPRS National presence, servicing all project locations.
- National pricing and partnership agreement to create consistent pricing.



BENEFITS

- Known location of sewer and storm lines identified prior to mobilizing to site.
- Video recordings of all sewer and storm lines as well as reporting of defects located within the pipes.
- Safety – Keeping team safe while performing work onsite.





/// GPRS SERVICES

UTILITY LOCATING

Utility detection is critical to any construction project where subsurface excavation is planned to ensure the overall timely success of your project. To achieve a comprehensive and safe utility locate, a private utility locator must be utilized to mark buried facilities on private property. The use of proper training, multiple technologies, and a field-tested methodology are essential to properly locating all site utilities.



PRIVATE PROPERTY LOCATING



DRILLING & BORING CLEARANCE



FACILITY MAPPING



ONE CALL UTILITY LOCATING

GPRS exceeds industry performance when it comes to the accuracy of our utility locating. Our team of Project Managers can continue the support of your project by creating a One Call program for when your project transitions to the O&M phase.



“GPRS HAS SHOWN A DEDICATION TO THEIR CRAFT, AN IMPRESSIVE WORK ETHIC, AND MOST IMPORTANTLY, EXCEPTIONAL COMMUNICATION SKILLS.

DAVE HAZEL | ENERGY RENEWAL PARTNERS



DID YOU KNOW?



COMPLETED 50,000+
UTILITY PROJECTS IN 2021



/// GPRS SERVICES

CONCRETE IMAGING

Because concrete drilling comes with risk, GPRS Project Managers are equipped with multiple technologies to clear areas before core drilling and anchoring. Our scanning and imaging services can be completed on any surface, including concrete slabs, walls, columns, and beams. Upon completing the scanning process, you will have a clear layout of critical targets or impediments such as post-tension cables, rebar, beams, and conduits.

 **CONCRETE CORING APPLICATIONS**

 **PRE-PLANNING AND DESIGN**

 **SAW CUTTING APPLICATIONS**

 **STRUCTURAL ANALYSIS**

WHAT'S HIDDEN IN YOUR CONCRETE?

GPRS FINDS IT.



When GPRS places a **GREEN BOX** within a layout prior to cutting or coring concrete, we guarantee that area to be

FREE OF OBSTRUCTIONS

DID YOU KNOW?



**WE COMPLETED 25,000+
CONCRETE PROJECTS IN 2021**

**COMPLIMENTARY
KMZ & PDF MAPS**
WITH EVERY UTILITY LOCATE

COMPLIMENTARY ACCESS TO
SITEMAP
POWERED BY **GPRS**

READY TO PUT YOUR NEXT PROJECT ON THE MAP?

VISUALIZE YOUR
SUCCESS WITH GPRS.

/// GPRS SERVICES **MAPPING & MODELING**

GPRS can increase the level of communication and safety on your project by providing clear and understandable maps. GPRS provides complimentary KMZ and PDF maps with every utility locate. When you upgrade to Premier Maps and Models created by the **The GPRS Mapping & Modeling Team**, you are showing your commitment to keep your project safe, on time, and on budget.



MAPS (2D)

MAPS PLUS™

- Site Plan
- Floor Plan

MAPS PREMIUM™

- Hi-Res Site Plan
- Floor Plan with Linework

MAPS PREMIER™

- Hi-Res Site Plan with Dimensions
- Floor Plan with Linework and Dimensions

MODELS (3D)

MODELS PLUS™

- Virtual Tour
- Point Cloud
- Mesh Files

MODELS PREMIUM™

- 3D Model

MODELS PREMIER™

- 3D BIM Model
- Drone Point Cloud (LiDAR)

 **SITEMAP**
POWERED BY **GPRS**

CLOUD-BASED INFRASTRUCTURE MAPPING SOLUTION

 **MAP VIEWER**

 **DIGITAL PLAN ROOM**

DID YOU KNOW?
///

GPRS WORKS FOR
96%

**OF THE ENR TOP
50 CONTRACTORS**



/// GPRS SERVICES

LEAK DETECTION

GPRS specializes in all types of leak detection, including municipal, industrial, and residential. Our water loss specialists have the equipment to locate your leak and the expertise to provide many other insights into your water distribution system. GPRS does this by utilizing a variety of equipment paired with their industry-leading SIM process. The equipment and methods used include acoustic leak detectors, leak noise correlators, video pipe inspection, ground penetrating radar, and electromagnetic locating, among others.

 **ROUTINE WATER LOSS INSPECTIONS**

 **ACOUSTIC LEAK DETECTION**



“THE GPRS LEAK DETECTION TEAM SAVED THE DAY WHEN THEY IDENTIFIED AN UNDERGROUND WATER LEAK THAT WE COULDN'T LOCATE. THEIR EXPERT TEAM PINPOINTED THE LEAK QUICKLY SO WE COULD MAKE VITAL NECESSARY REPAIRS.

CRAIG ORLOWSKI | INSITE REAL ESTATE, LLC.



SUBSURFACE LEAKS HAPPEN. GPRS FINDS THEM.



VIRTUAL WALK THRU

The 3D views will allow your team to tour the site almost as if you were there yourself.

/// GPRS SERVICES

3D LASER SCANNING

Time is money. Traditional as-built drawings waste time because they are often inaccurate and out of date leading to unexpected issues and critical delays. When you choose to use as-built drawings created by GPRS TruePoint you can avoid time-consuming problems and ensure a solution that overcomes the usual as-built challenges of working with as-built drawings. Our 3D laser scanning services can provide the link between unknown existing conditions and a true digital twin.

BUILD AT THE SPEED OF INSIGHT

REDUCE INACCURATE CONSTRUCTION DOCUMENTS, CHANGE ORDERS & PROJECT DELAYS.



AS-BUILT CREATION



3D BIM MODELING



CLASH DETECTION/PREFABRICATION



MIXED REALITY DEVELOPMENT MODELS

VIEW YOUR INFRASTRUCTURE WITH SITEMAP.



SiteMap is a singular subsurface infrastructure mapping solution that allows users to experience their facility data with ease. SiteMap provides map data, subsurface utility information, and a common repository for facility artifacts. This geospatial solution also acts as an all-inclusive digital storage space for blueprints, as-built drawings, maintenance logs, permits, and more. The beauty of SiteMap is that it can geolocate every piece of information so the content can be located and cross-referenced on demand. SiteMap simplifies facility management by providing its users with a powerful all-in-one solution.

ORGANIZATION SIMPLIFIED

It's common for subsurface infrastructure data to be fragmented. SiteMap alleviates the obstacles that hinder effective organization, such as:

- DRAWINGS BEING STORED IN MULTIPLE PLACES
- MAINTAINING OUTDATED AS-BUILT DRAWINGS
- RETAINING PARTIAL OR INCOMPLETE SITE DATA



DIGITAL PLAN ROOM

The Digital Plan Room acts as the central repository for facility documents. These documents are directly viewable in the Map Viewer when appropriately tagged with the location information. The Digital Plan Room is a secure space to store essential and relevant facility documents.

- FILE STORAGE
- HISTORICAL DRAWINGS
- SITE PHOTOS
- DRONE FOOTAGE
- DIGITIZED BLUEPRINTS

ORGANIZE YOUR ASSETS

- ACCURATELY MAPPED
- DIGITALLY STORED
- EASILY ACCESSIBLE

VIEW SITEMAP IN YOUR
OFFICE OR ON YOUR
MOBILE DEVICE

MAP VIEWER

The Map Viewer makes viewing facility data easy as it allows the user to attach locational data to specific uploaded documents. This feature enables facility managers to track and locationally designate documents for reference quickly. Additionally, this makes sharing and updating location documentation a more fluid experience.

- VIEWABLE, SEARCHABLE MAPS
- 3D MODELING VIEWER
- TAG SITE FEATURES TO MAPS



JOIN US & THESE COMPANIES IN

GPRS **VISUALIZING
THE BUILT WORLD™**
ABOVE AND BELOW GROUND



“OVERRUNS ON COST CAN BLOW A PROJECT BUDGET. WHEN GPRS SCANS CONCRETE OR FOR UTILITIES ON OUR PROJECTS, IT HELPS US LIMIT UNFORESEEN CHANGE ORDERS OR REPAIR COSTS.”

MATT MORRIS, SWINERTON CONSTRUCTION | GENERAL SUPERINTENDENT



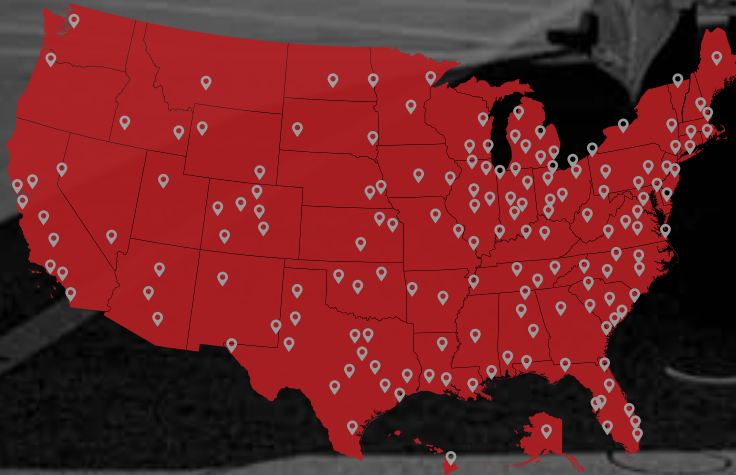
LET'S GET TO WORK

SCHEDULE A PROJECT

GPRS has an unmatched nationwide service network making it easy to find an expert Project Manager in your area. Please contact your local GPRS Project Manager for information, pricing, and scheduling needs.



/// **NATIONWIDE COVERAGE**



SCAN TO
FIND A



PROJECT
MANAGER
NEAR YOU



GPRS

MAKE SCHEDULING EASIER WITH THE GPRS APP.
GET IT HERE:

