

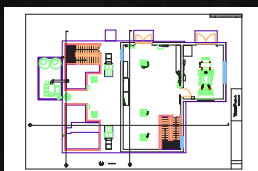


MODELS (3D)



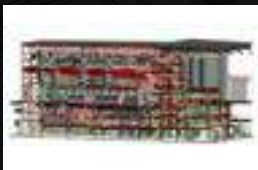
MODELS PLUS™

- Virtual Tour
- Point Cloud
- Mesh Files



MODELS PREMIUM™

- 3D Model



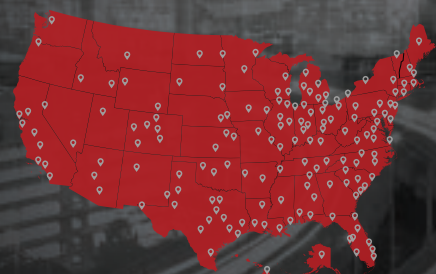
MAPS PREMIER™

- 3D BIM Model
- Drone Point Cloud (LiDAR)

LET'S GET TO WORK SCHEDULE A PROJECT

/// **NATIONWIDE COVERAGE**

GPRS has an unmatched nationwide service network making it easy to find an expert Project Manager in your area. Please contact your local GPRS Project Manager for information, pricing, and scheduling needs.



SCAN TO
FIND A



PROJECT
MANAGER
NEAR YOU

CORPORATE OFFICE info@gprsinc.com 1.866.914.4718



MAPPING & MODELING

GPRS can improve the level of communication and safety by providing clear, understandable maps, models, and drawings to take you through the entire life cycle of your project.

We provide complimentary KMZ and PDF maps with every utility locate. When you upgrade to Premier Maps and Models created by the GPRS Mapping & Modeling Team, you help to keep your project, **safe, on time, and on budget.**

MAPS (2D)



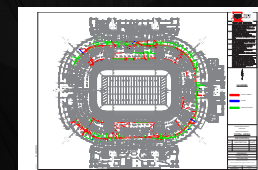
MAPS PLUS™

- Site Plan
- Floor Plan



MAPS PREMIUM™

- Hi-Res Site Plan
- Floor Plan with Linework



MAPS PREMIER™

- Hi-Res Site Plan with Dimensions
- Floor Plan with Linework and Dimensions



- ✓ TRAINING
- ✓ EQUIPMENT
- ✓ METHODOLOGY

The use of proper training, multiple technologies and a field-tested methodology are the key to a successful utility locate. Project Managers master all three components through the utilization of SIM Certification.

SIMSPEC.ORG



SEE YOUR
ENTIRE CAMPUS
WITH SITEMAP

SITE-MAP.COM

YOUR INFRASTRUCTURE
ACCURATELY MAPPED ■ DIGITALLY STORED ■ EASILY ACCESSIBLE

V1 10/22

READY TO PUT
YOUR NEXT
PROJECT
ON THE MAP?



**COMPLIMENTARY
KMZ & PDF MAPS
WITH EVERY UTILITY LOCATE**

MAPPING & MODELING

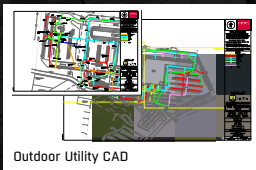
READY TO PUT YOUR NEXT PROJECT ON THE MAP?

VISUALIZE YOUR SUCCESS WITH GPRS

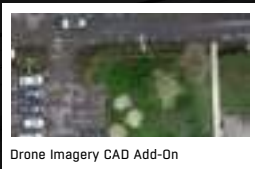
UTILITY LOCATING MAPS & MODELS



Outdoor Field Marking & GPS Mapping



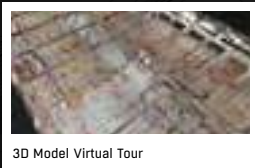
Outdoor Utility CAD



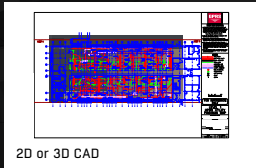
Drone Imagery CAD Add-On



Indoor Utility Markings



3D Model Virtual Tour



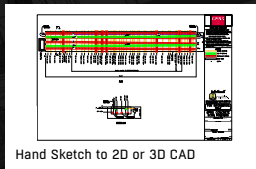
2D or 3D CAD

Tracking underground utilities is impossible without **accurate** and **thorough** documentation. While public utility locations are typically available upon request, private utilities remain unknown unless a private locator is called. GPRS locates utilities, marks their location, and collects GPS coordinates on those utilities.

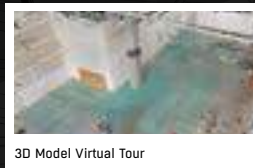
CONCRETE IMAGING MAPS & MODELS



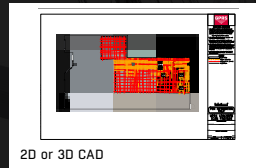
Concrete Markings



Hand Sketch to 2D or 3D CAD



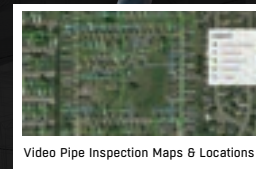
3D Model Virtual Tour



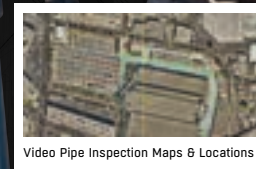
2D or 3D CAD

We provide **complimentary** high-resolution maps in the form of PDF, KMZ, and SHP files **with every outdoor utility locating project** we perform. These maps are vital for keeping an accurate record of utilities' locations for future construction work.

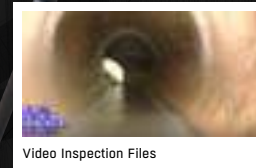
VIDEO PIPE INSPECTION MAPS & MODELS



Video Pipe Inspection Maps & Locations



Video Pipe Inspection Maps & Locations



Video Inspection Files

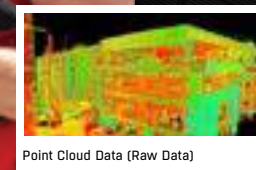


Video Inspection Files

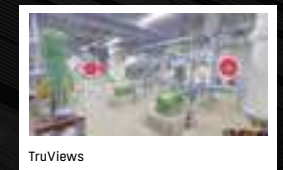
SCAN THE QR CODE TO VIEW
MORE MAPS & MODELS



3D LASER SCANNING MAPS & MODELS



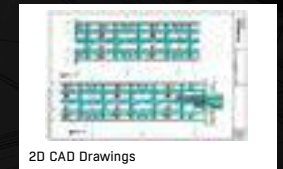
Point Cloud Data (Raw Data)



TruViews



3D Virtual Tour From Point Cloud



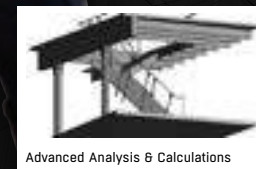
2D CAD Drawings



3D BIM Models



3D Mesh



Advanced Analysis & Calculations



Mixed Reality for Professional Sports Venues