



GPRS

WHAT'S UNDERNEATH MATTERS.™

STATEMENT OF QUALIFICATIONS





TABLE OF CONTENTS

02-03 /// THE GPRS VALUE/PROVEN ACCURACY
 04-05 /// HISTORY OF PERFORMANCE/NATIONAL FOOTPRINT
 06-07 /// SAFETY STATISTICS/RISK MANAGEMENT
 08-09 /// TEAM MEMBERS/PROJECT MANAGERS
 10-13 /// THE GPRS ACADEMY
 14-15 /// SUBSURFACE INVESTIGATION METHODOLOGY
 16-17 /// LIFE CYCLE SOLUTIONS/PROJECT CYCLE TIMELINE
 18-21 /// UTILITY LOCATING/CASE STUDY
 22-25 /// VIDEO PIPE INSPECTION/CASE STUDY
 26-29 /// CONCRETE IMAGING/CASE STUDY
 30-31 /// MAPPING & MODELING
 32-35 /// LEAK DETECTION/CASE STUDY
 36-39 /// 3D LASER SCANNING/CASE STUDY
 40-41 /// SITEMAP
 42-43 /// CUSTOM SERVICE PLANS/PARTNERSHIP PLUS
 44-45 /// JOIN US

/// THE GPRS STORY

Founded in 2001, GPRS is now the nation's largest private utility locator with Project Managers based in every primary market in the United States. Our services include Utility Locating, Concrete Scanning, Video Pipe Inspection, and Leak Detection.

With GPRS, clients can ensure that our rigorously trained Project Managers using state-of-the-art technology deliver the most accurate information. GPRS leads the industry – providing outstanding service and cutting-edge technology, keeping projects on time, reducing safety risks, and putting relationships with our clients first.

GPRS has completed hundreds of thousands of projects with over a **99.8%** accuracy rating. Join us in the pursuit of 100% subsurface damage prevention ■

IN PURSUIT OF **100%** SUBSURFACE DAMAGE PREVENTION

-  UTILITY LOCATING
-  VIDEO PIPE INSPECTION
-  LEAK DETECTION
-  MAPPING AND MODELING
-  CONCRETE IMAGING
-  3D LASER SCANNING

/// THE GPRS VALUE



NATIONWIDE SERVICE

We have team members in every major metropolitan area in the United States, ready to handle any project nationwide.



RAPID RESPONSE

Time is always critical in any construction project. We understand this and have developed our operations so we can be on site within 48 hours.



CONSULTATIVE APPROACH

Our Project Managers are trained to ask questions and provide you with answers. This consultative approach helps us quickly identify your subsurface issues and ensure we provide valuable solutions to keep your job moving.



PROVEN RESULTS

We deploy the best equipment operated by expert Project Managers. Since our inception, GPRS has completed hundreds of thousands of projects in North America with a 99.8%+ accuracy rating.

/// PROVEN ACCURACY

Since 2017, we have completed over 300,000 projects with a 99.8% accuracy rate along with a 99%+ approval rating according to our customer satisfaction survey. Historically, nearly 80% of our business is either repeat or referral. GPRS focuses on long-term performance and recognizes that repeatable accuracy will ensure customer satisfaction and business longevity ■

SINCE 2017 THERE HAS BEEN A
99.8% RATE
 OF ACCURACY
 OF THE **300,000+**
 PROJECTS COMPLETED



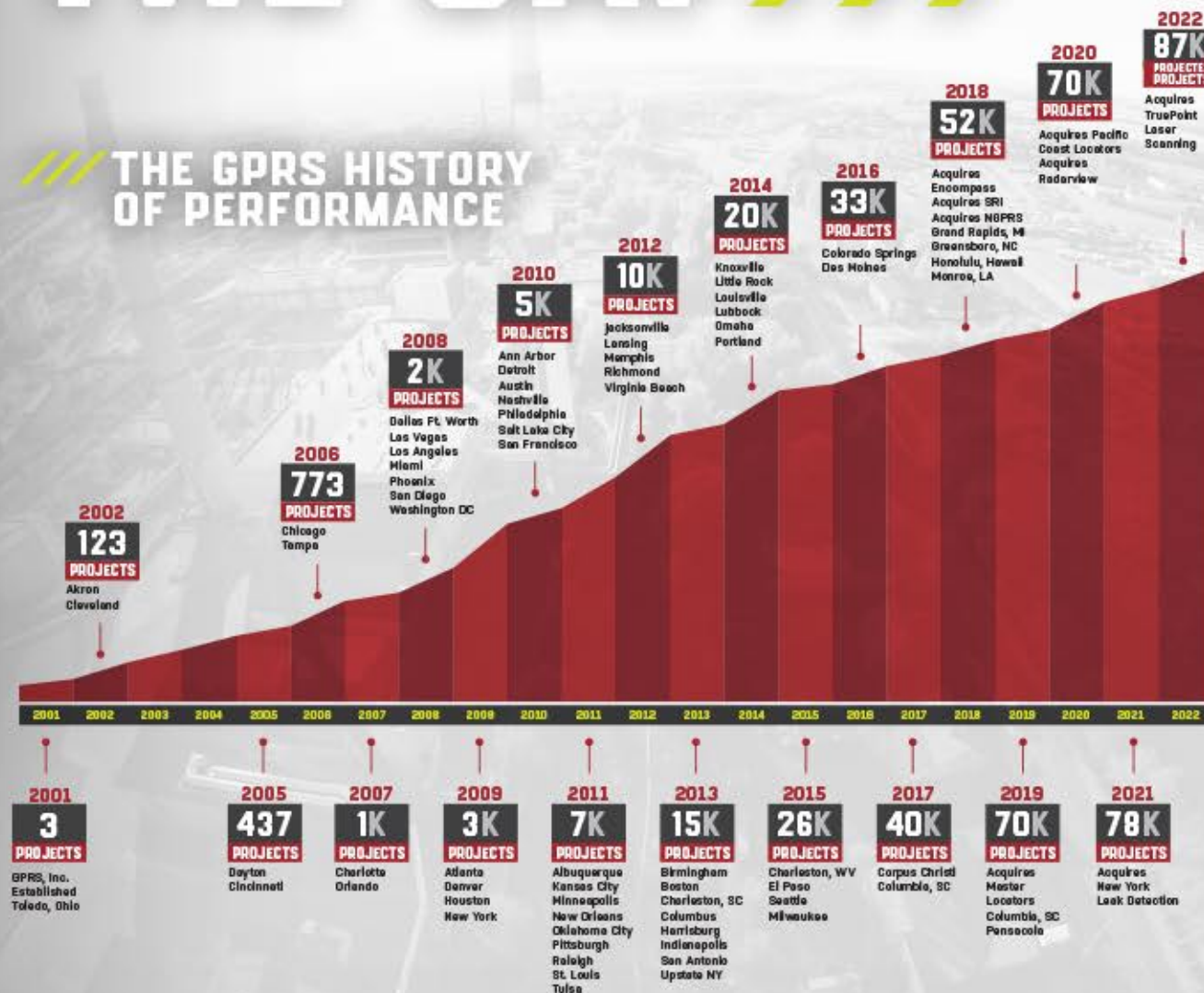
WIDENING THE GAP

THE GPRS NATIONAL FOOTPRINT

Ground Penetrating Radar Systems, LLC provides our services throughout all major metropolitan areas in the United States. Our footprint ensures we can offer rapid response to your job sites and projects, often within 24 hours. We have over 300 highly trained personnel that are able to commit to large projects, obscure geographic locations, and unique job site requirements ■



THE GPRS HISTORY OF PERFORMANCE



WIDENING THE GAP

Widening the Gap means that we aren't looking to the industry norms to dictate how well we perform. To push the industry forward, we want to widen the gap between our work and the industry standard.

DID YOU KNOW? **1 MILLION HOURS WORKED IN 2021**

DID YOU KNOW? **GPRS DROVE OVER 8.7 MILLION MILES IN 2021**

SAFETY

ALWAYS ON OUR RADAR

**SAFETY AND DAMAGE
PREVENTION ARE OUR
TOP PRIORITY.**

2021 SAFETY STATISTICS

Safety is one of our core values. Our safety focus has earned us an impressive record:

TOTAL MAN HOURS 1,000,000+	AVERAGE NUMBER OF EMPLOYEES 400+	EMR 0.47	LOST TIME INCIDENTS 0
--	--	--------------------	-------------------------------------

SAFETY TRAINING

We are firm believers in continuous safety education for all of our employees:



SAFETY PARTNERSHIPS

GPRS is proud to partner with several leading safety compliance organizations:



RISK MANAGEMENT

GPRS services reduce the risk for you, your team,
and your assets ■

- ⬆ BUDGET OVERRUNS
- ⌚ PROJECT DOWNTIME
- 🏠 PROPERTY DAMAGE
- 🗣 DAMAGED REPUTATION
- 🚑 INJURIES & ACCIDENTS

INSURANCE COVERAGES

GPRS is prepared to meet the insurance and safety demands
of the most rigorous project-specific requirements.

- Commercial general liability insurance policy: 1-million-dollar limit with a 10-million-dollar umbrella policy.
- Coverage includes products and completed operations.
- Commercial policies for Automobile Liability and Workers Compensation.
- Professional/Pollution Liability policy with a 5-million-dollar limit.

KEEP THE
PROJECT
ON TRACK



WHAT'S UNDERNEATH MATTERS.™

TEAM MEMBERS

GPRS is committed to providing opportunities and development for our people, who offer sensational service for our customers. The investment GPRS makes into its team members is rooted in our understanding that each team member is a crucial differentiator in our company's success.

TEAM DEVELOPMENT

Project Managers begin with a 3-month training program that marries classroom teaching and field mentorship. This program continues throughout their career in advanced field training courses. All field personnel are part of an industry-leading promotion track that measures their field accuracy, customer service, and professionalism. We invite them to join the GPRS Leadership Development Program, focusing on personal growth in leadership and business.

TEAM CHARACTERISTICS

The most critical component to our team members' work has always been their character. Each team member exhibits our core values both inside and outside the organization. When you combine personal character, team chemistry, and industry-leading competency, the result is a sensational service for our customers.

CORE VALUES



INTEGRITY



GROWTH MINDEDNESS



SAFETY



MUTUAL RESPECT



TEAMWORK



PROJECT MANAGERS

AT GPRS, WE REFER TO OUR FIELD TECHNICIANS AS PROJECT MANAGERS, BUT WHY?



START-TO-FINISH PROJECT MANAGEMENT

Our team members can assist your project from the scheduling and site walk phase through the reporting and billing phase. GPRS Project Managers are true professionals that deliver industry-leading customer service.



CLEAR & ACCURATE MARKINGS / DELIVERABLES

Our scan results are marked on the surface clearly and understandably, and we ensure all markings are discussed before leaving a job site. We also offer permanent records such as CAD and GPS satellite image overlays.



CLEAR COMMUNICATION

Our team members ask the right questions before arriving on site. While on-site, they will do both a pre-job walk and a post-job walk.



A CAREER, NOT A JOB

Our field personnel are not just technicians, this is why we refer to them as Project Managers. They work beside a client through the entire process, providing excellent service. This is their career, their craft, and their trade. The result? A better quality service.

WE HAVE **1,200+** YEARS OF FIELD EXPERIENCE

CONSISTENCY
EDUCATION
TRAINING
QUALITY
SAFETY
LEADERSHIP
ACCURACY

STARTS HERE

THE GPRS ACADEMY

The GPRS Academy leads the industry by providing a structured and comprehensive approach to equipping Project Managers to locate utilities and scan concrete. Our trainers give Project Managers the education they need through a classroom setting and a hands-on approach.



EXPERT INSTRUCTION

- GPRS Project Managers are taught by industry experts with decades of field experience.
- Trainees are taught how to interpret complex ground penetrating radar images.
- All training is conducted through an unparalleled utility locating and concrete imaging academy.

OUR TRAINING FACILITY

- Our Project Managers are thoroughly trained in our state-of-the-art, world-class training facility.
- Trainees are trained on a concrete training slab measuring over 3,000 square feet outfitted with post-tension cables, reinforcing, and conduits.
- This training facility includes a simulated indoor gas station so our team members can gain real-world experience while in a safe and controlled environment.

PRACTICAL APPLICATION

- Each Project Manager completes up to 3 months of rigorous training.
- This training includes shadowing in the field, executing the scanning process under the supervision of a trainer, and more.
- Our trainees leave the program with a greater than 99.8% subsurface scanning accuracy.

SUBSURFACE INVESTIGATION METHODOLOGY

- GPRS implements a rigorous subsurface damage prevention methodology, Subsurface Investigation Methodology, or SIM.
- The SIM Specification standard is the industry-leading, metrics-based guideline for underground locating contractors.
- All our field staff are SIM certified. They complete weeks of academy training in SIM 101 and 201.



AT GPRS, OUR TEAM MEMBERS ARE WORKING ON SOMETHING

BIG



INTRODUCING THE BIGGER, BETTER **GPRS ACADEMY**

For the past two decades, GPRS has been the standard in training and quality service. The desire to reach 100% Subsurface Damage Prevention pushed us to think beyond the standard manufacturer training that is typically included with the purchase of scanning equipment. With the launch of the GPRS Training School nearly 10 years ago, GPRS was able to Widen the Gap between us and the industry norm.

The combination of classroom training, mentorship, real-world training sites, test slabs, and training slabs have contributed to our scanning accuracy rate of 99.8%. But in our relentless pursuit of 100%, we had to raise the bar. With the completion of the GPRS Academy, that vision is one step closer to reality. This state-of-the-art training facility features:

- 3,200 sq ft continuous concrete training slab complete with real-world scenarios like post tension cables, rebar, electrical conduits, columns, and beams.
- Training slab can be sectioned off into 4 separate classrooms that allow for advanced training – each classroom progressing in difficulty.
- 3,000 sq ft indoor simulated gas station that is complete with USTs, buried utilities, light poles, and other related piping.
- Simulated elevator shaft complete with curving and terminating post tension cables, extra reinforcement, and densely spaced electrical conduits.
- 3,000 sq ft Slab-on-grade training area that is complete with conduits, reinforcement, shallow utilities and more.
- Video Pipe Inspection training area that features sewer and water lines, including sewer laterals for training with VPI cameras.



MATT ASTON CUTS THE RIBBON AT OUR NEW FACILITY



TRAINING SLAB PRE-POUR



TRAINING SLAB POST-POUR



TRAINING SLAB DURING A CLASS





/// SUBSURFACE INVESTIGATION METHODOLOGY

POWERING THE INDUSTRY STANDARD ///

Proper training, multiple technologies, and a field-tested methodology are the key to a successful utility locate. GPRS is a master of all three components by utilizing the SIM Specification.

✓ TRAINING

The industry standard recommends 8 hours as a minimum for training and 60 hours practicing GPR to become certified NDT Level I in Ground Penetrating Radar. In contrast, SIM requires 320 hours of mentorship in the field prior to 80 hours of classroom/hands-on training.

In addition, the classroom training reinforces what a technician learns in the field. This classroom setting also allows them to go deeper into the technical aspects and knowledge needed to perform their jobs at the highest level.

✓ EQUIPMENT

Subsurface Investigation Methodology (SIM) requires multiple technologies to be used in an investigation. With any investigation, more data points yield the best outcome. When SIM qualified technicians locate a subsurface target such as a pipe, utility, or reinforcing with more than one technology, it confirms the accuracy of the locate. This redundancy also reduces the likelihood of missing a buried target. Redundant results bear more data points; by locating pipes and other targets with different methods utilizing each tool's strengths and weaknesses, technicians reduce the risk of missing key site information.

✓ METHODOLOGY

The SIM specification is a tested process that allows technicians to acquire accurate and repeatable results. SIM is similar to a machine that requires multiple gears, all working in unison for it to function properly. One of the most critical gears and steps in the SIM process is the repeated methodology that technicians must know for each project.

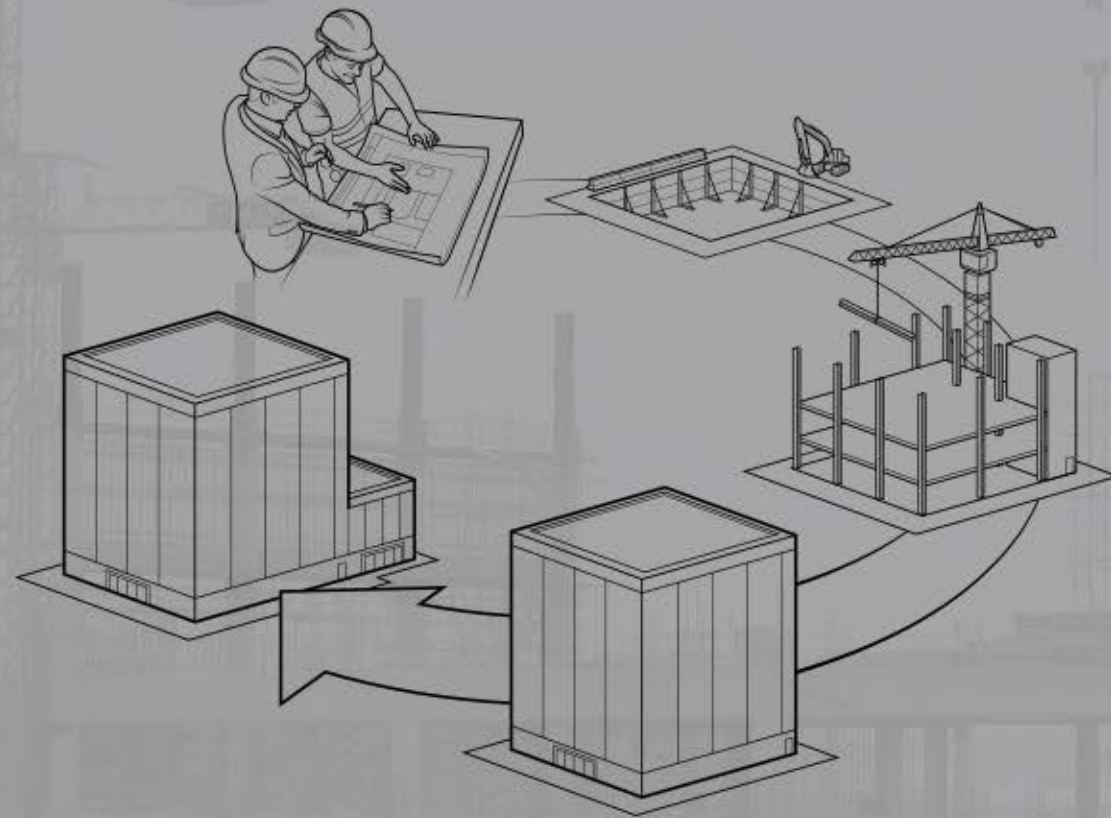
A solid, repeatable methodology guarantees that a concrete scanning, utility locating, or video pipe inspection job can be performed by a seasoned professional but also by a new-to-the-business technician. When the SIM methodology is followed, it allows technicians to achieve the same results regardless of their experience in the field.

SIMSPEC.ORG



DID YOU KNOW?  **99.6% ACCURACY RATE**
ON OVER 300,000 PROJECTS

PROJECT CYCLE SOLUTIONS



LIFE CYCLE SOLUTIONS

GPRS can provide solutions for the entire life cycle of your projects.

PLANNING DESIGN

We can provide information on underground utilities, known and unknown, before plans and development are finalized. GPRS utility locating and mapping services supplement existing maps to provide a more complete picture of existing underground assets, saving time and money ■

CONSTRUCTION

Prior to trenching, directional drilling, and other excavation work during the construction and renovation of subsurface infrastructure, it's critical to pinpoint underground assets to develop a plan for safe crossing. GPRS will provide the accurate information needed to complete the project safely ■

O&M/REMODEL

Construction and renovations typically require subsurface excavations. GPRS is well equipped to perform one-call locates for public and private property assets. As a project evolves, we can continue to provide support as we keep detailed reports of every project we complete ■

GPRS PROJECT CYCLE TIMELINE

CGA/DIRT 2020

468,000 LINE STRIKES

■ Utility strike every 62 seconds (public jobs or jobs reported)

\$30 BILLION IN DAMAGES (Direct and Indirect)

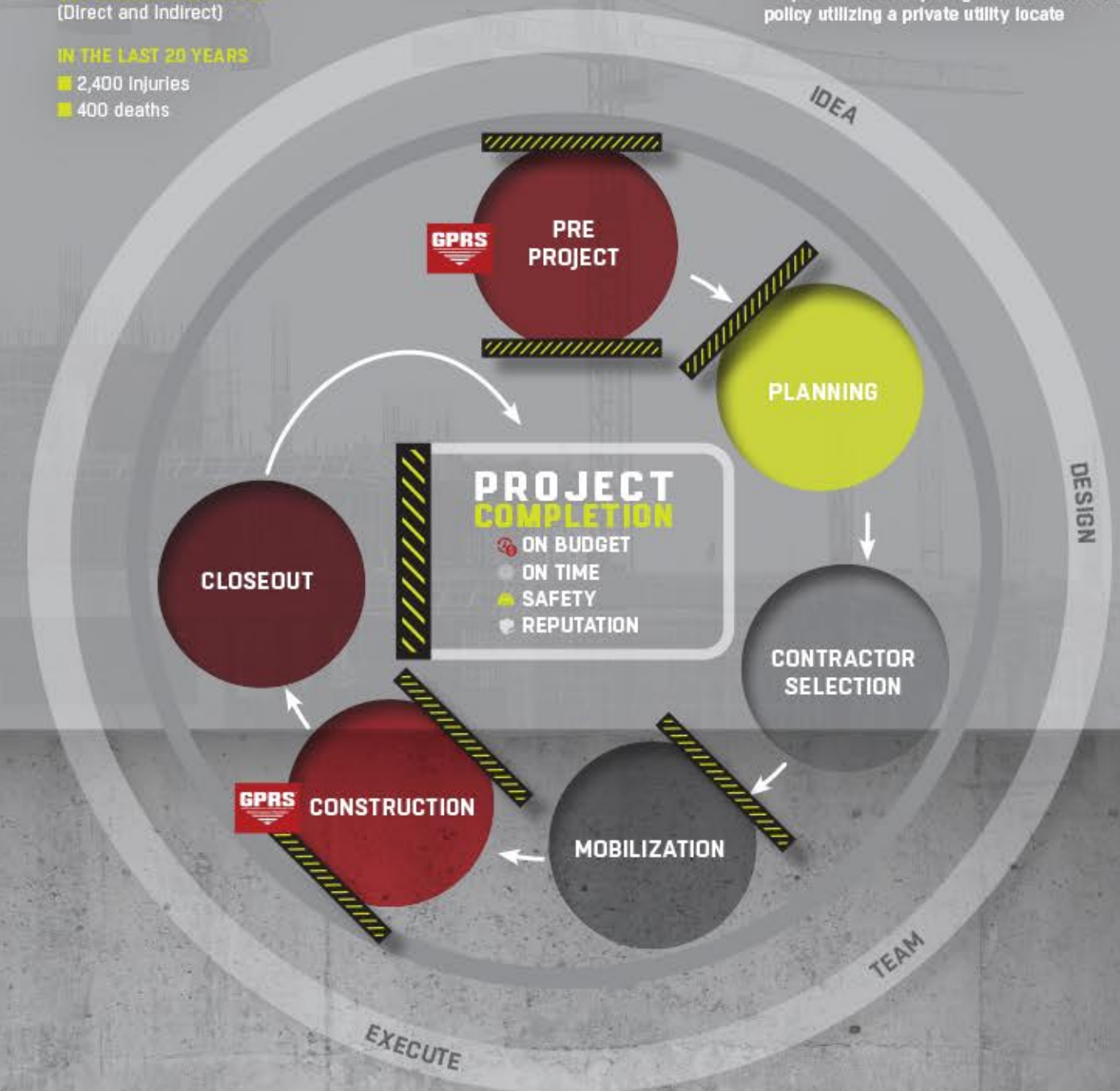
IN THE LAST 20 YEARS

■ 2,400 Injuries
■ 400 deaths

ROOT CAUSE

- Insufficient dig policy
- Mismarked utilities
- No locate ticket completed

Only 35% have adopted ground disturbance policy utilizing a private utility locate



WHAT IS **YOUR** GROUND DISTURBANCE POLICY?



/// GPRS SERVICES

UTILITY LOCATING

Utility detection is critical to any construction project where subsurface excavation is planned to ensure the overall timely success of your project. To achieve a comprehensive and safe utility locate, a private utility locator must be utilized to mark buried facilities on private property. The use of proper training, multiple technologies, and a field-tested methodology are essential to properly locating all site utilities.



PRIVATE PROPERTY LOCATING



DRILLING & BORING CLEARANCE



FACILITY MAPPING



ONE-CALL UTILITY LOCATING

GPRS exceeds industry performance when it comes to the accuracy of our utility locating. Our team of Project Managers can continue the support of your project by creating a one-call program for when your project transitions to the O&M phase.

“GPRS HAS SHOWN A DEDICATION TO THEIR CRAFT, AN IMPRESSIVE WORK ETHIC, AND MOST IMPORTANTLY, EXCEPTIONAL COMMUNICATION SKILLS.

DAVE HAZEL | ENERGY RENEWAL PARTNERS

NEW
TRENDS
IN
UTILITY
LOCATING

DID YOU KNOW?



COMPLETED 50,000+
UTILITY PROJECTS IN 2021

/// A GPRS CASE STUDY 01

CUSTOMER:

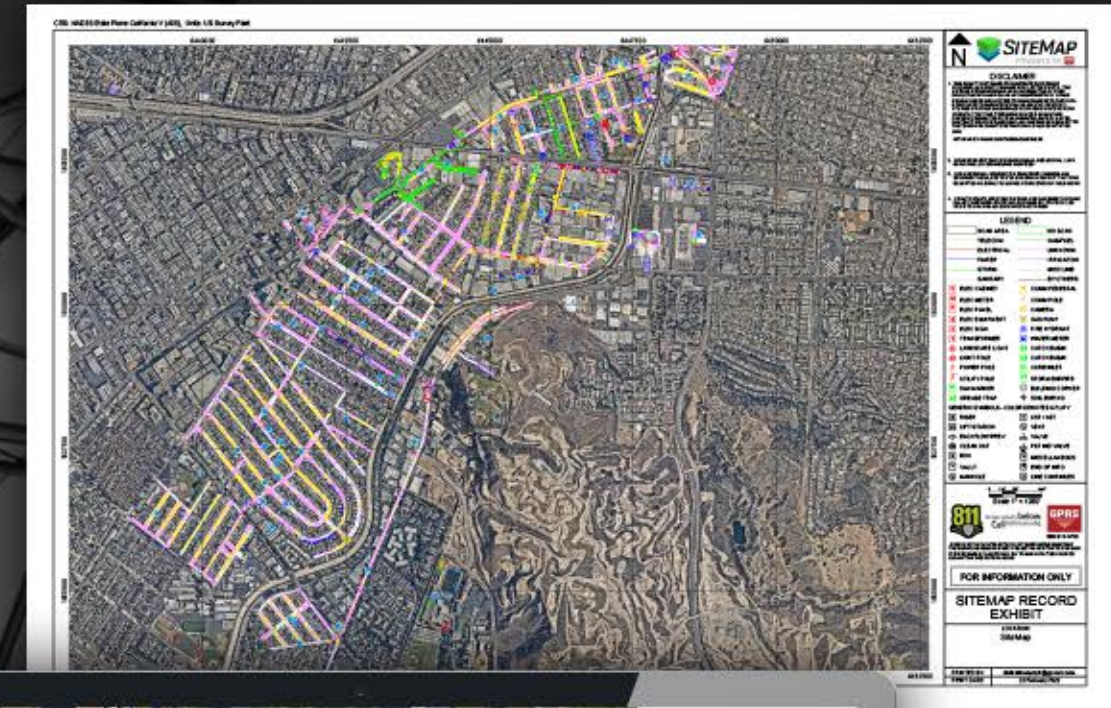
Team Fishel

TASK:

Installing new power utility through directional drilling.

PROJECT APPLICATION:

Team Fishel has been contracted by Dominion Energy to complete installation for new power distribution utilities throughout the VA market.



PROBLEM

- Public locates have not been reliable and completed onsite. 3rd party locator that was being utilized was not providing adequate locates, still resulting in line strikes.
- Line strikes were occurring on the project, causing delays, additional expenses, and damage to the residential homes on the project.

SOLUTION

- **National Standard** – SIM specification for GPRS Project Managers achieving 99.8% accuracy.
- Utilizing GPRS for private locates has helped identify unknown utilities onsite.
- GPRS has dedicated multiple team members to expedite response and create efficiencies.

BENEFITS

- Known location of utilities identified prior to mobilizing to site through mapping capabilities and deliverables.
- **Project Savings** – No damages to utilities, keep project on track from design to execution phase of project.
- Team Fishel has increased their productivity and remain in good standings with Dominion Energy for project renewals.
- **Safety** – Keeping team safe while performing work onsite.

“THE FEEDBACK FROM MY TEAM IS OVERWHELMINGLY POSITIVE. KEEP UP THE GOOD WORK!”

JOHN PALLADINO | AREA MANAGER | TEAM FISHEL



/// GPRS SERVICES



VIDEO PIPE INSPECTION

UTILITY LOCATING
VIDEO PIPE INSPECTIONS
CONCRETE SCANNING
REPORTS & DRAWINGS
VACUUM EXCAVATION

Video Pipe Inspection (CCTV) is a sewer inspection service using industry-leading video cameras to prevent problems by inspecting underground water, sewer lines, and lateral pipelines. Our NASSCO certified technicians can locate clogs, investigate cross bores, find structural faults and damages, and conduct lateral sewer line inspections.

“YOUR TEAM WAS UNBELIEVABLY HELPFUL AND RESPONSIVE. EVERY TIME THAT WE REQUEST GPRS VIDEO PIPE SERVICES, YOU TAKE CARE OF BUSINESS.

JORGE RABANAL | SWINERTON

BREAKS, DEFECTS & CROSS BORES.

GPRS FINDS THEM.

-  CCTV PIPE INSPECTIONS
-  CROSS BORE MITIGATION
-  MAINLINE INSPECTIONS
-  LATERAL INSPECTIONS
-  MANHOLE INSPECTIONS
-  UTILITY LOCATING



DID YOU KNOW?

GPRS WORKS FOR
96%



OF THE ENR TOP
100 CONTRACTORS

/// A GPRS CASE STUDY 02

GPRS OFFERS COMPREHENSIVE NASSCO REPORTS WITH EVERY VIDEO PIPE INSPECTION.

TASK:

Contaminated Groundwater Infiltration.

PROBLEM

- The client requested us to locate and inspect the storm sewer system, including potential laterals at a site with known soil and groundwater contamination.
- There was no known documentation/maps of the storm sewer system or potential laterals.
- The client identified higher contaminant concentrations at the storm sewer outfall than at upstream catch basins.

SOLUTION

- We utilized our VPI services to locate and map all storm sewer lines, laterals, and flow direction to the outfall.
- GPRS can accurately locate and map pipes using lateral launch cameras, robotic CCTV crawlers, and push cameras.
- We identified the area of groundwater intrusion into the storm sewer system, which assisted in determining which portion of the system needed to be repaired.

BENEFITS

- **On Time:** Due to our rapid response, we kept the project moving, reducing downtime.
- **On Budget:** GPRS protected the client's budget by preventing expensive and unnecessary excavations.
- **Safety:** GPRS provided accurate storm sewer locations and depths as well as the area the contaminated groundwater intrusion was identified. The client was able to dig safely, repair the line and eliminate the contaminated groundwater infiltration.
- **Reputation:** By preventing the client from using a trial-and-error approach, they can quickly and accurately deliver their results to their customers.
- GPRS provides PDF and KMZ files for accurate storm sewer infrastructure maps.

VIDEO PIPE INSPECTION
CONCRETE SCANNING
REPORTS & DRAWINGS





/// GPRS SERVICES

CONCRETE IMAGING

Because concrete drilling comes at a risk, GPRS Project Managers are equipped with multiple technologies to clear areas before core drilling and anchoring. Our scanning and imaging services can be completed on any surface, including concrete slabs, walls, columns, and beams. Upon completing the scanning process, you will have a clear layout of critical targets or impediments such as post-tension cables, rebar, beams, and conduits.

CONCRETE CORING APPLICATIONS

PRE-PLANNING AND DESIGN

SAW CUTTING APPLICATIONS

STRUCTURAL ANALYSIS

WHAT'S HIDDEN IN YOUR CONCRETE?

GPRS FINDS IT.



When GPRS places a **GREEN BOX** within a layout prior to cutting or coring concrete, we guarantee that area to be

FREE OF OBSTRUCTIONS

DID YOU KNOW?



WE COMPLETED **25,000+**
CONCRETE PROJECTS IN 2021

READY TO PUT YOUR NEXT PROJECT ON THE MAP?

VISUALIZE YOUR
SUCCESS WITH GPRS.



/// GPRS SERVICES

MAPPING & MODELING

GPRS can increase the level of communication and safety on your project by providing clear and understandable maps. GPRS provides complimentary kmz and pdf maps via with every utility locate. When you upgrade to Premier Maps and Models created by the **The GPRS Mapping & Modeling Team**, you are showing your commitment to keep your project safe, on-time and on-budget.



**COMPLIMENTARY
KMZ & PDF MAPS**
WITH EVERY UTILITY LOCATE

COMPLIMENTARY ACCESS TO



MAPS (2D)

MAPS PLUS™

- Site Plan
- Floor Plan

MAPS PREMIUM™

- Hi-Res Site Plan
- Floor Plan with Linework

MAPS PREMIER™

- Hi-Res Site Plan with Dimensions
- Floor Plan with Linework and Dimensions

MODELS (3D)

MODELS PLUS™

- Virtual Tour
- Point Cloud
- Mesh Files

MODELS PREMIUM™

- 3D Model

MODELS PREMIER™

- 3D BIM Model
- Drone Point Cloud (LIDAR)



CLOUD-BASED INFRASTRUCTURE MAPPING SOLUTION

MAP VIEWER

DIGITAL PLAN ROOM

DID YOU KNOW?

GPRS WORKS FOR

96%

OF THE ENR TOP
50 CONTRACTORS



/// GPRS SERVICES

LEAK DETECTION

GPRS specializes in all types of leak detection, including municipal, industrial, and residential. Our water loss specialists have the equipment to locate your leak and the expertise to provide many other insights into your water distribution system. GPRS does this by utilizing a variety of equipment paired with their industry-leading SIM process. The equipment and methods used include acoustic leak detectors, leak noise correlators, video pipe inspection, ground penetrating radar, and electromagnetic locating, among others.

 ROUTINE WATER LOSS INSPECTIONS

 ACOUSTIC LEAK DETECTION



“THE GPRS LEAK DETECTION TEAM SAVED THE DAY WHEN THEY IDENTIFIED AN UNDERGROUND WATER LEAK THAT WE COULDN'T LOCATE. THEIR EXPERT TEAM PINPOINTED THE LEAK QUICKLY SO WE COULD MAKE VITAL NECESSARY REPAIRS.

CRAIG ORLOWSKI | INSITE REAL ESTATE, LLC.



SUBSURFACE LEAKS HAPPEN. GPRS FINDS THEM.

/// A GPRS CASE STUDY 04

CUSTOMER:

Insite Real Estate (Willow Run Plant, Ypsilanti, MI)

TASK:

To pinpoint a leak in their fire suppression system that had been leaking for close to 11 months.

PROJECT APPLICATION:

Use of the Leak Noise Amplification System (DXMic/S30 listening devices), and the Leak Noise Correlator (Tri Corr Touch Correlator) to successfully pinpoint the leak.

PROBLEM

■ For close to 11 months this fire loop was losing 1 gallon per second. They had multiple jockey pumps constantly running to keep the pressure up to 150 psi.

SOLUTION

■ We listened to every contact point (hydrant, piv, valve, meter pit, etc.) and concluded that the noise was predominately near two hydrants. We correlated to the pipe and pinpointed the leak on the sidewalk.

BENEFITS

■ The customer was able to dig only where the leak was located, instead of digging up the entire fire loop or a certain section of the pipe. Another benefit was they were able to dig down, repair the leak and not lose anymore water or money.



“THE GPRS LEAK DETECTION TEAM LOCATED AN UNDERGROUND WATER LEAK THAT WE WERE HAVING TROUBLE LOCATING. THEIR TEAM PINPOINTED THE LEAK LOCATION SO WE COULD MAKE THE NEEDED REPAIRS.

CRAIG ORLOWSKI | INSITE REAL ESTATE, LLC.





VIRTUAL WALK THRU

The 3D views will allow your team to tour the site almost as if you were there yourself.

/// GPRS SERVICES

3D LASER SCANNING

Time is money. Traditional as-built drawings waste time; often being old and inaccurate, leading to unexpected issues and critical delays. When you choose to use as-built drawings created by TruePoint you can avoid time-consuming issues and ensure a solution to all common challenges of working with as-built drawings. Our 3D laser scanning services can provide the link between unknown existing conditions and a true digital twin.

BUILD AT THE SPEED OF INSIGHT

REDUCE INACCURATE CONSTRUCTION DOCUMENTS, CHANGE ORDERS & PROJECT DELAYS.



AS-BUILT CREATION



3D BIM MODELING



CLASH DETECTION/AVOIDANCE



AERIAL DRONE VIDEO AND PHOTOGRAMMETRY

/// A GPRS CASE STUDY 05

CUSTOMER:

SPI Engineering

TASK:

3D laser scan a Water Treatment Plant and deliver raw point cloud data to the Engineering Firm.

PROJECT APPLICATION:

SPI Engineering was generating construction drawings to expand an existing Water Treatment Plant.



PROBLEM

- No as-built drawings existed for the Water Treatment Plant. The firm needed accurate field conditions to create new layouts and plan for the facility expansion.
- Exact dimensions were required to plan modifications and fabricate pipe.
- The Engineering Firm was located in California, the Water Treatment Plant was located in Texas. It was important that they had accurate information digitally to begin design planning.



SOLUTION

- Using a Leica ScanStation, TruePoint's project manager completed 40 laser scans of the building to capture architectural, structural and MEP features.
- The client received a colored point cloud in ReCap (.rcp files and related supporting files) and JetStream Viewer files.



BENEFITS

- Laser scanning is an extremely efficient and accurate way to gather data necessary to put together construction drawings of a building or space.
- 3D laser scanning eliminated the firm's travel to the Water Treatment Plant. In one day on site, enough scans were taken to create a complete colored point cloud of the space.
- 3D laser scan data provided the Engineering Firm the critical tie points on top tanks and lines, information that was crucial to the expansion.



I HAVE USED 3D POINT CLOUDS FOR MANY YEARS. I USE THE RAW POINT CLOUD DATA TO DO MY LAYOUTS ACCURATELY TO THE FIELD CONDITIONS."

MIGUEL SANCHEZ | CAD DESIGNER
SPI ENGINEERING

VIEW YOUR INFRASTRUCTURE WITH SITEMAP.



SiteMap is a singular subsurface Infrastructure mapping solution that allows users to experience their facility data with ease. SiteMap provides map data, subsurface utility information, and a common repository for facility artifacts. This geospatial solution also acts as an all-inclusive digital storage space for blueprints, as-built drawings, maintenance logs, permits, and more. The beauty of SiteMap is that it can geolocate every piece of information so the content can be located and cross-referenced on demand. SiteMap simplifies facility management by providing its users with a powerful all-in-one solution.



ORGANIZATION SIMPLIFIED

It's common for subsurface Infrastructure data to be fragmented. SiteMap alleviates the obstacles that hinder effective organization, such as:

- DRAWINGS BEING STORED IN MULTIPLE PLACES
- MAINTAINING OUTDATED AS-BUILT DRAWINGS
- RETAINING PARTIAL OR INCOMPLETE SITE DATA



DIGITAL PLAN ROOM

The Digital Plan Room acts as the central repository for facility documents. These documents are directly viewable in the Map Viewer when appropriately tagged with the location information. The Digital Plan Room is a secure space to store essential and relevant facility documents.

- FILE STORAGE
- HISTORICAL DRAWINGS
- SITE PHOTOS
- DRONE FOOTAGE
- DIGITIZED BLUEPRINTS

ORGANIZE YOUR ASSETS

- ACCURATELY MAPPED
- DIGITALLY STORED
- EASILY ACCESSIBLE

VIEW SITEMAP IN YOUR
OFFICE OR ON YOUR
MOBILE DEVICE

MAP VIEWER

The Map Viewer makes viewing facility data easy as it allows the user to attach locational data to specific uploaded documents. This feature enables facility managers to track and locationally designate documents for reference quickly. Additionally, this makes sharing and updating location documentation a more fluid experience.

- VIEWABLE, SEARCHABLE MAPS
- 3D MODELING VIEWER
- TAG SITE FEATURES TO MAPS



BEYOND BUSINESS AS USUAL

/// GPRS CUSTOM SERVICE PLANS

Rather than send a rigid rate sheet to prospective clients, GPRS can create a customized service plan. We consider our industry experience, national footprint, and operational/scheduling capacity to craft a customized plan just for you.

SCHEDULING



With one single point of contact for your company, GPRS can schedule utility locating, video pipe inspection, and concrete scanning projects for your site with one call.

PRICING



GPRS understands that clear, understandable, and consistent pricing is a big deal. While we can provide consistent pricing nationwide, we can craft a cost structure that makes sense for the scope of work.

APPROACH



Every campus, site, and facility have different challenges. Since our inception, GPRS has completed hundreds of thousands of projects and relies on that experience when crafting a site-specific plan for safety, scanning, and reporting.

/// GPRS PARTNERSHIP PLUS

We're excited to unveil our latest service program, **GPRS Partnership Plus™**.

GPRS Partnership Plus is an exclusive service agreement and is only available to our most valuable clients. You'll receive premium benefits and services when choosing GPRS Partnership Plus.

Join us in the pursuit of 100% subsurface damage prevention.



**PARTNERSHIP
PLUS**



GPRS WORKS FOR

DID YOU KNOW?

92%

OF THE ENR TOP
50 CONTRACTORS



JOIN US & THESE COMPANIES IN THE PURSUIT OF **100%** SUBSURFACE DAMAGE PREVENTION

“OVERRUNS ON COST CAN BLOW A PROJECT BUDGET. WHEN GPRS SCANS CONCRETE OR FOR UTILITIES ON OUR PROJECTS, IT HELPS US LIMIT UNFORESEEN CHANGE ORDERS OR REPAIR COSTS.

MATT MORRIS, SWINERTON CONSTRUCTION | GENERAL SUPERINTENDENT



LOCKHEED MARTIN



AECOM

Jacobs



Kiewit

Turner



LET'S GET TO WORK

SCHEDULE A PROJECT

GPRS has an unmatched nationwide service network making it easy to find an expert Project Manager in your area. Please contact your local GPRS Project Manager for information, pricing, and scheduling needs.



NATIONWIDE COVERAGE



SCAN TO
FIND A



PROJECT
MANAGER
NEAR YOU



MAKE SCHEDULING EASIER WITH THE GPRS APP.
GET IT HERE:

