

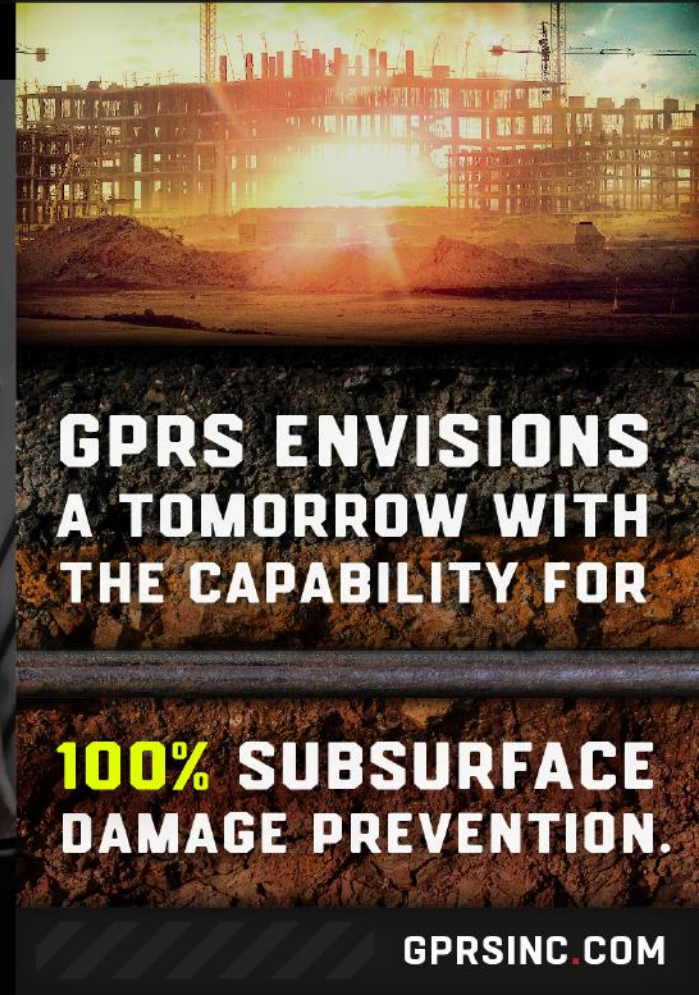


LET'S GET TO WORK
 **SCHEDULE A PROJECT**

TYLER FUNDERBURG

 Tyler.Funderburg@gprsinc.com  **936.203.9314**

CORPORATE OFFICE  info@gprsinc.com  **1.866.914.4718**



THE GPRS VALUE



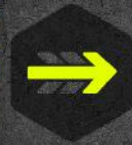
SAFETY

Our services prevent you from experiencing risk in the forms of budget overruns, damaged reputation, project down time, property damage, injuries, and accidents.



QUALITY

GPRS boasts an industry-leading accuracy rate of over 99.8% on over 70,000 projects, just last year. We are in pursuit of 100% subsurface damage prevention.



CONSISTENCY

How do we ensure the same quality on every one of our thousands of projects? The implementation and teaching of the SIM Specification at the GPRS Training School.



AVAILABILITY

As the largest company of our kind, GPRS is able to quickly mobilize to your site no matter the location. We have SIM-trained Project Managers in a city near you.



PRICING

GPRS commits to the highest quality on every project, not a tiered pricing system that sacrifices quality or accountability. You always receive the best value possible.

WHY PROJECT MANAGERS?



START-TO-FINISH PROJECT MANAGEMENT

Our team members can assist your project from the scheduling and site walk phase all the way through the reporting and billing phase. GPRS Project Managers are true professionals that deliver industry-leading customer service.



CLEAR COMMUNICATION

Our Team Members ask the right questions prior to arriving on site. While on site they will do a pre-job walk and also a post-job walk.



CLEAR & ACCURATE MARKINGS/DELIVERABLES

Our inspection results are clearly communicated in a detailed NASSCO report. This report provides specific details regarding exactly what took place on our job site. This includes a video file of the inspection results.



A CAREER, NOT A JOB

Our field personnel are not just technicians. This is their career, their craft and their trade. The result? A better quality service.

**GPRS ENVISIONS
A TOMORROW WITH
THE CAPABILITY FOR**

**100% SUBSURFACE
DAMAGE PREVENTION.**

GPRSINC.COM



DRONE SERVICES

First, GPRS covered the ground and now we're taking to the skies with our newly offered drone imagery services! Our state-of-the-art drones, equipped with an array of cameras, have the ability to identify malfunctions that impact facility performance, in addition to void detection, electrical inspection, and UAS magnetic imaging.

WHY DRONE INSPECTIONS?

- ✓ KEEP PEOPLE SAFE
- ✓ DETAILED INFORMATION
- ✓ DIFFICULT TO REACH LOCATIONS
- ✓ SAVE TIME & MONEY
- ✓ KEEP OPERATIONS ON TIME

GPRS IS ABLE TO PROVIDE SOLUTIONS FOR THE ENTIRE LIFE CYCLE OF YOUR RENEWABLE ENERGY PROJECT.



PLANNING & DESIGN



CONSTRUCTION



OPERATIONS/MAINTENANCE

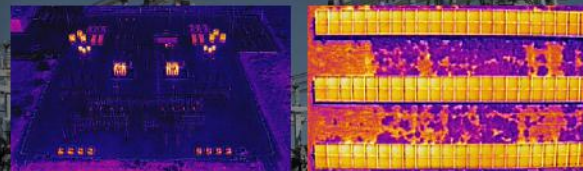


LET'S GET TO WORK



UAS THERMOGRAPHY

Use industry-leading infrared imaging technology and thermal drone cameras to spot, inspect, and document damaged solar panels. In addition, use this aerial thermography process to locate and detect near surface voids below certain structures including culverts, roads, sidewalks, and other concrete slabs ■



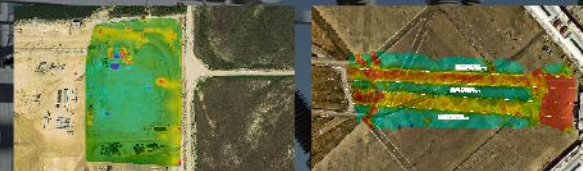
BUILDING FACADE IMAGERY

For traditional façade inspections, structural engineers would have to effectively erect very complex and time-consuming scaffolding systems, swing stages, and bucket trucks to look at the facade of the targeted building. Now with GPRS' building façade drone imagery service, clients can utilize our infrared aerial drones to inspect external faults and building weak points, capturing areas that top-down photography is unable to see ■



UAS MAGNETOMETRY

GPRS' new UAS Magnetic Imagery utilizes magnetometer equipped drones to find abandoned oil well heads to prevent severe fires or damages before breaking ground on your solar farm. This includes other subsurface hazards including abandoned wells, pipelines, underground tanks, UXO, and more ■



AERIAL SITE IMAGERY

By utilizing GPRS drone services, our clients are able to successfully view, inspect, and map their facility or project site. When we give clients an aerial image of their facility, they are getting an up to date/real-time image of their campus, eliminating the need to rely on outdated, online satellite maps and imagery. When combined with accurate as-built utility maps, our aerial imagery will ensure the most up to date maps available ■



UTILITY LOCATING

To ensure the overall timely success of your project, utility detection is critical to any construction project where subsurface excavation is planned. If this critical first step is ignored, the risk for injury increases, budget overruns can multiply and your schedule can be delayed.



VIDEO PIPE INSPECTION

Video Pipe Inspection (CCTV) is a service used to inspect underground water, sewer and lateral pipelines. VPI is a great tool for investigating cross-bores, structural faults and damages, and lateral line inspection.



MAPPING & MODELING

As-built utility maps, structural as-built drawings, and facility maps are actually meant to be "as-intended" drawings as the construction process or renovations can cause deviations to the original plan. GPRS can create a comprehensive facility map that contains precise as-built conditions – so you know exactly what exists on your property.