

**Lyndhurst
Primary
School**

Year 6 at Lyndhurst

Welcome!



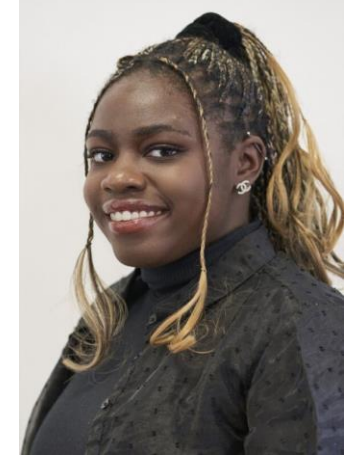
Helena Savvides-
Zambezi class teacher
& Year 6 Lead



Eleanor Hobbs-
Mississippi class teacher



Ms Fadayomi –
SEND teaching
assistant



Miss Rowe-
SEND teaching
assistant



Maureen Bennett-
Deputy,
Year 6 Maths Teacher



Miss Rita –
SEND teaching
assistant



Curriculum Map

	AUTUMN TERM		SPRING TERM		SUMMER TERM	
	1 ST HALF	2 ND HALF	1 ST HALF	2 ND HALF	1 ST HALF	
ENGLISH	Some Places More Than Others Poetry Class Read: Better Late Than Never	The Last Bear Story Class Read: In Flanders Fields	Suffragettes Persuasive speech, newspaper report Class Read: The Boy who Made Everyone Laugh	Stonewall Descriptive writing Class Read: The Unforgotten Coat	Boy in The Tower Story Class Read: Windrush Child	



Trips, Visits & Key Dates

- School Journey and Secondary School transition meeting–
Wednesday 13th September, 5:45 pm
- Trip to the Imperial War Museum– Wednesday September 20th
- Class assemblies: Zambezi – November, Mississippi– January
- Parent Consultations (parents' evening) 11th & 12th October
- School Journey – Week of 15th July



Student Planners

HOW TO USE THIS BOOK...



Why is READING so important?

Evidence suggests that children who read for enjoyment every day develop a broader vocabulary, increased general knowledge and a better understanding of other cultures. They also perform better in tests.

In fact, reading for pleasure is more likely to determine whether a child does well at school than their social or economic background.

That's why at Lyndhurst, as part of our plan to develop a love of reading we ask that everyone reads at home daily.

Daily Reading at Lyndhurst

Lyndhurst students should be reading for a minimum of 10 minutes every day. After they have read, they should write a reflection in their school planner—an adult can write for them if necessary.

Things that could be written as part of a reflection:

- A brief summary of what has happened
- A description of a particular character and what has happened to them
- Something the author has done that they really like or dislike

It might look something like this:



MONDAY

It was funny when the girl grabbed the microphone
and shouted to the whole shop!

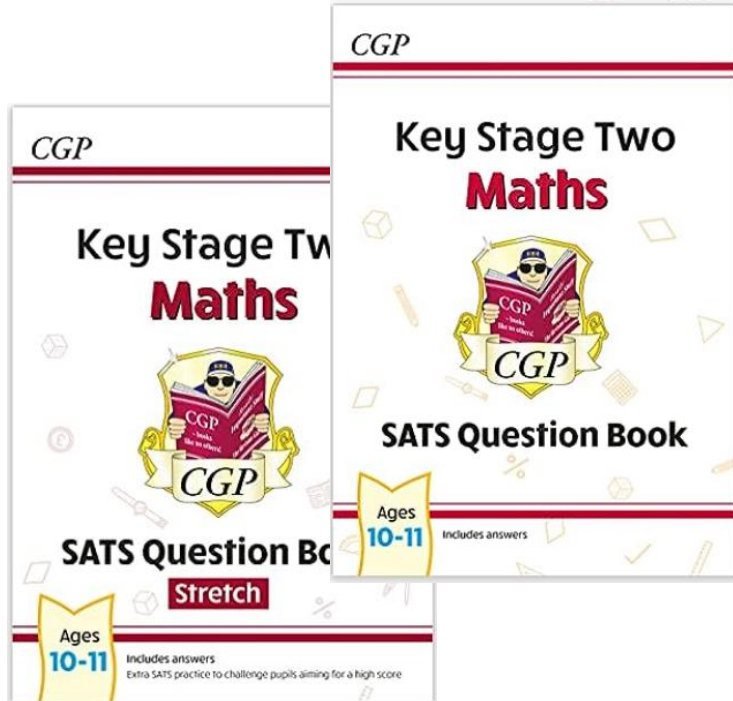


Homework

Atom Learning

Grammar and Punctuation– 2x a week

Maths – 2x a week



CGP Maths Books

After Christmas



Statutory Assessments

Assessments in Year 6

- **SATS – Week beginning 13th May**
- Mock SATS and other assessments happen throughout the year



Important Notices

- PE kits (green t-shirt and sweatshirt and black shorts or tracksuit bottoms or leggings and appropriate sports shoes) should be worn to school on **Monday**
- Swimming begins next **Friday 15th**
- PE kits should be worn on all school trips
- Water bottles (labelled) in school for the week
- School Planner in school each day
- Punctuality and Attendance vital
- Appropriate Dress – details in Parent Guide (trainers for sports)
- **Contacting us** – details in Parent Guide





YEARBOOK



HELP NEEDED PLEASE!



How to support your child

- **Read every evening (and encourage them to record in their School Planner).**
- **Encourage your child to complete their homework on time.**
- **Find opportunities to rehearse number facts such as number bonds, multiplication facts or prime numbers.**
- **Create engaging opportunities to write (postcards, thank you letters or diaries).**
- **Remind your child that practice is what helps us learn and develop.**
- **Don't let your perception of education cloud their view of themselves (avoid phrases like 'I am bad at maths').**
- **Check the Lyndhurst Scoop for key information.**
- **Talk to your child about what they have been learning each day.**



General Questions

- What about homework? Homework guidance for each year group is available on the website
- How can I know what's going on? Please check The Scoop and our website regularly.
- How can I contact the class teacher? Please send them a message via email.
- What if I'm worried about my child? In the first instance please contact the class teacher. It is possible that they will pass this on to their phase leader or a member of the leadership team who will follow up with you.
- I'm not sure about which calculation methods or English terminology you use. How can I get some help? Our subject leaders Miss Harwood & Mr Turner are on hand so contact us if you would like further clarification.
- My child has SEND and I don't know what support they will receive? Speak initially to your class teacher and to Ms Jones (SENDCo) at one of our regular coffee mornings if you need further information.

