

SUBSTATION COVERS





Wildlife outage protection for substations.

Kaddas Enterprises is the leader in raptor protection and preventing wildlife-caused power outages. We're proud partners with many international groups & power utility companies around the world, all sharing a common goal of realizing uninterrupted service, associated cost savings and reliability.



Kaddas was receptive and creative in producing a product to meet our specific needs. Overall, I think the covers look fantastic!

We have not had a power outage, since the covers have been installed. Thanks to the folks at Kaddas for working with us on this project.



-Brian Kollman

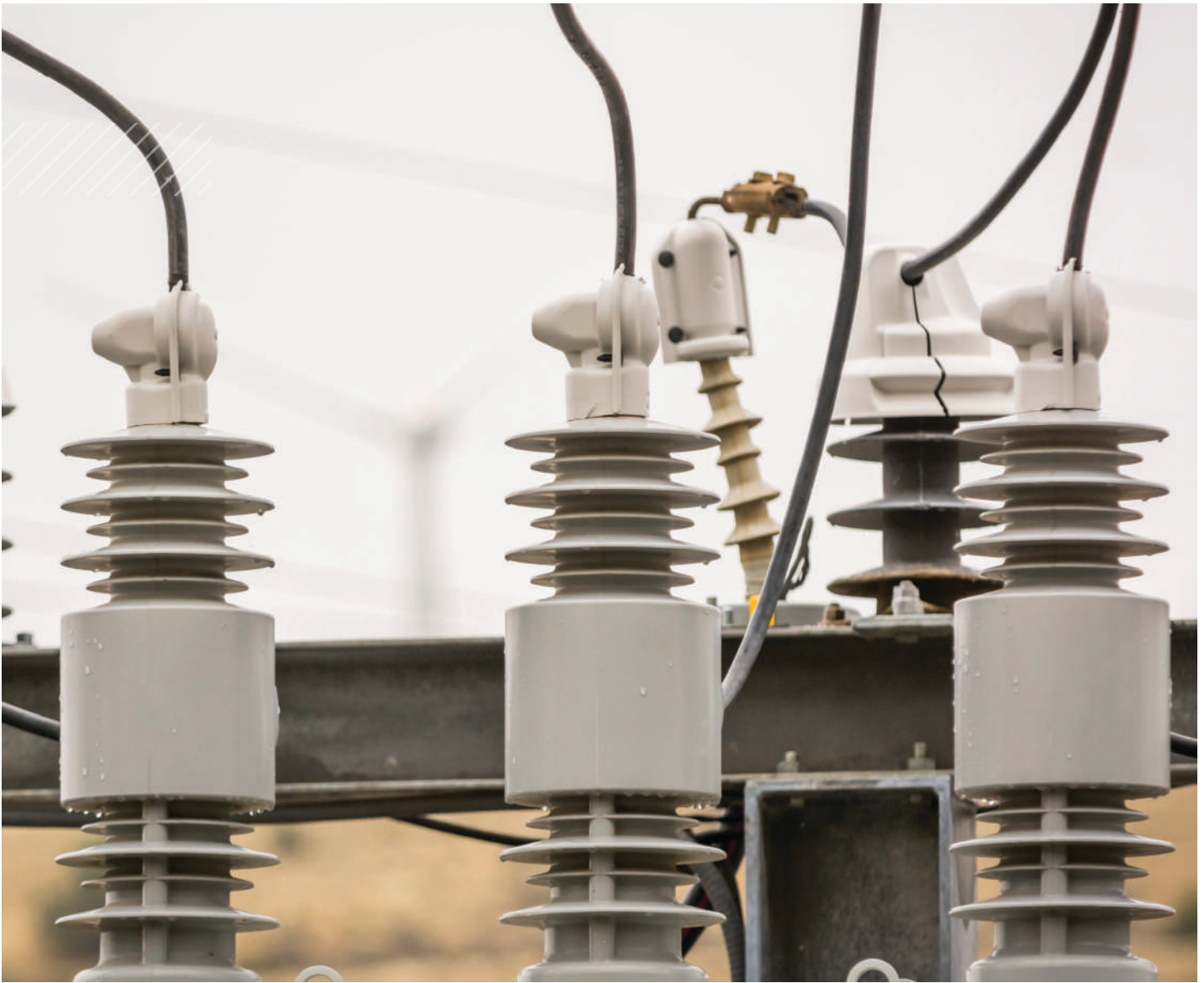
Operations Manager Columbia Basin Electric Cooperative



WHY KADDAS

FEATURES	BENEFITS
PROPRIETARY BIRDCUARD MATERIAL	IMPENETRABLE, FIRE RETARDANT, AND UV RESISTANT
IEEE 1656 COMPLIANT	PROVEN AND TESTED IN THE FIELD BY THE BEST
WOMEN OWNED BUSINESS	INVEST IN DIVERSITY AND SUPPLY CHAIN FLEXIBILITY
INNOVATIVE ENGINEERING	SIGNIFICANTLY REDUCES FAILURES IN THE FIELD
100% US COMPONENTS AND MANUFACTURING	QUALITY PRODUCT AND PREDICTABLE ON TIME DELIVERY
INDUSTRY EXPERTISE	WE FORESEE WILDLIFE POWER OUTAGES AND FAILURES
EASE OF INSTALLATION	LOWER LABOR COSTS AND QUICK TO IMPLEMENT
ISO9001:2015 CERTIFIED ORGANIZATION	MEETS INTERNATIONAL QUALITY STANDARDS; AUDITED ANNUALLY

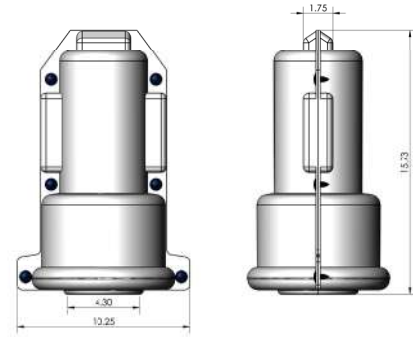




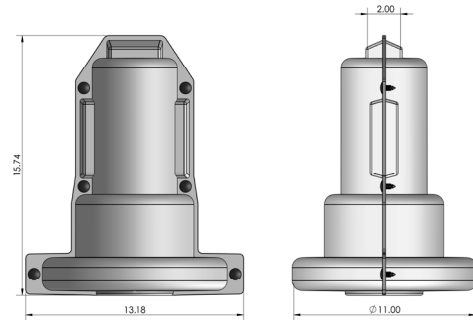
MATERIAL TESTED INFORMATION

DESCRIPTION	ASTM TEST	SPECIFICATIONS
ELECTRICAL DIELECTRIC STRENGTH (TESTED IN OIL)	D-149-09	PASS > 49KV
ELECTRICAL DIELECTRIC STRENGTH (TESTED IN AIR)	D-149-09	PASS > 72KV
COMPARATIVE TRACKING INDEX	D-3638-12	PASS
TENSILE STRENGTH (BEFORE UV EXPOSURE)	D-638-10	6570 PSI
TENSILE STRENGTH (AFTER UV EXPOSURE)	D-638-10	6480 PSI
TENSILE IMPACT (BEFORE UV EXPOSURE)	D-1822-13	78.4 FT-LBS/IN SQ
TENSILE IMPACT (AFTER UV EXPOSURE)	D-1822-13	69.3 FT-LBS/IN SQ
FLAMMABILITY (UL94)	D-3801	PASS V-0
UV EXPOSURE	D-4329	PASSED, 1500 HOURS

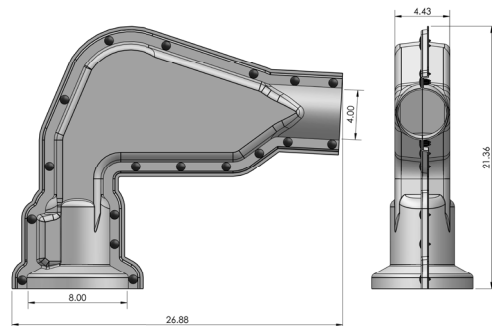
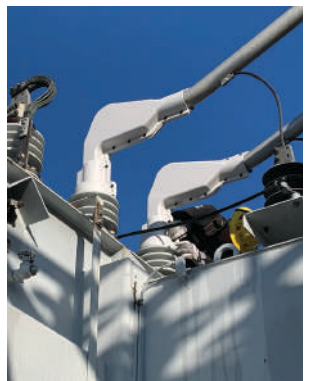
PART #	DESCRIPTION	SPECS
KE1555-01	BUSHING/TERMINAL COVER	15.73" x 10.25" x 4.30"



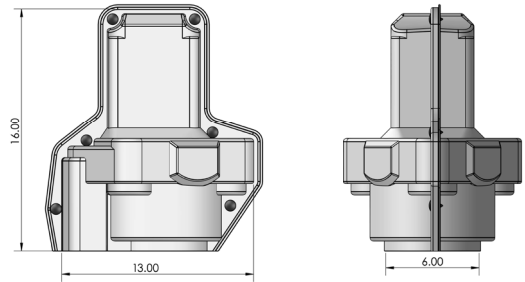
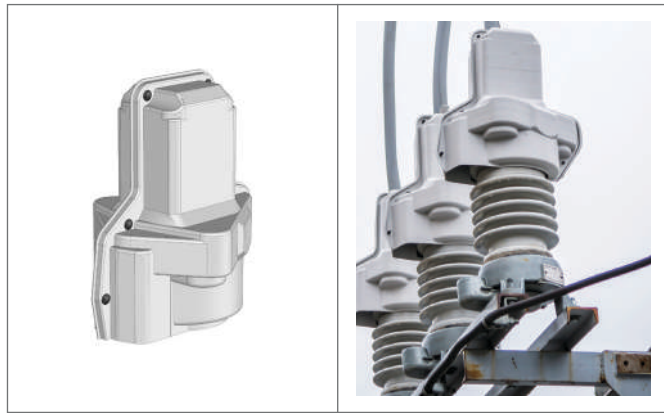
PART #	DESCRIPTION	SPECS
KE1555-02	BUSHING/TERMINAL COVER	15.74" x 13.18" x 11.00"



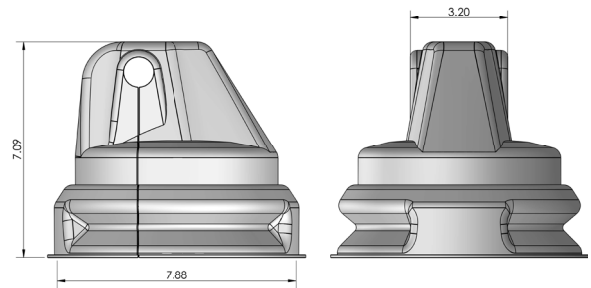
PART #	DESCRIPTION	SPECS
KE1558-01	FLEXIBLE 90 DEGREE CONNECTOR COVER	21.36" x 26.88" x 8.00"



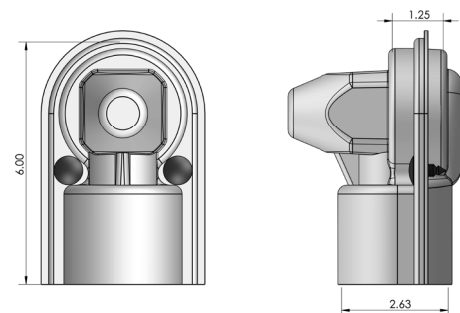
PART #	DESCRIPTION	SPECS
KE 1055	ARRESTER COVER FOR PORCELAIN STATION TYPE	16" x 13" x 6"



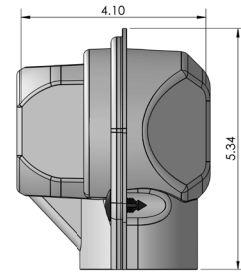
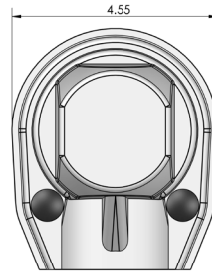
PART #	DESCRIPTION	SPECS
KE 1090	ARRESTER CAP FEED THROUGH	7.09" x 7.88" x 3.20"



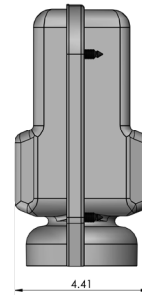
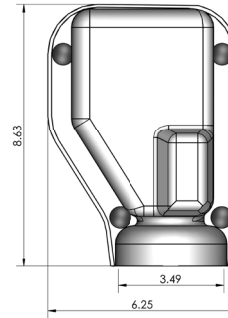
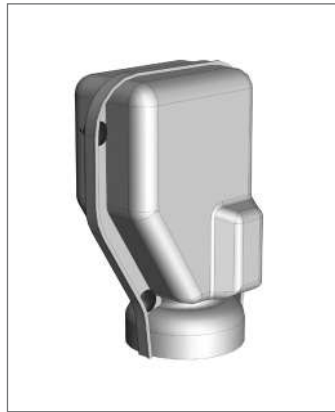
PART #	DESCRIPTION	SPECS
KE 1146	TERMINAL COVER EYEBOLT	6.00" x 2.63" x 1.25"



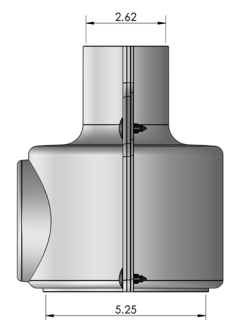
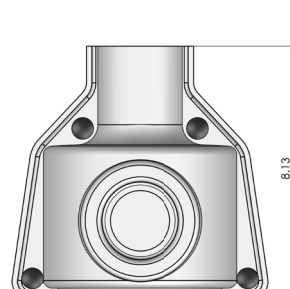
PART #	DESCRIPTION	SPECS
KE 1147	TERMINAL COVER U-BOLT	5.34" x 4.55" x 4.10"



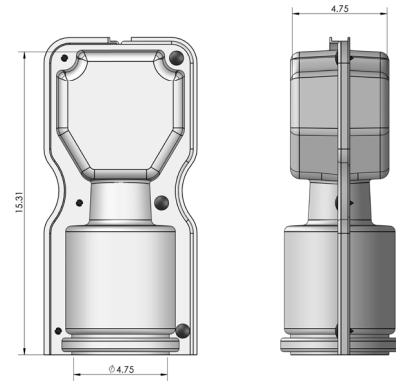
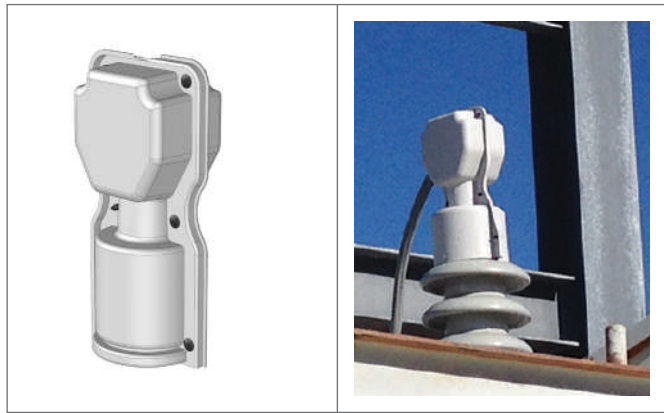
PART #	DESCRIPTION	SPECS
KE 1151	BUSHING COVER TRANSFORMER OIL WINDOW	8.63" x 6.25" x 4.41"



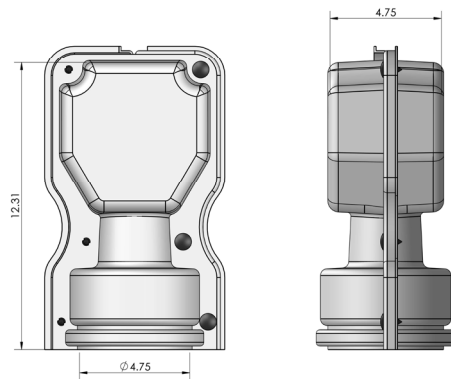
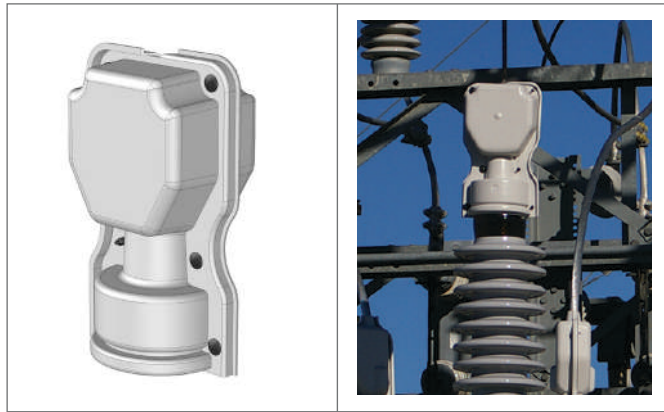
PART #	DESCRIPTION	SPECS
KE 1159	BUSHING OIL FILLED WINDOW TYPE	8.13" x 5.25" x 2.62"



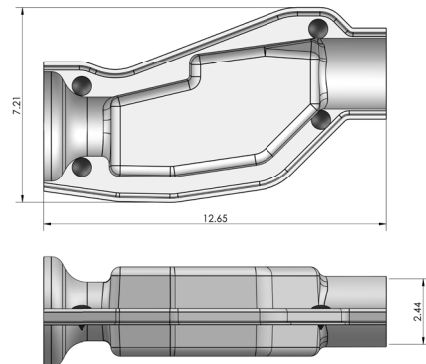
PART #	DESCRIPTION	SPECS
KE 1148	STUD CONNECTOR COVER	15.31" x 4.75" x 4.75"



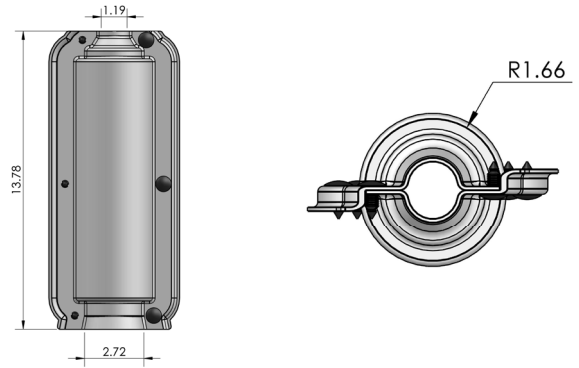
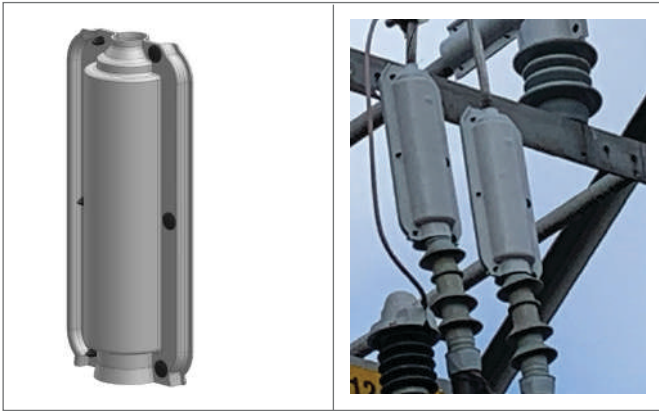
PART #	DESCRIPTION	SPECS
KE 1154	BUSHING COVER TRANSFORMER OIL WINDOW SHORT	12.31" x 4.75" x 4.75"



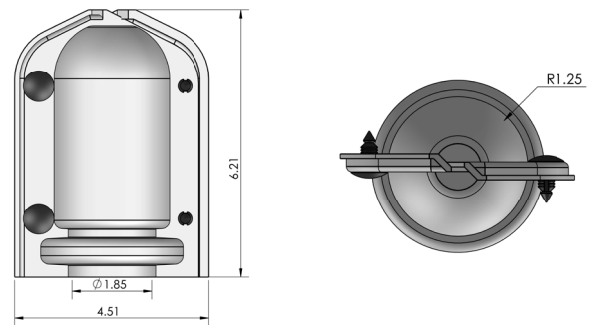
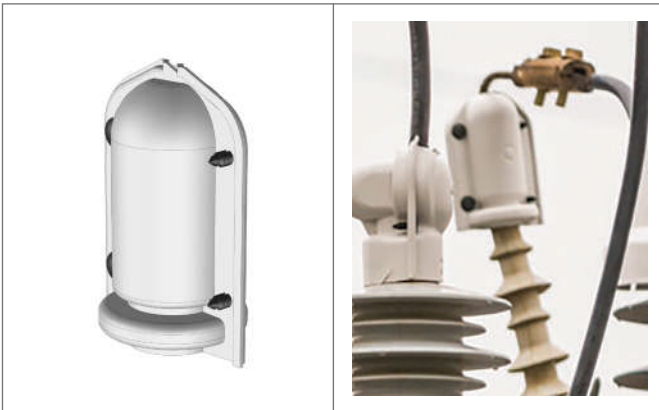
PART #	DESCRIPTION	SPECS
KE 1153	TRANSFORMER BUSHING TO BUS BAR CONNECTION COVER	7.21" x 12.65" x 2.44"



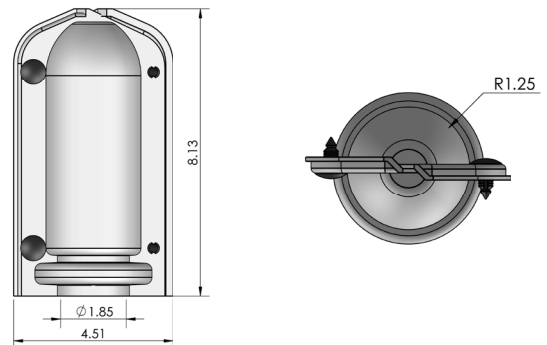
PART #	DESCRIPTION	SPECS
KE1565-01	TERMINATOR COVER	13.78" x 2.72" x 1.19"



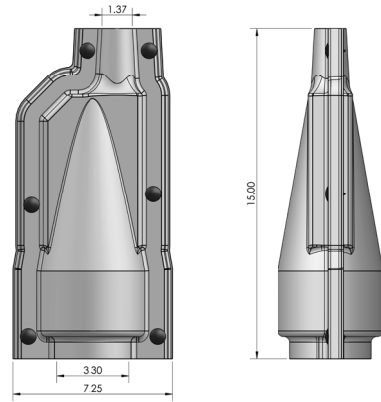
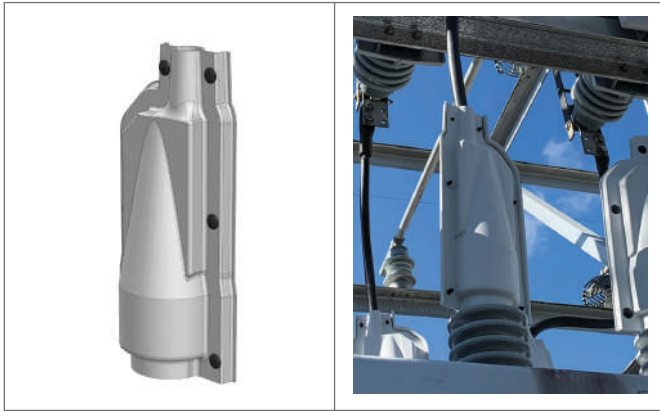
PART #	DESCRIPTION	SPECS
KE1211	TERMINATOR COVER SHORT	6.21" x 4.51" x 1.85"



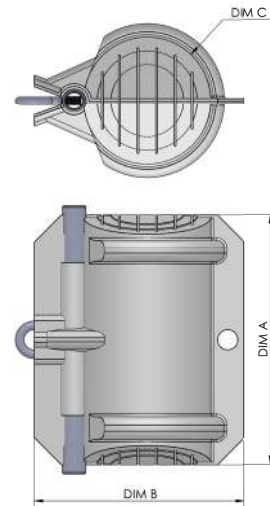
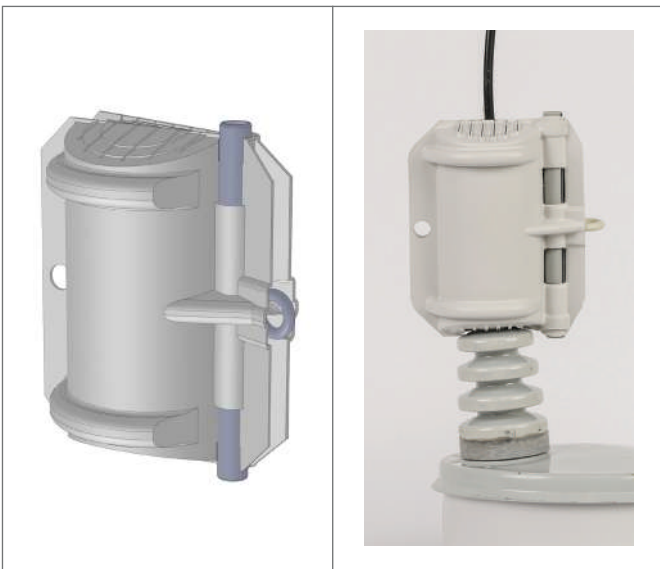
PART #	DESCRIPTION	SPECS
KE1212	TERMINATOR COVER LONG	8.13" x 4.51" x 1.85"



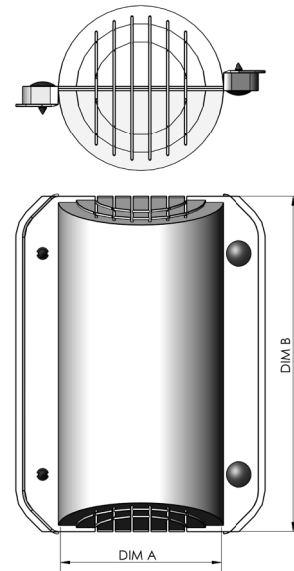
PART #	DESCRIPTION	SPECS
KE1563-01	BREAKER BUSHING AND CONDUCTOR COVER	15.00 x 7.25" x 3.30"



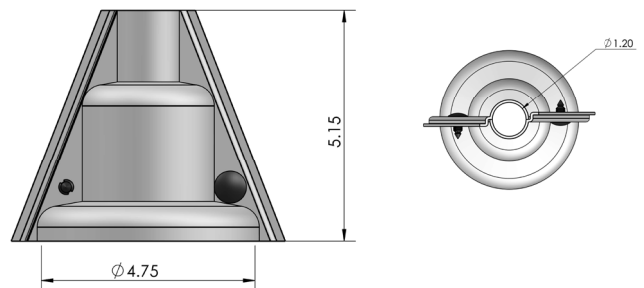
PART #	DESCRIPTION	SPECS (A x B x C)
KE1501	BUSHING/TERMINAL COVER HOT STICK	9.32" x 7.77" x 4.5"
KE1501-01	BUSHING/TERMINAL COVER HOT STICK PRE-CUT TO FIT AROUND FIRST SHED	9.32" x 7.77" x 4.5"
KE1502	BUSHING/TERMINAL COVER HOT STICK	11.00" x 9.54" x 6.5"
KE1503	BUSHING/TERMINAL COVER HOT STICK	14.45" x 11.53" x 8"
KE1504	BUSHING/TERMINAL COVER HOT STICK	6.09" x 6.89" x 3.5"
KE1556	BUSHING/TERMINAL COVER HOT STICK	17.00" x 8.50" x 4.5"



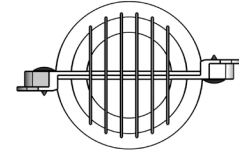
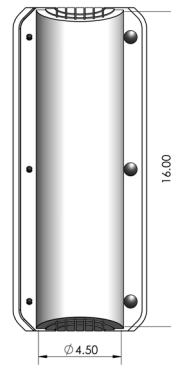
PART #	DESCRIPTION	SPECS (A x B)
KE 1521	BUSHING/TERMINAL COVER NON HOT STICK	4.5" x 8"
KE 1522	BUSHING/TERMINAL COVER NON HOT STICK	6.5" x 10"
KE 1523	BUSHING/TERMINAL COVER NON HOT STICK	8" x 14"
KE 1525	BUSHING/TERMINAL COVER NON HOT STICK	3.5" x 12"
KE 1526	BUSHING/ TERMINAL COVER NON HOT STICK	4.5" x 12"



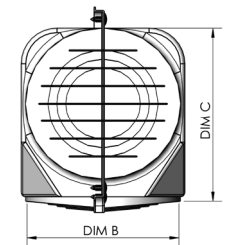
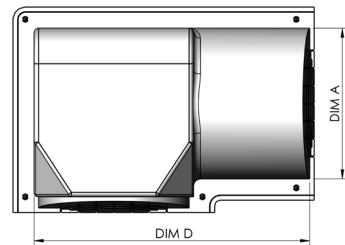
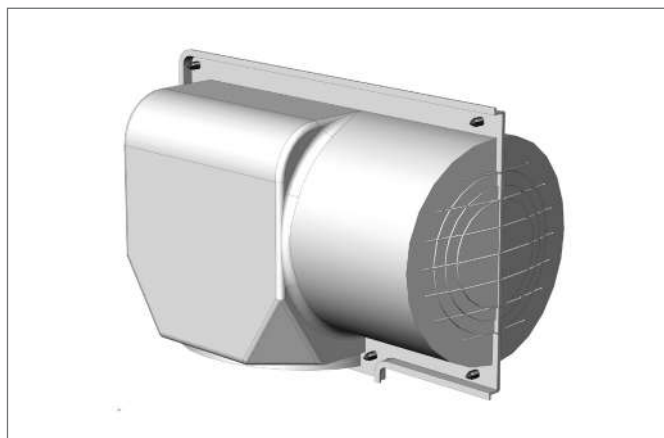
PART #	DESCRIPTION	SPECS
KE 1526-01	TRANSFORMER BUSHING COVER	5.15" x 4.75" x R1.20"



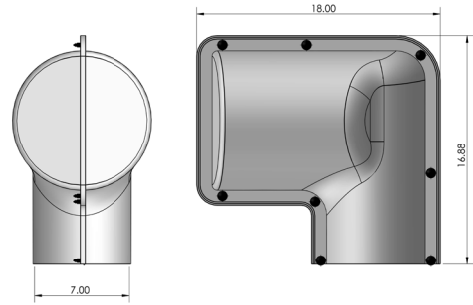
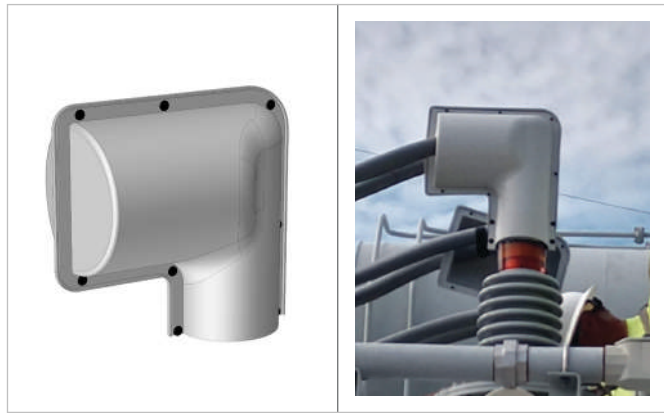
PART #	DESCRIPTION	SPECS
KE 1527	BUSHING/ TERMINAL COVER NON HOT STICK	16.00" x 4.50" x R2.25"



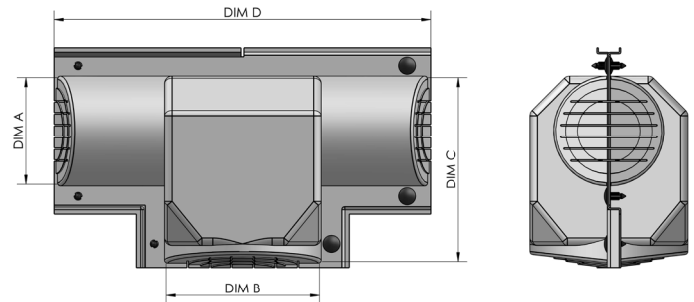
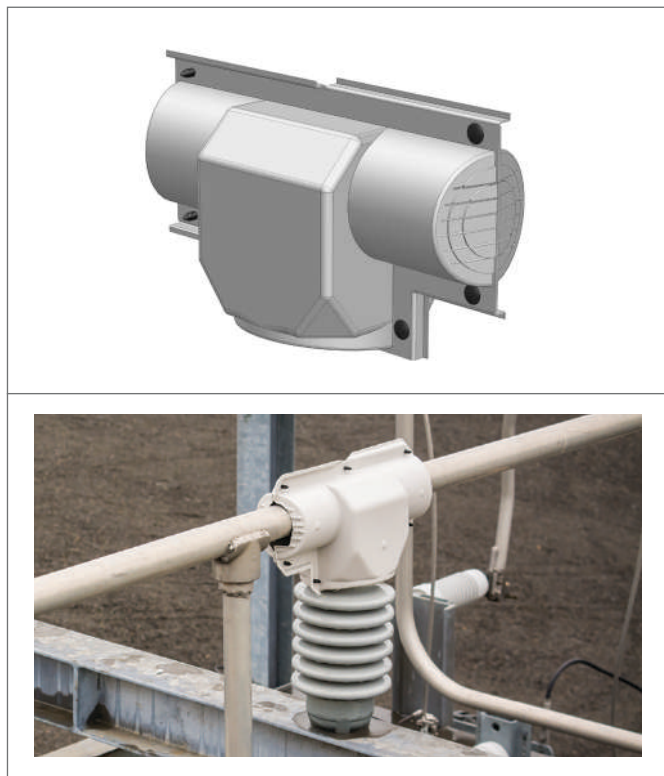
PART #	DESCRIPTION	SPECS (A x B x C x D)
KE 1531	VOLTAGE REGULATOR COVER	4.5" x 6.5" x 7.5" x 10.5"
KE 1532	VOLTAGE REGULATOR COVER	6.5" x 8" x 9.5" x 13"
KE 1533	VOLTAGE REGULATOR COVER	8" x 8" x 9.5" x 17"



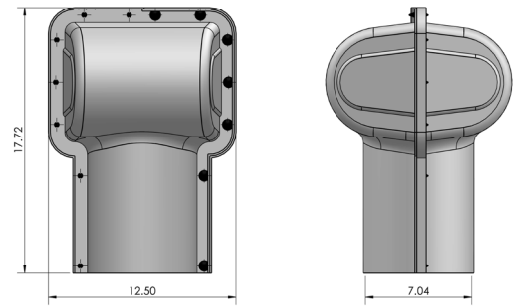
PART #	DESCRIPTION	SPECS
KE1534-01	TRANSFORMER BUSHING COVER, 90 DEG	16.88" x 18.00" x 7.00"



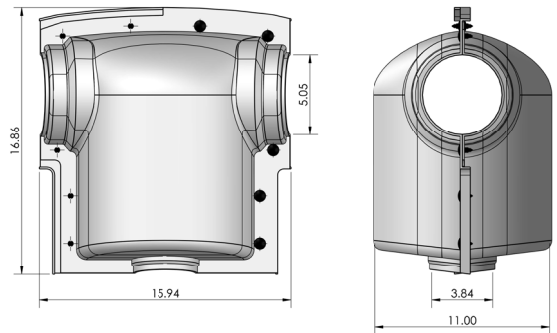
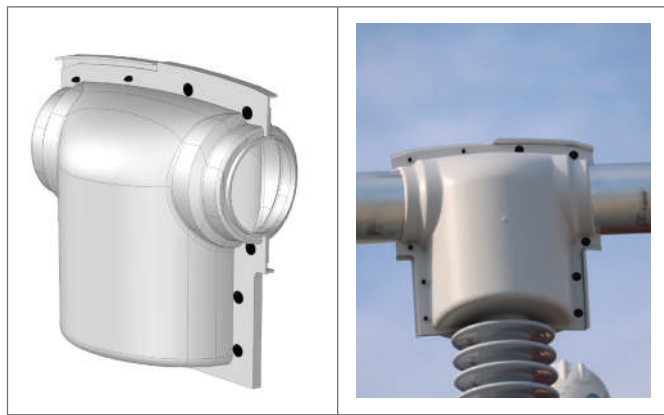
PART #	DESCRIPTION	SPECS (A x B x C x D)
KE1541	STATION POST TO BUS BAR FEED THROUGH COVER	4.5" x 6.5" x 7.5" x 14"
KE1542	STATION POST TO BUS BAR FEED THROUGH COVER	6.5" x 8" x 9.5" x 18"
KE1543	STATION POST TO BUS BAR FEED THROUGH COVER	8" x 8" x 9.5" x 20"
KE1544	STATION POST TO BUS BAR FEED THROUGH COVER	8" x 9" x 11.5" x 21"



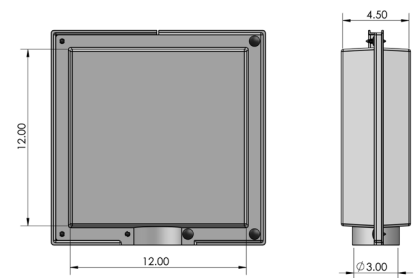
PART #	DESCRIPTION	SPECS
KE1545-01	ARRESTER COVER, FEED THROUGH	17.72" x 12.50" x 7.04"



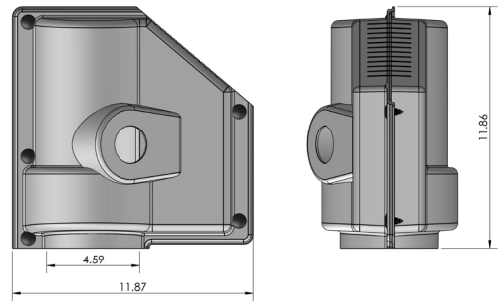
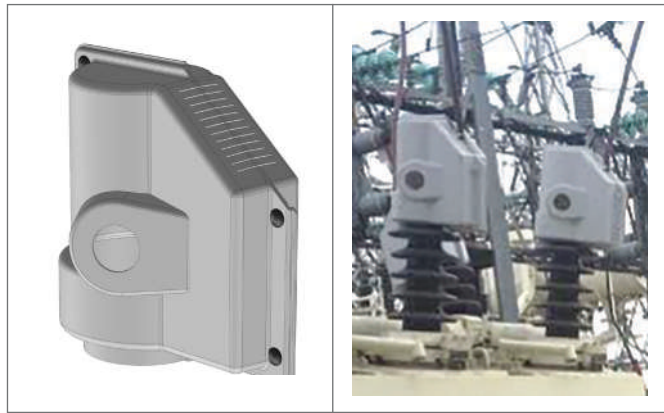
PART #	DESCRIPTION	SPECS
KE1546-01	BUS COVER - STATION POST INSULATOR	16.86" x 15.94" x 11.00"



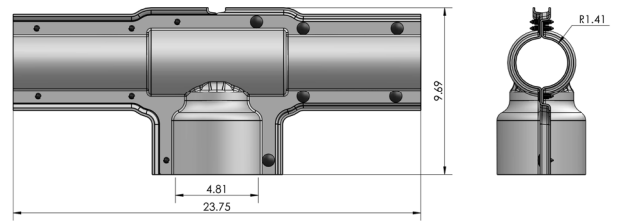
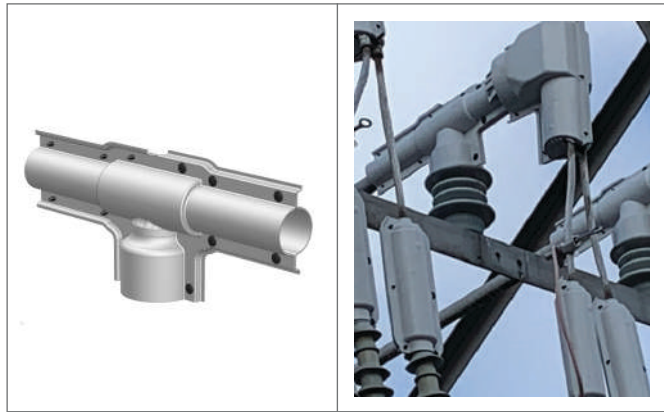
PART #	DESCRIPTION	SPECS
KE1551	TERMINAL COVER SQUARE	12.00" x 12.00 x 3.00"
KE1553	TERMINAL COVER OPEN BOTH ENDS	12.00" x 12.00 x 4.50"



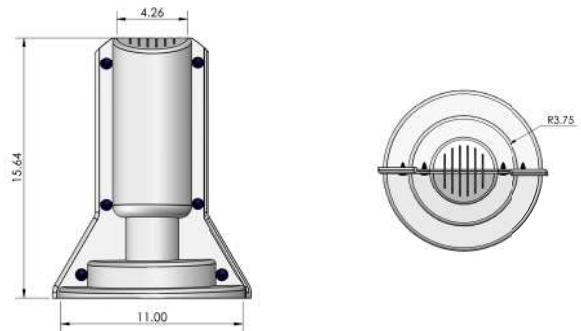
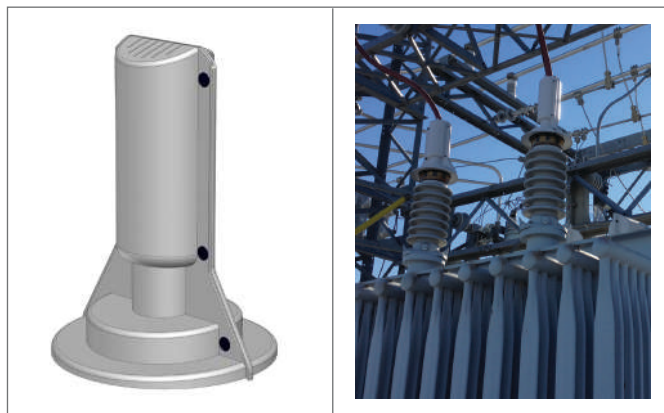
PART #	DESCRIPTION	SPECS
KE 1552	OIL FILLED BUSHING COVER ASSEMBLY	11.86" x 11.87" x 4.59"



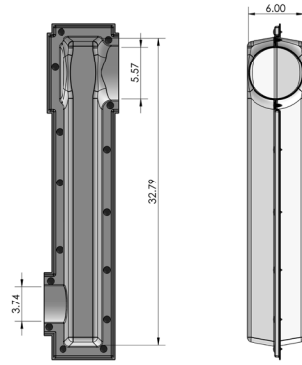
PART #	DESCRIPTION	SPECS
KE 1564-01	BUS FEEDER COVER	9.69" x 23.75" x 4.81"



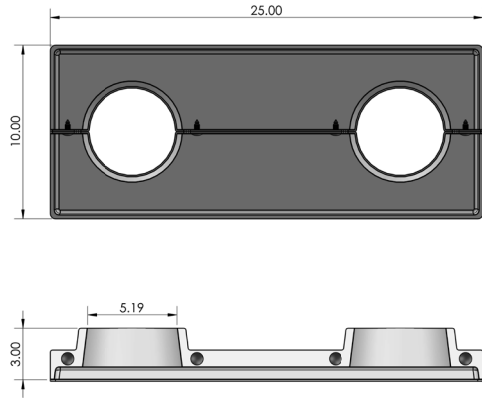
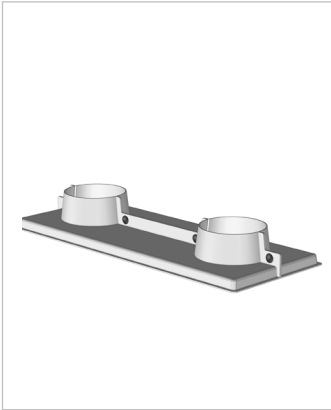
PART #	DESCRIPTION	SPECS
KE 1554	BUSHING/TERMINAL COVER	15.64" x 11.00" x 4.26"



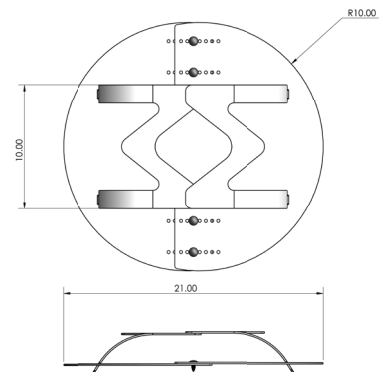
PART #	DESCRIPTION	SPECS
KE1560-01	BUSBAR COVER	32.79" x 6.00"



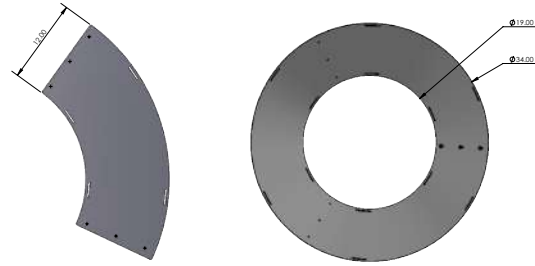
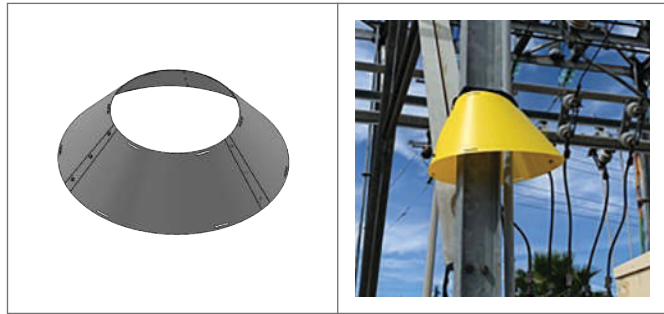
PART #	DESCRIPTION	SPECS
KE1561-01	DISCONNECT COVER	3.00" x 25.00" x 10.00"



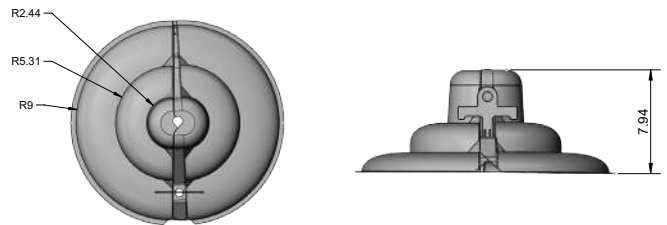
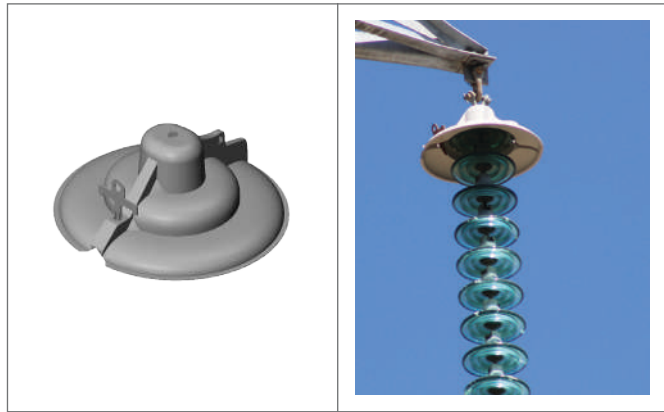
PART #	DESCRIPTION	SPECS
KE1205	INSULATOR DISK CLEAR	21.00"



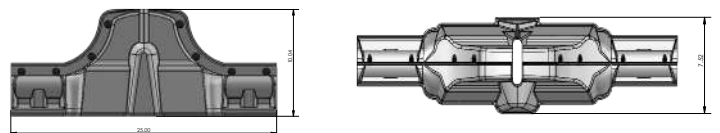
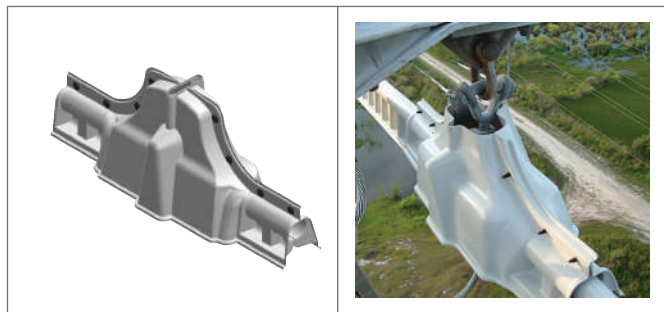
PART #	DESCRIPTION	SPECS
KE1566-03	SUBSTATION CONE YELLOW	8.50" x 18.50" x 12.00"
KE1566-01	SUBSTATION CONE YELLOW	19.00" X 34.00" X 12.00"



PART #	TRANSMISSION DESCRIPTION	SPECS
KE1192	BELL INSULATOR STREAMER SHIELD	20" X 7.94"



PART #	TRANSMISSION DESCRIPTION	SPECS
KE1171	FIBER OPTIC DAVIT ARM SUSPENSION COVER WITH ARMS	17.00" 75.00" X 7.52"
KE1172-01	FIBER OPTIC HANGER CENTER COVER	10.04" X 25.00" X 7.52"



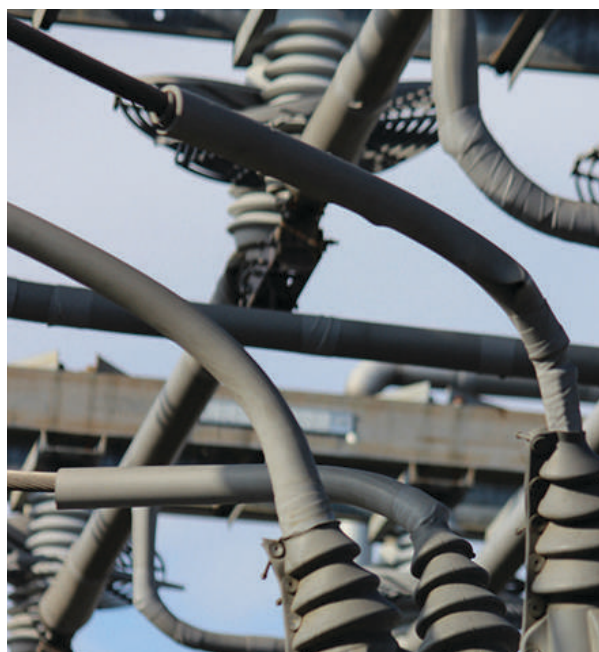
BIRDHOSE

SILICONE RUBBER SPLIT LINE HOSE FOR DISTRIBUTION LINES AND SUBSTATION CABLES AND BUSES
DIELECTRIC RATING OF 20KV PHASE TO GROUND OR UP TO 35 KV SYSTEMS

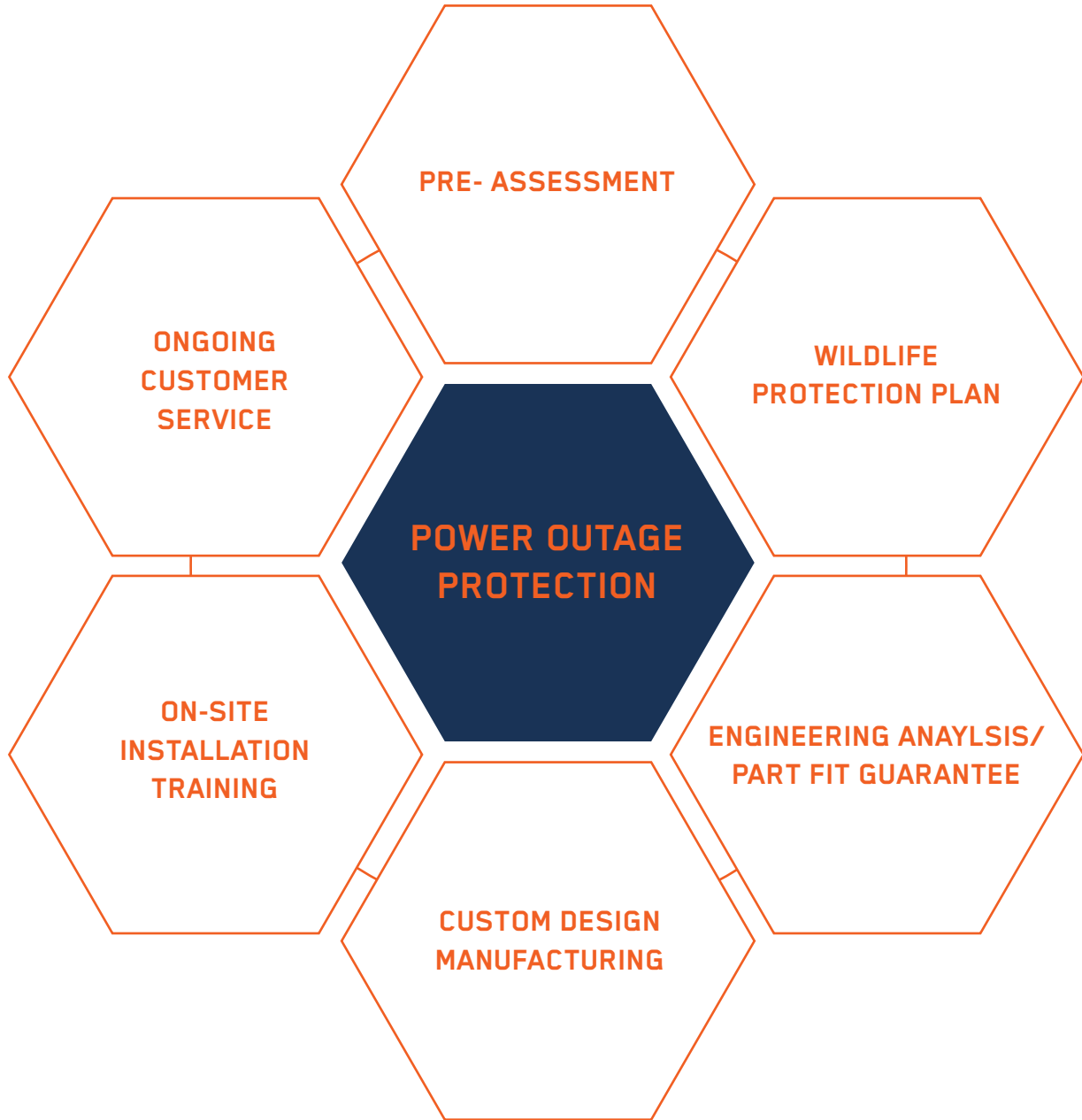
PART #	DESCRIPTION	COLOR	CONDUCTOR SIZE (AWG OR KCMIL)	CONDUCTOR OD RANGE
IH025M-050	BIRDHOSE .25" OUTSIDE DIAMETER	GR	6	0.198 (.5cm)
IH050M-050	BIRDHOSE .50" OUTSIDE DIAMETER	GR	4, 2, 1/0, 2/0	0.25 - 0.447 (.6cm - 1.1cm)
IH075M-050	BIRDHOSE .75" OUTSIDE DIAMETER	GR	3/0, 4/0, 266.8-336.4	0.502 - 0.741 (1.3cm - 1.9cm)
IH100M-050	BIRDHOSE 1" OUTSIDE DIAMETER	GR	397.5, 447, 556.5, 605, 636	0.743 - 1.00 (2.0cm - 2.5cm)
IH125M-050	BIRDHOSE 1.25" OUTSIDE DIAMETER	GR	666.6, 715.5, 795, 900, 954	1.00 - 1.196 (2.5cm - 3.0cm)
IH150M-050	BIRDHOSE 1.50" OUTSIDE DIAMETER	GR	1033.5, 1113, 1192.5, 1272, 1351.5, 1431	1.25 - 1.427 (3.2cm - 3.6cm)
IH175M-050	BIRDHOSE 1.75" OUTSIDE DIAMETER	GR	1590, 1780, 2156, 2167	1.50 - 1.735 (3.8cm - 4.4cm)
IH200M-050	BIRDHOSE 2.0" OUTSIDE DIAMETER	GR	2312, 2515	1.76 - 1.980 (4.5cm - 5.0cm)

IH025M-050 - IH175M-050 - AVAILABLE IN 50 FT LENGTHS/INCREMENTS (15,2M)

IH0200M-050 - AVAILABLE IN 25 FT LENGTHS/INCREMENTS (7.6M)



KADDAS CUSTOM SOLUTIONS



FOR OVER 25 YEARS, KADDAS HAS BEEN PARTNERING WITH UTILITIES, CONTRACTORS AND ENGINEERS TO DESIGN SOLUTIONS TO PROTECT EQUIPMENT FROM ANIMAL CONTACT. CONTACT KADDAS FOR YOUR CUSTOM ENGINEERED SOLUTION



Dedicated to quality. Kaddas Enterprises is a manufacturer of thermoformed plastic parts. We are committed to delivering quality products on time, with a promise to meet or exceed our customers' requirements. We do this by adhering to and continually improving our quality management system. This requires the dedication and commitment of all our employees and suppliers.

Our vision at Kaddas Enterprises, Inc. is to offer global innovative solutions in industrial and commercial polymers, while being responsible for the manufacturing of plastic products. Here at Kaddas, we are committed to our customers by delivering high quality solutions through the dedication and talent of our team.

Our Core values are integrity and respect in our collaborative community, while continuously improving with creative and critical thinking. 100% Made in America by choice.



