



PROFILES

Plaster
Dry Lining
External Thermal Insulation





Content

Işık Group	2
General & Technical Information	4

Plaster

Corner Beads	10
Stop Beads	18
Depth Gauge Beads	19

Dry Lining

Corner Beads	22
Stop Beads	30
Edging Beads	30

External Thermal Insulation

Corner Beads with Mesh	32
------------------------	----



Efforts for Better
9.000 sqm plant,
Gebze,Kocaeli | TURKEY

Reliable Manufacturer

In our Kocaeli facility, our experienced production team working day and night to keep constant production in extrusion, steel and fibre mesh corner to aim quality like how we promise to our partners because our reliable production is our significative feature for abroad and domestic market.

Long-term Supplier

As a more than a half-century company, we aware that our commercial relationship between our clients needs to be on a win-win situation that's our first mentality since our establishment. We are showing our finest effort on service and quality to increase mutual benefits with our partners.

Products with Quality

In our type of manufacturing system, quality control is the most important hallmark to keep persistence in the production department. Our standards need to meet up with EN Standards, for instance, the thickness, wing dimension, and packaging of the profiles. We are aware that, these quality standards are made difference and directly affect our partners' businesses. We develop our quality department every day to cath these standards and serve the best to our partners.

Fast & Good Service

Our company mentality focuses on delivering the goods on time with promised quality that's the reason our supply and production chain system created to answer our partners' needs the shortest time. Fast service means happy customers and more profitable businesses for them!

PVC EXTRUSION
7.000
tons per year



GLASS FIBRE MESH
36.000.000
meters pear year





STEEL METAL PROFILE
5.500
tons per year

WAREHOUSE
1.500
pallettes capacity



Make sure that you choose the most suitable profile material and plaster mortar according to the application area to avoid excessive risks, claims and consequential damage.

To prevent bimetallic corrosion, ensure that all metal components used in a given installation are of the same material type.

Please ensure sufficient aeration to prevent corrosion and accelerate the drying time.

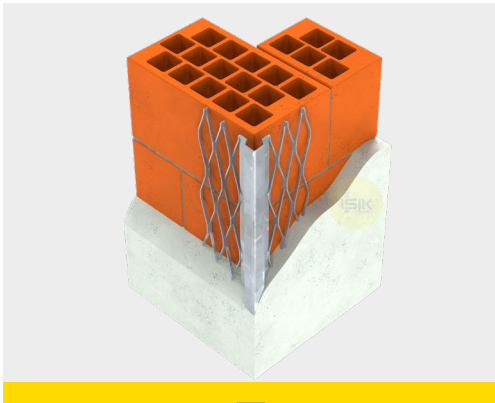
Avoid damage to beads when trowelling plaster or render.

Care should also be taken to prevent mechanical damage to the galvanised coating.

The substrate must be dry, clean, dust-free and absorbent and load-bearing in accordance with the requirements of the plaster coats to be applied.

The wall surface must not contain salts or foreign substances and efflorescence must be removed.

In general, metal beads should be kept dry and stored flat.



Galvanised Beads

Manufactured with DX51D+Z galvanised steel strips with zinc coating in accordance to **EN 10346**.

Z275 Zinc coating of 275 g/m² on both sides. Meets EN 13658 parts 1&2 and EN 14353 applications.

Z100 Zinc coating of 100 g/m² on both sides. Meets EN 14353 applications.

Z60 Zinc coating of 60 g/m² on both sides. Meets no standard.

Application Areas:

- Suitable for interior applications.
- Not suitable for external applications unless secondary protection against corrosion is provided.
- Not permitted for areas exposed to high moisture and damp after application. (houses in wooded areas, wet rooms, swimming pools and domestic bathrooms etc.)

Compatibility:

- Suitable for lime, cement, lime-cement or gypsum based plaster applications.

Installation:

- Should be fixed with plaster or render dabs. Adhesive mortars with set accelerators containing chlorides are not suitable for fixing galvanised profiles.
- Not resistant to corrosion when using top coats of less than 3mm depth in exterior areas.
- Should not come into contact with aluminium or stainless steel profiles.
- Cut with hand plate shears across the wings and a fine toothed saw across bead noses.
- Should be fixed in accordance with embedding the bead's wings into the plaster.



Galvanized Beads with PVC nose

Manufactured with DX51D+Z galvanised steel strips with zinc coating of 275 g/m² on both sides in accordance to **EN 10346** and protective **PVCu nose**. PVC nose adds protection and a maintenance free finish.

Application Areas:

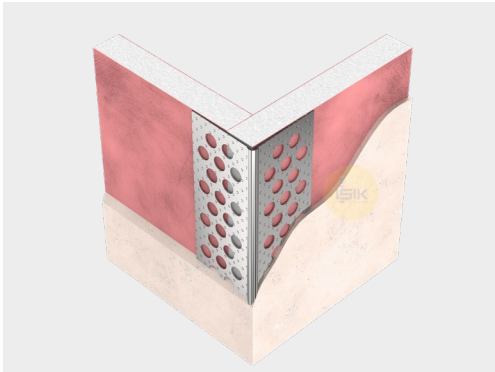
- Suitable for exterior applications and in conditions with high moisture and damp. (houses in wooded areas, bathrooms, etc.)
- Not suitable for exposed coastal locations or corrosive environments.

Compatibility:

- Suitable for lime or cement based renders, scratch renders, pasty finishing coats.

Installation:

- Should be mechanically fixed with stainless clout nails or with cement based mortar, no plaster.
- May not be plastered over. PVC nose must be cleaned off immediately after plastering.
- Take off nails eventually used for fixing of the profiles before plastering.
- Cut with hand plate shears across the wings and a fine toothed saw across bead noses.



Natural Aluminium Beads

Manufactured with natural aluminium strips in accordance to **EN 485** and **EN 573**.

Application Areas:

- Suitable for interior applications and thermal insulation systems.
- Not suitable for external applications unless made from white powder-coated aluminium which is suitable for use with mineral render systems and with epoxy, silicone or silicate render systems.

Compatibility:

- Suitable for gypsum and synthetic resin plaster applications.
- Not suitable for cement and lime-based plasters unless coated with base coating.

Installation:

- Should be fixed with plaster in the same quality as the base coat.
- Cut with hand plate shears across the wings and a fine toothed saw across bead noses. Never with a blade.



PVCu Beads

Extruded with **impact resistant, %0 recycled content** and **high quality** rigid PVC.

- Economical alternative to stainless steel for external applications.
- Superior corrosion resistance unlike galvanized beads.
- Unsharp edges prevent injuries.
- Convenient, easy to cut lengths on site.
- Light and easy to transport.
- Resistant to breakage.

Application Areas:

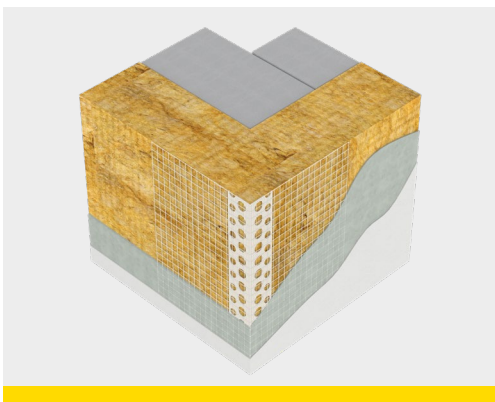
- Precise solution for interior areas exposed to high moisture and damp after application. (houses in wooded areas, wet rooms, swimming pools and domestic bathrooms etc.)
- Suitable for exposed coastal locations or corrosive environments.

Compatibility:

- Suitable for external applications with appropriate cement based renders.

Installation:

- Should be fixed with plaster in interior applications.
- Should be fixed with cement based adhesive mortar dabs in exterior applications.
- Cut using a fine-toothed hacksaw across bead noses.



PVCu Beads with Mesh

Extruded with **impact resistant, %0 recycled content, high quality** rigid PVC and reinforcement alkali-resistant glass fibre mesh.

- **ETAG 004** certified 145 g/m² reinforcement alkali-resistant E-glass fibre mesh.
- High quality 145, 110, 75 g/m² reinforcement alkali-resistant glass fibre mesh.
- Strong adhesion of bead and glass fibre mesh with transparent hot-melt glue.






Application Areas:

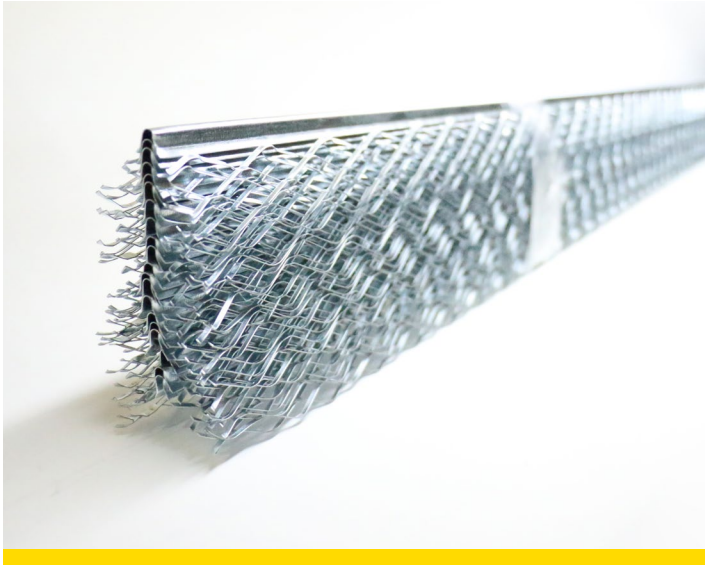
- Suitable for ETICS, EWI and EIFS applications.

Installation:

- Should be pushed into the first base coat layer.
- Cut using a fine-toothed hacksaw across bead noses.

The most appropriate bead should be specified in accordance with the application, required plaster depth and desired finish. You may refer to the below statements regarding the explanations, headings, drawings and tables.

Application Areas	<p>Interior plaster: Plaster for indoor applications.</p> <p>Exterior plaster: Render for outdoor applications.</p> <p>Dry Lining: Gypsum, drywall finishing.</p> <p>ETICS: External Thermal Insulation Composite System</p> <p>EIFS: External Insulation and Facade System</p> <p>EWI: External Wall Insulation</p>
Tolerances	<p>Plaster depth with a tolerance of $\pm 1\text{mm}$,</p> <p>Material thickness with a tolerance of $\pm 1\text{mm}$,</p> <p>Wing width with a tolerance of $\pm 1\text{mm}$ in total,</p> <p>Length with a tolerance of $\pm 10\text{mm}$.</p>
European Standards	<p>EN 13658-1: Metal lath and beads - Definitions, requirements and test methods - Part 1: Internal plastering</p> <p>EN 13658-2: Metal lath and beads - Definitions, requirements and test methods - Part 2: External plastering</p> <p>EN 14353: Metal beads and feature profiles for use with gypsum plasterboards - Definitions, requirements and test methods</p>
Technical Documents	<p>If the requested profile meets the requirements of the related standard, DoP (Declaration of Performance) can be asked for. Otherwise, TDS (Technical Data Sheet) can only be obtained.</p>
Plaster Depth	<p>Refer to the minimum depth with a tolerance of $\pm 1\text{ mm}$ without fixing material. The minimum depth is to be controlled at the fixing of the profile and in case of differences to be claimed immediately. Claims after the finishing of the plaster work can not be accepted.</p>
Surface Treatments	<div style="display: flex; justify-content: space-around;"> <div style="text-align: center;">  <p>Expanded mesh Flanges can be easily flexed over irregular, uneven surfaces with a significant cost advantage.</p> </div> <div style="text-align: center;">  <p>Mini mesh Fine mesh wings to provide an excellent plastering key.</p> </div> <div style="text-align: center;">  <p>Perforated smooth surface Holes allow gypsum to penetrate through the bead to the drywall.</p> </div> </div> <div style="display: flex; justify-content: space-around; margin-top: 20px;"> <div style="text-align: center;">  <p>Perforated embossed surface Embossed surface increases profile stability and improves plaster embedding.</p> </div> <div style="text-align: center;">  <p>Square Hole Large holes allow plaster or render to penetrate through the bead to the surface.</p> </div> </div>



Bundle (bun)



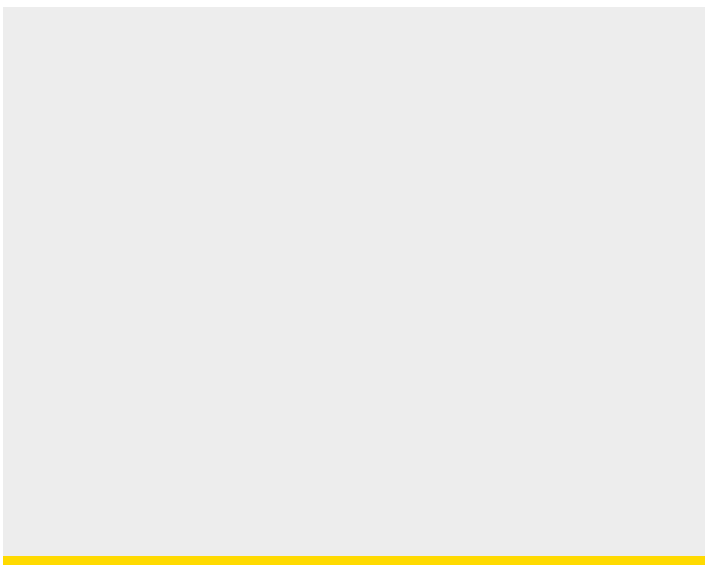
Paper edge protector (pep)



Cardboard box (cts)



PE foil bag (fbg)



Shrink film (shf)

*All delivery terms are Ex-Works if any other agreement does not exist.

**Orders of each article will be accepted and delivered as pallets.

***Our pallet quality meets with Provisions of Regulation about Marking of Wooden Packaging Marketing, as prepared for ISPM 15 Standard. Please ask this marking permission certificate to your export representative.



Pallet for Galvanised, Aluminium and PVCu Beads
 Orders should be replaced as 3 pallets or multiples of 3.



Pallet for PVC beads with mesh in cartons&steel cardboard boxes.
 Orders should be replaced as 3 pallets or multiples of 3.



Pallet for PVC beads with mesh in cartons or foil bags
 Orders should be replaced as 2 pallets or multiples of 2.

PLASTER

Corner Beads

G1071	G1031
G1081	G1040
G1070	A1040
A1070	G1050
G1080	G1051
A1080	A1050
G1090	A1051
A1090	P1000
G1000	P1001
G1010	P1002
G1020	P1020
G1021	P1030
G1030	P1031

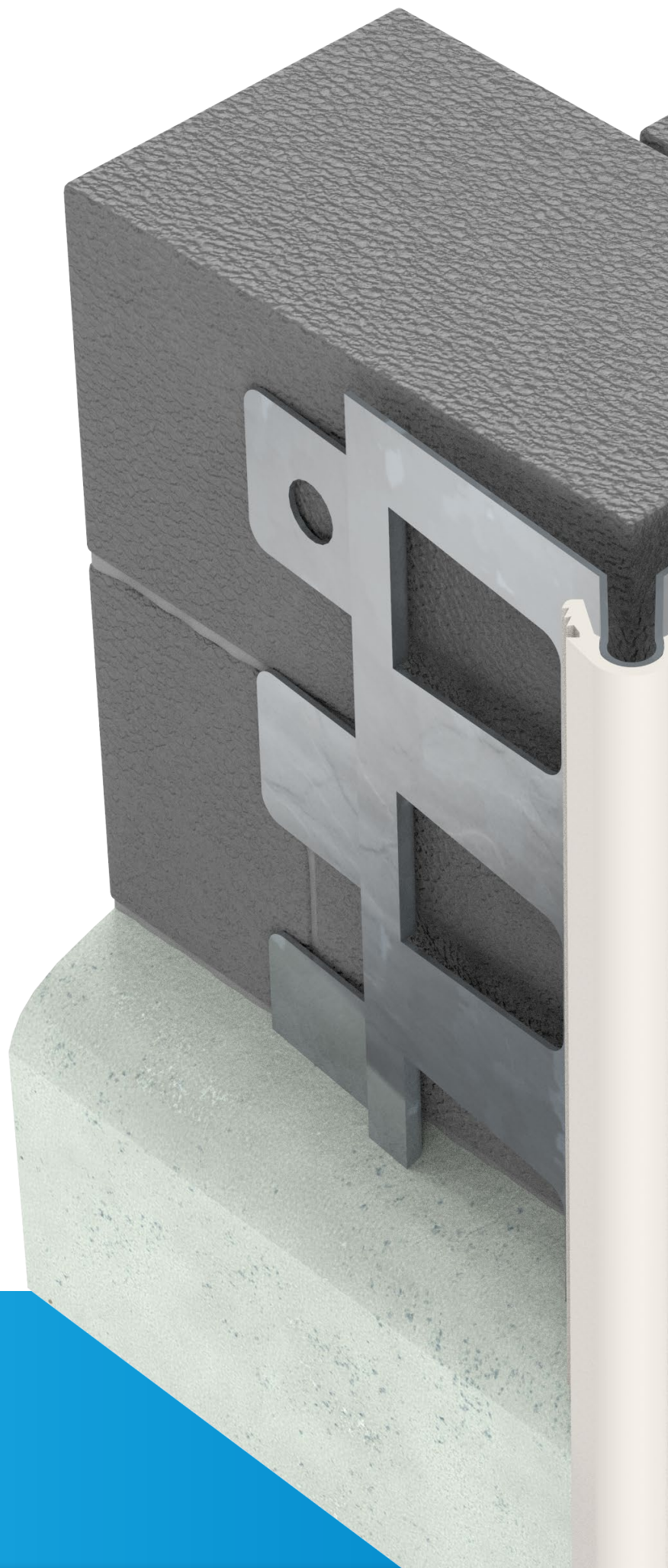
Stop Beads

G1200
A1200
G1210
G1220

Depth Gauge Beads

G1400
A1400
G1410
A1410

G: Galvanised Steel | A: Aluminium | P: PVCu



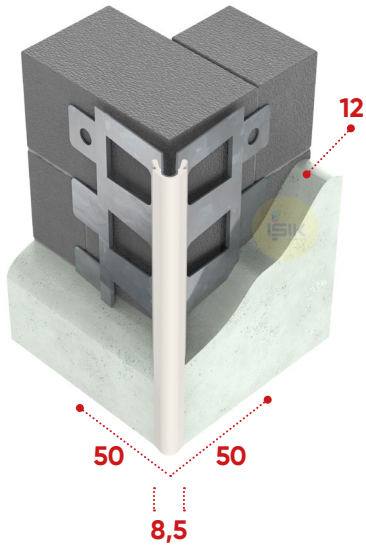
G1071

Galvanised Steel
Corner Bead
with PVC nose

50x50 mm wings | Square hole
Exterior plaster | 12 mm plaster depth

Provides true and straight arris. Prevents chipping and cracking to vulnerable corners. PVCu extruded nosing to protect the edge/arris of the bead during application.

**Please refer to "Materials" page in order to avoid any corrosion problem.*



Article Number	Material Thickness	Standards	Lengths	Pack /Pallet
G107155W3	0.50 mm Z275 white-nose	EN 13658-2	225, 250, 260, 270, 275, 280, 300 cm	15pcs / 80shf

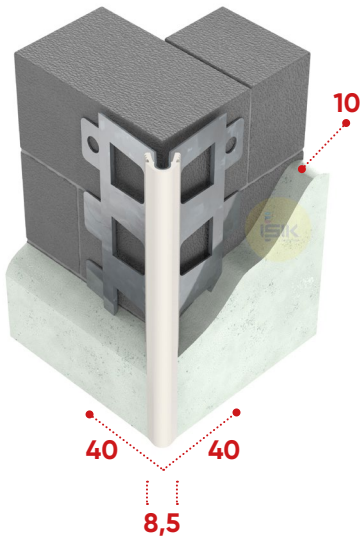
G1081

Galvanised Steel
Corner Bead
with PVC nose

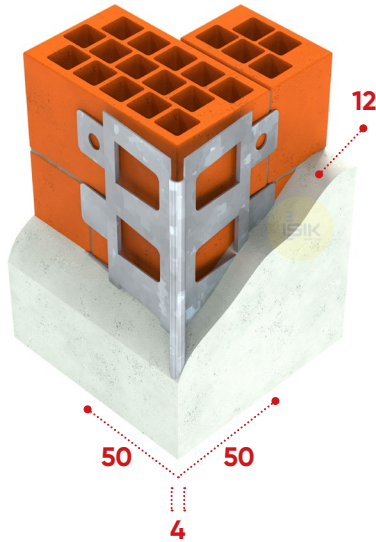
40x40 mm wings | Square hole
Exterior plaster | 10 mm plaster depth

Provides true and straight arris. Prevents chipping and cracking to vulnerable corners. PVCu extruded nosing to protect the edge/arris of the bead during application.

**Please refer to "Materials" page in order to avoid any corrosion problem.*



Article Number	Material Thickness	Standards	Lengths	Pack /Pallet
G108155W3	0.50 mm Z275 white-nose	EN 13658-2	225, 250, 260, 270, 275, 280, 300 cm	15pcs / 80shf

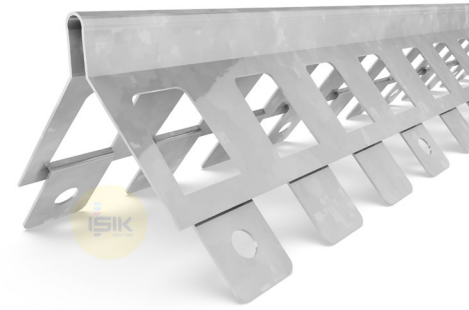


G1070

Galvanised Steel
Corner Bead
round edge

50x50 mm wings | Square hole
Interior plaster | 12 mm plaster depth

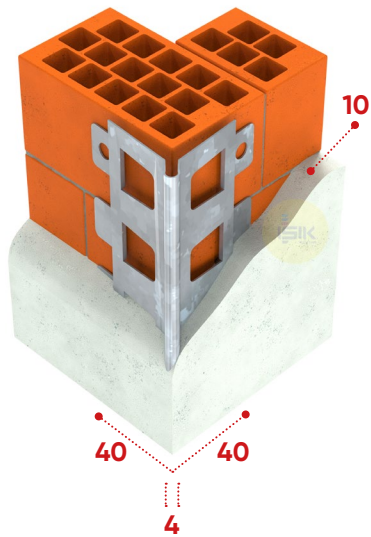
Provides true and straight arris. Prevents chipping and cracking to vulnerable corners.
*Please refer to "Materials" page in order to avoid any corrosion problem.



Article Number	Material Thickness	Standards	Lengths	Pack /Pallet
G10705503	0.50 mm Z275	EN 13658-1	225, 250, 260, 270, 275, 280, 300 cm	15pcs / 80shf

+ A1070 | Aluminium Natural

A10709503	0.50 mm	-	225, 250, 260, 270, 275, 280, 300 cm	15pcs / 80shf
-----------	---------	---	--------------------------------------	---------------



G1080

Galvanised Steel
Corner Bead
round edge

40x40 mm wings | Square hole
Interior plaster | 10 mm plaster depth

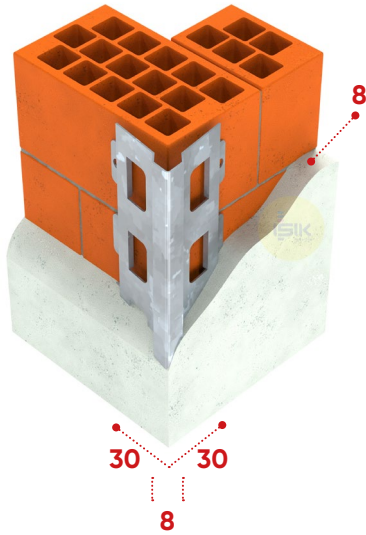
Provides true and straight arris. Prevents chipping and cracking to vulnerable corners.
*Please refer to "Materials" page in order to avoid any corrosion problem.



Article Number	Material Thickness	Standards	Lengths	Pack /Pallet
G10805503	0.50 mm Z275	EN 13658-1	225, 250, 260, 270, 275, 280, 300 cm	15pcs / 80shf

+ A1080 | Aluminium Natural

A10809503	0.50 mm	-	225, 250, 260, 270, 275, 280, 300 cm	15pcs / 80shf
-----------	---------	---	--------------------------------------	---------------



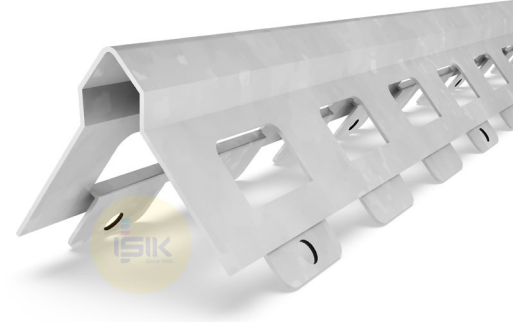
G1090

Galvanised Steel
Corner Bead
angular edge

30x30 mm wings | Square hole
Interior plaster | 8 mm plaster depth

Provides true and straight arris. Prevents chipping and cracking to vulnerable corners.

*Please refer to "Materials" page in order to avoid any corrosion problem.

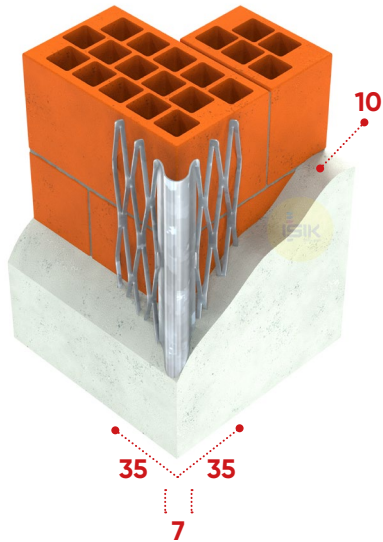


Article Number	Material Thickness	Standards	Lengths	Pack /Pallet
G10905503	0.50 mm Z275	EN 13658-1	200, 225, 250, 260, 270, 275, 280, 300 cm	25pcs / 80shf

A1090

Aluminium Natural

Article Number	Material Thickness	Standards	Lengths	Pack /Pallet
A10909503	0.50 mm	-	200, 225, 250, 260, 270, 275, 280, 300 cm	25pcs / 80shf



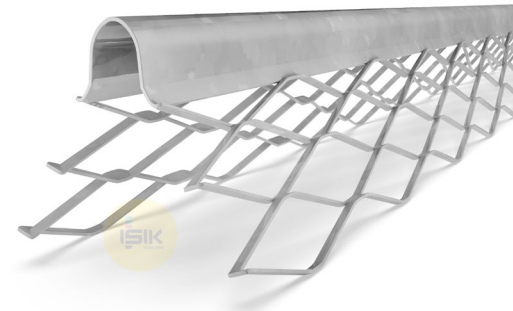
G1000

Galvanised Steel
Corner Bead
round edge

35x35 mm wings | 5 mesh
Interior plaster | 10 mm plaster depth

Provides true and straight arris. Prevents chipping and cracking to vulnerable corners. The expanded metal meshes ensure that the bead is firmly embedded in the plaster. Flanges can be easily flexed over irregular, uneven surfaces with a significant cost advantage.

*Please refer to "Materials" page in order to avoid any corrosion problem.

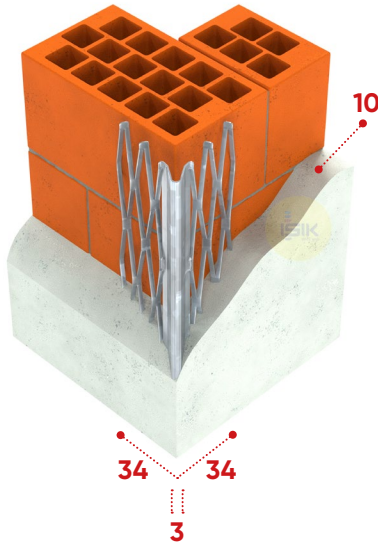
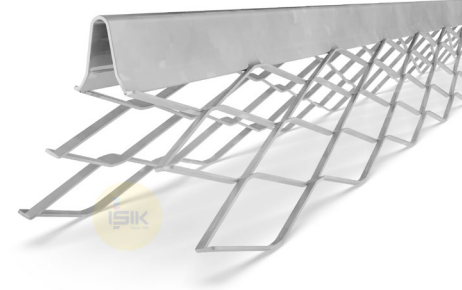


Article Number	Material Thickness	Standards	Lengths	Pack /Pallet
G10005500	0.50 mm Z275	EN 13658-1	150, 160, 180, 200, 220, 225, 240, 250, 260, 270, 275, 280, 300 cm	25pcs /100bun (G10005501): 50pcs /50cts

G1010

Galvanised Steel
Corner Bead
round edge

34x34 mm wings | 5 mesh
Interior plaster | 10 mm plaster depth



Provides true and straight arris. Prevents chipping and cracking to vulnerable corners. The expanded metal meshes ensure that the bead is firmly embedded in the plaster. Flanges can be easily flexed over irregular, uneven surfaces with a significant cost advantage.

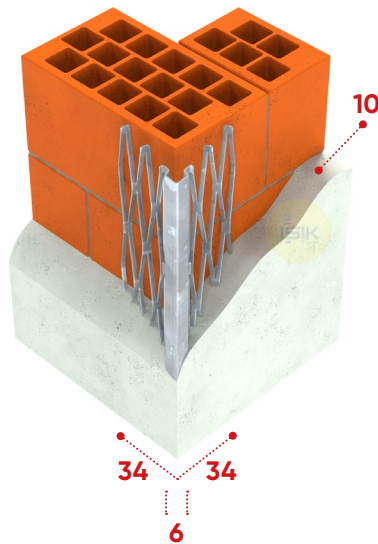
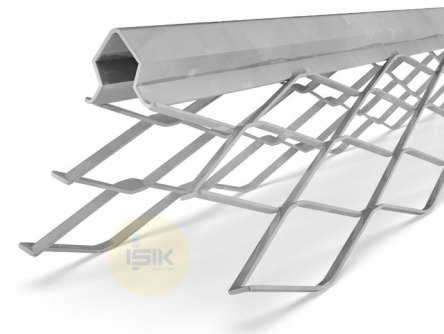
*Please refer to "Materials" page in order to avoid any corrosion problem.

Article Number	Material Thickness	Standards	Lengths	Pack /Pallet
G10105500	0.50 mm Z275	EN 13658-1	150, 160, 180, 200, 220, 225, 240, 250, 260, 270, 275, 280, 300 cm	25pcs /100bun (G10105501: 50pcs / 50cts)
G10105300	0.40 mm Z275	EN 13658-1	150, 160, 180, 200, 220, 225, 240, 250, 260, 270, 275, 280, 300 cm	25pcs /100bun (G10105301: 50pcs / 50cts)
G10101300	0.40 mm Z100	-	150, 160, 180, 200, 220, 225, 240, 250, 260, 270, 275, 280, 300 cm	25pcs /100bun (G10101301: 50pcs / 50cts)
G10100200	0.35 mm Z60	-	150, 160, 180, 200, 220, 225, 240, 250, 260, 270, 275, 280, 300 cm	25pcs /100bun (G10100201: 50pcs / 50cts) (G10100202: 100pcs / 25cts)

G1020

Galvanised Steel
Corner Bead
angular edge

34x34 mm wings | 5 mesh
Interior plaster | 10 mm plaster depth



Provides true and straight arris. Prevents chipping and cracking to vulnerable corners. The expanded metal meshes ensure that the bead is firmly embedded in the plaster. Flanges can be easily flexed over irregular, uneven surfaces with a significant cost advantage.

*Please refer to "Materials" page in order to avoid any corrosion problem.

Article Number	Material Thickness	Standards	Lengths	Pack /Pallet
G10205500	0.50 mm Z275	EN 13658-1	150, 160, 180, 200, 220, 225, 240, 250, 260, 270, 275, 280, 300 cm	25pcs /100bun (G10205501: 50pcs / 50cts)
G10205300	0.40 mm Z275	EN 13658-1	150, 160, 180, 200, 220, 225, 240, 250, 260, 270, 275, 280, 300 cm	25pcs /100bun (G10205301: 50pcs / 50cts)
G10201300	0.40 mm Z100	-	150, 160, 180, 200, 220, 225, 240, 250, 260, 270, 275, 280, 300 cm	25pcs /100bun (G10201301: 50pcs / 50cts)
G10200200	0.35 mm Z60	-	150, 160, 180, 200, 220, 225, 240, 250, 260, 270, 275, 280, 300 cm	25pcs /100bun (G10200201: 50pcs / 50cts) (G10200202: 100pcs / 25cts)

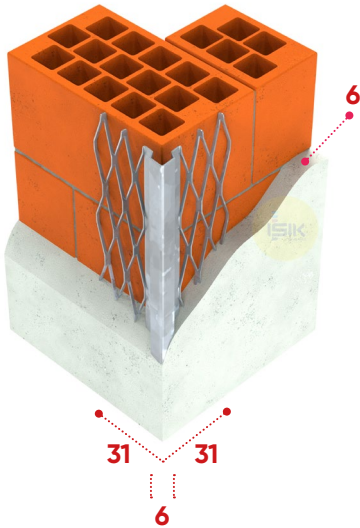
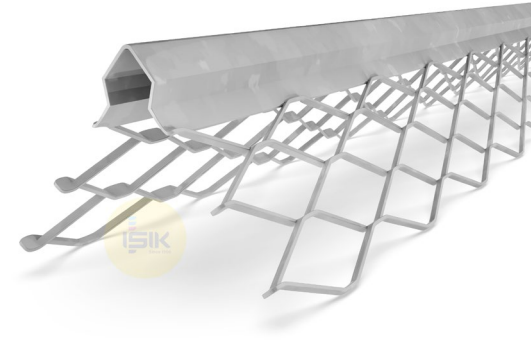
G1021

Galvanised Steel
Corner Bead
angular edge

31x31 mm wings | 5 mesh
Interior plaster | 6 mm plaster depth

Provides true and straight arris. Prevents chipping and cracking to vulnerable corners. The expanded metal meshes ensure that the bead is firmly embedded in the plaster. Flanges can be easily flexed over irregular, uneven surfaces with a significant cost advantage.

*Please refer to "Materials" page in order to avoid any corrosion problem.



Article Number	Material Thickness	Standards	Lengths	Pack /Pallet
G10215500	0.50 mm Z275	EN 13658-1	150, 160, 180, 200, 220, 225, 240, 250, 260, 270, 275, 280, 300 cm	25pcs /100bun (G10215501: 50pcs / 50cts) (G10215502: 100pcs / 25cts)
G10215300	0.40 mm Z275	EN 13658-1	150, 160, 180, 200, 220, 225, 240, 250, 260, 270, 275, 280, 300 cm	25pcs /100bun (G10215301: 50pcs / 50cts) (G10215302: 100pcs / 25cts)
G10211300	0.40 mm Z100	-	150, 160, 180, 200, 220, 225, 240, 250, 260, 270, 275, 280, 300 cm	25pcs /100bun (G10211301: 50pcs / 50cts) (G10211302: 100pcs / 25cts)
G10210200	0.35 mm Z60	-	150, 160, 180, 200, 220, 225, 240, 250, 260, 270, 275, 280, 300 cm	25pcs /100bun (G10210201: 50pcs / 50cts) (G10210202: 100pcs / 25cts)

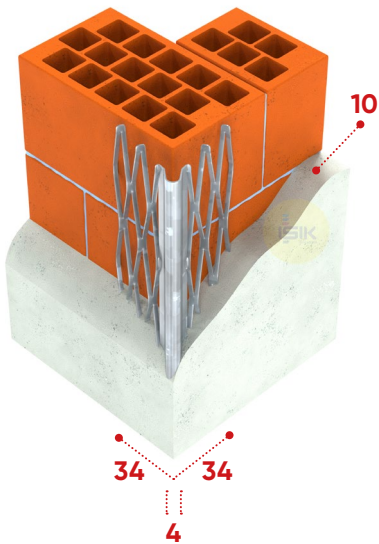
G1030

Galvanised Steel
Corner Bead
round edge

34x34 mm wings | 5 mesh
Interior plaster | 10 mm plaster depth

Provides true and straight arris. Prevents chipping and cracking to vulnerable corners. The expanded metal meshes ensure that the bead is firmly embedded in the plaster. Flanges can be easily flexed over irregular, uneven surfaces with a significant cost advantage.

*Please refer to "Materials" page in order to avoid any corrosion problem.

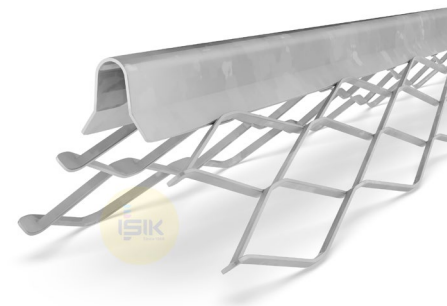
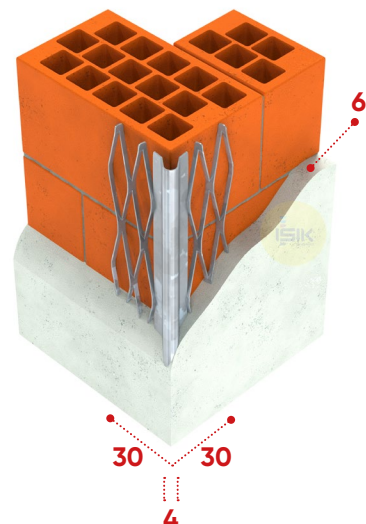


Article Number	Material Thickness	Standards	Lengths	Pack /Pallet
G10305500	0.50 mm Z275	EN 13658-1	150, 160, 180, 200, 220, 225, 240, 250, 260, 270, 275, 280, 300 cm	25pcs /100bun (G10305501: 50pcs / 50cts) (G10305502: 100pcs / 25cts)
G10305300	0.40 mm Z275	EN 13658-1	150, 160, 180, 200, 220, 225, 240, 250, 260, 270, 275, 280, 300 cm	25pcs /100bun (G10305301: 50pcs / 50cts) (G10305302: 100pcs / 25cts)
G10301300	0.40 mm Z100	-	150, 160, 180, 200, 220, 225, 240, 250, 260, 270, 275, 280, 300 cm	25pcs /100bun (G10301301: 50pcs / 50cts) (G10301302: 100pcs / 25cts)
G10300200	0.35 mm Z60	-	150, 160, 180, 200, 220, 225, 240, 250, 260, 270, 275, 280, 300 cm	25pcs /100bun (G10300201: 50pcs / 50cts) (G10300202: 100pcs / 25cts)

G1031

Galvanised Steel
Corner Bead
round edge

30x30 mm wings | 4 mesh
Interior plaster | 6 mm plaster depth



Provides true and straight arris. Prevents chipping and cracking to vulnerable corners. The expanded metal meshes ensure that the bead is firmly embedded in the plaster. Flanges can be easily flexed over irregular, uneven surfaces with a significant cost advantage.

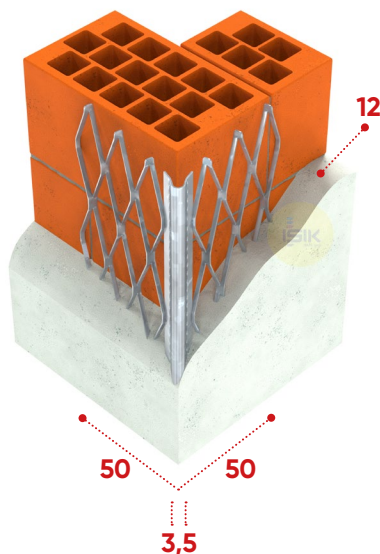
*Please refer to "Materials" page in order to avoid any corrosion problem.

Article Number	Material Thickness	Standards	Lengths	Pack /Pallet
G10315500	0.50 mm Z275	EN 13658-1	150, 160, 180, 200, 220, 225, 240, 250, 260, 270, 275, 280, 300 cm	25pcs /100bun (G10315501: 50pcs / 50cts) (G10315502: 100pcs / 25cts)
G10315300	0.40 mm Z275	EN 13658-1	150, 160, 180, 200, 220, 225, 240, 250, 260, 270, 275, 280, 300 cm	25pcs /100bun (G10315301: 50pcs / 50cts) (G10315302: 100pcs / 25cts)
G10311300	0.40 mm Z100	-	150, 160, 180, 200, 220, 225, 240, 250, 260, 270, 275, 280, 300 cm	25pcs /100bun (G10311301: 50pcs / 50cts) (G10311302: 100pcs / 25cts)
G10310200	0.35 mm Z60	-	150, 160, 180, 200, 220, 225, 240, 250, 260, 270, 275, 280, 300 cm	25pcs /100bun (G10310201: 50pcs / 50cts) (G10310202: 100pcs / 25cts)

G1040

Galvanised Steel
Corner Bead
round edge

50x50 mm wings | 6 mesh
Interior plaster | 12 mm plaster depth



Provides true and straight arris. Prevents chipping and cracking to vulnerable corners. The expanded metal meshes ensure that the bead is firmly embedded in the plaster. Flanges can be easily flexed over irregular, uneven surfaces with a significant cost advantage.

*Please refer to "Materials" page in order to avoid any corrosion problem.

Article Number	Material Thickness	Standards	Lengths	Pack /Pallet
G10405500	0.50 mm Z275	EN 13658-1	250, 260, 270, 280, 300 cm	25pcs /100bun (G10405501: 50pcs / 50cts) (G10405502: 100pcs / 25cts)
G10405300	0.40 mm Z275	EN 13658-1	250, 260, 270, 280, 300 cm	25pcs /100bun (G10405301: 50pcs / 50cts) (G10405302: 100pcs / 25cts)
G10401300	0.40 mm Z100	-	250, 260, 270, 280, 300 cm	25pcs /100bun (G10401301: 50pcs / 50cts) (G10401302: 100pcs / 25cts)
G10400200	0.35 mm Z60	-	250, 260, 270, 280, 300 cm	25pcs /100bun (G10400201: 50pcs / 50cts) (G10400202: 100pcs / 25cts)

A1040 Aluminium Natural

A10409500	0.50 mm	-	250, 260, 270, 280, 300 cm	25pcs /100bun (A10409501: 50pcs / 50cts) (A10409502: 100pcs / 25cts)
-----------	---------	---	----------------------------	--

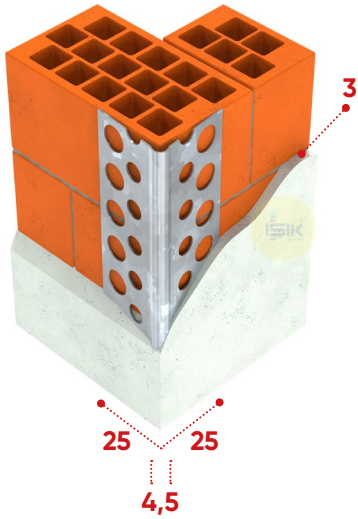
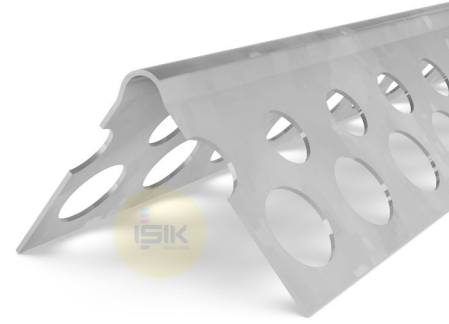
G1050

Galvanised Steel
Corner Bead
smooth surface

25x25 mm wings
Interior plaster | 3 mm plaster depth

Designed for use with one coat plaster work to a thin finish. Perforated wings to provide an excellent plastering key for slab, block work or rough surfaces, which need a thin coat finish.

*Please refer to "Materials" page in order to avoid any corrosion problem.



Article Number	Material Thickness	Standards	Lengths	Pack /Pallet
G10505505	0,50 mm Z275	EN 13658-1	250, 260, 270, 280, 300 cm	25pcs / 100pep

+ G1051 Galvanised Steel embossed surface

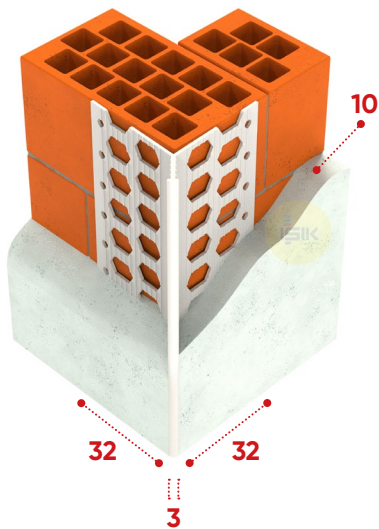
G10515505	0,50 mm Z275	EN 13658-1	250, 260, 270, 280, 300 cm	25pcs / 100pep
-----------	--------------	------------	----------------------------	----------------

+ A1050 Aluminium Natural smooth surface

A10509305	0,40 mm	EN 13658-1	250, 260, 270, 280, 300 cm	25pcs / 100pep
-----------	---------	------------	----------------------------	----------------

+ A1051 Aluminium Natural embossed surface

A10519305	0,40 mm	EN 13658-1	250, 260, 270, 280, 300 cm	25pcs / 100pep
-----------	---------	------------	----------------------------	----------------



P1000

PVCu
Corner Bead
visible nose

32x32 mm wings | 85 ± 2 g/m weight
Interior / Exterior plaster | 10 mm plaster depth

Provides true and sharp interior - exterior plastered corners. Its strong rigid aris protects and reinforces plaster against impact. Visible aris: 3 mm



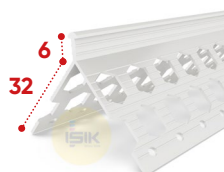
Article Number	Colour	Lengths	Pack /Pallet
P100000W8	White	250, 300 cm	25pcs /40cts (P100000W1: 50pcs / 20cts)

+ P1001 8 mm plaster depth | 80 ± 2 g/m weight

P100100W8	White	250, 300 cm	25pcs /40cts (P100100W1: 50pcs / 20cts)
-----------	-------	-------------	---

+ P1002 6 mm plaster depth | 75 ± 2 g/m weight

P100200W8	White	250, 300 cm	25pcs /40cts (P100200W1: 50pcs / 20cts)
-----------	-------	-------------	---

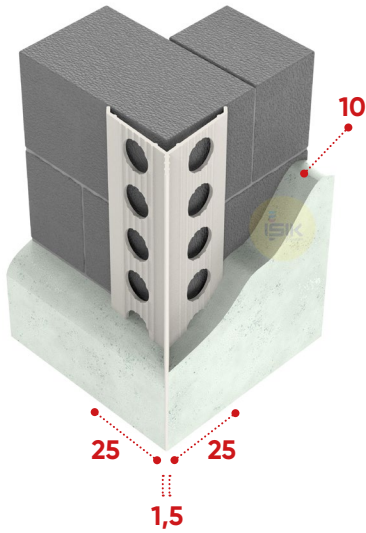


P1020

PVCu
Corner Bead
visible nose

25x25 mm wings | 82 ± 2 g/m weight
Exterior plaster | 10 mm plaster depth

Provides true and sharp exterior plastered corners. Its strong rigid arris protects and reinforces plaster against impact.
Visible arris: 1,5 mm



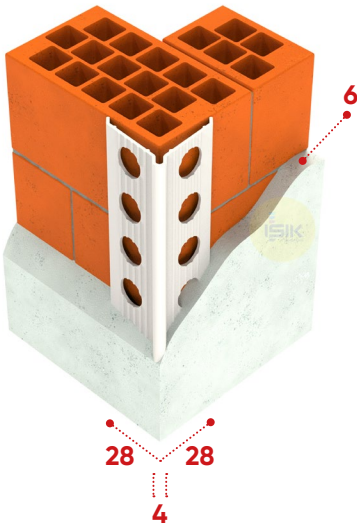
Article Number	Colour	Lengths	Pack /Pallet
P10200W0	White	250 cm	50pcs / 120bun (P10200W1: 100pcs / 60cts)

P1030

PVCu
Corner Bead
round edge

28x28 mm wings | 82 ± 2 g/m weight
Interior / Exterior plaster | 6 mm plaster depth

Provides true and round interior - exterior plastered corners.



Article Number	Colour	Lengths	Pack /Pallet
P10300W0	White	200, 250, 260, 265, 270, 280, 300 cm	100pcs / 60cts

⊕ P1031 | 25x25 mm wings | 60 ± 2 g/m weight

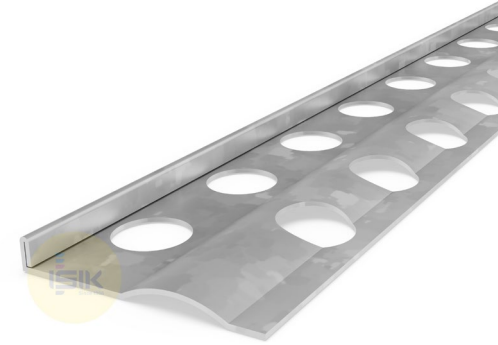
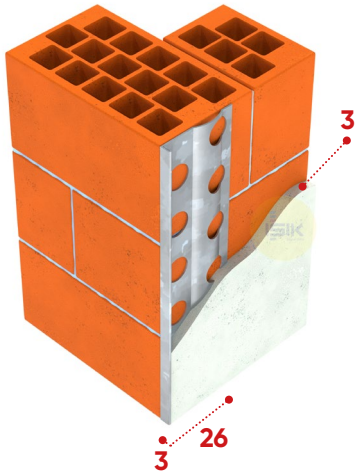
P10310W0	White	200, 250, 260, 265, 270, 280, 300 cm	100pcs / 60cts
----------	-------	--------------------------------------	----------------

G1200

Galvanised Steel
Stop Bead
perforated

3x26 mm wings
Interior plaster | 3 mm plaster depth

Provides clean, neat edges at openings, abutment of walls and ceiling finishes.
*Please refer to "Materials" page in order to avoid any corrosion problem.



Article Number	Material Thickness	Standards	Lengths	Pack /Pallet	
G12005500	0.50 mm Z275	EN 13658-1	250, 260, 270, 280, 300 cm	25pcs /140bun	(G12005501: 50pcs / 70cts)
G12005300	0.40 mm Z275	EN 13658-1	250, 260, 270, 280, 300 cm	25pcs /140bun	(G12005301: 50pcs / 70cts)

A1200

Aluminium Natural

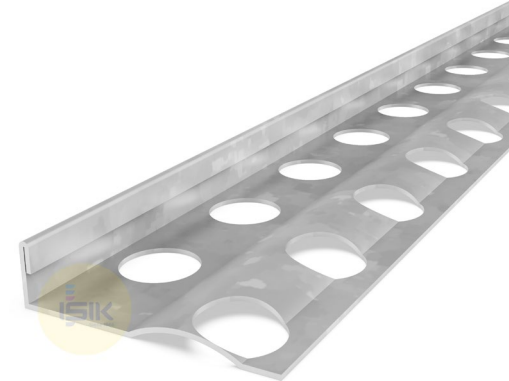
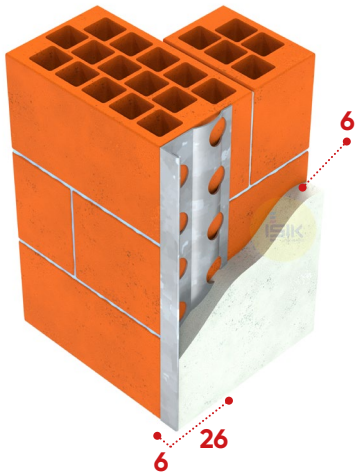
A12009500	0.50 m	-	250, 260, 270, 280, 300 cm	25pcs /144bun	(A12009501: 50pcs / 72cts)
-----------	--------	---	----------------------------	------------------	----------------------------

G1210

Galvanised Steel
Stop Bead
perforated

6x26 mm wings
Interior plaster | 6 mm plaster depth

Provides clean, neat edges at openings, abutment of walls and ceiling finishes.
*Please refer to "Materials" page in order to avoid any corrosion problem.



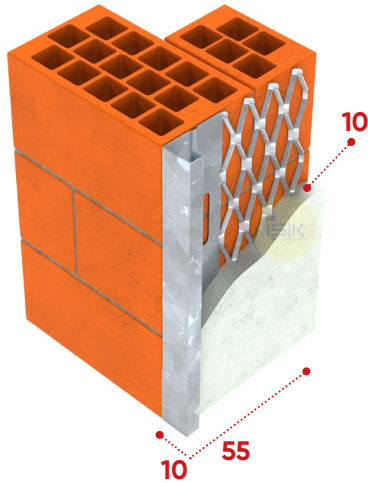
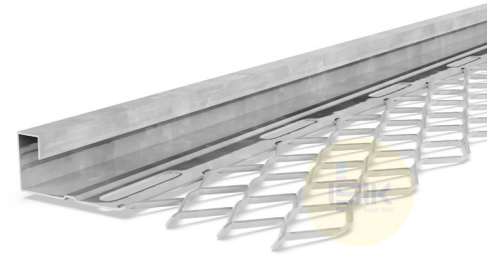
Article Number	Material Thickness	Standards	Lengths	Pack /Pallet	
G12105500	0.50 mm Z275	EN 13658-1	250, 260, 270, 280, 300 cm	25pcs /100bun	(G12105501: 50pcs / 50cts)
G12105300	0.40 mm Z275	EN 13658-1	250, 260, 270, 280, 300 cm	25pcs /100bun	(G12105301: 50pcs / 50cts)

G1220

Galvanised Steel
Stop Bead
expanded mesh

10x55 mm wings | 7 mesh
Interior plaster | 10 mm plaster depth

Provides clean, neat edges at openings, abutment of walls and ceiling finishes.
*Please refer to "Materials" page in order to avoid any corrosion problem.



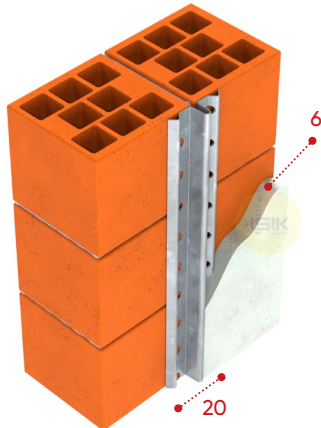
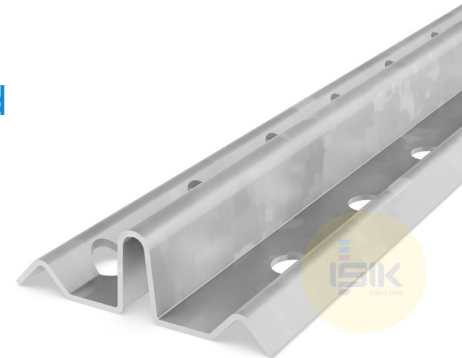
Article Number	Material Thickness	Standards	Lengths	Pack /Pallet
G12205500	0.50 mm Z275	EN 13658-1	250, 260, 270, 280, 300 cm	25pcs /70bun (G12205501: 50pcs / 35cts)

G1400

Galvanised Steel
Depth Gauge Bead

Interior plaster | 6 mm plaster depth

Flatness guide bead to create quick, exact and even plaster surfaces.
*Please refer to "Materials" page in order to avoid any corrosion problem.



Article Number	Material Thickness	Standards	Lengths	Pack /Pallet
G14005501	0.50 mm Z275	EN 13658-1	220, 250, 260, 270, 275, 280, 300 cm	50pcs /80cts
G14005301	0.40 mm Z275	EN 13658-1	220, 250, 260, 270, 275, 280, 300 cm	50pcs /80cts
G14001301	0.40 mm Z100	-	220, 250, 260, 270, 275, 280, 300 cm	50pcs /80cts
G14001200	0.35 mm Z100	-	220, 250, 260, 270, 275, 280, 300 cm	50pcs /80bun (G14001201: 100pcs / 40cts)
G14000200	0.35 mm Z60	-	220, 250, 260, 270, 275, 280, 300 cm	50pcs /80bun (G14000201: 100pcs / 40cts)

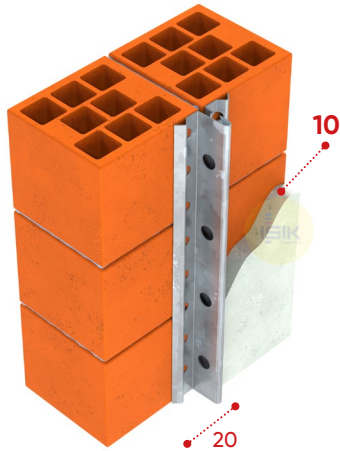
⊕ A1400 Aluminium Natural

A14009300	0.40 mm	-	220, 250, 260, 270, 275, 280, 300 cm	50pcs /80bun (A14009301: 100pcs /40cts)
A14009200	0.35 mm	-	220, 250, 260, 270, 275, 280, 300 cm	50pcs /80bun (A14009201: 100pcs /40cts)

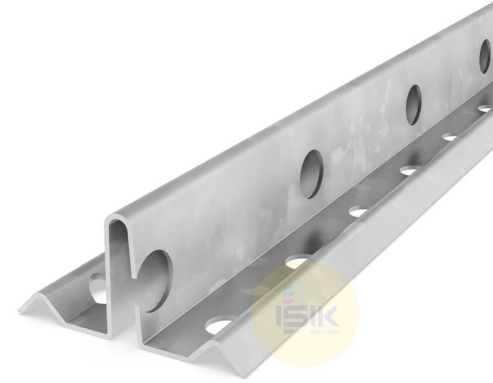
G1410

Galvanised Steel Depth Gauge Bead

Interior plaster | 10 mm plaster depth



Flatness guide bead to create quick, exact and even plaster surfaces.
*Please refer to "Materials" page in order to avoid any corrosion problem.



Article Number	Material Thickness	Standards	Lengths	Pack /Pallet	
G14105501	0.50 mm Z275	EN 13658-1	220, 250, 260, 270, 275, 280, 300 cm	50pcs /64cts	
G14105301	0.40 mm Z275	EN 13658-1	220, 250, 260, 270, 275, 280, 300 cm	50pcs /64cts	
G14101301	0.40 mm Z100	-	220, 250, 260, 270, 275, 280, 300 cm	50pcs /64cts	
G14101200	0.35 mm Z100	-	220, 250, 260, 270, 275, 280, 300 cm	50pcs /64bun	(G14101201: 100pcs / 32cts)
G14100200	0.35 mm Z60	-	220, 250, 260, 270, 275, 280, 300 cm	50pcs /64bun	(G14100201: 100pcs / 32cts)

A1410 | Aluminium Natural

A14109300	0.40 mm	-	220, 250, 260, 270, 275, 280, 300 cm	50pcs /64bun	(A14109301: 100pcs / 32cts)
A14109200	0.35 mm	-	220, 250, 260, 270, 275, 280, 300 cm	50pcs /64bun	(A14109201: 100pcs / 32cts)

DRYLINING

Corner Beads

G4090	A4061
A4001	A4060
G4000	G4061
G4001	P4020
A4011	P4000
G4010	P4009
G4011	P4010
A4020	P4019
A4021	P4030
A4030	P4031
A4031	P4032
G4031	P4033
A4041	A4200
G4051	G4200

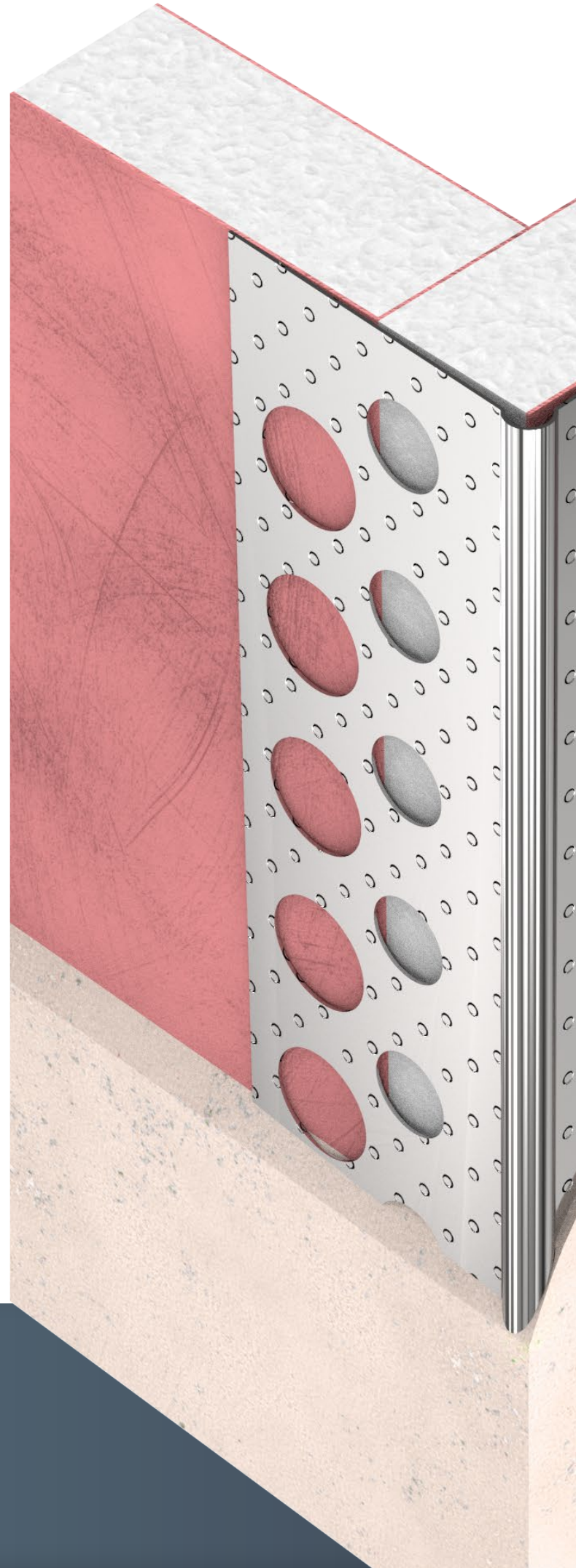
Stop Beads

A4210

Edging Bead

G4210

G: Galvanised Steel | A: Aluminium | P: PVCu



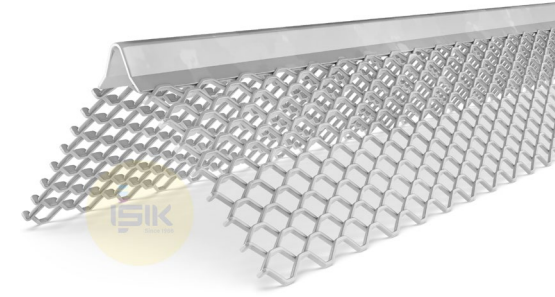
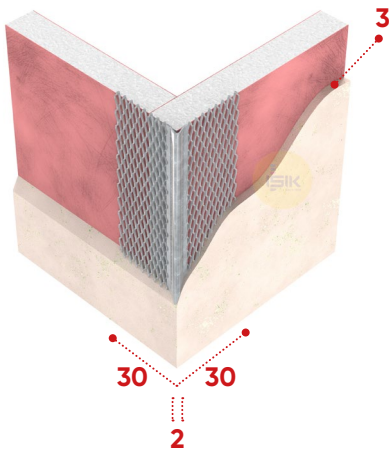
G4090

Galvanised Steel
Corner Bead
mini mesh

30x30 mm wings | Round edge
Dry lining / Interior plaster | 3 mm plaster depth

Designed for use with one coat plaster work to a thin finish.
Fine mesh wings to provide an excellent plastering key for slab, block work or rough surfaces, which need a thin coat finish.

*Please refer to "Materials" page in order to avoid any corrosion problem.



Article Number	Material Thickness	Standards	Lengths	Pack /Pallet
G40905508	0.50 mm Z275	EN 14353	240, 250, 260, 270, 300 cm	50pcs / 100cts
G40905308	0.40 mm Z275	EN 14353	240, 250, 260, 270, 300 cm	50pcs / 100cts
G40901308	0.40 mm Z100	EN 14353	240, 250, 260, 270, 300 cm	50pcs / 100cts
G40901208	0.35 mm Z100	EN 14353	240, 250, 260, 270, 300 cm	50pcs / 100cts

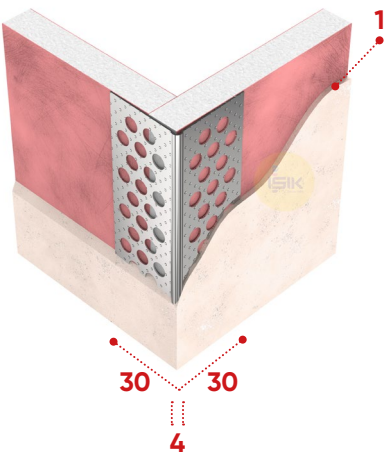
A4001

Aluminium Natural
Corner Bead
embossed surface

30x30 mm wings
Dry lining | 1 mm gypsum depth

Used to joint on drywall edges. Provides a high-quality finish and solid protection at drywall corners. Minimizes cracking at the plasterboard edges.

*Please refer to "Materials" page in order to avoid any corrosion problem.



Article Number	Material Thickness	Standards	Lengths	Pack /Pallet
A40019505	0.50 mm	EN 14353	200, 250, 260, 270, 275, 280, 300 cm	25pcs / 90pep
A40019305	0.40 mm	EN 14353	200, 250, 260, 270, 275, 280, 300 cm	25pcs / 90pep
A40019205	0.35 mm	-	200, 250, 260, 270, 275, 280, 300 cm	25pcs / 90pep

⊕ G4000 Galvanised Steel smooth surface

G40005505	0.50 mm Z275	EN 14353	200, 250, 260, 270, 275, 280, 300 cm	25pcs / 90pep	(G40005508: 50pcs / 50cts)
G40001305	0.40 mm Z100	EN 14353	200, 250, 260, 270, 275, 280, 300 cm	25pcs / 90pep	(G40001308: 50pcs / 50cts)
G40000205	0.35 mm Z60	-	200, 250, 260, 270, 275, 280, 300 cm	25pcs / 90pep	(G40000208: 50pcs / 50cts)

⊕ G4001 Galvanised Steel embossed surface

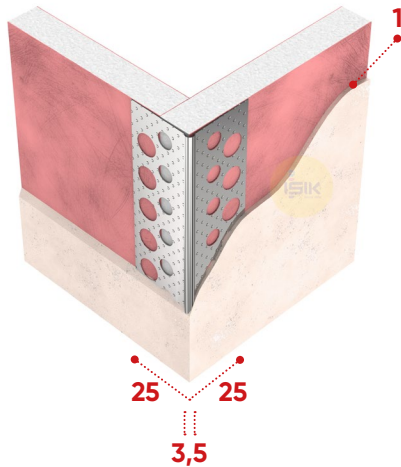
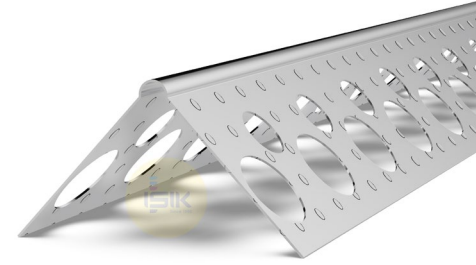
G40015505	0.50 mm Z275	EN 14353	200, 250, 260, 270, 275, 280, 300 cm	25pcs / 90pep	(G40015508: 50pcs / 50cts)
G40011305	0.40 mm Z100	EN 14353	200, 250, 260, 270, 275, 280, 300 cm	25pcs / 90pep	(G40011308: 50pcs / 50cts)
G40010205	0.35 mm Z60	-	200, 250, 260, 270, 275, 280, 300 cm	25pcs / 90pep	(G40010208: 50pcs / 50cts)

A4011

Aluminium Natural
Corner Bead
embossed surface

25x25 mm wings
Dry lining | 1 mm gypsum depth

Used to joint on drywall edges. Provides a high-quality finish and solid protection at drywall corners. Minimizes cracking at the plasterboard edges.
*Please refer to "Materials" page in order to avoid any corrosion problem.



Article Number	Material Thickness	Standards	Lengths	Pack /Pallet
A40119500	0.50 mm	EN 14353	200, 250, 260, 270, 275, 280, 300 cm	25pcs /120bun (A40119501: 50pcs / 60cts) (A40119502: 100pcs / 30cts) (A40119505: 50pcs / 60pep)
A40119300	0.40 mm	EN 14353	200, 250, 260, 270, 275, 280, 300 cm	25pcs /120bun (A40119301: 50pcs / 60cts) (A40119302: 100pcs / 30cts) (A40119305: 50pcs / 60pep)
A40119200	0.35 mm	-	200, 250, 260, 270, 275, 280, 300 cm	25pcs /120bun (A40119201: 50pcs / 60cts) (A40119202: 100pcs / 30cts) (A40119205: 50pcs / 100pep)

G4010 Galvanised Steel smooth surface

G40105500	0.50 mm Z275	EN 14353	200, 250, 260, 270, 275, 280, 300 cm	25pcs /100bun (G40105501: 50pcs / 50cts) (G40105505: 50pcs / 50pep)
G40105300	0.40 mm Z275	EN 14353	200, 250, 260, 270, 275, 280, 300 cmm	25pcs /100bun (G40105301: 50pcs / 50cts) (G40105305: 50pcs / 50pep)
G40101300	0.40 mm Z100	EN 14353	200, 250, 260, 270, 275, 280, 300 cm	25pcs /100bun (G40101301: 50pcs / 50cts) (G40101305: 50pcs / 50pep)
G40101200	0.35 mm Z100	EN 14353	200, 250, 260, 270, 275, 280, 300 cm	25pcs /100bun (G40101201: 50pcs / 50cts) (G40101205: 50pcs / 50pep)
G40100200	0.35 mm Z60	-	200, 250, 260, 270, 275, 280, 300 cm	25pcs /100bun (G40100201: 50pcs / 50cts) (G40100205: 50pcs / 50pep)

G4011 Galvanised Steel embossed surface

G40115300	0.40 mm Z275	EN 14353	200, 250, 260, 270, 275, 280, 300 cm	25pcs /100bun (G40115301: 50pcs / 50cts) (G40115305: 50pcs / 50pep)
G40111200	0.35 mm Z100	EN 14353	200, 250, 260, 270, 275, 280, 300 cm	25pcs /100bun (G40111201: 50pcs / 50cts) (G40111205: 50pcs / 50pep)
G40110100	0.30 mm Z60	-	200, 250, 260, 270, 275, 280, 300 cm	25pcs /100bun (G40110101: 50pcs / 50cts) (G40110105: 50pcs / 50pep)

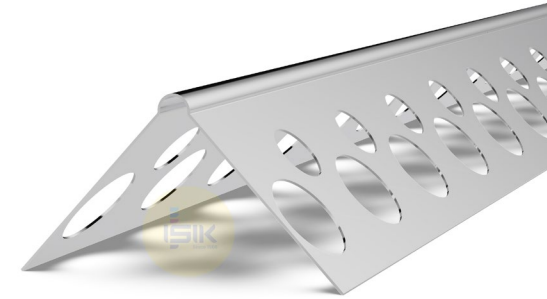
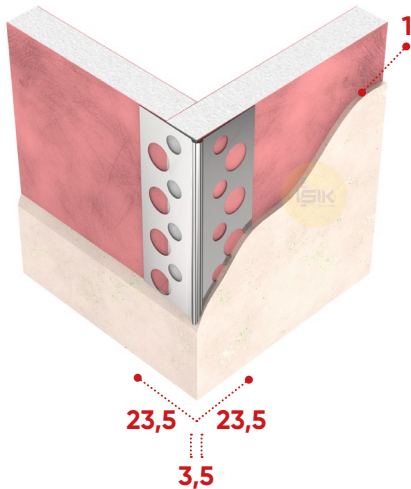
A4020

Aluminium Natural
Corner Bead
smooth surface

23,5x23,5 mm wings
Dry lining | 1 mm gypsum depth

Used to joint on drywall edges. Provides a high-quality finish and solid protection at drywall corners. Minimizes cracking at the plasterboard edges.

*Please refer to "Materials" page in order to avoid any corrosion problem.



Article Number	Material Thickness	Standards	Lengths	Pack /Pallet	
A40209400	0.45 mm	EN 14353	200, 250, 260, 270, 275, 280, 300 cm	50pcs /160bun	(A40209401: 100pcs / 80cts) (A40209402: 200pcs / 40cts) (A40209405: 50pcs / 150pep)
A40209300	0.40 mm	EN 14353	200, 250, 260, 270, 275, 280, 300 cm	50pcs /160bun	(A40209301: 100pcs / 80cts) (A40209302: 200pcs / 40cts) (A40209305: 50pcs / 150pep)

+ A4021 Aluminium Natural embossed surface

A40219300	0.40 mm	EN 14353	200, 250, 260, 270, 275, 280, 300 cm	50pcs /160bun	(A40219301: 100pcs / 80cts) (A40219302: 200pcs / 40cts) (A40219305: 50pcs / 150pep)
A40219200	0.35 mm	-	200, 250, 260, 270, 275, 280, 300 cm	50pcs /160bun	(A40219201: 100pcs / 80cts) (A40219202: 200pcs / 40cts) (A40219205: 50pcs / 150pep)

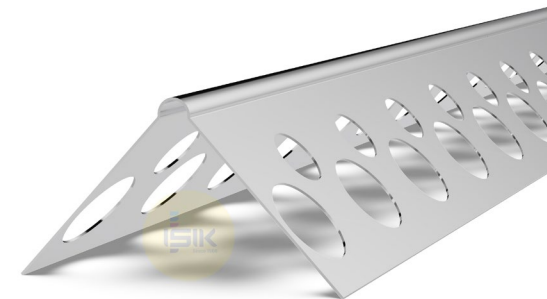
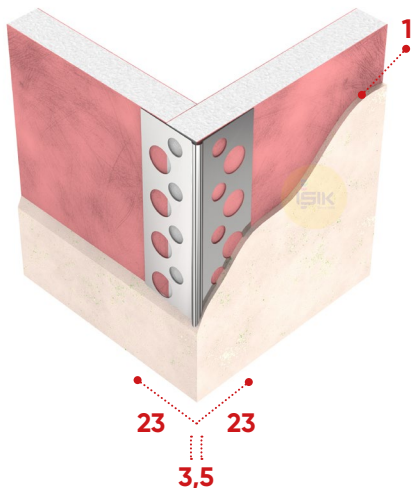
A4030

Aluminium Natural
Corner Bead
smooth surface

23x23 mm wings
Dry lining | 1 mm gypsum depth

Used to joint on drywall edges. Provides a high-quality finish and solid protection at drywall corners. Minimizes cracking at the plasterboard edges.

*Please refer to "Materials" page in order to avoid any corrosion problem.



Article Number	Material Thickness	Standards	Lengths	Pack /Pallet	
A40309200	0.35 mm	-	200, 250, 260, 270, 275, 280, 300 cm	50pcs /160bun	(A40309201: 100pcs / 80cts) (A40309202: 200pcs / 40cts) (A40309205: 50pcs / 150pep)
A40309100	0.30 mm	-	200, 250, 260, 270, 275, 280, 300 cm	50pcs /160bun	(A40309101: 100pcs / 80cts) (A40309102: 200pcs / 40cts) (A40309105: 50pcs / 150pep)

+ A4031 Aluminium Natural embossed surface

A40319200	0.35 mm	-	200, 250, 260, 270, 275, 280, 300 cm	50pcs /160bun	(A40319201: 100pcs / 80cts) (A40319202: 200pcs / 40cts) (A40319205: 50pcs / 150pep)
A40319100	0.30 mm	-	200, 250, 260, 270, 275, 280, 300 cm	50pcs /160bun	(A40319101: 100pcs / 80cts) (A40319102: 200pcs / 40cts) (A40319105: 50pcs / 150pep)

+ G4031 Galvanised Steel embossed surface

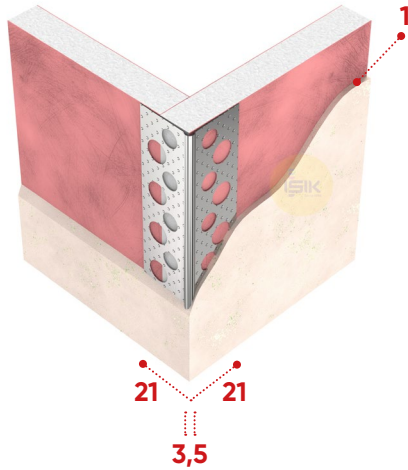
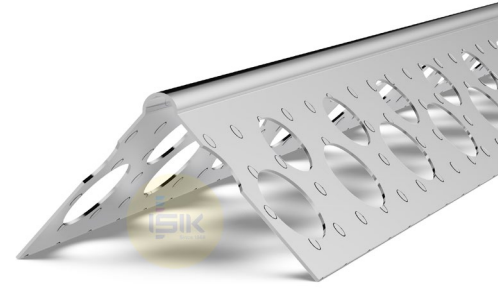
G40315300	0.40 mm Z275	EN 14353	200, 250, 260, 270, 275, 280, 300 cm	50pcs /160bun	(G40315301: 100pcs / 80cts) (G40315305: 50pcs / 150pep)
G40311200	0.35 mm Z100	EN 14353	200, 250, 260, 270, 275, 280, 300 cm	50pcs /160bun	(G40311201: 100pcs / 80cts) (G40311205: 50pcs / 150pep)
G40310100	0.30 mm Z60	-	200, 250, 260, 270, 275, 280, 300 cm	50pcs /160bun	(G40310101: 100pcs / 80cts) (G40310105: 50pcs / 150pep)

A4041

Aluminium Natural
Corner Bead
embossed surface

21x21 mm wings
Dry lining | 1 mm gypsum depth

Used to joint on drywall edges. Provides a high-quality finish and solid protection at drywall corners. Minimizes cracking at the plasterboard edges.
**Please refer to "Materials" page in order to avoid any corrosion problem.*



Article Number	Material Thickness	Standards	Lengths	Pack /Pallet
A40419100	0.30 mm	-	200, 250, 260, 270, 275, 280, 300 cm	50pcs /160bun (A40419101: 100pcs / 80cts) (A40419102: 200pcs / 40cts) (A40419105: 50pcs / 150pep)

G4041

Galvanised Steel embossed surface

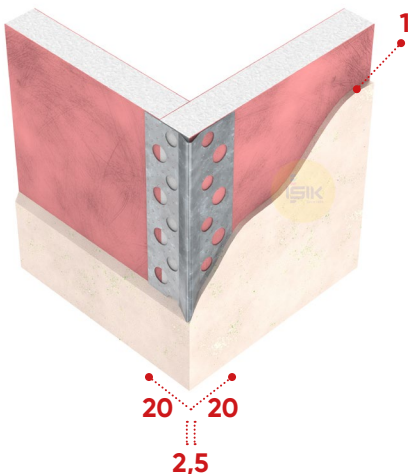
G40411100	0.30 mm Z60	-	200, 250, 260, 270, 275, 280, 300 cm	50pcs /160bun
-----------	-------------	---	--------------------------------------	---------------

G4051

Galvanised Steel
Corner Bead
embossed surface

20x20 mm wings
Dry lining | 1 mm gypsum depth

Used to joint on drywall edges. Provides a high-quality finish and solid protection at drywall corners. Minimizes cracking at the plasterboard edges.
**Please refer to "Materials" page in order to avoid any corrosion problem.*



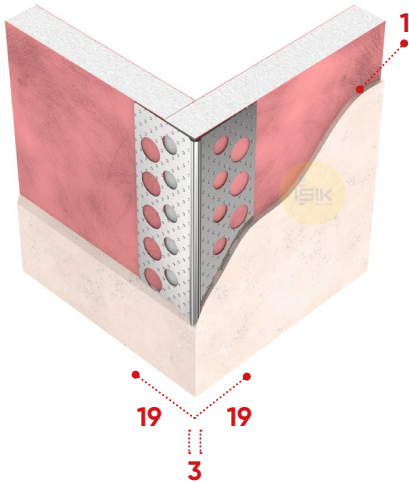
Article Number	Material Thickness	Standards	Lengths	Pack /Pallet
G40511200	0.35 mm Z100	EN 14353	200, 250, 260, 270, 275, 280, 300 cm	50pcs / 160bun
G40510100	0.30 mm Z60	-	200, 250, 260, 270, 275, 280, 300 cm	50pcs / 160bun
G40510800	0.25 mm Z60	-	200, 250, 260, 270, 275, 280, 300 cm	50pcs / 160bun
G40510900	0.20 mm Z60	-	200, 250, 260, 270, 275, 280, 300 cm	50pcs / 160bun

A4061

Aluminium Natural
Corner Bead
embossed surface

19x19 mm wings
Dry lining | 1 mm gypsum depth

Used to joint on drywall edges. Provides a high-quality finish and solid protection at drywall corners. Minimizes cracking at the plasterboard edges.
**Please refer to "Materials" page in order to avoid any corrosion problem.*



Article Number	Material Thickness	Standards	Lengths	Pack /Pallet
A40619000	0.28 mm	-	200, 250, 260, 270, 275, 280, 300 cm	50pcs /160bun (A40619001: 100pcs / 80cts) (A40619002: 200pcs / 40cts) (A40619005: 50pcs / 150pep)

A4060

Aluminium Natural smooth surface

Article Number	Material Thickness	Standards	Lengths	Pack /Pallet
A40609000	0.28 mm	-	200, 250, 260, 270, 275, 280, 300 cm	50pcs /160bun (A40609001: 100pcs / 80cts) (A40609002: 200pcs / 40cts) (A40609005: 50pcs / 150pep)

G4061

Galvanised Steel embossed surface

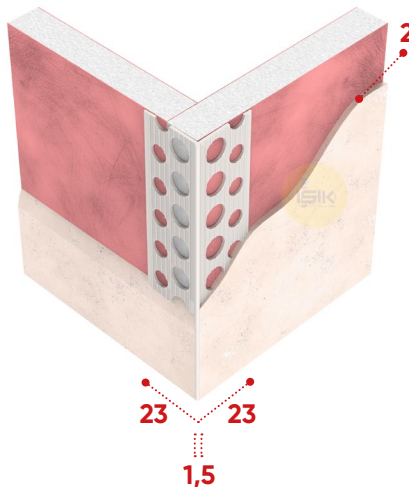
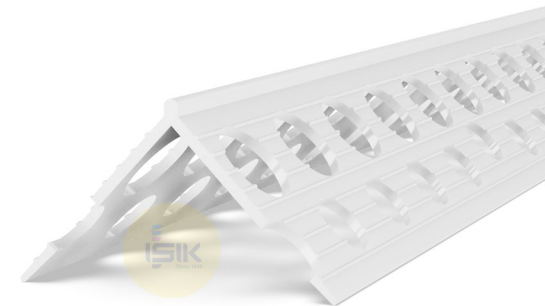
Article Number	Material Thickness	Standards	Lengths	Pack /Pallet
G40610800	0.25 mm Z60	-	200, 250, 260, 270, 275, 280, 300 cm	50pcs /160bun

P4020

PVCu
Corner Bead
perfect edge

23x23 mm wings | 50 ± 2 g/m weight
Dry lining | 2 mm gypsum depth

Provides a clean and true corner for drywall edges. Protects and reinforces against cracking.



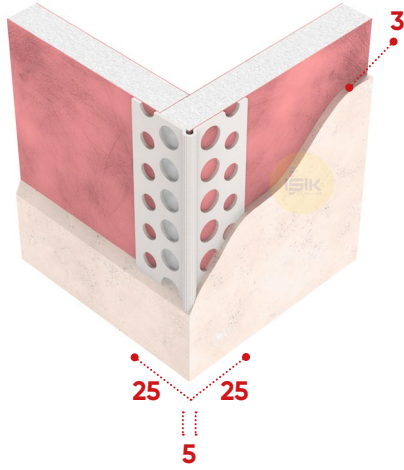
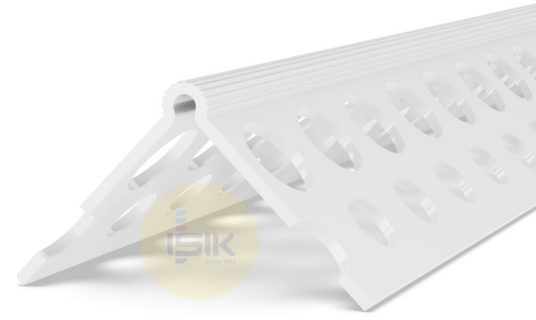
Article Number	Colour	Standards	Lengths	Pack /Pallet
P402000W0	White	250, 260, 270, 275, 280, 300 cm	100pcs / 40bun	(P402000W1: 200pcs / 20cts)

P4000

PVCu
Corner Bead
round edge

25x25 mm wings | 55 ± 2 g/m weight
Dry lining | 3 mm gypsum depth

Provides a clean and true corner for drywall edges. Protects and reinforces against cracking.



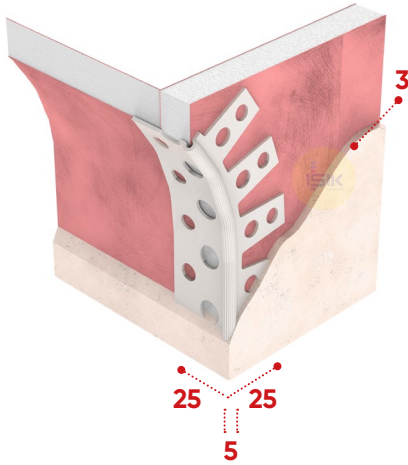
Article Number	Colour	Lengths	Pack /Pallet
P400000W0	White	250, 260, 270, 275, 280, 300 cm	100pcs / 200bun (P400000W8: 100pcs / 75cts)

P4009

PVCu
Arch Bead
round edge

25x25 mm wings | 55 ± 2 g/m weight
Dry lining | 3 mm gypsum depth

Bends to create curved and arched forms in thin coat and dry lining applications.



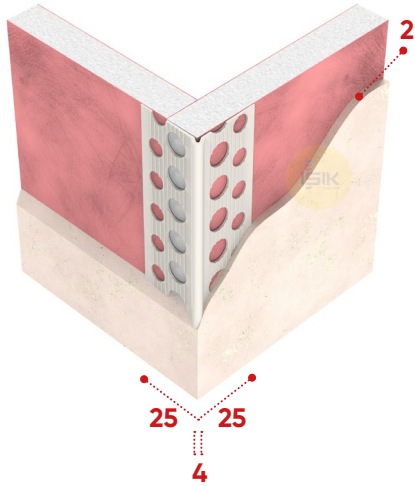
Article Number	Colour	Lengths	Pack /Pallet
P400900W0	White	250, 260, 270, 275, 280, 300 cm	100pcs / 200bun (P400900W8: 100pcs / 75cts)

P4010

PVCu
Corner Bead
round edge

25x25 mm wings | 50 ± 2 g/m weight
Dry lining | 2 mm gypsum depth

Provides a clean and true corner for drywall edges. Protects and reinforces against cracking.



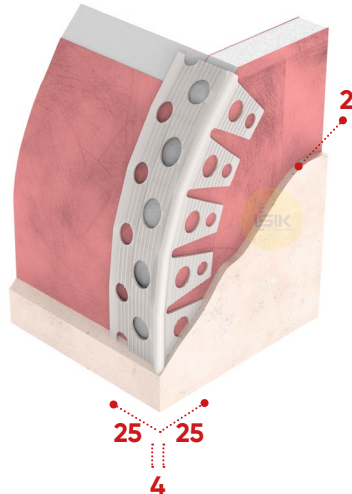
Article Number	Colour	Lengths	Pack /Pallet
P401000W8	White	250, 260, 270, 275, 280, 300 cm	100pcs / 40cts

P4019

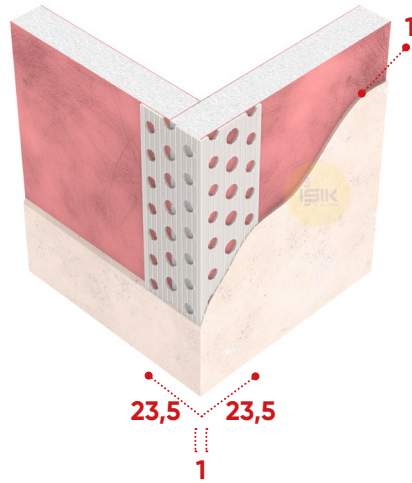
PVCu
Arch Bead
round edge

25x25 mm wings | 50 ± 2 g/m weight
Dry lining | 2 mm gypsum depth

Bends to create ceiling edges along curved walls in dry lining applications.



Article Number	Colour	Lengths	Pack /Pallet
P401900W8	White	250, 260, 270, 275, 280, 300 cm	100pcs / 40cts

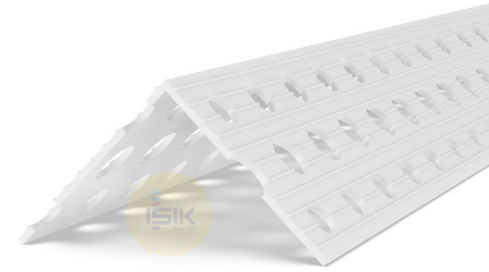


P4030

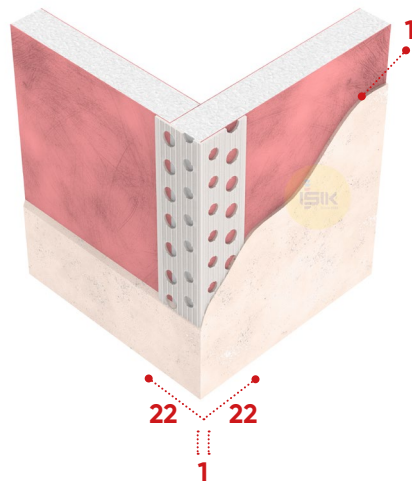
PVCu
Corner Bead
sharp edge

23,5x23,5 mm wings | 55 ± 2 g/m weight
Dry lining | 1 mm gypsum depth

Provides clean, true and sharp corners for drywall edges. Protects and reinforces against cracking.



Article Number	Colour	Lengths	Pack /Pallet
P40300W0	White	250, 260, 270, 275, 280, 300 cm	100pcs / 200bun (P40300W8: 100pcs / 160cts)



P4031

PVCu
Corner Bead
sharp edge

22x22 mm wings | 55 ± 2 g/m weight
Dry lining | 1 mm gypsum depth

Provides clean, true and sharp corners for drywall edges. Protects and reinforces against cracking.



Article Number	Colour	Lengths	Pack /Pallet
P403100W0	White	250, 260, 270, 275, 280, 300 cm	100pcs / 200bun (P403100W8: 100pcs / 160cts)

⊕ P4032 | 21x21 mm wings | 45 ± 2 g/m weight

P403200W0	White	250, 260, 270, 275, 280, 300 cm	100pcs / 200bun (P403200W8: 100pcs / 160cts)
-----------	-------	---------------------------------	--

⊕ P4033 | 19x19 mm wings | 39 ± 2 g/m weight

P403300W0	White	250, 260, 270, 275, 280, 300 cm	100pcs / 200bun (P403300W8: 100pcs / 160cts)
-----------	-------	---------------------------------	--



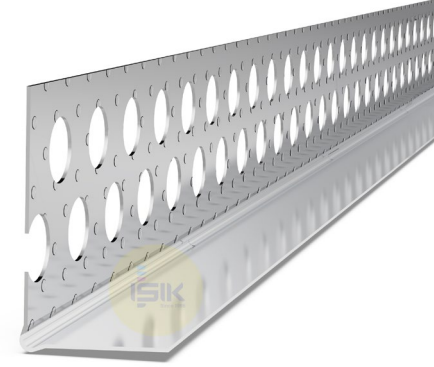
A4200

Aluminium Natural
Stop Bead L
embossed surface

13,5x23 mm wings | 12,5 mm plasterboard
Dry lining | 1 mm gypsum depth

Used to form single edges at plastered junctions, eg. sliding ceiling and wall connections.

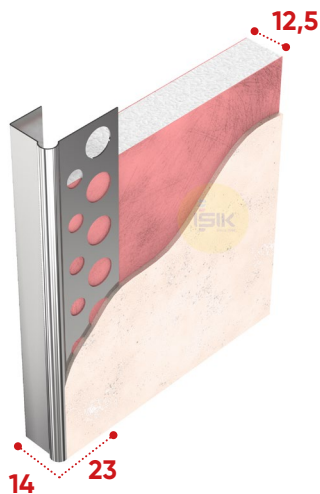
*Please refer to "Materials" page in order to avoid any corrosion problem.



Article Number	Material Thickness	Standards	Lengths	Pack /Pallet
A42009300	0.40 mm	EN 14353	250, 260, 270, 275, 280, 300 cm	50pcs /200bun (A42009301: 100pcs / 100cts) (A42009302: 200pcs / 50cts)
A42009200	0.35 mm	-	250, 260, 270, 275, 280, 300 cm	50pcs /200bun (A42009201: 100pcs / 100cts) (A42009202: 200pcs / 50cts)

G4200 Galvanised Steel

G42005500	0.50 mm Z275	EN 14353	250, 260, 270, 275, 280, 300 cm	50pcs /200bun (G42005501: 100pcs / 100cts) (G42005502: 200pcs / 50cts)
G42001300	0.40 mm Z100	EN 14353	250, 260, 270, 275, 280, 300 cm	50pcs /200bun (G42001301: 100pcs / 100cts) (G42001302: 200pcs / 50cts)
G42000200	0.35 mm Z60	-	250, 260, 270, 275, 280, 300 cm	50pcs /200bun (G42000201: 100pcs / 100cts) (G42000202: 200pcs / 50cts)



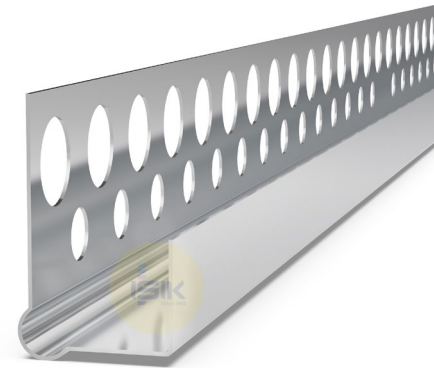
A4210

Aluminium Natural
Edging Bead J
smooth surface

14x23 mm wings | 12,5 mm plasterboard
Dry lining | 1 mm gypsum depth

Provides reinforcement for plasterboard edges by enclosing them in a protective section.

*Please refer to "Materials" page in order to avoid any corrosion problem.



Article Number	Material Thickness	Standards	Lengths	Pack /Pallet
A42109300	0.40 mm	EN 14353	250, 260, 270, 275, 280, 300 cm	24pcs /100bun (A42109301: 48pcs /50cts) (A42109302: 100pcs / 25cts)
A42109200	0.35 mm	-	250, 260, 270, 275, 280, 300 cm	24pcs /100bun (A42109201: 48pcs /50cts) (A42109202: 100pcs / 25cts)

G4210 Galvanised Steel

G42105500	0.50 mm Z275	EN 14353	250, 260, 270, 275, 280, 300 cm	24pcs /100bun (G42105501: 48pcs /50cts)
G42101300	0.40 mm Z100	EN 14353	250, 260, 270, 275, 280, 300 cm	24pcs /100bun (G42101301: 48pcs /50cts)
G42100200	0.35 mm Z60	-	250, 260, 270, 275, 280, 300 cm	24pcs /100bun (G42100201: 48pcs /50cts)

EXTERNAL THERMAL INSULATION SYSTEMS

Corner Beads with Mesh

PE145

PC145

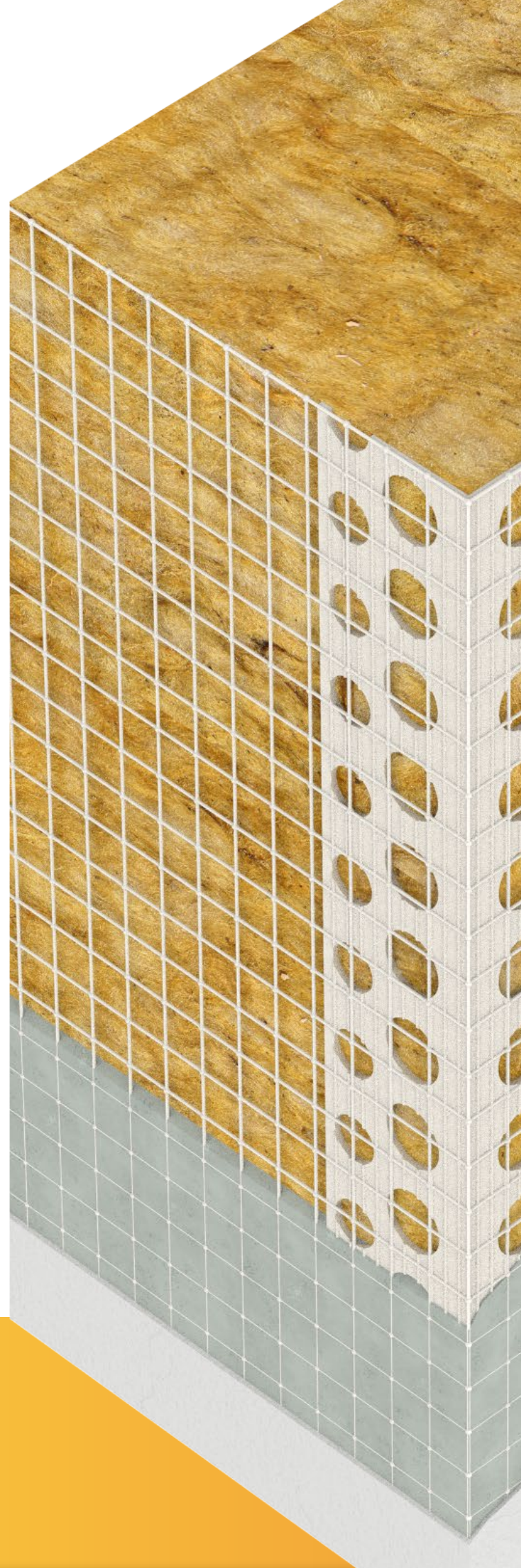
PC110

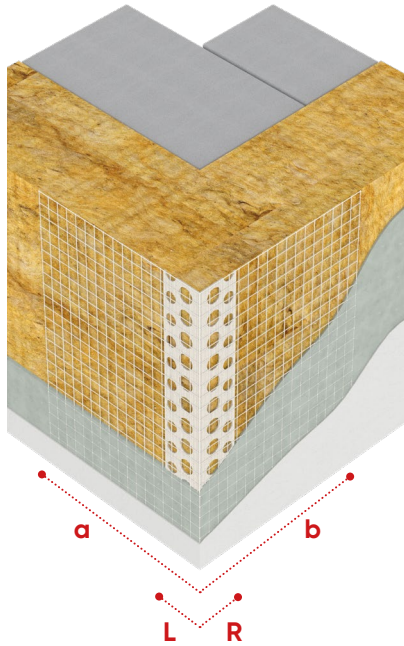
PA145

PC075

AC110

A: Aluminium | P: PVCu



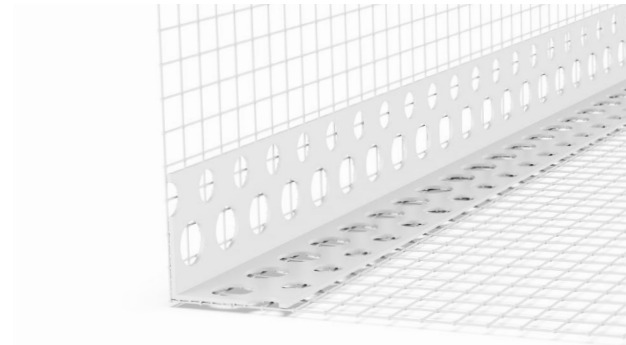


PE145

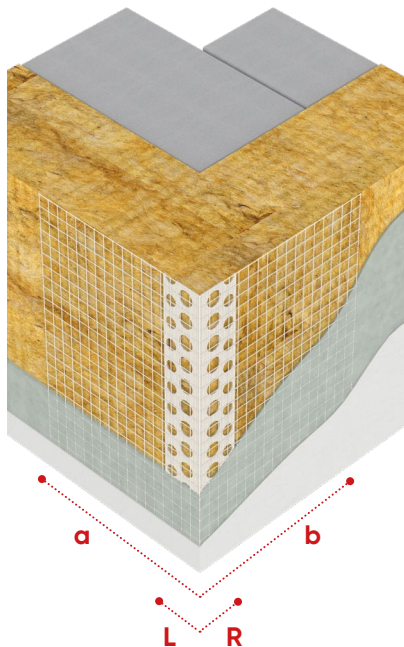
PVCu
Corner Bead
with mesh

ETAG 004 certificated | 145 g/m² glass fibre mesh
ETICS-EIFS-EWI

Protects and reinforces the corners of the insulation boards.
The profile to create exact edges in thermal insulation systems.
The mesh to ensure that there are no cracks in the render.



Article Number	Corner Bead Wing(LxR)	Profile weight	Mesh Colour	Mesh Width(axb)	Lengths	Pack /Pallet
PE14543W8	23,5x23,5 mm	55±2 g/m	White	10x15 cm	200, 250, 300 cm	50pcs / 50cts
PE14544W8	23,5x23,5 mm	55±2 g/m	White	10x10 cm	200, 250, 300 cm	50pcs / 42cts
PE14545W8	23,5x23,5 mm	55±2 g/m	White	8x12 cm	200, 250, 300 cm	50pcs / 42cts
PE14553W8	22x22 mm	55±2 g/m	White	10x15 cm	200, 250, 300 cm	50pcs / 50cts
PE14554W8	22x22 mm	55±2 g/m	White	10x10 cm	200, 250, 300 cm	50pcs / 42cts
PE14555W8	22x22 mm	55±2 g/m	White	8x12 cm	200, 250, 300 cm	50pcs / 42cts
PE14563W8	21x21 mm	45±2 g/m	White	10x15 cm	200, 250, 300 cm	50pcs / 50cts
PE14564W8	21x21 mm	45±2 g/m	White	10x10 cm	200, 250, 300 cm	50pcs / 42cts
PE14565W8	21x21 mm	45±2 g/m	White	8x12 cm	200, 250, 300 cm	50pcs / 42cts

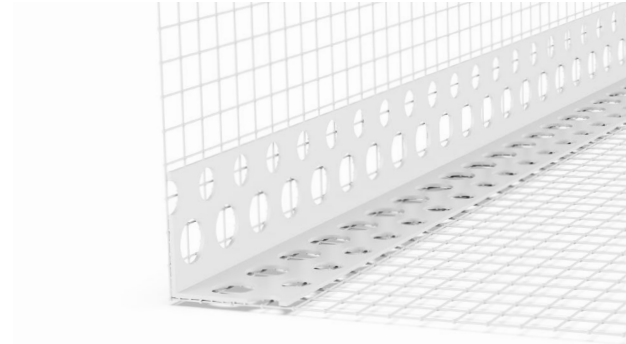


PC145

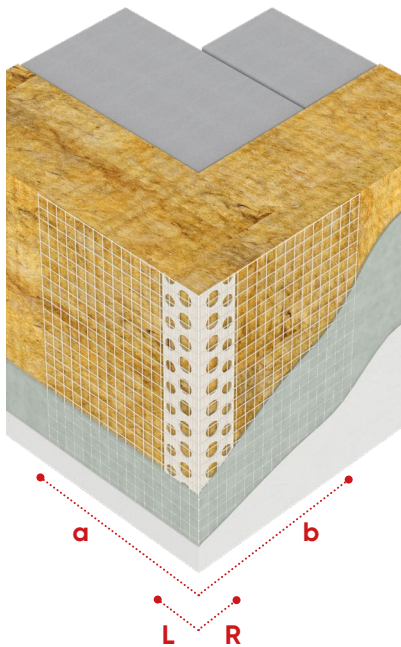
PVCu
Corner Bead
with mesh

145 g/m² glass fibre mesh
ETICS-EIFS-EWI

Protects and reinforces the corners of the insulation boards.
The profile to create exact edges in thermal insulation systems.
The mesh to ensure that there are no cracks in the render.



Article Number	Corner Bead Wing(LxR)	Profile weight	Mesh Colour	Mesh Width(axb)	Lengths	Pack /Pallet
PC14543W8	23,5x23,5 mm	55±2 g/m	White	10x15 cm	200, 250, 300 cm	50pcs / 50cts
PC14544W8	23,5x23,5 mm	55±2 g/m	White	10x10 cm	200, 250, 300 cm	50pcs / 42cts
PC14545W8	23,5x23,5 mm	55±2 g/m	White	8x12 cm	200, 250, 300 cm	50pcs / 42cts
PC14553W8	22x22 mm	55±2 g/m	White	10x15 cm	200, 250, 300 cm	50pcs / 50cts
PC14554W8	22x22 mm	55±2 g/m	White	10x10 cm	200, 250, 300 cm	50pcs / 42cts
PC14555W8	22x22 mm	55±2 g/m	White	8x12 cm	200, 250, 300 cm	50pcs / 42cts
PC14563W8	21x21 mm	45±2 g/m	White	10x15 cm	200, 250, 300 cm	50pcs / 50cts
PC14564W8	21x21 mm	45±2 g/m	White	10x10 cm	200, 250, 300 cm	50pcs / 42cts
PC14565W8	21x21 mm	45±2 g/m	White	8x12 cm	200, 250, 300 cm	50pcs / 42cts

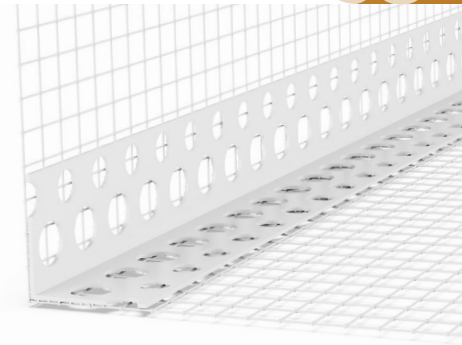


PC110

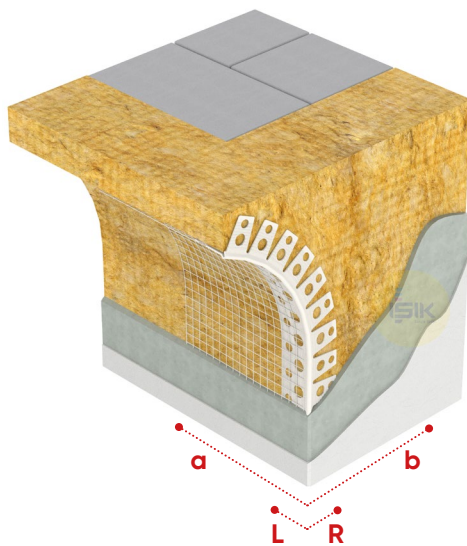
PVCu
Corner Bead
with mesh

110 g/m² glass fibre mesh
ETICS-EIFS-EWI

Protects and reinforces the corners of the insulation boards.
The profile to create exact edges in thermal insulation systems.
The mesh to ensure that there are no cracks in the render.



Article Number	Corner Bead Wing(LxR)	Profile weight	Mesh Colour	Mesh Width(axb)	Lengths	Pack /Pallet
PC11044W8	23,5x23,5 mm	55±2 g/m	White	10x10 cm	200, 250, 300 cm	50pcs / 64cts (PC11044W1: 50pcs/ 110fbg)
PC11045W8	23,5x23,5 mm	55±2 g/m	White	8x12 cm	200, 250, 300 cm	50pcs / 64cts (PC11045W1: 50pcs/ 110fbg)
PC11054W8	22x22 mm	55±2 g/m	White	10x10 cm	200, 250, 300 cm	50pcs / 64cts (PC11054W1: 50pcs/ 110fbg)
PC11055W8	22x22 mm	55±2 g/m	White	8x12 cm	200, 250, 300 cm	50pcs / 64cts (PC11055W1: 50pcs/ 110fbg)
PC11064W8	21x21 mm	45±2 g/m	White	10x10 cm	200, 250, 300 cm	50pcs / 64cts (PC11064W1: 50pcs/ 110fbg)
PC11065W8	21x21 mm	45±2 g/m	White	8x12 cm	200, 250, 300 cm	50pcs / 64cts (PC11065W1: 50pcs/ 110fbg)
PC11084W8	19x19 mm	39±2 g/m	White	10x10 cm	200, 250, 300 cm	50pcs / 64cts (PC11084W1: 50pcs/ 110fbg)
PC11085W8	19x19 mm	39±2 g/m	White	8x12 cm	200, 250, 300 cm	50pcs / 64cts (PC11085W1: 50pcs/ 110fbg)

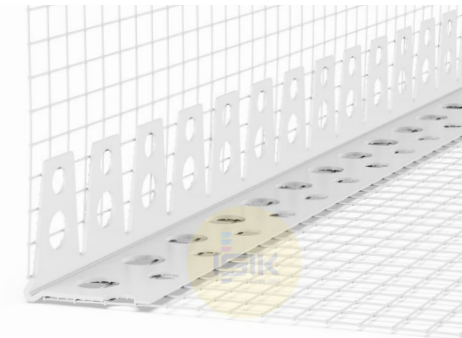


PA145

PVCu
Arch Bead
with mesh

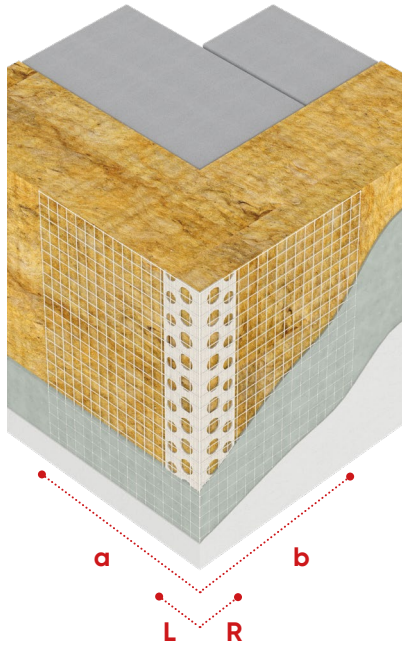
ETAG 004 certificated | 145 g/m² glass fibre mesh
ETICS-EIFS-EWI

Protects and reinforces the arch corners of the insulation boards.



Article Number	Corner Bead Wing(LxR)	Profile weight	Mesh Colour	Mesh Width(axb)	Lengths	Pack /Pallet
PA14533W8	25x25 mm	50±2 g/m	White	10x15 cm	200, 250, 300 cm	50pcs / 50cts
PA14534W8	25x25 mm	50±2 g/m	White	10x10 cm	200, 250, 300 cm	50pcs / 64cts



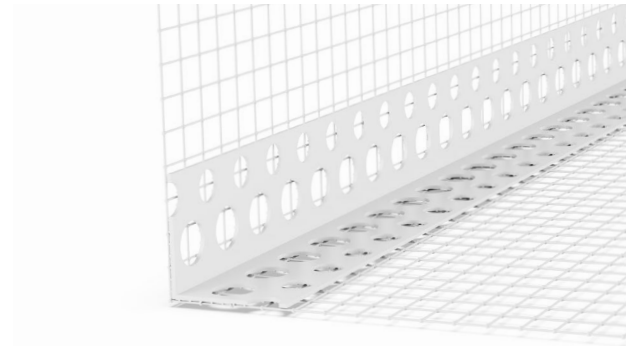


PC075

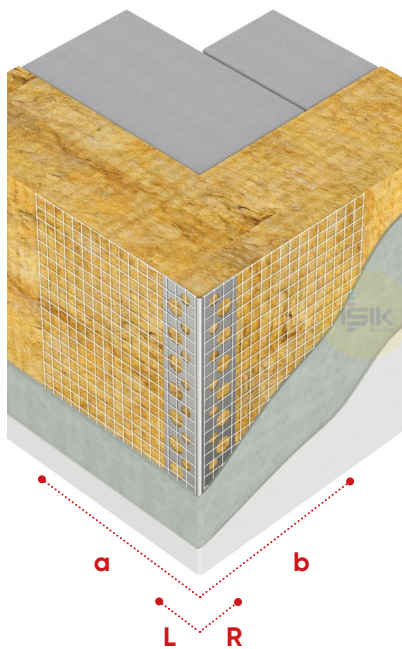
PVCu
Corner Bead
with mesh

75 g/m² glass fibre mesh
ETICS-EIFS-EWI

Protects and reinforces the corners of the insulation boards.
The profile to create exact edges in thermal insulation systems.
The mesh to ensure that there are no cracks in the render.



Article Number	Corner Bead Wing(LxR)	Profile weight	Mesh Colour	Mesh Width(axb)	Lengths	Pack /Pallet
PC07586W2	19x19 mm	39±2 g/m	White	8x8 cm	200, 250, 300 cm	50pcs / 110fbg

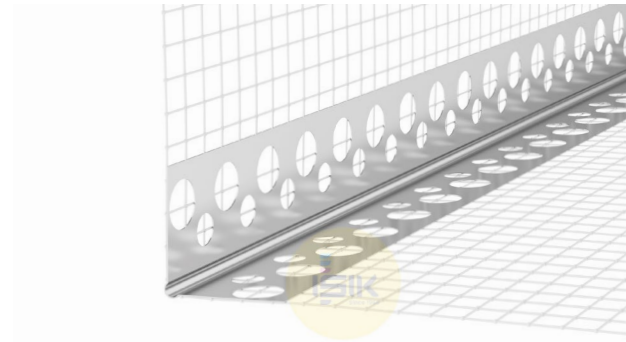


AC110

Aluminium Natural
Corner Bead
with mesh

110 g/m² glass fibre mesh
ETICS-EIFS-EWI

Protects and reinforces the corners of the insulation boards.
The profile to create exact edges in thermal insulation systems.
The mesh to ensure that there are no cracks in the render.



Article Number	Corner Bead Wing	Mesh Colour	Mesh Width(axb)	Lengths	Pack /Pallet
AC11043N8	23x23x0,30 mm	White	10x15 cm	250 cm	50pcs / 50cts
AC11044N8	23x23x0,30 mm	White	10x10 cm	250 cm	50pcs / 64cts
AC11045N8	23x23x0,30 mm	White	8x12 cm	250 cm	50pcs / 64cts
AC11084N8	19x19x0,28 mm	White	10x10 cm	250 cm	50pcs / 64cts
AC11085N8	19x19x0,28 mm	White	8x12 cm	250 cm	50pcs / 64cts
AC11086N8	19x19x0,28 mm	White	8x8 cm	250 cm	50pcs / 64cts

- İŞİK guarantees, within general business terms, the proper material quality and the careful manufacture of the profiles.
- No responsibility or liability is accepted for errors or information that is found to be misleading. Suggestions, descriptions and application advises are only for information and İŞİK accepts no liability in respect thereof.
- Because the composition and the chemical and physical properties of the plasters applied are out of our control, no guarantee can be accepted for the resistance of the profiles against corrosion. The compatibility of the plaster with the profiles must be ensured.
- Varying factors in the application of plaster make it necessary to adapt to the individual working conditions from case to case. This is the responsibility of the buyer. The term of guarantee for plaster profiles is six months, in compliance with the legal regulations on sales contracts, and begins on the date of delivery.
- Practical tests are the safest way to avoid possible mistakes, for which no guarantee can be given. Corrosion can only occur if the plasters are under permanent influence of humidity or if they dry too slowly. Make sure the plaster dries quickly by airing well.
- Storage and application instructions must always be observed and followed.
- Metal corrosion is caused by chlorides, carbon dioxide or a combination of moisture and oxygen. This can lead to the following different types of corrosion:

Type of Corrosion	Apperance	Cause
General corrosion	Brown	Steel with no protective coating exposed to the air
Pitting corrosion	Brown/white	Effect of corrosion stimulators (e.g.chlorides) on metals, including stainless steel.
Contact corrosion	Brown/white	Contact between two different metals causing the less noble one to corrode.
White rust	White	Corrosion of aluminium.
Rust film	Orange/ brown	Incipient surface corrosion in a thin layer. Often caused by moisture during storage or use.
Crevice corrosion	Brown	Caused by crevices in the metal surface.
Interlayer corrosion	Detachment of surface layer	Corrosion in the contact and surface layer,adhesion zone between metal surface and surface layer. Caused by corrosive behaviour of surface layer.



IŞIK PERDE RAYLARI SAN. ve TİC. AŞ.

Gebze Plastikçiler Organize Sanayi Bölgesi

Atatürk Bulvarı 11. Cad. No:9

41400 **Gebze, Kocaeli | TURKEY**

T: +90 262 502 1660

www.isikgroup.com

isikgroup@isikgroup.com