

V I L L A S & S U I T E S

CONRAD®

BORA BORA NUI

NEVER JUST STAY. STAY INSPIRED.

W E L C O M E T O C O N R A D B O R A B O R A N U I



Nestled in a cove of turquoise waters, white sand and black lava rock, Conrad Bora Bora Nui offers an idyllic escape from the bustle of everyday life. Combining Polynesian tradition with state-of-the-art amenities, the resort allows guests to unwind and rejuvenate in style.

Located in a private cove on Motu To'opua, Conrad Bora Bora Nui is an idyllic resort secluded from the rest of the island. Lush tropical gardens, the longest stretch of white sand beach in Bora Bora, panoramic water views, and breathtaking sunsets await just a short 20-minute boat ride away from the airport and a 45-minute flight from Tahiti.

At a glance:

- Fully renovated resort with unrestricted lagoon and sunset views
- Located on a private island
- 114 Villas and Suites, including two, multi-level
- Presidential Overwater Villas with plunge pools
- Four distinct dining destinations, two bars and 24 hour in-villa dining
- Infinity pool with swim up bar
- Tamariki Kids Club
- Complimentary water activities
- Meetings, Events and Wedding facilities

Our modern and well-appointed villas and suites have been thoughtfully designed around Bora Bora's key feature – the lagoon and Motu Tapu. All of our villas and suites are inspired by traditional Polynesian décor and have been designed to deliver comfort, space and breathtaking views.

All our Villas and Suites include the following:

- Private terrace complete with outdoor table and sun lounge
- Spacious bathrooms with double marble vanities and soaking tubs
- Separate seating area in all Villa's
- Complimentary WiFi
- Bluetooth Surround Sound
- Flat screen TV with HDMI input
- Nespresso coffee machines and tea making facilities
- Refrigerated mini bar (complimentary first set up)
- International plug (220V)
- Luxury amenities
- Electronic safe
- Solar panel



LAGOON VIEW SUITE

Size: 101 sq. m / 1,087 sq. ft

Sleeps: 3 adults or 2 adults and 2 children
(under the age of 13)

King: 7

Twin: 2

Relax on the king bed of this spacious suite and soak in the stunning views of the lagoon from the large private terrace. This suite is ideal for families with a separate seating area, spacious bathroom and the option of a connecting room.



GARDEN VILLA

Size: 101 sq. m / 1,087 sq. ft

Sleeps: 3 adults or 2 adults and 2 children
(under the age of 13)

King: 4

Nestled in our lush coconut garden, the villa offers a lagoon view from the private terrace. Beautifully appointed with a king bed and exotic Polynesian-inspired decor. For your comfort, this suite offers a generous separate lounge area and bathroom.



GARDEN POOL VILLAS

Size: 101 sq. m / 1,087 sq. ft

Sleeps: 3 adults or 2 adults and 2 children
(under the age of 13)

King: 6

Nestled in our lush coconut garden, the villa offers a lagoon view from the terrace with private pool. Beautifully appointed with a king bed and exotic Polynesian-inspired decor. For your comfort, this suite offers a generous separate lounge area and bathroom.



HORIZON VIEW POOL VILLAS

Size: 101 sq. m / 1,087 sq. ft

Sleeps: 3 adults or 2 adults and 2 children
(under the age of 13)

King: 5

Soak in the stunning panoramic views from the private terrace of this stylish villa, with its private pool. Located on the hillside overlooking the lagoon, you can relax on the king canopy bed or in the separate lounge area. Experience Bora Bora's unmatched sunsets from this villa, ideal for families.



BEACH POOL VILLA

Size: 124 sq.m / 1,335 sq. ft

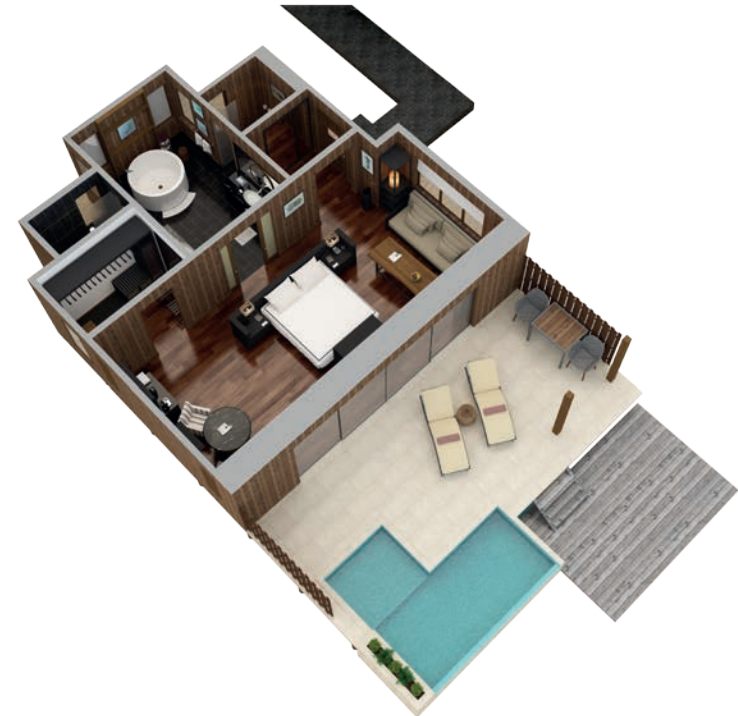
Sleeps: 3 adults or 2 adults and 2 children
(under the age of 13)

King: 2

The beauty of this villa is the exclusive access to the beach, directly from your terrace you step onto the white soft sand and straight into the lagoon.

After a swim, retreat back to your terrace and into the private infinity pool or relax and soak in the beautiful views from your sun bed.

This well-appointed villa is complete with a king size bed, spacious bathroom with separate bath tub, dressing room and seating area.





OVERWATER VILLA

Size: 116 sq.m / 1,249 sq.ft

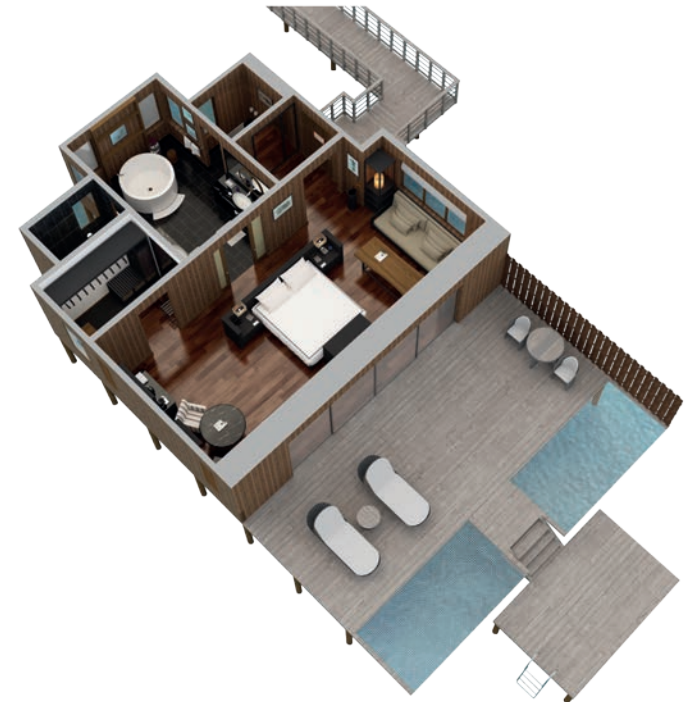
Sleeps: 3 adults or 2 adults and 2 children
(under the age of 13)

King: 16

Offering complete luxury, the Overwater Villa is well-appointed to deliver a comfortable and relaxing getaway in paradise!

Bringing the indoors out with the fully retractable windows, make your way outside to the private and spacious terrace where you have direct access to the lagoon. Before retreating inside to the comfortable king bed, ensure to soak in the views of the horizon and spectacular sunset floating on the overwater hammocks.

For your convenience the villa also provides a separate seating area.





DELUXE OVERWATER VILLA

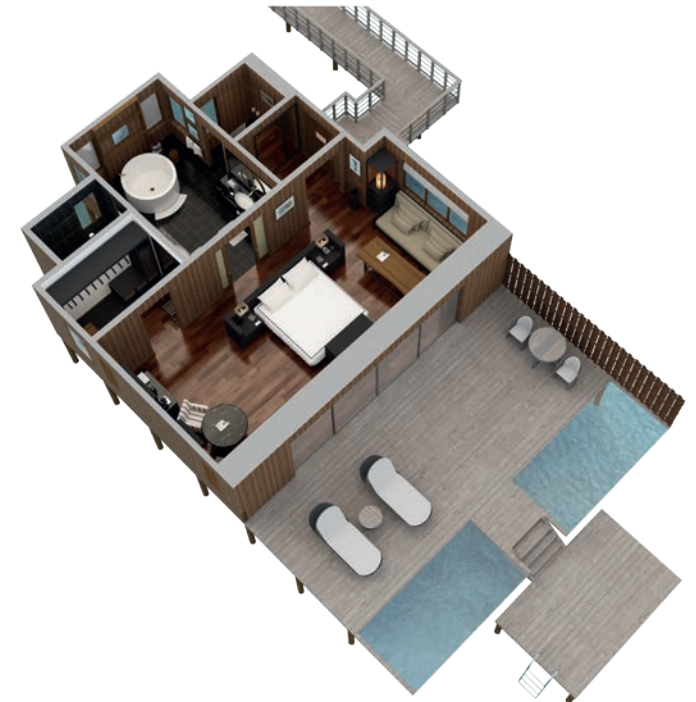
Size: 116 sq.m / 1,249 sq.ft

Sleeps: 3 adults or 2 adults and 2 children

(under the age of 13)

King: 34

Immerse yourself in the uninterrupted views of the famous turquoise lagoon from your terrace, floating overwater hammock or inside the spacious villa with fully retractable windows - bringing the indoors out. These well-appointed villa's are complete with a king bed, spacious bathroom with a separate bath tub, dressing room and seating area.





OVERWATER POOL VILLA

Size: 121 sq. m/1,302 sq. ft

Sleeps: 3 adults or 2 adults and 2 children

(under the age of 13)

King: 20

Offering complete luxury, this villa has all the requirements for a comfortable and relaxing getaway! Bringing the indoors out with the fully retractable windows, make your way to the spacious terrace where you will find the private infinity pool, floating overwater hammock and sun lounges. Having direct access to the lagoon, take a swim or snorkel from your terrace. Before you retreat inside to the comfortable king bed, ensure to soak in the views of the horizon and spectacular sunset floating on the catamaran nets. For your convenience the villa also provides a separate seating area.





OTEMANU VIEW OVERWATER POOL VILLAS

116 sq. m/1,249 sq. ft,
overwater with Mount Otemanu view,
fully retractable windows
King: 4

Offering complete luxury, the Overwater Otemanu view Overwater Villas is well-appointed to deliver a relaxing getaway in paradise, and dazzling views of the iconic Mount Otemanu.

Bringing the indoors out with the fully retractable windows, make your way outside to the private and spacious terrace where you have direct access to the lagoon. Before retreating inside to the comfortable king bed, ensure to soak in the views of the horizon and spectacular sunset floating on the overwater hammocks.





SUNSET VIEW OVERWATER POOL VILLAS

116 sq. m/1,249 sq. ft.,
overwater villa with uninterrupted lagoon
and sunset views, fully retractable windows
King: 8

Sunsets are yours for the taking in these overwater villas, located in a secluded area off a double jetty. Offering ultimate privacy, you're invited to enjoy the cool simplicity of indoor-outdoor living, from outdoor showers and a loft-level lounge to midnight dips in your private infinity pool. Each luxurious villa features a king bed, spacious bathroom with a separate bath tub, dressing room and seating area.





ROYAL OVERWATER POOL VILLA

Size: 151 sq. m/1,625 sq. ft

Sleeps: 4 adults

King: 2

From the moment you walk in, you will be encapsulated by the incredible views this spacious and unique villa offers.

Positioned to deliver the ultimate view of the turquoise lagoon, you can savor this experience from the comfort of your king bed or on your spacious and private terrace which is complete with an infinity pool, sunbeds and floating overwater hammock.

Inside, the villa is designed to provide comfort and space with a separate dining and lounge room, dressing rooms, a well-appointed bathroom, king bed, fully retractable windows and for the ultimate in luxury - a personal butler at your service!





PRESIDENTIAL OVERWATER VILLA

Size: 300 sq. m/3,229 sq. ft

Sleeps: 6 adults

King: 2

For the ultimate experience of luxury, our expansive two-story Presidential Villa features the following:

- two bedrooms
- three generous bathrooms
- sauna
- two dressing rooms
- spacious living room

Outside, the villa provides three separate terraces, an infinity pool overlooking the horizon, whirlpool, sunbeds, dining table, bar and lounge area - perfect to host a private dinner or special celebration and comes complete with your own personal butler!

Delivering the ultimate in luxury, convenience and privacy, complimented with a uninterrupted views of the horizon, The Presidential Villa is unparalleled in Bora Bora.







BP 502, 98 730 Vaitape, Bora Bora | Tel: +689 40 60 33 00 | Fax: +689 40 60 33 01

www.conradboraboranuiresort.com