



Gold Wings fly in P2



Ameku views soon P3

Say yes to LPH survey, says Dave

Ex-Ruapehu Alpine Lifts chief executive Dave Mazey is urging Life Pass Holders to say yes to the MBIE survey on whether they would support paying a transfer fee so that their passes remain valid, under a new company that would take on the ski areas.

“There is no downside to you responding and a potential massive upside,” he told Life Pass Holders in a Facebook post.

Mr Mazey was RAL CEO for many years, before the period when some people are saying the company became ‘over-commercialised’.

A big ask, yes

“Yes, for a lot of Life Pass holders the \$2500 is a big ask but I reiterate at this time we are being asked to “indicate a likely level of support” not to make a commitment,” he told pass holders.

“This is an early step in a process to achieve the future operation of these two ski areas under a NEWCO. If this step is a successful one it will provide time to put together the full proposition of NEWCO.”

He says once the Ministry of Business, Innovation and Employment (MBIE) have enough LPH support, the administrators can then seek other contributors to help form a NEWCO.

Contribution by others will also be an element of NEWCO being realised, says Mazey, including identifying if there are



Dave Mazey, past RAL CEO.

additional sources of cash for the new entity, such as other crowdfunding from non-LPHs.

“It would be reasonable to assume that before any commitment is required, or payment made, further information will be available around what NEWCO will look and feel like. I am sure all of our many questions will get answered.”

Turn to Page 2



Te Kura Kaupapa Māori o Ngāti Rangī performers were among the many schools that took part in the revived Ruapehu Culture Festival on Thursday. See more Page 7. Photo: Liz Brooker, Toi Communication.

YOUR TEAM OF PROPERTY EXPERTS

						
Aaron Owen Residential and Lifestyle Sales	Jenny Dekker Residential and Lifestyle Sales	Olivia Stewart Residential and Lifestyle Sales	Kay Blaney Residential and Lifestyle Sales	Pete Stratton Rangitikei Ruapehu Country Sales	Jordan Davis Commercial & Industrial Sales & Leases	Michaela Palacio Office Manager & Commercial Sales Associate

With a proven track record, Bayleys Ruapehu are committed to achieving outstanding outcomes across residential, lifestyle, rural and commercial real estate. The sales consultants who cover Ruapehu, Taumarunui and Northern Rangitikei, have the experience to deliver our clients the best possible results - whatever the challenge.

Engage with the professional Bayleys Ruapehu team of well-connected, dedicated property experts today.

Bayleys Ruapehu 06 385 0170 | 16 Goldfinch Street, Ohakune
BARTLEY REAL ESTATE LTD. LICENSED UNDER THE REA ACT 2008

Honda Goldwings fly into Ruapehu

All but two models of Honda Goldwing motorcycles were among the 30-plus entries to the New Zealand club's AGM meet in Ohakune on the weekend.

The Club chose to meet in Ohakune for the first time as it is a central spot for the far-flung members, including some from the South Island.

The meet up followed an 'F-Troop' ride over the previous week, with riders travelled from Masterton to Palmerston North, to Havelock North and the Hawkes Bay, then on to Taupo, with side rides along the way. They left Taupo on Friday for Ohakune, some taking the long way round through to Te Kuiti and down.

Around 40 members turned out for the AGM at the Ohakune Club, before heading off on a loop ride taking in Fields Track, the Parapara, Raetihi and back to Ohakune.

The oldest bike was a 1975 GL 1000, up to several 2022 models. The missing models were an 1100 and 1200 model.

Part of the trip including the 'sheriff' – Brian Hobson who also organised the F-Troop ride – fining riders for various 'crimes'. One rider was fined for losing his wallet, then his hearing aid, then telling Brian that he hoped the



More than 30 Honda Goldwings – 'lazyboys on wheels' – flew into Ohakune on the weekend.

sheriff didn't find out and fine him, not realising he was dobbing himself in.

The funds raised from the fines were donated

to a member who is battling with cancer.

The Club has been going since 1986, with a few foundation members on the rally.

One of them – Ian Goodwin – has two Goldwings including one that he has ridden for a million miles.

What's on around Ruapehu

Junction Market **3 December**
Raetihi Christmas Parade **10 December**

Ski, Board & Bike
Cnr Ayr St & Goldfinch St, Ohakune
06-385-8433, tcbskiandboard.co.nz

TCB

Please email: ads@rupahebuletin.co.nz or call 06 385 8532 or if you have something to add to this column.

Eating out in the Ruapehu District

CYPRUS TREE

79 Clyde St, Ohakune Ph: 06 385 8857
Check out our new summer menu. Kiwi craft beers, boutique wines and cocktails to quench that summer thirst. Playroom for the kids, foosball, air hockey and spaces to keep the kids entertained. Spectacular mountain views. A great place for casual get togethers or special occasions. Contactless takeaways available. Open 7 days, 5pm till late.

KINGS BAR & RESTAURANT

3 Rimu St Ohakune Junction Ph: 06 385 8648
Est in 1913, historic Kings offers an inviting menu by locally renowned chefs, a great selection of boutique wines and is the exclusive venue to offer Ruapehu Brewing Company beers on tap. See our Facebook page for what's on. Wednesday – Friday from 4pm and Saturday and Sunday from 2pm.

POWDERKEG

Bottom of the mountain road Ph: 06 385 8888
The iconic Powderkeg – with a great craft beer and wine selection. With over 30 years' commitment to service and good quality free range food. Follow us on Instagram @powderkegbar for our weekly deals, parties and giveaways. Great breakfast and delicious brunch cocktails in the Matterhorn, Monday to Friday 7am – 10am and 7am – 10.30am Saturday & Sunday. The Powderkeg is open everyday, from 4pm – late on weekdays and 3pm – late on weekends.

UTOPIA CAFÉ

47 Clyde St, Ohakune Ph: 06 385 9120
Open 7 days from 7:30am – 3:30pm for all day breakfast and lunch. A cosy memorable atmosphere with a great range of cabinet food and beverages, including regional famous Volcanic coffee, Frappé and smoothies. Vegan/Gluten-free options for both savoury and sweet are available. Speedy free Wi-Fi! A perfect place for everybody!

2 • RUAPEHU BULLETIN 23 November 2022

MBIE calls for LPH support

From Page 3

deferred maintenance that is required for the business to continue to operate.

"We need to establish the likely level of financial support from Life Pass Holders to meet this cash requirement."

If enough LPHs indicate they are willing to pay the transfer fee, Kānoa – RDU considers that

this "will be a realistic starting point for the potential commercial transaction to be advanced".

They would then work to determine if there are individuals willing to act as directors for the new entity; engage with other stakeholders, including iwi; identify if there are any additional sources of cash for the new entity; and progress discussions to facilitate the transfer of

the Department of Conservation licences of the ski fields to the new entity.

Pigou says if Life Pass Holders are unwilling to support future skiing at Mt Ruapehu, "this commercial transaction will not be feasible" and that "there may be no other options to maintain operations at Mt Ruapehu and it is likely that RAL will be liquidated".








Often Sought, Seldom Available

📍 355 Motete Road, Raetihi

Put your stake on this sizeable farm with excellent balanced contour, on the market for the first time in 3 generations, and only 16 km from Raetihi. Farms like this rarely become available on the Waimarino plateau. A total of 316 ha (STS) with approx. 230 ha of undulating cultivable land that was a successful market gardening operation, historically growing potatoes, carrots and brassica alongside a livestock breeding/finishing regime. Reliable quality water supply to all paddocks. There are 2 homes, 4-stand woolshed, sheep yards, cattle yards and numerous sheds.

316.64 hectares

Tender
11am, Thu 1 December 2022
NZR, 1 Goldfinch Street, Ohakune
Web nzc.nz/RX3443275
Jamie Proude 027 448 5162

NZR Central Ltd Licensed REAA 2008.

Say yes, says Dave

From Page 1

He said recently similar surveys have been undertaken by others, "which are excellent and add real value".

"But the critical players right now are MBIE, ANZ and the Administrator. We need to respond direct to their queries."

"A NEWCO funded by a mix of individual users, clubs and similar organisations, plus various investors, is eminently possible and achievable. If done right NEWCO will be a strong vehicle to take these two ski areas and the associated communities into a new future.

"This is not about what happened last month or last year, this is about what may be possible for the future."

He says the alternative for LPHs is that the ski areas are liquidated and

"For Life Pass Holders, a positive response to the two questions in the Life Pass Holder Support Form attached to the MBIE letter maximises our chance to get to the next stage. This has to be done by end of business day on Thursday 24 November.

"Plus, for Life pass Holders and all others, a response to the PWC survey will strengthen the possibility of a NEWCO outcome."

MBIE calls for life pass support for ski areas

Mt Ruapehu Life Pass holders have been asked if they would be willing to provide financial support for a proposed new entity to operate the Whakapapa and Tūroa ski areas.

The Ministry of Business, Innovation & Employment's Regional Economic Development and Investment Unit (Kānoa-RDU) last week asked the Voluntary Administrators of Ruapehu Alpine Lifts (RAL) to formally survey the approximately 14,500 Life Pass Holders.

LPHs are asked if they would chip in \$2500 as a transfer fee, plus \$250 per year for three years to fund ongoing capital maintenance and development.

The survey is non-binding but is designed to gauge potential support, if a proposed new entity went ahead.

The new entity would operate the Turoa and Whakapapa ski fields, including the Sky Waka gondola.

Other potential supporters, who are not Life Pass Holders, can also take part in a separate survey form to capture the extent of this interest. It is also available on the PwC website (see below).

Head of Kānoa-RDU Robert Pigou says the Government has asked Kānoa-RDU to explore alternative arrangements, which could see ski-field operations and other economic activities continue to be undertaken on Mt Ruapehu.

"If Life Pass Holders support this then the Crown is prepared to consider some concessions to ensure an alternative commercial arrangement has a chance of succeeding," he says.

RAL Administrators need to provide the results of the Life Pass Holders survey to Kānoa-RDU by Thursday 24 November.

"We are at a point now where we need to understand the likely extent of Life Pass Holder financial support before we can continue investigating the potential commercial transaction and the other elements required to finalise it," says Robert Pigou, one of the administrators.

"We encourage all Life Pass holders to complete the survey before the due date of 24 November 2022," says voluntary administrator John Fisk.

"A level of funding support from the Life Pass Holder group is critical to the success of any commercial transaction for a new entity that takes over the operations of RAL."

The form and letter is available on the PwC New Zealand website at: <https://www.pwc.co.nz/services/business-restructuring/voluntary-administration/ruapehu-alpine-lifts-limited.html>

Impossible RAL

"As we are all aware, the current financial position of Ruapehu Alpine Lifts Limited is impossible. The Company owes creditors in excess of \$45 million," states Pigou in the letter to LPHs.

"The Government is acutely conscious of the

immediate impact the collapse of RAL would have on the communities surrounding Mt Ruapehu, and also understands that an RAL collapse will also adversely impact other Ruapehu stakeholders (particularly RAL's employees, co-dependant businesses, the 14,500 Life Pass Holders and the 52 tramping and skiing clubs), the wider region including Taupo, Ohakune, Taumarunui and Turangi, and that many New Zealanders will no longer be able to ski if RAL ceases operations.

"It is for these reasons that the Government is prepared to provide additional support to RAL.

The Government and the ANZ bank have agreed to provide the Company and the Administrators with \$4.5 million of rescue finance to enable the Company's liabilities to be paid while exploring a possible solution other than liquidation.

He says that if an alternative structure isn't found, "the sale of some, or all, of RAL's assets and liquidation of the company appears highly probable".

He said the Government Cabinet has "moved quickly to investigate whether a skiing business and operation of the Sky Waka gondola can be sustained on Mt Ruapehu, under a new structure".

\$28m debt write off

Kānoa-RDU has identified a potential commercial transaction to achieve this objective. Two key elements of the potential commercial transaction are:

- ANZ and Kānoa-RDU would "effectively writing off their combined \$28 million of historical debt"
- The new entity would agree to honour the life passes of those Life Pass Holders that pay a transfer fee and agree to pay future levies to fund ongoing maintenance and capital expenditure.

Pigou says that the current estimate of the cash required to restart the business is between \$15 million to \$20 million.

"This level of funding is to ensure the new entity has sufficient funds to continue to operate in the longer term, and to meet outstanding rescue finance/costs and

Turn to Page 2

Ameku views by Christmas



Stunning views across the Waimarino await hikers on the Ameku Track. Photo: Rabbit Nottage.

A stunning view across the Waimarino hills to Mt Ruapehu and Mt Ngauruhoe awaits hikers on the Ameku Trail in Raetihi, once the trail opens next month.

Contractor Rabbit Nottage is working on getting another section of the long-awaited trail open in time for the Christmas holidays.

He and fellow-project volunteer Geoff Anderson have been working in recent years to get the track open and now have the support from mill owner Vaughan Kearns, who has allowed access across his land, using logging tracks from the end of the paper road that provides legal public access from the end of Ameku Road.

The track starts opposite the new public toilets before the mill.

Rabbit says he has been donated about \$1400 worth of boulders, which he plans to use to help define the start of the track.

The new owners of the

TASCI lodge in Ohakune, Toni and Angela Everson, have donated the boulders.

The next part of the project is to form around 50 metres of trail from the gate near the fertiliser store above the mill, to link up

with the logging track.

The forestry area was recently milled and has since been replanted in cyprus and redwood seedlings.

Rabbit estimates that the hike to the viewing point will be about an hour

return.

The track has now been surveyed, to define the line that the public is allowed to cross, says Rabbit.

He says they are applying for funds to build a picnic area at the lookout area.

100% APPLIANCES

PROMOTION RUNS FROM 1st-24th DECEMBER



FREE HAM

... with any Fisher & Paykel, Haier or Beko purchase over \$599

Interest free, AfterPay and Laybuy terms available
*Conditions apply, ask in store for details

CRACKING CHRISTMAS DEALS ON

- ★ Small Appliances
- ★ Bikes & Scooters
- ★ Toys
- ★ BBQ's
- ★ Lawnmowers
- ★ Guitars
- ★ Washing Machines
- ★ Refrigerators
- ★ TV's
- ★ Computers
- ★ IPads & Tablets

and we SERVICE ALL APPLIANCES

137 Hakiaha Street
Phone 07 895 7348
www.100percent.co.nz



neate architecture

New Houses Developments Alterations

Commercial Reclads Relocatables

P: 06 777 3550

E: admin@neate.co.nz

PO: Box 45 4660

Visit Us: <https://www.neate.co.nz/>



Local newspaper advertising is alive and well right here in Ruapehu

There is a lot of talk about the demise of newspapers, following the explosion of on-line media. But local community newspapers like the **Ruapehu Bulletin** reach as many people as they always did. With the cacophony of information through electronic media, our readers like to pick up their **Bulletin** and read about the people and places in their community.

You can by-pass the confusing and eye-watering number of websites (last count, well over half a billion) and talk directly with your customers by advertising each week in the **Ruapehu Bulletin**.

**Your stories,
your people,
your community,
your newspaper,
your place to
reach your
customers**



**Contact Jude today
for details of our
*Starter Pack on 06 385 8532
Email ads@ruapehubulletin.co.nz**



Taumarunui's back on the Main Trunk Line

Two new rail-based tourism packages will see the Northern Explorer regularly stop at Taumarunui and help bring more visitors into the Ruapehu region.

Great Journeys New Zealand is offering 10 short break packages and multi-day tours, which include travel on three scenic trains, accommodation and regional tourism experiences, as well as 12 fully guided multi-day tours.

Two of the packages, in the Ruapehu Region, will use Taumarunui station as their disembarking point.

"Great Journeys New Zealand's new offerings will showcase the regions and help our tourism industry recover from the impacts of Covid-19 border closures," says Tracey Goodall, KiwiRail's general manager scenic journeys.

"With the growing tourism interest around Taumarunui, we are excited to announce the Northern Explorer will now have a scheduled stop at Taumarunui Station.

"Our packages are about getting domestic and international travellers off the beaten track and out into the regions to really experience what New Zealand has to offer. As part of this we have been working closely with Visit Ruapehu and local providers to develop two packages centred around the Forgotten World."

The first package – Escape to the Forgotten World – includes a half-day rail cart tour and a visit to a lavender farm on the banks on the Whanganui River, travelling on the Northern Explorer from either Auckland or Wellington.



A steam train pulls into Taumarunui Station. Photo: NZ Herald.

The second – Forgotten World Adventure – is a multi-day stay in the regions, with a two-day rail cart tour along the entire Forgotten World railway from Okahukura to Stratford, an overnight stay in the unique Republic of Whangamomona, three nights in Taumarunui and time to visit the King Country.

"Beyond our own packages, Taumarunui is also a gateway to other key attractions. For example, the Timber Trail Great Ride attracts around 20,000 walkers and cyclists a year and the Whanganui River Journey Great Walk attracts around 4000 people a year. The Northern Explorer offers another way to get to these attractions and add to the travel experience."

Goodall thanked Visit Ruapehu and the Ruapehu District Council for their local expertise and ongoing support.

Ruapehu's mayor Weston Kirton says that Taumarunui has been looking forward to this day for a long time.

"Both tourism operators and residents alike are very excited about rail services resuming. The return of the iconic Northern Explorer to Taumarunui will be a huge boost to the township and our visitor industry, and we expect the service to be very well supported."

The packages can be booked from now.

Prior to the packages, Taumarunui was not a scheduled stop for the Northern Explorer but it would stop if 10 or more people wanted to get on or off the train. Taumarunui will become a scheduled Northern Explorer stop from 4 December.

Ruapehu mayor welcomes government ski rescue plan

Ruapehu's mayor Weston Kirton is welcoming the announcement by Government that they are prepared to provide additional support to Ruapehu's commercial skifields on the condition that Life Pass Holders do so also.

The Government proposal would see RAL assets transferred to a new entity with Life Pass Holders making a one-off \$2500 payment in order to be able to use their life pass to continue to be able to ski on Mt Ruapehu under the operation of the new entity.

Life Pass Holders are also being asked to pay a future levy of up to \$250 per year for two or three years to fund ongoing capital maintenance and development.

Mr Kirton said given the level of debt and money already committed by Government toward saving the skifields, this is a generous proposition from Government.

"Ski areas are incredibly complex and expensive things to operate with an estimated \$15-\$20 million needed to restart the snow sport business and Sky Waka gondola," he said.

"I would strongly urge Life Pass Holders to support the proposal as the most likely alternative was the sale of some, or all, of RAL's assets and liquidation of the company.

"The economic impact of RAL collapsing would be massive on Ruapehu communities and wider region not to mention the end of snow sports that have been enjoyed by generations of people.

"The government proposition offers an opportunity to ensure snow sports on Mt Ruapehu can still be enjoyed by generations to come," he said.

Community and Emergency Services

Alzheimers Whanganui Inc
Email admin@alzheimerswhanganui.org.nz or for support phone 06-345 8833

Budget Advice
Email waimarinobudgetservices@gmail.com or phone 06-385-3253 and leave a message.

CCS Disability Action (Whanganui)
Sheryl Brightwell 0800-789-654

Child, Adolescent and Sexual Health Nurse
06-385-5019

Child Youth and Family Service
0508-326 459

Churches
Anglican, 06-385-4957. Baptist, a/h 06-385-3100. Catholic, 06-385-8858 or 027 606 5186. Gospel Chapel, 06-385-8453. Presbyterian, 06-388-0675 or 06-385-8708. Waiouru – duty chaplain 06-387-5599 ext 7031 or 021-493-692

Civil Defence
Andrew Chambers 07 895 8188, 021 247 7340

CLAW community free legal advice
Whanganui 06-348-8288

Doctors: In an emergency call 111
Ruapehu Health Ltd 06-385-4211

Information Centres
Ohakune 06-385-8427, Raetihi 06-385-4805

Ngati Rangī Community Health Centre
06-385-9580

Plunket Society
Plunket Nurse 06-385-5019

Police and Search & Rescue Emergency, call 111
Ohakune 06-385-0100, Raetihi 06-385-4002, Waiouru 06-387-6884, Military Police 0800-50-11-22

Red Cross
0800 RED CROSS (0800 733 27677)

Rotary Club Raetihi - Ohakune
0210 434 161

Ruapehu REAP
0800 00 REAP (0800 007 327)

Ruapehu Maori Wardens
Email: ruapehumaoriwardens@gmail.com

St John
In an emergency call 111

Taumarunui Counselling Services
For confidential counselling in Waimarino phone 07-895-6393

Victim Support Contact Centre
0800 842 846

Waimarino Cancer Society
Co-ordinator 06 348 7402 or Kerri Dewson-Pratt 022 196 7355

Waimarino Health Care Centre
Raetihi 06-385-5019

Waimarino Community Toy Library
waimarinotoylibrary@hotmail.com

Women's Refuge
0800-REFUGUE 0800 73384

Ruapehu Mayor
Weston Kirton, enquiries to 06-385-8364 or 07-895-8188.

Owhango-National Park Community Board
Board members: Anthony Gurr 021-487-742; Eddie Marsters 021-108-0279; Simon O'Neill 021-661-159; Peter Zimmer 027 479 1926; Murray Wilson 027-542-9079. Janelle Hinch (RDC rep) 022-385-8683.

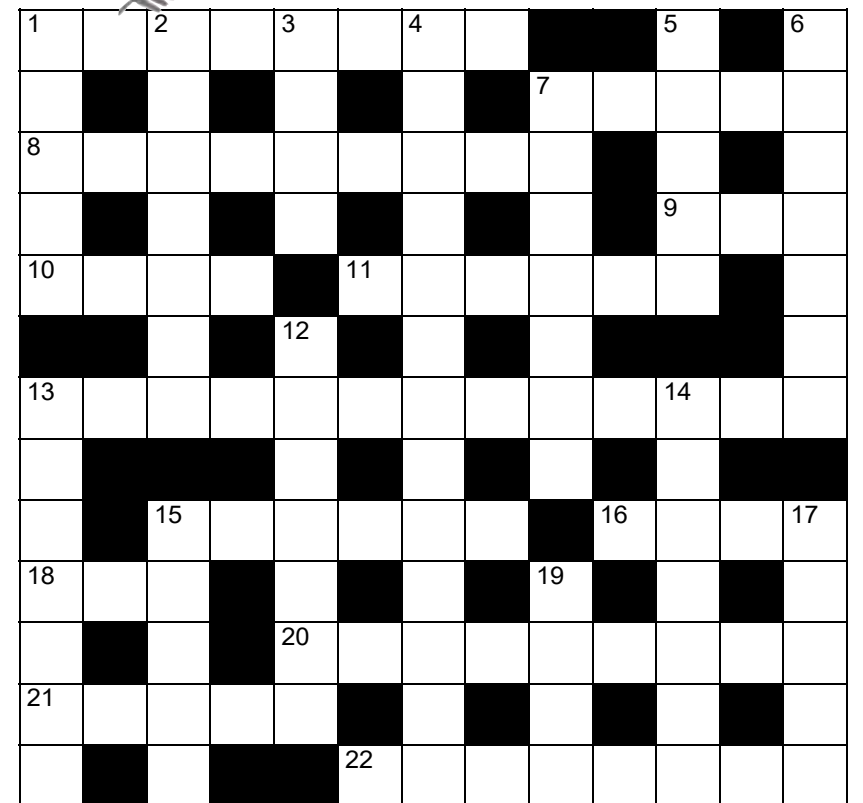
Taumarunui/Ohura Ward Community Board
Molly Jeffries 021-431-833; Luke Pepper 027-329-2849; Aroha Rudkin 027-873-0061; Sophie Stockbridge 020-401-11190; Oriwia Wanakore 027-222-7872. RDC rep Lyn Neeson 027-353-7907 (texts only)

Waimarino-Waiouru Community Board
John 'Luigi' Hotter, 027-274-2616; Stu Robinson 021-024-07657; Kay Henare 027-924-7252; Colin Pakai 021-091-67315; Angel Reid 027-431-6327. RDC rep Rabbit Nottage, 021 111 6514.

Guidelines is published free of charge. Please help us to keep it up to date – call us if your details change, or if you see something that needs changing: 06-385-8532

THE CROSSWORD

1908



©THE PUZZLE COMPANY

Across

1. Major product/model in a company's range (8)
7. New Zealand's most northerly island (5)
8. Ink container (9)
9. Modern music genre (3)
- 10/11. Broadcaster who hosted the America's Cup and Olympics coverage on TVNZ in 2021 (4,6)
13. Scheming trader (7-6)
15. Public park (6)
16. Make a garment with wool (4)
18. Annual virus (3)
20. Sunday roast jug (5,4)
21. Scope (5)
22. Jail term (8)

Down

1. Aspect (5)
2. Organise (7)
3. Painful (4)
4. Unspecified (13)
5. Game area (5)
6. Swimming shoe (7)
7. Sports official (7)
12. Feathers (7)
13. System administered by WINZ (7)
14. New Zealand university created in 1990 (7)
15. Toilet (inf) (5)
17. Designation (5)
19. Abscess (4)

Previous solution

Across: 1. Marlborough, 8. Glacier, 9. Small, 10. Iota, 11. Lattice, 12. Pry, 13. Isle, 15. Lego, 17. Tie, 19. Abolish, 20. Evil, 23. Armed, 24. Shindig, 25. Necessitate.
Down: 1. Magpie, 2. React, 3. Bait, 4. Rarely, 5. Unsettle, 6. Heading, 7. Buller, 12. Periodic, 14. Showman, 16. Rakaia, 17. Thesis, 18. Plague, 21. Vodka, 22. Kiwi.



ISSN 1170-1676 (print)
ISSN 1178-7406 (online)

Published by Ruapehu Media Ltd

Phone (06) 385 8532

45 Clyde Street, Ohakune.
Ruapehu's only locally owned weekly community newspaper. Established 1983.

Reaching homes every Wednesday in Ohakune, National Park, Raetihi, Waiouru and surrounding rural areas.

Publishing Editor:
Robert Milne – robert@ruapehubulletin.co.nz

Advertising Rep:
Jude Chevin – ads@ruapehubulletin.co.nz

Printed by Stuff Printers, Petone

Advertising Deadline 5pm Friday

RUAPEHU Summertime

BULLETIN

Priceless newspaper
Summer 2021-2022



Your guide to
Ruapehu in
summer

The Mountains to Sea mountain bike trail includes the scenic Whanganui River Road.

Let's tell our visitors what there
is to do in Ruapehu!

Out for the summer School Holidays

Book your space – call Jude 06 385 8532
or email: ads@ruapehubulletin.co.nz

Rousing return for Ruapehu's much-loved festival

After a two-year hiatus, the Ruapehu Culture Festival hosted by Raetihi School last week was a welcome return for Waimarino Schools – and some from further afield – to share their kapahaka skills.

Raetihi School, Orautoha, Ohakune, National Park as well as Taihape St Joseph's, Mataroa, Te Kura Kaupapa Māori o Ngati Rangī, along with several early childhood centres took part in the event. They were Te Kohanga Reo o Manu Korero, Te Kohanga Reo o Nga Morehu, Te Ha o Nga Mokopuna - Ohakune Kindergarten and Te Kohanga Reo o Mo te Whanau.

The event celebrates the area's community culture and one of the organisers, Kay Henare, said the feedback has been really good, with many overwhelmed to be back together.

"The kids were buzzing – they loved every minute of it," said Kay Henare.

Around 500 participants took to the stage under the Raetihi School clear span space, with numerous parents, grandparents and others enjoying the entertainment.

Some regular schools weren't able to attend for various reasons, but they still sent people along to help with the running of the event.

Kay Henare said the organisers were looking forward to building on the event, with a view to the 30th festival in 2024.



Clockwise from top: TKKM o Ngati Rangī; Raetihi School; Ohakune Primary School; Ohakune Kindergarten, Orautoha, National Park. Photos by Liz Brooker, Toi Communications.



Letters

Rates for skiing?

• Last Friday RAL life pass holders were invited by MBIE to engage in a brief survey indicating whether they would be prepared to pay a one off \$2500 transfer fee and several annual levies of \$200-300 to continue the validity of their passes on the Mt Ruapehu skifields. A successful uptake would prompt government to further support a restructured skifield operating entity.

While this group is most likely an early casualty of RAL's demise, the thousands they will each lose will pale into insignificance when compared with that which property owners – both residents and holiday home owners – will lose should skifield operations not be resumed.

This industry is so important to the Ruapehu region that at best tens of thousands will be wiped off the value of each property with a worst case scenario seeing values more than halve, although this would only take values back to what they were pre pandemic. Holiday homes will fall first. Their reduced values will flow right through the region as demand plummets. If my business survives I would conservatively expect millions to be wiped from its value.

To support renewed operations, serious consideration must be given by the Ruapehu District Council to implementing a region-wide targeted rate – I recall paying as such for the Ohakune Mainstreet development.

Nobody likes rate increases but \$200-300 a year for say five years would raise up to \$10 million, cheap insurance against the potential impact on (for many) our most valuable asset.

While the life pass holder initiative is a great start, particularly if supported by central government, it can't be left to such a small group of individuals to do the heavy lifting.

They will need everyone's help and everyone will be affected should snow sports cease on Mt Ruapehu.

Even the most resilient farmer, those least likely to be affected, will get complaints from the better half when cafes and restaurants start closing!

Mark Sandiford

The Park Hotel owner, National Park Village, RAL unsecured creditor (through The Park), Residential property owner, NPV, RAL shareholder, RAL Life Pass Holder

Two-day power cut to cut trees

• Powerco's recently scheduled 7.5-hour working-day blackouts for two consecutive days in late November across 144 houses simply beggars belief.

Where in New Zealand is it deemed acceptable to turn off the power to over 30% of a town because someone

simply forgot to keep up with the gardening?

Surely this mahi could, if not should, have been scheduled across our never-ending run of annually planned outages?

Or, have national office only just learned about our 100 year oaks on Duncan, which seem to have suddenly exhibited a mysterious massive winter growth spurt worthy of listing in the Guinness Book of Records?

Powerco claim to be committed to "ensuring reliable and resilient networks", but surely to start doing this there needs to be robust hazard identification management planning with the appropriate levels of resource committed to the mitigation of any ongoing issues identified.

I'm sure if 30% of downtown Wellington was being turned off for a little urgent tree trimming, every resource would be pulled in to ensure this mahi could be done with as little disruption as possible, while every breathing arborist is thrown at it.

I'm still unsure just how I'm going to work from home and while there is no offer of compensation for the company's inability to "ensuring reliable and resilient networks", I just hope this doesn't happen again next year when Powerco discover there are also 100-year old oaks on Ward Street.

Liz Brooker

Powerco replies:

Powerco has scheduled a planned power outage on 28-29 November from 8.30am to 4pm, so that crews can safely remove a large tree growing into lines near Grey Street.

This tree has caused power outages for the Raetihi community in the past, and will continue to unless it is removed.

The size and location of the tree means it will take some time to remove, which is why the work is scheduled over two consecutive days. Our contractor will have two arborist crews working at this time so that they can get as much done as possible, as quickly as possible.

We know it's difficult to be without power and that there's never a truly convenient time to have an outage. We always aim to schedule planned outages in a way that minimises disruption to customers but it's not always possible to find a time that suits everyone.

Because our planned maintenance requires planned outages for around 150,000 homes and businesses each year, we're unable to provide compensation or generators to everyone impacted.

We thank our customers for their patience and understanding.

Powerco Media Team

Lambs gambol at Raetihi



Raetihi School's pets were out and about recently for their pet day, with lots of lambs amongst the furry and woolly friends. Prize results: leading lamb Ihaia Hawira; calling lamb Brooke Van Der Lubbe; rearing lamb Melody Ritchfield; dressed lamb Ffion Shaw; winner overall Ffion Shaw; runner-up overall Ihaia Hawira. Photo: Raetihi School.



Experts ~ at your service

Fencing

PLAYLE FENCING
Simon Playle
Owner/Operator
027 366 9125
playlefencing@hotmail.com

Services Offered

- Fence Repairs & Maintenance
- Rural Residential & Urban Fencing
- Stock Yards Cattle Sheep Deer
- Digger & Bulldozer Hireage

Lawns & Section Maintenance

Ph 027 366 9125

Landscaping

Nature SCAPERS
MAINTENANCE • PLANTING • DESIGN

Certified Horticulturists (Hort.Cert.NZ)

KRISTIN 022 350 9220 VICKI 021 606 743

facebook.com/naturescapersnz

naturescapersnz@gmail.com

Septic Tank Work

SPRING FLUSH
L&C Bennett

Covering the Waimarino & Taihape Areas.
Now is the time before Christmas!

Fast and efficient cleaning of septic tanks.
We clean fresh water tanks and refill if needed.

Get in touch with us & book your tank service
Email: benfurn@extra.co.nz

Ph 06 388 0452

Plasterer

Trevor Scott Plastering

Gib fixing
Plastering
Painting
Vacuum sanding
Free Quotes
treviskihard@gmail.com

Ph 0272 412 928

Retail & Homekill Butchery

ABSOLUTE MEATS
TAUMARUNUI

Open Monday to Friday 8.30 - 5.30
and Saturdays 8.30 - 1.00
109 Hakiaha St, Taumarunui
butchery@absolutemeats.co.nz

Ph 07 895 7570

Land development

VERSATILE BOBCATS LTD

Bobcat+Truck Hire
Section clearing
Driveways Formed

For All Your Land Development Requirements

Contact Steve Gray Free Quotes
PH: 0276 854 854 / 06 3854 854

Ph 06-385-4854

Plumbing / Drainlaying

For all your Plumbing,
Gasfitting & Drainlaying needs

MH
Matt Hobbs
Plumbing & Drainlaying Ltd

52 Seddon St, Raetihi
admin@matthobbsplumbing.co.nz
www.matthobbsplumbing.co.nz

Ph 021 0263 4206

Property Management

Shelley Oliver
Property Manager

Your Local
Property Managers
Your Property Management Specialists

Only 8.5% + GST m. 027 903 5566
Commission on rentals p. 0800 114 978
All inclusive e. shelley@yplm.co.nz
No other fees w. www.yplm.co.nz

* No Inspection fees * No Admission Fees * No Account Fees
* No Disbursement Fees * No Maintenance Fees * No Tribunal Fees

Ph 027 903 5566

Auto Service

TOYOTA RUAPEHU TOYOTA

- WoF – cars \$68, trailers \$45 all makes & models
- Qualified mechanics
- Tyres – cars, motorbikes, ATVs, side-by-side
- Batteries

You might have seen the for sale sign on our site, yes the building is for sale but Ruapehu Motors is not and we are here to stay

Cnr Seddon St & Valley Rd, Raetihi
wanganutoyota.co.nz
Right here in Raetihi

Ph 06-385 4216

Hire

Why buy it ... hire it!
TWEEDDALE HIRE

CHECK OUT OUR EXTENSIVE RANGE OF HIRE EQUIPMENT.
SEE OUR WEBSITE
WWW.TWEEDDALE.CO.NZ

PARTY HIRE: floodlights, tables & chairs, heaters, spit roasters, wheelie bins, chafing dishes, crockery & cutlery, dehumidifier, flute & wine glasses, universal food cooker, portaloos & showers, 3-section marquee, horse float.

Marquee Hire

FOR THE BIG JOBS: digger hire, cherry pickers, pumps, wood splitters, generators, car trailers, post hole borers, furniture trailer, concrete equipment, rollers & compactors, portable trencher

Ph 06 387 5022

Engineering

Ohakune ENGINEERING

- Manufacturing and repairs
- Access equipment hire
- Engineering supplies
- BOC gases
- 20T & 50T crane hire

29 Burns St, Ohakune.
027 473 0188 Mark or 027 444 2058 Bruce
Email: sales@ohakune-eng.co.nz

Ph 06 385 8952

Furnishers

WANGANUI FURNISHERS
ESTABLISHED 1916

Quality furniture flooring and window treatments for the discerning

Geoff Anderson 33 Victoria Avenue, Wanganui
027 283 9551 email wangafurn@xtra.co.nz

Ph 06 345 4554

Plumbing / Drainlaying

B&M PLUMBING LTD

- Plumbing & Drainlaying
- Pumps - sales, servicing & installation of all pumps
- Fires & Solar
- 5 Ton Digger with Augers, Ditchwitch & Tip Truck

"Your local Registered Certifier"

B&M PLUMBING LIMITED Call Brian 027 436 1075
Email: bmfred@xtra.co.nz Master Plumbers

Ph 06 385 4718

Marquee Hire

FOR THE BIG JOBS: digger hire, cherry pickers, pumps, wood splitters, generators, car trailers, post hole borers, furniture trailer, concrete equipment, rollers & compactors, portable trencher

Ph 06 387 5022

Upholsterers

WestlornE

- Furniture Upholstery
- Vehicle Upholstery
- Tarpaulins • Canvas & Leather
- Shade sails • Saddlery

Factory, SH49, Tangiwai, Ohakune.
Mobile 0274-467-289 Fax 06-385-8483
email: westlorne@xtra.co.nz
www.westlorne.co.nz

Ph 06 385 8487

Appliances

Choose the best heat pump designed to heat your home

MITSUBISHI ELECTRIC HYPERCORE
Free quotes. Total 5-year Warranty.
Your Local 100% Independent Store & Heat Pump Installers

Ohakune TV Electrical

Ph 06 385 8700

Your business here!

WWW.ohakune.info

Ohakune... your mountain town
For everything Ohakune
Contact us ads@ruapehubulletin.co.nz or 06 385 8532

Heat Pumps

Call our Refrigeration Engineers for a **FREE Heat Pump quote**

- Interest free terms
- Professional Accredited Installer
- 6 year warranty

0800 10 70 90

FUJITSU Central Refrigeration trading as **100% APPLIANCES**
NEW ZEALAND'S FAVOURITE AIR* 137 Hakaha Street, Taumarunui

Ph 07 895 7348

Local Carpenter/Renovator

- Interior & Exterior house painting
- Timber repairs
- Fence & Deck building
- Garden design & landscaping

Call Luke for a free quote

Ph 022 414 5303

Motor Vehicle Sales

Ford Go Further **mazda**

Award Winning Models

Call Dave anytime... **027 485 7693**
davescott@xtra.co.nz
I come to see you from my home office

Wanganui Motors | Ford | Mazda
Ph 027 485 7693

Machinery Hire

OHAKUNE MACHINERY
HIRE & TRANSPORT LIMITED

DRY HIRE

12t digger – \$50 + GST per hour
20t digger – \$60 + GST per hour
CAT D6R dozer, root rake & pipe layer

- Full contracting available
- Heavy haulage
- Attachment hire

Contact Cam
Ph 027 586 1015

Gas Fitting

Plumbing & Gasfitting

Cut down on your power bill.
Go gas hot water & heating – supplied and installed.
Call for a consultation.

Phone Denise 027 482 7488 or
Email accounts@aplumbingandgas.co.nz

Ph 06 343 6866

Carpet Cleaning

ChemDry
Dries. Cleans. Healthier.

WANGANUI CARPET & UPHOLSTERY CLEANING
24 HOUR FLOOD CALLOUT

We specialise in stains, odours and hard to clean carpets and fabrics.
P.U.R.T - Pet Urine Removal Treatment
cdwanganui@outlook.co.nz
www.chemdry.co.nz
Wanganui & Ruapehu Regions

0800 22 78 22

Auto Services

AUTO SERVICE CENTRE **Repco** **BRIDGESTONE**

Authorised Holden Service Centre

Full workshop services for all vehicles, wheel alignments, computer diagnostics, warrant of fitness inspections, parts, batteries, engine oils.

84 Clyde Street, Ohakune
After hours 027 448 4080
autoservicecentre@hotmail.co.nz

Ph 06 385 9222

Lawyers

YOUR DIGITAL LAWYERS

CALL US
TO MAKE AN APPOINTMENT
(06)281 3461

WE CAN MEET WITH YOU VIA VIDEO CONFERENCE FROM YOUR SMARTPHONE, TABLET OR COMPUTER
www.dewhirstlaw.co.nz

Ph 06 281 3461

Electrician

Are you looking for an electrician who:

- Turns up on time?
- Keeps his promises?
- Offers efficient service & sound advice?

Then call Jake Fah at

Mountain Electrical
REGISTERED ELECTRICIAN
Ohakune - Raetihi - Rangataua - Horopito - National Park
PH. 06 385 3393

Ph 021 770 123

Insulation

INSULATION SUBSIDIES AVAILABLE*
*Terms and conditions apply

Warmer Kiwi Homes **EasyInsulation**
Heating and Ventilation

0800 327 946
www.easyinsulation.co.nz

0800 327 946

Building Supplies

PlaceMakers

OHAKUNE DEPOT

FOR YOUR BUILDING PROJECT & DIY NEEDS
MON to FRI – 7.30am – 5pm | SAT 9am – midday

7 BURNS ST, OHAKUNE
Ph 06-385 8414

BUSINESS NOTICES

GARAGE DOORS, all types of garage doors, specialising in sectional garage doors and auto openers. For a free quote ring Alex Ferrier Building Services Ltd on 07-895-5890.

LAWNMOWING AND SECTION maintenance – Phone Alpine Property Services 0800-896-689 or 027-353-5189 email: info@alpinelawns.co.nz.

FOR SALE

FIREWOOD LOGS for sale: pine, gum and wattle logs. 5 or 10 ton truck loads. Free delivery in the Waimarino. Call/text Keith for prices. 021 055 4794

FORESTRY SEEDLINGS, Management Services. Grow your Carbon Now. Local Expertise available. Waimarino Tree Resource. Ian 027 444 3441

WATER TROUGHS, cattle or sheep. Different sizes. Delivered price quoted. Ph 0800-487-633.

GRAZING WANTED

GRAZING WANTED for dairy weaners and heifers. Contact Bryan 027 4154 122.

BUSINESS NOTICES

HAYCO STOCKFEEDS
Standing grass wanted to buy this summer
0800 926 315 email: neildrury@xtra.co.nz

Insulation Subsidies
Call Easy Insulation
0800 327 946

LIVESTOCK FOR SALE

WR DYER Livestock
Independent Livestock Business
STOCK WANTED
50 ANGUS STEERS 450kg
CLIENT LOOKING FOR A Dry Stock Farm FOR LEASE OR SHARE FARM
GRANT HALL
P: 027 596 7181 E: grant@dylivestock.co.nz
www.dylivestock.co.nz

PUBLIC NOTICES

MEETINGS

The following meetings of Horizons Regional Council will be held during **December 2022** in the Tararua Room, Regional House, 11-15 Victoria Avenue, Palmerston North, unless otherwise advised:

Tuesday, 6 December

11.00am Regional Transport Committee
7.00pm Manawatū River Users Advisory Group

Wednesday, 14 December

1.00pm Regional Council (*livestreamed*)

Should Members of the public wish to speak at Meetings, they are advised to view details on the Horizons' website www.horizons.govt.nz or phone 0508 800 800.

M J McCartney
CHIEF EXECUTIVE



horizons.govt.nz



PUBLIC NOTICES

Proprietors of Pipiriki Township No. 1 and Other Blocks Incorporated Notice of Hui

The Annual General Hui for 2022 will be held at Paraweka Marae, Pipiriki on Sunday 11 December 2022 at 10am

Proprietors of Pipiriki Township No. 1 and Other Blocks Incorporated Notice of Hui

The E Tū Pipiriki Special Hui will be held at Paraweka Marae, Pipiriki on Saturday 10 December 2022 at 10am

Transport to both hui in Pipiriki will be provided by bus which will leave from Ohakune at Osteria on Clyde Street at 9am and a further pick up in Raetihi at the Medical Centre on Seddon Street on Saturday 10 and Sunday 11 December.

For more information, documents and any updates, go to www.pipiriki.co.nz

To provide numbers, please contact Robert Spicer on 06 345 1166

PUBLIC NOTICE

Audit and Risk Committee Independent Member



Ātihaū-Whanganui Incorporation, or AWHI is a collective of over 9000 shareholders – whānau of the Whanganui iwi. Ātihaū-Whanganui Incorporation was created in 1969, it marked the end of a long battle for the return of their ancestral land. Today it farms 21,000 effective hectares with Sheep, Beef, Dairy and Apiary operations together with a portfolio of investments.

Our purpose, our legacy, is to look after nature, so nature can look after us. To hold, protect and rejuvenate our ancestral lands so we can continue supporting our people and preserving our culture for the generations to come.

We are currently seeking an Independent Member to join the Audit and Risk Committee, one of the supporting pillars of how the organisation is run.

As an Independent Member of the Audit and Risk Committee, you will provide the Board with guidance on risk management, governance, and internal control. This role will focus on financial lead elements as well as internal and external audits.

Reviewing and considering internal processes and decision-making, the ARC reports to the Board and ensures that adequate internal controls are in place, that risks are identified and mitigated, and that governance meets best practice standards.

ARC also provides advice to the Board to ensure they have the appropriate procedures and systems in place to maximise economy, efficiency, and effectiveness. Additionally, ARC independently scrutinises new initiatives and policy changes, raising any concerns or opportunities with the Board.

To be considered as an Audit and Risk Committee Independent Member, you will need:

- Significant, relevant, and recent financial management experience at a senior level
- Experience of monitoring and holding Senior Management to account (via Board or similar ARC appointment(s))
- Skill and expertise in audit, risk management and corporate governance
- The ability to provide support and constructive challenge that balances risk appetite with progressive solutions to issues faced by the sector
- Highly developed analytical skills
- A Degree or relevant further education or professional qualification in accountancy, Chartered Accountant (CA) or similar recognised professional accountancy qualification

A Te Ao Māori base of skills, experience connections and knowledge are an advantage.

The closing date for this role is 3rd December 2022. So, if you're interested in this exceptional opportunity as an Audit and Risk Committee Independent Member, please apply to renee@atihau.com

HINENGAKAU MAATUA WHANGAI NOTICE OF ANNUAL GENERAL MEETING

Thursday, 1st December 2022
Commencing at 4:00pm

- 1 Opening/Karakia
- 2 Apologies
- 3 Minutes of Previous Annual General Meeting
- 4 Chair Report
- 5 Financial Audit Accounts
- 6 Appointment of Auditor
- 7 General Business

Hinengakau Maatua Whangai
14 Manuaute Street, Taumarunui
Telephone (07) 895 6013
Email: admin@hmw.org.nz

Nau Mai Haere Mai

SITUATIONS VACANT



- Chefs
 - Restaurant (FOH)
 - Housekeeping
- Manager & Attendants**

All applicants must have NZ Residency or a valid NZ Work Visa.

Staff accommodation may be available, please enquire on application if required.

Send CV to eric.jenkins@the-park.co.nz

Deadline for all advertising bookings and copy is **5pm Fridays!**



ANNUAL HUI

Saturday, 3 December 2022
Great Lake Centre, 5 Story PI, Taupō

- 8:45am RATS testing
- 9:30am Registrations open
- 10:00am Hui commences
- 12:00pm Lunch

The hui will be in person and available via livestream. Please register for the livestream link via the Tūwharetoa Māori Trust Board website www.tuwharetoa.co.nz/annual-hui-2022

Pre-registration for the livestream link closes 12pm on Thursday, 1 December 2022.

For those attending the hui in person a negative RATS test will be required to attend and testing will be done onsite prior to registration.

A digital copy of the Annual Report 2022 and Financial Statements for Year End 30 June 2022 will be available on request from our offices in the Town Centre, Turangi, or 81 Horomatangi Street Taupō, from Monday 7 November 2022.

Hard copies of the Annual Report 2022, Financial Statements for Year End 30 June 2022, and Hui-a-Tau Minutes 2021 will be made available at the hui.

Apologies can be registered by:
Email: annualhui@tuwharetoa.co.nz
Phone: 07 386 8832 or 07 376 5086

Rakeipoho Taiaroa, Chief Executive Officer

For everything Ohakune ...
www.ohakune.info

PUBLIC NOTICES

PUBLIC NOTICES

Section 101, Sale and Supply of Alcohol Act 2012
Ohakune Brewers Limited (formerly known as Lab 4625 Limited) has made an application to the District Licensing Committee at Ruapehu District Council for the **issue of an On Licence** in respect of the premises situated at **19 Goldfinch Street, Ohakune** known as **Ruapehu Brewing Company and Big Mountain Mead**. The general nature of the business to be conducted under the licence is that of a **Tavern**. The days on which and the hours during which alcohol is intended to be sold under the licence are: **Monday – Sunday 12.00pm – 9.00pm**.

The application may be inspected during ordinary office hours at the office of the Ruapehu District Licensing Committee at Ruapehu District Council, 59-63 Huia Street, Taumarunui.

Any person who is entitled to object and who wishes to object to the issue of the licence may, not later than 15 working days after the date of the publication of this notice, file a notice in writing of the objection with the Secretary of the District Licensing Committee at Ruapehu District Council, Private Bag 1001, Taumarunui 3946.

No objections to the issue of a licence may be made in relation to a matter other than a matter specified in section 105(1) of the Sale and Supply of Alcohol Act 2012. This is the first publication of this notice.

WANTED KNOWN

We are a family with a sister of whom we had no knowledge until recently. In the early to mid 1930s our mother, maiden name Buckley, gave birth to a daughter who we think was adopted. In the mid 1960s this sister rang Mum's brother in Te Kuiti seeking contact. We were recently told by our cousins of this call. The only thing they remember is that she lived in Raetihi. If anyone recognises anything about her or her family if she has one, we would be thrilled to know them. Please contact me, Paul Verry, if you can suggest her name or can help in any way by phoning 027 587 8858.

PUBLIC NOTICES

HUI A TAU - AGM Nau mai e ngā uri o Ngā Mōkai Papakāinga.

18 Dec 2022
 Ngā Mōkai Papakāinga
 Cnr Ōruakukuru & Whangaehu Valley Rds,
 Karioi, Ōhakune
 Hōtaka - Agenda

12pm - Whakatau & Kai
 1pm - Hui

1. Minutes of previous AGM
2. Matters arising from previous minutes
3. Financial Report
4. Trustee endorsement I Māori Land Court application
5. Marae Constitution
6. Maintenance and working bees
7. Fundraising
8. General business

3pm - Ka mutu

Please email ngamokai@xtra.co.nz if you are attending.

PUBLIC NOTICE

ĀTIHAU-WHANGANUI INC. Notice of Annual General Meeting 2022



Notice is hereby given that the Annual General Meeting of shareholders of the Āti Hau Whanganui Incorporation will be held at the Whanganui Racecourse, Purnell Street, Whanganui on **Friday 9 December 2022 commencing at 9am. Registration from 8am onwards.**

AGENDA

1. Karakia
2. Mihimihi
3. Apologies – written
4. Committee of Management
 To fill 3 (three) vacancies: Shar Amner and Whatarangi Murphy-Peehi have retired by rotation and seek re-election. Mavis Mullins has retired by rotation and does not seek re-election. Nominations have been received from Sarah Bell, Murray Haitana and Tawhiao McMaster.
5. Board and CEO Report
6. Financial Report
7. Te Āti Hau Trust Report
8. Dividend
 To adopt the recommendation of the Committee of Management: That a dividend of 72 cents a share be paid in December 2022 pursuant to section 259 (1) (c) of Te Ture Whenua Maori Act 1993.
9. Appointment of Auditors
 Silks Audit are re-appointed pursuant to section 277(2) of Te Ture Whenua Maori Act 1993.
10. Appointment of Share Valuer
 To appoint Silks Audit as Share Valuer.
11. Kaumatua Grant
 To approve, by show of hands, a Kaumatua grant of \$100 to kaumatua for travel costs associated with the Annual General Meeting. Payment to be by direct credit.
12. Te Āti Hau Trust Grant
 To authorise a grant to Te Āti Hau Trust of \$487,000 for the 2022/2023 financial year for its charitable purposes.
13. Special Resolution
 Tuwhakairikawa Harata Haitana Whanau Trust: "That pursuant to section 280 of Te Ture Whenua Maori Act 1993 sub-section (3) (b), approval hereby be given for an application be made to the Maori Land Court to investigate the affairs of the incorporation pursuant to Section 280(1) with the scope of the investigation to be determined by the Court."
14. Minutes: 10th December 2021 Annual General Meeting

Postal Voting

Shareholders may cast a postal vote by completing and sending the Postal Voting form to the Secretary. Postal Votes must reach the Secretary no later than 9am on Wednesday 7th December 2022.

Proxies

The Constitution permits shareholders who are unable to attend the meeting to appoint a proxy. No person shall vote as attorney or proxy at the meeting unless a copy of the power of attorney or notice of appointment of proxy properly completed is lodged at the office of the Incorporation no later than 9am on Wednesday 7th December 2022.

Paul Maguire, Secretary

SITUATIONS VACANT

VACANCIES



We have a number of exciting opportunities available.

If you are looking for a change, have the right attitude and skills we would love to hear from you.

Check out our website to apply.

www.Ruapehudc.govt.nz



Part-time Phlebotomist / Health Care Assistant

25 hours a week, Monday to Friday.

Experience preferred but training will be given to the right applicant.

Apply via email to tracy@rhl.org.nz

**Deadline for all
 advertising bookings
 and copy is
 5pm Fridays!**

It's important that we get your ad booking and copy in on time, so that we have time to check it, plan the best layout and work on producing a better paper for you!

Army out in force on Old Coach Road today

The Army is invading the Ohakune Old Coach Road trail today, Wednesday 23 November.

NZ Army Officer Cadets and Department of Conservation staff will be working to clear drains and vegetation along the length of the Old Coach Road between 8am and 5pm.

Cyclists and walkers are asked to take greater care when passing crews and travelling the Ohakune Old Coach Road track whilst they undertake these scheduled works.

"These works could not be achieved without the generous volunteer efforts of the Officer Cadet School of New Zealand," says DOC.

"The Department of Conservation would like to thank the NZ Army for contributing their time to help maintain this historic regional asset."



Ohakune Old Coach Road. Photo: Visit Ruapehu.

Design academic turns the spotlight on woolsheds

A Massey University lecturer and design expert is focusing attention on the importance of preserving New Zealand's most historic, colourful and community-oriented woolsheds.

Federated Farmers is helping Dr Annette O'Sullivan raise the \$30,000 she needs to complete her book.

Annette says she feels a sense of urgency to getting the book completed, as so many iconic woolsheds are being lost due to changes in land use and sheep farming.

The funding will be used to commission world-class photography of woolsheds from award-winning New Zealand photographer Jane Ussher, who is already well known for her beautiful work capturing New Zealand's iconic homesteads.

Feds has set up a PledgeMe campaign to raise the funds, which has already almost reached the \$5000 mark.

Anyone making a contribution will be thanked in print in the book. There are also discounted copies on offer and the chance to buy exclusive limited edition prints of the photography.

"It is important to remember where we've come from and this book is a great way to honour the history of the woolshed, the people who have worked in them and the product they make," Federated Farmers National meat and wool spokesperson Toby Williams says.

"We would gratefully appreciate your support for this book."

The link to the campaign is: <https://www.pledgeme.co.nz/projects/7349-historic-woolsheds-book-fund>

Time to step up predator free efforts

Have you noticed more native birds flitting about the streets of Ohakune? It could be partly thanks to the efforts of a small group of volunteers who monitor a series of Predator Free 2050 traps set out around the town, especially along the Mangawhero River Trail.

The Predator Free Ohakune group has had some success, trapping hundreds of rats as well as hedgehogs, stoats and possums and is calling for help to expand their network.

One of the first signs of success is reported to be an increase in the number of fantails around, which some people say has happened.

As well as the work of volunteers with Predator Free Ohakune, backyard trapping is a great way to help with the return of native wildlife to urban areas.

And with Ohakune being so close to Tongariro National Park, keeping a lid on urban pests can help with saving

native creatures in the park too.

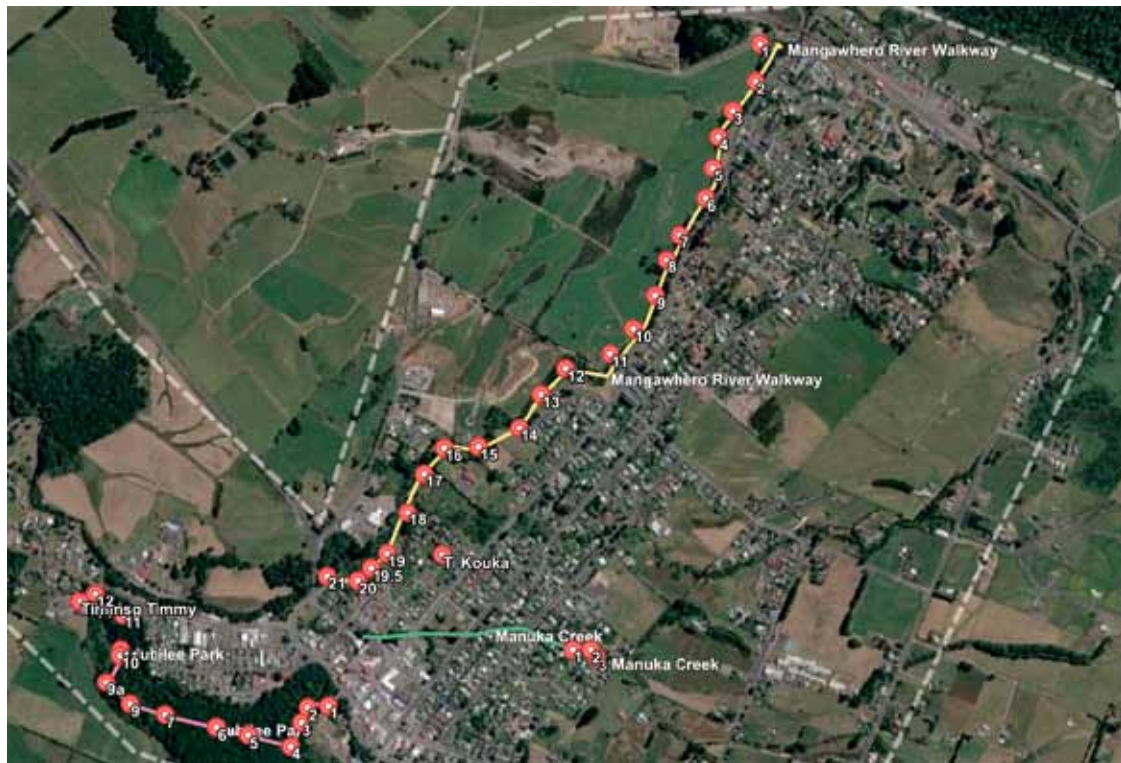
Predator Free Ohakune is calling for support from businesses to sponsor more traps.

The group already has a small amount of residual funds, which has been added to with a donation from Bolt Contracting who have added a \$500 donation.

The group also wants to build a comprehensive plan for how to properly cover the Ohakune urban area and wants to hear from people who also have traps, to add to the coverage map.

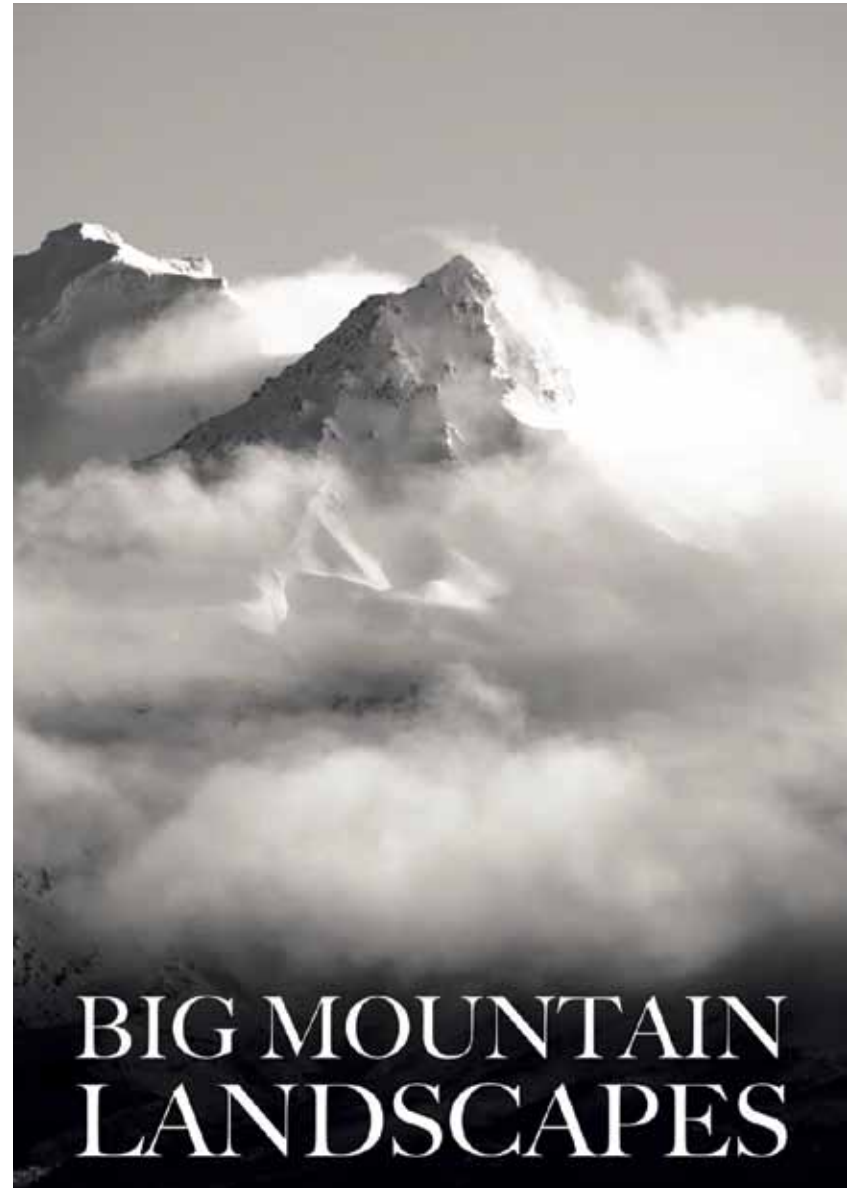
To get in touch, go to the Predator Free Ohakune facebook page, or phone Robert 027-23-11-844, or call the Bulletin on 06-385-8532.

Information on how to set up back yard trapping can be found at <https://www.doc.govt.nz/.../trap-predators-in-your-backyard/>



Predator Free Ohakune wants to expand on their pest control trapping in Ohakune.

Wild places and nature as art on show in Raetihi gallery



Sebastian Pischief finds evocative scenes.

Nature is art and is all around us, says Brett, Rangataua based wood artist.

And Sebastian Pischief sees art in the wild places, taking evocative photos around the world.

The pair have works on display in an exhibition at the Raetihi Arts Trust Gallery in the old BNZ in Seddon Street, Raetihi.

Brett says he "changes the frequency" of a rotting old piece of maire or kauri or totara or rimu (whatever speaks to him) that he comes across by hauling out a decaying stump or branch from the mud and recreating its past mightiness by carving something beautiful.

His works include bowls and platters to bring back the beauty of the powerful tree and its energy field, creating new life and

frequency.

All of his bowls are hand-carved with the help of an Arbortech tool and chisels.

Sebastian Pischief was born on the Chatham Islands in the late 90's, grew up in Hawkes Bay and graduated from Napier Boys' High School in 2015.

He says he spends time in wild places in search of the most picture perfect landscapes.

"I have been spending my time exploring the volcanic mountains of the Central North Island while working a dream job in Ohakune.

"A main goal for me while travelling was to visit the most extraordinary places that I could."

The exhibition is on until after Christmas.

Not a common sight!



That's not something you see every day - a Blokart rider outside the Whangamomona Hotel. Les Kerr-Bell was visiting a mate in the tiny town, on his way home from Sanson where he was the winner of the World heavyweight division in the world Blokart races in October.

stronger together...

NZR Central have recently broken the tradition of real estate in the area by deciding to join as a team.

The philosophy behind this is that by sharing all listings and commissions equally and working collaboratively, every NZR customer and client has the benefit of knowing that they have the entire sales team working as one on their behalf to ensure a positive and successful outcome is achieved.

Combining our individual experience, knowledge and skill set as well as true open communication between each member of the team, gives us that extra edge over other agencies and gives our clients and customers the certainty that nothing else stands in our way of ensuring they are provided with the best experience that they deserve.

With already proven sales success we pride ourselves on our honesty and integrity which is evidenced by the testimonials received.

We would love for you to join us and see what we can all achieve together!

Polly Ingles 027 315 8368 polly@nzs.nz	Kath Campbell 027 333 4381 kath@nzs.nz	Jenna Hovelle 027 361 0167 jenna@nzs.nz
---	---	--

NZR Central Limited | Licensed REAA 2008