

**HORNE
BROS**



Builder Joiners Glaziers

- Building/Alterations
- Joinery
- Design Work
- Automotive Glass

- Glass
- Kitchens
- Concrete Cutting

Old Station Road, Ohakune. Phone 06-385-8444



**Which way?
Ohakune speaks
P2**



**More votes bins around
P5**



**What state Ruapehu?
CEO writes
P8**



**Ohakune squash success
P12**

Mountain trail ‘for all to enjoy’

The Ngāti Rangi-led development of Te Ara Mangawhero shared cycle and walking track reached a key milestone last week with the public notification of the application for consent to build the first 8.8km of the trail going live for consultation.

The 21.3km walking and cycling trail will be built partly on previously used tram-line routes, to connect Tūroa to Ohakune. The proposed trail will traverse alpine, sub alpine and forested areas within the vicinity of the Ohakune Mountain Road.

The public notification is a pivotal moment for Ngāti Rangi iwi, the applicant, owner, concessionaire and builder of the trail.

Ten-year journey

“The consent will provide an opportunity to ensure that the majestic landscape surrounding Koro Ruapehu is upheld and looked after for the benefit of all, and provide opportunities for employment and economic growth for the district,” says Ngāti Rangi Pou Ārahi Helen Leahy.

“It has been nearly a ten-year journey for Ngāti Rangi to get to this point. We are so pleased to be able to centre the tupuna narrative in this build, to share the stories that will make this trail so unique.”

“Te Ara Mangawhero is designed with

family first in mind. The trail will gently meander down Koro and will allow for all generations and abilities to travel in both directions, for walker and cyclist,” said Paul Carr, manager of Ruapehu WorX who are contracted to build the trail.

Building together

“It is an opportunity for our community together to build and take ownership of connecting people to our place. To immerse them in the ngahere (forest), in the stories of Ngāti Rangi and for them to understand their relationship and responsibility to the protection of our environment. The trail is dual use, for walkers and cyclists and provides the opportunity for the reclamation of ourselves within our unique section of the Tongariro National Park, dual world heritage area,” said Ngāti Rangi chair Whetu Moataane.

“The impact of climate change has proven that we cannot solely rely on the ski-field when considering the economic growth of our region. Te Ara Mangawhero, in partnership with local organisations and regional tourism operators, provides us an opportunity to create something truly special and unique that belongs to us all,” said Mr Moataane.

Ngā Ara Tūhono trail champion Lynley

Turn to Page 3



Steam locomotive Ja1271 in full power, ready to head north to National Park, the Raurimu Spiral and then on to Auckland from Ohakune on Sunday. The Ohakune Junction was abuzz with passengers and rail enthusiasts who were following the train, as well as curious locals. The train, operated by Glenbrook Vintage Railway, Steam Incorporated with support from Main Trunk Rail Ohakune, was one of many vintage trains to visit the area, but the first steam locomotive for some time. Photo: Jude Chevin.



RETRO DAY

SATURDAY
1 OCT '22

#RETRODAYOHAKUNE
 #THEKITCHENOHAKUNE
 #TUROA_NZ #VISITRUAPEHU









Eating out in the Ruapehu District

CYPRUS TREE

79 Clyde St, Ohakune

Ph: 06 385 8857

Check out our new summer menu. Kiwi craft beers, boutique wines and cocktails to quench that summer thirst. Playroom for the kids, foomball, air hockey and spaces to keep the kids entertained. Spectacular mountain views. A great place for casual get togethers or special occasions. Contactless takeaways available. Open 7 days, 5pm till late.

KINGS BAR & RESTAURANT

3 Rimu St Ohakune Junction

Ph: 06 385 8848

Est in 1913, historic Kings offers an inviting menu by locally renown chefs, a great selection of boutique wines and is the exclusive venue to offer Ruapehu Brewing Company beers on tap. See our Facebook page for what's on. Wednesday – Friday from 4pm and Saturday and Sunday from 2pm.

POWDERKEG

Bottom of the mountain road

Ph: 06 385 8888

The iconic Powderkeg gives you that warm alpine feel with large open fires, hot mulled wine and a great craft beer selection. With over 30 years' commitment to service and good quality free range food. Follow us on Instagram @powderkegbar for our weekly deals, parties and giveaways. Great breakfast and delicious brunch cocktails. Open Monday to Friday 7am – 11am and 3pm - late. Saturday & Sunday 7am - late. See you at The Keg.

UTOPIA CAFE

47 Clyde St, Ohakune

Ph: 06 385 9120

Open 7 days from 7:30am – 3:30pm for all day breakfast and lunch. A cosy memorable atmosphere with a great range of cabinet food and beverages, including regional famous Volcanic coffee, Frappé and smoothies. Vegan/Gluten-free options for both savoury and sweet are available. Speedy free Wi-Fi! A perfect place for everybody!

Ruapehu up for \$4.12m ‘Better Off’ funding

Ruapehu's council has decided to apply for the \$4.12m Tranche 1 'Better Off' Funding available to it, but only include the \$540,000 Waimarino Social Housing Upgrade out of the nine proposed Tranche 1 projects it asked for community feedback on.

The remaining \$3.58m available in Tranche 1 will be used to establish a new discretionary community fund for the remaining Tranche 1 and other project ideas.

The new discretionary community fund will enable all the excellent new project ideas submitted as part of the Tranche 1 'Better Off' Fund engagement to be tested with the community.

The mayor, Don Cameron, said that the new Council will consult with the community and Iwi on the discretionary community fund projects as part of the 2023/24 Annual Plan Process in February / March next year.

"It should be noted that the circumstances and timeframe around which Council needed to make

some difficult decisions on the Tranche 1 'Better Off' Funding has been far from ideal," he said.

"With the term of the current Council coming to an end, we had limited time to seek community and Iwi feedback on what to do about the \$4.12m available in Tranche 1 and any project ideas," he said.

He said that, besides the time constraints, the discussions were complicated by some misunderstandings around the funding with some people seeing accepting it as support for the Government's three waters reform model.

"The \$2 billion 'Better Off' funding package is not for supporting three waters reform but to help councils position themselves for the future by investing in projects that enable growth and housing development, build resilience to climate change and natural hazards and/or improve community wellbeing.

"Whether we take the funding or not will not change the Government's planned imple-

mentation of three waters reform, but would significantly hinder Council's ability to improve things for our communities.

"The Waimarino Social Housing Upgrade project is a good example of this, where Council has been given responsibility for social housing where elderly tenants are living in cold, damp and mouldy conditions.

"Without the 'Better Off' Funding the urgently required repairs to lift the housing to healthy home standards would have started later with the costs falling on the ratepayer."

Mr Cameron added that despite the challenges Council feels they had an excellent level of quality engagement that captured a wide range of community views and new project ideas.

"I would like to thank everyone who took part and would encourage people to engage just as passionately on the projects in the new discretionary community fund as part of Annual Plan in February / March next year," he said.

Finding the way for Ohakune signs



Hori Te Ariki Mataki, at left, and Mikael Tuhaka hear the views on Ohakune signage and 'wayfinders' from council staff at the community hui at Te Pae Tata on Friday. The pair are part of the Ariki Creative Limited team that were gathering views and information from a wide range of community members on how to proceed on the "Ohakune Wayfinding and Signage Project". Organisers were pleased with the wide range of people who turned out and also with the unified views on where they see Ohakune in the future.

Vote **1**
Weston
Kirton
for Mayor

My priorities:

1. A full [rates review](#) to make them fairer plus [freeze water rates](#).
2. [Revitalise town centres](#) including National Park, Taumarunui, Ohakune, Raetihi.
3. Use government funding to upgrade the [Taumarunui War Memorial Hall](#).
4. Better [public transport](#) including passenger rail services.
5. Make it easier to build and create a [Community Housing Trust](#).
6. Diversify our [tourism experiences](#) and create [apprenticeships](#) for our young people.

**"Experience & Leadership
you can Trust"**

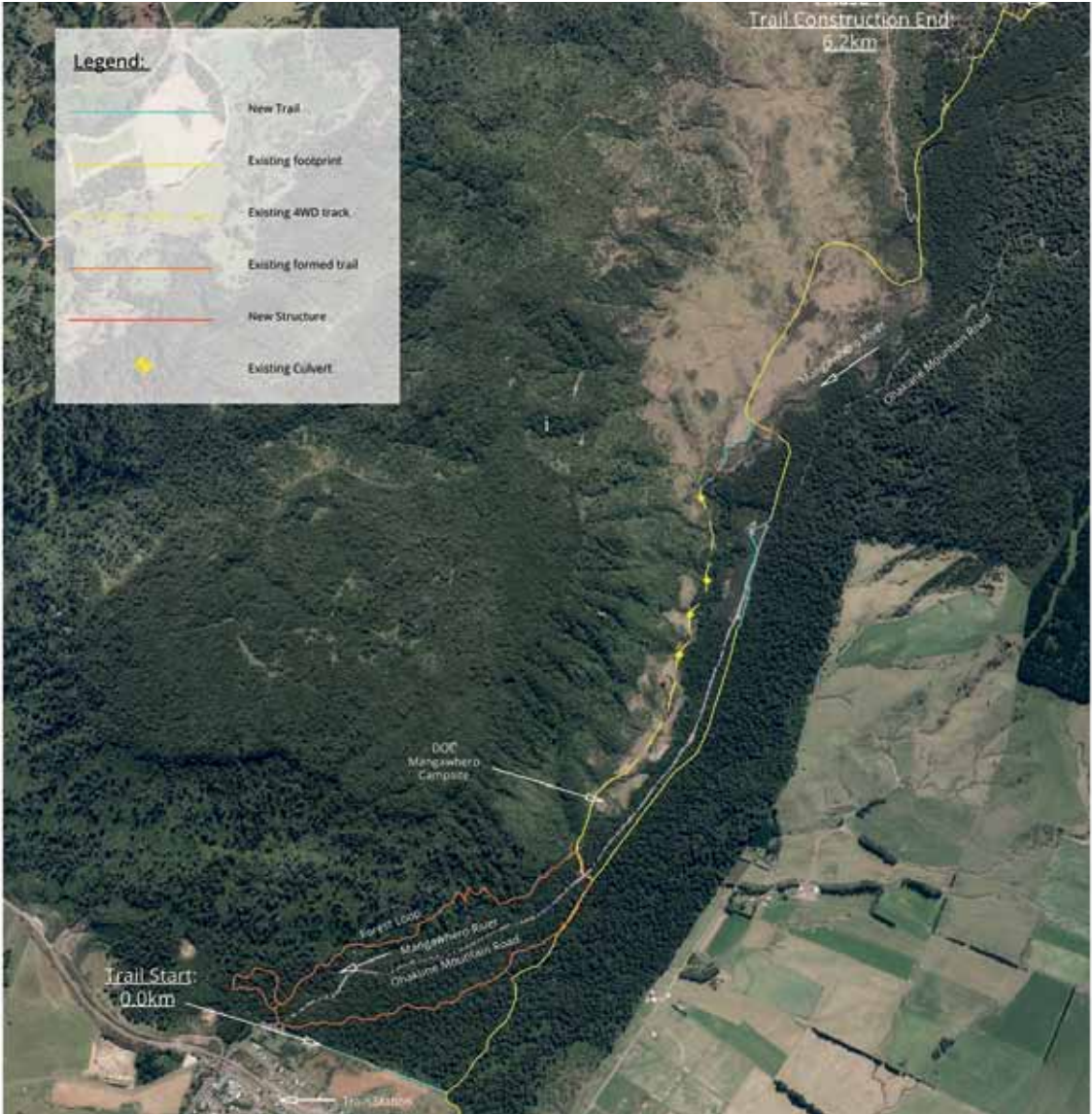
www.westonformayor.org

Authorised by weston@westonformayor.org

Te Ara Mangawhero ‘for all to enjoy’

From Page 1
Twyman said it was exciting to get to the point of “finally realising the dream”.
The trail would be great from an economic, environmental and well-being perspective, she said.
“Let’s look after Papatūānuku [the land] and let’s look after ourselves as well.
“It’s a really stunning piece of landscape, and the nice thing is we are not disturbing it. The trail is on old tramping tracks and bush tramways.”
It was important for people to get out and support the project, she said.
“This has been done with genuine care. It’s been done the right way, for the right reasons.
“Hopefully we can get building this summer.”
The public notification period is twenty working days, and submissions are sought from the community in order

to inform the Department of Conservation, who will then decide whether to grant consent for the project to begin development. Parallel to this, consents are also being sought from Horizons Regional Council. If consent is granted, Ngāti Rangi owned entity Ruapehu WorX plan to begin construction by the end of the calendar year, which will create more local jobs for local people, the embodiment of the Ruapehu WorX philosophy.
Te Ara Mangawhero will also form part of Ngā Ara Tuhono, the Mountains to the Sea cycle trail, providing a true mountain link for the trail network, and will connect with the Round the Mountain Track. Further resourcing for the project has been conditionally approved through the Government Regional Growth Fund.
Iwi and community members are encouraged to submit their support for consent of the project via the following link: <https://www.doc.govt.nz/.../2022-notified-applications/>




The route for the lower section of Te Ara Mangawhero, with the trail marked in yellow where it will use existing tram lines and tracks, and in blue where new trail will be built. The existing Mangawhero Forest Loop (in orange), will remain as a separate walking track (no bikes), except for a section of about 150 metres.



Surveyor Jim Brown marks out the trail on the upper Bennett and Punch tramline section. Photo Supplied.

Vote Adie Doyle for Mayor

For my vision and background, go to facebook and search Adie Doyle RDC



Authorised by Adie Doyle
adiedoylenz@gmail.com

CLICK HAPPY AND RUAPEHU DISTRICT LIBRARIES

SCHOOL HOLIDAY PHOTOGRAPHY WORKSHOP

FREE!

WHAT DO I BRING WITH ME?

CELLPHONE, TABLET, OR CAMERA

A PERSONAL TREASURE THAT IS IMPORTANT TO YOU





OHAKUNE LIBRARY

37 AYR STREET, OHAKUNE

10AM TO 3PM **THUR 6 OCTOBER**

FOR KIDS OVER 10 YEARS
KIDS UNDER 16 NEED TO ATTEND WITH AN ADULT

For more information and to book your place go to:
www.clickhappy.org/holiday/
★ limited spaces available

BE PART OF A NATIONAL YOUTH PHOTOGRAPHIC EXHIBITION THIS SCHOOL HOLIDAYS!

Letters

Mountains to Sea Te Hangaruru section – still missing

• You will be disappointed to learn that Council deferred any decision on the Mountains to Sea - Te Hangaruru section (previously known as The Missing Link) project for nine months when the annual planning takes place.

This defies logic in the process we established after much work by council officers: to consult the public with an approved list of projects; to consult and receive submissions; to make decisions based on the information received.

There was a huge response. The biggest-ever in Council consultations. From those who made the effort and made submissions there was a with a clear majority (75%) in favour Tranche One as consulted which included the Te Hangaruru project.

Council then made an illogical decision, especially as the Te Hangaruru project is the only project that benefits the whole District with an on-going increased economic return and creating employment opportunities. That is what economic development is all about. Grow the pie!

Quite contrary to the original decision of Council on 31 August and contrary to the weight of submissions received, contrary to all the professional advice, some confusion in the resolution making, DIA (Department of Internal Affairs) wants us to demonstrate community support.

So far there is support for the Mountains to Sea Project from: Department of Conservation, Horizons Regional Council, Ruapehu District Council, Whanganui District Council, Ohakune Incorporated, Ngāti Rangī, Uenuku, National Park Village Business Association, Mountains to Sea Governance, Tongariro Taupo Conservation Board, Kiwi Rail, widespread community support from submitters to the Partial Review of the Tongariro Management Plan, widespread community support from submitters to the Better Off Funding consultation, acceptance of the Mountains to Sea Business Case from MBIE, community input of voluntary labour, supply of materials, supply of machinery of over \$1,287,000. \$537,000 from the National Park Village community and over \$750,000 from the Waimarino community over many years.

The weight of evidence is compelling.

In addition DOC have provided us a work around the Conser-

vation Management Strategy issue by allowing the construction of a walking trail, which can later be re-designated as a walking and cycling trail when their General Policy Review is completed.

The Government has made it possible to 100% fund the Te Hangaruru section, which is unique. Usually co-funding is a requirement and has been a barrier for years.

We have consulted and had an overwhelming response.

By delaying a decision, you have to wonder why? All the necessary support has been demonstrated. There is no more information to be gleaned. The facts and the benefits are clear. So why procrastinate?

There are risks to delay: possibility of being de-railed to a wave of new local projects with no district-wide benefit and missing out completely, an increase in construction costs, another year's delay which means losing the increase in annual economic spend of \$2.75m by not completing the Mountains Sea Trail.

And finally, the Mountains to Sea project is not part of our usual annual planning process and is simply a project that can be done without ratepayer funding.

So it looks like we will have to go through the whole process again next year. Nuts!

Murray Wilson

Three Waters

• In reply to the mayor's comments (Letters, 21 September), I was not specifically targeting the Horopito Springs – I was talking about the whole package.

The year 2000 was significant – that was the year Opus Consultants employed by the RDC, surveyed the springs and gave it a big tick, not just for quality but for volume as well.

Moving to Ohakune, the holding dam supplying water – a group of locals cleaned the dam out in 2010. This procedure was always done once a year by our local fire brigade on a voluntary basis. The Brigade has not been used since about 2005.

The ever-present need for this to ensure quality would be eliminated by going direct to the sources.

Separate to Opus, samples from both Horopito and Ohakune were taken, sent away and tested with the correct procedure within world quality rules for drinking water standards that we must adhere to. The result was 'quality plus'.

The Three Waters Better Off funding proposed projects for Tranche 1 and 2 will have little impact on both our towns' quality and supply of water and should be a major concern to us all.

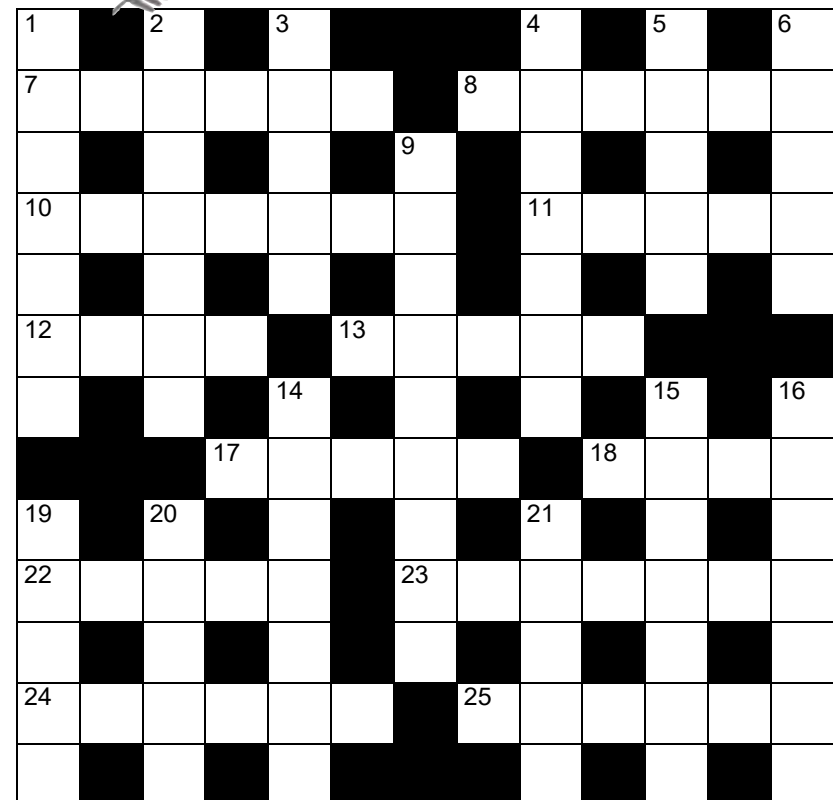
John McIlroy

Waimarino graduate



Ex-Ruapehu College student Judah Lyon has graduated from Auckland University of Technology with a Bachelor of Engineering Technology in Mechanical Engineering. He graduated on 21 September 2022. The son of Jim and Rachel Lyon, Judah was at Ruapehu College from 2014-18, and Head Boy in 2018.

THE NZ CROSSWORD



©THE PUZZLE COMPANY

Across

- 7/8. Top 10 listed company which started as an importer before becoming a manufacturer, ___ and ___ (6,6)
10. Type of business that keeps your things safe (7)
11. Barbecue utensil (5)
12. Manure (4)
13. Tea break (colloq) (5)
17. NZ's favourite TV personality for 2020, Hilary ___ (5)
18. Afternoon (inf) (4)
22. One of the South Island's alpine passes (5)
23. Betrothed (7)
24. Underling (6)
25. Squalid (6)

Down

1. Contentious rule in football (7)
2. Astonish (7)
3. Take it easy (5)
4. District that straddles the Canterbury and Otago regions (7)
5. Broke (colloq) (5)
6. School group (5)
9. Auckland suburb; English racecourse (9)
14. New Zealand food company founded in 1934 (7)
15. Class of warship which has existed since the days of sail (7)
16. Farewell (7)
19. Marine mammal people love to 'watch' (5)
20. Tomato or barbecue (5)
21. Hostility (abbr) (5)

Previous solution

Across: 1. Deplore, 4. Comic, 7. Bach, 8. Heirloom, 10. Te Mata Peak, 12. Paunch, 13. Spooky, 15. Mysterious, 18. Mince pie, 19. Solo, 20. Drink, 21. Encrypt.
Down: 1. Debut, 2. Pick-me-up, 3. Exempt, 4. Carlaw Park, 5. Moon, 6. Company, 9. Stickybeak, 11. Monotony, 12. Pyramid, 14. Strike, 16. Shout, 17. Anti.

HOLIDAY FUN

FOR THE KIDS

1ST - 16TH OCTOBER 2022

ARTS & CRAFTS
OPEN 10AM-3PM

KIDS HQ
OPEN ALL DAY

TAONGA ACTIVITY TRAIL
OPEN ALL DAY

NATIONAL ARMY MUSEUM
TE MATATOA

MUSEUM • CAFE • SHOP • GUIDED TOURS
OPEN DAILY 9AM - 4:30PM

STATE HIGHWAY 1, WAIOURU • WWW.ARMYMUSEUM.CO.NZ

More voting paper collection bin options

Ruapehu voters have many more options for getting their voting papers in for this election, with more voting bins now available at multiple new venues across the District.

Voting papers should have been received by all registered voters and need to be completed and returned before midday on election day, Saturday 8 October.

Any enrolled voter who has not received their voting papers by now should contact Council's Electoral Officer Tasha Paladin on 07 895 8188.

Chief executive Clive Manley said that Council was hoping to see a big lift in the number of people voting especially now that Council will have Māori Wards for the first time and a new northern Community Board.

"Voter turnout for the 2019 elections was 48.87%, which was an improvement on the 2016 turnout of 46.47% and just ahead of the average voter turnout for all councils of 48.3%," he said.

"Council would like to see as many people as possible having their say on who will represent them and our local community issues for the next three years."

Although a number of long serving elected members including the mayor are not standing again, there is strong competition for every seat on the District Council, Community Boards and Regional Council.

There are four candidates for mayor, 12 for six General Ward councillor seats, six for three Māori Ward seats, nine for five Taumarunui-Ohura Community Board seats, seven for five Waimarino-Waiouru Community Board seats, six for five Ohangwai-National Park Community Board seats and two for one Horizons Regional Council seat.

People wanting more information on the election including candidate profiles should see Council's website ruapehudc.govt.nz

Voting papers can be returned by post or dropped into one of the voting bins located at; Council offices in Taumarunui, Ohakune and Raetihi, Kakahi General Store, National Park Service Station, Raetihi Information Centre, New World Taumarunui, Unichem Taumarunui, and the Ohura, Matiere and Raetihi Cosmopolitan Clubs.

"If people are posting their voting papers in, we encourage them to do so as early as possible to ensure they are

received in time for the count," said Mr Manley.

"Any eligible voter without voting papers can come into their local Council office to make a special vote."

Mr Manley said that voting for Ruapehu District Council and the Community Boards was by Single Transferable Voting (STV), while voting for Horizons Regional Council was by First Past the Post (FPP).

"Voting by either STV or FPP is equally simple.

"With STV which is being used for the mayor, councillors and community board members, you rank the candidates you

want to vote for in order of preference by putting a 1 by your first choice candidate, a 2 by your second choice and so on.

"You can vote for as many, or as few candidates as you like. However, if you do not want to see someone elected leave the space by their name blank.

"For the FPP system, which Horizons is using, you simply put a tick alongside the candidate you wish to vote for.

"Preliminary results for the election will be available in the afternoon of election day, Saturday 8 October, and will be posted on Council's website and Facebook page," he said.

Vote Colin Pakai

for
Waiouru-Waimarino
Community Board

- Local government experience
- Lifetime of local knowledge
- My aim is to actively seek accountability for all ratepayers



Authorised by Colin Pakai, 29 State Highway 49, Waiouru



Chemist Baraq Al-Tuhafi with a voting paper collection bin at Unichem Taumarunui. Businesses all around Ruapehu are supporting the drive to get people voting in the local body elections by having voting paper collection bins on their premises.



New Houses Developments Alterations

Commercial Reclads Relocatables

P: 06 777 3550

E: admin@neate.co.nz

PO: Box 45 4660

Visit Us: <https://www.neate.co.nz/>





• BOOST OUR ECONOMY

• PROTECT OUR ENVIRONMENT

• BUILD MORE HOMES

VOTE 1

ELIJAH PUE

FOR **MAYOR**

ITS OUR TIME RUAPEHU

Authorised by Elijah Pue, info@elijahpue.com

Most mayoral candidates in Ruapehu back climate change spending

By Moana Ellis, Local Democracy Reporter
Almost all those standing to lead local government in the Whanganui, Rangitikei and Ruapehu districts think councils should spend ratepayer money on climate change action.

Mayoral candidates throughout New Zealand overwhelmingly want councils to take tangible action, the 2022 Local Democracy Reporting (LDR) survey of mayoral candidates has found.

LDR's 14 journalists across Aotearoa canvassed all 291 candidates for the country's 67 mayoralities to find out where they stand on key local government issues.

They were asked if councils should be investing in climate adaptation and mitigation initiatives – for example, better or more affordable public transport, collection of green waste to prevent it going into landfill, and moving their transport fleets toward being fully electric.

The overwhelming majority said yes (71.8 percent).

In Ruapehu, four candidates are vying for the mayoralty and both Māori candidates were fully



behind climate change action.

"That is a definite 200% yes," Fiona Kahukura Hadley-Chase said.

"All of us need to do our part to mitigate climate change. Council has a unique position to build a regional plan from the mountains to the sea, working with tangata whenua to ensure it's a continuous action plan and not another shelved paper plan."

Elijah Pue said it shouldn't be seen as "spending ratepayer money".

"It should be seen as an investment in our future. Climate change is real. Let's get real about the climate emergency and come up with

a plan."

Weston Kirton said most responsibility lies with regional and central government.

"However, we can do more to back local public transport. Bringing the district back into the national rail network should be a priority."

"We also need to prepare for the impact of more frequent severe rain and extreme weather events. But we are a large district with a small population and Government needs to shoulder some of the costs here."

Adie Doyle was the only candidate firmly against spending on climate change initiatives. The Ruapehu mayoral contender said of the 196 countries in the world, just 10 account for 75% of emissions, and three countries account for 50% of emissions.

"Council should utilise its limited resources in reducing pollution and waste to landfill. It should also invest in climate adaptation, not man-made climate change," Doyle said.

Public Interest Journalism funded through NZ On Air

New CE for power firm

King Country power firm The Lines Company (TLC) has appointed a new chief executive, Mike Fox, effective immediately.

Fox has been with the company for five years, holding the role of general manager, network and held the role of acting CE following the departure of Sean Horgan, from the electricity distribution business in June.

"We're thrilled to appoint Mike to role," says Bella Takiari-Brame, Board chair.

"He has a wealth of knowledge and experience across the sector and a thorough understanding of our customers and community and our network, and metering business."

Fox has worked in the electricity industry for 18 years, holding senior roles at TLC, and Mercury – with an extensive background in asset management, planning, engineering, and organisational strategy.

Fox said he was "excited to be appointed as CE" and that he looks forward to the challenge of continuing to ensure the needs of their customers and the community are met.

"Our community is what makes us unique. We've got some of the most demanding countryside in New Zealand to get electricity to, and our customers rely on us to do this safely, efficiently, and sustainably."

"TLC is focused on helping people connected to our network to thrive. We're doing so by creating capacity on our network to enable growth and decarbonisation, generating income from outside the region, creating jobs for local people, and ensuring our assets are fit for generations to come," says Fox.

Takiari-Brame confirmed Fox's appointment was made following a competitive recruitment process.



Mike Fox, TLC CE.



WPI and Ernslaw One are proud to give approximately \$20,000 each year to local community groups as part of our commitment to the area in which we work and live.

2022-2023

Sponsorship requests are now open!

Who can apply? Funding is available for local groups who provide a positive contribution to our community.

How do I apply?

Go to www.wpi-international.co.nz, click on the 'Links' tab, download a sponsorship application, complete the form, email the completed form (and any questions) to communitysponsorship@wpinz.com

How do WPI and Ernslaw One decide who will receive sponsorship and to what value?

We have three main focus areas:

- Education
- Health and well-being
- Environment

Successful applicants typically receive between \$50 and \$500.

Applications close: 19 October 2022

for the period to 30 June 2023. All applicants will be notified by 30 November 2022.

Community groups who benefited in the last year include:

Friends of Taihape Charitable Trust - Waimarino A&P Association
Raetihi Promotions Charitable Trust (Mangaeturoa Pool & the Wild Food Challenge)
Taihape Community Development Trust - Tuhariki Marae Horse Trek - Raetihi Primary School - Ohakune Kindergarten
Ohakune Playgroup - Waiouru Primary School - Kakatahi Primary School - Nancy Winter Early Childhood Centre
Taihape Jumping Group - Ruapehu Rugby and Sports Club - Ruapehu Junior Rugby - Waimarino Golf Club Inc
Turoa Alpine Ski Club Inc (TASCI) - Taihape Fitness Club Inc - Waimarino Shears
Waiouru Rugby Club - Taihape Gymnastics Club

Supporting our people, our whānau and our community.

What's on around Ruapehu

Winter Art Exhibition	4 - 25 September
Retro Day, Ohakune	1 October
Raetihi Christmas Parade	10 December

Ski, Board & Bike
Cnr Ayr St & Goldfinch St, Ohakune
06-385-8433, tcbskiandboard.co.nz



Please email: ads@rupahebulletin.co.nz or call 06 385 8532 or if you have something to add to this column.

Ruapehu mayoral hopefuls support Maori wards

By Moana Ellis, Local Democracy Reporter
Mayoral hopefuls in Ruapehu and Rangitikei are overwhelmingly in support of Māori wards, according to a new survey canvassing all 291 mayoral candidates in New Zealand.

In a first of its kind, Local Democracy Reporting's 14 journalists across Aotearoa canvassed the candidates for the country's 67 mayoralties to find out where they stand on key local government issues.

Just over half of councils (34) are introducing Māori wards in October, many for the first time. When asked if they were an effective way to increase Māori participation nearly half of the mayoral contenders (48.5%) said they were.

A quarter (26.2%) weren't sure and 25.2% rejected the proposition outright.

In Ruapehu, which is introducing three Māori ward seats this year, mayoral candidates Adie Doyle, Fiona Kahukura Hadley-Chase, Weston Kirton and Elijah Pue agreed that Māori wards would increase Māori participation.

"That is why I voted for them. They help fulfil council's obligations under Section 81 of the Local Government Act 2002, providing opportunities



for Māori to contribute to the decision-making process," Doyle told the 2022 Local Democracy Reporting mayoral candidate survey.

Kirton said Māori wards are a positive change for Māori representation at the council table. However, all councillors were there to represent the district as a whole.

"If we are to have Māori representation at council that is open, democratic and inclusive of all our iwi and hapū, then we need include the [Ruapehu District] Māori Council as a standing committee," Kirton said.

Pue, one of two sitting councillors who are Māori elected to general seats, told Local Democracy Reporting that Māori wards will increase Māori representation – "and enhance decision making by ensuring we consider Māori in decisions we make".

Hadley-Chase said the act of introducing Māori seats alone had increased Māori participation.

"It certainly has worked as more Māori have been nominated for council than ever before and I am certain Māori voters will do the same. Māori wards are only one way councils can give leverage to Māori participation, however – there is more work that needs to be done."

In the previous election, Māori candidates stood for Ruapehu, Rangitikei and Whanganui district councils. Two were elected in Ruapehu and three in Rangitikei. None of the multiple Māori candidates who stood in Whanganui were elected.

Bonita Bigham, chair of Te Maruata, LGNZ's national collective of Māori elected or appointed to local government, said the introduction of Māori wards had clearly empowered more Māori to stand.

"It's going to be a different sector. We will now have at least half of the councils across the country with Māori wards. It will be a different place, but the sector is ready for that."

"The conversations have been changing, the attitudes have been changing. Of course, there are those who still find this whole process challenging and frightening but generally we've got a lot of great friends and lobbyists and tangata tiriti who

see this as the best way forward for the motu and we're excited to have all these Māori members coming in."

Bigham said Māori elected to the council table were not there to replace direct relationships between iwi, hapū and councils, now a requirement under many Treaty Settlements.

"We're really clear as Māori elected members in the sector that we're not there to speak for iwi, we're not there to speak for hapū. We are there to provide a Te Ao Māori perspective and our lived experience of being Māori in our communities."

"But for our Māori-appointed members who sit on things like council committees, our iwi appointees, that's their space."

"We're just excited about the increased numbers, the increased potential for better governance decisions to be made because of that increased Māori perspective at the table."

The survey was sent out to all 291 mayoral candidates and garnered 202 responses, representing a 69 percent response rate.

Local Democracy Reporting is Public Interest Journalism funded through NZ On Air



Adie Doyle



Fiona Kahukura Hadley-Chase



Weston Kirton



Elijah Pue



National Park 11a MacKenzie Street

Magic in the Park

A central town location, low-maintenance dwelling, views of Mount Ruapehu, and a separate gym are all reasons to smile about this cosy home in National Park. Set on a flat 556 sqm (more or less) section the site is easily maintained with no lawns to mow so you can enjoy every minute at this property.

This very tidy contemporary three-bedroom home has both a heat pump and gas burner in the semi-open plan living area to create warmth and ambiance. Set back from the road, down a shared driveway the property is kept private for your quiet holiday living.

bayleys.co.nz/2900537

556sqm 3 1 1

Asking Price \$539,000
Olivia Stewart 021 148 6044
olivia.stewart@bayleys.co.nz
BARTLEY REAL ESTATE LTD, BAYLEYS, LICENSED REAA 2008

Raetihi 50 Ward Street

Potential lives here

This three-bedroom 1920s weatherboard home is well located within close proximity to the local shops, cafes, and Raetihi Primary School. Set on a fully fenced, 936sqm (more or less) site with a large shed, the potential is here to add your own touches creating the ideal opportunity for a family home, rental property, or first home.

An open plan kitchen and large dining area are heated with a wood burner, gas heating and an HRV system provides warmth to the rest of the house.

bayleys.co.nz/2900531

936sqm 3 1 1

Asking Price \$350,000
Jenny Dekker 027 455 5674
jenny.dekker@bayleys.co.nz
BARTLEY REAL ESTATE LTD, BAYLEYS, LICENSED REAA 2008

What state Ruapehu? CEO reports to voters

Ruapehu District Council chief executive Clive Manley writes about the state of the District, in the council's Pre-Election Report.

• While the local government sector is undergoing a period of significant change we believe that the future role of Council in supporting the wellbeing of our communities will be more critical and more valued than ever.

Ruapehu District Council is responsible for delivering a wide range of services that our communities and visitors to the district are reliant on.

The local roads they drive on, the water they drink, cook and wash with, sewage and storm water systems, rubbish and recycling services, libraries, public buildings and swimming pools, parks and reserves, local regulations, community and economic development, and town planning are all provided by Council.

In the coming financial year we will spend \$44.9m keeping these services going, and an additional \$33.7m on providing and improving the District's key assets, funded by \$58.4m in revenue notably from rates and Government subsidies and grants.

We are responsible for a complex business directly employing 91 staff supported by specialist partner organisations such as Veolia for water services, GHD and Inframax for land transport, Recreational Services for parks and reserves and Envirowaste for solid waste services amongst others.

Despite this, we are a relatively small rural council with a small rating base, and as such face increasing affordability challenges as we work to accommodate growing community aspirations and maintain and upgrade key infrastructure.

Work programme stressed

General inflation growth, rising interest rates and debt servicing, increasing construction and depreciation costs, meeting three waters standards with uncertain funding support and skill shortages are stressing our work program and ability to keep rates in check.

To date we have been able to keep rates down by keeping costs under tight control, managing debt servicing and depreciation costs by careful scheduling of major capital projects, and taking full advantage of any Government funding opportunities.

Government funding assistance for Council's three waters and land transport has been key to our ability to maintain our work programmes in these areas and limit the financial impact on ratepayers.

In land transport Government pays 75% of the costs for most maintenance and renewal work while in three waters we are dependent on support from various Government funds by project.

In the past 2021/2022 year for example Council's

\$15.3m water infrastructure spend (our largest yearly investment to date) was supported by \$5.6m in COVID recovery funding.

The end of this funding however has required Council to borrow to maintain our three waters work programme and with it our debt is forecast to balloon to \$52.9m which is uncomfortably close to Council's set limit on debt affordability of \$53.1m.

Under the three waters reform proposals new multi-regional water entities take-over delivery of all council water services from 1 July 2024. Any three waters debt will transfer to the new entity at this time.

Unaffordable

While some on Council disagree with the Government model, all are agreed that our small ratepayer base cannot afford the investment required to meet the new water standards on our own.

It has been estimated that Ruapehu needs upwards of \$600m in three waters investment and that without reform, households would be facing water charges rising to around \$10,000 per annum (in today's dollars) over the next 30-40 years.

The new Water Services Regulator (Taumata Arowai) has made it clear that councils must meet the new water standards while Government has stated their intention to proceed with the reform proposals.

Whatever the final model that is adopted Council's involvement in three waters services delivery will have changed raising the critical question of our future role.

Government has provided a \$2.5b fund to support councils through the transition and position the sector for the future. Of this \$2b is available to invest in the future of local government and community wellbeing while the remaining \$500m is available to ensure no council is worse off as a direct result of the reform.

Challenges

Ruapehu has been allocated \$16.4m from the \$2 billion 'better off' component and one of Council's key challenges is to decide with our local iwi and communities how to spend this money. The projects Council chooses will help determine our future role and value to our communities.

Despite the focus on three waters, Council's largest area of expenditure continues to be on land transport with \$16.8m budgeted for capital works in the coming year and another \$16.5m on operational spending.

Changing funding priorities within Waka Kotahi NZTA are presenting challenges in maintaining our levels of service on our road network and we have needed to adapt accordingly working with less funding in some areas and more in others.

Revitalisation

Ruapehu townships are continuing to be supportive of



Ruapehu CEO Clive Manley.

the township revitalisation journey and want to see tangible signs of progress along with the opportunities and associated business investment that comes with it.

The speed and direction of township revitalisation projects is being determined by each individual township and Council has budgeted almost \$11m over the first five years of the current 2021/31 Long Term Plan period to support community aspirations.

This is in anticipation of the first project

of the Future Ohakune Plan, phase 3 of Taumarunui revitalisation, the Raetihi Hub and National Park Village Plan.

We have also increased Pride of Place Funding from \$500,000 to \$1m over the ten years of the Long Term Plan.

Housing

Housing is an important issue for our community and is a challenge the new Council will need to consider.

Council is working hard to establish

Turn to Page 12



Experts ~ at your service

Spouting & Fascia



- Re-Spouts
- New Builds
- Colorsteel Fascia & Downpipes
- Continuous Spouting

Call Aaron Kairimu
for a free no obligation quote
longrunspouting@outlook.co.nz

Ph 027 363 8545

Landscaping



Certified Horticulturists (Hort.Cert.NZ)

KRISTIN 022 350 9220 VICKI 021 606 743

facebook.com/naturescapersnz

naturescapersnz@gmail.com

Plumbing / Drainlaying



THE PLUMBERS THAT MAKE IT HAPPEN

Bathroom / Kitchen Renovations
New Builds Woodburning Fires
Central Heating Systems
Domestic & Commercial Plumbing Maintenance

"Your comfortable living experts"
www.matthobbsplumbing.co.nz

06 3881400 / 021 0263 4206

Plasterer

Trevor Scott Plastering



Gib fixing

Plastering

Painting

Vacuum sanding

Free Quotes

trevskihard@gmail.com

Ph 0272 412 928

Carpet Cleaning



WANGANUI

CARPET & UPHOLSTERY CLEANING
24 HOUR FLOOD CALLOUT

We specialise in stains, odours and hard to clean carpets and fabrics.

P.U.R.T - Pet Urine Removal Treatment
cdwanganui@outlook.co.nz

www.chemdry.co.nz

Wanganui & Ruapehu Regions

0800 22 78 22

Mortgage & Insurance Adviser

Jason Salle
Millenium Insurance
Group

Mortgages

- First home buyers
- Investment property
- Fixed rate expiries

Insurance

- Life insurance
- Trauma insurance
- Income protection
- Health insurance

jason.salle@xtra.co.nz
Taumarunui

Ph 027 201 3203

Land development

VERSATILE BOBCATS LTD



Bobcat+Truck Hire
Section clearing
Driveways Formed

For All Your Land Development Requirements

Contact Steve Gray **Free Quotes**
PH: 0276 854 854 / 06 3854 854

Ph 06-385-4854

Property Management

Shelley Oliver
Property Manager



Your Local
Property Managers

Your Property Management Specialists

Only 8.5% + GST

Commission on rentals **m. 027 903 5566**

All inclusive **p. 0800 114 978**

No other fees **e. shelley@ylpm.co.nz**

w. www.ylpm.co.nz

Ph 027 903 5566

Auto Service



RUAPEHU TOYOTA

- WoF – cars \$68, trailers \$45 all makes & models
- Qualified mechanics
- Tyres – cars, motorbikes, ATVs, side-by-side
- Batteries

You might have seen the for sale sign on our site, yes the building is for sale but Ruapehu Motors is not and we are here to stay

Cnr Seddon St & Valley Rd, Raetihi
wanganuitoyota.co.nz
Right here in Raetihi

Ph 06-385 4216

Hire

Why buy it ... hire it! TWEEDDALE HIRE

CHECK OUT OUR EXTENSIVE
RANGE OF HIRE EQUIPMENT.
SEE OUR WEBSITE
WWW.TWEEDDALE.CO.NZ



PARTY HIRE: floodlights, tables & chairs, heaters, spit roasters, wheelie bins, chafing dishes, crockery & cutlery, dehumidifier, flute & wine glasses, universal food cooker, portaloos & showers, 3-section marquee, horse float.



Marquee Hire

FOR THE BIG JOBS: digger hire, cherry pickers, pumps, wood splitters, generators, car trailers, post hole borers, furniture trailer, concrete equipment, rollers & compactors, portable trencher



Ph 06 387 5022

Engineering



- Manufacturing and repairs
- Access equipment hire
- Engineering supplies
- BOC gases
- 20T & 50T crane hire

29 Burns St, Ohakune.
027 473 0188 Mark or 027 444 2058 Bruce
Email: sales@ohakune-eng.co.nz

Ph 06 385 8952

Furnishers



Quality furniture
flooring and
window treatments
for the discerning

Geoff Anderson 33 Victoria Avenue, Wanganui
027 283 9551 email wangafurn@xtra.co.nz

Ph 06 345 4554

Plumbing / Drainlaying

B&M PLUMBING LTD

- Plumbing & Drainlaying
- Pumps - sales, servicing & installation of all pumps
- Fires & Solar
- 5 Ton Digger with Augers, Ditchwitch & Tip Truck

"Your local Registered Certifier"



Call Brian 027 436 1075

Email: bmfred@xtra.co.nz



Ph 06 385 4718

Upholsterers



- Furniture Upholstery
- Vehicle Upholstery
- Tarpaulins • Canvas & Leather
- Shade sails • Saddlery

Factory, SH49, Tangiwai, Ohakune.
Mobile 0274-467-289 Fax 06-385-8483
email: westlorne@xtra.co.nz
www.westlorne.co.nz

Ph 06 385 8487

Appliances

**Choose the best
heat pump designed
to heat your home**



Free quotes. Total 5-year Warranty.

Your Local 100% Independent Store
& Heat Pump Installers

Ohakune TV Electrical

Ph 06 385 8700

Septic Tank Work

Bennett's Septic Tank Cleaning Services

Septic tanks, water tanks,
grease traps.

Call us for fast efficient service.

**Phone Chris on
06-388-0452**

Ph 06 388 0452

Heat Pumps

Call our Refrigeration
Engineers for a
FREE Heat Pump quote

- Interest free terms
- Professional Accredited Installer
- 6 year warranty

0800 10 70 90



Ph 07 895 7348

Local Carpenter/Renovator

- Interior & Exterior house painting
- Timber repairs
- Fence & Deck building
- Garden design & landscaping
- Kitchen & Bathroom refits

Call Luke for a free quote

Ph 022 414 5303

Motor Vehicle Sales



Go Further



mazda

Award Winning Models



Call Dave anytime...
027 485 7693

davescott@xtra.co.nz
I come to see you from
my home office

Wanganui Motors | Ford | Mazda

Ph 027 485 7693

Machinery Hire

OHAKUNE MACHINERY

HIRE & TRANSPORT LIMITED

DRY HIRE

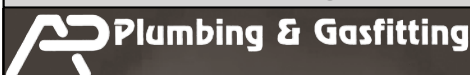
12t digger – \$50 + GST per hour
20t digger – \$60 + GST per hour
CAT D8R dozer, root rake & pipe layer

- Full contracting available
- Heavy haulage
- Attachment hire

Contact Cam

Ph 027 586 1015

Gas Fitting



Cut down on your power bill.

Go gas hot water & heating

– supplied and installed.

Call for a consultation.

Phone Denise 027 482 7488 or

Email

accounts@applumbingandgas.co.nz

Ph 06 343 6866



**www.
ohakune.info**

Ohakune... your mountain town

For everything Ohakune

Contact us ads@ruapehubulletin.co.nz
or 06 385 8532

Auto Services

**AUTO
SERVICE
CENTRE**



Authorised Holden Service Centre

Full workshop services for all
vehicles, wheel alignments,
computer diagnostics,
warrant of fitness inspections,
parts, batteries, engine oils.

84 Clyde Street, Ohakune
After hours 027 448 4080
autoservicecentre@hotmail.co.nz

Ph 06 385 9222

Lawyers

YOUR DIGITAL LAWYERS



WE CAN MEET WITH YOU VIA VIDEO CONFERENCE
FROM YOUR SMARTPHONE, TABLET OR COMPUTER

www.dewhirstlaw.co.nz

Ph 06 281 3461

Electrician

Are you looking for an electrician who:

- Turns up on time?
- Keeps his promises?
- Offers efficient service & sound advice?

Then call Jake Fah at



REGISTERED ELECTRICIAN

Ohakune - Raetihi - Rangataua -
Horopito - National Park
PH. 06 385 3393

Ph 021 770 123

Insulation

**INSULATION
SUBSIDIES
AVAILABLE***

*Terms and conditions apply



0800 327 946
www.easyinsulation.co.nz

Heating and Ventilation

0800 327 946

Building Supplies

PlaceMakers

OHAKUNE DEPOT

**FOR YOUR BUILDING
PROJECT & DIY NEEDS**

MON to FRI – 7.30am – 5pm | SAT 9am – midday

7 BURNS ST, OHAKUNE

Ph 06-385 8414

BUSINESS NOTICES

GARAGE DOORS, all types of garage doors, specialising in sectional garage doors and auto openers. For a free quote ring Alex Ferrier Building Services Ltd on 07-895-5890.

LAWNMOWING AND SECTION maintenance – Phone Alpine Property Services 0800-896-689 or 027-353-5189 email: info@alpinelawns.co.nz.

FOR SALE

FIREWOOD LOGS for sale: pine, gum and wattle logs. 5 or 10 ton truck loads. Free delivery in the Waimarino. Call/text Keith for prices. 021 055 4794

FORESTRY SEEDLINGS, Management Services. Grow your Carbon Now. Local Expertise available. Waimarino Tree Resource. Ian 027 444 3441

WATER TROUGHS, cattle or sheep. Different sizes. Delivered price quoted. Ph 0800-487-633.

RAFFLE RESULTS

SPRING BULB SHOW RAFFLE RESULTS: Gourmet groceries #72 Mike Hiscox, Garden raffle 1 #37 Janelle Hinch, Garden raffle 2 #40 Josie Hislop, Plant raffle #100 Colin Bingham. We would like to thank the following sponsors for their generous donations for our spring show: PGG Wrightson, Ohakune, Hautapu Rural Supplies, Taihape, Peggy Frew, Opus Fresh, HQ Coffee Taihape, Home Ohakune, Wild Food Collective Raetihi. Thanks to all involved.

WANTED TO BUY

OLD POTATO PLANTER. 2-row potato moulder wanted. Phone 020 402 46815.

BUSINESS NOTICES

Insulation Subsidies

Call Easy Insulation
0800 327 946

ONROPE ARBORISTS

TREWORK – Ron 022 195 4799
onrope@gmail.com

- Precision tree felling
- Topping / pruning / limbing
- Dangerous Tree Removal
- Fully insured
- Based locally

FIREWOOD – Dan 0275 758 377

LIVESTOCK FOR SALE



LIVESTOCK FOR SALE

Jersey JerseyX Bulls 450kg \$2250
R2 Bulls \$1950
CharolaisX Bulls \$2400
FRSN HFD 15MTH Heifers 300kg

LIVESTOCK REQUIRED

Beef Steers & Heifers 400-450kg

GRANT HALL

P: 027 596 7181 E: grant@dyerlivestock.co.nz
www.dyerlivestock.co.nz

TENDERS

ABANDONED LAND SALES

The Ruapehu District Council is offering for sale the following properties located at the addresses listed as follows.

Property Address	Reference/ Assessment No.
195 Miro St, Manunui, Taumarunui	06028 286 00
9 Huia Street, Ohura	06200 110 03
6 Ngarimu Street, Ohura	06200 110 01
8 Ngarimu Street, Ohura	06200 110 02

Tender documents are available from Council's website at www.ruapehudc.govt.nz from **Friday 16 September 2022** and are required to be submitted to the offices of Ferguson Bhullar & Scott, being at 45 Miriama Street, Taumarunui 3920 (P O Box 26) Taumarunui 3946 by **4.00pm on Friday 11th November 2022**.

Faxed and emailed tenders and associated residential land statement will be accepted before the closing time and deposits **MUST BE RECEIVED** before the closing date.

No late tenders will be accepted.

LICENCE TO OCCUPY

Tender offers are requested for a Grazing Licence to Occupy Kakahi Domain (Ako Street) being approximately 8.99 Hectares, Section 12 91 Block VI Hunua SD – Rec Res-Gazette 85/1582, for five years from 1 Nov 2022 to 31 October 2027

The Ruapehu District Council wishes to issue a Licence to Occupy this land for grazing purposes, pursuant to Section 11 of the Local Government Act 2002.

The highest price tender or any tender will not necessarily be accepted. All enquiries, or for an information pack contact Carole Colquhoun, Community Facilities Assets Officer, Ruapehu District Council, Private Bag 1001, Taumarunui 3946.

Tenders must be received at the Tenders Box, Ruapehu District Council, Huia Street, Taumarunui at **4.00 pm on Wednesday 30 October 2022**.

PUBLIC NOTICES



WLSNT AGM 2022

Whanganui Land Settlement Negotiation Trust

Friday, 30 September 2022 11am at Rangahaua Marae and by Zoom webinar

AGENDA:

- Attendance & Apologies
- Previous Minutes
- Annual Report
- Financial Report
- Appointment of Auditor
- Reconfirm Trustees
- General Business

NB: This is a non-electoral annual general meeting.

Check out Whanganui Lands on Facebook for more info.

TIORANGI MARAE 2022 Hui a Tau

Saturday 15th October 10am
via Zoom

AGENDA

1. Chair's Report
2. Previous AGM Minutes dated 13 November 2021
3. Annual Financial Statement Year Ending 31st March 2022
4. Progress Report
5. Re-Election of 2 trustees who are available to stand again Hikoi Te Riaki and Goldie Akapita
6. Election of 2 Tirorangi Representatives for Te Kahui O Paerangi, Ngati Rangi Runanga
7. Adopt Marae Charter – Final Draft
8. General Business ...

Meeting papers and Nominations forms for Trustee and Runanga elections can be obtained by email to the Secretary Deborah Te Riaki email: murimotu.karioi@gmail.com

Nominations close Monday 10 October 5pm
AGM Zoom Link

<https://us02web.zoom.us/j/89522376092?pwd=dZFJuOFo4R1ZlZU1WTEFKTTdGaTJ0Zz09>

Deadline for all advertising bookings and copy is

5pm Fridays!

It's important that we get your ad booking and copy in on time, so that we have time to check it, plan the best layout and work on producing a better paper for you!

SITUATIONS VACANT



ROADSIDE MOWER OPERATORS and PILOT DRIVERS REQUIRED OPPORTUNITY GENEROUS PAY RATES

Combined Road & Traffic Services Ltd has positions available for Mower Operators, Pilot Drivers and qualified STMS roles.

Full time positions are available for our roadside mowing operation that works across the Central Waikato region, these roles would suit candidates based in Taupo area. We operate four-wheel drive fully enclosed cabin tractors; Mowing is carried out with the use of rear mounted Flat mowers and "reach" mowers (arm mounted mowers). Pilot vehicles are required to accompany the mowing operation.

Ideal candidate would need:

- Experienced operating Tractors or Pilot vehicles
- At least 1-2 years' experience in a similar role is beneficial
- Full drivers' licence
- STMS or TC qualifications are preferred
- Looking for long term work
- Working as part of a team

We offer:

- Generous base pay rates, negotiable depending on your experience and qualifications
- Training and up skilling for position
- Great work conditions and Team support

About You:

You need to be able to self-manage your work programme, be positive and very reliable.

These positions require you to hold a current NZ Driver Licence.

Applicants for this position should have NZ residency or a valid NZ work visa.

Register your interest now
jenny@crts.co.nz

PUBLIC NOTICES

MURIMOTU 4B4 LOT 2 TRUST 2022 Hui a Tau

Saturday 15th October at 2pm
via zoom

AGENDA

1. Chairs Report
2. Previous minutes dated 13 November 2021
3. YE 31 March 2022 Financial Statement
4. Progress Report
5. Election of 1 Additional Trustee
Re-election of 2 Trustees who are available to stand again Hikoi Te Riaki and Goldie Akapita
6. Adopt Trust Order and Policies
7. General Business

Meeting papers and nomination forms for Trustee elections can be obtained by email to the Secretary murimotu.karioi@gmail.com

The closing date for Nominations is Monday 10 October 5pm.

Zoom Link

<https://us02web.zoom.us/j/83705135154?pwd=bStudTdoem12aUZDcTlMZNfObWpXZz09>

For everything Ohakune ...
www.ohakune.info

Dog rules locked in for three years

By MarkEbrey

While Ruapehu District Council has changed its cats rules in the Ruapehu Bylaw, dog owners have always been required to register their dogs – and the council's dog policy has just been reviewed and reconfirmed by the council for the next three years.

In considering the policy at last week's council meeting, RDC said it seeks to set high expectations of dog owners, so that people can enjoy the benefits of dog ownership while at the same time minimise negative impacts on other members of the community.

The obligations of dog owners are:

- (a) To ensure that the dog is registered and microchipped, as required by The Act.
- (b) To keep the dog under control at all times.
- (c) To supply the dog with proper care and attention and have sufficient food, water and shelter.
- (d) To ensure that the dog has adequate and regular exercise.
- (e) To ensure that the dog does not cause a nuisance to any other person, whether by persistent and loud barking or howling or by any other means.
- (f) To ensure that the dog does not injure, endanger, or cause distress to any person, stock, poultry, domestic animal or protected wildlife.
- (g) To take all reasonable steps to ensure the dog does not damage or endanger any property belonging to any person.

(h) To comply with the requirements of the Act and all regulations and bylaws of Council.

The owner must advise Council:

- (a) If the dog dies.
 - (b) If ownership of the dog changes.
 - (c) If the address at which the dog is kept changes.
 - (d) If the owner has a change of address
- Responsible Owner Classification
- "Responsible Owner" is a classification assigned to a dog owner who meets the following criteria:
- (a) registers all their dogs by the due date, and
 - (b) has no history of complaints or impounding over the past 12 months, and
 - (c) keeps their dog(s) under control at all times, and
 - (d) is compliant with the Act and Ruapehu Bylaw.

To be eligible for the Responsible Owner classification, an owner must make an application to Council by March 31 for the registration year commencing on July 1.

Once Council has received the application, a compliance officer will inspect the property where the dog resides.

Responsible Owners are entitled to a reduction in dog registration fees.

Failure to comply with conditions may result in the Responsible Owner losing their classification for a minimum of two registration years.

Waimarino Waiohuru Community Board candidates

Seven people are standing for election to the Waimarino Waiohuru Community Board. Five places on the Board are being contested. The Bulletin has invited candidates to submit a brief profile.

Jayde Lowe

After falling in love with Ohakune while working on the maunga for my final semester of university in 2015, I have called this beautiful place my home ever since.

As a working mother of a young boy, I am connected and engaged in many different parts of the community.

Over my years here I have also been involved in giving back and being connected to the community through various volunteering and charity work, including The Ohakune Events Charitable Trust.

While I have close ties to hospitality and tourism within our rohe, I am also committed to working to support the agricultural sector.

I am passionate about supporting and encouraging the continued growth



Jayde Lowe

and vibrancy of our local community. My priorities:

To achieve this are to support and promote more cultural, sporting and community events in our towns.

To encourage and support initiatives that grow employment opportunities for our rangatahi and community.

To advocate for and support community hubs in creating safe spaces and programmes for our ranga-

tahi to enjoy and do.

To ensure council decisions reflect what we want the future of our rohe to look like.

It would be my honour to serve on the Waimarino-Waiohuru Community Board; to engage and to listen, to advocate and support where needed. This is the place my family and I call home and the community I would be proud to represent.

SITUATIONS VACANT



WPI
forestry timber pulp

Labourer's Wanted!

Located 15 minutes from Ohakune, WPI are seeking multiple labourers/ general hands at Tangiwai Sawmill.

- Flexible employment terms
- 2-4 days mid-week, you choose!
- Full on job training provided
- Transport available from Raetihi, Ohakune & Taihape
- Must pass a pre-employment drug test.

Contact Courtney on 021 937 640 or email jobs@wpinz.com

Get your vote in!

VOTE
2022
LOCAL ELECTIONS

Vote before midday Saturday 8 October

If you are registered to vote you should have received your voting papers in the mail by now. **Voting papers need to be completed and returned before midday on election day Saturday 8 October.**

Don't have voting papers

Come into your nearest Council office and make a Special Vote.

Note: Before you come in to make a Special Vote please enrol or update your details at: www.vote.nz or use the QR code and phone to go direct.



Single Transferable Vote (STV)

Voting by either STV or FPP is equally simple.

Voting for Ruapehu District Council and the Community Boards is by Single Transferable Voting (STV).

With STV which is being used for the Mayor, Councilors and Community Board members, you rank the candidates you want to vote for in order of preference by putting a 1 by your first choice candidate, a 2 by your second choice and so on. You can vote for as many, or as few candidates as you like, however if you do not want to see someone elected leave the space by their name blank.

Get your voting papers in on time!

When you have voted you can freepost your voting papers back or drop them into one of the voting paper bins located around the District. If you are posting your voting papers back please do so as early as possible to ensure they are received in time for the count.

First Past the Post (FPP)

Voting for Horizons Regional Council is by First Past the Post (FPP).

For the FPP system, which Horizons is using, you simply put a tick alongside the candidate you wish to vote for.

Info on candidates and the election

If you want more info on what the candidates are standing for or on the election process please see Council's website: www.ruapehudc.govt.nz

Candidate profiles & election information



Voting paper collection bins are at:

- Council offices in Taumarunui, Ohakune and Raetihi (the Raetihi office has been temporarily closed due to a flood event and was expected to reopen this week)
- Unichem Taumarunui
- New World Taumarunui
- Unichem Taumarunui
- Kakahi General Store
- National Park Service Station
- Raetihi Information Centre
- Raetihi Cosmopolitan Club
- Ohura Cosmopolitan Club
- Matiere Cosmopolitan Club



Ohakune squash team second in nationals

Last week had three Ohakune teams travel away to graded team national finals, having earned the right earlier in the season by winning their respective district qualifiers.

Best result came from the F grade men's team competing in Ashburton.

They were ranked 4th and had a tough first round battle against 2nd seeds Royal Oak, coming out on top 3 matches to 2. Second round they faced a very strong Te Puke side but they couldn't quite seal the win and went down 3 matches to 2. Round 3 was against top seeds Surf City but the boys put on an incredible performance and showed everyone why they deserved to be there beating the top seed 3-2. Finally they faced 3rd seeds Christchurch where they put on a dominating performance and won 5-0.

At the end of the competition there was a 3 way tie for 1st place between Ohakune, Surf City and Te Puke, unfortunately after an extremely close countback the Ohakune team missed out by one point and came out in second place.

Impressive

This is an extremely impressive outcome with the team claiming the runner up banner and earning the title for second best F/J grade men's team in the country. Congratulations to the players Archie Mills, Matthew Smith, Shaun Bidois, Reign Marumaru, Danny Mochan, Hone Buckingham, Zai-Yarn Tuipea and to their coach Matthew Laurensen. They wished to thank everyone who showed their support and made the trip possible. Special thanks to PubCharities and Central Squash for helping with the expenses, Iwi Athletica for the team uniforms and Darryl O'Hara for the team hoodies.

Another mountain

From one beautiful mountain to another, the D grade ladies ventured over to New Plymouth for their Superchamps journey. Round one kicked off on Wednesday evening where they played a strong team from Henderson and managed to get a 3/2 win.

Thursday morning they followed it up with a convincing 5/0 win over Pirates (Dunedin). That evening, they had another tough game against the home team KP.

After 4 matches it was 2/2 coming down to the last match of the night, which resulted in Ohakune coming out victors, finishing top of their pool and seeing them into the semi-finals against Putaruru on Friday. They got off to a great start winning the first two matches but couldn't get the last, missing the championship finals.

Saturday they played off for 3rd & 4th place against the home team KP (again) which they won 4/1 giving the D grade ladies a 3rd place finish overall. Team players were Jade Kendrick, Laura Double, Emma Haitana, Kristin Thompson, Paige Bentley and Holly Deadman

Improved

The B Grade Ladies team travelled to Tawa, going into the tournament near the bottom at 7th seed, and were pleased to improve their seeding finishing with a 6th placing out of 11 Districts. This was a great effort with a full local team of, in playing order, Emma Rowe, Tina Steedman, Jackie Douglas, Lauren Wikohika, Grace Burnard and Shey MacLean. It was noted that several of the other teams had sourced players from other local clubs to combine and make a stronger team. The ladies thank Pub Charities, as well as Ohakune and Central Squash for the sponsorship of Accommodation and Travel for the tournament.

The 1st round was a 5-0 loss against the eventual overall winners Tawa. In the next round they were able to secure an upset win 3-2 against the 3rd seed Morrinsville ladies. In the 3rd round later in the afternoon they lost 4-1 to Christchurch. They secured another good team win 3-2 against the Oamaru ladies, and then finished off with a 4-1 loss against the strong Thorndon team.

This week a new round of interhouse starts with six teams. Draw for this Thursday is at 5:00pm team one plays team two, At 6:30pm team three plays team four and at 8:00pm team five plays team six. Team two is looking after the kitchen from 5pm and team five takes over at 7pm. Team captains will be in touch with who is in their team and start times.

Entries are starting to flow in for Ohakune's Ossie Open tournament scheduled for the 14-16 October. About 50 entries have been made on line so far.



Ohakune's successful F-Grade mens team, from left, Reign Marumaru, Matthew Smith, Archie Mills, Danny Mochan, Shaun Bidois, Zai-Yarn Tuipea Hone Buckingham.



Ohakune's D-Grade team, from left, Jade Kendrick, Holly Deadman, Emma Haitana, Paige Bentley, Laura Double, Kristin Thompson.

What state Ruapehu? CEO reports to voters

From Page 8

fair and equal working relationships with iwi and hapū in our rohe along with other other Māori stakeholder interests such as Ngā Tangata Tiaki o Whanganui (Whanganui River iwi).

There is a desire to participate in management of their rohe in diverse ways including as partners, facilitators, investors, advisors and outright managers.

We are committed to ensuring Māori ability to contribute to Council decision-making processes as per Local Government Act requirements, while allowing Council to meet its statutory obligations, and ensuring equal levels of service to all Ruapehu communities.

The Representation Review for the upcoming elections has established more opportunities than ever for people to represent the diversity of our amazing district and help shape our future.

Council will now comprise a Mayor with six General Ward and three Māori Ward councillors while we now have three Community Boards covering Waimarino- Waiouru, Ōwhango-National Park and Taumarunui- Ohura.

New responsibilities for the Community Boards will see them lead advocacy and place-making discussions with their communities.

Climate change

Ruapehu is facing the impacts of climate change which is delivering a combination of threats and

opportunities to our key economic activities and way of life.

The trends we are seeing include increasingly frequent and extreme weather events such as weather bombs and higher prolonged temperatures with; lower river flows and ground water, increased risk of drought and fire, fewer frosts and snowfall but with possible extreme events, risks to biodiversity including new pests and weeds and greater mental health issues.

These trends are challenging our levels of service in requiring such things as larger culverts (and associated costs) to cope with more extreme flooding.

While we are working to adapt we believe one

of the best ways to assist our communities adapt is by doing all we can to develop community resilience by helping build a strong, viable, diversified economic base together with strong social connections.

Council's vision is to drive and support the development of safe, prosperous rural communities that are able to thrive and capitalise on our agriculture, business and tourism sectors while sustaining our beautiful environment.

Whatever may be considered 'traditional' core council services, Ruapehu communities are clear that they want their council to play a broad role in promoting their social, economic, environmental and cultural wellbeing.

stronger together...



NZR Central have recently broken the tradition of real estate in the area by deciding to join as a team.

The philosophy behind this is that by sharing all listings and commissions equally and working collaboratively, every NZR customer and client has the benefit of knowing that they have the entire sales team working as one on their behalf to ensure a positive and successful outcome is achieved.

Combining our individual experience, knowledge and skill set as well as true open communication between each member of the team, gives us that extra edge over other agencies and gives our clients and customers the certainty that nothing else stands in our way of ensuring they are provided with the best experience that they deserve.

With already proven sales success we pride ourselves on our honesty and integrity which is evidenced by the testimonials received.

We would love for you to join us and see what we can all achieve together!

Polly Ingles 027 315 8368 polly@nzs.nz	Kath Campbell 027 333 4381 kath@nzs.nz	Jenna Hovelle 027 361 0167 jenna@nzs.nz
---	---	--

