

HORNE

BROS

Registered

mb

Builder Joiners Glaziers

• Building/Alterations

• Glass

• Joinery

• Kitchens

• Design Work

• Concrete Cutting

• Automotive Glass

Old Station Road, Ohakune. Phone 06-385-8444



New lead for local iwi

P2



Ruapehu soldier hero honoured

P3



Making the most of the snow

P7



Rare rugby feat for Gabriel

P12

Biggest heritage train rumbles through

The largest New Zealand heritage train in 36 years visited the Ruapehu District on 6 August – a joint excursion run by Glenbrook Vintage Rail and Steam Incorporated, with help from Ohakune’s MTRO.

The excursion, dubbed Mountain Thunder, ran from Palmerston North to the Raurimu Spiral, taking in numerous railways scenic spots. GVR had run a train from Auckland down to Palmerston North, to then hook up with the Steam Incorporated wagons, making up the Mountain Thunder train.

GVR’s DBR, and Steam Incorporated’s two DA locos, hauled the 20-carriage train (not seen in 36 years) to Raurimu and return.

“Some 800 passengers shared in this rare and amazing adventure and thoroughly enjoyed their day,” says GVR.

The train was 380m long and nearly 600 tonnes.



A 20-carriage heritage train winds its way north, under the shadows of Mt Ngauruhoe and Mt Ruapehu. Photo: TNZ Studios. More photos and video of the trip are on the TNZ Studios Facebook page.

All Ruapehu posts to be contested

Last-minute rush of nominations for local council

Despite a slow start a last-minute rush of nominations means there are enough candidates for a contested election for every seat on Ruapehu’s District Council and local Community Boards.

There are four candidates for mayor, 12 for six general ward councillor seats, six for three Māori Ward seats, nine for five Taumarunui-Ohura Community Board seats, seven for five Waimarino-Waiouru Community Board seats and six for five Ōwhango-National Park Community Board seats.

Current mayor Don Cameron, who is standing down after three terms, said it was fantastic to see so many people putting their hand up to help lead Ruapehu’s communities forward at this pivotal time in local government.

“I wish everyone who has thrown their hat

in the ring the best of luck and look forward to hearing what they have to say over the campaign period,” said.

“Everyone who has made the decision to stand for council or a community board deserves our respect and support.

“The successful candidates are going to need to deal with, and make decisions, on a raft of challenging issues important to our future and way of life.

“They can be assured, however, that they will be well supported by a very capable and experienced chief executive, senior management team and hardworking staff.”

Mr Cameron noted that with the amount of change and pressure on councils and their communities at the current time it is probably not surprising that many local authorities have struggled to get enough people to stand.

“The fact that we have had such a strong turnout is in large part a credit to the work of the current Council and Community Boards and Council staff who have done an amazing job over the past term.

“These are incredibly important jobs that don’t get the recognition or reward that they deserve.

“It is now up to the rest of us to support everyone standing by voting.”

Voting papers will be sent out from 16 September and received back by 12 noon on 8 October.

Voters can post voting papers back or drop into a voting box at your local Council office or other locations around the district.

Anyone who hasn’t received an enrolment confirmation pack should call 0800 36 76 56.

Mayoral candidates

Of the four mayoral candidates, two are current councillors who are not standing for council as well as mayor, meaning that at least one of them will

be off the council table after the election. They are Adie Doyle and Elijah Pue.

They are challenged by Fiona Kahukura Hadley-Chase and Weston Kirton, with the latter having served as Ruapehu mayor in the past.

Ruapehu General Ward

Councillor wards are scrapped for the 2022 election, with this time around six councillors to be elected “at large” – all voters across the district vote for all six places.

Five sitting councillors are standing again: Robyn Gram, Janelle Hinch, Viv Hoeta, Lyn Neeson and Rabbit Nottage. They are joined by newcomers John Chapman, Molly Jeffries, Iris Pahau, Brian Portland, Brenda Ralph, Bobby Tupu Rata and Peter Zimmer.

Ruapehu Māori Ward

New this election for Ruapehu is the introduc-

Turn to Page 2

YOUR TEAM OF PROPERTY EXPERTS



Aaron Owen

Residential and Lifestyle Sales



Jenny Dekker

Residential and Lifestyle Sales



Olivia Stewart

Residential and Lifestyle Sales



Kay Blaney

Residential and Lifestyle Sales



Pete Stratton

Rangitikei Ruapehu Country Sales



Jordan Davis

Commercial & Industrial Sales & Leases



Michaela Palacio

Office Manager & Commercial Sales Associate

With a proven track record, Bayleys Ruapehu are committed to achieving outstanding outcomes across residential, lifestyle, rural and commercial real estate. The sales consultants who cover Ruapehu, Taumarunui and Northern Rangitikei, have the experience to deliver our clients the best possible results - whatever the challenge.

Engage with the professional Bayleys Ruapehu team of well-connected, dedicated property experts today.

Bayleys Ruapehu 06 385 0170 | 16 Goldfinch Street, Ohakune

BARTLEY REAL ESTATE LTD. LICENSED UNDER THE REA ACT 2008

BAYLEYS

ALTOGETHER BETTER

Residential / Commercial / Rural / Property Services

RUAPEHU BULLETIN 17 August 2022 • 1

All Ruapehu posts to be contested

From Page 1

tion of three Māori Ward councillor positions. Candidates are: Channey Duncan Turoa Iwikau; Fiona Kahukura Hadley-Chase; Rob Moke; Pita Pehi; Korty Wilson; Corey Wynyard.

Waimarino-Waiouru Community Board

Seven people are competing for five places on the southern Ruapehu community board.

Incumbent member and current board chair John 'Luigi' Hotter is standing again, joined by Geoff Anderson, Kay Henare, Jayde Lowe, Colin Pakai, Angel Reid and Stu Robinson.

Ōwhango-National Park Community Board

Five places on the central Ruapehu board has six people in the contest, with three currently serving on the National Park Community Board – Murray Wilson, Peter Zimmer and Simon O'Neill. They are joined by Anthony Gurr, Eddie Marsters and Dene Priestley.

Taumarunui-Ōhura Community Board

There are nine candidates standing for the five places on the new Taumarunui-Ōhura Community Board. They are Michelle Campbell, Andrew Fraser, Molly Jeffries, Luke Pepper, Aroha Rudkin, Priscilla Spooner, Sopie Stockbridge, Valma Wallace and Oriwia Wanakore.

Eating out in the Ruapehu District

CYPRUS TREE

79 Clyde St, Ohakune Ph: 06 385 8857
Check out our new summer menu. Kiwi craft beers, boutique wines and cocktails to quench that summer thirst. Playroom for the kids, foomball, air hockey and spaces to keep the kids entertained. Spectacular mountain views. A great place for casual get togethers or special occasions. Contactless takeaways available. Open 7 days, 5pm till late.

KINGS BAR & RESTAURANT

3 Rimu St Ohakune Junction Ph: 06 385 8648
Est in 1913, historic Kings offers an inviting menu by locally renowned chefs, a great selection of boutique wines and is the exclusive venue to offer Ruapehu Brewing Company beers on tap. See our Facebook page for what's on. Wednesday – Friday from 4pm and Saturday and Sunday from 2pm.

POWDERKEG

Bottom of the mountain road Ph: 06 385 8888
The iconic Powderkeg gives you that warm alpine feel with large open fires, hot mulled wine and a great craft beer selection. With over 30 years' commitment to service and good quality free range food. Follow us on instagram @powderkegbar for our weekly deals, parties and giveaways. Great breakfast and delicious brunch cocktails. Open Monday to Friday 7am – 11am and 3pm – late. Saturday & Sunday 7am – late. See you at The Keg.

UTOPIA CAFÉ

47 Clyde St, Ohakune Ph: 06 385 9120
Open 7 days from 7:30am – 3:30pm for all day breakfast and lunch. A cosy memorable atmosphere with a great range of cabinet food and beverages, including regional famous Volcanic coffee, Frappé and smoothies. Vegan/Gluten-free options for both savoury and sweet are available. Speedy free Wi-Fi! A perfect place for everybody!

What's on around Ruapehu

Raetihi Country Market 20 August
Fallout Festival 27 August - 11 September
NZ Mountain Film Festival 8 September

Ski, Board & Bike
Cnr Ayr St & Goldfinch St, Ohakune
06-385-8433, tcbskiandboard.co.nz

T C B

Please email: ads@rupahebulletin.co.nz or call 06 385 8532 or if you have something to add to this column.

Ngāti Rangi appoints new pou ārahi

Ngāti Rangi chair Whetu Moataane has announced the appointment of Helen Leahy as the new pou ārahi (leader, supporter, chief executive) for Ngāti Rangi entities Ngā Waihua o Paerangi and Te Tōtarahoe o Paerangi.

Helen comes to the role having spent the previous seven years as chief executive of Te Pūtahitanga o Te Waipounamu, the Whānau Ora Commissioning Agency for the South Island.

Helen holds numerous national and ministerial appointments; including membership on the Covid-19 Māori Monitoring Group; the Energy Hardship expert panel; and the independent panel for Understanding Policing Delivery. Helen also brings with her 25 years of experience as a senior ministerial and policy advisor, including chief of staff and national secretary for the Māori Party.

"As a Board we are confident that Helen will be able to lead Ngāti Rangi during the next phase of our journey," says Mr Moataane.

"We are thankful for the strong foundation laid by our outgoing pou ārahi and are excited by the unique skillset Helen will bring to our iwi, our organisation, and our wider community, that will help elevate our approach for the next phase of the implementation of Rukutia te Mana, the Ngāti Rangi settlement."

Helen's passion for Whānau Ora will be a vital foundation in the drive to consolidate relationships across government through Te Kōpae; a collective framework to promote the economic and social wellbeing of Ngāti Rangi.

"I am so impressed by the legacy of Ngāti Rangi leadership and love that has culminated in such a powerful vision for uri," said Ms Leahy.

"I wanted to honour those who walked this journey before us and all those today who inspire me in my greatest responsibility as a Māmā and a Nana of Ngāti Rangi uri".

"The strategic aspiration of the iwi is kia mura ai te ora o Ngāti Rangi ki tua o te 1000 tau: that Ngāti Rangi continues to vibrantly exist in 1000 years. This is an audacious goal; one that will guide my thinking and influence my actions. I feel greatly privileged by the opportunity to serve whānau in this way."

"Helen has an intimate knowledge of us as Ngāti Rangi and has been a stalwart supporter of our settlement journey," said Whetu Moataane.

"Helen is the right person to lead and progress the growth and development of our organisation and Ngāti Rangi as a people as we strive to vibrantly exist in our majestic landscape."

Helen and her whānau have recently returned home to the Ruapehu rohe. She will officially commence her role on 25 August, following a pōwhiri to be held at Maungārongo Marae in Ohakune.



Helen Leahy, heading local iwi organisation.

Power funding boosts local groups

Local power company, The Lines Company (TLC) has released its second community funding round this year, which has provided 13 organisations with financial grants.

Local community groups and organisations were encouraged to apply for TLC's recent community funding round, which aimed to support groups across the network who were doing good in the community.

Preference was given to projects and events focusing on energy efficiency or

supporting youth and whānau.

This round was the second of three community funding rounds for the 2022-23 financial year. It provided \$10,000 in sponsorship funding to help and support the successful groups selected from a pool of 32 applicants.

Te Manu Kōrero O Ngā Mātauranga Central King Country – REAP Society Incorporated was one of the successful applicants in this round and received \$1000 towards its Safe2go programme.

The programme, based in Taumarunui, helps learner and restricted drivers in the community overcome barriers to gain their full license.

Of the 13 community groups and projects from throughout the network that were successful, one is based in the southern Ruapehu District.

Ohakune Carrot Adventure Park Trust receives \$500 towards a new concrete pad at the tourist site

The Taumarunui & Districts Society Incorporated receives \$500 towards archiving and cataloguing the region's history

"Community groups are becoming more aware of the support we can offer through our sponsorship fund," says TLC acting chief executive Mike Fox.

"Our investment to support community initiatives is set at \$400,000 this year through the likes scholarships, community events, sponsorships and partnerships with local organisations, as well as the good work Maru Energy Trust do to help insulate and heat where," said Fox.

TLC's community funding prioritises projects and events that will benefit local communities, have high visibility and reach, and has tried to secure funding from other sources. The main goal of the sponsorship is to benefit as many people as possible within the network.

Applications for TLC's next funding round open on 1 October and close on 31 October. To find out more or to download the application form visit: <https://www.thelinescompany.co.nz/sponsorship/>



New Houses Developments Alterations

Commercial Reclads Relocatables

P: 06 777 3550

E: admin@neate.co.nz

PO: Box 45 4660

Visit Us: <https://www.neate.co.nz/>



Deadline for all advertising bookings and copy is 5pm Fridays!

It's important that we get your ad booking and copy in on time, so that we have time to check it, plan the best layout and work on producing a better paper for you!

Army honours Mt Ruapehu tragedy soldier

The New Zealand Army honoured and remembered Private David Stewart NZBM in ceremony on Saturday, by dedicating his name to the 1st Battalion, Royal New Zealand Infantry Regiment (1 RNZIR) Theatre situated at Linton Military Camp.

Private Stewart lost his life through the selfless acts of looking after others during a blizzard on Mt Ruapehu in August, 1990. He was one of six military personnel who died during the alpine

training exercise – the largest loss of life 1 RNZIR has suffered in any one event in the unit's history.

"David's selfless actions embodies all the best traits we want in our people. The theatre was chosen to honour him because it is our learning hub for our junior soldiers," said 1 RNZIR Commanding Officer Lieutenant Colonel Logan Vaughan.

"They will walk into the David Stewart NZBM Theatre to carry out their training and will read

about his bravery. That will help them understand the values of the soldiers in the 1st Battalion and the culture they are now a part of."

Chief of Army Major General John Boswell was in attendance alongside whānau and dignitaries.

"What we are doing here is recognising the courage of a brave and selfless young soldier who lost his own life caring for his comrades in appalling conditions. This serves as an enduring reminder

to Private Stewart's bravery on the mountain all those years ago."

At the conclusion of the dedication service, the Last Post was played, poppies were laid and volleys fired.

The five others who perished on Mt Ruapehu were Privates Brett Barker, Stuart McAlpine, Mark Madigan, Jason Menhennet and Able Rating Jeffrey Boulton. All were honoured during proceedings.



At right: Kathy Stewart, mother of Private David Stewart, with Chief of Army Major General John Boswell at the dedication ceremony for the David Stewart NZBM Theatre at Linton Military Camp. At left, they unveil the plaque at the Theatre. Photos supplied.

Two vie for Horizons Ruapehu spot

Two women will contest the Ruapehu spot on the Manawatu-Whanganui Regional Council (Horizons) in the local body elections.

They are accountant and past-Ruapehu councillor Nikki Riley and Gail Gray, a member of Ruapehu Federated Farmers executive.

Gail Gray is nominated by Luke Pepper and Michael John Rogers, while Nikki Riley is nominated by David Scott and Stephanie Rollinson.

Local government candidate nominations closed at 12 noon today with 22 total nominations being received for Horizons Regional Council.

Electoral officer Craig Grant says the nominations were received for Horizons' 14 seats, including two new Māori constituency positions.

"The single seats for the Tararua and Raki Māori constituencies are not being contested. So Allan Benbow, the current councillor for Tararua, and Turuhia (Jim) Edmonds are declared elected unopposed.

"We received two nominees for Ruapehu with one seat to fill, five for Manawatu-Rangitikei with two seats to fill, five for Palmerston North with four seats to fill, three for Horowhenua with two seats to fill, and two for Tonga Māori with one seat to fill.

"We're pleased with the number of candidates across the board and are looking forward to seeing the voting outcomes."

Mr Grant says this year's candidates are from a variety of backgrounds, which is important for providing communities with the choice of diversity across the council.

Candidate statements will be available at www.horizons.govt.nz.

"We encourage our communities to read these to help inform who they vote for to represent them in decision making," says Grant.

Voting papers will be posted out to all those enrolled between 16 and 21 September. Completed papers must be received by 12 noon on 8 October to count.

"We're encouraging the public to vote ahead of time to allow enough time to post it back.

"Your voice matters, so make it heard. This is your chance to say who you want to represent you on Regional Council," says Grant.

Protect yourself, your whānau and community

Vaccination Clinic



Where

Winstone Pulp International Ltd

When

18 August 2022

**All welcome 5 and over
(16 and over for boosters)
10am - 3pm**

*Or book your vaccination for
a day and time that suits you*

Flu Vaccinations also available

First Boosters are for 16 and over.

Second boosters are for high risk and 50 and over.

Note: if you have had covid you'll need to wait three months before you can have your vaccination.

**Flu
vaccinations
too**



Book My Vaccine

**0800 28 29 26
BookMyVaccine.nz**

**Unite
against
COVID-19**

**WHANGANUI
DISTRICT HEALTH BOARD**

Letters

Housing plan

• Mr Kirton's plans (see Ruapehu Bulletin, 3 August) will not take much work to achieve should he be elected mayor as these plans have already been implemented by the current Council.

We all agree that our communities deserve warm healthy homes at an affordable cost. To achieve this we need solid partnerships with Kainga Ora, iwi, aged care providers and other investors.

Council has been very proactive in building these partnerships and developing spatial plans. These plans include making Council land available and making both subdivisions easier and zoning changes to our District Plan.

Council has always welcomed new developments and already has a user-friendly approach in supporting any developer through all parts of the planning process which includes one-on-one time with our planners and other dedicated staff.

Compliance costs enforced by both the Resource Management Act and the Building Act can be barriers to development, but these are Central Government requirements through legislation and NOT local policy that can be changed as simply as Mr Kirton indicates.

Current Councillors have laid a solid foundation for the future of housing in the Ruapehu District and have consulted with our communities and iwi along the way. Yes, there is more to do, and I expect all new elected representatives will work hard to achieve our housing plans for the future.

Karen Ngatai, deputy mayor, Ruapehu District Council

Bureaucratic manoeuvres

- Bureaucracy and structure whilst aid-

ing in good governance can often be used to stifle and inhibit the flow of information needed for good decision making. Here in Ruapehu that is sadly often the case. In mayor Cameron's misleading response to my press release (Ruapehu Bulletin, 10 August, Letters) he says Community Board Members are restricted from contacting the chief executive directly in order to ensure proper process and manage work demands on the chief executive.

Proper process since Adie Doyle's gaging motion in 2018 is for board members to put our enquiries to chief executive, Clive Manley through the mayor. I'm still waiting for a response to a question I put to the mayor in November 2021. I asked mayor Cameron what happened to the funding for the Taumarunui and Raetihi rural hubs, which have yet to eventuate. In this case proper process has ensured there is no answer as why government funding has been made available but the projects for which it was intended have never eventuated.

My job as a community board member is first and foremost to support the Waimarino Waiouru Community of which Raetihi is a part. What has happened to the funding intended for rural hub for Raetihi is a pertinent question which could be cleared up with a simple five-minute phone call to the CEO. The fact that I'm prevented from making that call speaks to a culture secrecy within Council that is antithetical to good governance.

Hopefully the new council elected in October will bring a change to that culture and put our communities first.

John Chapman, Candidate for Ruapehu Council

Weekend chopper rescues



The Greenlea Rescue Helicopter was called to Whakapapa Ski Area twice in recent days to attend to patients suffering serious medical events.

A man in his 60s suffered a serious medical condition at Whakapapa Ski Area on Friday and was flown by the Greenlea Rescue Helicopter to Rotorua Hospital for further treatment.

On Saturday morning, 13 August 2022, the Helicopter was tasked to Taumarunui Hospital for a female in her 20s who was in labour. She was flown to Waikato Hospital for further treatment due to birth complications.

In the afternoon, the Helicopter was tasked to the Whakapapa Ski Fields to attend to a man in his 60s with a serious medical condition. He was picked up with the assistance of the Police and the Ruapehu Alpine Lifts ski patrollers. He was flown to Waikato Hospital for further treatment.

On Sunday morning, the Helicopter was tasked to Turangi for a male in his 70s with a serious medical condition. He was flown to Waikato Hospital for further treatment.

Also on Sunday the Helicopter was tasked to Ohangwa for a female patient with a medical condition. The patient was flown to Waikato Hospital for further treatment.

Deadline for all advertising bookings and copy is 5pm Fridays!

It's important that we get your ad booking and copy in on time, so that we have time to check it, plan the best layout and work on producing a better paper for you!

Ruapehu Bulletin

ISSN 1170-1676 (print)

ISSN 1178-7406 (online)

Published by Ruapehu Media Ltd

Phone (06) 385 8532

45 Clyde Street, Ohakune.

Ruapehu's only locally owned weekly community newspaper. Established 1983.

Reaching homes every Wednesday in Ohakune, National Park, Raetihi, Waiouru and surrounding rural areas.

Publishing Editor:

Robert Milne – robert @ ruapehubulletin.co.nz

Advertising Rep:

Jude Chevin – ads @ ruapehubulletin.co.nz

Printed by Stuff Printers, Petone

Advertising Deadline 5pm Friday

Community and Emergency Services

Alzheimers Whanganui Inc

Email admin@alzheimerswhanganui.org.nz or for support phone 06-345 8833

Budget Advice

Email waimarinobudgetservices@gmail.com or phone 06-385-3253 and leave a message.

CCS Disability Action (Whanganui)

Sheryl Brightwell 0800-789-654

Child, Adolescent and Sexual Health Nurse

06-385-5019

Child Youth and Family Service

0508-326 459

Churches

Anglican, 06-385-4957. Baptist, a/h 06-385-3100. Catholic, 06-385-8858 or 027 606 5186. Gospel Chapel, 06-385-8453. Presbyterian, 06-388-0675 or 06-385-8708. Waiouru – duty chaplain 06-387-5599 ext 7031 or 021-493-692

Civil Defence

Andrew Chambers 07 895 8188, 021 247 7340

CLAW community free legal advice

Whanganui 06-348-8288

Doctors: In an emergency call 111

Ruapehu Health Ltd 06-385-4211

Information Centres

Ohakune 06-385-8427, Raetihi 06-385-4805

Ngati Rangī Community Health Centre

06-385-9580

Plunket Society

Plunket Nurse 06-385-5019

Police and Search & Rescue Emergency, call 111

Ohakune 06-385-0100, Raetihi 06-385-4002, Waiouru 06-387-6884, Military Police 0800-50-11-22

Red Cross

0800 RED CROSS (0800 733 27677)

Rotary Club Raetihi - Ohakune

0210 434 161

Ruapehu REAP

0800 00 REAP (0800 007 327)

Ruapehu Maori Wardens

Email: ruapehumaoriwardens@gmail.com

St John

In an emergency call 111

Taumarunui Counselling Services

For confidential counselling in Waimarino phone 07-895-6393

Victim Support Contact Centre

0800 842 846

Waimarino Cancer Society

Co-ordinator 06 348 7402 or Kerri Dewson-Pratt 022 196 7355

Waimarino Health Care Centre

Raetihi 06-385-5019

Waimarino Community Toy Library

waimarinotoylibrary@hotmail.com

Women's Refuge

0800-REFUGE 0800 73384

Ruapehu Mayor

Don Cameron, 021 202 7629

National Park Community Board

Board members: Simon O'Neill 021-661-159; Peter Zimmer 027 479 1926; Mark Bolten 021 191 5385; Clark McCarthy 027 475 0561. RDC rep, Murray Wilson 07-892-2774.

Taumarunui/Ohura Ward Committee

07-893-8575; Graeme Cosford, 07-895-7572; Karen Ngatai, 07-896-6658; Kim Wheeler 027-229-1527; Adie Doyle 027-495-3308; Robyn Gram 027 389 1912; Lyn Neeson 07 895 7803

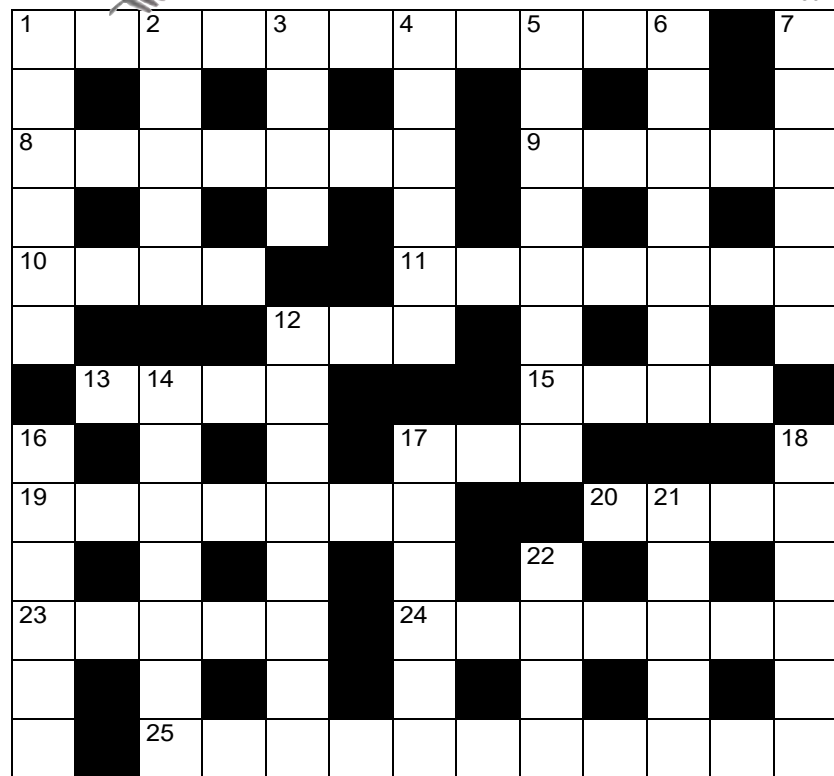
Waimarino-Waiouru Community Board

John 'Luigi' Hotter, 06-385-8193; Allan Whale, 06-385-9139; RDC reps Rabbit Nottage, 021 111 6514, Vivienne Hoeta 022-65-88-320, Janelle Hinch 022 385 8683. Other ward councillors Elijah Pue 027 740 6253

Guidelines is published free of charge. Please help us to keep it up to date – call us if your details change, or if you see something that needs changing: 06-385-8532

THE NZ CROSSWORD

1894



©THE PUZZLE COMPANY

Across

1. A gourmet or epicure (11)
8. Fourth-largest province by population (7)
9. Sticky substance from trees (5)
10. Stove (4)
11. Safety glasses (7)
12. NZ corruption agency (abbr) (3)
- 13/15. Intelligence alliance between NZ, Australia, Canada, UK, and USA (4,4)
17. Hillary and Tenzing reached the summit of Everest on the 29th day of this month, 1953 (3)
19. Financial overseer (7)
20. Abalone, in New Zealand (4)
23. Surname of NZ race driver and NZ author (5)
24. Besotted (7)
25. Lacking spending restraint (11)

Down

1. Unqualified tradesman (colloq) (6)
2. Sound (5)
3. Satisfactory (4)
4. Roadworks sign (4-2)
5. Flavour of tea (4,4)
6. Settle (7)
7. Penalise (6)
12. Car safety device fully compulsory in NZ by the 1980s (4,4)
14. Pander to (7)
16. Type of nut (6)
17. Name given to 1970s drug trafficker Martin Johnstone (2,4)
18. Bird found at Cape Kidnappers (6)
21. Māori name for Great Barrier Island; also the canoe which brought Turi and his people from Hawaiki to New Zealand (5)
22. Travel stamp (4)

Previous solution

Across: 6. Narrow, 7. Slogan, 10. Hinemoa, 11. Miner, 12. Noel, 13. Alley, 16. Throw, 17. Suds, 20. Erect, 21. Peckish, 22. Dog box, 23. Mooloo.

Down: 1. Onhunga weed, 2. Trinket, 3. Comma, 4. Plummet, 5. Aging, 8. Normal school, 9. Tall poppy, 14. The Tron, 15. Cubicle, 18. Beige, 19. Scoop.

Mayoral candidate predicts tough three years

Adie Doyle is one of four candidates who are standing for mayor of the Ruapehu District in the upcoming local government elections. He has provided the following statement (abridged for space) to kick off his campaign

• I am concerned that the Ruapehu is heading into a challenging three-year period, including a loss of experienced councillors and community board members, local government and 3-waters reform, a pandemic, a recession, as well as rising inflation and interest rates.

This is not scare-mongering, it is the economic and election cycle in action and it has happened all before.

The District will need someone with business, leadership and local government experience to successfully negotiate these choppy waters.

I do not see myself competing in a mayoral race. I see it more as a job interview and, as such, have researched what the role actually entails, directly from the Local Government New Zealand handbook. There are three specific and overlapping roles of a mayor:

Political Leadership

It is the role of the mayor to guide and encourage councillors and community board members in their duties. This includes understanding what their role is, distinguishing governance from management, the correct application of standing orders (meetings rules) and continued professional development etc. Get this right in the first 100 days and the foundations have been laid for a successful triennium.

In my opinion, this aspect can be improved significantly with the right leadership. Over the last six years I have seen this done well and not so well. As mayor, I intend to have regular one-on-one meetings with councillors and will encourage regular meetings between councillors and the chief executive. Councillors will each have one area of expertise – housing or roading – and there will be regular fieldtrips so all councillors understand the district and its challenges. Councillor-only time to build collegiality is a must. Councillors must be able to freely express themselves in an environment of mutual respect.

Policy Leadership.

This involves translating community wishes into defined outcomes and includes overseeing the District Plan review, the Annual Plan as well as the Long-Term Plan.

We are entering a period where all ratepayers are likely to be exposed to a significant recession. At present our settings

for rate rises are inflation plus 2%. Given the rapidly changing nature of the economic climate, that level of increase may no longer be affordable. Dependent on the level of recession, it is possible that efficiencies ranging between \$265,000 (-1%) and \$800,000 (-3%) will be required this term. Having experienced the oil shock of 1979, the sharemarket crash of 1987, the eruptions of 1995-96 and the global financial crisis of 2008, tightening one's belt is not new to me. Furthermore, the District Plan will require updating in the midst of Resource Management Act reform. Given that I have worked with the current District Plan over my 20-year career as a rural and urban valuer, I am well versed with it and its effect on your property values.

Community Leadership

It is the role of the mayor to be the people's champion. The majority of challenges currently experienced by Ruapehu residents come down to two things: employment and income. My approach is to encourage every citizen over 16 in a mindset change, to buy into the concept that a higher than average unemployment rate and a lower than average household income is no longer acceptable within this district. These figures cannot be significantly improved by the mayor alone and every citizen would play their part, look at their own situation and of those around them, through that lens. It is only by working together, that significant change is achievable.

A review of our Economic Development strategy is due and represents the best driver of that change. This could include the creation of a Council Controlled Organisation (CCO) whose key performance indicators would be to shift the Ruapehu from its current below-average level to average (or higher). Opportunities include a district-wide employment agency, an economic development unit and a district-wide marketing arm that would work closely with Visit Ruapehu. Start small, get some runs on the board, then gear up as the economy improves.

There are many other challenges facing Council, the future of the old Taumarunui saleyards, earthquake-prone buildings, implementing our housing strategy, our self-imposed debt level, climate change adaptation and bridge renewals to name a few. I am up for these challenges, in fact, they inspire me.

If elected as your mayor, at the end of this three-year term, my goal is for the Council and the district to be sailing smoothly. That outcome is what I have successfully sought while leading other organizations, the Trust Waikato pool and its refurbishment being one example.



Adie Doyle, running for mayor of Ruapehu.



Ohakune 106 Goldfinch Street

Do up or develop

This represents a golden opportunity to stake your claim on a prime piece of real estate in central Ohakune. This 2,023sqm (more or less) freehold block with no covenants, holds the key to rewards, but there is work to be done to get there.

The "as is where is" cottage on the property is either a do up or pull down and with the right vision and determination, this property could be turned around and given a new lease of life. Alternatively, subdivide (subject to council consent) and develop or build your dream home on a good-sized yard.

bayleys.co.nz/2900523

2,023sqm 2 1

For Sale by Deadline Private Treaty
(unless sold prior)
3pm, Wed 31 Aug 2022
Jenny Dekker 027 455 5674
jenny.dekker@bayleys.co.nz
BARTLEY REAL ESTATE LTD, BAYLEYS, LICENSED REAA 2008

Horopito 136 Matapuna Road

Where elegance meets country

Approaching down the long, tree-lined driveway you can't help but admire this striking residence, constructed with family living and entertaining in mind. Cleverly planned and masterfully executed, this beautiful home was designed and built by its current owners in 2008. In the intervening years, it has been cherished and loved in many ways, delivering high-end living over a generous three stories.

Open home 2-3pm Sat 20 Aug

bayleys.co.nz/2900519

8.29ha 6 3 2

For Sale by Deadline Private Treaty
(unless sold prior)
3pm, Mon 5 Sep 2022
Olivia Stewart 021148 6044
olivia.stewart@bayleys.co.nz
BARTLEY REAL ESTATE LTD, BAYLEYS, LICENSED REAA 2008

Keeping up to date with your vaccinations is really important, even if you've already had COVID-19.

You can catch COVID-19 more than once. Boosters are your best protection from severe illness, ending up in hospital, and even death.

Keeping up to date with your vaccinations is one of the most important things you can do to help protect yourself, your whānau and your community.

A booster will provide extra protection from a previous vaccination and help your immunity be stronger and last longer. And, by staying as healthy as you can, you help reduce pressure on our communities, businesses and the health sector.

If you've had COVID-19, you can get your booster three months after you tested positive. Make sure you are up to date with your COVID-19 vaccinations.

Check your eligibility at **Covid19.govt.nz** or call **0800 28 29 26**.

Unite
against
COVID-19

Te Aka Whai Ora
Māori Health Authority

Te Whatu Ora
Health New Zealand

West is back, Giant is on for skiing

Making the most of a bad snow situation, Ruapehu Alpine Lifts crews have been hard at work to get more snow trails open, with the Far West T-Bar opening on the weekend, one of its earliest openings ever, says RAL.

Work on the Far West T commenced last week, with the cable first pulled and then rigged, while groomers worked in parallel building trails, including the Traverse of Fear.

Also open on the weekend was the Delta Quad, followed by the Rangatira Express.

“A lot of mahi and some snowmaking magic have brought these two lifts into view and will give more access to intermediate terrain, for skiers and snowboarders,” said RAL on Friday

Over on Tūroa, snowmaking and grooming saw the Giant Chairlift open for riding for the first time for 2022.

This adds to trails on the High Noon Express – Big Bowl, Little Bowl, Snowbird and Vertigo.

Snow may be a bit thin on the ground low-down on Mt Ruapehu, but there is still fun to be had. Photo: Joel McDowell.



How lines firms are helping lead the energy revolution

By Graeme Peters – Chief Executive, Electricity Network Association

The world is at the start of an energy revolution. With renewable electricity increasingly replacing climate change-causing fossil fuels across our economy, we will shortly require much greater volumes of reliable and sustainable electricity for homes and businesses.

A lot of the public focus has been on how New Zealand will generate the low-carbon electricity we are going to need to power an electric vehicle (EV) fleet and industrial processes that have previously relied on coal or gas.

The honest answer is we don't yet know what our generation mix will be. However Transpower has forecast electricity demand to jump 55 percent by 2050 and the Government has set the ambitious target of renewables being 100 percent of our power supply by 2030 to help meet our long-term climate commitments. This will require a lot more wind and solar farms.

But generation is just one piece of the puzzle. We also need to be smarter about how we manage our electricity networks, adopt new technology, and support changing customer preferences. Our future networks will be much more complex than they are today, bringing challenges that include two-way flows of power, greater peaks and troughs in electricity use and more complexity in matching supply with demand.

In June alone, Transpower issued three notices to encourage immediate action to avert power cuts. As more of us plug in our cars to be charged and switch from gas heating to heat pumps, how we spread out electricity demand will be an important tool in ensuring our networks are as efficient as possible and for preventing disruptions.

While the technical challenges and risks should not be underestimated, the electrification of New Zealand's energy needs is being eagerly embraced



by lines companies and promises significant rewards for both the climate and consumers.

Smart load control

New technologies like smart load control devices and EV smart chargers are going to be crucial as part of this transition, by allowing lines companies to communicate with devices in their customers' homes, helping to seamlessly reduce peak loads. This isn't just efficient; it can also save us all money by avoiding unnecessary investment in over-building new generation and network upgrades.

While batteries for storing electricity at home – for example from solar panels on the roof for use in the hours of darkness – are in relatively few homes, there has been an explosion in popularity of EVs. Importantly, these come with their own batteries, and they are big ones. EV-owning households will soon have the option to use power stored in their cars to help power their homes in emergen-

Turn to Page 8

BAYLEYS

NEW LISTING

Rangataua 56 Nei Street

Village living

Nestled on Nei Street in friendly Rangataua, approximately 5km from Ohakune is this wee gem. With uninterrupted views of majestic Mount Ruapehu, this three-bedroom character cottage offers the ultimate in easy living.

With lovely native polished wooden floors, an open-plan living/kitchen area, covered porch, and aggregate driveway this property is a very attractive proposition for either first home buyers or those looking for a holiday home or rental property.

bayleys.co.nz/2900522

520sqm 3 1

Asking Price \$459,000
Jenny Dekker 027 455 5674
jenny.dekker@bayleys.co.nz
BARTLEY REAL ESTATE LTD, BAYLEYS, LICENSED REAA 2008

Ruapehu Horizons candidate

Gail Gray is one of the two candidates standing for the Ruapehu District's place on the Manawatu-Whanganui Regional Council (Horizons). She has provided the following profile.

• Having owned a dairy, sheep and beef farm and served 12 years on the Ruapehu Federated Farmers Executive, I understand the pressures that our rural community is facing and the complicated processes behind compliance, policies and submissions.

A background in management and sales off farm has given me experience in building and maintaining relationships, utilizing strengths within my own team, and has shown me the importance of communication.

We moved to Raurimu 13 years ago, after purchasing our family farm, and I have been privileged to be a part of such a welcoming, supportive, and friendly community. It is because of this that I wish to represent you on the Horizons Regional Council and to enable me to give back to my community.

I am a firm believer that people are the backbone of a community and should be kept informed as to what is happening in their community. To this end I will be making it a priority to ensure our community participates in all decisions made. It is local solutions for local people that will make the most difference.

There are major issues in our area that need resolution

to ensure we get the right outcomes to protect and enhance our uniquely beautiful environment.

Public Transport

Net zero carbon dioxide target by 2050 means that a practical and affordable alternative to the private car will need to be found. Transport contributes a quarter of our region's greenhouse gas emissions and improvement of public transport services in the Ruapehu area would be necessary for our smaller communities to be in a position to help us reach the regional targets.

Compliance

Layers of compliance take time away from our core businesses and add unnecessary stress. With each authority needing the same information but in different formats, compliance is a long and arduous task. A single evolving, realistic and cost-effective answer is needed.

Water

If or when three waters are implemented, we, as a community, need to have networks in place to ensure that there is consultation with Council, iwi and residents, so that practical, cost-effective and workable solutions are found.

This is my opinion, and I will welcome the opportunity to consult with others in our community to ensure that I will be representing a larger community voice. We need to protect what we have for future generations.



Gail Gray, standing for the regional council.

Ohakune Squash

Tuesday was the final round for Ruapehu Zone interclub at Ohakune Squash Club. Ruapehu College Two beat Turangi 14/4, Ruapehu College One beat Ohakune 14/4 and Rustic Waiouru beat Taumarunui 11/6 needing a games count-back after tying two matches each. Overall season results had the two college teams well out in front with Ruapehu College One on 123 leading Ruapehu College Two by the narrowest of margins, one point behind on 122. Turangi finished on 77, Rustic Waiouru 66, Taumarunui 64 and Ohakune 52.

Round three of inter-house from Thursday had team three narrowly beat team seven 118-114, team one beat team six 118-94 and team two beat team four 111-104 whilst team five picked up 100 points for the bye. Points to date are close with team one on 333, team seven 327, team two 322, team five 312, team three 307, team four 304 and team six 273.

This week at 5pm, team one plays team three, at 6:30 team seven plays team five, at 8pm team six plays team four whilst team two has the bye. Team one helps with kitchen duties for the first half 5:00

until 7:15 and team six is on the second half from 7:15 to 9:30.

Over the weekend Emma Rowe continued on her winning way, this time winning the top women's division of the Central Districts Masters tournament in Levin. She beat top seeded Fiona Gifford-Moore from New Plymouth 11/4, 8/11, 3/11, 11/8, 11/5 in the final. This win goes nicely with her Central Open women's title earlier in the season.

Entries for club champs are rolling in. First up will be the graded club champs next week. Entries can be done on squash or by entering on the sheets at the club by Saturday. The following week will be the Open club champs and the tenderfoot and primary school divisions. Masters, Seniors and Junior club champs will be held the week starting 5 September.

Raffle results from the club's recent raffle were: Mt Ruapehu 2022 season pass 169, weekend day pass 220, family Sky Waka sightseeing pass 238, weekday day pass 155, weekday day pass 191.

Several players will be travelling to Taihape's tournament this weekend.

Energy revolution

From Page 7

cies or when electricity demand, and prices, are particularly high. They can then charge them at night after they are in bed, or in the middle of the day, both times when demand and prices drop.

This is the reality that The Lines Company (TLC), which serves the King Country, Ruapehu and Central Plateau communities, is preparing for now. It already has 48 public EV chargers on its network and is currently processing the installation of an additional 9 public fast chargers. The amount of solar distributed on its network has also increased on average by 60% every year since 2017, reflecting how quickly new technologies are being adopted.

Importantly, TLC is planning for the increased capacity it will need to handle on its network as the transition of industrial process heating from fossil fuels to electricity accelerates. It recently conducted a survey with its top 10 industrial customers, who reported that they would add seven

megawatts of load in the event they convert to electricity from process heat. That's enough to power 3500 homes.

Investment in growth

Managing this growth in demand requires investment. In February, TLC commissioned the largest new build in over 50 years with the living of the new \$5.6 million Waitete substation, increasing substation capacity by 50% and enabling a stable supply to homes and businesses in and around Te Kūiti for the next 20 years. Across the next 10 years, it is budgeting around \$218m for network renewal, reliability and growth, including \$50m in upgrades to support the extra demand expected from decarbonisation across its network.

A lot is happening in the background right now that does not attract much attention, but you can be assured lines companies are well-advanced on meeting the challenges of climate change and the electrification of our economy.



Experts ~ at your service

Landscaping



Certified Horticulturists (Hort.Cert.NZ)

KRISTIN 022 350 9220 VICKI 021 606 743

facebook.com/naturescapersnz

naturescapersnz@gmail.com

Plumbing / Drainlaying



THE PLUMBERS THAT MAKE IT HAPPEN

Bathroom / Kitchen Renovations
New Builds Woodburning Fires
Central Heating Systems
Domestic & Commercial Plumbing Maintenance

"Your comfortable living experts"
www.matthobbsplumbing.co.nz

06 3881400 / 021 0263 4206

Septic Tank Work

Bennett's Septic Tank Cleaning Services

Septic tanks, water tanks, grease traps.

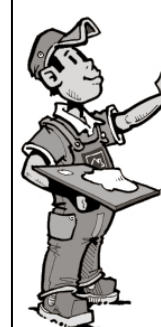
Call us for fast efficient service.

Phone Chris on
06-388-0452

Ph 06 388 0452

Plasterer

Trevor Scott Plastering



Gib fixing

Plastering

Painting

Vacuum sanding

Free Quotes

trevskihard@gmail.com

Ph 0272 412 928

Carpet Cleaning



WANGANUI

CARPET & UPHOLSTERY CLEANING
24 HOUR FLOOD CALLOUT

We specialise in stains, odours and hard to clean carpets and fabrics.

P.U.R.T - Pet Urine Removal Treatment

cdwanganui@outlook.co.nz

www.chemdry.co.nz

Wanganui & Ruapehu Regions

0800 22 78 22

Mortgage & Insurance Adviser

Jason Salle
Millenium Insurance Group

Mortgages

• First home buyers

• Investment property

• Fixed rate expiries

Insurance

• Life insurance

• Trauma insurance

• Income protection

• Health insurance

jason.salle@xtra.co.nz

Taumarunui

Ph 027 201 3203

Land development

VERSATILE BOBCATS LTD

Bobcat+Truck Hire
Section clearing
Driveways Formed

For All Your Land Development Requirements

Contact Steve Gray

Free Quotes

PH: 0276 854 854 / 06 3854 854

Ph 06-385-4854

Property Management

Shelley Oliver
Property Manager



Your Local
Property Managers

Your Property Management Specialists

Only 8.5% + GST

Commission on rentals p. 0800 114 978

All inclusive

e. shelley@ylpm.co.nz

No other fees w. www.ylpm.co.nz

* No inspection fees * No Admission Fees * No Account Fees
* No Disbursement Fees * No Maintenance Fees * No Tribunal Fees

Ph 027 903 5566

Auto Service



RUAPEHU TOYOTA

- WoF – cars \$60, trailers \$45 all makes & models
- Qualified mechanics
- Tyres – cars, motorbikes, ATV's, side-by-side
- Batteries

Cnr Seddon St & Valley Rd, Raetihi
wanganuitoyota.co.nz
Right here in Raetihi

Ph 06-385 4216

Hire

Why buy it ... hire it! TWEEDDALE HIRE

CHECK OUT OUR EXTENSIVE RANGE OF HIRE EQUIPMENT.
SEE OUR WEBSITE
WWW.TWEEDDALE.CO.NZ



PARTY HIRE: floodlights, tables & chairs, heaters, spit roasters, wheelie bins, chafing dishes, crockery & cutlery, dehumidifier, flute & wine glasses, universal food cooker, portaloos & showers, 3-section marquee, horse float.



Marquee Hire

FOR THE BIG JOBS: digger hire, cherry pickers, pumps, wood splitters, generators, car trailers, post hole borers, furniture trailer, concrete equipment, rollers & compactors, portable trencher



Ph 06 387 5022

Engineering



- Manufacturing and repairs
- Access equipment hire
- Engineering supplies
- BOC gases
- 20T & 50T crane hire

29 Burns St, Ohakune.
027 473 0188 Mark or 027 444 2058 Bruce
Email: sales@ohakune-eng.co.nz

Ph 06 385 8952

Furnishers



Quality furniture flooring and window treatments for the discerning

Geoff Anderson 33 Victoria Avenue, Wanganui
027 283 9551 email wangafurn@xtra.co.nz

Ph 06 345 4554

Plumbing / Drainlaying

B&M PLUMBING LTD

- Plumbing & Drainlaying
- Pumps - sales, servicing & installation of all pumps
- Fires & Solar
- 5 Ton Digger with Augers, Ditchwitch & Tip Truck

"Your local Registered Certifier"



Call Brian 027 436 1075

Email: bmfred@xtra.co.nz



Ph 06 385 4718

Upholsterers



- Furniture Upholstery
- Vehicle Upholstery
- Tarpaulins • Canvas & Leather
- Shade sails • Saddlery

Factory, SH49, Tangiwai, Ohakune.
Mobile 0274-467-289 Fax 06-385-8483
email: westlorne@xtra.co.nz
www.westlorne.co.nz

Ph 06 385 8487

Appliances

Choose the best heat pump designed to heat your home



Free quotes. Total 5-year Warranty.

Your Local 100% Independent Store & Heat Pump Installers

Ohakune TV Electrical

Ph 06 385 8700

Note:

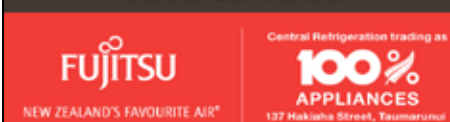
Call Jude to book this space for next week.
Only costs **\$33.21** + GST each week for 50 weeks, in colour! Other options available.
p: 06-385-8532
e: ads@ruapehubulletin.co.nz

Heat Pumps

Call our Refrigeration Engineers for a **FREE Heat Pump quote**

- Interest free terms
- Professional Accredited Installer
- 6 year warranty

0800 10 70 90



Ph 07 895 7348

Local Carpenter/Renovator

- Interior & Exterior house painting
- Timber repairs
- Fence & Deck building
- Garden design & landscaping
- Kitchen & Bathroom refits

Call Luke for a free quote

Ph 022 414 5303

Motor Vehicle Sales



Go Further



mazda

Award Winning Models



Call Dave anytime...
027 485 7693

davescott@xtra.co.nz
I come to see you from my home office

Wanganui Motors | Ford | Mazda

Ph 027 485 7693

Machinery Hire

OHAKUNE MACHINERY

HIRE & TRANSPORT LIMITED

DRY HIRE

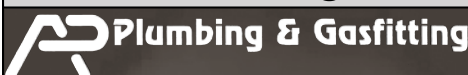
12t digger – \$50 + GST per hour
20t digger – \$60 + GST per hour
CAT D6R dozer, root rake & pipe layer

- Full contracting available
- Heavy haulage
- Attachment hire

Contact Cam

Ph 027 586 1015

Gas Fitting



Cut down on your power bill.

Go gas hot water & heating – supplied and installed.

Call for a consultation.

Phone Denise 027 482 7488 or

Email

accounts@applumbingandgas.co.nz

Ph 06 343 6866



www.ohakune.info

Ohakune... your mountain town

For everything Ohakune

Contact us ads@ruapehubulletin.co.nz or 06 385 8532

Auto Services

AUTO SERVICE CENTRE



Authorised Holden Service Centre

Full workshop services for all vehicles, wheel alignments, computer diagnostics, warrant of fitness inspections, parts, batteries, engine oils.

84 Clyde Street, Ohakune
After hours **027 448 4080**
autoservicecentre@hotmail.co.nz

Ph 06 385 9222

Lawyers

YOUR DIGITAL LAWYERS



CALL US
TO MAKE AN APPOINTMENT
(06)281 3461

WE CAN MEET WITH YOU VIA VIDEO CONFERENCE FROM YOUR SMARTPHONE, TABLET OR COMPUTER

www.dewhirstlaw.co.nz

Ph 06 281 3461

Electrician

Are you looking for an electrician who:

- Turns up on time?
- Keeps his promises?
- Offers efficient service & sound advice?

Then call **Jake Fah** at



REGISTERED ELECTRICIAN
Ohakune - Raetihi - Rangataua - Horopito - National Park
PH. 06 385 3393

Ph 021 770 123

Insulation

INSULATION SUBSIDIES AVAILABLE*

*Terms and conditions apply



0800 327 946
www.easyinsulation.co.nz

0800 327 946

Building Supplies



OHAKUNE DEPOT

FOR YOUR BUILDING PROJECT & DIY NEEDS

MON to FRI – 7.30am – 5pm | SAT 9am – midday

7 BURNS ST, OHAKUNE

Ph 06-385 8414

FOR SALE

FIREWOOD LOGS for sale: pine, gum and wattle logs. 5 or 10 ton truck loads. Free delivery in the Waimarino. Call/text Keith for prices. 021 055 4794

F O R E S T R Y SEEDLINGS, Management Services. Grow your Carbon Now. Local Expertise available. Waimarino Tree Resource. Ian 027 444 3441

WATER TROUGHS, cattle or sheep. Different sizes. Delivered price quoted. Ph 0800-487-633.

BUSINESS NOTICES

GARAGE DOORS, all types of garage doors, specialising in sectional garage doors and auto openers. For a free quote ring Alex Ferrier Building Services Ltd on 07-895-5890.

LAWNMOWING AND SECTION maintenance – Phone Alpine Property Services 0800-896-689 or 027-353-5189 email: info@alpinelawns.co.nz.

HAVE YOU GOT AN EVENT you want to tell the community about? Contact us here at the Bulletin on 06-385-8532.

BUSINESS NOTICES

Insulation Subsidies

Call Easy Insulation
0800 327 946



This Saturday 20 August
at The Centre, Seddon St until 1pm
For stall info phone Angel 0274 316 327
Car Boot Sale. Only \$10 per stall – 3rd Saturday of each month

Thermal Kiln Dried, ready to burn HOT firewood

Guaranteed to light easily, produce fewer emissions, leave less ash, and conduct more heat.

- warmer home
- cleaner chimney
- healthier environment

Available all year round. \$140m³, Bags \$18

Free Delivery Raetihi/Ohakune/Rangataua
\$50 delivery fee National Park + Waiouru

Call Robbie 0274 428 686

LIVESTOCK FOR SALE



LIVESTOCK FOR SALE
60 Autumn Calving FRSNX Heifers

LIVESTOCK REQUIRED
Male Lambs 38-41kg
Bulls 180-200kg
Bulls or Steers 380-420kg
Heifers 400kg and Steers 450kg
Autumn Beef Heifer Calves 100kg

GRANT HALL

P: 027 596 7181 E: grant@dyerlivestock.co.nz
www.dyerlivestock.co.nz

PUBLIC NOTICES



**TE KĀHUI O PAERANGI
TE TŌTARAOE O PAERANGI
TRUST**

HUI-Ā-TAU (AGM)

Saturday 17 September 2022

Raketapauma Marae, Maukuku Road,
Irirangi, Taihape | Online
09:00am pōwhiri

Agenda

9:00am
Pōwhiri and morning tea
9.30am
Karakia and mihimihi
Te Kāhui o Paerangi Chair's report
Te Tōtaraoe o Paerangi Trust
Chair's report
Annual and financial report
Annual plan
Appointment of auditor
Trustee remuneration
Te Kūmete o Paerangi Chair's report
Minutes of previous Hui ā-Tau
Other business
Pānui
Karakia

Copies of the reports will be emailed to all adult registered members approximately two weeks before the meeting.

Please RSVP your attendance or apology to
Felecia Wilson on office@ngatirangi.com or
call 0800 N RANGI

**1 MOUNTAIN ROAD, OHAKUNE
NEW ZEALAND**
0800 NRANGI or 06 385 9500
ngatirangi.com
www.facebook.com/ngatirangi

**Deadline for all advertising
bookings and copy is
5pm Fridays!**

It's important that we get your ad booking and copy in on time, so that we have time to check it, plan the best layout and work on producing a better paper for you!

PUBLIC NOTICES



Whakarato Te Rohe Pōtae

KING COUNTRY TRUST

OWNERSHIP REVIEW

1. King Country Trust (KCT) has undertaken an Ownership Review under its Trust Deed.
2. Pursuant to the public consultation process specified in KCT's Trust Deed persons interested in the proposal outlined in the Trustees' report were given the opportunity to make written submissions on the same from 20th May 2022 to 30th June 2022.
3. No written submissions were received
4. In accordance with the Trust Deed a meeting open to the public will now be held at which the Trustees will make a final decision on the proposal at that meeting.
5. The meeting open to the public will be held as follows:
Date: 31st August 2022 Time: 3.00pm
Address: Oreti Village, 88 Pukawa Road, Pukawa, Lake Taupo

MAYOR in WAIMARINO



Mayor Don Cameron is available to meet residents and ratepayers to talk about any issues or concerns at Ruapehu District Council offices in either Ohakune or Raetihi. Arrangements can be made for people who are unable to travel to either office. To organise an appointment please call either Ohakune (06 385 8364) or Raetihi (06 385 4447).

PUBLIC NOTICES

Section 101, Sale and Supply of Alcohol Act 2012
Turoa Lodge 2021 Limited have made an application to the District Licensing Committee at Ruapehu District Council for the **Renewal and Variation of an On Licence** in respect of the premises situated at **10 Thames Street, Ohakune** known as **Turoa Lodge Bar**. The variation of conditions refers to the following: **That the licenced area be extended to an outdoor fenced smoking area at the main entrance to the premises.**

The general nature of the business to be conducted under the licence is that of a **Tavern**. The days on which and the hours during which alcohol is intended to be sold under the licence, including the proposed extension to the licensed area, are: **Monday to Sunday: 9.00am – 3.00am the following day.**

The application may inspected during ordinary office hours at the office of the Ruapehu District Licensing Committee at Ruapehu District Council, 59-63 Huia Street, Taumarunui.

Any person who is entitled to object and who wishes to object to the issue of the licence may, not later than 15 working days after the date of the publication of this notice, file a notice in writing of the objection with the Secretary of the District Licensing Committee at Ruapehu District Council, Private Bag 1001, Taumarunui 3946.

No objections to the renewal of a licence may be made in relation to a matter other than a matter specified in section 131 of the Sale and Supply of Alcohol Act 2012.

This is the first publication of this notice.

www.ohakune.info

PUBLIC NOTICES



Whakarato Te Rohe Pōtae

KING COUNTRY TRUST

**NOTICE TO CONSUMERS, BUSINESS
HOUSES AND COMMUNITY
ORGANISATIONS**

ANNUAL GENERAL MEETING

The Annual General Meeting of the Trust will be held on
Wednesday, 31st August 2022 at 4pm

VENUE:

Conference Room at Oreti Village Resort, 88 Pukawa Road,
Pukawa, Lake Taupo.

TIME:

Our AGM will be held at 4.00pm with drinks and nibbles to be provided from 4.30pm following the AGM.

AGENDA:

- Consideration and Adoption of Minutes of Previous Annual General Meeting held on 30th August 2021
- Presentation of Annual Report
- Presentation of Annual Financial Statements for the Year ended 31st March 2022
- Appointment of Auditor
- Informal General Business

RSVP NECESSARY:

Please RSVP to our Secretary via email: kcept@xtra.co.nz or phone: 027 4433049.

Annual Reports and Financial Statements will be available from 24th August 2022 from our website: www.kcpowertrust.co.nz

T Jackson, Secretary, PO Box 421, TAUMARUNUI
8th August 2022

www.ohakune.info

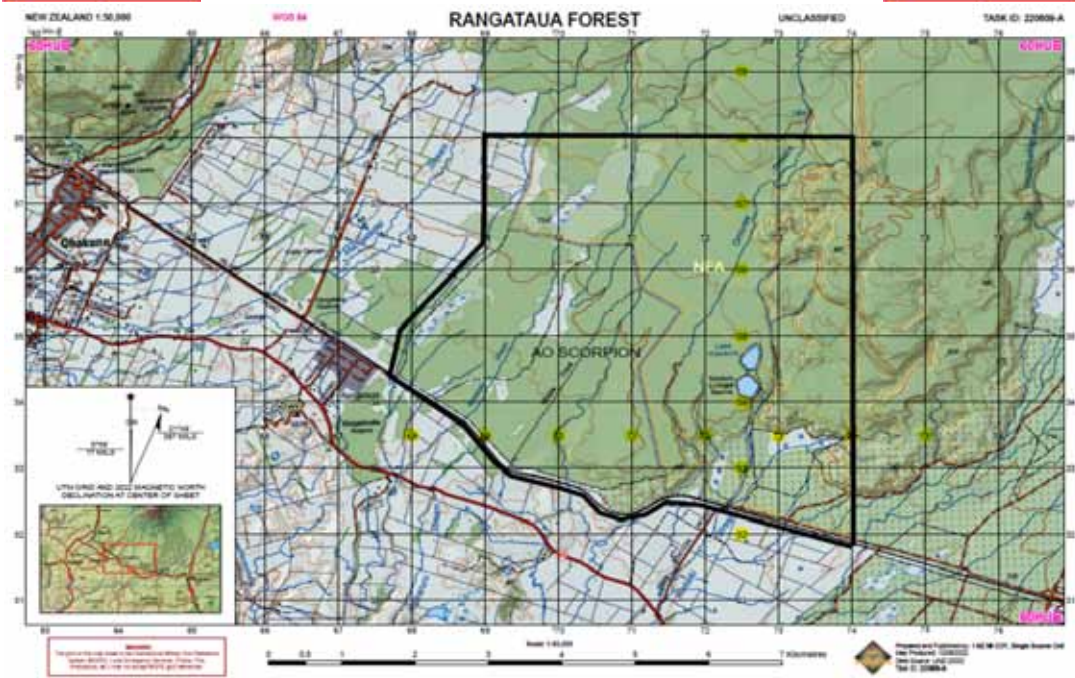
PUBLIC NOTICES

DANGER TROOPS MOVING THROUGHOUT AO SCORPION, BLANK AMMUNITIONS WILL BE USED DURING EXERCISE PERIOD.

COMBAT CORPS TRG - NUI DAT COY - Ex Tropic Warrior
DATES: 14 - 24 Aug 22



P.O.C
IC: SGT Seymour: 0212075575
OC: MAJ Ritchie: 021905765
TAIT: TG3, CH8 WMTA, TRG 4



SITUATIONS VACANT



We're hiring trainee line mechanics

Applications are now open for our 2022 Trainee Line Mechanic programme.

Take the first step in securing a long-term career in the electricity industry.

- Are you looking for a new and exciting career, with a well established local employer?
- Are you keen to be paid while gaining a qualification?
- Do you love physical work and the challenge of learning new things?

Then a career as a Distribution Line Mechanic could be for you!

If successful, you will join a close-knit, highly skilled team of local professionals who pride themselves on their quality work and commitment to our customers and our communities.

For more info and to apply visit thelinescompany.co.nz/work

COMPLIANCE OFFICER SOUTHERN



Our Licensing and Compliance team is looking for an experienced Compliance Officer.

The position is to ensure statutory requirements are met for animal management, noise, parking, litter and Council bylaws.

This includes working with the Community to educate them on their legal responsibilities and assist them into gaining compliance.

You should have experience in handling dogs and stock. You must have an ability to show empathy, both to animals and owners.

You will need to have an ability to use your initiative, work unsupervised and be able to form clear decisions in difficult, tense situations.

Excellent customer service skills, an ability to multi task and be prepared to work effectively in a multi-cultural environment.

The successful applicant will have:

- excellent oral communication and interpersonal skills
- empathy including dealing with emotional and difficult customers
- an ability to interpret policies, procedures and regulations
- an ability to investigate complaints, write reports
- be savvy enough to utilize a variety of computer systems
- a current valid New Zealand drivers' licence

Local geographical knowledge is an advantage not a necessity. This is a permanent role, primarily located in Ohakune & Raetihi.

If you are interested in learning more about this role, or would like to apply please check out our website.

www.ruapehudc.govt.nz

Applications close Monday 12 September 2022.

Rail service views

The community is encouraged to make their voice heard in the new Inquiry into Regional Rail Services launched by Parliament's Transport Select Committee. The Inquiry will look into passenger rail services across the Nth Island, including communities along the Main Trunk Line.

Mayoral Candidate Weston Kirton, who has been campaigning to bring back rail services to the District, says he is delighted that there is finally some progress on the issue.

"I encourage all members of the community to make a submission. You can fill in the online form at www.parliament.govt.nz or write a few lines in an email to ti@parliament.govt.nz. Submissions close on 6 October 2022.

Kirton also acknowledged the work of mayor Don Cameron and who has led a feasibility study into regional passenger services, working with Councils along the Main Trunk Line.

SITUATIONS VACANT

**Business
Administrator/
Accounts Payable/EA**
Fixed Term Position – 9 months
(Maternity Leave cover) 40 hours per week
Start Date – 17th October 2022
Ohakune based



Our Finance team are currently on the lookout for a Business Administrator with Accounts Payable experience to cover Maternity Leave from 17th October 2022 through to 14th July 2023.

The purpose of this position is to:

- Assist with the day-to-day business administration and support functions.
- Coordinate and support the delivery of effective accounts payable activities.
- Ensure the effective and timely delivery of customer services/reception/front of house duties
- Provide accurate and timely administrative support to the CEO as required.
- Assist the CEO as requested on project specific initiatives.

The successful applicant will have:

- Demonstrated knowledge and skills in Business Administration and support.
- A breadth of experience in Accounts Payable.
- Intermediate / advanced computer literacy skills - Microsoft office packages.
- Demonstrated communication skills, verbal and written.

You will bring a professional approach to the role, including the ability to maintain confidentiality

If you would like to discuss the role further please email andrea@atihau.com

Atihau offers a competitive remuneration and benefits package reflective of skills and experience. Training will be provided to the successful applicant.

Atihau takes its health and safety obligations seriously ensuring a safe and drug free workplace. The successful applicant will be required to undergo a pre-employment drug test prior to commencement and also be required to comply with Atihau's pandemic policy.

Please email your CV and a cover letter detailing your experience in confidence to andrea@atihau.com

Applications will remain open until position filled

Rare rugby feat for Gabriel Hakaraia

Ruapehu rugby player Gabriel Hakaraia, playing for Taihape this season, achieved an extraordinary feat in the Whanganui premier competition this year. A front row forward, Hakaraia was the leading try scorer, with 13, in the competition this year. Leading try scorers usually come from the backs, and generally from the wings, not from tight forwards.

Hakaraia said he never expected to top the try scoring list. He notched four of his tries in one game, against Ngamatapouri. His try scoring exploits speak well of his mobility and strength.

Whanganui selector Marty McGrath noted that Gabriel carried the ball well and was “Johnny on the spot” a lot.

A qualified builder, Gabriel’s rugby experiences include a brief stint of club play in Northern England.

He was selected for the New Zealand Heartland Under-19 team two years in a row – 2016-17.

At the age of 25, he may still have his best rugby ahead of him. He has been on the Whanganui scene for many years, having gone from College to Premier rugby quickly.

He switched from Ruapehu Club to Taihape this season, being able to play at prop or hooker, making the change



Gabriel Hakaraia, top try scorer. Photo: Merrilyn George. so he could stay in the premier competition, after Ruapehu was unable to assemble a premiers team. However, he indicated that he would return to Ruapehu if it fielded a premier team next year. He said he was looking forward to playing for Whanganui this season. *With acknowledgements to River-city Press.*

Rugby Under 8s undefeated

Ruapehu 2 Under 8s team had a massive start to their rugby careers, with most of them first-year tacklers, the promising young team week after week took out the opposition. There has been some strong under 8 teams in the whole comp, but Rua 2 managed to hold on to the wins. The closest game was with the other Ruapehu U8s team Rua 1, friends who train together quickly became rivals and neither side wanted to lose and it was a tie in the end.

“It’s been a healthy mix between having fun, experiencing physical pain and keeping competitive, which is the reality of rugby,” says coach Josh. “The physicality of the games had me on edge for the kids, because in this grade you’re not a stickler for rules. It’s an introduction to the game, so it’s raw, it’s hard and there were a lot of tears but they never gave up, and I’m super proud of them,” says one proud mother. They’ve grown so much this year, they’ve come out of their shells as individuals and gained confidence as



Ruapehu's Under-8s teams, Rua 1 in white and competition winners Rua 2, in green and blue, with their coaches Josh and George standing proud with their teams. Absent: Kiriana, Ocean, Eli. a team, each person contributing to the team’s success, says Pieta Gilbert from the Club. She said the Club thanks their volunteers, the team behind the scenes have been outstanding this year. “All that mahi they put in trickles down to the volunteer coaches and parents, it’s a win-win situation because our kids benefit from it. So big ups to Ruapehu Junior Rugby.”

stronger together...



NZR Central have recently broken the tradition of real estate in the area by deciding to join as a team.

The philosophy behind this is that by sharing all listings and commissions equally and working collaboratively, every NZR customer and client has the benefit of knowing that they have the entire sales team working as one on their behalf to ensure a positive and successful outcome is achieved.

Combining our individual experience, knowledge and skill set as well as true open communication between each member of the team, gives us that extra edge over other agencies and gives our clients and customers the certainty that nothing else stands in our way of ensuring they are provided with the best experience that they deserve.

With already proven sales success we pride ourselves on our honesty and integrity which is evidenced by the testimonials received.

We would love for you to join us and see what we can all achieve together!

Polly Ingles 027 315 8368 polly@nzs.nz	Kath Campbell 027 333 4381 kath@nzs.nz	Jenna Hovelle 027 361 0167 jenna@nzs.nz
---	---	--

