

Ruapehu Autumn BULLETIN

Priceless newspaper
Autumn 2022



Your guide to Ruapehu in Autumn

Jacob Oxford and Frankie Shaw showing off their dance moves on the track between Oturere Hut to Waihohonu Hut, which is gently undulated over wide open gravel fields and a number of dried up stream valleys. "Any large boulder we came across, had to be scaled," says Jacob's mother Tasha, of their recent Tongariro Northern Circuit adventure.

BRING IN THE EXPERTS THIS
AUTUMN

Seasonal change demands the Bayleys edge

While the autumn winds have brought change to our national housing market, demand factors persist this season, and Bayleys experts are determined to deliver results, using our unique blend of insights, international networks and innovative marketing tools to give your property the edge this autumn.

Bayleys Ruapehu 06 385 0170

16 Goldfinch Street, Ohakune

LICENSED UNDER THE REA ACT 2008

BAYLEYS

ALTOGETHER BETTER

Residential / Commercial / Rural / Property Services

Chasing Ruapehu waterfalls



Mother and daughter enjoy a moment at the Kaiwhakauka Falls near Retaruke.

That crisp mountain air, fallen leaves of golden yellow and red, and the sight of fresh snowy mountain peaks – autumn in Ruapehu is all a bit enchanting really.

And what better way to explore #OurGreaterOutdoors than a walk in the woods to chase waterfalls? From short, easy walks to full day hikes, there's a wonderful world of waterfalls to discover in Ruapehu every day of the week that everyone can enjoy.

Taranaki Falls

This 6km, 2-hour easy walking track is one of Tongariro National Park's best short walks. Spectacular views of Mt Ngāuruhoe and Mt Tongariro are visible on a clear day as you traverse alpine shrublands, mountain beech forest and ancient lava flow. Cascading 20 metres

down to picturesque pools, Taranaki Falls is breath-taking to behold and definitely one to put on your bucket list.

Mangawhero Falls

Located a short drive up Ohakune Mountain Road, the 28-metre Mangawhero Falls is a short walk to beautiful waterfalls close to the road so very easy to access.

Tupapakurua Falls

Tucked away near National Park Village, Tupapakurua Falls is a spectacular hidden gem for those keen on a more challenging hike. This 11km journey via the return track is located in the Erua Forest Conservation Area with stunning views of Mt Taranaki and Mt Ruapehu.

Turn to Page 5

Kune Shuttles & Bike Hire

ADVENTURE TRANSPORT – OHAKUNE

BIKE HIRE & EXPLORE

- Mangaurua - Bridge to Nowhere
- Old Coach Road
- Ohakune Mountain Road & Tūroa Ski Area
- General Shuttles and Private Hire



022 583 1292

info@kuneshuttles.co.nz

www.kuneshuttles.co.nz

'Tramping on wheels' a growing Ruapehu attraction

Ruapehu has two of the best cycle trails in New Zealand's Great Rides network, says Lynley Twyman, 'trail champion' for both the Mountains to Sea Ngā Ara Tūhono Cycleway and The Timber Trail.

"The Mountains to Sea trail is the most diverse ride in the country, and the Timber Trail (through the Pureora Forest) is arguably the best 2-day ride in New Zealand," says Lynley.

The growth is contributing to the local economy year-round and is increasing.

Estimates put the Timber Trail's economic benefit to Ruapehu and neighbouring Waitomo at \$7.6 million last year.

The Ohakune Old Coach Road – part of the Mountains to Sea – saw 19,000 trips, with 59,000 trips on the M2Sea trail overall.

And demand is increasing on **Turn to Page 7**



The mountain biking pioneers, the Kennett Brothers, rode the Mangapurua Track to the Bridge to Nowhere recently, impressed with the improvements made at Battleship Bluff since their 1988 ride (inset).

60 Thames St
Ohakune
T: 06 385 8797
www.stationlodge.co.nz

DINOSAURS
DISCOVERED IN RAETIHI!

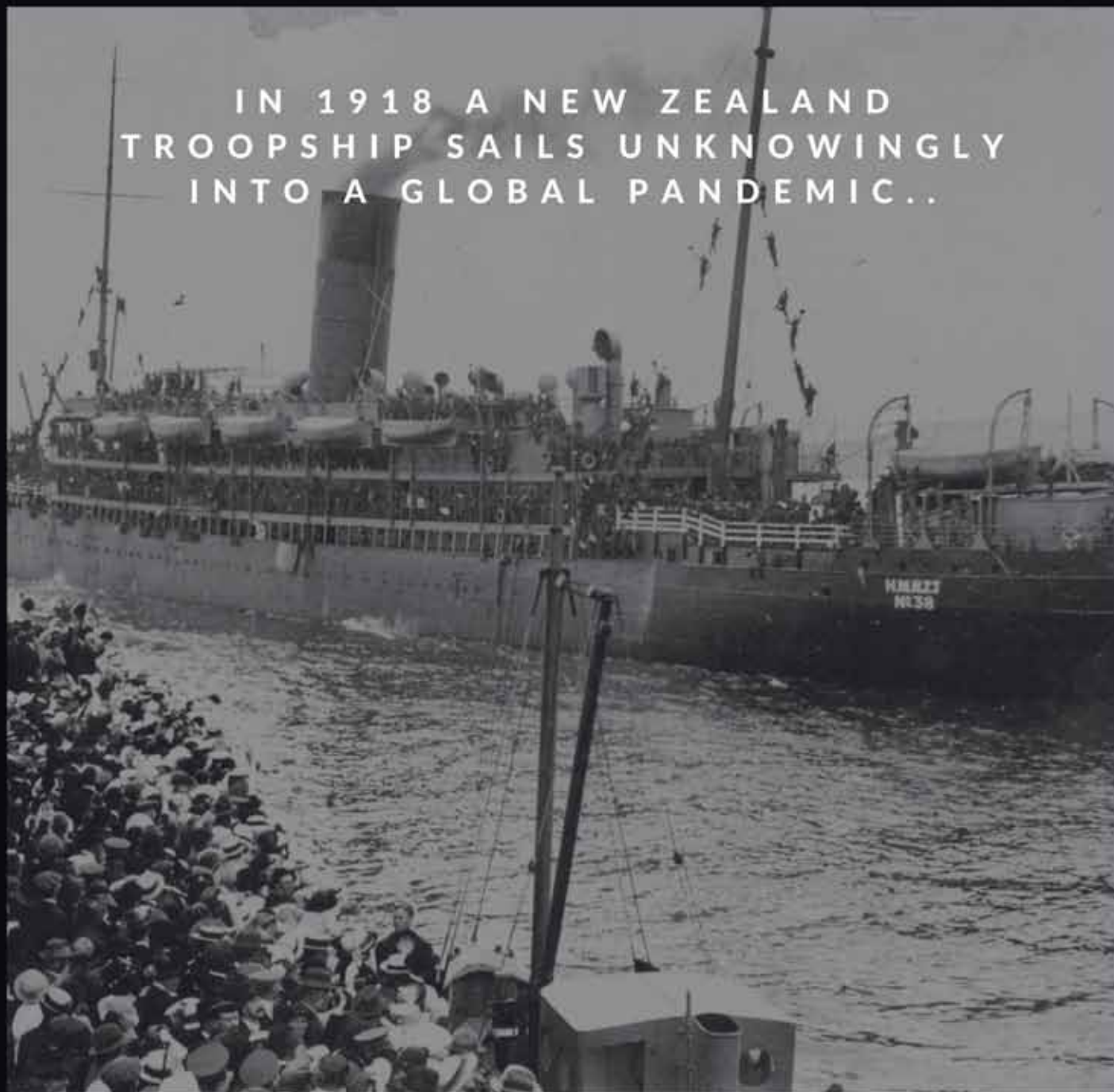
LIFE SIZE DINOSAURS
SKELETONS
DOCUMENTARIES
VIDEO GAMES
DINO DIG

TUE - FRI
10AM - 4PM

SAT - SUN
10AM - 5PM

102 SEDDON ST
RAETIHI
(06) 3853344
www.dinosaurhouse.co.nz
10 MINUTES DRIVE FROM OHAKUNE

IN 1918 A NEW ZEALAND
TROOPSHIP SAILS UNKNOWINGLY
INTO A GLOBAL PANDEMIC..



WHAT WAS THEIR **FATE**

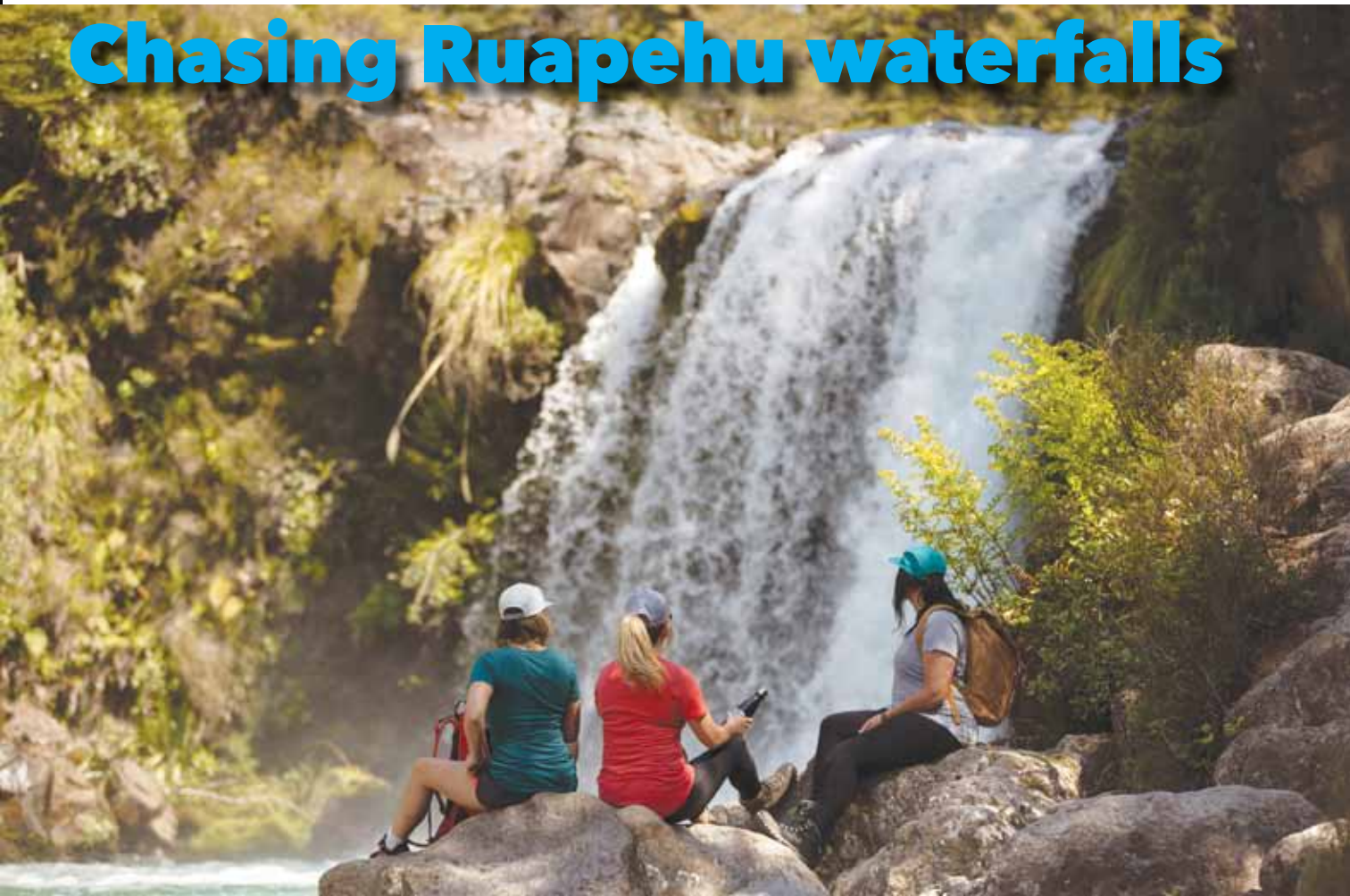
KIDS HQ | THE MESS TENT | GUIDED TOURS |
THE QUARTERMASTER STORE | RESEARCH CENTRE

OPEN 7 DAYS | STATE HIGHWAY ONE, WAIOURU

NATIONAL
ARMY
MUSEUM
TE MATA TOA



Chasing Ruapehu waterfalls



Taihwai Falls, one of the sites that was used as Gollum's Pool in the Lord of the Rings trilogy.

From Page 2 Waitonga Falls

Cascading down 39 metres, Waitonga Falls is Tongariro National Park's highest waterfall and is a must-see for waterfall enthusiasts. Accessible via a 4km easy and well-formed return track, you'll enjoy incredible views of Mt Ruapehu, especially from the Rotokawa pools alpine wetland area.

Tawhai Falls

Also known as Gollum's Pool from the Lord of the Rings trilogy, the beautiful Tawhai Falls is an easy 20-minute return short walk located

along State Highway 48 past National Park Village. This family friendly walk is one the kids will remember so get those cameras ready.

Kaiwhakauka Falls

Located deep in the heart of Blue Duck Station in Retaruke, Kaiwhakauka Falls is a three-hour return hike via the same track. This relatively flat walk takes about three hours to complete but is often muddy so appropriate footwear is recommended. Keep an eye out for whio (blue duck) along the way.

For more ideas and inspiration, visit www.visitruapehu.com

Looking for the perfect place to stay and play in the Ruapehu region?

With us, you can be sure you will find the perfect size,
style and location of accommodation to suit your needs.

RUAPEHU CHALET RENTALS

Locally owned and operated Email: info@ruapehu.co.nz Ph: 06-385-8149

WWW.RUAPEHU.CO.NZ





SITE



We're here for you too!

Ruapehu's i-SITES are here for locals as well as visitors.

Did you know that we can book your travel ... Intercity buses, Interislander ferries, trains, accommodation, SkyWaka gondola tickets, activities and more!

And we sell giftware!

If you're looking for gifts, you'll be amazed at what we have available ... and not just souvenirs!



▶ 0800 647 483

Come in and talk to us!

Ohakune

54 Clyde Street

E: ohakune.isite@ruapehudc.govt.nz

8.00am – 5.00pm, 7 days

Taumarunui

Railway Station, 116 Hakiha Street

E: taumarunui.isite@ruapehudc.govt.nz

8.30am – 4.30pm, 7 days

Whakapapa

State Highway 48

E: whakapapa.isite@ruapehudc.govt.nz

8.00am – 4.30pm, 7 days

Ohakune i-SITE are now 8.00-5.00 and Taumarunui 8.30-4.30. Whakapapa is 8.00-4.30 too

'Tramping on wheels' in Ruapehu

From Page 3

the Mangapurura section of the trail.

She said there are benefits all round from this 'tramping on wheels', not just economic – including social connections, increased environmental awareness and action (such as accessing pest trap lines for volunteers).

"It's taking people back to nature."

She said the Mountains to Sea trail has overall been the "poor cousin" in the Great Rides network for a number of reasons, but this is improving.

In recent months, as well as maintenance work, new signage has been installed for safety and riders' enjoyment, and a safer crossing installed at Horopito.

"The trail is now at a standard that we can promote it.

"The Mangapurua is a much safer ride, with DOC's support."

Maintenance is also improved on the Timber Trail with a new contractor signed up.

She said they use local staff for emergency works, which is helpful as a call such as for a tree fallen across the track "always happens on a Friday".

The next stage – Te Ara Mangawhero – is due to start this summer, with the lower sections starting first.

"It's going to add huge value to the trail.

"It's not a downhill bombing trail (as some people have feared) – it will be getting people out into the ecology.

"We're really quite excited for the area."

The local council says the cycle trails have helped the area's economic growth, investment and employment – walking and cycling have helped offset the economic and social impacts of Covid 19.



'Tramping on wheels,' in Ruapehu. Photo: Visit Ruapehu.

applied innovation



engineers | surveyors | planners

Ph: +64 6 385 9534

Taupo | Taumarunui | Ohakune | Napier | Hamilton | Rotorua

cheal



YOUR PLACE IN THE WORLD

Share your Ruapehu photos using [#OurGreaterOutdoors](#)

Check out www.visitruapehu.com for more information about the region.

Riverside disc golf tees off

Ruapehu now has a disc golf course, after project leader James Bell installed the remaining baskets in the reserve area alongside Mangawhero Terrace Extension in Ohakune.

“This will hopefully be a place where visitors and locals, kids and the young at heart, can play together in a game that is as challenging as they choose it to be,” says James.

He said the project – in the domain amongst the trees “where the piwakawaka play” – was in memory of his mother Penny, who was a “lover of birds and all precious things at play”.

“She taught me you can’t touch the sky unless you aim for it.”

James says they have set out the course to be accessible to a range of players, with 15-metre holes for kids, up to 120m for expert players.

“It’s the most accessible disc golf course in New Zealand and will be the only one playable at night.”

He plans to instal solar lights on the baskets and the tees, for night-time play in winter, with glow-in-the-dark discs.

“I hope you enjoy your new disc golf course, as it will continue to refine like a good wine with tendering and time.”

He said the project has had support from several local businesses: Big Mountain Mead, TCB, Kings, Powderhorn Chateau, Ohakune Hot Pools, Strange Dog,



ABOVE: playing a round at Ohakune’s new disc golf.



RIGHT: James Bell puts the finishing touches to one of the disc golf baskets.

Pacesetter Printing, Ohakune Top 10, Ohakune Carrot Park Trust, Station Lodge and Ohakune Incorporated.

Course layout and score cards are available from #udisc.



thegym
Ohakune

FITNESS CLASSES
PERSONAL TRAINING
GYM ACCESS 4AM-10PM - 7 DAYS

SPECIALS AVAILABLE*
*conditions apply

18 Ayr St, Ohakune 022 329 9201
www.thegymohakune.co.nz



36 Old Station Road, Ohakune

SECONDHAND STORE & RECYCLE CENTRE

Household goods, clothing kitchenware, furniture, construction items & more.

www.ethicalwaste.co.nz
@ethicalwastenz



Garden Mulch \$40 cubic meter



FOLLOW US ON SOCIAL MEDIA

@ETHICALWASTENZ
@ETHICAL.WASTE

Mountain menu

From Page 11

well, if not ahead of schedule for winter 2022.

On Tūroa, the bulk of the work has been in annual servicing of lifts, ensuring their safety and reliability. This involves scaling every tower on the ski area – about 80 in total. More staff (up to 17 this summer) and better planning has seen the team ahead of plan.

Chairs will start to be loaded this week, starting with the Parklane and Movenpick. The High Noon Express is the biggest undertaking by far, with so many more mechanical components. It takes the team up to six weeks to complete the annual service.

They are 80% there already though. In terms of the team's drive, Head of Maintenance at Tūroa, Gaz Bradnam, says "The team know they need a good season, they know they need to be successful. They want to see the smiles on the faces of those who visit Tūroa."

On Whakapapa, the team recently completed the mammoth task of replacing the bull wheel bearing on the West Ridge Quad, a task only required every 15-20 years. Accessing the Quad, 2075m above sea level, meant helicoptering in scaffolding, parts, and safety equipment. From there, safety precautions were put in place, the bull wheel effectively split in half through tensioning on ropes, allowing the maintenance crew and specialists from Doppelmayr to replace the components, before reassembling.

The project required weeks of planning, assessing, and executing.

"Nothing is diminutive; everything is enormous. However, it is necessary to ensure everyone's safety. And that is precisely what we do," said Brad Phillips, head of maintenance at Whakapapa.

"We have since seen chairs fitted on both the Double Happy and West Ridge Quad, with the Delta not far away."



Photo by Glyn Hubbard



Thinking of building?

Contact Maurice on 021-2801780

www.mnmdesign.co.nz

On the mountain gondola menu

The Whakapapa Sky Waka will be open every day through to 1 May (weather dependent), for sightseeing and access to the upper slopes where there are some short walks that visitors can enjoy.

From Friday 8 April, the Knoll Ridge Café will have their lunch buffet available.

For Easter (15-18 April) the Café will be adding a breakfast buffet and the Sky Waka will open an hour earlier at 9am and breakfast will run from 9:30am – 10:45am. Bookings are strongly recommended and vaccine passes are no longer required.

There are three walks on Whakapapa that have been marked by the ski area team.

Waterfalls Decent: walk a path over ancient lava flows and lahars from the top of the Sky Waka Gondola, past stunning waterfalls, rugged volcanic terrain, and incredible views of the Central Plateau. Duration: 1-2 hours (descent).

Skyline Walk: described as one of the best short walks in the Tongariro National Park, the Skyline Walk takes you from the top of the Sky Waka gondola (2020m) to the Skyline Ridge (2300m), with views out to Mt Ngauruhoe, Lake Taupō, and beyond. Duration: 1.5-2.5 hours (return)

Meads Wall: the Meads Wall is a short ten-minute walk from the bottom of the Rangatira Chairlift at the Whakapapa ski field. It leads to a Lord of the Rings movie location as well as some spectacular rock climbing. Duration: 20 minutes (return)

Snowmaking on Whakapapa

On Monday RAL started their snowmaking efforts in Whakapapa's Happy Valley, a month earlier than previous years. The Snow Factory, used exclusively in Happy Valley, is one of a kind in New Zealand. It has capacity to produce up to 200 cubic metres of snow a day and as an all-weather system, will continue to run 24/7 in the lead up to winter.

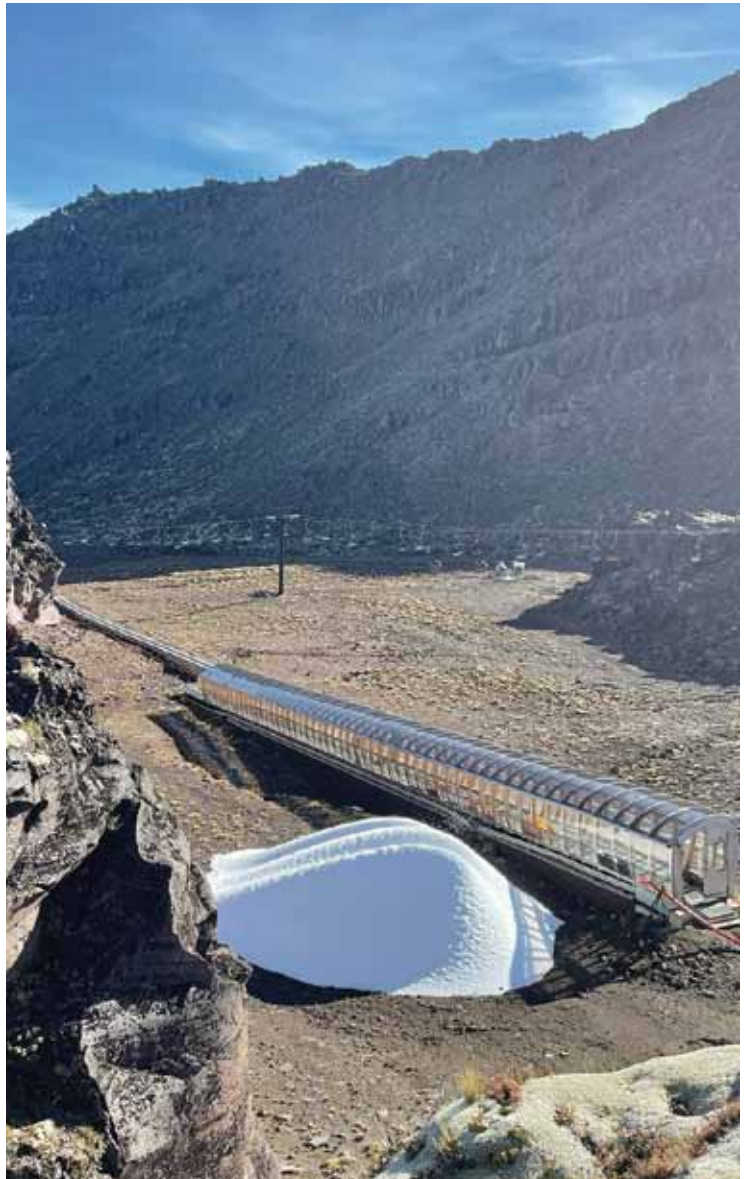
“Starting our snowmaking efforts early, working in piles of snow, and utilising thermal blankets in the coming weeks, will help support snow coverage and protection from weather and warmer temperatures,” says RAL.

“By mid-April we expect have a two metre snow coverage across the sledding area before turning our attention to the rest of Happy Valley to support skiing and riding. Happy Valley opens 3 June.”

Maintenance updates

The RAL maintenance and operations teams are progressing

Turn to Page 10



Whakapapa's snow factory is already in action, helping prepare a base for the Happy Valley ski area for June.

DISCOVER RUAPEHU RAIL TOURS – 3 DAY PACKAGES



SITE

RUAPEHU
OUR GREATER OUTDOORS

FIND BEAUTY, DISCOVER ADVENTURE, IMMERSE IN HERITAGE



TRAVEL FROM AUCKLAND or HAMILTON to TAUMARUNUI, NATIONAL PARK and OHAKUNE BY HERITAGE TRAIN

If you have friends or family visiting Ruapehu that might be interested in one of the 3 day/2 night packages or train only options – journeys on 13 May and 10 June

Contact us at Ruapehu i-SITE's on 0800 647483 to book.

NEED A PLUMBER/ DRAINLAYER?



ZEALTEKTM

PLUMBING AND DRAINAGE

We service the Central Plateau 24/7,
from Ohakune to Tokoroa.

Proudly offering a full range of residential and rural plumbing
and drainage services: new builds, maintenance and servicing.

- Eco / Bio Waste Water Treatment Plants
 - Septic Tanks • Stormwater Drainage
 - Effluent Trenches • Effluent Fields
 - Soak Holes • Soak Pits • Offal Holes
- Digger • Bobcat • Auger – Services and Hire
- Block Drains • Industrial Drain Cleaning Machine
- Fire Installation • Chimney Sweeping



Contact us at: **0800 ZEALTEK** info@zealtek.co.nz
0800 932 5835 www.zealtek.co.nz

Passionate about your project



Ohakune 100A Goldfinch Street

Vendor wants action

556_{sqm} 3 1

Forget all previous prices. This immaculate, near-new home tucked away on popular Goldfinch Street is sure to appeal. Family living revolves around the centrally placed kitchen/dining area which flows seamlessly onto the large private deck.

Don't delay, call now to arrange a viewing.

bayleys.co.nz/2900455

For Sale by Deadline Private Treaty (unless sold prior)
4pm, Wed 13 Apr 2022
Jenny Dekker 027 455 5674
jenny.dekker@bayleys.co.nz
BARTLEY REAL ESTATE LTD, BAYLEYS, LICENSED UNDER THE REA ACT 2008



Ohakune 4/39 Railway Row

Rural views on Railway Row

288_{sqm} 3 2

If you've been looking for a stylish, modern, low-maintenance property on popular Railway Row, then this is worth a look. This three-bedroom, two-bathroom apartment is functional, warm and would be an ideal first home, holiday home or base for the semi-retired couple.

Call now to view this peaceful property.

bayleys.co.nz/2900470

Asking Price \$629,000
Jenny Dekker 027 455 5674
jenny.dekker@bayleys.co.nz
BARTLEY REAL ESTATE LTD, BAYLEYS, LICENSED UNDER THE REA ACT 2008



Ohakune 9B Park Avenue

Classic alpine escape

Your search for the perfect holiday haven is over! Built in the 1980s, this endearing Lockwood designed chalet has stood the test of time as a functional, low maintenance ski holiday home. Step into this wonderful, fully furnished A-frame chalet and you will be impressed with the warm, inviting timber interior and tranquil location. The open concept dining and living area opens out to a small sunny deck with a spa pool, great for entertaining during the long summer days, or enjoying a warm soak after a day in the great outdoors.

This chalet is a must see. Call today for more information.

bayleys.co.nz/2900452

3 1

Asking Price \$559,000
Jenny Dekker 027 455 5674
jenny.dekker@bayleys.co.nz
BARTLEY REAL ESTATE LTD, BAYLEYS, LICENSED REAA 2008

Combining forces to help preserve the Tongariro National Park

Every action is not without consequence, but it is how you mitigate the impact of this consequence that truly matters, says Janelle Hinch from Opus Fresh.

“The sacred beauty of the Tongariro National Park is quite clearly felt by those the world over. As kaitiaki of this special place, it is our responsibility to do all we can to preserve this sacred land,” says Janelle.

She adds that the foundations of Opus Fresh are built on this ethos and so “we could not be more proud to introduce our latest collabora-



Peter Woodhead prepares tussock plants for the ski area restoration project. Photo: Andy Hoyle.

tion with Ruapehu Alpine Lifts on their Tussock Replanting Project”.

Historically, the ski area has set out to replant areas that may have experienced disruption to the soil or earth during construction, notably after the upgrade to the Happy Valley facility, which saw thousands of tussocks replanted over the following 10 years.

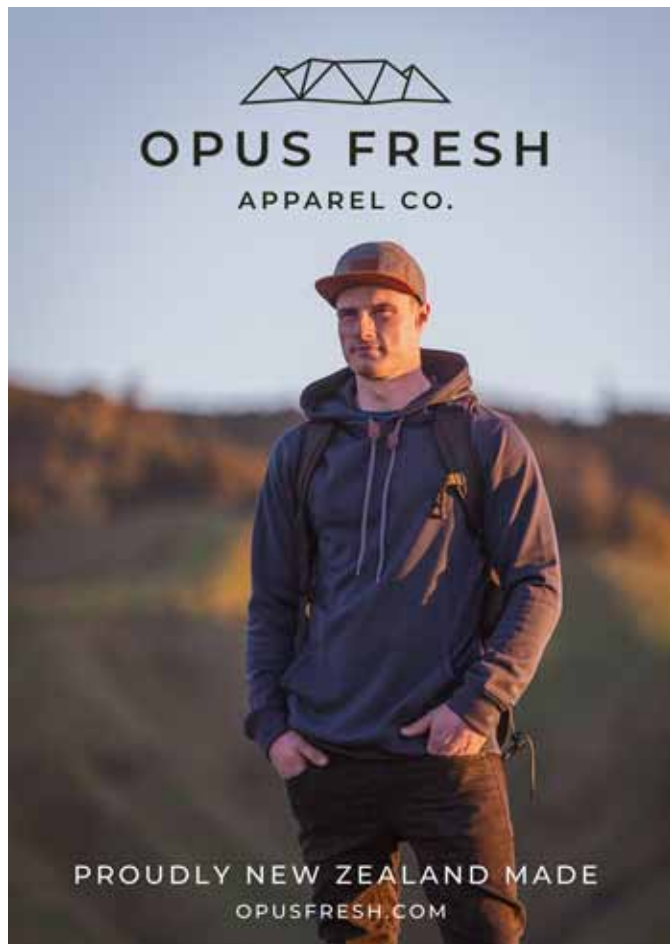
“These efforts are clearly visible when visiting the valley as colonies of bristle tussock are now well established, ensuring the delicate ecosystem is given every opportunity to thrive in what is an incredibly harsh environment.”

So where to next?

As the construction of the Sky Waka Gondola saw this project come back into the forefront once again, with 200 plants replanted in the same area they were uplifted from last summer, it was time to decide on some more permanent goals. With seeds being gathered during the summer months, RAL has the goal of planting another 1000 plants this summer with the ultimate goal over time of replanting 10,000 plants in each ski area, each summer.

“This momentous task isn’t without its challenges, but this goal is right up Opus Fresh’s ally so that is why every Opus Fresh X Mt Ruapehu garment purchased from Mt Ruapehu retail stores will sponsor the planting of one tussock,” says Janelle.

“This collab is a triple treat because not only do you get to do your part to preserve the incredible Tongariro National Park, you end up taking home some rad Opus Fresh gear and support New Zealand made all at the same time.”



Architectural Design

YOUR HOME
FOR
HOW YOU LIVE YOUR LIFE

www.r-design.co.nz

027 673 0408 | design@richardmilne.com



Passenger rail back on the agenda

By Patrick Rooney, Save our Trains

Many communities in Ruapehu District are rail towns at heart. The development of towns like Ohakune and Taumarunui followed the development of the railway.

New Zealanders who have travelled overseas are often surprised by the quality and convenience of passenger rail in many countries. As the climate crisis worsens, and the need for cost effective, low emission transport options becomes pressing, rail is going through an international renaissance. Apart from in New Zealand, unfortunately.

Late last year, KiwiRail announced the end of same-day passenger services between Auckland and Wellington, and Picton and Christchurch. The initial plan is to introduce a multi-day rail cruise instead, aimed at well-off tourists.

End of the line

This means the end of most of New Zealand's long-distance passenger rail network after more than 100 years.

Despite the profusion of reports urging the need to lower carbon emissions and invest in regional development, the Government appears locked into a model of big city roads and air travel.

If trains are fast, affordable, and comfortable, people will use them. We need to give tourists and people in regional towns an affordable option to travel on a modern passenger rail service.

More recently, rising fuel costs have focused our attention on the need to build a resilient transport system. Rail is ideally suited to



Trains need to be part of the climate crisis solution, says Save Our Trains.

reduce our dependence on overseas energy.

The Government has so far passed the parcel on dealing with the issue of long-distance passenger rail and has described the matter as an “operational” one for KiwiRail. This is a nonsense. Passenger rail should be a policy issue. Leadership is required and it needs to be coming from the top.

Earlier this year, the Save Our Trains campaign was formed. We are calling on the Government and KiwiRail to commit to maintaining existing long distance passenger rail services. Our campaign has groups springing up in communities around New Zealand and has received national coverage for our cause. Our petition has 8000 signatures and is growing.

We want to see a comprehensive national strategy for future passenger rail services built around concerns for climate action, accessibility, and regional economic development.

We are ambitious for passenger rail and want to see regular services in both islands. We're not against tourist rail – this should be a part of the mix too. But it must not be at the expense of affordable rail transport for general travellers.

Passenger trains could once again make stops throughout the Ruapehu District – and provide a low-emission, convenient and enjoyable transport option for travellers and locals alike.

Save Our Trains online petition is at <https://www.allrailways.co.nz/petition.html>

SAVE OUR TRAINS
SIGN THE PETITION BY QR CODE

QR CODE
SCAN ME

WHAT IS THE ISSUE?

KiwiRail announced the suspension of scheduled passenger trains to Ruapehu District in late 2021. This comes at a time when fuel prices are rising, the climate is warming, and regional New Zealand is crying out for economic development. It makes no sense.

Join the campaign to Save Our Trains. www.allrailways.co.nz

Authorised by: Patrick Rooney, 19 Ti Kouka Place, Ohakune

4 reasons to choose NZR



1

Global buyers

NZR are able to successfully reach and find buyers globally via their marketing tools.

2

Free standard marketing

This means **no charge** for:

- Online advertising
- Signage
- Window displays
- Professional photography
- 3D tours (3D floor plans and virtual walkthrough)

3

Local agents

NZR's agents all live locally and understand the current market trends to ensure you achieve the maximum sale price possible.

4

Competitive fees

NZR's commission fees are competitive and until we have achieved a successful sale, you don't have any upfront costs.

This all means you'll receive a truly comprehensive package giving you great value when selling your home.

the nvr marketplace



...working together for our vendors' benefit

Ohakune

1 Goldfinch St, Ohakune 📞 06 385 4466

Feilding

20 Kimbolton Rd, Feilding 📞 027 739 1011

Palmerston North

209 Broadway Ave 📞 027 739 1011

Wairarapa

16 Perry St, Masterton 📞 027 362 0716

Hawke's Bay

6 Ossian St, Napier 📞 027 362 0716

Gisborne

79 Gaddums Hill Road 📞 027 739 1011

...we've got you covered



NZR Central Limited | Licensed REAA 2008

Waipahu Autumn Bulletin April 2022

Get the  **Matterport™** advantage with NZR



By enabling our sellers to see their properties in 3D, we stand out from the competition and provide an immersive experience that is not possible with photos or 360 tours.

With a 3D virtual tour, buyers can do their own walkthrough of your properties from anywhere and at anytime.

Contact us for your free no-obligation appraisal now

1 Goldfinch Street, Ohakune | 06 385 4466 | nzs.nz

NZR Central Limited | Licensed REAA 2008



the **nzs** team...

...stronger together.

NZR Central have recently broken the tradition of real estate in the area by deciding to join as a team.

The philosophy behind this is that by sharing all listings and commissions equally and working collaboratively, every NZR customer and client has the benefit of knowing that they have the entire sales team working as one on their behalf to ensure a positive and successful outcome is achieved.

Combining our individual experience, knowledge and skill set as well as true open communication between each member of the team, gives us that extra edge over other agencies and gives our clients and customers the certainty that nothing else stands in our way of ensuring they are provided with the best experience that they deserve.

With already proven sales success we pride ourselves on our honesty and integrity which is evidenced by the testimonials received.

We would love for you to join us and see what we can all achieve together!



Polly Ingles
027 315 8368
polly@nzs.nz

Kath Campbell
027 333 4381
kath@nzs.nz

Jenna Hovelle
027 361 0167
jenna@nzs.nz

NZR Central Limited | Licensed REAA 2008

Ohakune Lodge's new owners loving small town life

Ohakune's LKNZ lodge has new owners and they're loving life in the mountain tourist town.

Carrie and Oliver Rutland purchased the LKNZ lodge and took over at the end of May 2021, moving their family from Auckland to experience small-town life and enjoy the wonders of Mt Ruapehu.

Their three children attend school in Ohakune and participated in the local ski club, TASCI, last winter.

The family enjoyed swimming at the Ruatiti Domain, hiking the various local trails, and cycling most notably the Ohakune Old Coach Road this summer and are anxiously awaiting another winter to master their skiing.

Visitors can often find Katie (13), Tristan (11), and Grace (5) helping at the Lodge on the weekends. Katie and Tristan much prefer cleaning at the Lodge than their own bedrooms and Grace is the star greeter in the cafe, says Carrie and Oliver.

Carrie, a Canadian, grew up on Vancouver Island and was involved with her family's motel, Black Bear Lodge. Well-travelled herself, Carrie enjoys meeting new people and hearing about their travel experiences.

As the new owner of LKNZ Lodge & Cafe, Carrie is passionate about meeting locals and seeing familiar faces in the Cafe; talking to travellers from all over



Wednesday's crew at the LKNZ cafe, from left, Crystal Tiseli, Keri-Ann Tuatini, Maria Luz Martinez, Bridgette Pitman, Carrie Rutland, and Lisa Schloeder.

the world; and providing guests a memorable holiday in Ohakune.

The entire LKNZ team is equally passionate about living and adventuring in the Mt Ruapehu

region. LKNZ stands for Local Knowledge New Zealand and the team prides itself on being able to offer guests the best tips and tricks for enjoying the area to its fullest.

"Stop into the cafe or plan your next holiday at LKNZ Lodge and Cafe, we can't wait to meet you!" invites Carrie and Oliver Rutland.



LKNZ Lodge & Cafe

Comfortable accommodation for families, couples, solos and groups ready for adventure in Ohakune! Cafe open daily for eat in or takeaway. Hot tubs & sauna open to all - contact us to book.

www.lknz.co.nz

Phone 027 257 LKNZ (5569)

1 Rata Street, Ohakune



TCB

SKI BOARD BIKE

YOUR BIKING ADVENTURES STARTS HERE!!

- *MOUNTAIN BIKE RENTAL
- *ELECTRIC BIKE RENTAL
- *BIKE RETAIL
- *BIKE WORKSHOP
- *OLD COACH ROAD TRANSPORT

RENTAL RATES

	FULL DAY	HALF DAY	MULTI DAY
Full suspension E bike	160	100	130
Full suspension mountain bike	100	60	80
27" & 29" Front suspension disc brake mountain bikes	ADULT 60 STUDENT 50	40 30	50 40
24", 20", 16", 12" bikes	CHILD 40	20	30

Kids seat \$20/day *Clip on Bike \$20/day * Shotgun seat \$20/day *Trailer \$20/day

TRANSPORT to the Horopito start point of the Ohakune Old Coach Road
Shuttle times: Winter 10am & 12pm. Summer 10am, 12pm & 2pm
\$15 per person (includes bike transportation)
Mountain road shuttles(Summer only) leave TCB at 11am and 1pm
\$25 per person (includes bike transportation)

FULL DAY	1/2 DAY	MULTI DAY
Pick up after 9am, return by 5pm.	Pick up after 9am and drop off by 1pm. Pick up after 1pm and return by 5pm. Pick up after 4pm return by 10am the following day.	Any full day use, after the first day or half day.

****SPECIAL DISCOUNTS APPLY FOR GROUP BOOKINGS****
(10 or more)
Be sure to check with TCB staff about local track conditions before heading off on your adventure!

BOOK ON LINE AT WWW.TCB.NZ OR PHONE 06 3858433

Ruapehu – the heart of



For more detailed trail guides and information head to mountainstosea.nz your local iSITE or local bike hire or accommodation provider.

Dotted lines are planned only.
 *Mountain locations are for visual reference only.

Great Rides!



Mountains to Sea
Ngā Ara Tūhono

OHAKUNE OLD COACH ROAD

GRADE
3

LENGTH
15 km

DURATION
2-4 hrs

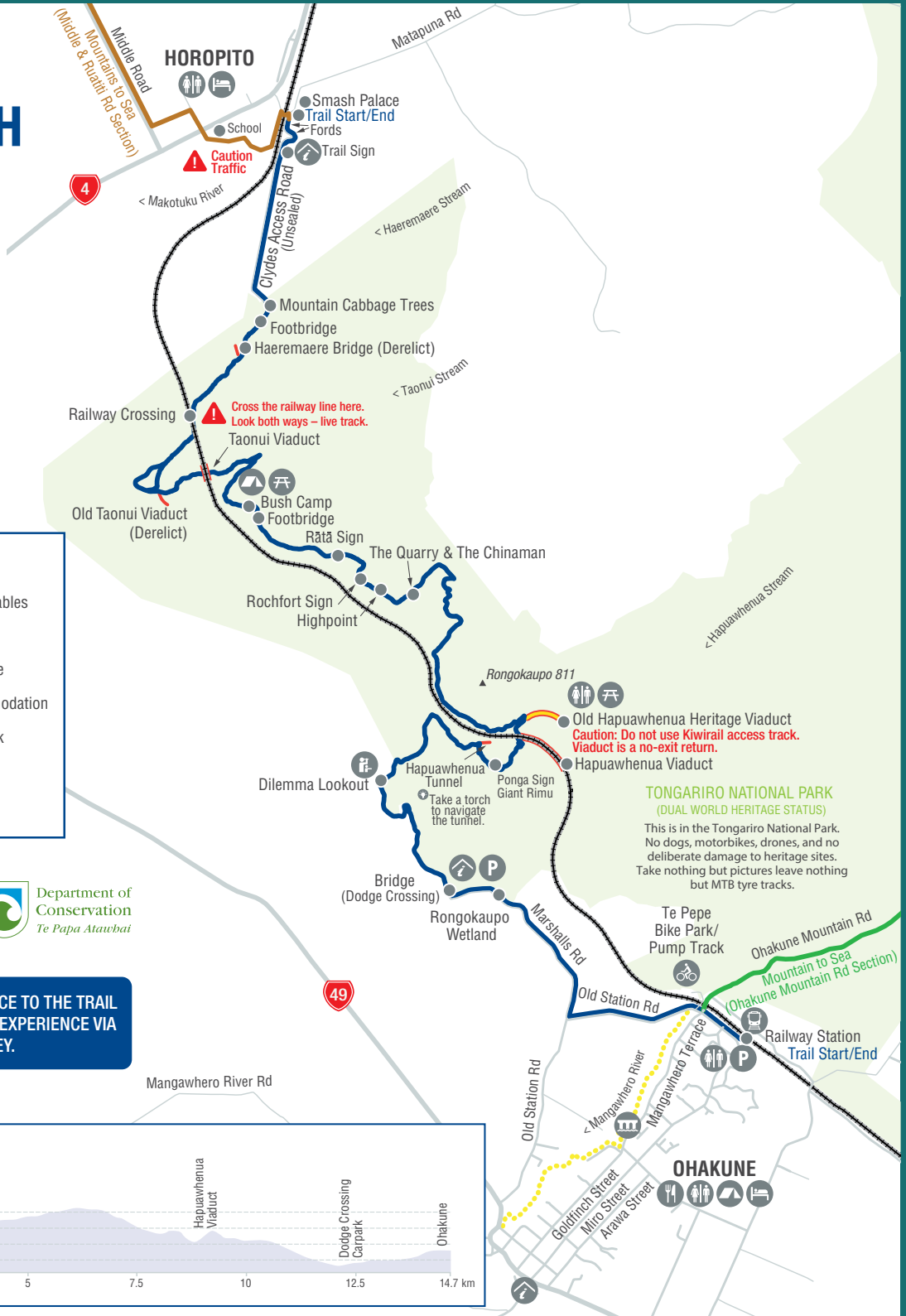
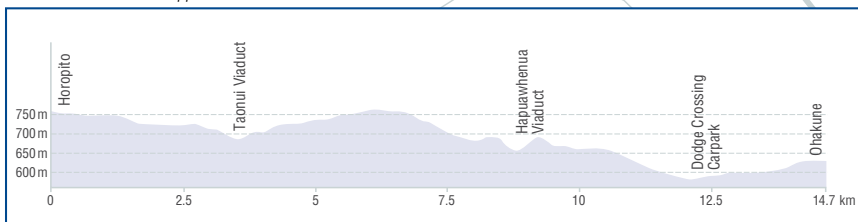
LEGEND

- Trail
- Road
- Information
- Toilets
- Lookout
- Bridge
- Food
- Picnic Tables
- Parking
- Campsite
- Accommodation
- Bike Park
- Train



MAKE A DIFFERENCE TO THE TRAIL
AND SHARE YOUR EXPERIENCE VIA
OUR SHORT SURVEY.

Not to scale. Distances are approximate.



TONGARIRO NATIONAL PARK
(DUAL WORLD HERITAGE STATUS)
This is in the Tongariro National Park. No dogs, motorbikes, drones, and no deliberate damage to heritage sites. Take nothing but pictures leave nothing but MTB tyre tracks.

Caution: Do not use Kivirail access track. Viaduct is a no-exit return.

Caution Traffic

Cross the railway line here. Look both ways – live track.

Caution: Do not use Kivirail access track. Viaduct is a no-exit return.

Whio thriving in Ruapehu area

With 10 years of partnership between Genesis and the Department of Conservation now in the bank, whio/blue duck are

thriving in the tributaries of the Whanganui River.

Once widespread throughout the country, whio/blue duck are

now limited to the less modified catchments of the Urewera, East Cape, central areas of the North Island, and the West Coast of the

South Island.

Predator trapping along the Retaruke and Manganui-o-te-a-o Rivers supports the Whanganui population. Recent surveys indicate the whio population is increasing in the Whanganui rohe and a census in 2021 counted 863 pairs nationally.

Community senior ranger Katy Newton says whio/blue duck are a taonga species found nowhere else in the world.

“They are rarer than some species of kiwi and are river specialists, living on fast-flowing tributaries to the Whanganui River.

“Having them in our streams and rivers is a key indicator of healthy rivers and streams – the more breeding pairs of whio the healthier the river.

“Their habitat has been reduced by the clearance of vegetation from stream and riverbanks, water diversions, poor water quality, and damming for hydro-electric and irrigation schemes.

“Additionally, recreational activities such as white-water rafting, kayaking, hunting and fishing, disturb whio families during breeding season.

“But the overwhelming good news is through sustained trapping efforts they are making a comeback.”

Katy says the DOC website has some fun whio educational resources. For more information visit www.doc.govt.nz/our-work/whio-forever/



One of three whio that have found new homes in the wild near Poutu Intake after their release last month, after they were building confidence at the hardening facility at Tongariro National Trout Centre. Staff there said two birds were ‘stand-outs’ as they “just didn’t want to get in the water” – “not wanting to swim is like not knowing how to be a duck!” But by the time they were released they “hit the water like pros”. Photo: T Swann/Pukaha.

ONSITE

DREAM DESIGN BUILD

DELIVERING SUPERIOR BUILDING SERVICES TO THE RUAPEHU REGION

onsitebuilders.co.nz / 027 285 5792

RUAPEHU SNOW BULLETIN

Published by
Ruapehu Media Ltd
(06) 385 8532

Home of Ruapehu’s only locally owned weekly community newspaper. Established 1983.

Publishing Editor: Robert Milne – robert@ruapehubulletin.co.nz
Advertising/Features: Jude Chevin – ads@ruapehubulletin.co.nz

\$1.92m for flocks of kākā and kererū at Pōkākā eco-sanctuary

The new 2700ha “inland island” sanctuary for native plants and animals at Pōkākā in the Ruapehu District was granted almost \$2m under the Government’s Mahi mō te Taiao/Jobs for Nature programme.

“The Pōkākā Eco-sanctuary is an ambitious project designed by Uenuku iwi as a way of generating sustained employment and revenue, while at the same time restoring a large tract of land, which includes the Erua Wetlands on the western side of the Tongariro National Park,” says Conservation Minister Kiri Allan.

The plan will see 14 people trained for the first phase of the eco-sanctuary development – removing introduced pest animals and plants – with two of the first-year trainee cadets progressing to become junior pest management/monitoring workers.

Possums, rats, mustelids (stoats, ferrets and weasels), feral cats, rabbits, goats and wasps, along with weeds such as barberry, broom, gorse, lupins, wilding pines and willow will be targeted.

A baseline environmental and cultural monitoring programme will run alongside the pest control work so success can be assessed and measured.

“Over time, the ongoing pest control of this site will establish the Pōkākā Eco-sanctuary as a
Turn to Page 31



Releasing whoio into the Makatote River in March 2018 are, Director-General of Department of Conservation Lou Sanson, Andrew Little, kaumatua Jim Edmonds, Te Kohatu Bauer (Raetihi School student and descendant of Uenuku, Tamakana and Tamahaki). The release marked the launch of the Pokaka eco-sanctuary plan, which receives a \$1.92m boost from the Government.

WPI

forestry timber pulp

TANGIWAI SAWMILL AND KARIOI PULPMILL

Supporting our people, our whānau and our community

CONTACT: jobs@wpinz.com

Ruapehu

MAY 2022

T42 **7 May**
Run across sections of the 42 Traverse, known by many mountain bikers as one of the best one-day hard-core trails in the country. For serious racers there are 45km mountain bike, 42.2 km trail run or a 24km trail run/walk options with 11 and 6.5km run/walk trails also on offer. www.t42.co.nz

JUNE 2022

Ohakune Carrot Carnival **4 June**
Back again for 2022. Come along for a fun family day with stalls, entertainment and competitions. For more information visit our website www.carrotcarnival.org.nz or email ohakunecarrotcarnival@gmail.com

Ohakune Fashion Show **5 June**
Showcasing winter fashion with a fun local fundraising event, held at the Matterhorn Bar & Restaurant. Proceeds to charity tbc.

Mt Ruapehu Ski Field Opens – Happy Valley **3 June**
Mt Ruapehu Ski Field Opens – Whakapapa **8 July**
Whakapapa is scheduled to open for the 2022 season, snow and weather permitting. Mt Ruapehu look forward to seeing you for a fantastic winter season.

Ohakune Mardi Gras **18 June**
Back again for 2022 to the Ohakune Junction. See [AudiologyTouring Facebook page](#) for details.

JULY 2022

Mt Ruapehu Ski Field Opens – Tūroa **8 July**
Tūroa is scheduled to open for the 2022 season, snow and weather permitting. Mt Ruapehu look forward to seeing you for a fantastic winter season.

Mini X-Games – Whakapapa **19 – 20 July**
It's a great way for young skiers & boarders to show off their skills & enter an event for the first time. All abilities are welcome for children aged 5 – 12 years. It's ideal for kids new to competition events to give it a go! There will be loads of great prizes from Mt Ruapehu to be won, so grab the family & join us for a great day on the snow! See www.mtruapehu.com for details.

Masters Week **25 – 29 July**
A week of activities to compliment the on-field experience. Dining - Degustation week at various venues; Snow Related Off Mountain Nighttime activities – Monday to Thursday, Tuning Clinics, Meet n Greet – History Night, Star Gazing - Dinner and activity, Mountain Film Night; Closed Days – Off Mountain, Mountain Bike Day, 4WD, Jetboat, Trap Shooting, Golf, Frisbee Golf, Hot Tubs and Dinner

Ohakune Snow Festival **24 July – 7 August**
The kids have gone ... the snow's great ... come and enjoy all that Ohakune and surrounds has to offer. See [Facebook page](#) for details.

AUGUST 2022

Better Beer Week **1 – 8 August**
Various venues in Ohakune celebrating all things beer to compliment a big day on the slopes. Matching local beer with food. IPA Day, International Beer Weekend, Local Brew Tap Take Overs, Guest Speakers / Guest Breweries, International Beer Day. See betterbeerweek.co.nz for more info.

NZ Mountain Film Festival **tbc**
Come and see the award winning selection of films from the NZ Mountain Film & Book Festival. Powderhorn Chateau, Ohakune Junction. See [Ohakune Snow Festival Facebook page](#) for details. Sponsored by Ruapehu Now.

Hospo Snow Mash **29 – 30 August**
Hospo celebrating the snow and beyond, enjoy the slopes and meet new friends. Learn some new tricks in the park with local crew. Get timed on a GS course. Race your buddies or a team on the banked slalom course. Just hang at the "Hospo Zone" and have a few beverages, great food and awesome music. Maybe even hook up with some locals and get some local knowledge. Hit the Apres in the Junction and get ready to party. Prizegiving followed by great sounds and heaps of fun. Tuesday get rid of that hangover starting with some great coffee and breakfast and then into another awesome day at Turoa. Head to the "Hospo Zone" to revisit last night and some tall tales. Wednesday is time to explore and maybe head to Whakapapa or enjoy some of the treats off mountain in the Ruapehu district.

Waikato Secondary School Ski & Snowboard Comp **26 August**
Waikato Secondary School Ski & Snowboard Competition at Tūroa. More details and registration can be found by emailing haigsnowboard@gmail.com. See our Facebook [WAIKATOSKIBOARDCOMP](#)

NIPS North Island Primary School Ski Champs **29 Aug – 1 Sep**
Held annually at Whakapapa run by North Island Primary & Intermediate Snow Sports Inc. Teams of 5 ski competitors or 5 snowboard competitors from schools all over the North Island gather at Mt Ruapehu for this event. It is now one of the largest single sport primary schools sporting events in New Zealand and the largest skiing event held on Mt Ruapehu with over 300 competitors. Years 1-6.

Fallout Festival **27 August – 11 September**
Music, Media, Mayhem. The Fallout Festival is a two-week long agenda of comedy, music and outright fun in Ohakune. You can catch a range of entertainers and activities at various bars, cafes and restaurant venues in the main township and at the Junction. See [Facebook page](#) for details.

Events



SEPTEMBER 2022

Yeti's Birthday **4 September**
Ageless celebrity makes a birthday appearance - happy birthday Yeti at Tūroa.

NZ Mountain Film Festival **tbc**
Come and see the award winning selection of films from the NZ Mountain Film & Book Festival. Kings Bar & Restaurant, Ohakune Junction. See Fallout Facebook page for details. Sponsored by Ruapehu Bulletin & Cheal.

Tūroa Ski & Ride Women's Week **5 September**
To be held at Tūroa including sampling workshop at an Ohakune Junction location one evening!

NIPS North Island Primary School Ski Champs 12 – 15 September
NIPS week 2 is an event run by Mt Ruapehu, with teams of Year 7 – 8 competitors. All schools around the North Island are encouraged to enter! Team entries are no longer limited. You may enter as many teams as you wish, providing you meet the entry date deadlines and criteria.

Tūroa Ski & Ride Men's Week **12 September**
To be held at Tūroa including sampling workshop at an Ohakune Junction location one evening!

NI Secondary School Ski Champs **19 – 20 September**
The largest skiing event in the Southern Hemisphere and probably the biggest single competition organised by one college. The event is spread across both ski areas, with ski racing taking place at Whakapapa on Monday and slopestyle being held at Tūroa on Tuesday, making for an exciting two days for competitors.

Tom Campbell Memorial Big Air – Tūroa **24 September**
See some of Mt Ruapehu's & New Zealand's best Skiers and Snowboarders throw down on the North Island's largest jump. Athlete line up coming soon! Located at the High Flyer Park, this will be a spectacle not to be missed and is certainly one you'll want to watch! Exhibition starting at 11am. There'll be giveaways and the chance to ride with these athletes, followed by a signing at The Powderkeg later that evening. Stay tuned for more details and specifics - this a must see event right here at Tūroa! #TCBigAir #TCGC

NI School Snowboard Champs **27 – 29 September**
North Island Primary and Secondary School Snowboard Championship. Tūroa. More details and registration can be found by emailing hagsnowboard@gmail.com. See our Facebook K2NISSC

OCTOBER 2022

Retro Day **1 October**
A celebration of the beginning of spring skiing and snowboarding in the Ruapehu. It's time to celebrate so break out your dad's old one piece or maybe try and fit into your old fluoro pants because the Retro Police will be out and about handing out fashion fines that could win you and your outfit some stunning prizes. See Facebook page for details. #RETRODAYOHAKUNE

Whakapapa Pond Skim **1 October**
Celebrate Spring with a great day of skimming the pond at all costs. Sink or skim it's up to you. It is fancy dress day at Whakapapa so come dressed in your wackiest outfit, togs, bikinis or board shorts as it's going to get wet! Helmets are **COMPULSORY!**

Peak 2 Powderkeg Triathlon Tūroa **8 October**
The iconic and unique triathlon is back again for 2022 and celebrating it's 30th year. Starting on the slopes of Tūroa, this multi sport event sees competitors race down the mountainside by snow, foot and bike to the Powderkeg in Ohakune for the fourth and final stage of the event – sculling a beer (or soft drink if underage).

Pink Ribbon Bikini Downhill Tūroa **8 October**
Pink is the colour of the day to raise money for Breast Cancer Foundation. Dust off those bikinis, mankinis or fancy dress and help Tūroa raise heaps of money for the Foundation. Spot prizes to be won.

Tūroa Pond Skim **22 October**
Will you sink or skim!?! You don't know until you try! You can attempt this as many times as you like, so why not come and give it a go! Remember to check the weather report at mtruapehu.com from 6:30am for any updates. Protective Equipment – Helmets are **MANDATORY!**

Ohakune Blues & Roots Festival **23 October**
Ohakune Events Charitable Trust's NEW event on Labour Weekend 2022 – the inaugural Ohakune Blues & Roots Festival. This family friendly festival will appeal to music lovers of all ages. See www.oect.co.nz for updates.

**FOR MORE DETAILS, GO TO
WWW.OHAKUNE.INFO**

PLEASE NOTE: EVENT DATES SUBJECT TO CHANGE

Vintage rail journeys to Ruapehu all aboard

A new way to experience train travel from Tāmaki Makaurau to Ruapehu kicked off this month with Glenbrook Vintage Railway.

The 3-day, 2-night Discover Ruapehu Rail Tours invites travellers to find beauty, discover adventure and immerse in heritage while experiencing the charm and spectacular sights of rail travels.

Traversing through the historic North Island Main Trunk Line, highlights include the Makatote Viaduct, the Raurimu Spiral and the landscapes of Mt Ruapehu and the Tongariro National Park.

“We are thrilled to be able to offer this fantastic mode of travel to Ruapehu,” says Kim Treen, manager business relationship and development for Ruapehu i-Site.

“Visitors are whisked away from big city life and can truly experience a rejuvenating, relaxing weekend away in Ruapehu by vintage railway.”

Visitors can choose from multiple packages to Taumarunui, National Park or Ohakune or create a completely customisable package catering to specific interests, occasions, or seasonal events.

“For the past year or so we’ve been working closely with Visit Ruapehu and the Ruapehu District i-Site Visitor Centres to bring immersive, vintage rail journeys back to life,” explains Tim Kerwin, general manager of Glenbrook Vintage Railway.

Offering a unique and sustainable way to travel, visitors from all walks of life can enjoy the experience of an authentic rail journey into

the wide-open spaces and otherworldly landscapes of Ruapehu. Perfect for solo travels, a family holiday, a getaway with mates or reconnecting with friends and family – a weekend away with Glenbrook Vintage Railway offers something for everyone.

Different package themes include ride and relax, mountain fun, fisher’s delight as well as Whanganui River wilderness adventures offering visitors the chance to enjoy the Sky Waka experience on Mt Ruapehu, high tea at the iconic Chateau Tongariro Hotel, ride the iconic Ohakune Old Coach Road, or jetboat to award-winning Blue Duck Station.

More information is available at the Ruapehu i-Site in Ohakune, phone 0800-647-483 or e-mail isite@ruapehudc.govt.nz.



A Glenbrook Vintage train crosses the Hapuawhenua Viaduct.

Mardi Gras line up

Ohakune’s Mountain Mardi Gras will be held on Saturday 18 June, the Ohakune Events Charitable Trust has announced.

They have also released a back-up date – Saturday 15 October – “for consumer confidence”.

There had been calls for the event to be moved to later in June, but this would have clashed with the new Matariki holiday.

“We didn’t want to get in the way of Matariki celebrations – it’s a quite different kaupapa,” says Trust member Jayde Lowe.

“As always we look forward to a fun, colourful and safe event for Ohakune to launch the season.”

The line up includes Delta Heavy, Hot Dub Time Machine, Luude, 12th Planet, Chiccoreli & Tali, Bensley, Keeno, Maduk, Matrix & Futurebound, Pauline Herr, Twerl, Elipsa, Grommie, Jess Rhodes, Levi, Mylky, Repair, So&So, Sly Chaos & Rolex, Twofold, Vikae, Waja. Acts are from NZ, UK, USA, NL, Australia and Canada.

The Mardi Gras has partnered with Glenbrook Vintage Railway to run a Mardi Train - Auckland to Ohakune Return train, which will be fully licenced, for Friday 17 June, returning on Sunday 19 June.

Slava Ukraina Glory to Ukraine

A blue truck with a white cab is shown from a rear three-quarter view. The side of the truck features a large Ukrainian flag. The truck is parked on a yellow surface.

021 111 6514 Ohakune

The logo for Rabbit X Press, featuring a stylized rabbit and the text "RABBIT X PRESS".

RABBIT X PRESS

Longboarders speed down from Turoa



100km/h down the Ohakune Mountain Road in December. Photo: Matt Greene.

At speeds of around 100km/h down the Ohakune Mountain Road, a group of skateboarders say it was a “calming” thing to do, when they took on the challenge in December.

Zain Solanki and friends filmed each other on the road, although as well as “calming”, he said the grit-covered road was one of his scariest downhill rides.

The 23-year-old has been riding since 12 and says the chip-sealed road may not make for the smoothest ride, but that it was better for safety.

“It keeps riders on their toes. You don’t want to be nervous when you do it, but you want to be prepared for what you’re doing and what’s

ahead of you.”

Riders ‘drift’ around corners by dragging their hand along the road and edging the board sideways. Speeds can drop from 80kmh to 30kmh in 30 metres.

The crew said they wear motorcycle-style safety gear, in case of a fall.

He says you have to be calm – if you’re not your legs seize up and you get the speed wobbles.

They drove the road first and have spotters checking for traffic and also have a following car. A lead car alerts the skaters to oncoming traffic through helmet radios.

“Our first ride is always tame and we build

up the speed from here.”

He warns others not to take on the ride without the right gear, a team of spotters and years of experience.

“Do it with a group of people who know what they’re doing.”

Police said skateboards are classified by NZTA as wheeled recreational vehicles and are allowed on the road but must keep as close as possible to the edge of the roadway.

After their final ride and lunch at Ohakune, they drove around to Whakapapa to take on the Bruce Road, which has been the choice for organised skating events in the past.

Ride the trails, do the survey and help ensure we are funded for the future!

- OHAKUNE OLD COACH ROAD
- MIDDLE / RUATITI ROAD
- FISHERS TRACK
- MARTON SASH AND DOOR
- KAIWHAKAUKA TRACK
- MANGAPURUA TRACK*
- WHANGANUI RIVER ROAD
- UPOKONGARO TO THE TASMAN SEA



[Mountainstosea.nz/support](https://mountainstosea.nz/support)



Mountains to Sea
Ngā Ara Tūhono



Find out more at: mountainstosea.nz



WHANGANUI
ALL YOU NEED (AND THEN SOME)



*Mangapurua to the Trig only in winter. See trail status on website for more detail.



EATING OUT IN RUAPEHU

NATIONAL PARK

SCHNAPPS BAR

SH4, National Park Village, Tongariro National Park Ph: 07 892 2788
The perfect place to relax after the Tongariro Crossing, 42 Traverse or skiing on Mount Ruapehu. Panoramic views of the central plateau mountains, enjoy the open fire, with great meals on offer. Big screen TV's, wholesale facilities and garden bar. Function & conference facilities also available. Come and play 18 holes of Mini Golf. www.schnappsbarruapehu.com

OHAKUNE

BIRCHHILL Bakehouse – Bodega – Boardroom

19 Goldfinch Street, Ohakune Ph: 06 385 8288
Your one-stop destination for sourdough breads, handcrafted pies, a menagerie of delicacies, artisan's tools and utensils ... and coffee too!
www.birchhillbakehouse.co.nz

BLIND FINCH HAMBURGERIA

29 Goldfinch Street, Ohakune Ph: 0800-EAT-BURGERS
Whether it's Manuka wood-fired beef, buttermilk fried chicken or homemade falafel...there is a burger here for You! Delicious international cuisine-inspired gourmet hamburgers and loaded fries sound good? Yeah, we think so too!
www.theblindfinch.co.nz

JAILHOUSE COFFEE COFFEE2GO

Ohakune 29 Ayr St, outside TCB Waiouru SH1 by the public toilets
Dedicated to delivering a fine coffee experience since 2004. Serving Havana Coffee Works XBlend the COFFEEUFEEL. Slick service, organic milk, double Shots, Paywave contactless payment, dairy free alternatives, loyalty cards. Consistently Good Coffee Always.

KINGS BAR & RESTAURANT

3 Rimu St Ohakune Junction Ph: 06 385 8648
Est in 1913, historic Kings offers an inviting menu by locally renown chefs, a great selection of boutique wines and is the exclusive venue to offer Ruapehu Brewing Company beers on tap. See our Facebook page for what's on. Open weekdays from 4pm and weekends from 2pm.

LA PIZZERIA

6 Thames St, Ohakune Junction Ph: 06 385 8558
Ohakune's most famous pizza restaurant. For over 30 years we have been cooking Ohakune's best pizza. Come up and see us in the "Junction" at the end of the Old Coach Road and try one of our hot, tasty, handmade pizzas. Same great menu available for takeaway. Open from 5pm. Check out our days online at: www.lapizzeria.co.nz

LKNZ LODGE & CAFE

1 Rata St, Ohakune 027 257 LKNZ (5569)
All day menu including our delicious big breakfast, creamy mushrooms, homemade soups, wedges, nachos, toasties, waffles and more ... Volcanic coffee, Chateau ice cream, real fruit smoothies and ice-cream thick shakes. www.lknz.co.nz

MAGIC CHILLI

68 Clyde St, Ohakune Ph: 06 385 8619
Indulge in excellence – enjoy the best Indian cuisine from our qualified chef. Takeaways available. Open Monday to Sunday 5 – 9pm. Closed Tuesday.

MOUNTAIN KEBABS

29 Clyde St, Ohakune Ph: 0800-KEBABS
King size kebabs, king size flavour! If you're hungry for a tasty filling meal on the run then grab a mountain kebab ...hits the spot after a long days riding on your bike or on the mountain. Open 7 days a week, midday – 9pm.

OCR CAFE & RESTAURANT

2 Tyne St, Ohakune (Bottom of the Mountain Road) Ph: 06 385 8322
Come and enjoy some of Ohakune's finest in a relaxed cosy atmosphere. Enjoy a delicious platter, wholesome food and NZ wine and craft beers. Gluten free options available. Excellent kids menu. Fully licensed.

OHAKUNE

ODETTAS KITCHEN

Next to the New World car park Ph: 027 443 1426
Can't be *@##&\$! cooking? For when you want to dine in instead of out. Plant based meals, salads and desserts, ready to take anywhere! Good for you, good for the planet! Pre-ordered packed lunches for day trips available. Open Monday-Friday 10-4.

POWDERKEG

Bottom of the mountain road Ph: 06 385 8888
The iconic Powderkeg gives you that warm alpine feel with large open fires, hot mulled wine and a great craft beer selection. With over 30 years' commitment to service and good quality free range food. Follow us on instagram @ powderkegbar for our weekly deals, parties and giveaways. Great breakfast and delicious brunch cocktails. Open 7am – until late 7 days a week. See you at The Keg.

RICE BAR & FOOD

@ Snowman Lodge, 68 Clyde St, Ohakune Ph: 06 385 8600
Contemporary served authentic Thai food and other Asian favourite dishes. Tasty food, cold drinks, good service with great company. The perfect spot to wind down after your day out adventuring, with the iconic view of Mt Ruapehu.
www.snowmanlodge.nz

THE CYPRUS TREE

79 Clyde Street, Ohakune Ph: 06 385 8857
Check out our new summer menu. Kiwi craft beers, boutique wines and cocktails to quench that summer thirst. Playroom for the kids, fozzeball, air hockey and spaces to keep the kids entertained. Spectacular mountain views. A great place for casual get togethers or special occasions. Open 7 days, 5pm till late.

THE KITCHEN

4 Thames Street, Ohakune Junction Ph: 06 385 8664
Open for winter – The Kitchen specialises in affordable and friendly, fresh and tasty modern fare. Soft shell tacos, steak plates, home made dumplings, poke bowls, a full range of vegan, vegetarian and gluten free options. Ohakune's most thoughtful drink list including a great range of NZ craft beer. Eat in or takeaway. Open from 4pm, next to Powderkeg, Ohakune Junction.

THORN OHAKUNE

56 Clyde St, Ohakune Ph: 021 0566 978
Locally owned and operated boutique coffee shop, breakfast and lunch bar. Gourmet toasted sandwiches, Best Ugly bagels, Fresh sandwiches, smoothies and juices. Organic award winning Hawthorne Coffee. No Vax Pass required. Open 6 days: 7am – 3pm Monday - Saturday.

TOASTIE OHAKUNE

45 Clyde St Ohakune Ph: 020 4126 5520
Twenty Four Carrot Magic - with four cheese toasties, doughs, espresso and sodas. See our instagram @toastieohakune for daily updates and full menu.
www.peoplespantry.co.nz

UTOPIA CAFÉ/RESTAURANT

47 Clyde St, Ohakune Ph: 06 385 9120
Open 7 days from 7:30am – 3:30pm for all day breakfast and lunch. A cosy memorable atmosphere with a great range of cabinet food and beverages, including regional famous Volcanic coffee, Frappé and smoothies. Vegan/ Gluten-free options for both savoury and sweet are available. Speedy free Wi-Fi! A perfect place for everybody!

RAETIHI

ANGEL LOUISE CAFE

Seddon St, Raetihi Ph: 06 385 4976
Open 7 days from 7am to 3pm, breakfast until 11am, lunch 11am to 2.30pm. A fine selection of homemade sweet items and our famous pasties, differing flavours daily. Seasonal lunch menu and a great range of cabinet food. Come and view our growing art collection. Free WIFI available. On site and out catering a speciality, with individually designed menus to suit your needs & budget.

A 5-star garden of National Significance

A Taumarunui garden, Twenty five years in the making, Bradley's Garden has been recently recognised as a 5-star garden by New Zealand Gardens Trust – a first for Ruapehu and a “true labour of love” cultivated by owners Melana and Simon Bradley.

“This is a huge success not only for Bradley's Garden but for the Ruapehu region as a whole. To have a 5-star Garden of National Significance tucked away in Taumarunui is something we are really proud of,” said Ruapehu's mayor Don Cameron.

As a New Zealand Gardens Trust 5-star garden of National Significance, Bradley's Garden has been recognised for its garden design, landscaping, planting design, horticulture, and maintenance. Highly recommended for presentation, design and plant interest throughout the year, Bradley's Garden has surpassed an extensive assessment and has been commended for its distinct identity, character, and special features.

With five acres of fully landscaped gardens, visitors are invited to discover seven different themed gardens including the enchanting Italian area enclosed with towering Thuja Green Giant trees, the limestone walled natural amphitheatre, Lavender Lane, and the Olive Grove Cathedral.

Open daily from October through to May, Bradley's Garden is located 3km outside of Taumarunui along the Forgotten World Highway – a spectacular, secluded driving route that takes in hidden gems and one-of-a-kind experiences.

Entry is \$10 per person with a Devonshire tea available for booking in the bespoke garden gazebo.

Beyond the gardens, visitors can also enjoy a 9-hole country mini-putt golf course with grassed fairways and panoramic views as well as a fully self-contained bed and breakfast cottage with private spa.

Bradley's Garden also offers a stunning on-site functions venue to host weddings, corporate dos, or special events.



Melana and Simon Bradley's Taumarunui garden is now rated 5-star.



ACCOMMODATION | BAR | RESTAURANT
Est. 1913

**Historic Kings offers an inviting menu
by locally renown chefs**



Ruapehu Beers on tap

**Book for functions ...
small or large groups welcome**



(06) 385 8648 3 Rimu St, OHAKUNE
info@kingsohakune.co.nz
www.kingsohakune.co.nz



Birchhill

bakehouse • bodega • boardroom

www.birchhillbakehouse.co.nz

19 Goldfinch Street Ohakune

Phone 06 385 8288

Te Ara Mangawhero trails update

After years of planning, lobbying, rule changing and funding applications, actual physical work on the trails from Tūroa to Ohakune and across to Horopito could be starting later this year.

Almost all of the paperwork – resource consents, building consents, environmental impact studies, works contracts and consultations – have been complete, the Bulletin has been advised.

However, this has come too late for this construction season but physical work should start in spring, with the initial contracts to be

run concurrently.

Te Ara Mangawhero will be a 19km shared off-road trail descending from Tūroa Ski Field to Mangawhero, near Ohakune. The Mangawhero-Horopito link will largely follow old tram lines and former farmland on the lower, southwestern slopes of Mt Ruapehu. It will connect with the current 15km Old Coach Road to create a loop ride or walk between Ohakune and Horopito.

Watch this space...

RUAPEHU SERVICES

Furnishers

WANGANUI
ESTABLISHED 1916
FURNISHERS

Quality furniture
flooring and
window treatments
for the discerning

Geoff Anderson 33 Victoria Avenue, Wanganui
027 283 9551 email wangafurn@xtra.co.nz

Ph 06 345 4554

Building Supplies

PlaceMakers

OHAKUNE DEPOT

FOR YOUR BUILDING
PROJECT & DIY NEEDS

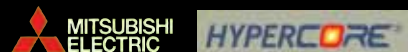
MON TO FRI – 7.30am – 5pm | SAT 9am – midday

7 BURNS ST, OHAKUNE

Ph 06-385 8414

Appliances

**Choose the best
heat pump designed
to heat your home**



Free quotes. Interest Free Terms available.
Total 5-year Warranty. Q Card.

Your Local 100% Independent Store
& Heat Pump Installers

Ohakune TV Electrical

Ph 06 385 8700

Plumbing / Drainlaying

B&M PLUMBING LTD

- Plumbing & Drainlaying
- Pumps - sales, servicing & installation of all pumps
- Fires & Solar
- 5 Ton Digger with Augers, Ditchwitch & Tip Truck

"Your local Registered Certifier"



Call Brian
027 436 1075

Email:

bmfred@xtra.co.nz



Ph 06 385 4718

Property Maintenance

JP PROPERTY MAINTENANCE

- ▶ Minor house alterations
- ▶ Decks
- ▶ Sheds
- ▶ Bathrooms
- ▶ Fences
- ▶ Lawns
- ▶ Grounds maintenance
- ▶ Water blasting



Contact John on 027 445 6041
or porters@xtra.co.nz

Ph 027 445 6041

Electrician

Are you looking for an electrician who:

- Turns up on time?
- Keeps his promises?
- Offers efficient service & sound advice?

Then call Jake Fah at

Mountain Electrical

REGISTERED ELECTRICIAN

Ohakune - Raetihi - Rangataua -

Horopito - National Park

PH. 06 385 3393

Ph 021 770 123

Landscaping



- Drainage
- 5T/3T Diggers
- Road Roller
- Equipment for Hire
- All Concrete Work
- Concrete Pumping
- Concrete Cutting

RICHARD FLEURY
027 241 3412

DIPLOMA IN LANDSCAPE DESIGN

Ph 027 241 3412

Gas Fitting

AP Plumbing & Gasfitting

- Gas, hotwater and heating specialists
- Central Heating
- Gas installation, repair and maintenance services

Phone Andrew 0274-578-393
Email andrew@applumbingandgas.co.nz

Ph 06-343-6866

Upholsterers



- Furniture upholstery
- Vehicle upholstery
- Tarpaulins • Canvas & Leather
- Shade sails • Saddlery

Factory SH49, Tangiwai, Ohakune
Mobile 0274 467 289

E: westlorne@xtra.co.nz

www.westlorne.co.nz

Ph 06 385 8487

\$1.92m for Pōkākā kākā and kererū

From Page 23

secure habitat for taonga species, including a number of endangered orchids, North Island brown kiwi, pekepeka (bat) and yellow-crowned kākāriki, to live and breed,” says Kiri Allan.

“Recovery of these species within the Pōkākā Eco-sanctuary will lay the foundations for ongoing ecosystem and species recovery across the wider central North Island region. Flocks of kererū and kākā, and breeding colonies of seabirds in particular, are all valued taonga in the historic forests and alpine habitats of Wainuiārua.

“Their re-establishment would help habitat restoration and species reintroduction, which is integral to the return of lost species including kākāpō and tītī.

Uenuku ultimately see the eco-sanctuary as an addition to the tourism offerings in the Central Plateau – a place to go when the ski fields are closed – which provides local jobs, sustainable revenue and most importantly a reconnection to the whenua for the wider iwi.

Uenuku has been working for six years to establish the Pōkākā Eco-Sanctuary, west of the Tongariro National Park.

The proposed eco-sanctuary takes the name of the local area and according to the iwi is a historical reference to the darkening of skies by flocks of kākā taking flight.

MOUNTAIN

KEBABS

KEBABS MED LGE GOURMET EXTRAS

BEEF
CHICKEN
SEAFOOD
VEGETARIAN

CAMEMBERT
BLUE CHEESE
OLIVES
SALAMI
TABOULI
HOMUS
SPROUTS
MUSHROOMS

SAUCES

HORSE RADISH
MUSTARD
TAHINI
SATAY
CHILLI
BBQ
RELISH
TOMATO
YOGHURT
GARLIC MAYO
MAYO
APRICOT

All Kebabs served wrapped in Toasted Pita Bread with Cheese Cabbage Carrot Onions Tomatoes & Free Sauces of your Choice

DRINKS

COFFEE
TEA
SMOOTHIES
MILKSHAKES

Simply great taste!

29 Clyde St OHAKUNE
Phone orders 3859 047 - 0800 KEBABS

RUAPEHU ACCOMMODATION

OHAKUNE

RUAPEHU CHALET RENTALS

16 Goldfinch Street, Ohakune www.ruapehu.co.nz
Email: info@ruapehu.co.nz Ph: 06 385 8149

With us, you can select the size, style, and location of alpine accommodation to suit your needs. Browse and book online. www.ruapehu.co.nz

RIMU PARK MOUNTAIN LODGE

Rimu Street, Ohakune Ph: 06 385 9023
stay@rimupark.co.nz www.rimupark.co.nz

At Rimu Park Mountain Lodge we have accommodation options for everyone; spend a night in a dorm room or double room in the old Station Masters 1914 homestead. Situated just 3 minutes walk from the heart of Ohakune Junction and the foot of Ohakune Mountain Road.

SNOWHAVEN ACCOMMODATION

92 Clyde Street, Ohakune www.snowhaven.co.nz
Email: info@snowhaven.co.nz Ph: 06 385 8600

Snowhaven offers a range of modern self-contained accommodation right in the heart of Ohakune. Located centrally within walking distance to various restaurants and the Snowman Spa. Call now for your best price.

STATION LODGE

60 Thames Street, Ohakune Phone 06 385 8797
Email: stationlodge21@gmail.com www.stationlodge.co.nz

Great accommodation for large groups, family reunions, school groups and corporate functions. Guests enjoy stunning mountain views with exclusive use of the lodge and facilities including a fully equipped self-catering kitchen, dining and lounge areas, spa pool and drying room. Station Lodge Chalets - Spacious and stylish two-bedroom chalets with mountain views and each have their own private spa pool. Station Lodge and the chalets are a one minute walk from The Junction cafes, bars and restaurants.

NATIONAL PARK

NATIONAL PARK BACKPACKERS

4 Findlay Street, National Park Ph: 07 892 2870
nat.park.backpackers@xtra.co.nz www.npbp.co.nz

Magnificent view of volcanoes right from our doorstep. Rooms for all budgets, from backpacker dorm beds to double and twin rooms with ensuite, off street parking, indoor climbing hall with over 50 different top rope climbs, beginners to advanced, open daily 9 am to 8 pm. Bus service for hiking and mountain biking. Bookings essential.

TONGARIRO CROSSING LODGE

27 Carroll St, National Park Village www.tongarirocrossinglodge.co.nz
Email: welcomet@tongarirocrossinglodge.co.nz Ph: 07 892 2688

Experience a warm welcome and exceptional personal service at Tongariro Crossing Lodge - a family-run boutique lodge with a truly unique character. You will feel at home from the moment you arrive, as you unwind in our spacious suites or enjoy our delicious breakfast served with our fresh, homemade bread.

RUAPEHU SNOW BULLETIN

Published by Ruapehu Media Ltd

(06) 385 8532

Home of Ruapehu's only locally owned weekly community newspaper.
Established 1983.

Publishing Editor: Robert Milne – robert@ruapehubulletin.co.nz
Advertising/Features: Jude Chevin – ads@ruapehubulletin.co.nz

love no listing costs.

competitive commission rates | professional advice

free marketing packages



love local.

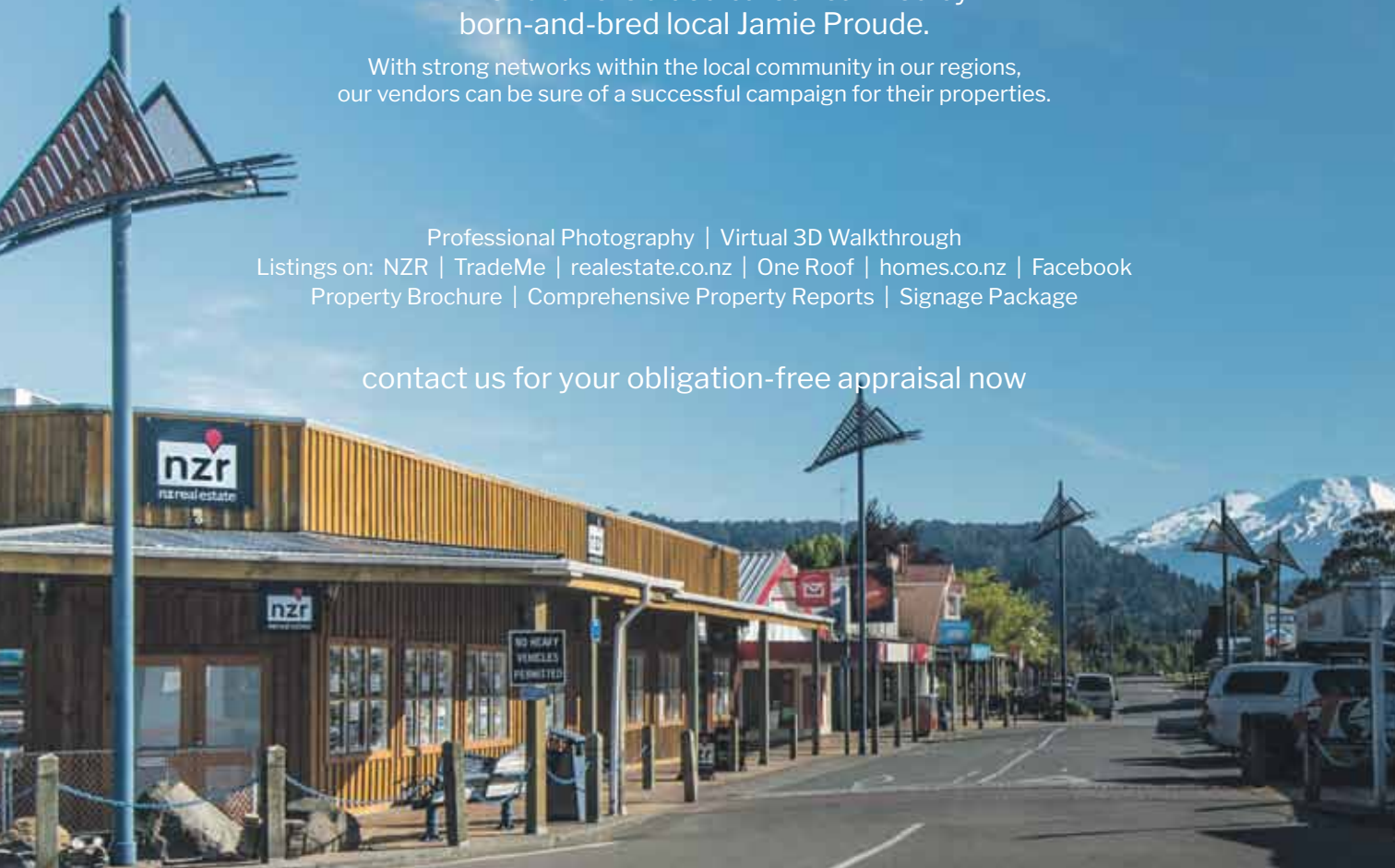
NZR Ohakune is a dedicated team led by
born-and-bred local Jamie Proude.

With strong networks within the local community in our regions,
our vendors can be sure of a successful campaign for their properties.

Professional Photography | Virtual 3D Walkthrough

Listings on: NZR | TradeMe | realestate.co.nz | One Roof | homes.co.nz | Facebook
Property Brochure | Comprehensive Property Reports | Signage Package

contact us for your obligation-free appraisal now



nZreal estate

1 Goldfinch St, Ohakune
06 385 4466 | nZR.nz