

Aura  
Light



# Contents

---

3	21	36	41	47
Research	Product Development	Ideation	Concept Development	

# Target Archetype:<sup>3</sup>

---

## Homeowners

---



Young



Old



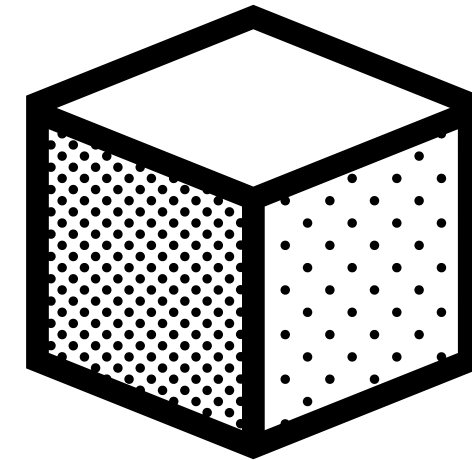
# Critical to Think About:<sup>4</sup>

---



## For the People:

- Who is Buying
- Who it's For
- Who it's For
- Emotions / Moods



## For the Product:

- Color Trends
- Form Trends
- Aesthetic Adjectives
- Tech Intergeneration

## What brings you good quality of life?

---



"A good night's sleep, a good kitchen, a clean house with lots of windows, and financial stability."



"I want (the things I buy) to last a while because I'm willing to pay for quality, but no willing to pay to much."



"Bikes because they are a fast and fun way to commute, a nice coffee maker, filtered water in the refrigerator, pet help products, lighting, modular storage, airflow movable and expandable furniture."

## How do you chose what you buy?



"Form/design, the quality of materials and the build of it, worth the price, and the price."



"I don't buy very many things, I try to keep it minimal, don't like clutter because it translates into a cluttered mind. The key is to find a balance between price, looks, longevity/quality."



"I rearrange every four to six months, sometimes I get new things."



**Research:**

## **Women**



**Purchase More - Drive Market**

**Shop More Online**

**Research In-store or by Word of Mouth**

# **Who's Buying:<sup>6</sup>**

---

## **Men**



**Shop More In-store**

**Research Beforehand**

**Spend Less Time In-store**



# Color Trends for 2020: <sup>7</sup>



**SPRING | SUMMER**

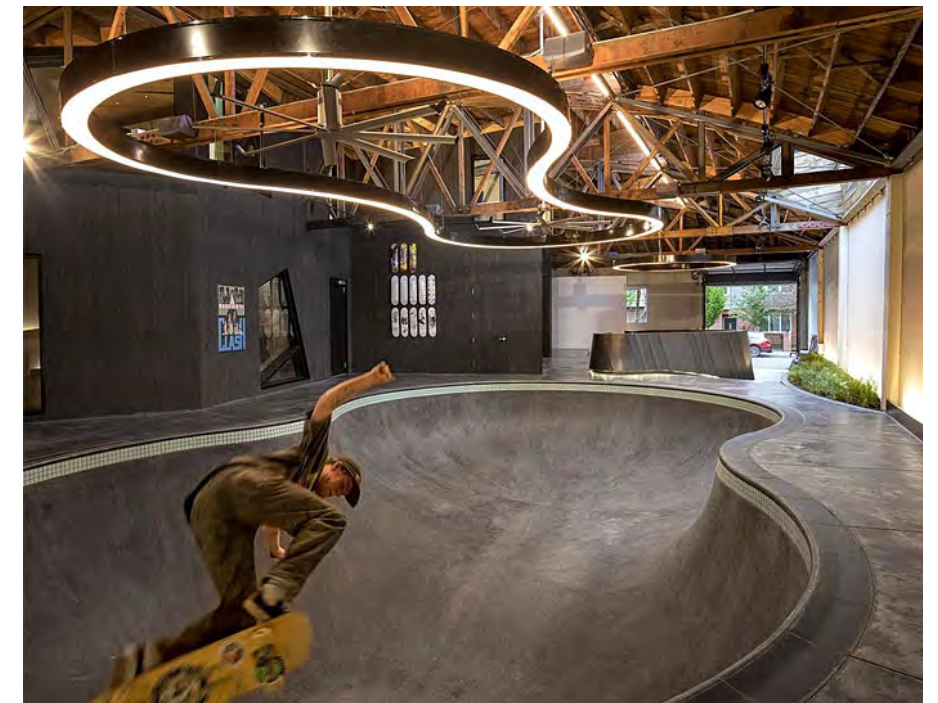
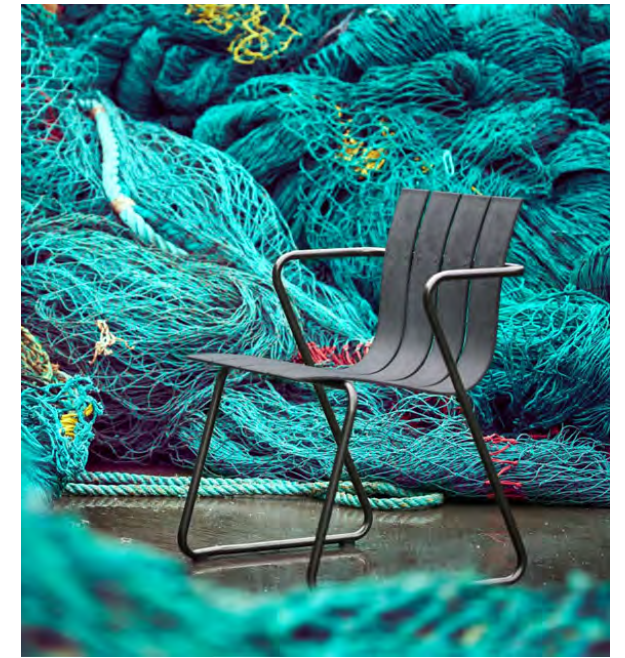
**FALL**







**Research:**



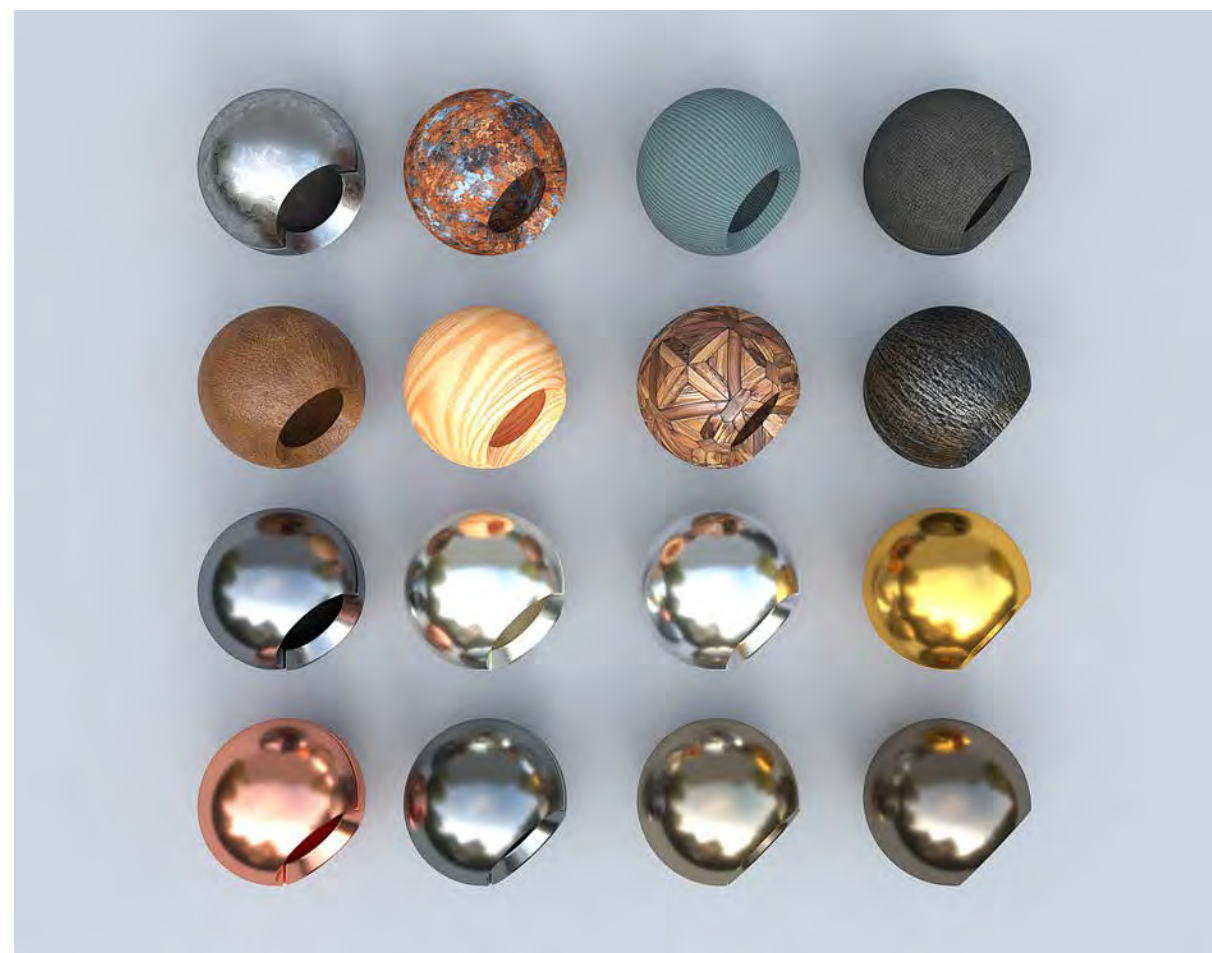
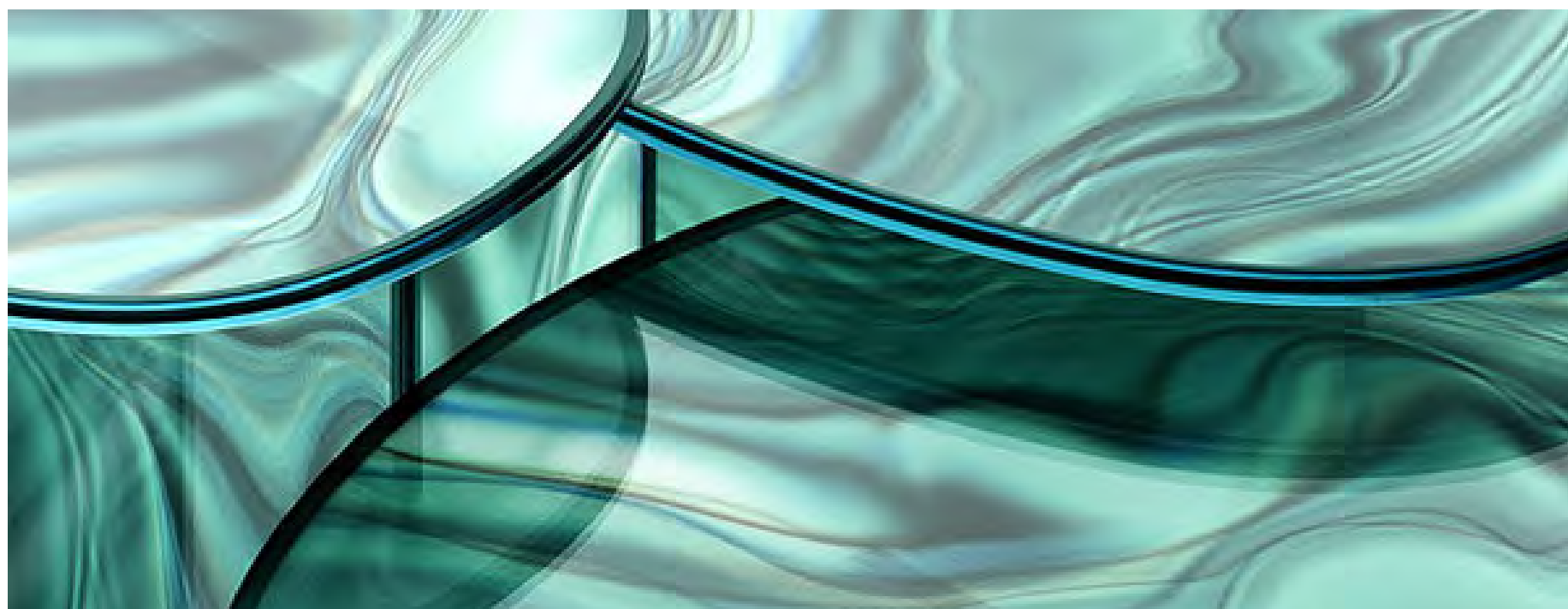
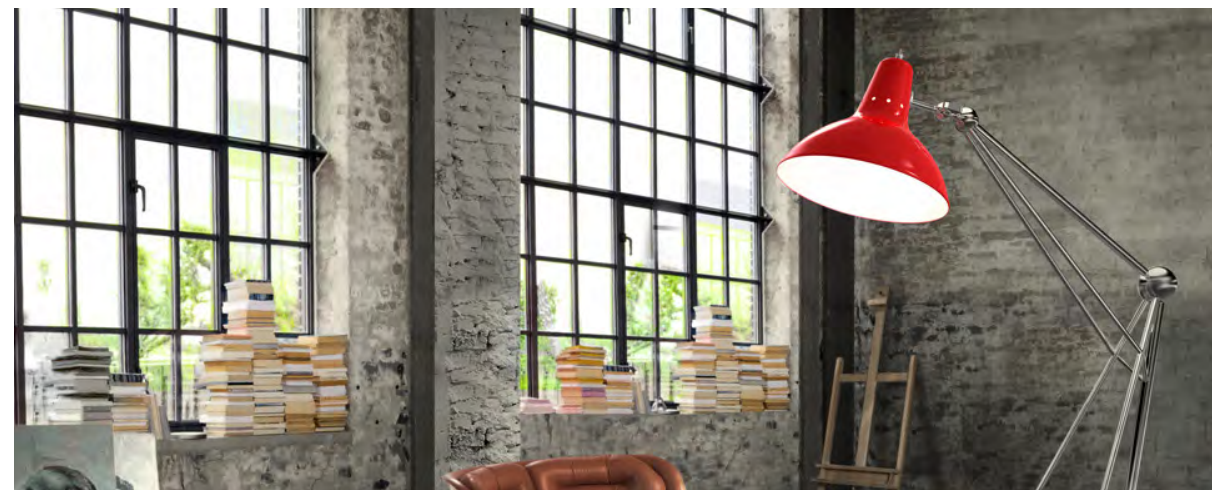


# 2021 Pantone:





# 2021 Materials:





# 2021 Decor:





# 2021 Entertaining:





# 2021 Barware:

## Personalized



## Vintage inspired

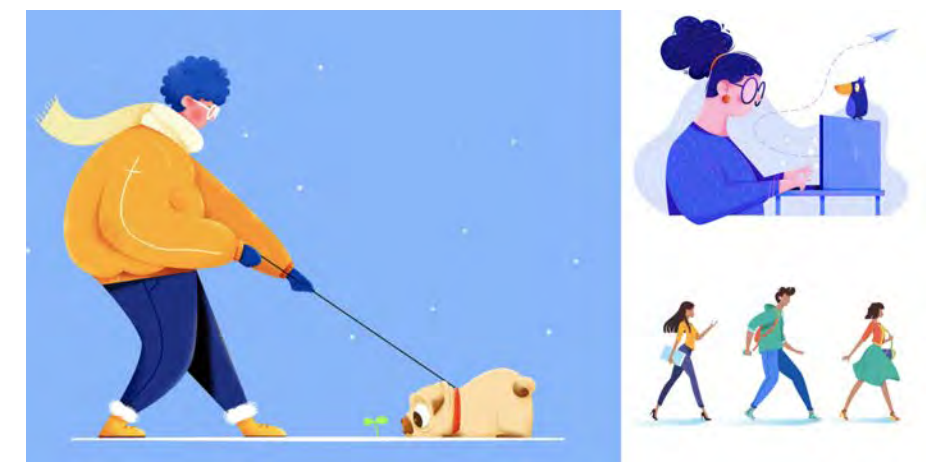
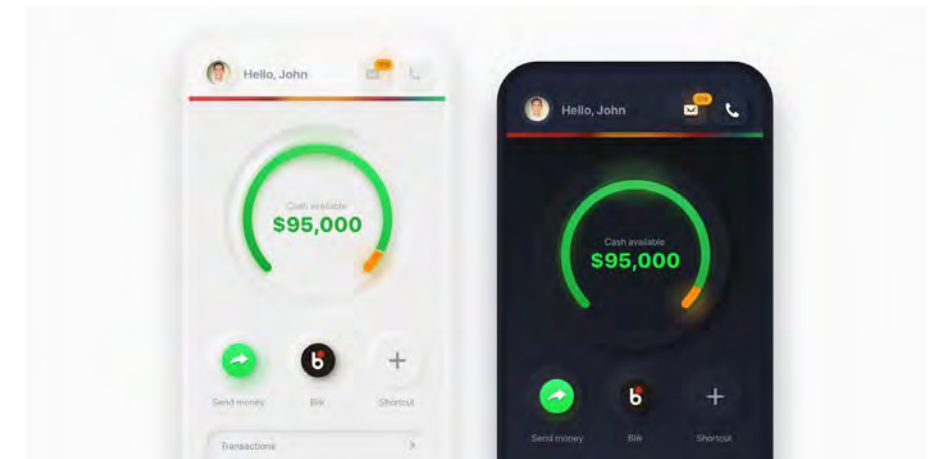
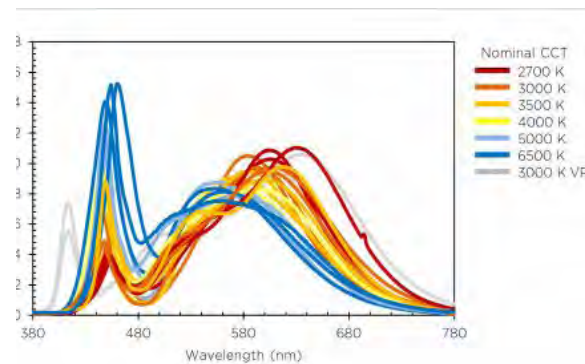
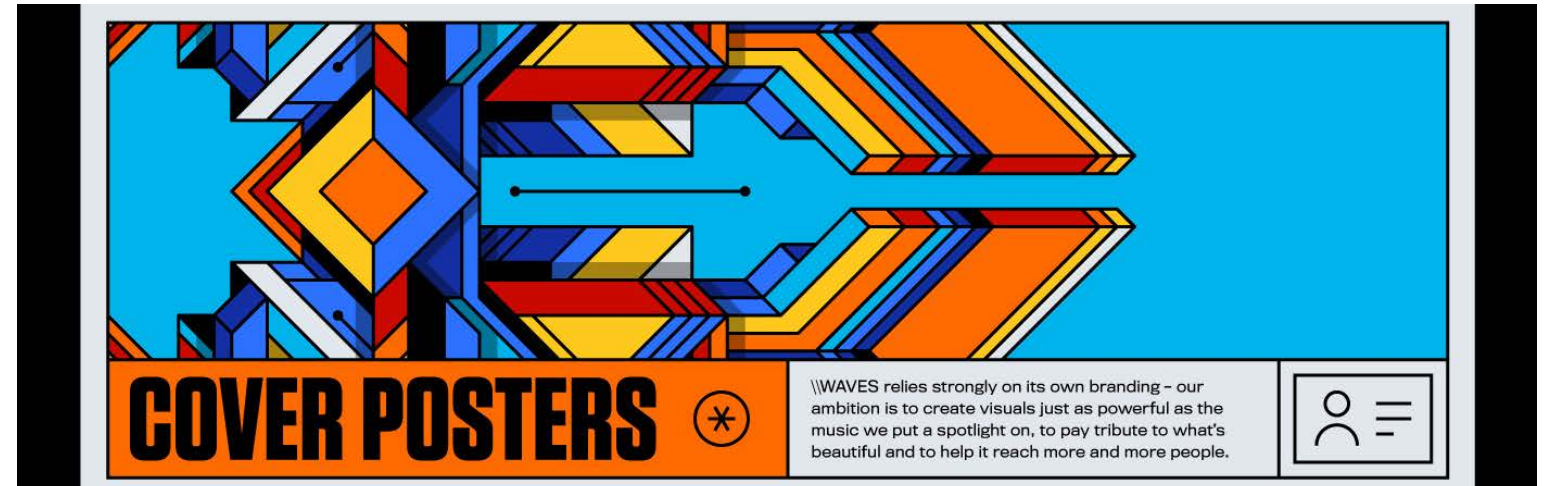
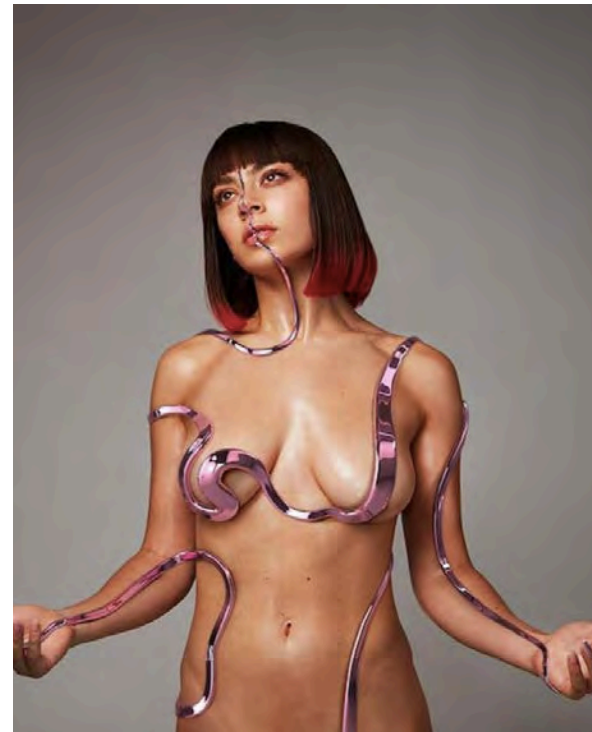


## Premium



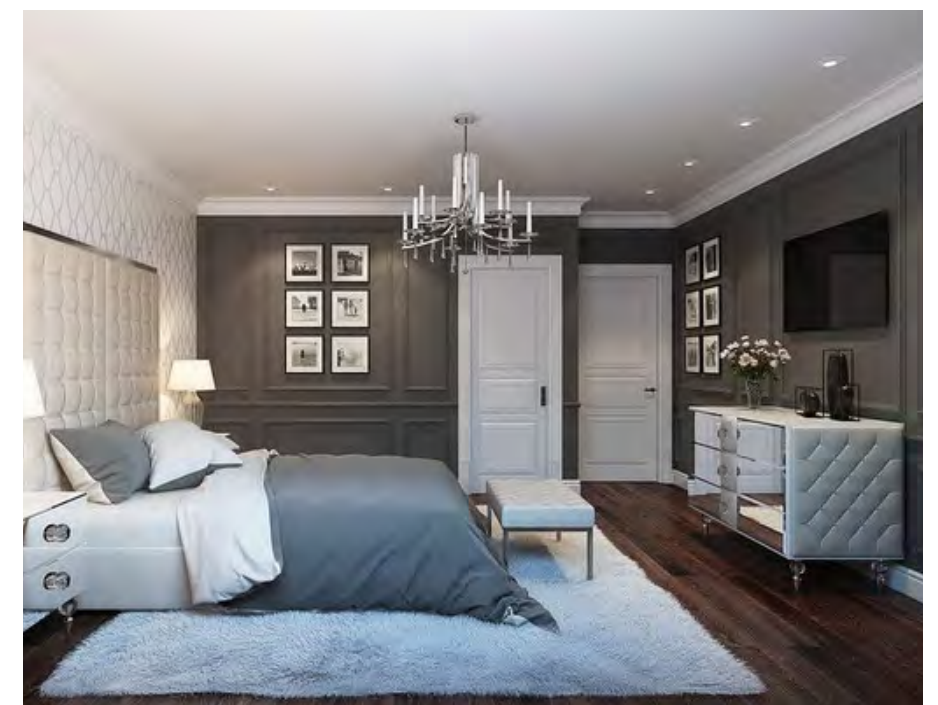


# 2021 Graphics:





# 2021 Chandeliers:





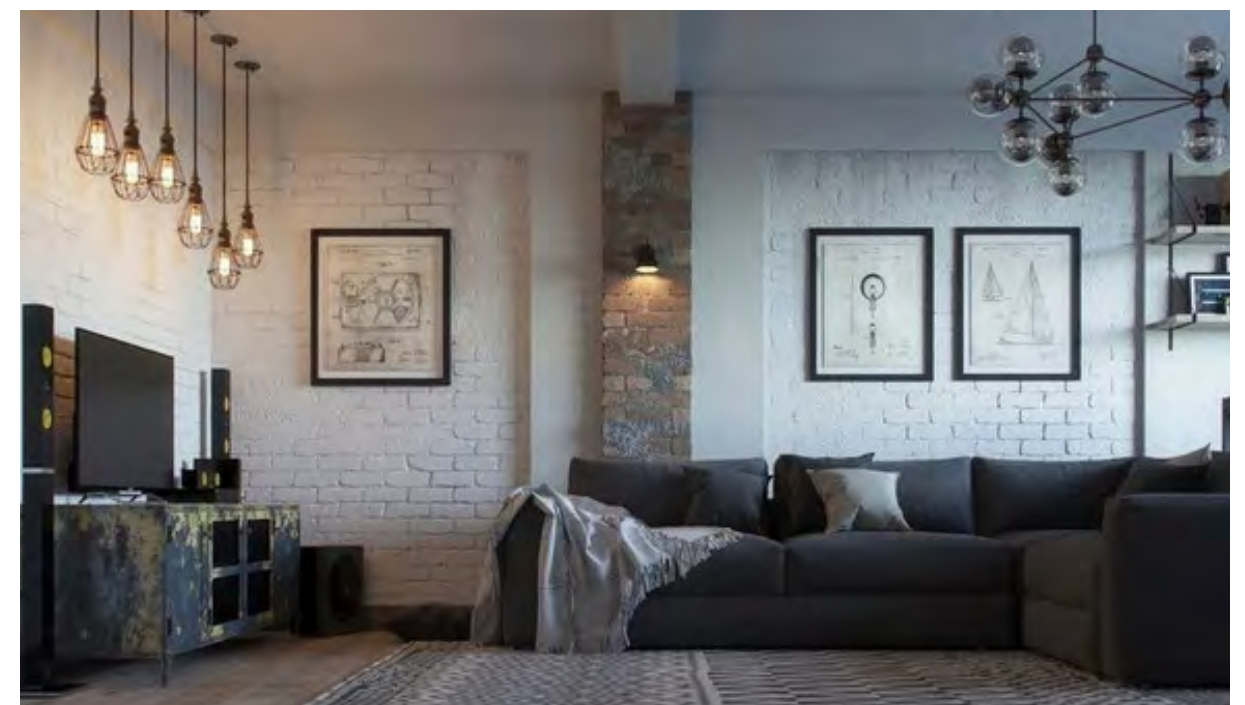
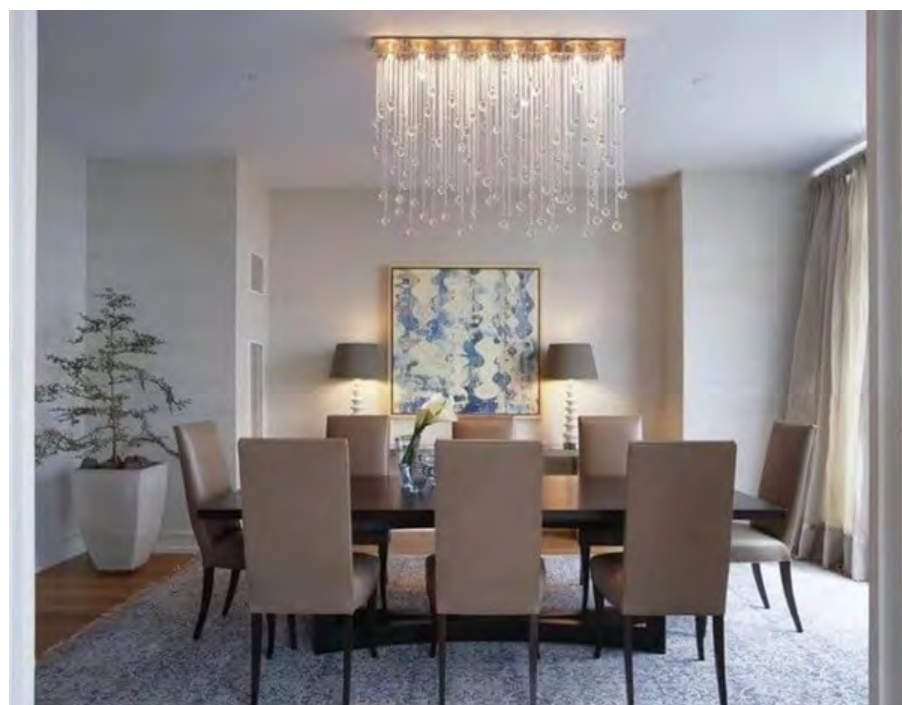
Research:

# 2021 Wall Sconce:





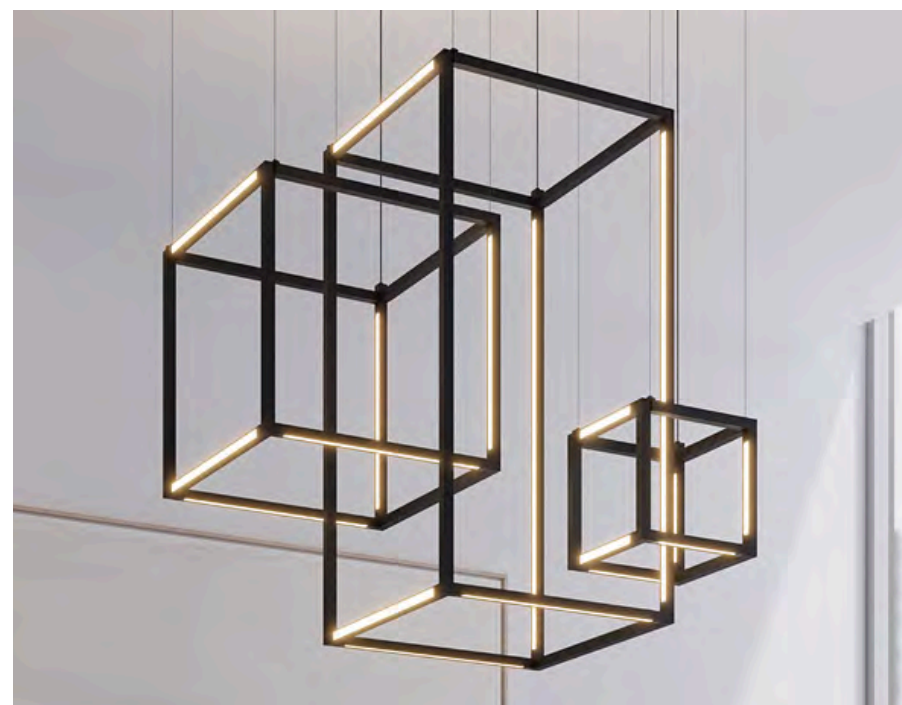
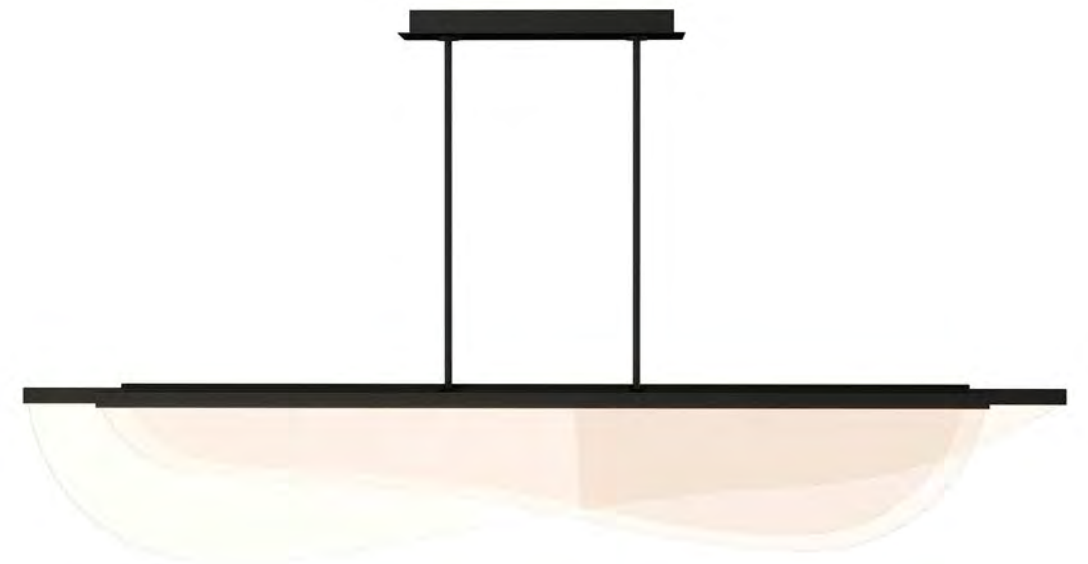
# 2021 Pendants:



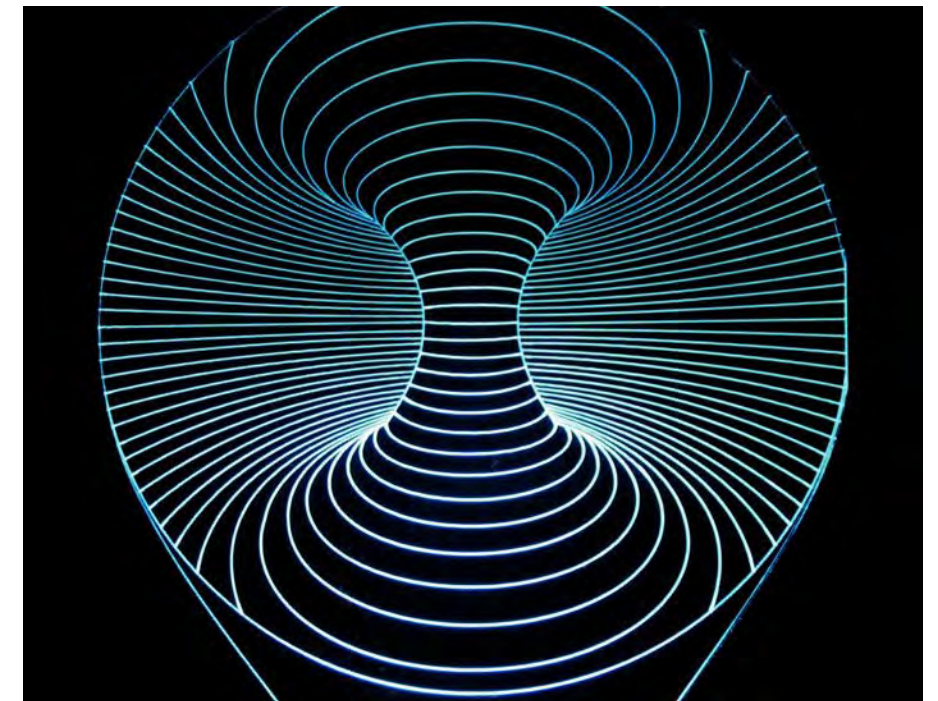
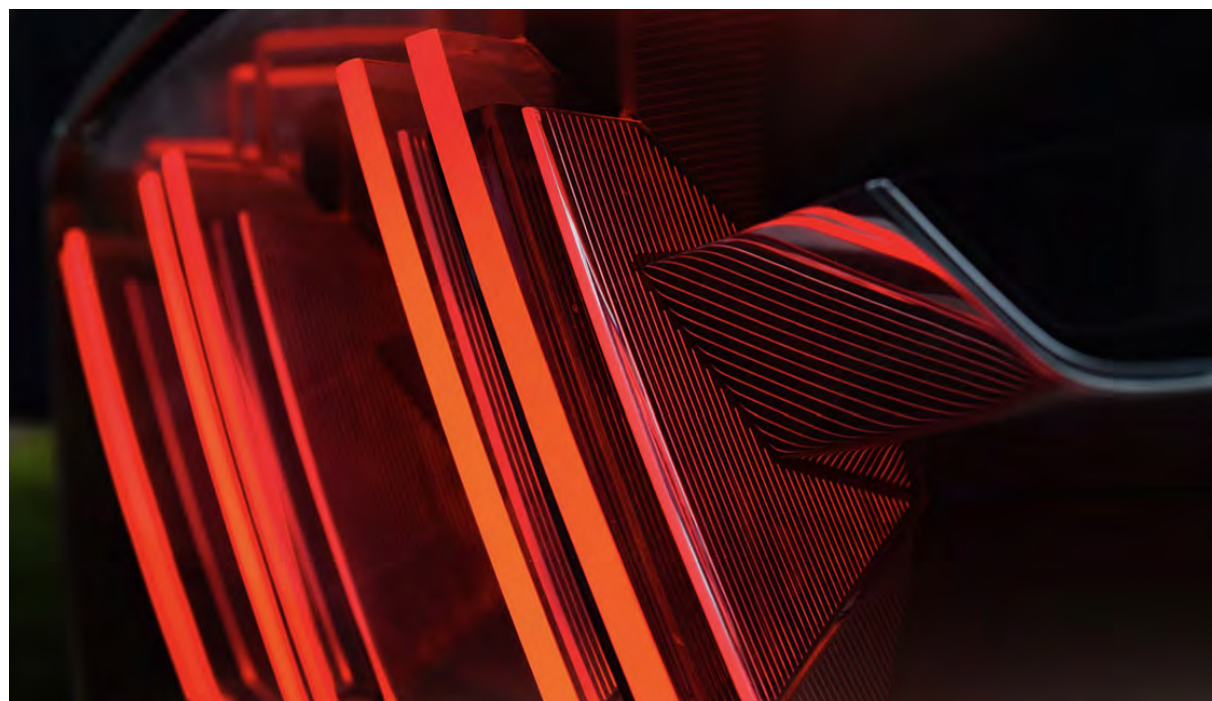
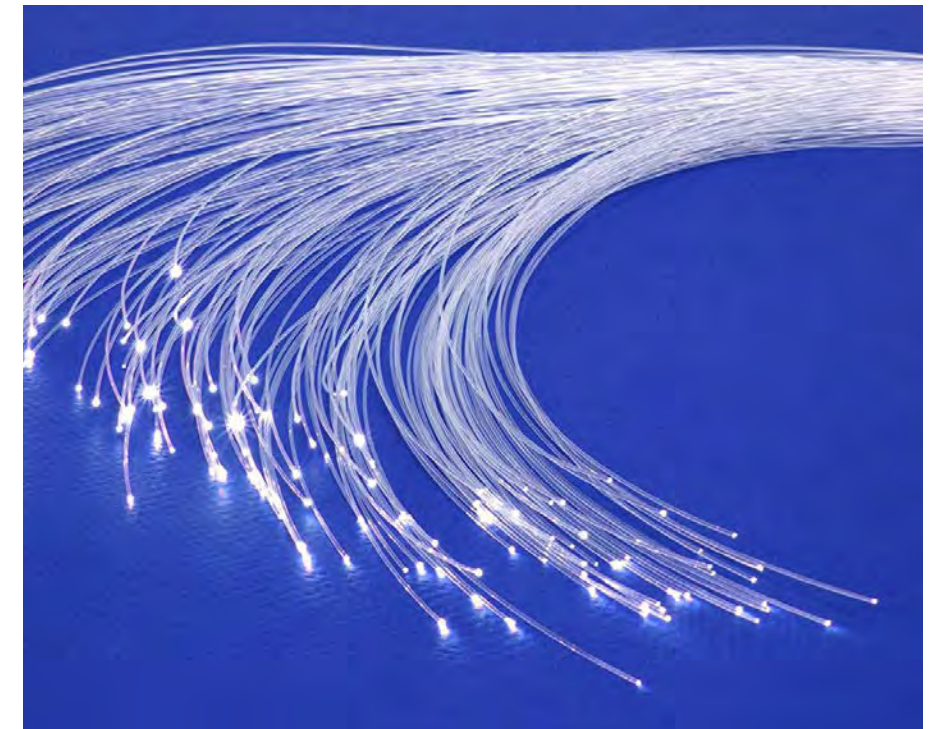


# Rethink Fixture Shapes: <sup>\_18</sup>

---





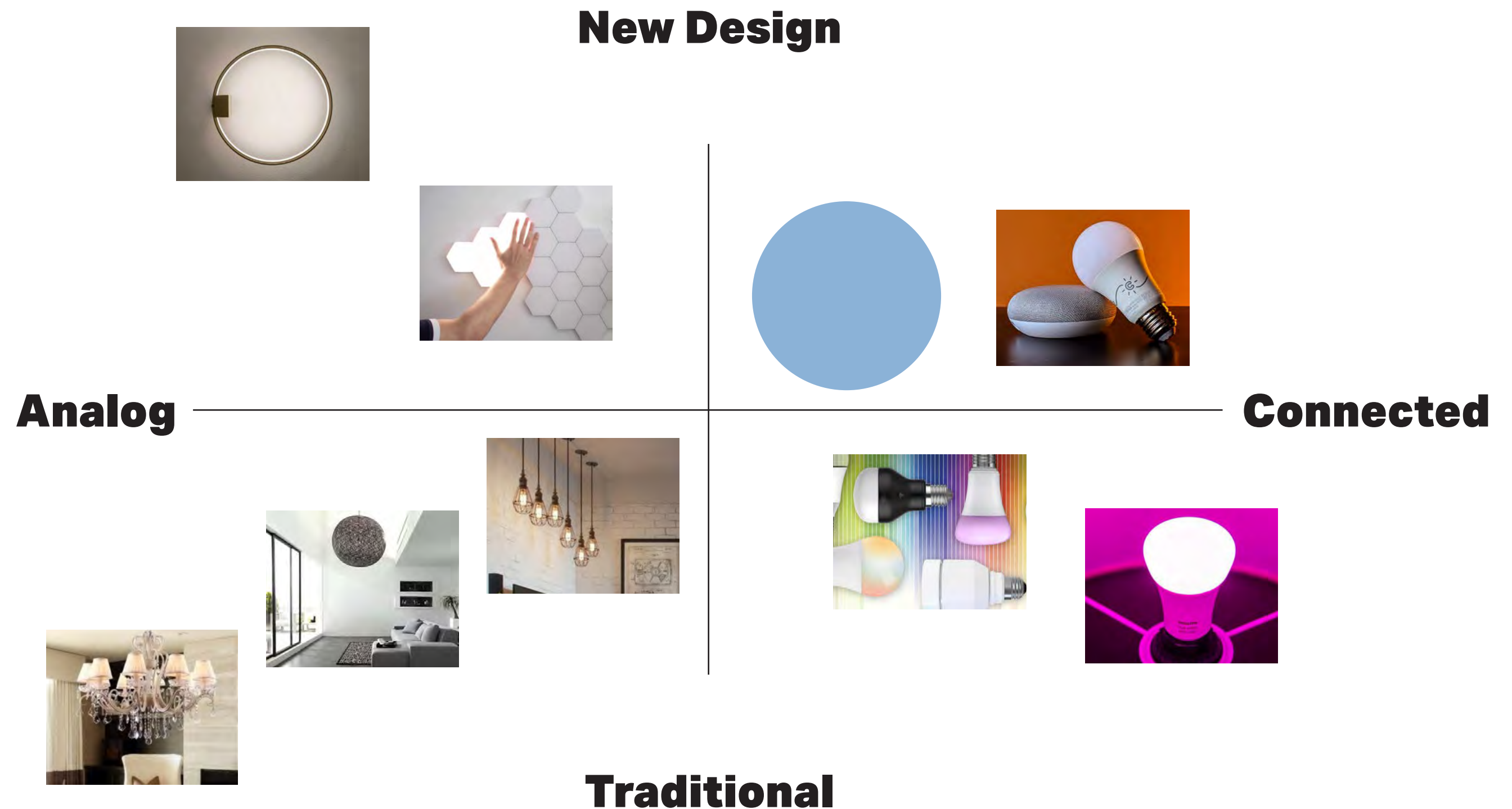






**Positioning:**

# Market Positioning: <sup>\_20</sup>







**Positioning:**

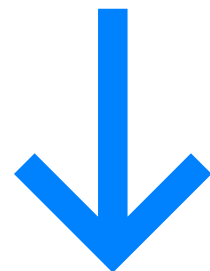
# Re-frame 1: Quality of Life<sup>21</sup>

---

**Quality of Life**

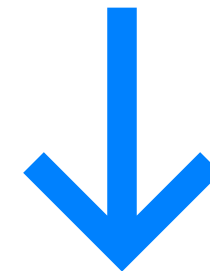


**Enjoyment of  
Living Space**



**Improvement of Lighting**

There is an opportunity to improve home lighting with existing technologies integrated together.

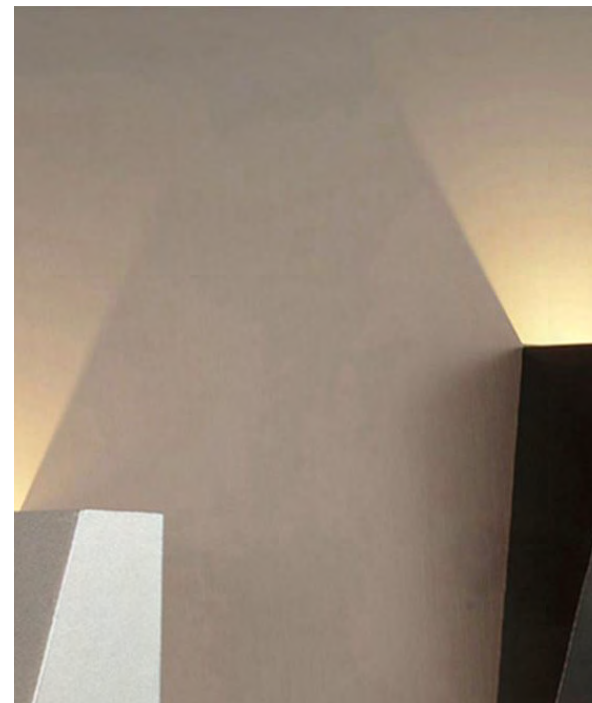
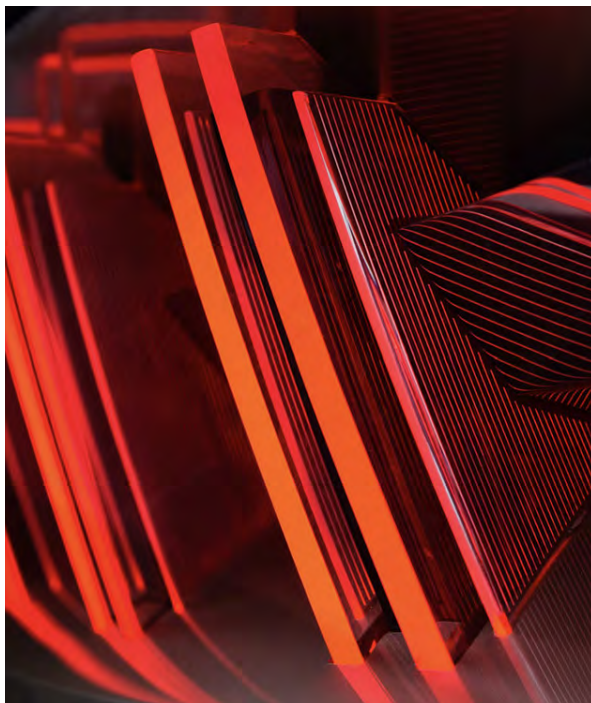
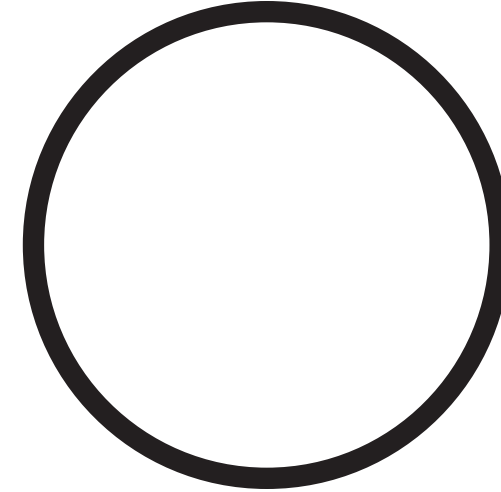
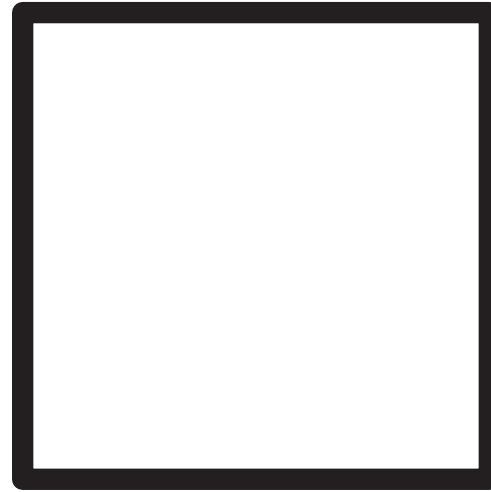
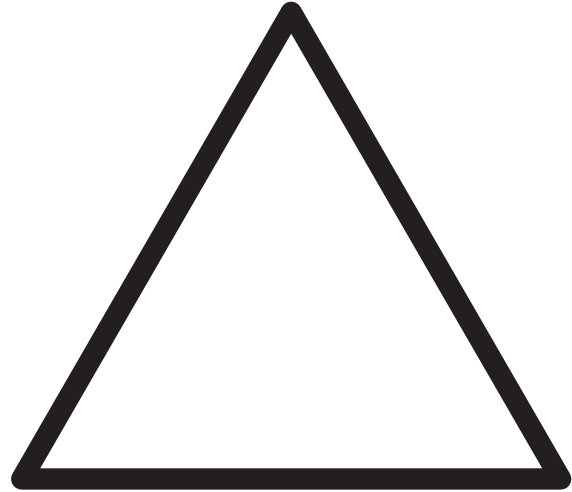


**How might I improve a person's quality of life through the lighting in their living space?**



# Trend Shape Families: <sup>\_22</sup>

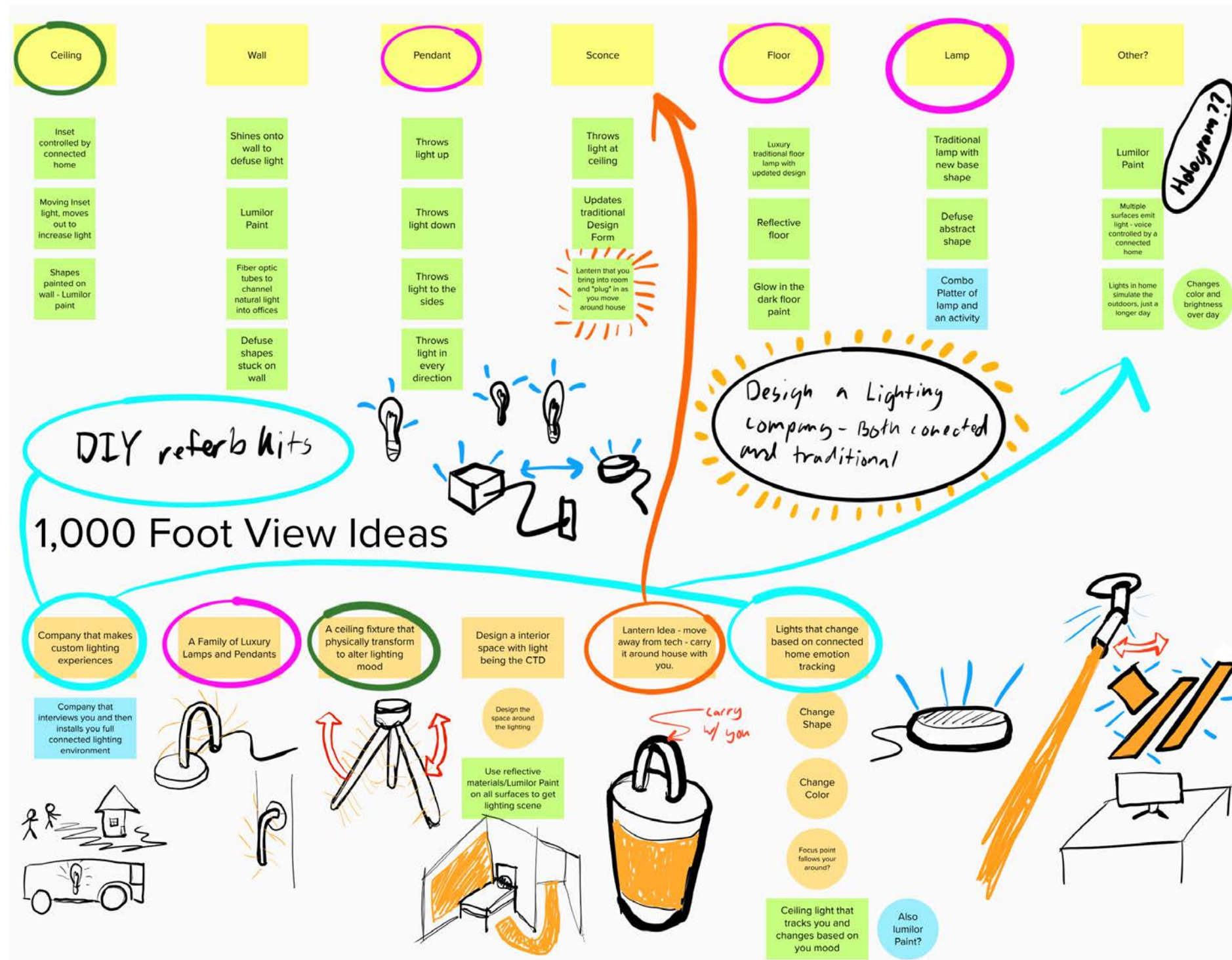
---





# Direction Narrowing:

## Concept Development:



## Lighting Locations:

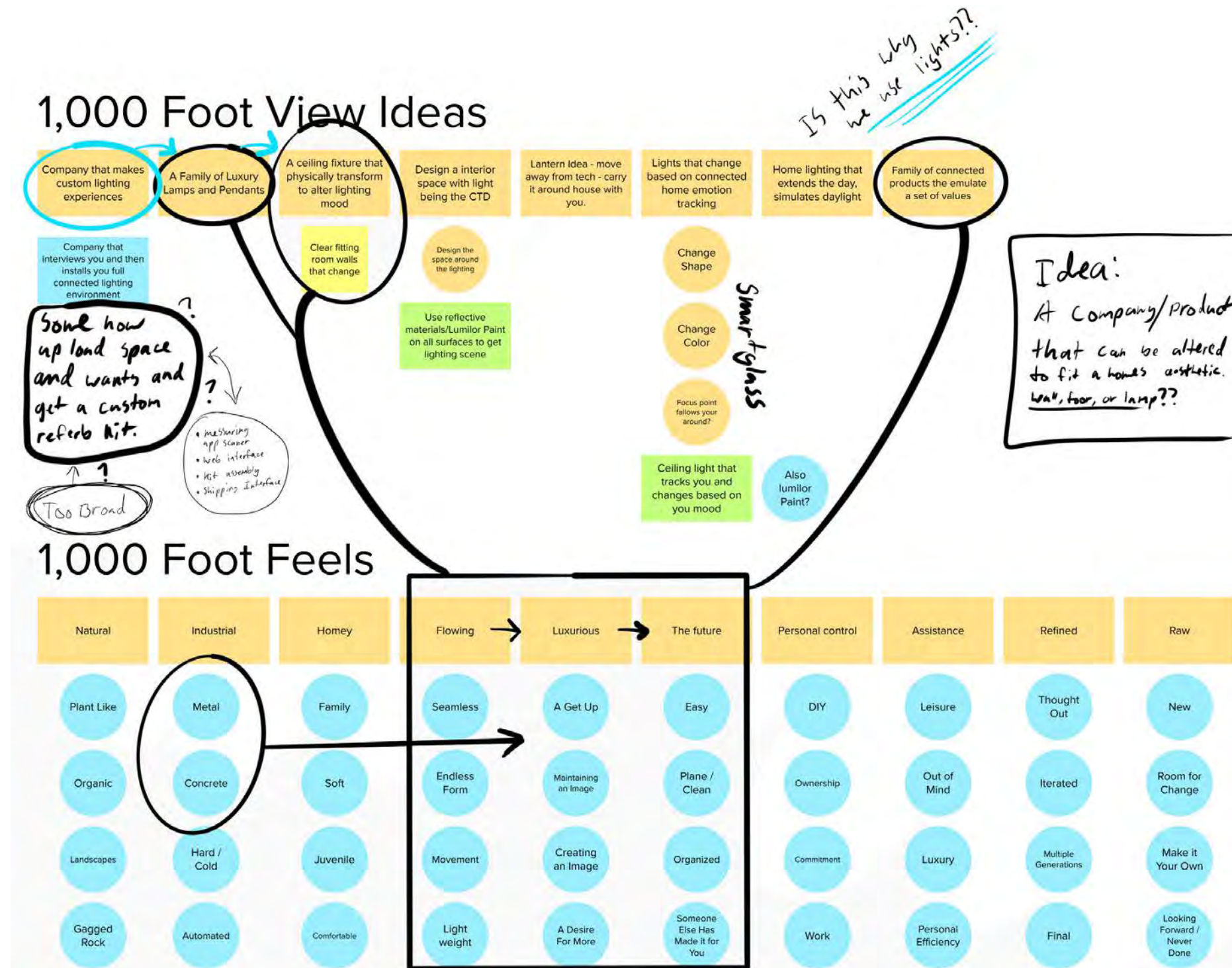
## Where does it live:

- Wall
- Ceiling
- Lamp
- Sconce
- Floor
- Other



# Emotional Adjectives:

## Concept Development:



## Critical to Design:

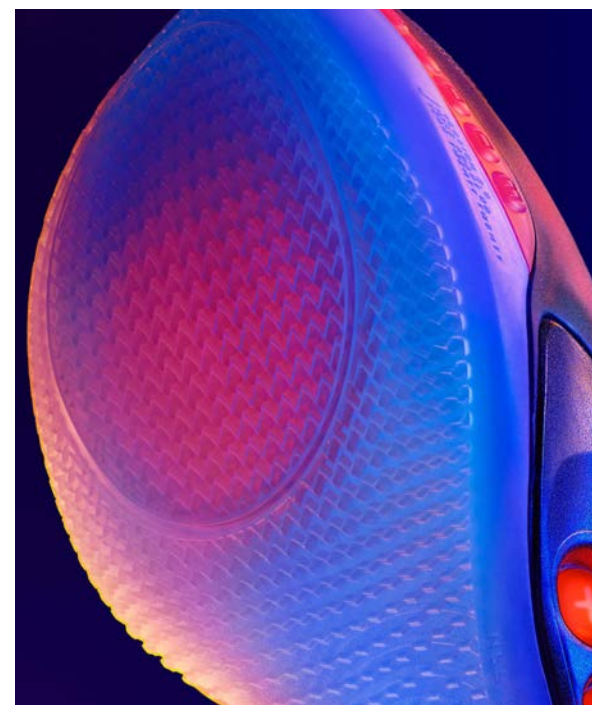
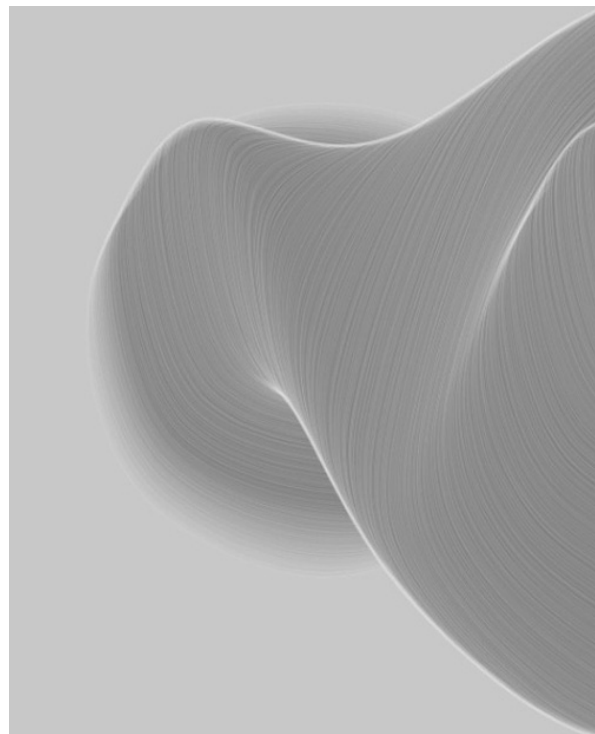
A simple, luxurious, forward-thinking way to bring lights and how they are controlled together cohesively.



**Concept Development:**

**Mood Reframe:**

**\_25**





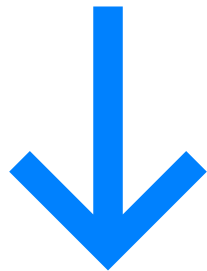


# Re-frame 2: Critical to Design<sup>\_26</sup>

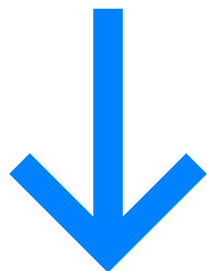
---

## Concept Development:

### Quality of Life

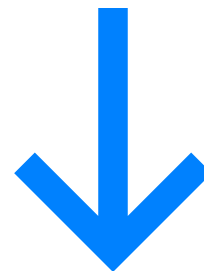


### Enjoyment of Living Space



**Improve lighting by streamlining controls in an easy and intuitive way**

There is an opportunity to improve home lighting with existing technologies integrated together.



How might I design a system to control home lighting to encompass both user perceived and unperceived wants?

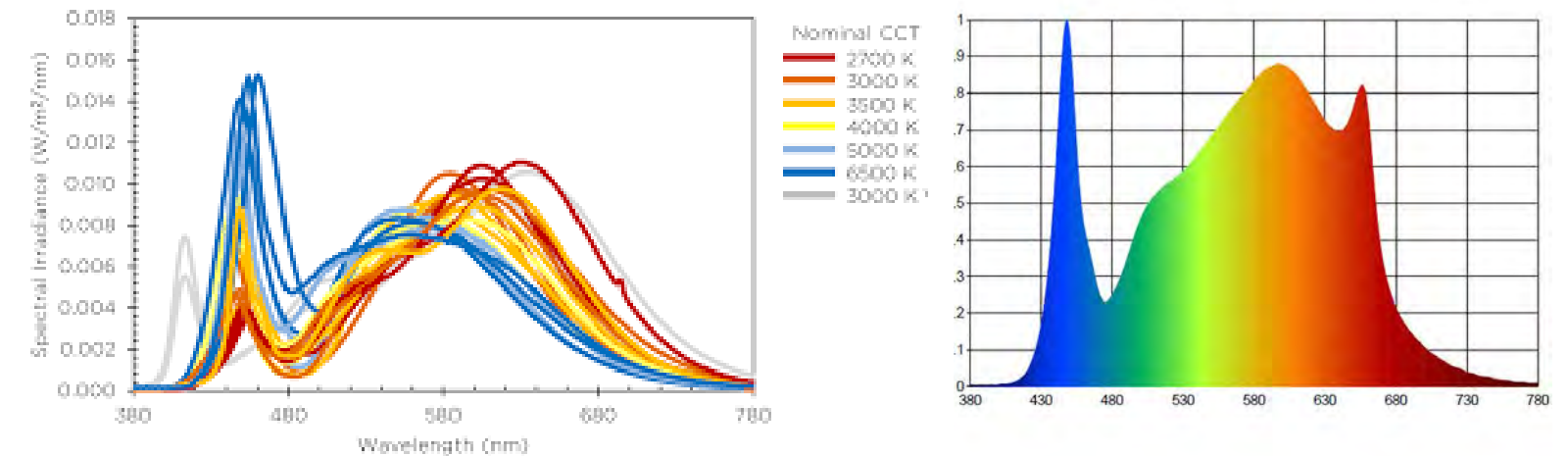
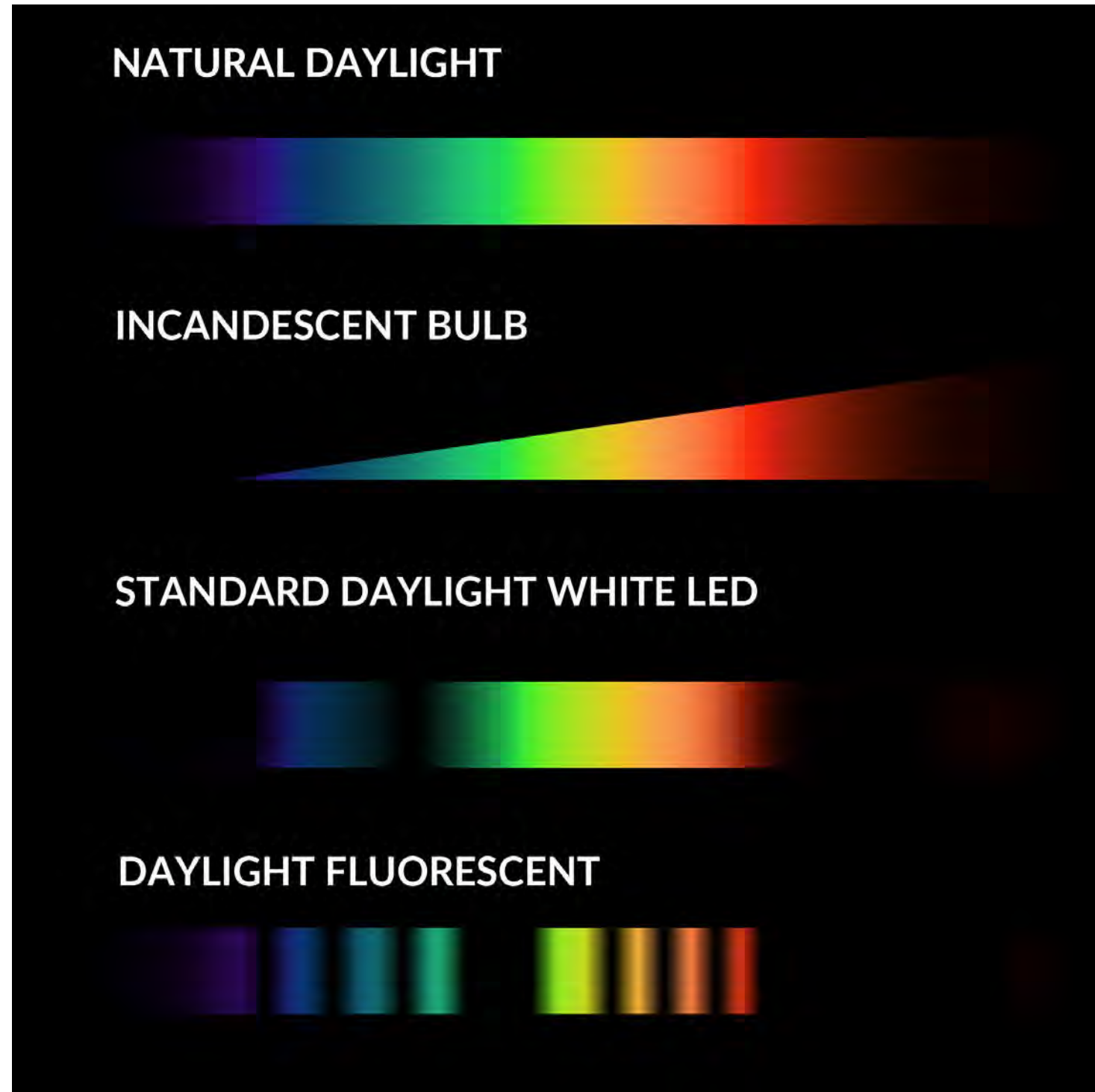
## Critical to Design:

- Big presents but not a space hog.
- Elements of traditional style but a new design aesthetic.
- Simulate natural light.
- Fit multiple styles of homes.



# Spectral Power Distribution: <sup>27</sup>

Research:



## Takeaways:

While incandescent bulbs produce the nicest light to look at they are the least efficient.



# Correlated Color Temperature: <sup>28</sup>

---

**Warm**

**Cool**



Candel Lights

Incandescent Light

Fluorescent Light

Overcast Daylight







**Research:**

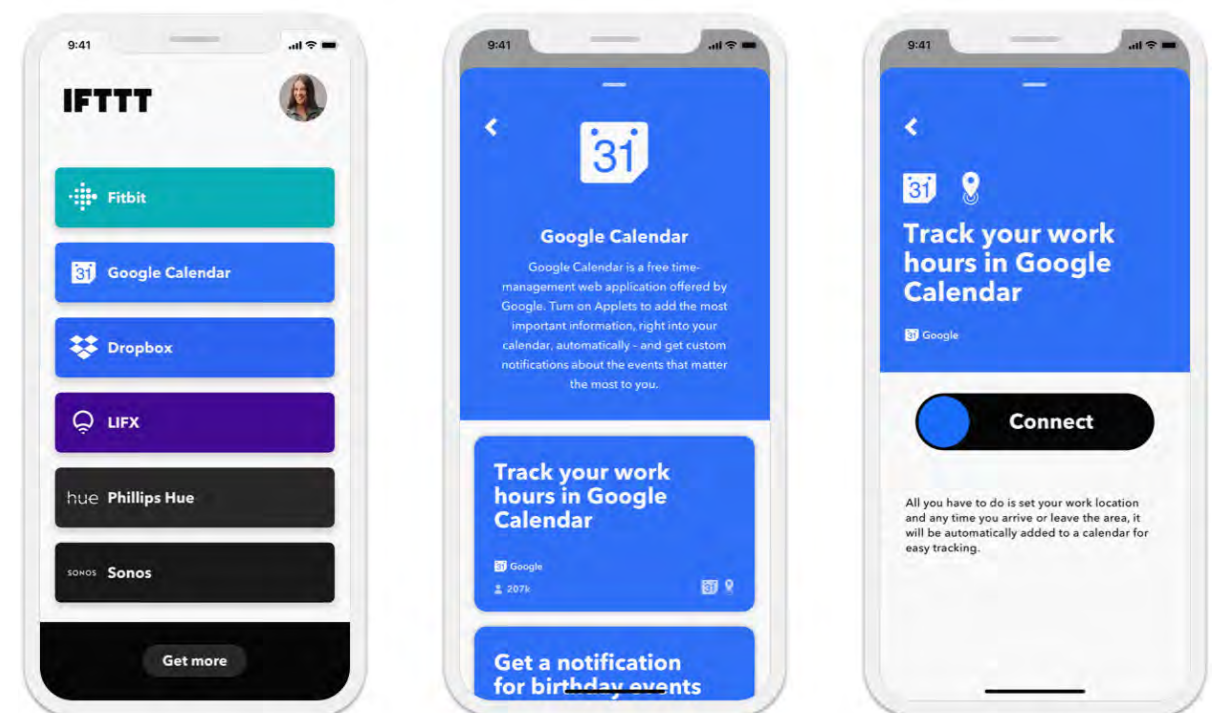
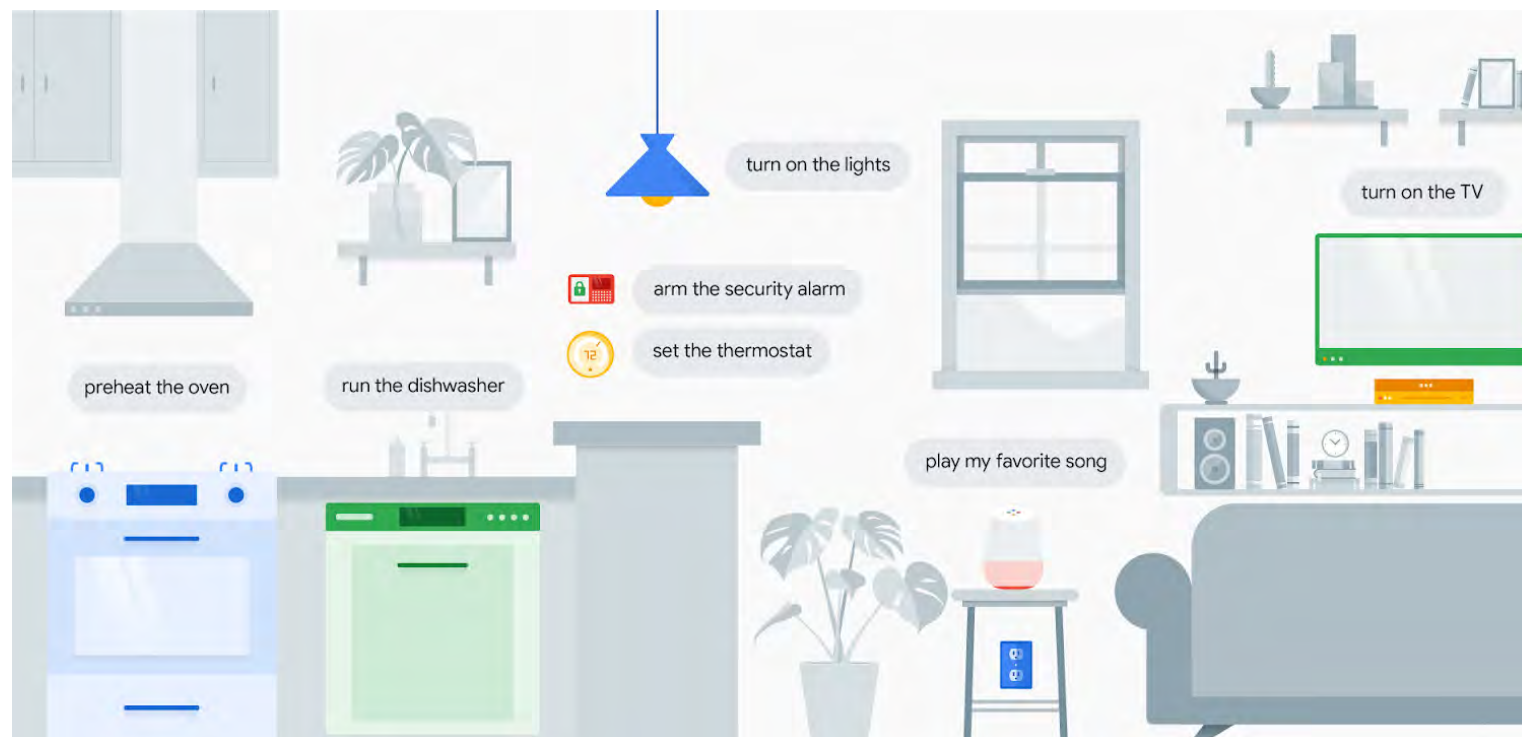
# Smart Light Pain Points: <sup>29</sup>

## Google Home:

- + Connects everything together
- + Groups controls in one place
- Voice or app-controlled only
- Automation is difficult to manage

## IFTTT: (If This Then That), App

- + Adds layers of personalized control
- + Increases automation
- + Ass more complected commands
- Clunky to use
- Only connects to certain devices

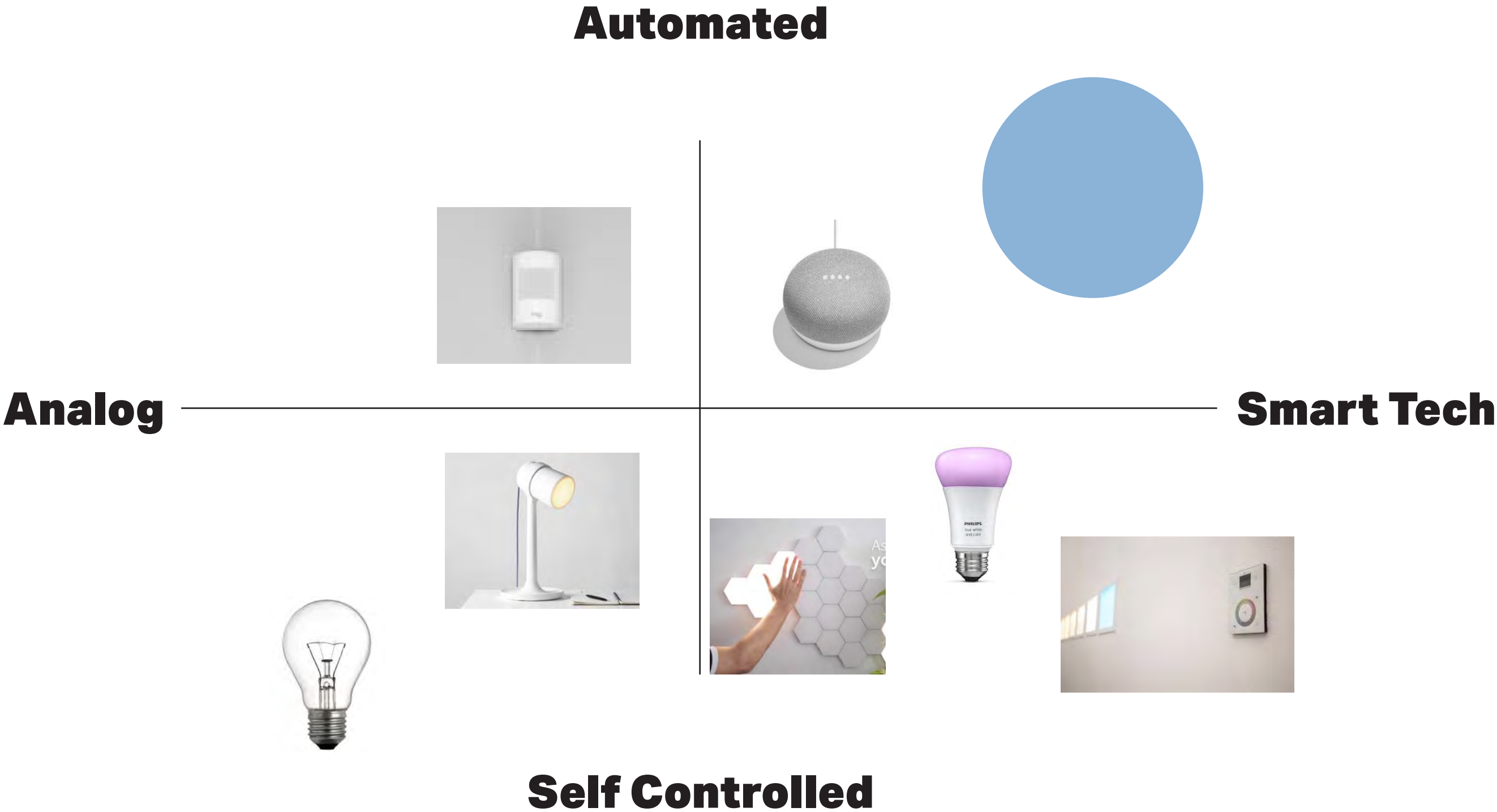






Positioning:

# My Solution: <sup>30</sup>







## Positioning:

# Re-frame 3: The Direction <sup>31</sup>

The solution is to connect all the background lighting products and control them through one automated system. This system will integrate with a Google Home or traditional switches as a way to have manual control. The solution aims to be a complete universe of home lighting products.

## Google Home:

Control specialty lights such as Philips Hue or lights you only have one sometimes.



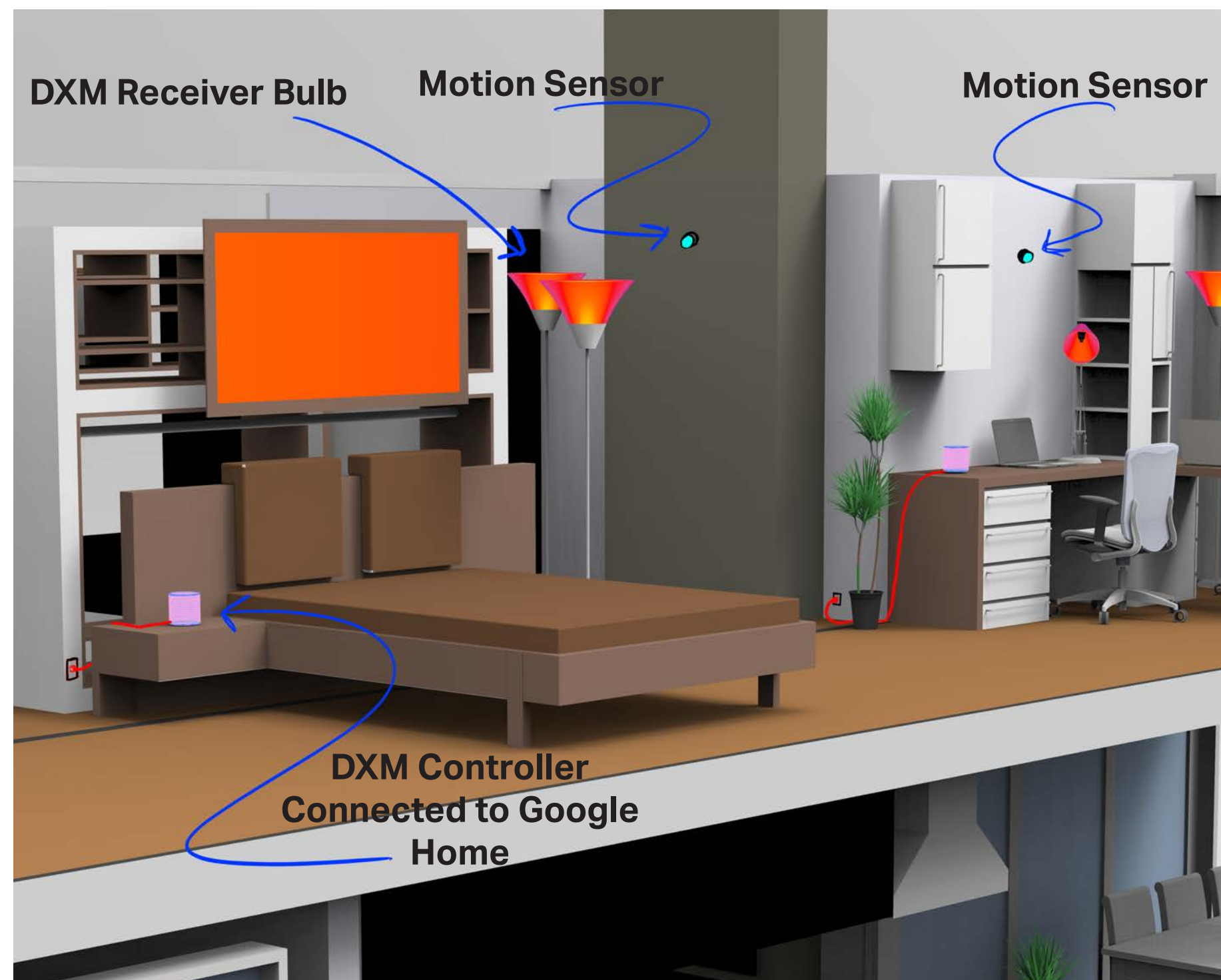
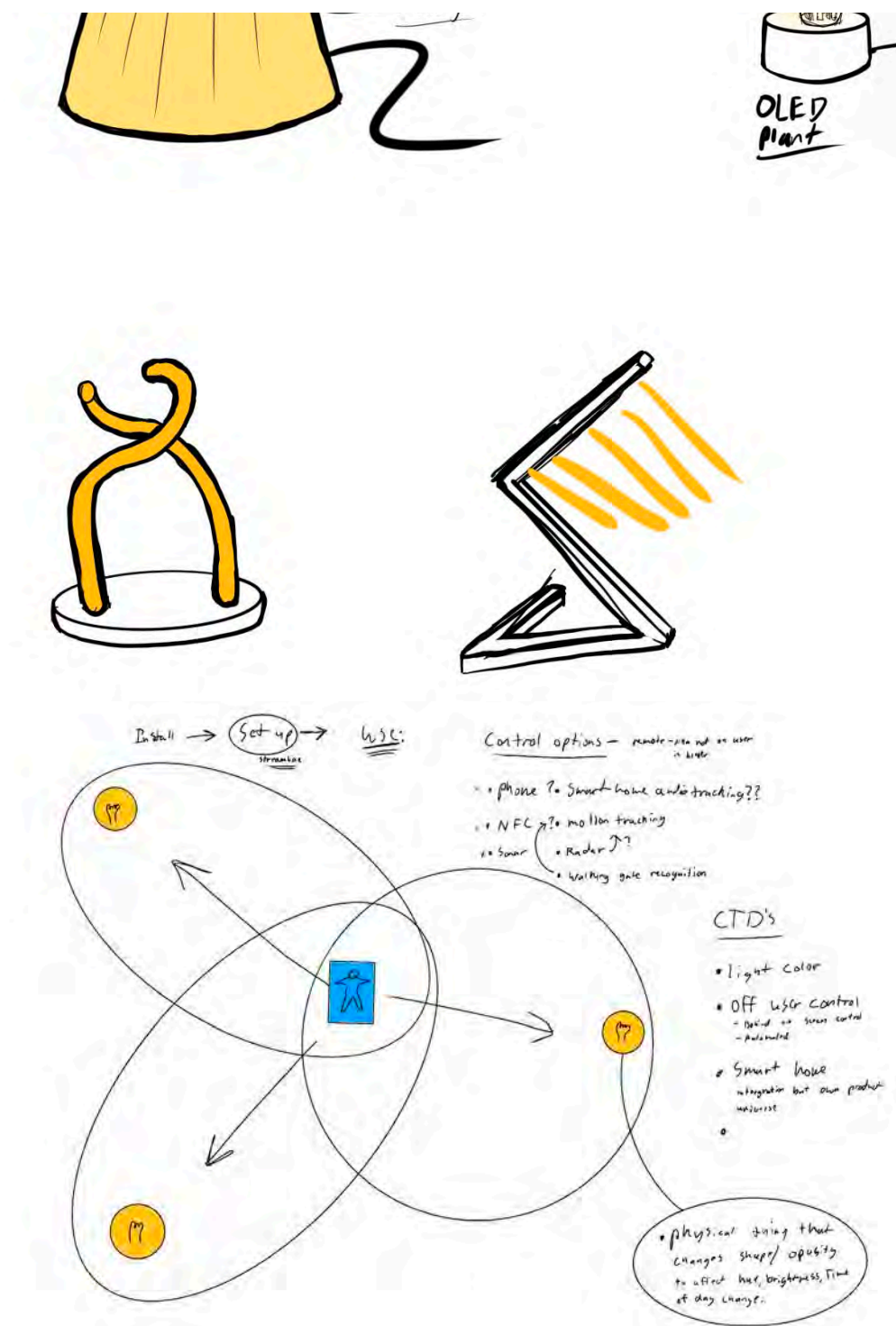
## My Solution:

Control all the background lights in the home, the ones that are expected to work without being the for-front of attention.



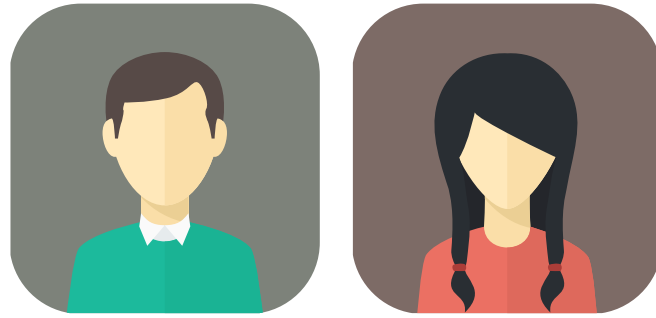
# Solution: 1,000 Foot View

## Concept Development:





## Concept Development:



What creates a good quality of life?

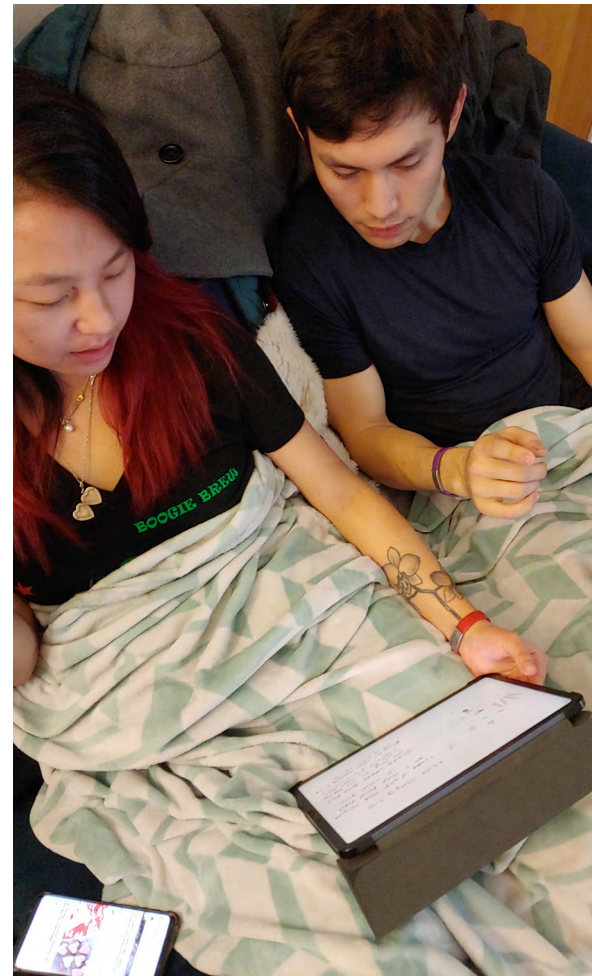
"... a nice coffee maker, filtered water in the refrigerator, pet help products, **lighting**, modular storage, airflow movable, and expandable furniture."

"I want (the things I buy) to last a while because I'm willing to pay for quality, but no willing to pay to much."

# Resonance Testing Part 1: <sup>33</sup>

## Interviewees: Nick and Lauren

They are curious to see the final solution and would be open to implementing it in there home based on cost.







## Subject Matter Expert: Matt

**Matt is a Senior Sale Engineer at Lumenpluse Lighting, a high-performance commercial, institutional, and urban lighting solutions company. I was able to visit their Boston office and observe how they work on large scale projects.**

### Why Matt?

Matt gave me a fabulous insight into this project and how to make it real. He showed me how Lumenpluse solves lighting issues for their clients and how larger-scale lighting technologies might be implemented in a home environment. He also helped me understand the technology running behind the scenes with lighting control.

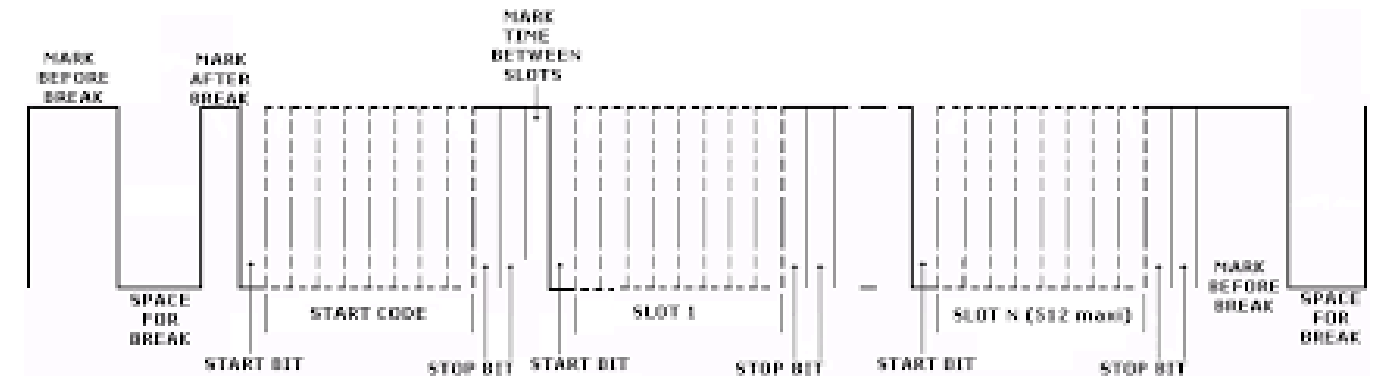




# DMX Lighting Control: <sup>35</sup>

## What is DMX?

DMX (Digital Multiplex) is a way to control lights or other devices through the power-lines in your home. The DMX controller sends signals through the power-line wires which triggers only devices equip with DMX receivers, all other devices attacher to the power-line are unaffected.



## Why DMX?

DMX control is perfect for this solution because adding it to a house does not affect other devices connected to power in the home. A lighting system controlled by DMX input can run independently of other control methods meaning it can run in the background and only be controlled if need be.

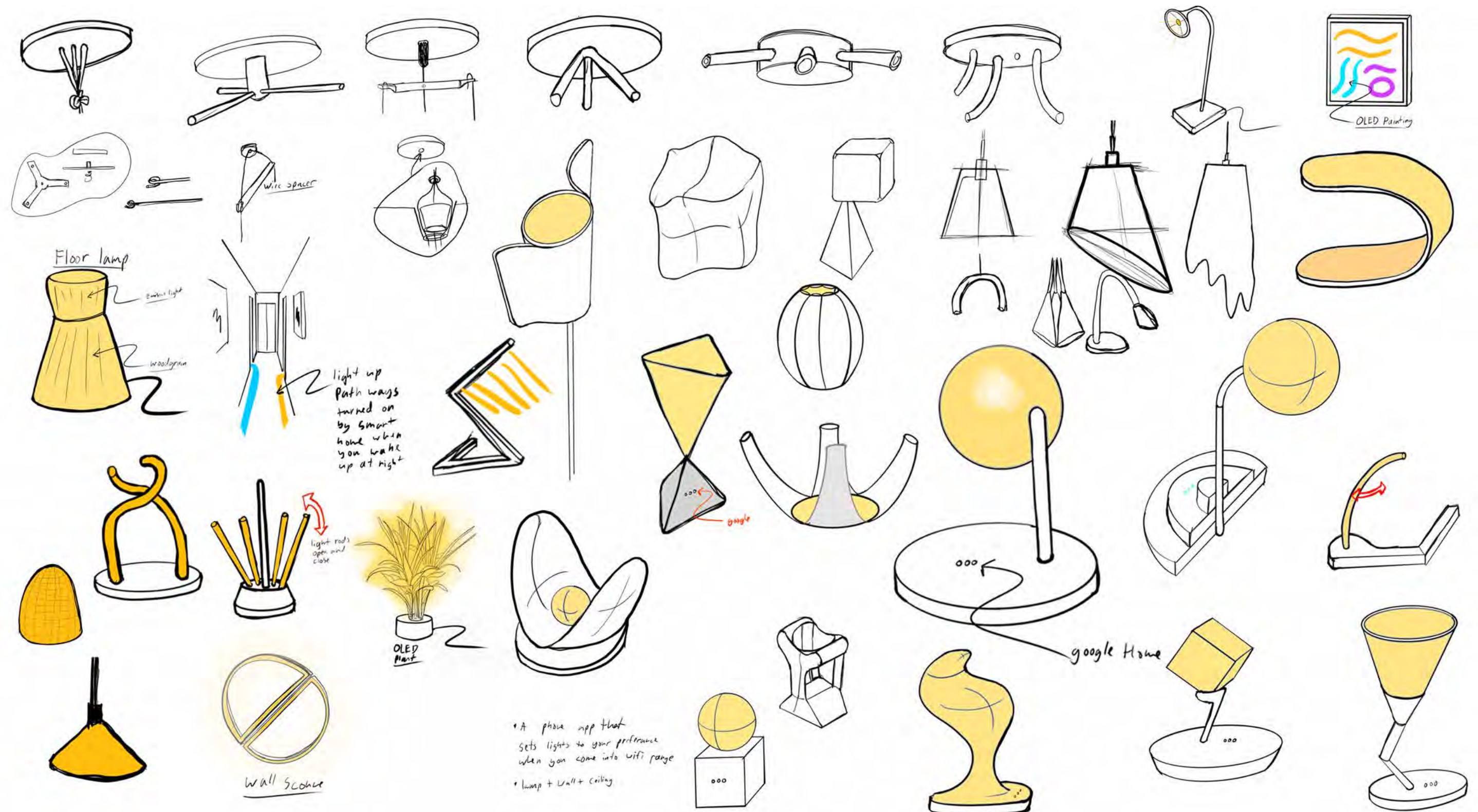








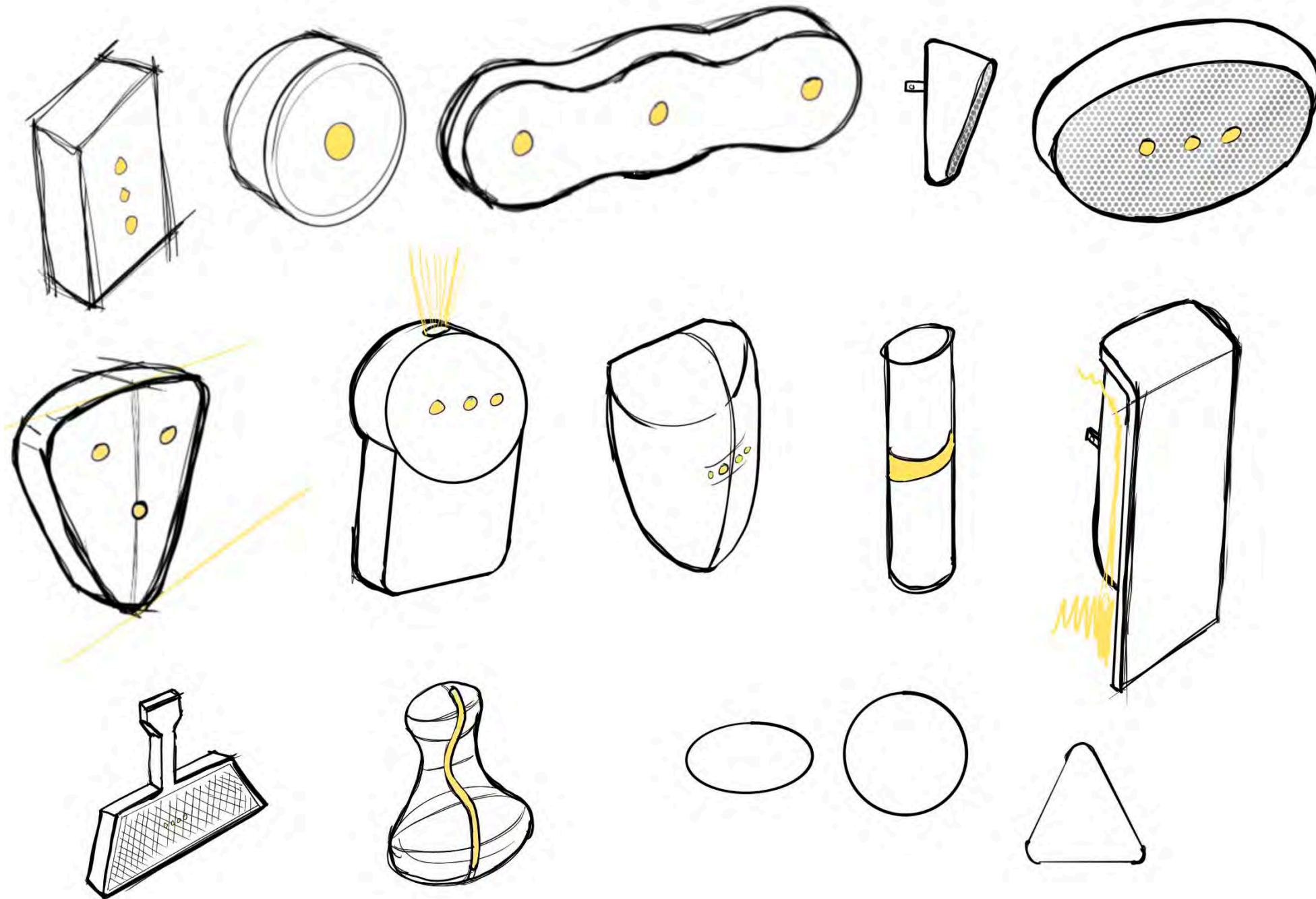
## Ideation:





# Form Exploration Round 1: 2D<sup>38</sup>

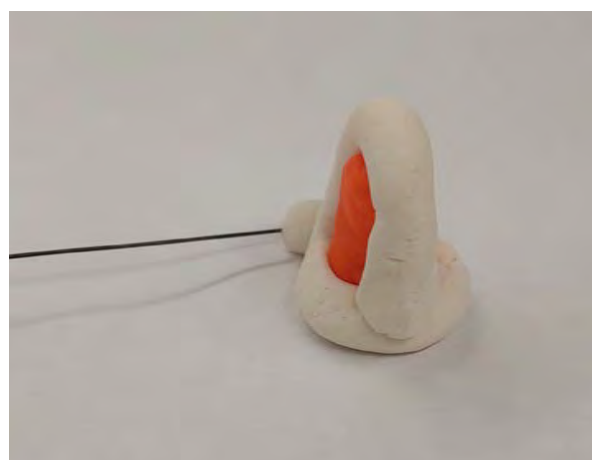
---



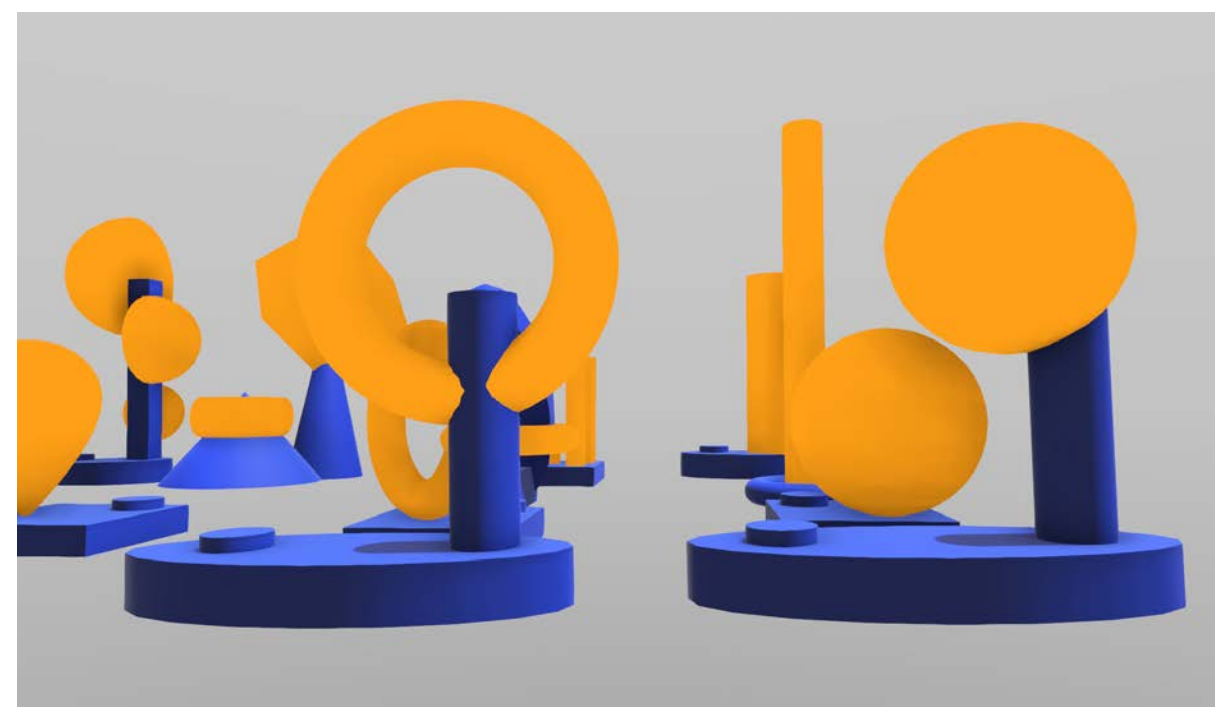
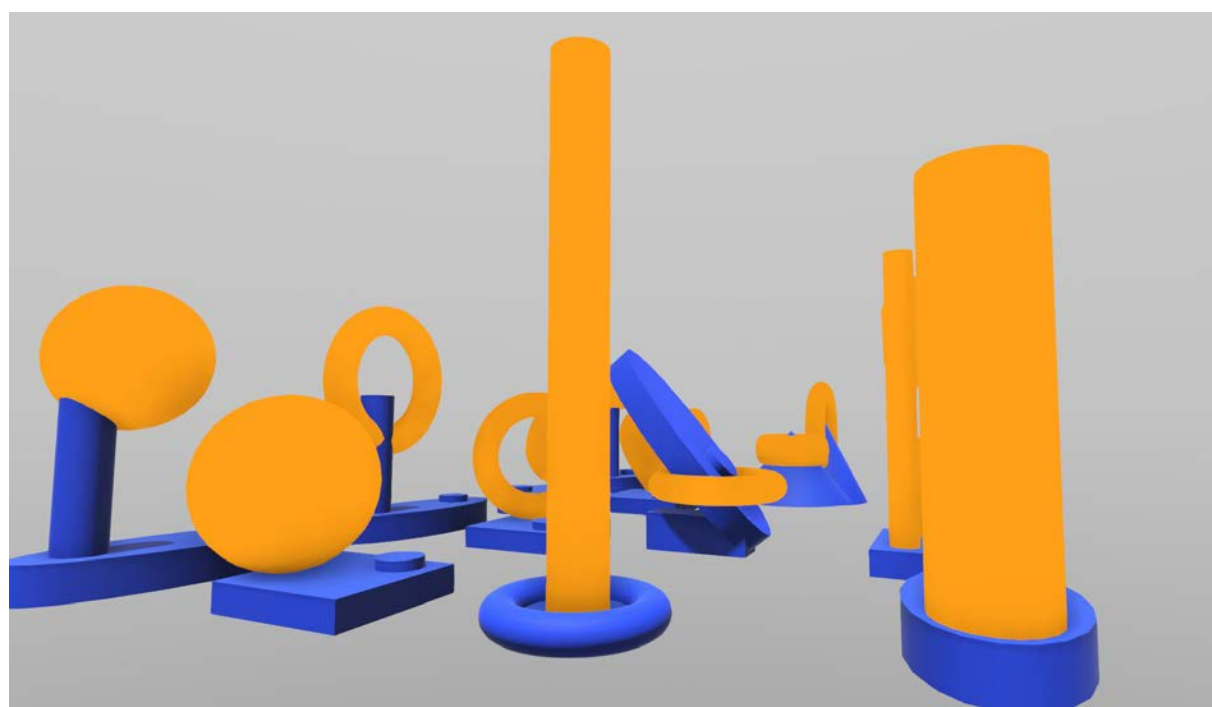
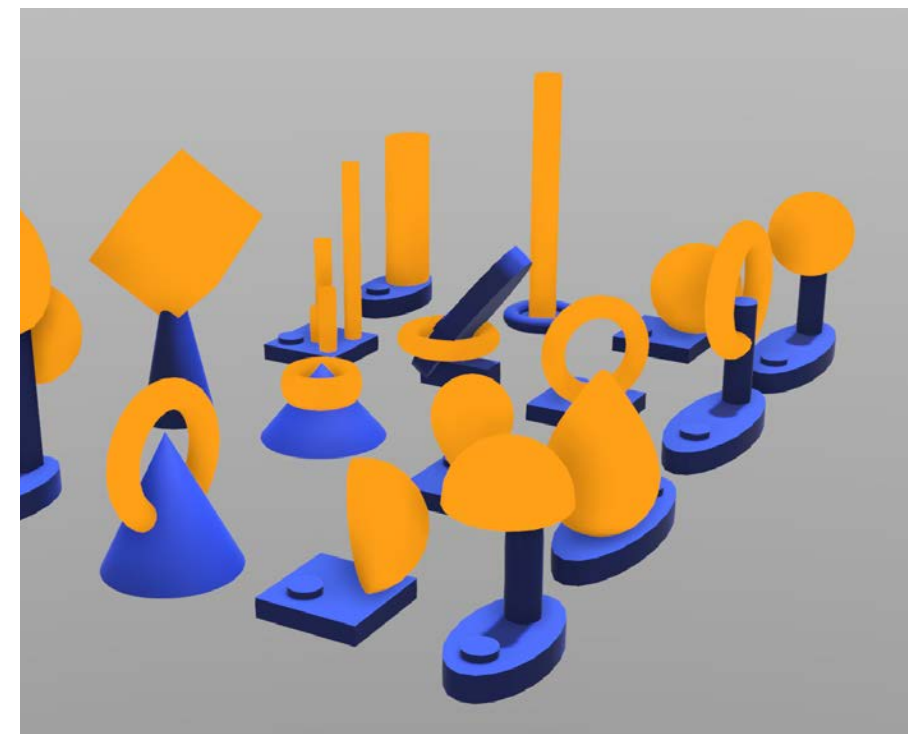
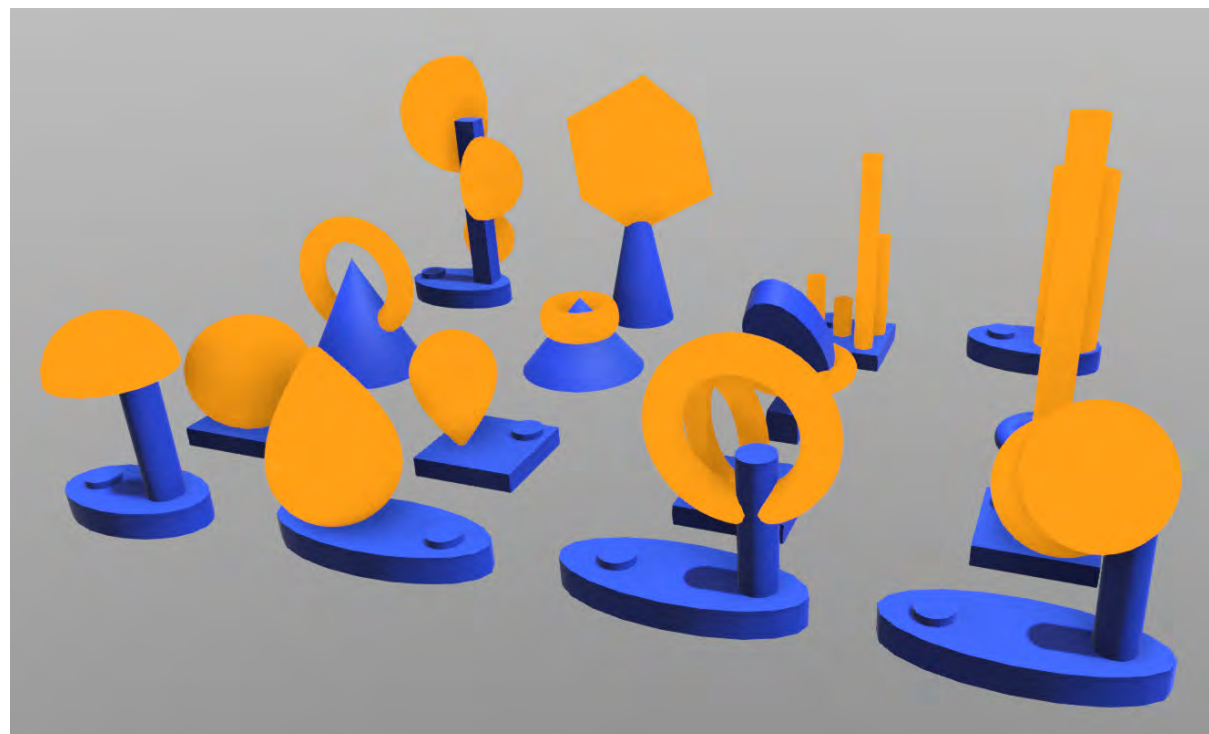
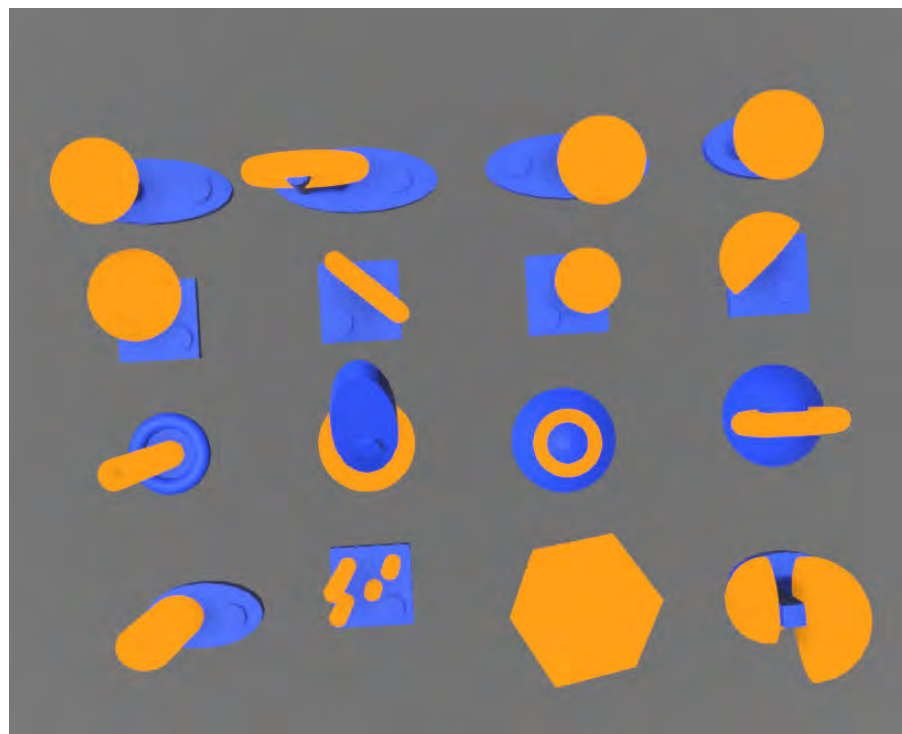


# Form Exploration: 3D<sup>39</sup>

---









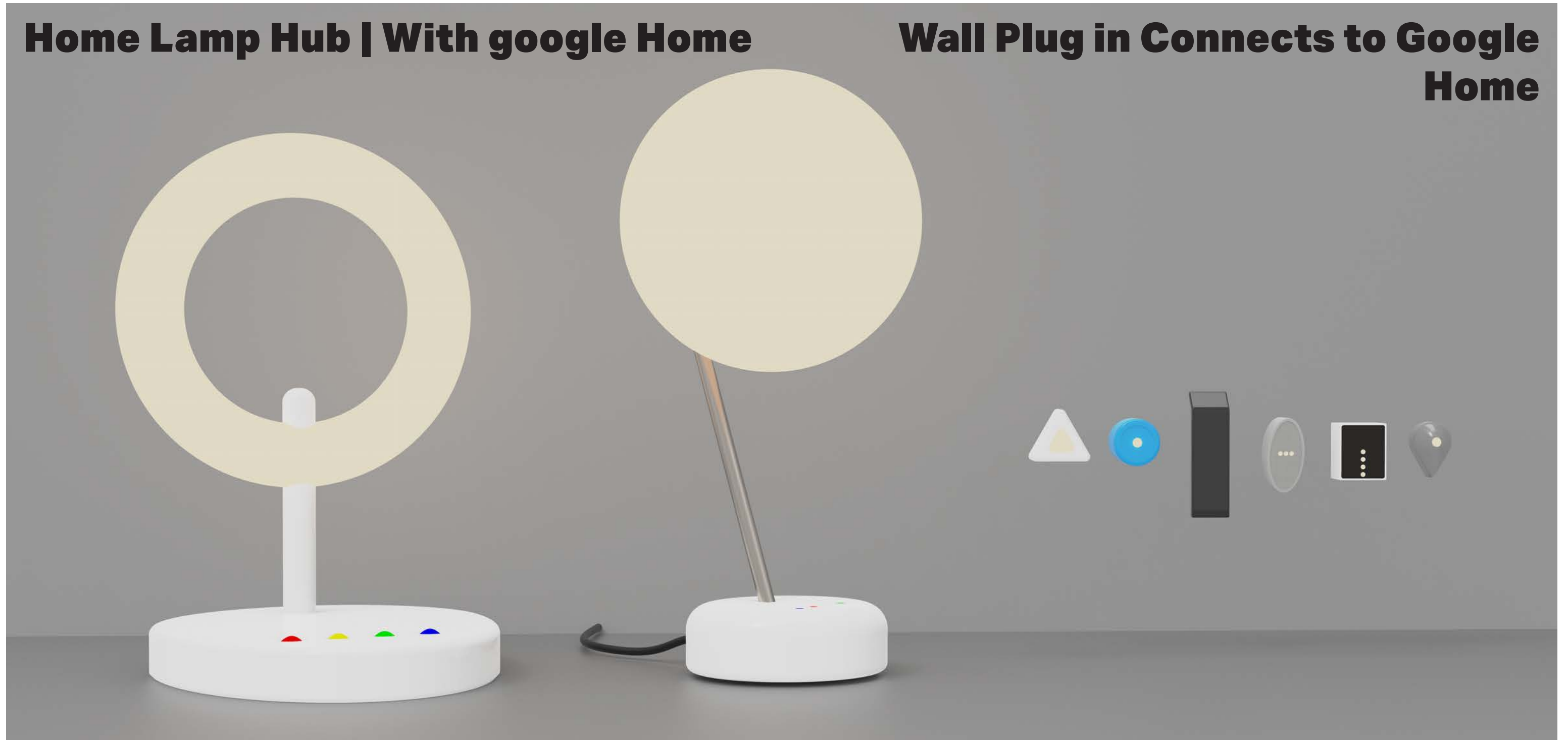
**Ideation:**

# DMX Controller Down-selecting: <sup>41</sup>

---

**Home Lamp Hub | With google Home**

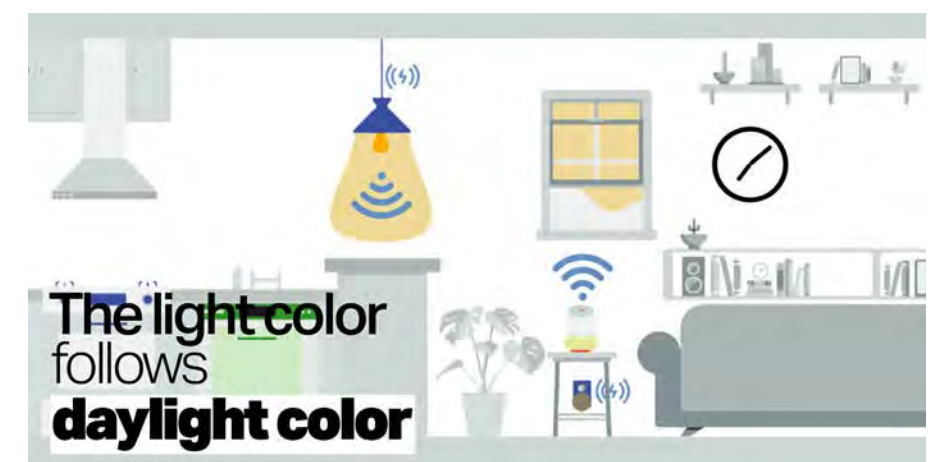
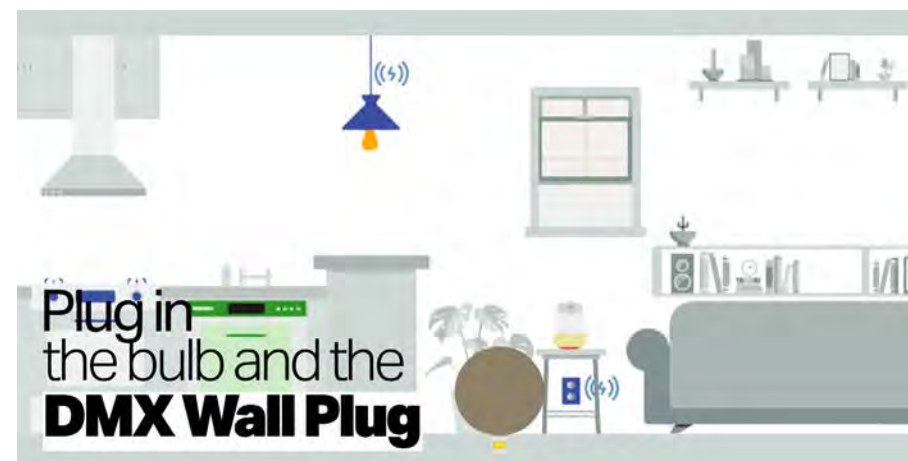
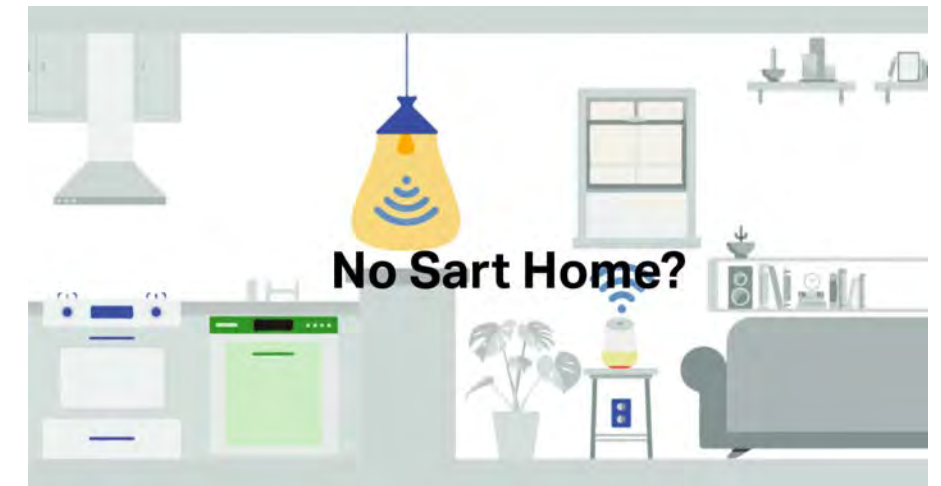
**Wall Plug in Connects to Google Home**





# How it Works:

## Concept Development:

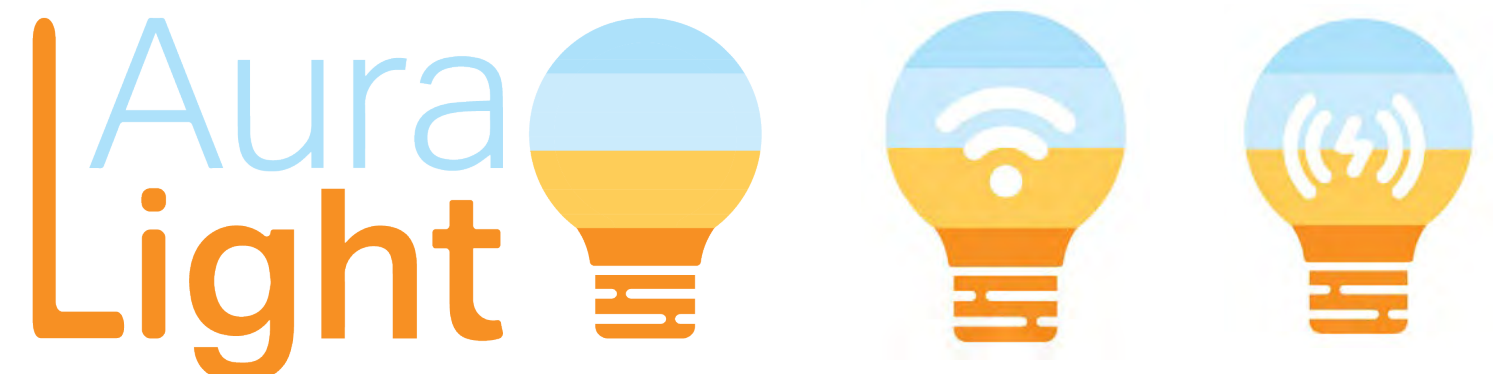




# Names / Logos: <sup>43</sup>

## Concept Development:

Vivify  
Invigorate  
AutoLight  
Lite  
DayBulb  
Light Spectrum  
Luminous  
Day Color  
Clear  
Cleir  
Aglow  
Resplendent  
Luminocity  
Lumahome  
Lumanature  
LumiHome  
Luster  
LusterBeam  
LusterBulb  
Luminescence  
Sunbeam  
Shimmer  
Flare  
Aureole  
AuraLight

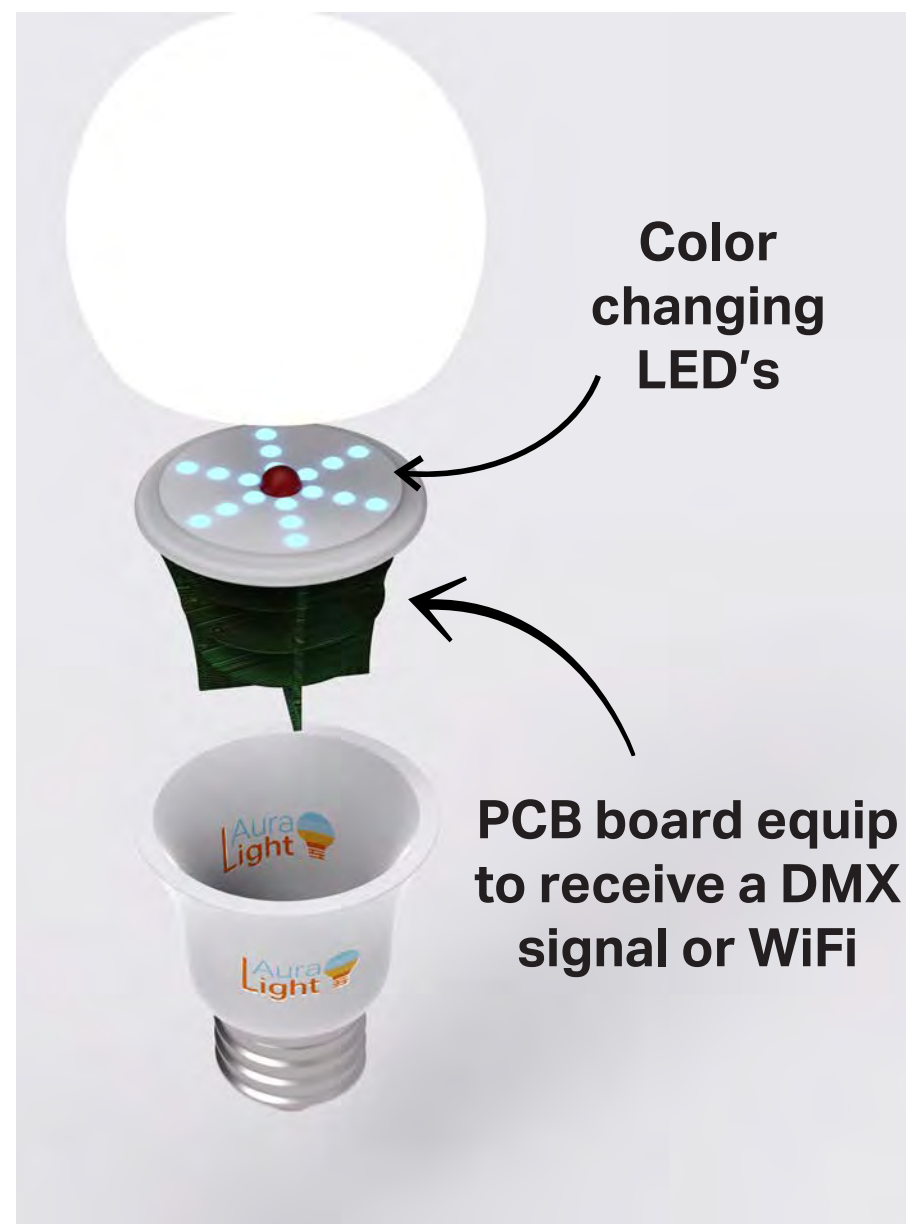








## Concept Development:



## An Ah - Ha Moment:

It is possible to move the motion sensor into the bulbs, creating a larger motion sensing field and reducing the number of devices needed.

# Bulb Design: <sup>45</sup>



## Bulb Redesign:

The bulbs in this universe of products are similar to current smart bulbs, except they receive a DMX signal instead of being controlled by wifi. They are LEG color changing-bulbs.

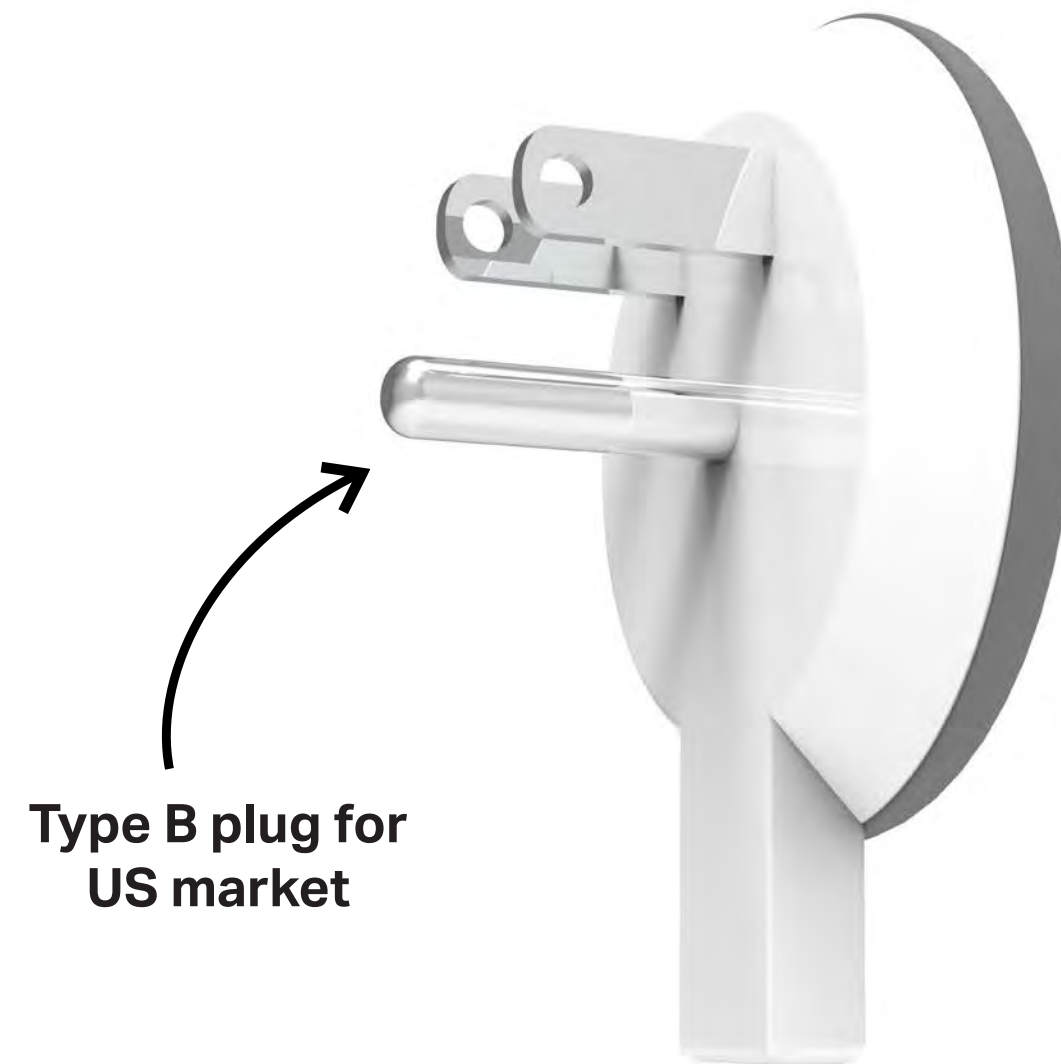




**Ideation:**

# <sup>46</sup> **DMX Controller:**

---





**Concept Development:**

# The Packages: <sup>47</sup>

---





Aura  
Light

