

RESTLESS LIVING

"...restlessly dedicated to contemporary living."



VOLUME 138



CORBY HOUSE

Balwyn North, Victoria, Australia

In Melbourne's neighborhood Balwyn North, a broad mix of design styles are represented; from French provincial homes to older brick veneer homes. To provide the clients with a modern and sophisticated home, the Australian architecture firm R Architecture set out to design the Corby House as a future benchmark for the local area where many new homes are being built.

"The inspiration for this project was to design an elegant and sophisticated family home, suitable and flexible for various family dynamics. Whether it is a young family or a multi, generational family, the concept was to provide a home that was flexible and provided multiple living spaces, enabling people to have their own space as well as come together", Director at R Architecture, Gaurav Rajadhyax, says. While the brief seemed relatively straightforward, the site's slope presented a challenge. "The building cascades down the slope, breaking up the ground floor spaces into three levels which creates zones within the floor plan and more interesting spaces. A central entry with double height ceilings and feature stair splits the house creating separation and privacy between the living and sleeping spaces. The stepping of the site also allows for large 4m high ceiling in the main living space", Gaurav explains.



4



CORBY HOUSE



5



Since Gaurav and his team “did not feel like the local context had a lot to offer”, the style for the house was designed exclusively with Corby House in mind. “A simple and elegant palette of stone and dark stained timber batten cladding provides a sense of luxury to the front facade. That is balanced by metal accents and cascading plants and complimented by polished concrete render and black panelized cladding, results in a modern and sophisticated exterior finishes palette”, Gaurav notes.

In essence, Corby House perfectly embraces the needs expected from a family while also allowing the parents to confidently maintain their relationship in privacy. The flexibility of spaces makes the Corby House incredibly durable in all aspects of life, giving the inhabitants great opportunities to use their home as they see fit. At the same time, timelessness is secured both in terms of style and layout so even future inhabitants will be able to comfortably inhabit the place from day one.

Architecture by **R Architecture**

Photography by **Axiom Photography**





VICTORY RANCH HOME

Kamas, Utah

Just outside Salt Lake City, the mountain retreat named Victory Ranch Home has been designed to provide comfort and space for memories; where families can be together, enjoying the company of one another.

“The design fosters connection and gathering, with the kitchen, dining room and living room flowing easily from one space to the next. Within the generous capacity of the structure, the thoughtful design maintains the intimacy of a smaller space”, architect Warren Lloyd says. In an attempt to fully embrace the rolling hills of Victory Ranch, the striking mountains of Deer Valley, and the beautiful native grasses of the land, “the home sits quietly in the landscape from the front elevation making an approachable, comfortable experience walking towards the entry.” With simulated steel windows, the design also includes subtle details that do not impose character on the space but allows full visibility of the landscape as well as easy outdoor access. “As the home opens up, there is a striking reveal on the back elevation, capturing a panoramic view of the mountains and the skyline”, Warren notes. Throughout Victory Ranch Home, Lloyd Architects sought to renew the traditional idea of a mountain home. “The style is a contemporary take on a mountain home – architecture that is timeless and feels effortless. It honors the pallet of the surrounding nature and the people who live inside”, Warren explains.

In sum, the Victory Ranch Home is a place to experience together. The generous spaces are perfect for large family gatherings where each individual feels welcome. At the same time, the natural rusticness of the building grants a special sense of character and atmosphere which are too often lost in similarly large houses.

Architecture by **Lloyd Architects**

Interior design by **Studio McGee**

Photography by **Melissa Kelsey**





FOG HOUSE

Bezerros, Brazil

Inspired by the Brazilian Armando de Holanda's book 'Roteiro para Construir no Nordeste' (in English: 'Road-map to Build in the Northeast') from 1976, the Fog House follows the same path as suggested by the book; starting with "an ample shade, a protective shelter shelter from the sun and rain."

"The main inspiration for the project came, without a doubt, from the information we found on the terrain. The exuberant nature, the view that reaches dozens of kilometers, as well as the wind and sunshine conditions", Partner at Jirau Arquitetura, Pablo Patriota, says. Fog House is set on a large stone slab, overlooking the awe-inspiring landscape of Serra Negra, where a rural village full of charm creates the best conditions for a weekend escape with authentic country life, great restaurants, unique wineries, and a comfortable climate. "Its name is due to the mist that routinely takes over everything. This house is the result of a challenging request from clients who have very good taste: a place for quietness, for refuge, for affection and friends, in short, a place for the good things in life to happen. In addition, it should bring the beautiful landscape of its surroundings inside, mixing rusticity with sophistication", Pablo tells. Due to its steep terrain, a contrast to most urban homes presents itself.

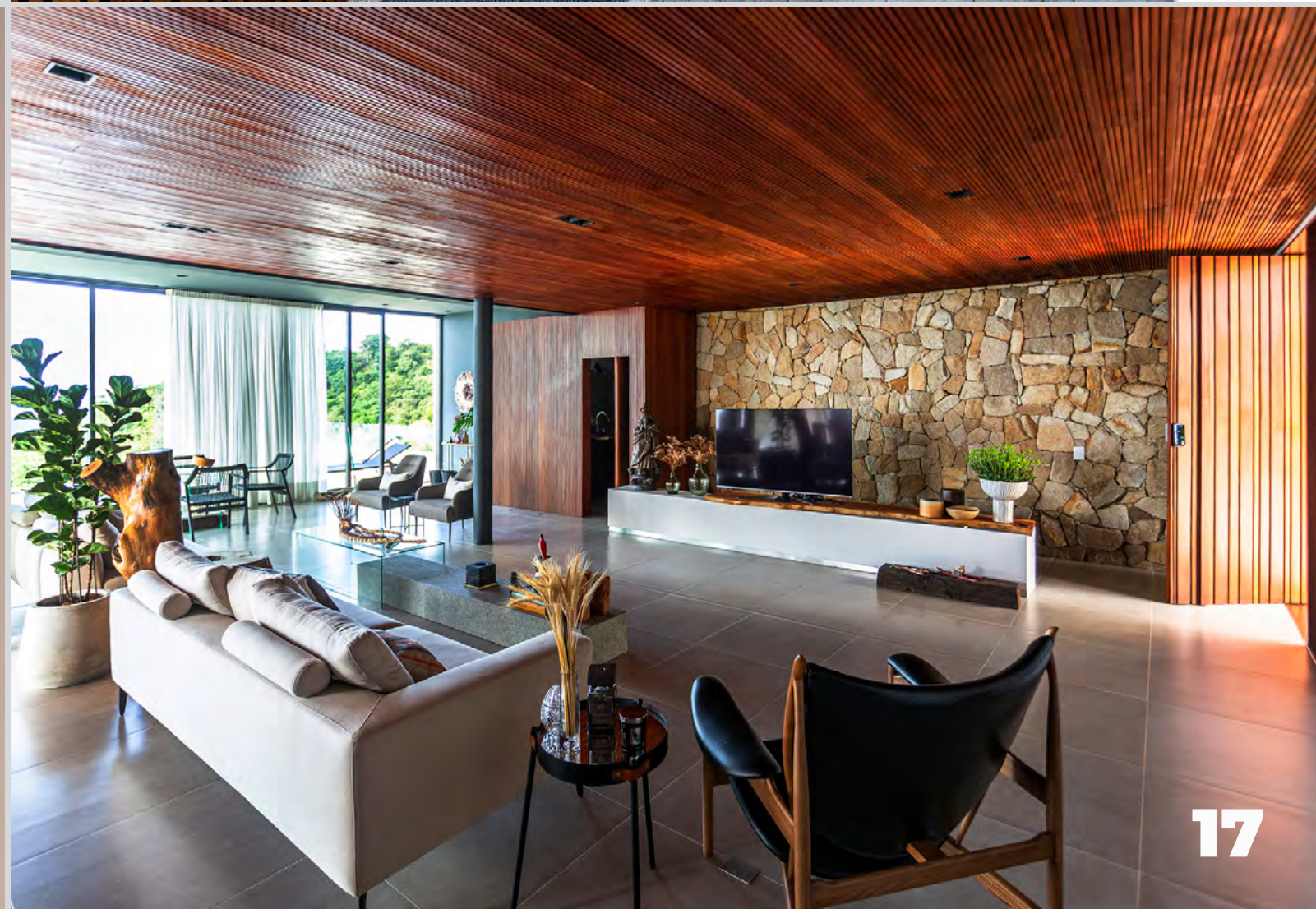




Normally, homes in urban environments are stacked to vertically »ascend«. Fog House, on the other hand, has placed the entrance on the social floor from which one can »descend« to experience the more intimate environments. “The access is made by a walkway, half ramp, half staircase, which begins with some concrete steps that talk to the small cashew tree that already inhabited the lot when we arrived, and then develops ramped up to the access door. On this social floor, a single room joins living room, dining room and kitchen”, Pablo mentions. “Half of this large space integrates with the gourmet terrace and the infinity pool, built entirely on balance, and the other half faces the landscape through a floor-to-ceiling frame, protected by a generous marquee, almost as ‘a seaside flat faces the sea in front of it’.” Descending further, the overhang of the pool references to Armando de Holanda’s book, providing a “sheltered place where one can participate in the unfolding of the days and nights, animated by the light, the winds and the rains: places of an architecture of the human experience of the natural environment.” Seeking to integrate itself into the environment, Fog House really emphasized the natural elements. “Our project follows the kind of architecture we believe in. It is simple, timeless and straightforward. Half of our terrain is formed by outcropped rocks. The lines of the project are simple and strong, because the intention was never to mimic, but to dialogue with the surroundings”, Pablo ends.

Architecture by **Jirau Arquitetura**

Photography by **Antônio Preggo**







FORGE LOFT

Leszno, Poland

The Forge Loft is an original loft design 'done right'. The interior designer Jan Sikora set out to transform a former smithy into an authentic loft apartment without taking any shortcuts in the process. Everything from choice of materials to final details had to resemble the original vibe of a truly industrial space.

The aim of the project was to integrate an old building into a new residential area in Leszno. But, to ensure all the elements would fall into their right place to create this harmony of old, coarse and raw, each detail had to be consulted with and approved by Jan Sikora. "The construction process required a sternness of me. There was no room for compromise. A single wrong decision would ruin both the original building and what was to become of it", Jan says. "The original industrial materials that came with the building make this project something completely different from the usual, popular 'softloft' projects, created using artificial industrial-like elements, which only have the, now sought for, industrial-like look, softer in character compared to the authentic." Grasping precisely "what a true re-established industrial interior should look like", use of coarse, rough concrete and masonry original to the building was used alongside modern, contemporary additions to render a place of utmost authenticity yet fit for a modern living experience. Also, the color nuances let one soak into the story of the former forge. "Black dominates in the space, so do the perforated steel sheets and black steel elements used repeatedly through the interior. Their cool feeling is contrasted with warm shades of orange and yellow in wood constituting other elements of the composition", Jan points out.

No matter what vantage point one takes in the Forge Loft, authentic integrity shines through every detail that constitutes the place. Although taking part in a new residential area, history has been immortalized.

Architecture by **Sikora Interiors**

Photography by **Tom Kurek**

Words of the Week



“

When going through all the house footage from our Slovakia trip, I begin to realize how much I have missed producing home tours on YouTube. Stories are great in writing, but getting a real feeling of the place is just much easier through video, as one can directly engage with the object in question.

Engaging with the architecture on camera is a thing I enjoy incredibly. As a kid, I dreamed of becoming an actor. Despite taking on the protagonist characters in school plays, it was a dream which fell short due to my pragmatic approach to career planning. ‘It is too risky to earn a living that way’, I thought.

Though I am not acting in the house tours, the house tours bring a bit of the same magic I found in my early experiences with acting. I get to show the story rather than ‘just’ telling it. It is a huge satisfaction, because this way, I feel more in control of the narrative since I can fully partake and immerse myself in the context of the story.

CHRISTIAN TRAMPEDACH
FOUNDER, RESTLESS

