

PRESSWORKS

79

AMBRIDGE

STREET

CHILTHAM

AN ULTRAMODERN WORKSPACE

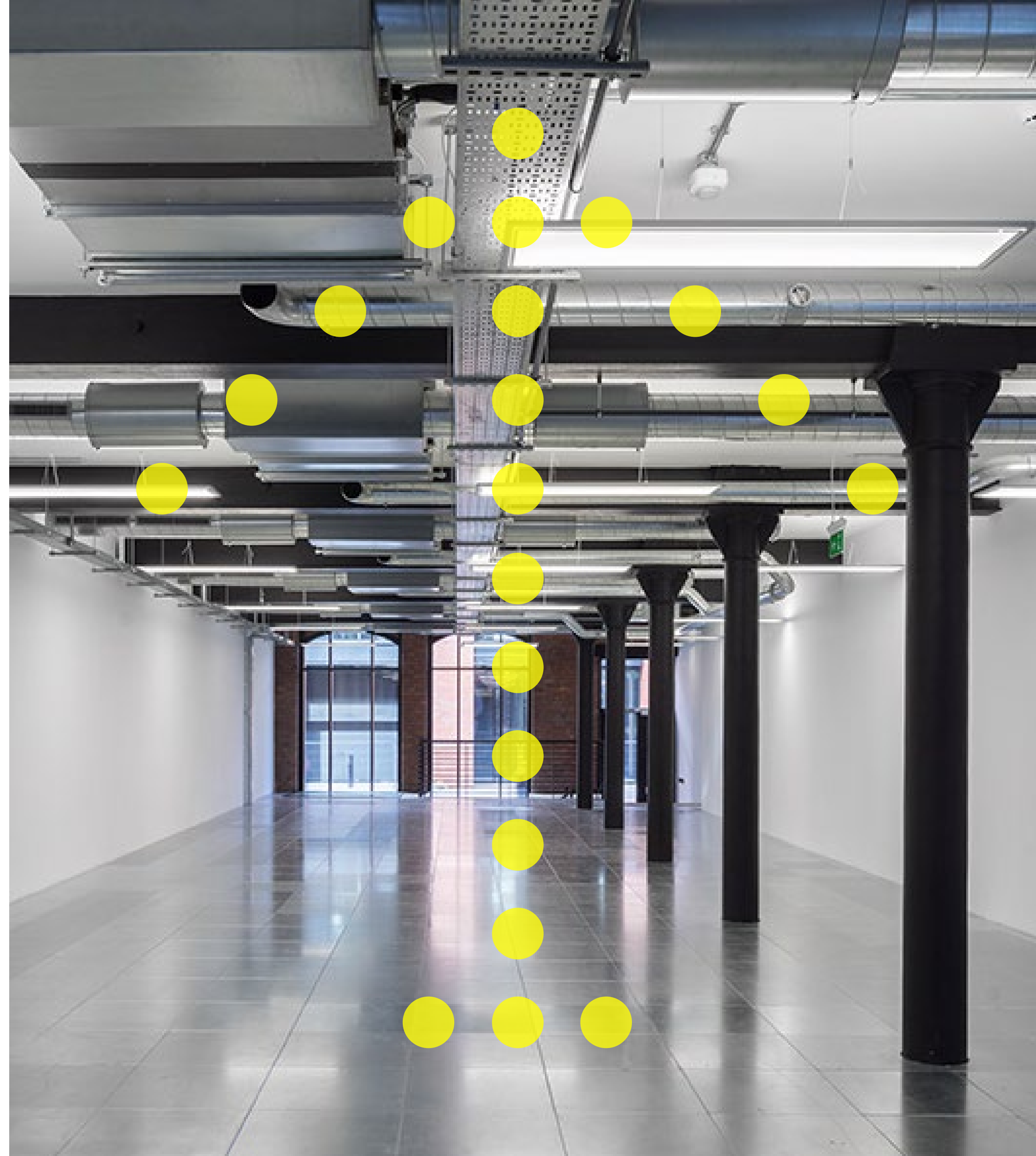
Pressworks is a premium new workspace set on Ambrose Street, in Cheltenham's historic and picturesque Central Conservation Area, close to the city centre.

Over the years the building has been home to various 'Works', housing coach painters, mechanics and numerous printers. Now it's being extensively renovated into state-of-the-art offices, an ultramodern workplace designed to exceed expectations.

With a new roof extension, Pressworks will offer self-contained units with contemporary, pared-back finishes.

The new facade will have just a nod to its industrial heritage, with a modern but sympathetic frontage of brick and glazed tiles, and smart new windows all bringing it back to life.

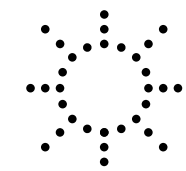
press.works



DESIGNED AROUND HOW WE WORK TODAY

Pressworks offers three fully self-contained units, set over three floors. Contemporary design, premium finishes and materials, and state-of-the-art technology including fibre cabling throughout means Pressworks will be the brightest new workspace in the city, designed around how we work today.

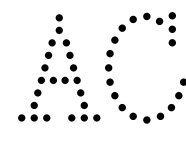
The Details



New roof terrace



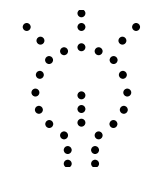
Shower rooms, changing rooms and drying facilities



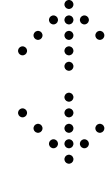
Fully air conditioned/comfort cooled



Secure cycle racks



LED lighting with daylight dimming



Feature 8 person lift

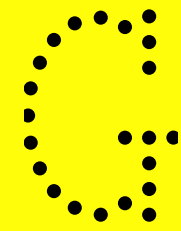


High specification toilets serving all offices

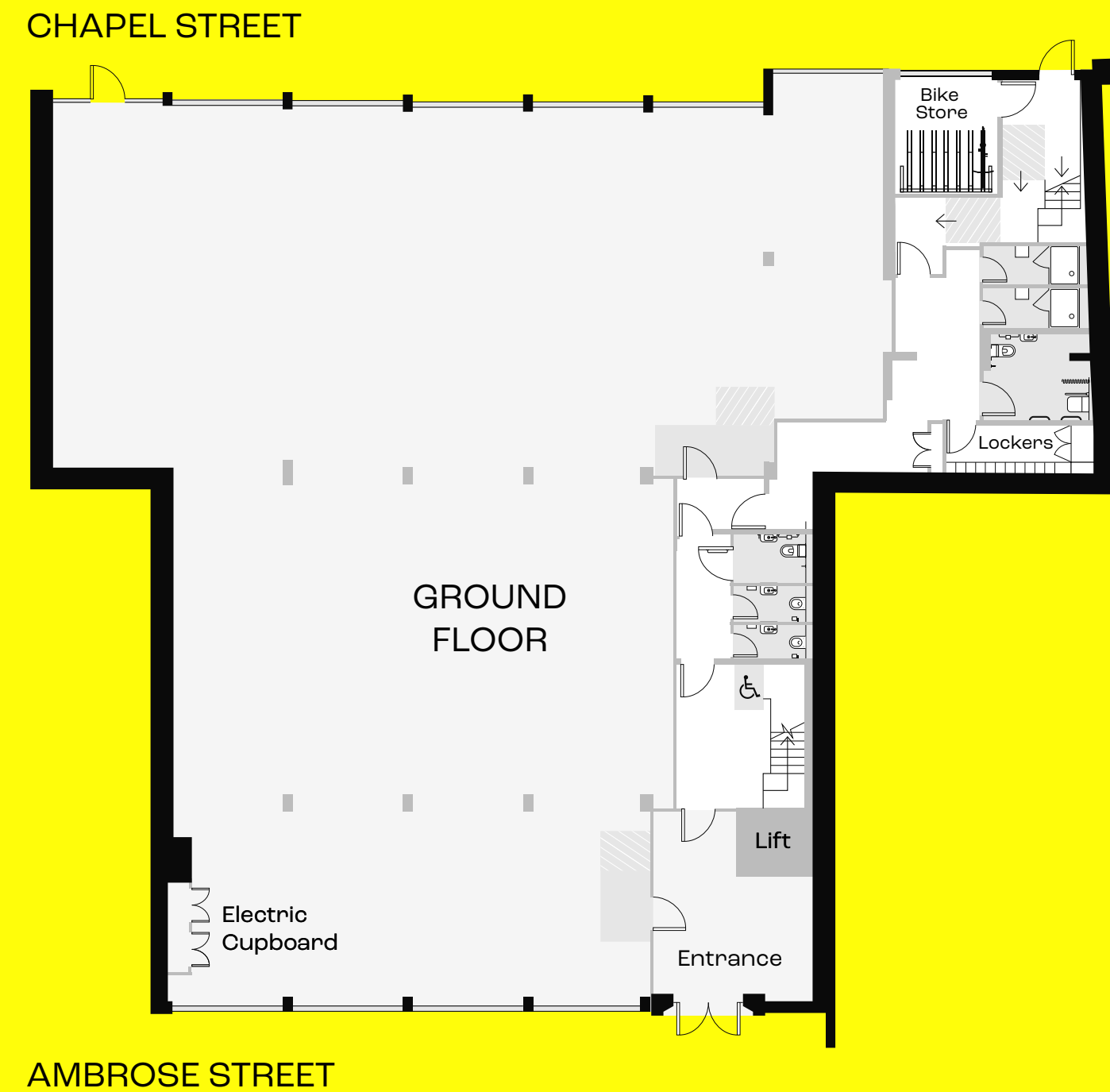
press.works



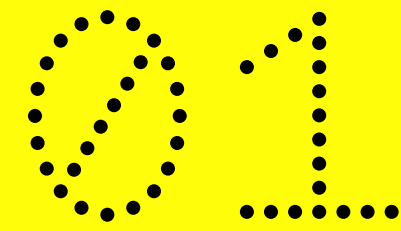
THE SPACE



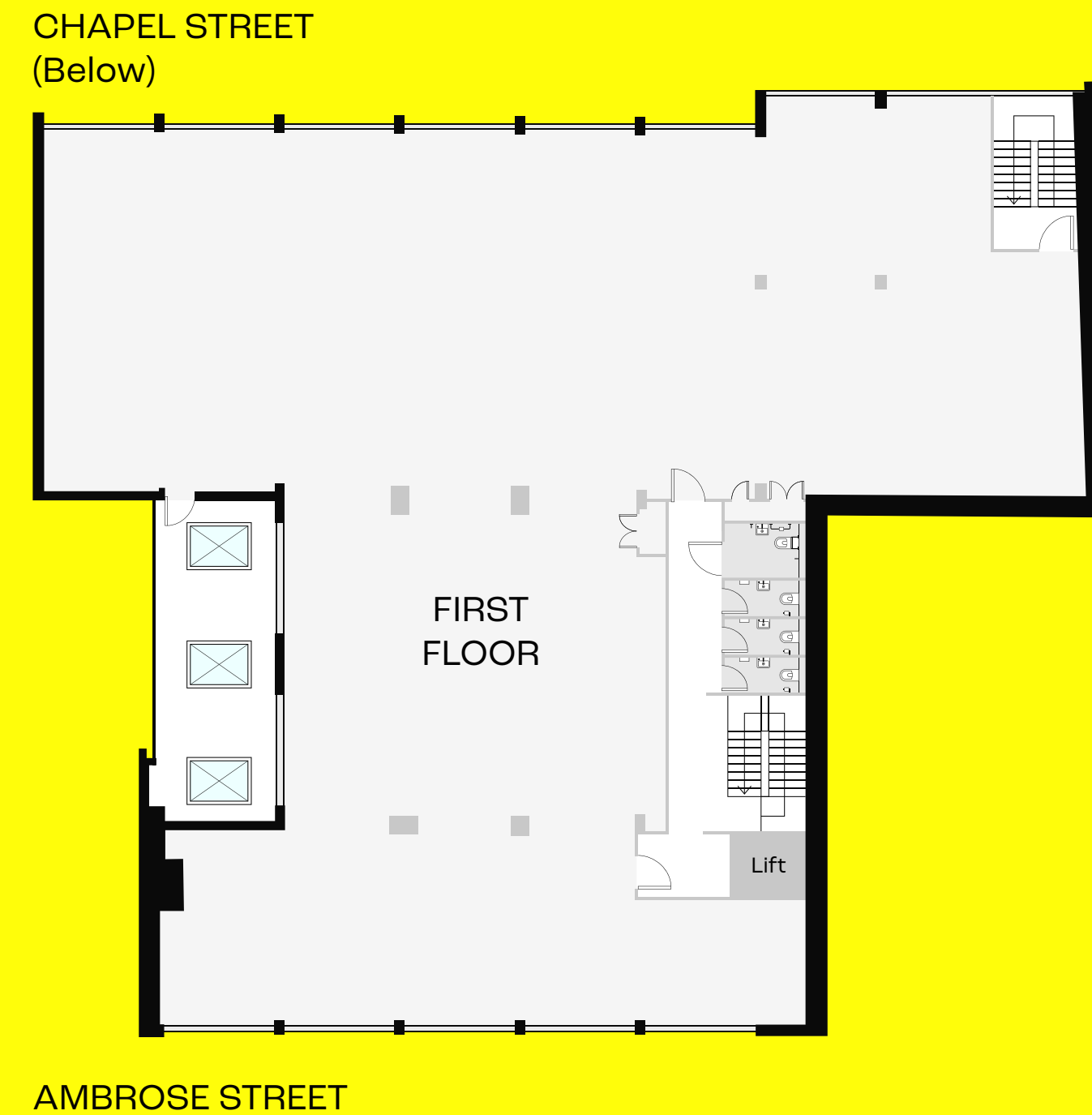
5,793 sq ft*
Available to let



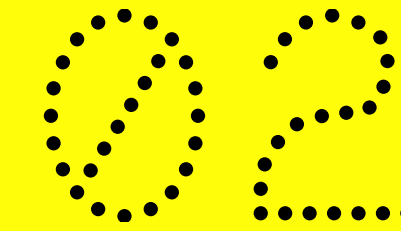
AMBROSE STREET



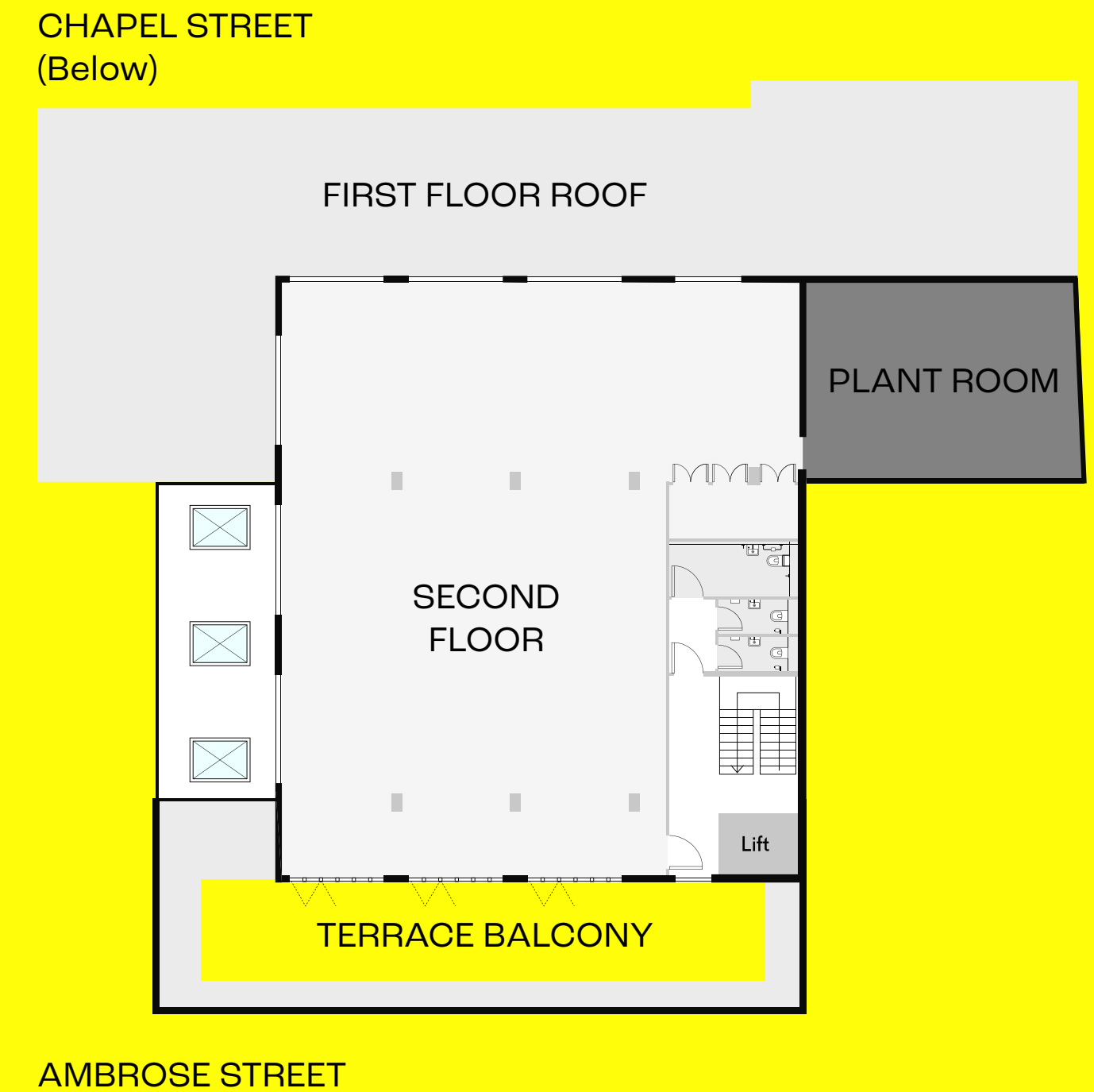
6,232 sq ft*
Available to let



AMBROSE STREET
(Below)



2,634 sq ft*
Available to let



AMBROSE STREET
(Below)

THE LOCATION

A pretty & historic Spa town set on the fringe of the Cotswolds AONB. Cheltenham is full of beautifully preserved Regency Architecture, and boasts a thriving cultural scene packed with a wide range of independent and International festivals.

Don't be fooled by its quaint appearance- it's got a thriving business community catering to small & big business alike. It's home to the one of the UK's most famous racecourses too!

Bus Stops

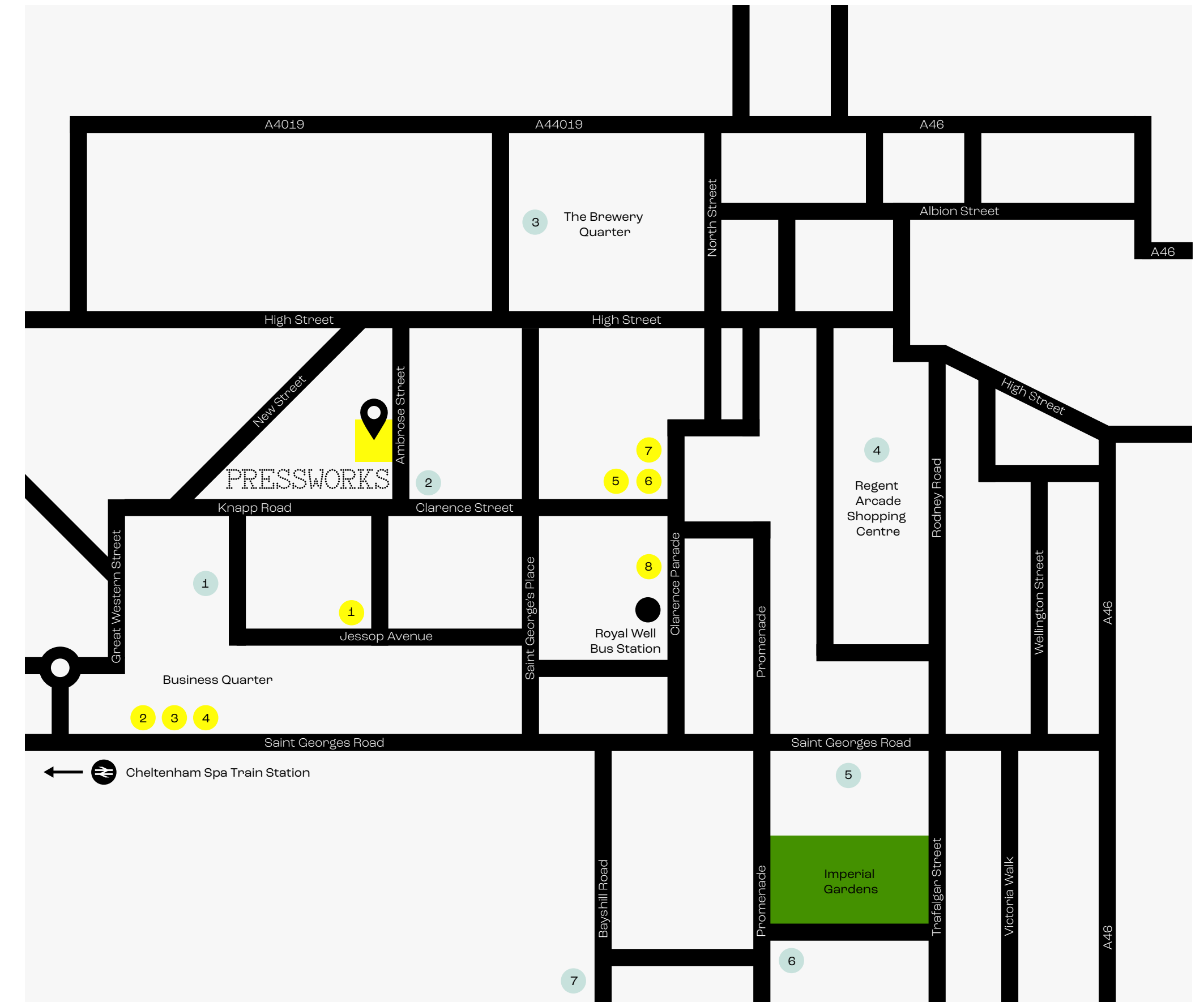
Ambrose St
30 sec walk

St Jame's House
2 min walk

Henrietta St
2 min walk

Train Stations

Cheltenham Spa
18 min walk



Local Occupiers

- 1 - Brewin Dolphin
- 2 - Investec
- 3 - Steinhoff International
- 4 - Vertex Financial Services
- 5 - Mactaggart and Mickel
- 6 - Northrop Grumman
- 7 - WS Atkins
- 8 - HESA

Amenities

- 1 - Waitrose & Partners
- 2 - The Bottle of Sauce
- 3 - The Brewery Quarter
- 4 - Regent Arcade Shopping Centre
- 5 - Cheltenham Town Hall
- 6 - Queens Hotel Cheltenham
- 7 - Malmaison Hotel

PRESSWORKS

For all enquiries —



Oliver Workman
Partner
oliver@thponline.co.uk

A development by —



Follow us:
f t @ @presswrks
press.works

MISREPRESENTATION ACT: THP Chartered Surveyors for themselves and for the vendors or lessors of this property, whose agents they are give notice that: a) all particulars are set out as general outline only for the guidance of intending purchasers or lessees, and do not comprise part of an offer or contract: b) all descriptions, dimensions, references to condition and necessary permissions for use and occupation, and other details are given in good faith and are believe to be correct but any intending purchasers or tenants should not rely on them as statements or representations of fact but must satisfy themselves by inspection or otherwise as to the correctness of each of them. c) no person in the employment of THP Chartered Surveyors has any authority to make any representation of warranty whatsoever in relation to this property. MARCH 2020. [Design by Studio.Build.](#)

