

## the b kobe

2-11-5 Shimoyamate St, Chuo-ku, Kobe-city, Hyogo 650-0011 Japan  
Tel: +81-78-333-4880 Fax: +81-78-333-4876

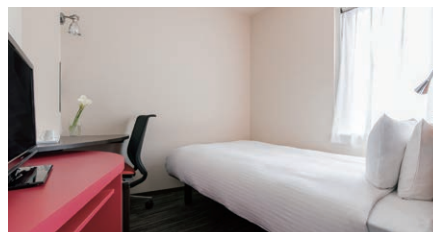
### Access

JR – Sannomiya Station, West ticket gate – 5 minutes walk  
Hankyu – Kobe Sannomiya Station, West ticket gate – 3 minutes walk  
Hanshin – Kobe Sannomiya Station, West ticket gate – 8 minutes walk  
Subway – Seishin-Yamate Line West 3 Exit – 1 minutes walk  
Shin Kobe station – 10 minutes by train

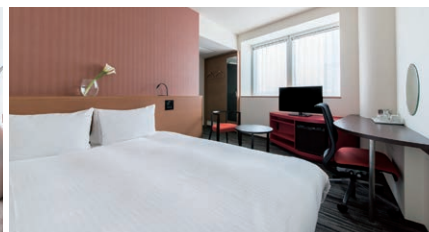
### Guest Rooms

168 rooms  
Non smoking only  
Smoking Area 2F

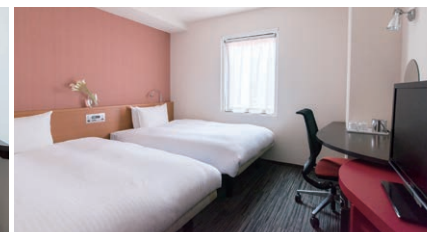
Check-in: 15:00  
Check-out: 11:00



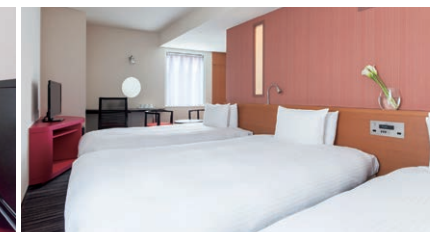
Single 11、13㎡ 13 rooms (3 – 9F)



Double 12 – 18㎡ 13 rooms (4 – 9F)



Twin 16、22㎡ 129 rooms (2 – 8F)



Triple 24、27㎡ 13 rooms (2 – 8F)

Located a minute's walk from Sannomiya Station, the b kobe is a short walk from Ikuta Shrine, famous for its prayers and marriages. There are 13 stores on the basement 1st floor and 2nd floor lobby level, including a popular Kobe beef steakhouse which is a standalone store that cannot be reserved in advance. There is also a restaurant that offers an Italian buffet breakfast, a sports gym, hot yoga, and hair salon all of which help ensure a fulfilling stay.

### Breakfast

Morning buffet Albert Location: 1F  
Opening hours: 7:00 – 10:00

### Attractions

The Former Foreign Settlement of Kobe, Ikuta Shrine, Kobe harbor land, Anpanman Children's Museum, Kobe Chinatown, Kobe Animal Kingdom, Hakutsuru Sake Brewery Museum, Kobe International Airport, Kobe Kitano Ijinkan

### Facilities

Free WiFi, Coffee Station (free), Net Station (free), Laundry Room, Ice Machine, Vending Machine, Smoking Area (2F)