

the b ochanomizu

1-7-5 Kanda-Awajicho, Chiyoda-ku, Tokyo 101-0063 Japan
Tel: +81-3-3254-2888 Fax: +81-3-3254-2887

Access

Tokyo Metro Marunouchi line – Awajicho Station: Exit A5 – 1 minute walk
JR line – Akihabara Station: Exit Denkigai – 10 minute walk
JR line – Kanda Station: West Exit – 8 minute walk
Tokyo Station – 10 minutes by train
Shinagawa Station – 25 minutes by train

The hotel is fully renovated and refurbished in November 2019.

Located 1 minute on foot from Awajicho station, the b ochanomizu is an urban hotel where you can experience quality relaxation while in the center of the city. It is about 5 minutes on foot to Akihabara's "Electric Town", 15 minutes on foot to the Imperial Palace, and just 3 minutes from Tokyo Station, a very convenient location for transportation.

Breakfast

Lounge – Location: 1F

Opening hours: 7:00 – 9:30 (L.O. 9:00)

Attractions

Akihabara Electric Town, Imperial Place, Tokyo Dome, Nippon Budoukan
Jinbocho, an area famous for second-hand bookshops,
Kanda Ogawamachi with various sports equipment shop

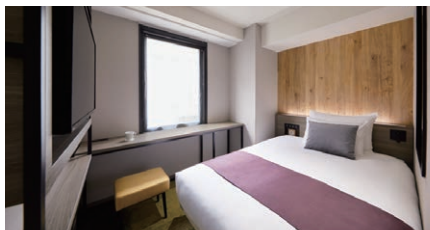
Facilities

Free WiFi, Espresso Machine (free), Net Station (free), Laundry Room,
Ice Machine, Vending Machine

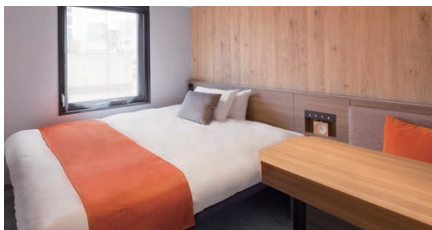
Guest Rooms

72 rooms
Non smoking only

Check-in: 15:00
Check-out: 11:00



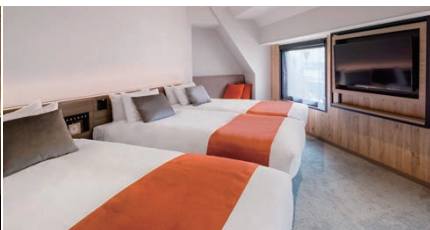
Single 14m² 12 rooms (2 – 7F)



Double 15 – 22m² 46 rooms (2 – 9F)



Twin 20 m² 13 rooms (2 – 9F)



Triple 25m² 1 rooms (8F)