

the b shimbashi

1-17-13 Nishi-Shimbashi, Minato-ku, Tokyo 105-0003 Japan
Tel: +81-3-3501-2500 Fax: +81-3-3501-2501

Access

Toei Mita line - Uchisaiwaicho Station: Exit A3 - 4 minute walk
JR, Tokyo Metro, Toei Subway, Yurikamome
- Shimbashi Station: Karasumori Exit - 6 minute walk
Tokyo station - 20 minutes by train
Shinagawa station - 25 minutes by train

Breakfast

Location: 1F
Opening hours: 6:45 - 9:00

Attractions

Toranomon Hills, Shiodome Sio-site, Hamarikyu Gardens, Hibiya Park,
Tokyo Imperial Palace, Kabuki-za, Tsukiji fish market, Tokyo Tower

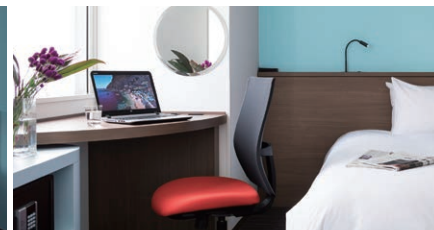
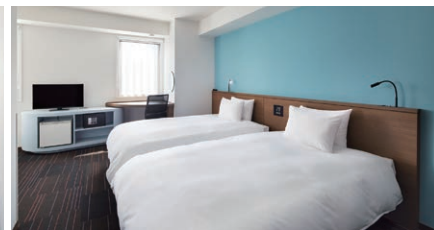
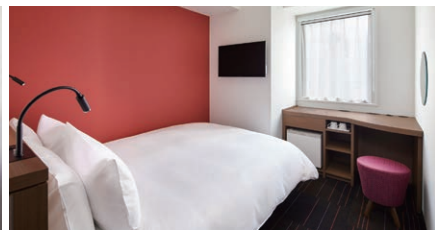
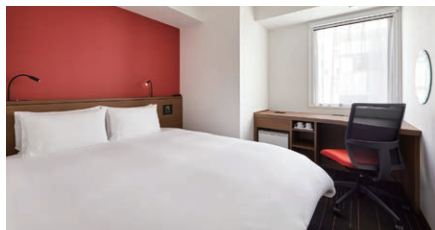
Facilities

Free WiFi, Espresso Machine (free), Laundry Room,
Ice Machine, Smoking Area (1F)

Guest Rooms

109 rooms
Non smoking only
Smoking Area 1F

Check-in: 15:00
Check-out: 11:00



Double 14-16m² 91 rooms (2 - 14F)

Twin 20-26m² 18 rooms (2 - 14F)