

the b hachioji

4-6-12, Myojincho, Hachioji, Tokyo 192-0046 Japan
Tel: +81-42-646-0111 Fax: +81-42-646-0004

Access

Keio line - Hachioji Station: Central Exit - 1 minute walk
JR Hachioji Station: North Exit - 7 minute walk
Tokyo station - 55 minutes by train
Shinjuku station - 35 minutes by train

Breakfast

the b lounge Location: 1F
Opening hours: 6:30 - 10:00 (L.O. 9:30)

Attractions

Takao Mountain (Michelin 3 star sightseeing spot) ,
Tokyo Summerland, Sanrio Puroland,
Esforta Arena Hachioji

Facilities

Free WiFi, Espresso Machine (free) , Net Station (free) ,
Laundry Room, Ice Machine, Vending Machine,
Parking Lot, Smoking Area (Outside)

Meeting and Conference 5 rooms (B1、4、12F)

	area (㎡)	height (m)	buffet	dinner	school	theater
Diamond B1F	164	2.8	180	120	100	200
Ruby 4F	30	2.3	—	10	18	30
Sapphire 4F	30	2.3	—	10	18	30
Garnet 4F	30	2.3	—	10	18	30
Emerald 12F	66	2.3	40	30	30	40

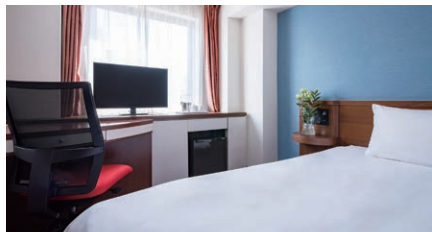
Fitness Gymnasium

Opening hours: 07:00 - 21:30

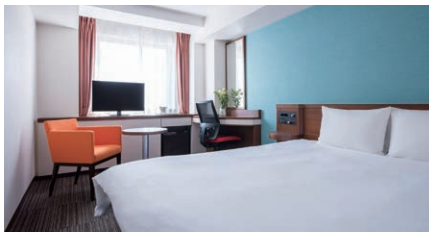
Guest Rooms

196 rooms

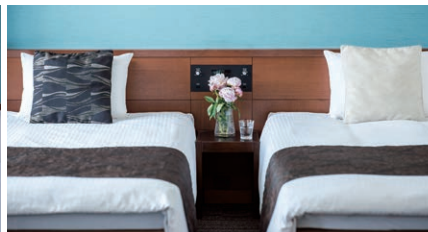
Check-in: 15:00
Check-out: 11:00



Single 13、15㎡ 126 rooms (4 - 12F)



Double 16 - 33㎡ 17 rooms (5 - 12F)



Twin 16 - 38㎡ 53 rooms (4 - 12F)

