

District Operations and Regional Managers



Washington State



Conservation
Commission

Report to Commissioners

Jean Fike, Puget Sound Regional Manager
January 18, 2024

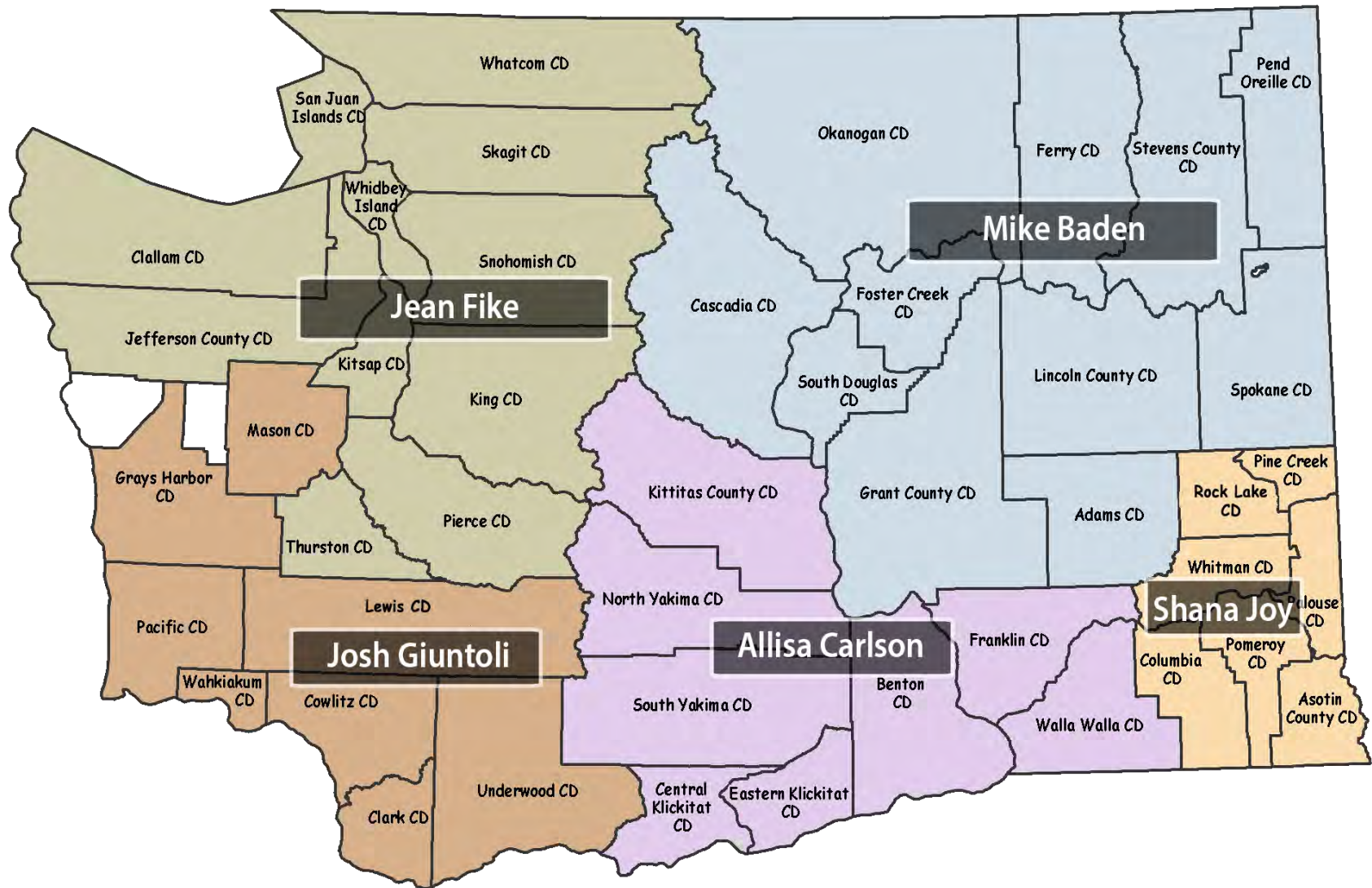
Regional Manager Team



Shana Joy, Coordinator, Southeast
Mike Baden, Northeast and North Central

Jean Fike, Puget Sound
Allisa Carlson, South Central
Josh Giuntoli, Southwest





Regional Manager Coverage



Ongoing RM Activities

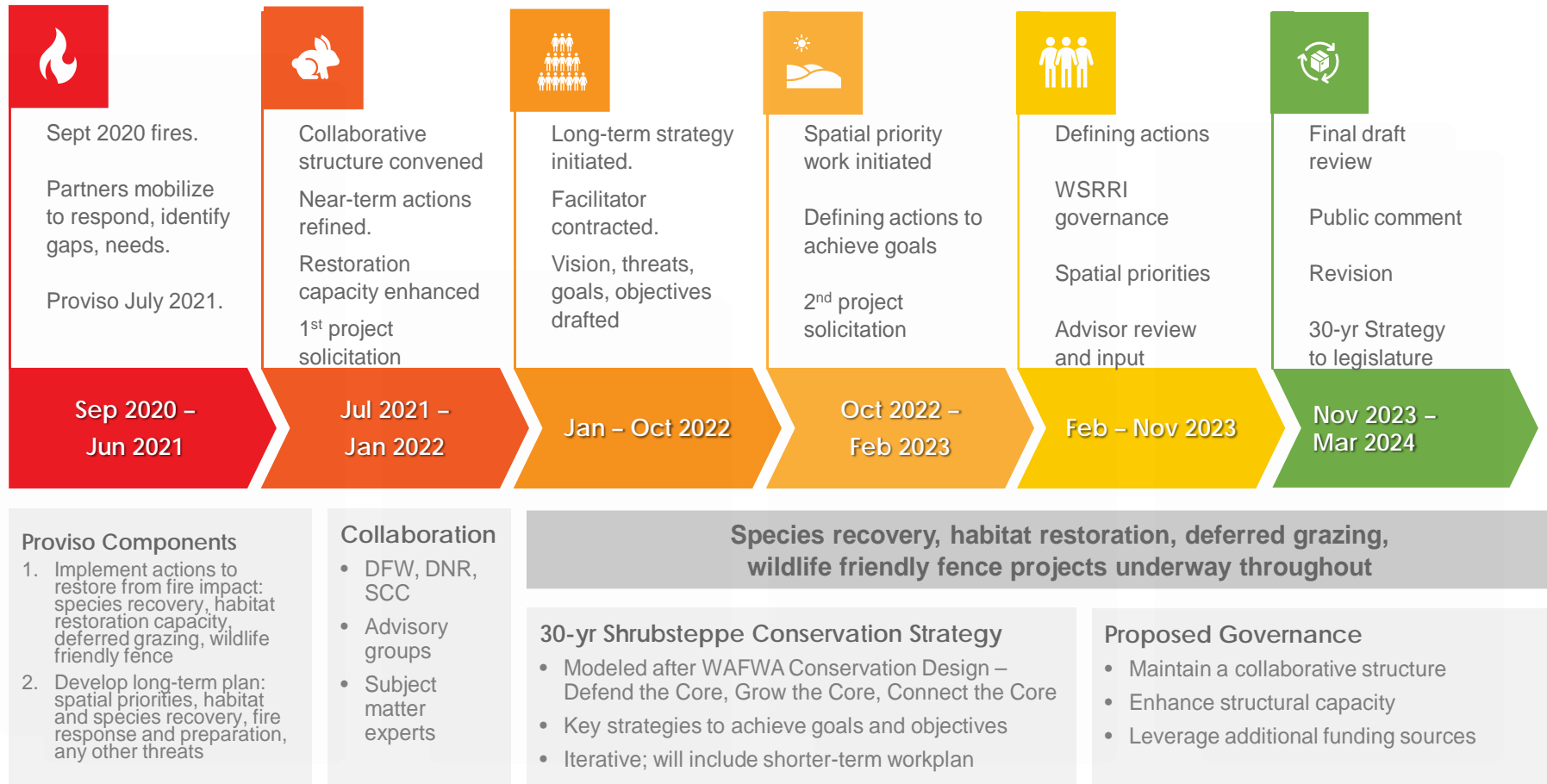
- Communication & partner liaisons
- Advise/assist all aspects of district operations
- Problem solving
- SCC funds oversight and grants administration for several programs
- District Digest – a wealth of information and resources
- Partnerships & relationships –So many! Both ongoing and ad hoc
- Elections has been added to the RM plate this year which means
 - Training
 - Answering questions
 - Referring folks to resources and examples
 - EF-1's nearly all submitted
 - One unusual elections wrinkle this year to mention – stay tuned for that

Recent Assistance



Washington Shrubsteppe Restoration and Resiliency Initiative

Timeline Summary





Coming Attractions

Zoning for District Elections

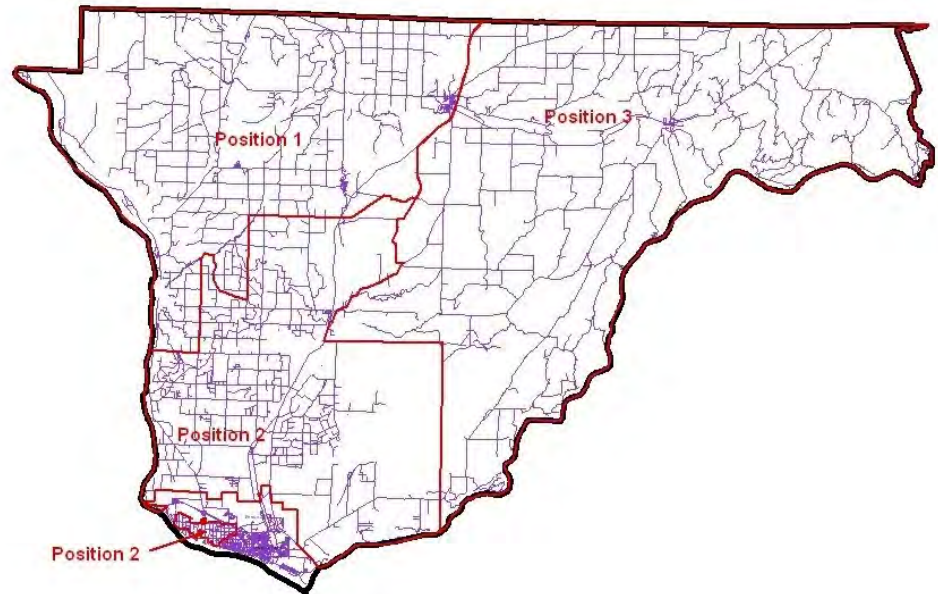
King Conservation District is proposing to designate 3 zones for election purposes

Instead of all three elected Supervisors running district-wide, they would each run in a zone

They are working with a firm that does this kind of zoning for cities and counties with - lots of analysis and public input

When complete, it will come to the SCC for approval – likely in July

Franklin County CD Zones



Disaster Assistance Program (DAP) Activation

- 1/16/24 the Executive Committee activated DAP for Snohomish CD
- The flooding event December 5-6 caused widespread damage to agricultural operations
- We will be supporting the District with outreach materials and some TA
- An advisory committee will form to vet requests













Questions?



Thank you!

Contact:

Jean Fike

[Jfike@scc.wa.gov](mailto:jfike@scc.wa.gov)

360-764-0533



Washington State
Conservation Commission