

Washington Shrubsteppe Restoration & Resiliency Initiative



Photo courtesy of Lincoln County CD



Allisa Carlson & Shana Joy
WSCC Regional Managers

May 18, 2023

Washington Shrubsteppe Restoration & Resiliency Initiative – ‘WSRRI’

- Labor Day Fires of 2020 – 600,000 acres
- 2021 Legislative Session
 - \$2.35 million operating
 - \$1.5 million capital (fencing)
- Collaborative Steering Committee

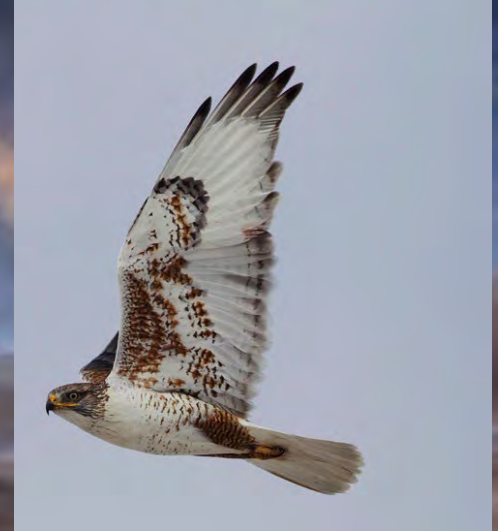
...to restore shrubsteppe habitat and associated wildlife impacted by wildfires...

...support wildlife values and ranching communities in eastern Washington...



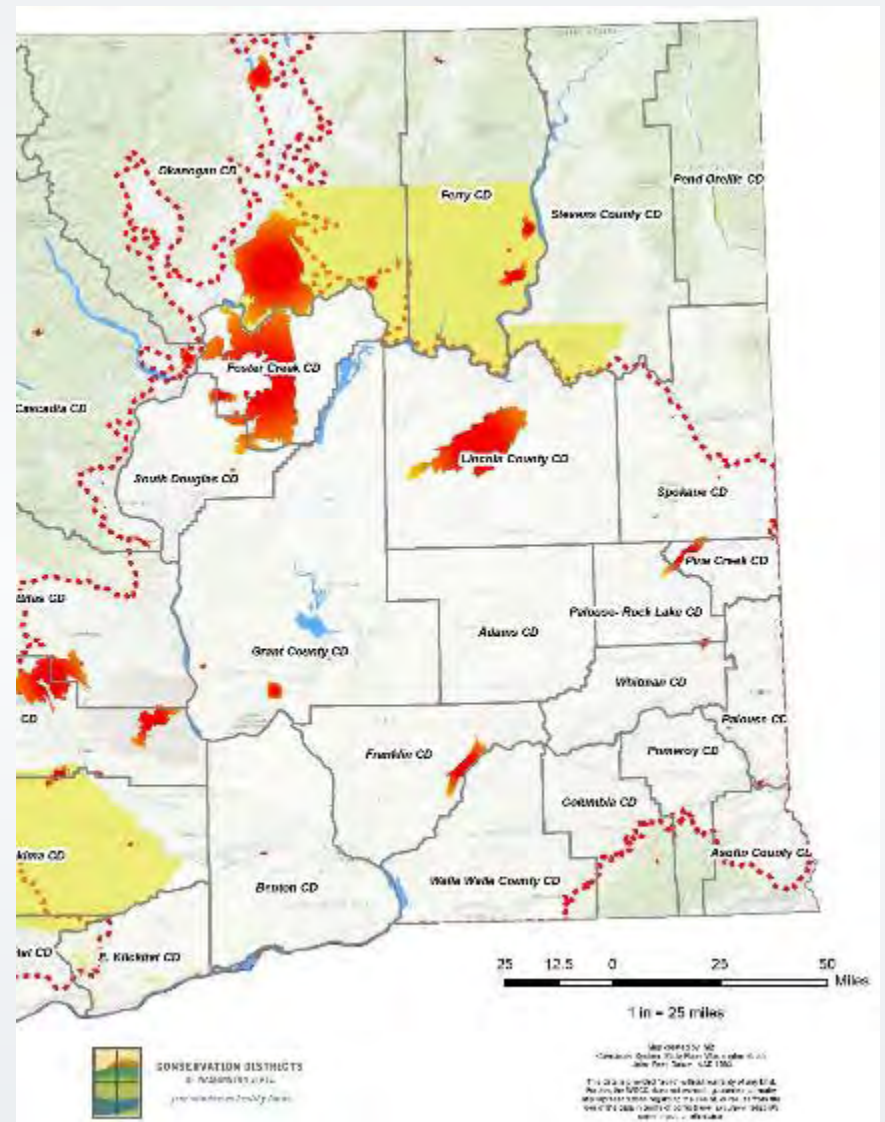
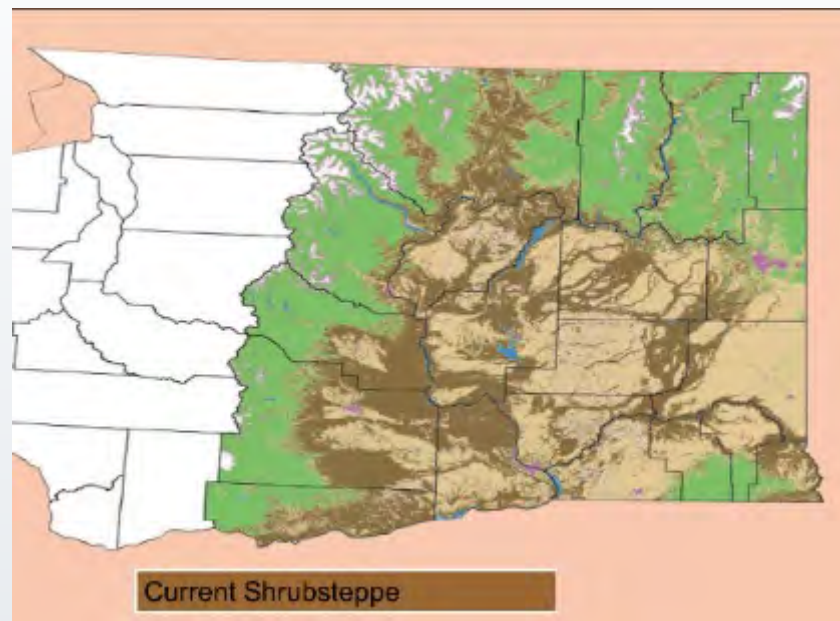


Photo courtesy of WDFW





Rawpixel



Implement immediate no-regret actions

Species
Recovery

Cultural
Resources

Plant
Availability

Wildlife
Friendly
Fencing

Deferred
Grazing



Convene a collaborative group, facilitated by a neutral third party, to develop long-term strategy for shrubsteppe conservation and fire preparedness, response, and restoration.

STEERING COMMITTEE

Near Term
Advisory
Group

*BLM, Cattlemen's, Land Trusts,
Tribes, NGOs, CDs, NRCS,
USFWS, WDFW, WSU*

Tech
Teams

6 Total

- *Species Recovery*
- *Cultural Resources*
- *Technical Tool*
- *Plant Availability*
- *Wildlife Friendly Fencing**
- *Deferred Grazing**

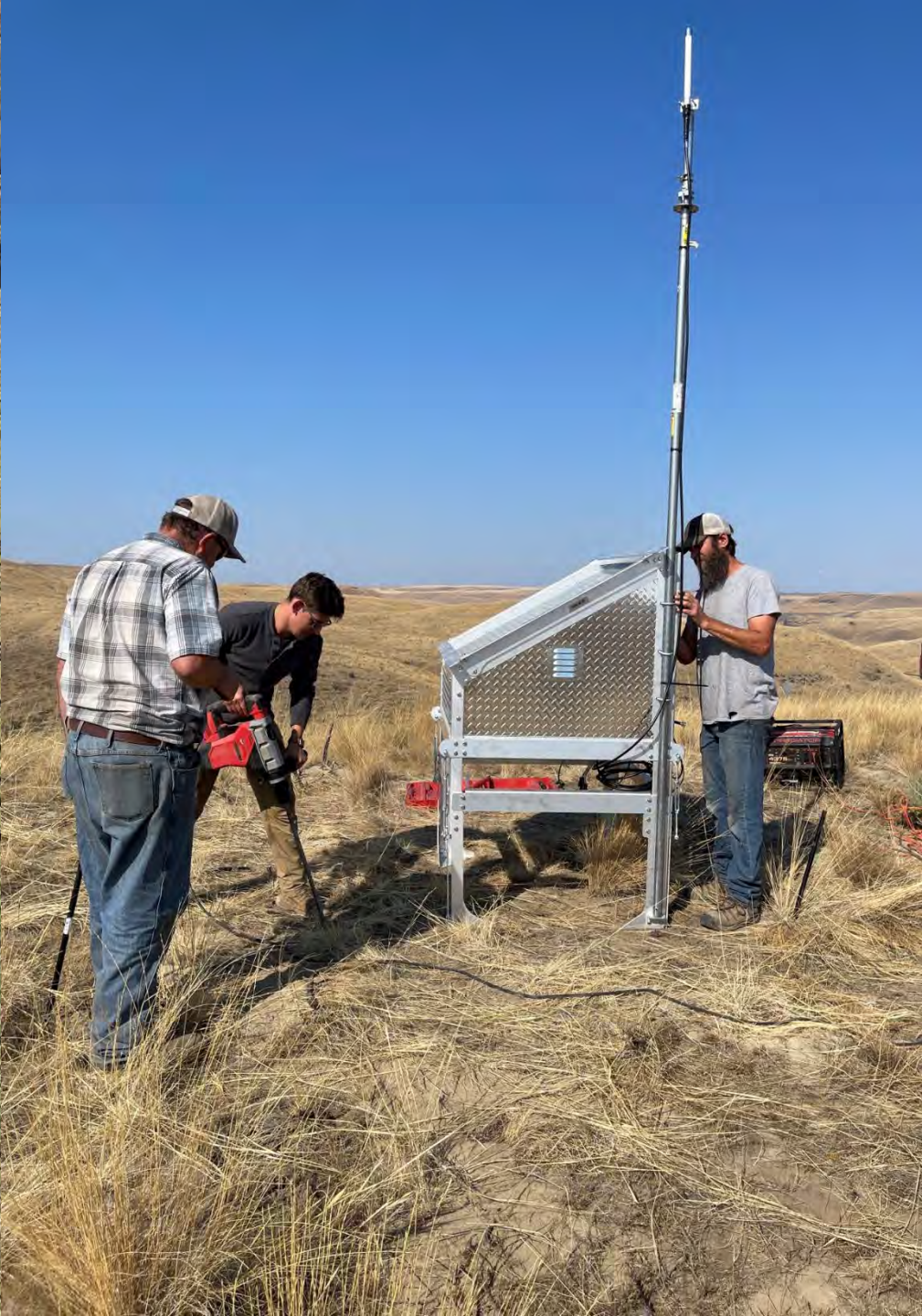
Review
Teams

3 Total

- *Wildlife Friendly Fencing**
- *Deferred Grazing**
- *Habitat Restoration*

Fall/Winter
2021-2022

Winter/Spring
2022



Photos courtesy of Conservation Northwest

Long Term Strategy

Convene a collaborative group, facilitated by a neutral third party, to develop long-term strategy for shrubsteppe conservation and fire preparedness, response, and restoration.



Building It

- Tri-agency steering committee
- LTS Advisory Group
- Triangle Associates – facilitators
- Focus tables
- 1:1 outreach



Timeline



Enhanced
engagement

Spatial
priorities

Finalization/
adoption

Full draft
available

Public
review/comment



Thank you!

Contact:

Allisa Carlson
South Central Regional Manager
acarlson@scc.wa.gov
360.480.6686

Shana Joy
Regional Manager Coordinator
sjoy@scc.wa.gov
360-480-2078

