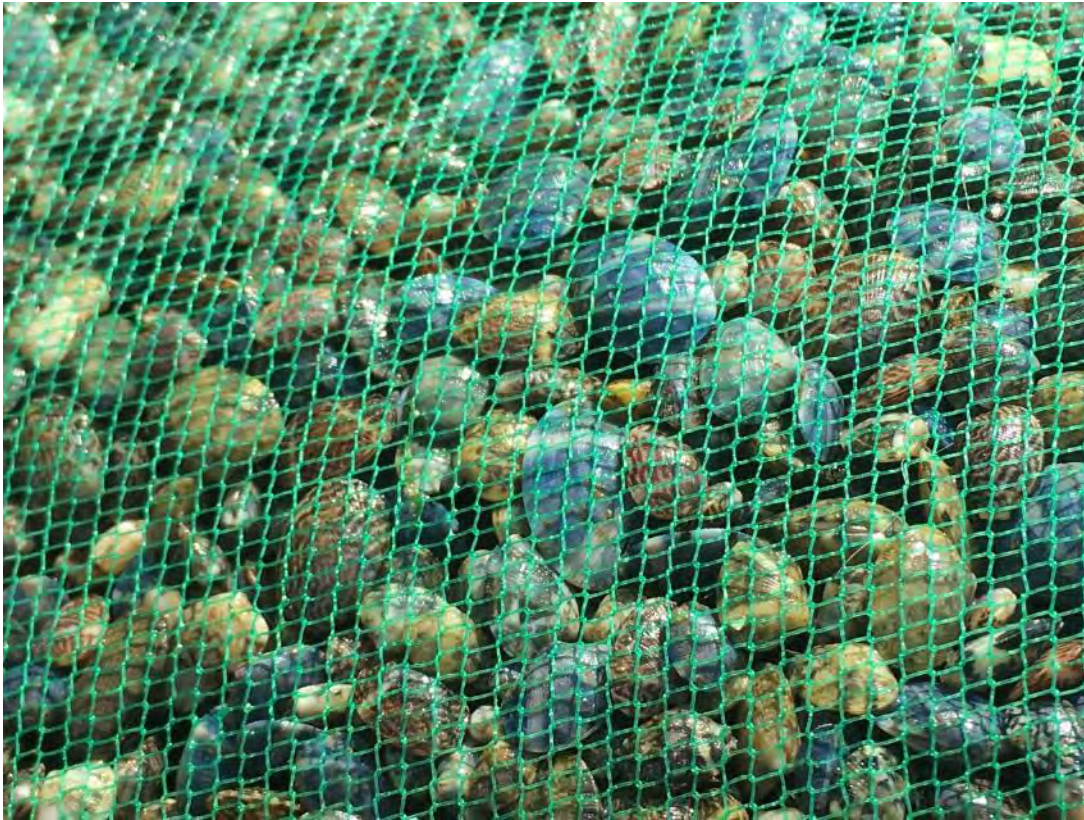


# Shellfish Grant Program: Draft updated programmatic guidelines



Alison Halpern, Ph.D., Scientific Policy Advisor  
20 July 2023

# Brief Background



- Since 2013, funding has been provided to the State Conservation Commission (SCC) to provide cost-share grants that complete natural resource enhancement projects necessary to improve water quality in shellfish growing areas (SGAs).
- Fourteen conservation districts containing shellfish growing areas are eligible.
- Programmatic guidelines haven't been updated since early 2018.



# Better clarification and communication with districts

New draft guidelines provide more criteria about what an ideal shellfish project looks like:

- Explains how BMP(s) address water quality issues — especially those caused by agricultural non-point fecal pollution and
- Geographically close to an SGA or adjacent to a river or stream that drains into an SGA
- With increased prioritization for projects that:
  - Are part of a Pollution Identification and Part of a collaborative effort to protect SGAs
  - Address a water quality issue in a threatened shellfish growing area





# Better science tools

- Arc GIS with layers showing proximity of projects to SGAs, drainage systems (rivers, streams, etc.), and previously funded projects (clusters of projects are desirable)
- NRCS BMP Conservation Practice Physical Effects (CPPE) matrix
- Daily average fecal load of livestock animals
- USGS StreamStats to identify watersheds

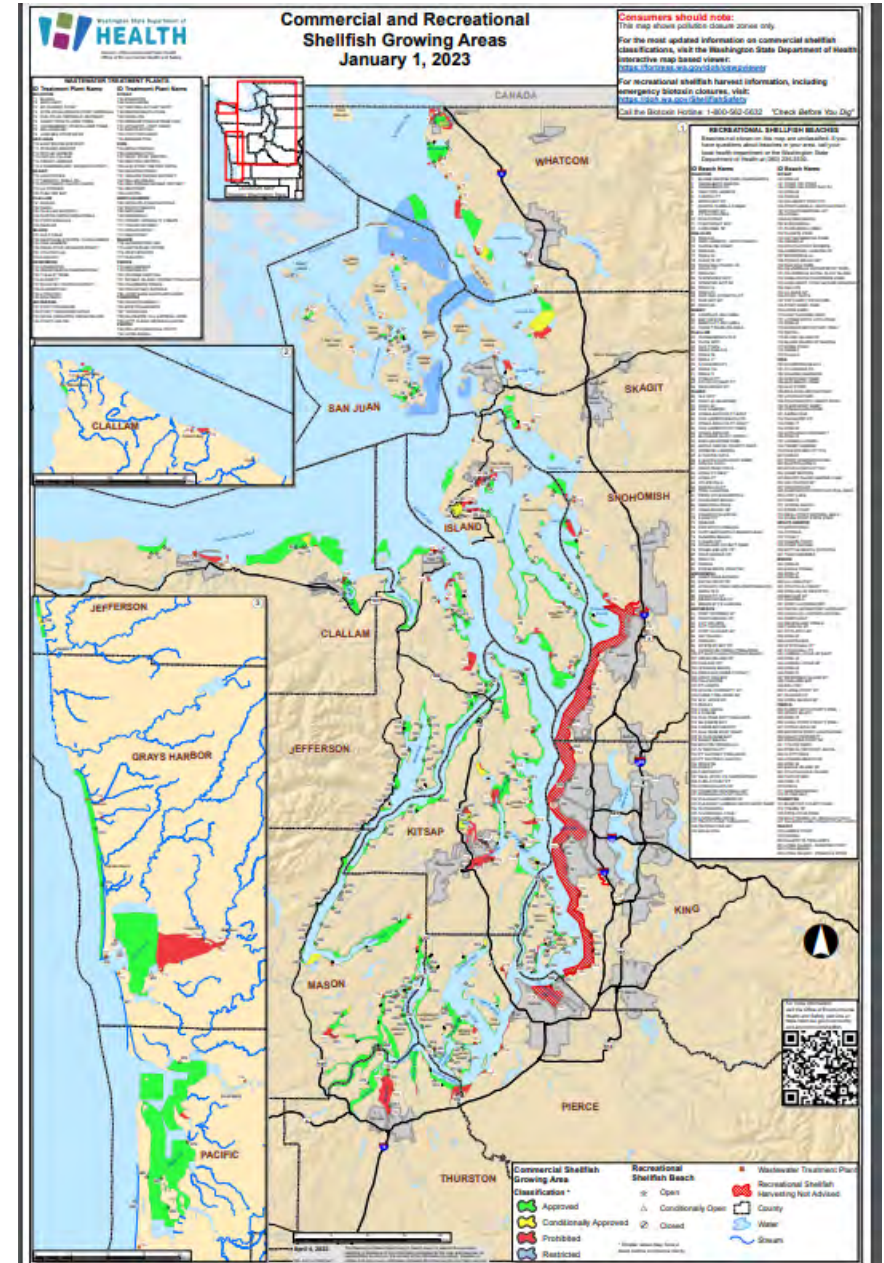
(Animals are not shown to scale.)





# Better coordination and collaboration with partner agencies

- Increased engagement with DOH, WSDA, PSP, and other partners
- Proposed prioritization of projects that focus on threatened SGAs, using DOH's annual list



# District Outreach

- Draft programmatic guidelines shared with the 14 shellfish districts for 45-day review
- Talked about draft guidelines at PS CD Caucus June meeting
- Held listening session on June 8 to answer questions and receive feedback
- Modified draft based on feedback





# Next steps

- Commissioners review and vote on final draft at July meeting
- Guidelines become effective immediately
- SCC staff updates CPDS Shellfish questions and communicates to districts how to provide information in the interim





For more  
information

**Please Contact:**

Alison Halpern, Ph.D.  
SCC Scientific Policy Advisor  
[ahalpern@scc.wa.gov](mailto:ahalpern@scc.wa.gov)  
360-280-5556



Washington State  
**Conservation Commission**