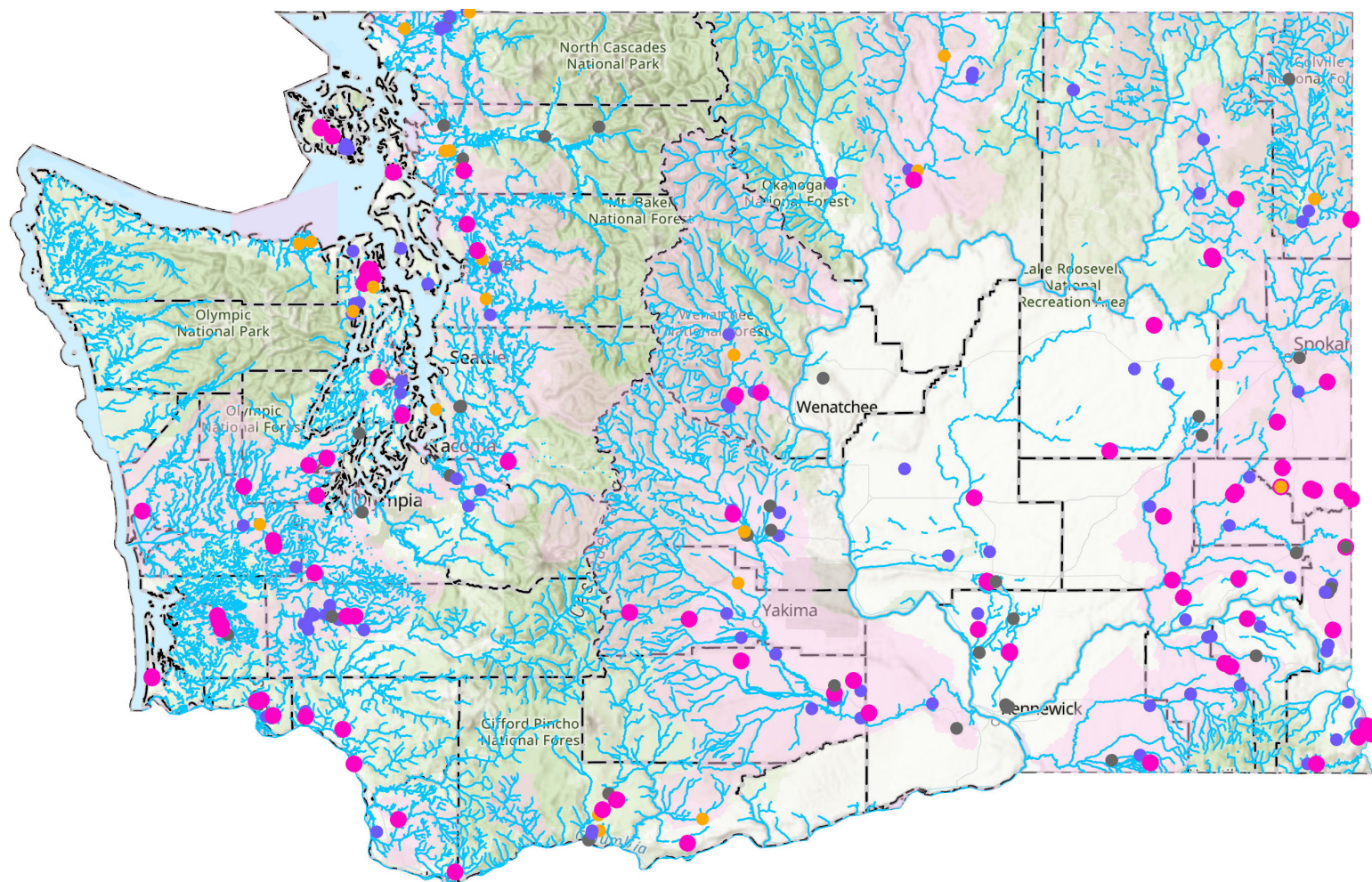


# Natural Resource Investments (NRI) Program

Conservation districts use NRI funding administered by the Washington State Conservation Commission to cover a portion of the cost of best management practices (BMPs) as an incentive for landowners to implement them on their properties. BMPs advance progress toward natural resource objectives, such as improved water quality and habitat, and are farm-friendly.

*Funding expended in 2019-21 state biennium: \$3,521,564*

## NRI Program Project Sites (fiscal years 2018-2021)



## Legend

### Completed NRI

- FY 2021
- FY 2020
- FY 2019
- FY 2018

TMDL Watersheds

Conservation District Boundary

WA\_bdy

— Documented Fish Presence (WIFD)

0 20 40 80 120 Miles



Background layer: ESRI World Topographic Map

Prepared by Brian Cochrane, 12 April 2022



## What Does the Natural Resource Investments Program Look Like on the Ground?



Jefferson County Conservation District used NRI funding to help 15 landowners restore salmon habitat in Chimacum Creek through removal of reed canarygrass. The overgrowth of grass choked stream flow and contributed to flooding, pollution, and low oxygen levels. The pictures above show a stretch of Chimacum Creek before and after this project.



North Yakima Conservation District used NRI funding to implement a multi-landowner wildfire preparedness project with members of the Bootjack Cabin Association.



The top picture shows the typical dense vegetation of the surrounding area before project implementation. The bottom photo shows the same location after the project, which reduced flammable vegetation and created fuel breaks to make the area more defensible.

## Biennium Highlights



**153**

best management  
practices installed



**25,118**

trees and shrubs  
planted



**25,561**

feet of stream  
protected

**Learn more:**

[scc.wa.gov/nri](https://scc.wa.gov/nri)

Contact:  
Shana Joy  
360-480-2078  
[sjoy@scc.wa.gov](mailto:sjoy@scc.wa.gov)