

# Farmland Protection and Land Access

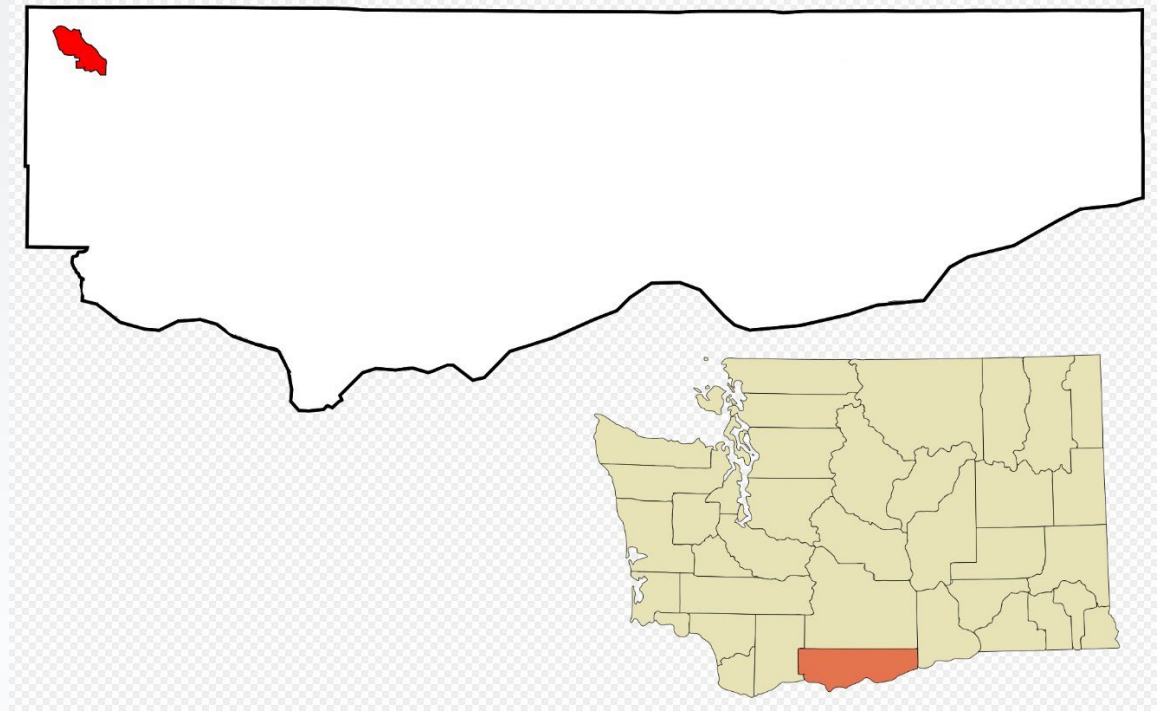
## Schmid Farm Funding Authorization



Paul D'Agnolo, Farmland Preservation Specialist  
January 2023

# Background

- Farmland Protection and Land Access (FPLA) launched and opened for applications in August 2022.
  - First project was approved in September by the Commission



FPLA Work Group evaluated second application and recommends project for funding:

Applicant: Columbia Land Trust, Schmid Farm

Work Group consists of representatives from:

WSU Extension, WSDA, Washington State Housing Finance Commission, American Farmland Trust, Conservation Commission



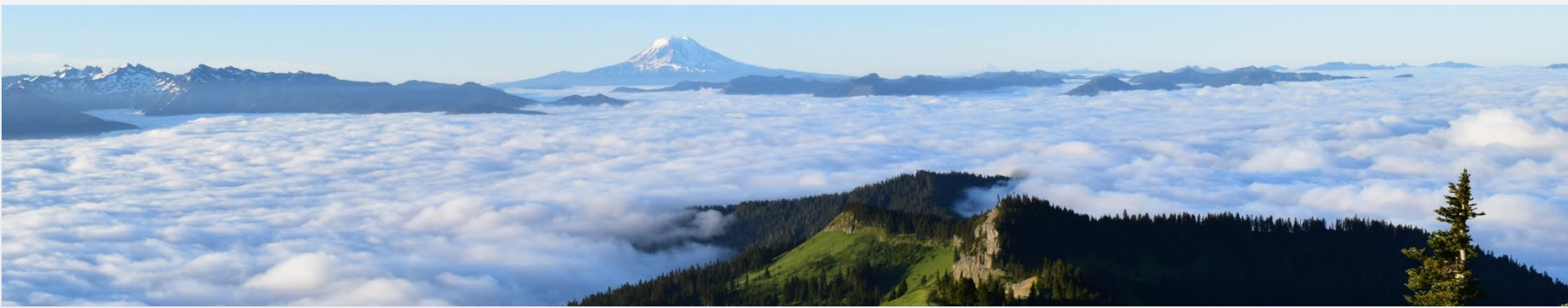
# Project Structure

- Columbia Land Trust secured FarmPAI loan
- Seeking \$875,000 from SCC to fully fund project (\$780,000 + due diligence costs)
- Easement will ensure property stays intact and available for farming
- Once easement is completed, farm will be sold to next generation farmer

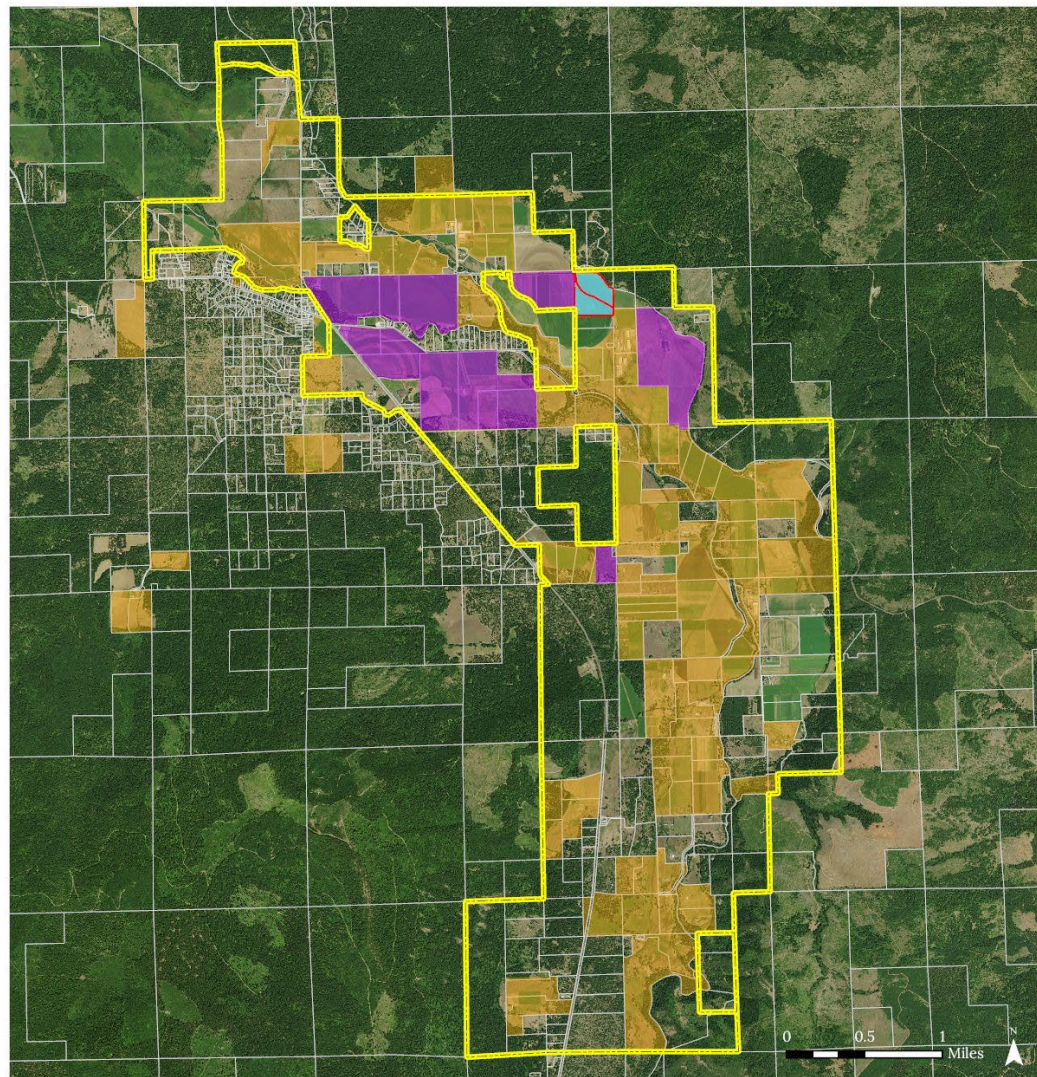


# Project Details





- 40 Acres in Trout Lake valley (Klickitat County)
- 100% prime farmland soil
- Secure and reliable water rights
- Part of 745-acre Mountain Meadows Dairy
- Contributes to 630-acre cluster of protected farmland
- In line with FPLA proviso, Columbia Land Trust has found New and Beginning Farmers that will purchase the encumbered property







## Area Map

-  Proposed Easement
-  Protected Agricultural Land
-  Unprotected Agricultural Land
-  Agricultural Zoning







# Recommended Action

The Work Group found the application strongly aligns with the FPLA program and recommends the Schmid Farm project for FPLA funding.

## Draft Motion:

The Conservation Commission accepts the FPLA Work Group's recommendation regarding Columbia Land Trust's Schmid Farm application. The Conservation Commission approves up to \$875,000 in FPLA funding for the acquisition of an agricultural conservation easement on the Schmid Farm by the Columbia Land Trust.

# Contact:

Paul D'Agnolo  
*Farmland Preservation  
Specialist*

pd'agnolo@scc.wa.gov  
564-669-0972



Washington State  
**Conservation  
Commission**