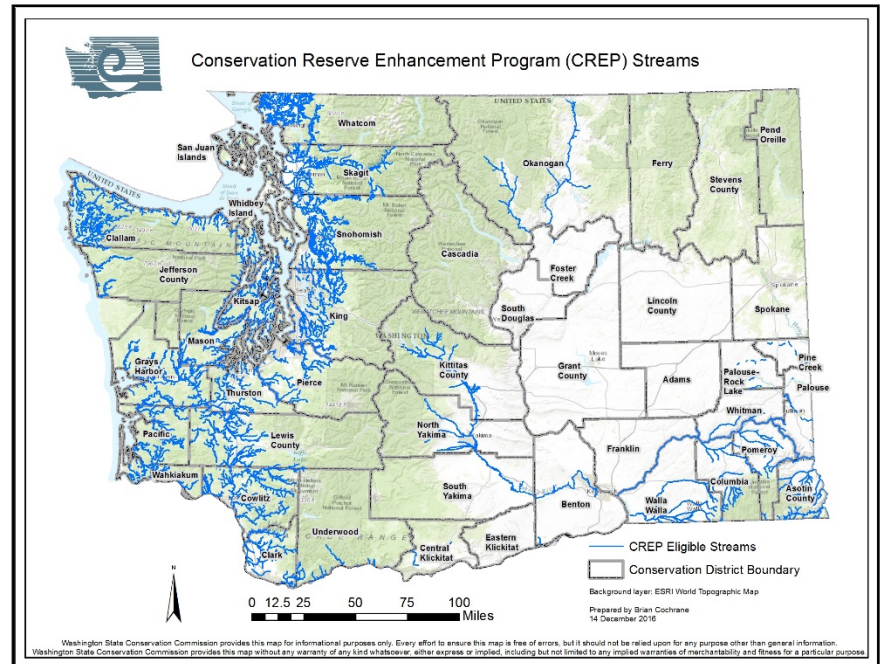


# Conservation Reserve Enhancement Program (CREP) Eligible Stream Additions



Washington State  
Conservation  
Commission

Prepared for the Washington Conservation  
Commission

Brian Cochrane, July 15, 2021

# THE PROCESS TO ADD A CREP STREAM

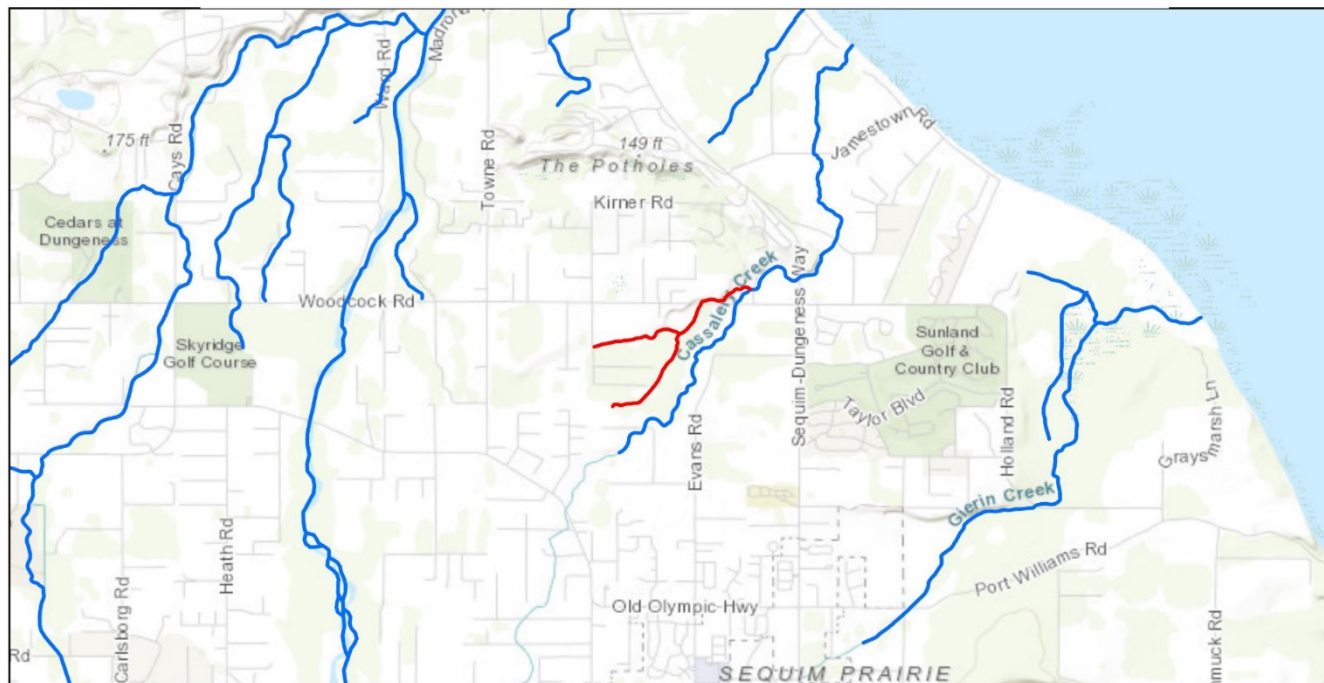


- The CD consults with WDFW and Tribes for guidance on where riparian habitat is a limiting factor salmon and steelhead.
- Stream segments not currently designated for CREP, where there is a **salmonid presence, or a high potential for presence**, can be identified for possible nomination for CREP.
- **WDFW and Tribe** should identify those stream segments where riparian **habitat is a significant limiting factor** for salmonids.
- Develop a written justification for each nominated stream segment.
- Obtain the **concurrence the FSA County Committee**.
- Submit the designated stream segments, to the Conservation Commission.
- The Washington CREP Coordinator will submit the nominations to the **Conservation Commission** and **FSA State Committee** for approval or disapproval.
- Approved stream segments will be added to the GIS data base by the Conservation Commission, with a copy provided to the FSA GIS Specialist for distribution to Service Center servers.

All subject to a 10,000 mile cap for the state



Conservation Reserve Enhancement Program (CREP)  
Proposed Stream Addition  
Clallam Conservation District



0 0.38 0.75 1.5 2.25 3  
Miles



Legend

- Proposed Addition: tributary of Cassalery Creek
- CREP Eligible Streams
- - - Conservation District Boundary

Background layer: ESRI World  
Topographic Map

Prepared by: Brian Cochrane  
6 April 2020

Washington State Conservation Commission provides this map for informational purposes only. Every effort to ensure this map is free of errors, but it should not be relied upon for any purpose other than general information.  
Washington State Conservation Commission provides this map without any warranty of any kind whatsoever, either express or implied, including but not limited to any implied warranties of merchantability and fitness for a particular purpose.

Washington State



Conservation  
Commission





Dahl's Custom Upholstery  
Tim's Custom Cabinets

Google

Davis Sand & Gravel





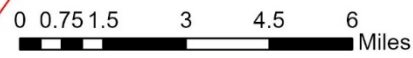








# Conservation Reserve Enhancement Program (CREP) Proposed Stream Addition Palouse Conservation District



## Legend

- CREP Eligible Streams
- Proposed Addition: Steptoe and Stuart Creeks
- - - Conservation District Boundary



Background layer: ESRI World Topographic Map

Prepared by: Brian Cochrane  
11 June 2021

Washington State Conservation Commission provides this map for informational purposes only. Every effort to ensure this map is free of errors, but it should not be relied upon for any purpose other than general information. Washington State Conservation Commission provides this map without any warranty of any kind whatsoever, either express or implied, including but not limited to any implied warranties of merchantability and fitness for a particular purpose.









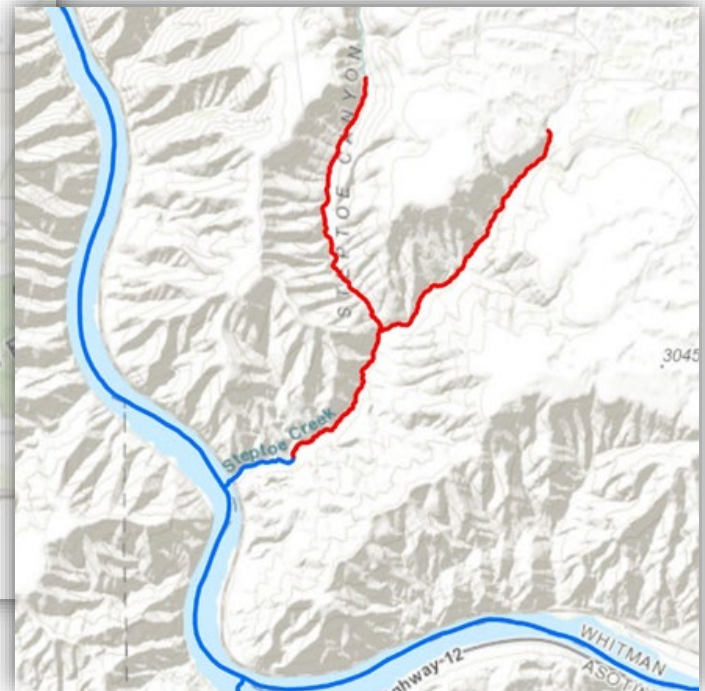
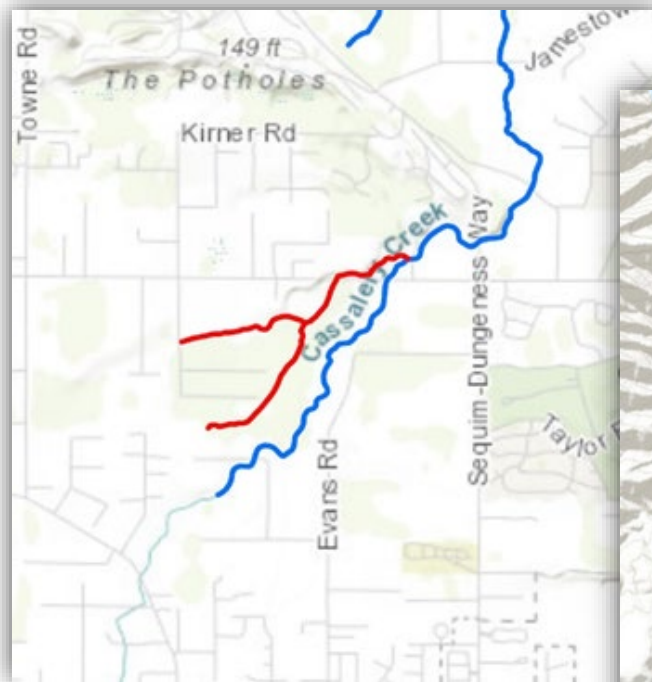






# •Staff Recommended Action

Motion to approve designation of 9.4 miles of eligible stream segments for CREP in Clallam and Palouse CDs per maps at Exhibit A.



Washington State



Conservation  
Commission

New Total = 9,636.42 miles