



June 10, 2019

Mr. Bijay Shrestha  
Tigo Energy Inc.  
420 Blossom Hill Rd.  
Los Gatos, CA 95032-4511

Subject: Tigo PVRSS (PV Rapid Shutdown System) Listing.

Mr. Shrestha,

Under PV Rapid Shutdown System certifications, UL evaluates specific PV rapid shutdown equipment to be used in combinations to create a Photovoltaic Rapid Shutdown System (PVRSS) under the UL categories (CCNs) QIJS and QIJS7. These systems are evaluated to UL 1741, ed 2, with a Revision date of 2018/02/15 to verify that the combination of equipment within the system configuration provides a rapid shutdown function compliant with the requirements of (NFPA 70) NEC section 690.12.

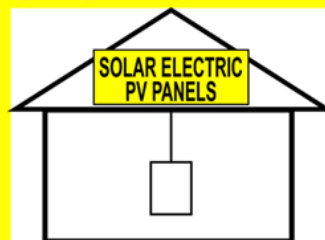
Systems are made up of many devices of PV rapid shutdown equipment, and UL evaluates these devices separately from the total system (examples given: inverters under UL CCNs (QIKH), (QHYZ) AC modules, (QIIO) DC controls, and other associated devices as PV RSE (PV Rapid Shutdown Equipment) under UL category QIJW). Devices evaluated as PV Rapid Shutdown Equipment are intended to become a part (subassembly equipment) of an overall PVRSS (System).

The evaluation of a device as QIJW equipment does not indicate it provides complete rapid shutdown functionality on its own. The energy created and stored in a total PV system must be verified for compliance for rapid shutdown with all the system's subassembly equipment connected under the PVRSS (System) QIJS Listing.

The device designated to initiate Rapid Shutdown for the above systems shall be provided with a permanent marking including the following wording:

## SOLAR PV SYSTEM EQUIPPED WITH RAPID SHUTDOWN

TURN RAPID SHUTDOWN  
SWITCH TO THE "OFF"  
POSITION TO SHUT DOWN  
PV SYSTEM AND REDUCE  
SHOCK HAZARD IN ARRAY



WHEN USED WITH **Tigo TS4**

Tigo systems certified under QIJS and QIJS7 shall be clearly marked with the above label, to meet the 2017 NEC 690.56 C(1) rapid shutdown marking requirement.

This label shall be shall be located where visible, no more than 1m (3ft) from the service disconnecting means to which PV system are connected, per NEC 690.56.C (1)

The UL Listing under QIJS documents the subassembly equipment evaluated for use as part of a certified PV rapid shutdown system so that installers can source the correct equipment and Authorities Having Jurisdiction (AHJs) can inspect and verify the combinations. Under the Manufacturers Listing each PV Rapid shutdown system build option is given a unique identifier. Each system identifier then indicates the combination of subassembly equipment that can be used to make up that system as part of the UL certified PV Rapid Shutdown System.

Sincerely

Scott Picco  
Business Development Manager

Any information and documentation involving UL Mark services are provided on behalf of UL LLC (UL) or any authorized licensee of UL.