

Commission for Environmental Cooperation Report Athabasca Tailings Ponds II

Implications for Downstream
Communities

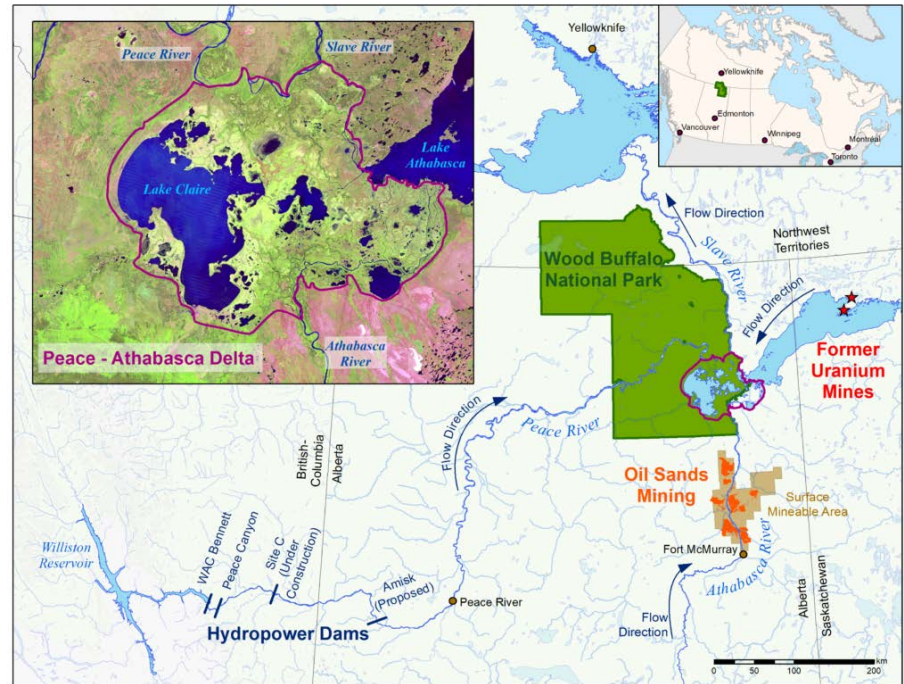


Mikisew Cree First Nation

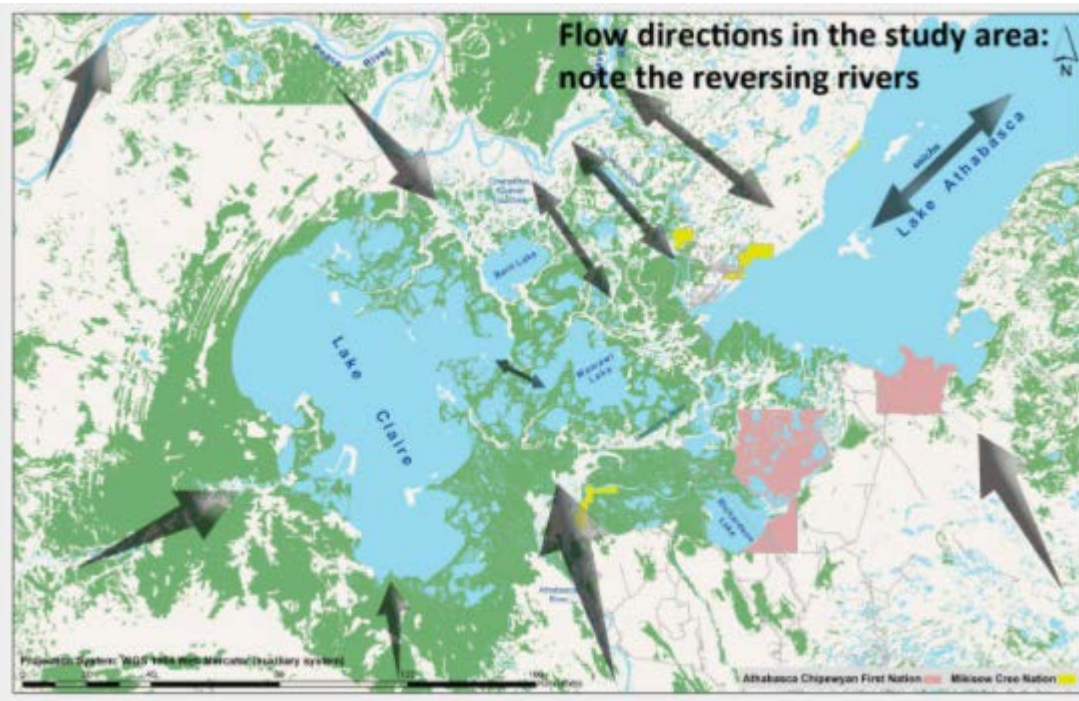
- Signatory to Treaty 8, 1899
- Traditional lands encompass the entire Athabasca Oil Sands
- People of the Peace-Athabasca Delta and the Athabasca River System
- Rely on our traditional lands to maintain our culture and way of life



The Peace Athabasca Delta is Mikisew's Home






The Peace Athabasca Delta receives water and sediment from the Athabasca



- Great volumes from the Athabasca and Peace Rivers create the Delta
- The role of sediment transport in movement of contaminants to PAD is poorly understood.

The Peace Athabasca Delta is Under Stress

Valued Component	Current Trends and Stressors	Trend Direction
PAD Water Quality	Indigenous Traditional Knowledge indicates decreased water quality over the long term, while the water quality index indicates a “fair” trend over the last six years.	
Athabasca River Water Quality	Increasing concentrations of Mg, Na, Al, Se, Fe, Ar, PAHs and PACs	
Groundwater Quality	Information is limited.	

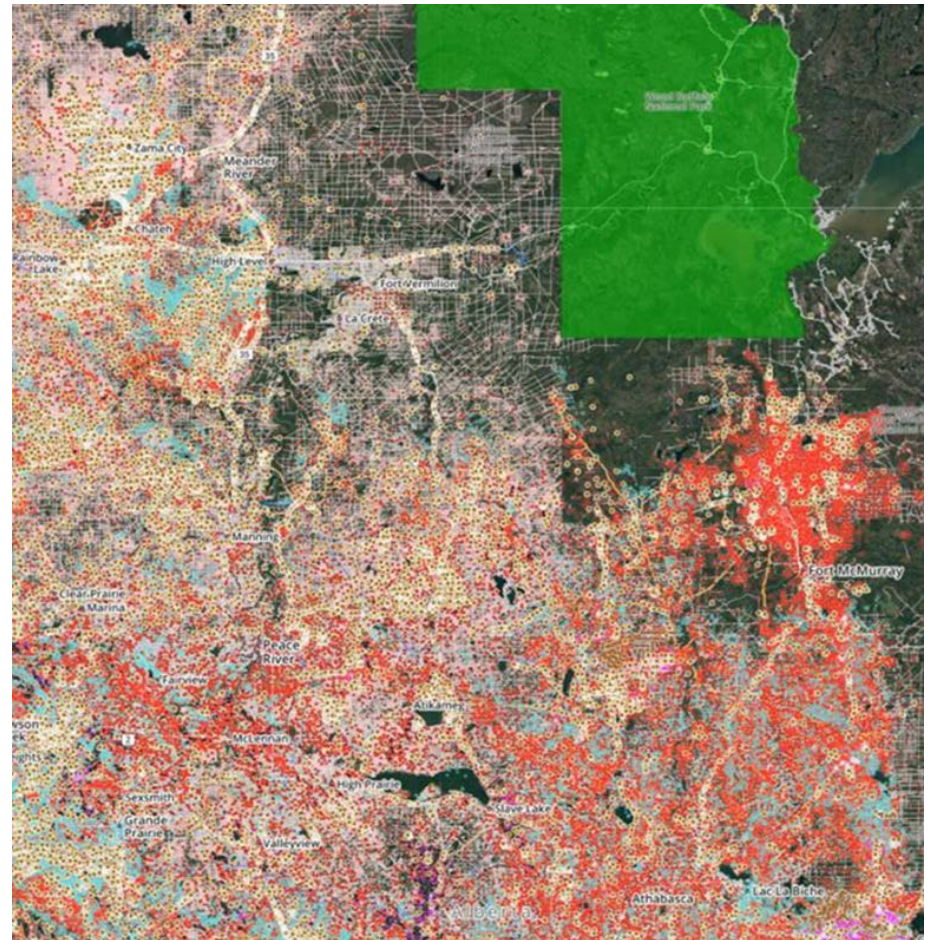
The CEC report validates community members' experience



From: <https://www.youtube.com/watch?v=JY7zEPEuv00>

Future Challenges?

- Our region and delta is at risk.
- The pace and scale of development has been unprecedented.
- We seek certainty that environmental impacts will be managed.
- The Gov't must uphold their legal treaty obligations in protecting our health, rights and culture.



Thank You

