

MODEL YLR-3F 3000KN

RESISTIVE STRAIN GAGE BASED LOAD CELL

Model YLR-3F Resistive Strain Gage Based Loadcell

Features

- ※ Wide range of ratings
- ※ High inherent frequency

SPECIFICATIONS:

Capacity 3000 kN

Full Scale Output: $>1.0\text{mV/V}$

Non-linearity: 0.5% Full scale

Hysteresis: 0.5% Full scale

Repeatability: 0.3% Full scale

Bridge resistance: 700 ohms

Rated Excitation: 10V DC (15V maximum)

Insulation Resistance: $>500\text{megohms}$

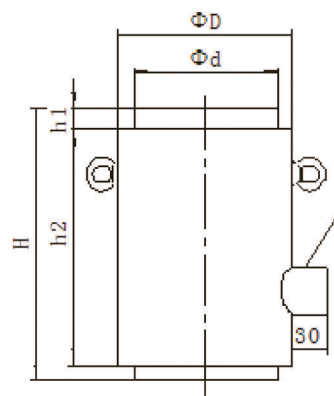
Operating temp: $-10\sim+55^{\circ}\text{C}$

Temp zero variation: 0.4% Full scale/ 10°C

Overload capability: 20% Full scale

Cable Length: 2m

Cable Color Code:	Red	+Excitation
	White	-Excitation
	Yellow	+Signal
	Blue	-Signal



Cup. (kN)	Dimens. ($\Phi d \times \Phi D \times H \times h1 \times h2$) mm
3000	$140 \times 175 \times 220 \times 12 \times 196$



C S T INSTRUMENTS(THAILAND)LTD.,PART.

95 Romklao Road, Klongsam-Praves,
Ladkrabang, Bangkok 10520

Tel.02-915-1693-5, Mobile.086-086-2000

Email : sales@cst.co.th, www.cst.co.th

Dealer