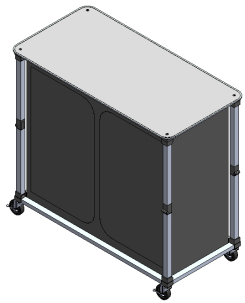


# Kit Assembly

## Step by Step

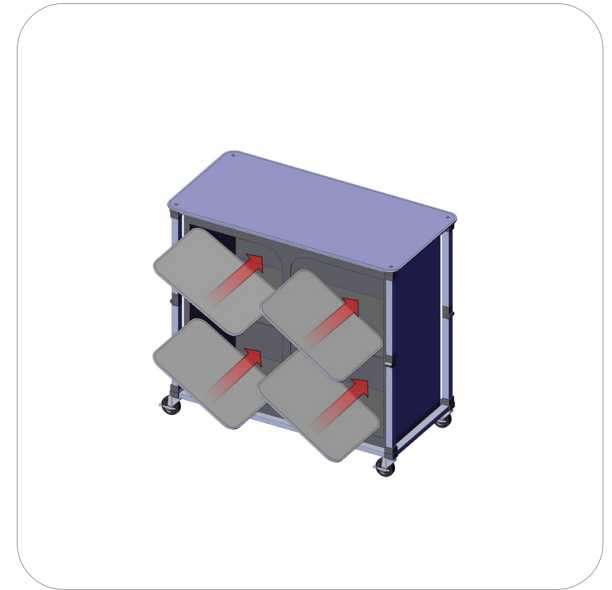
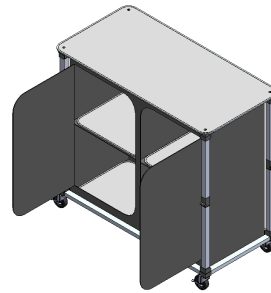
### Step 1.

Unfold and lock legs.



### Step 2.

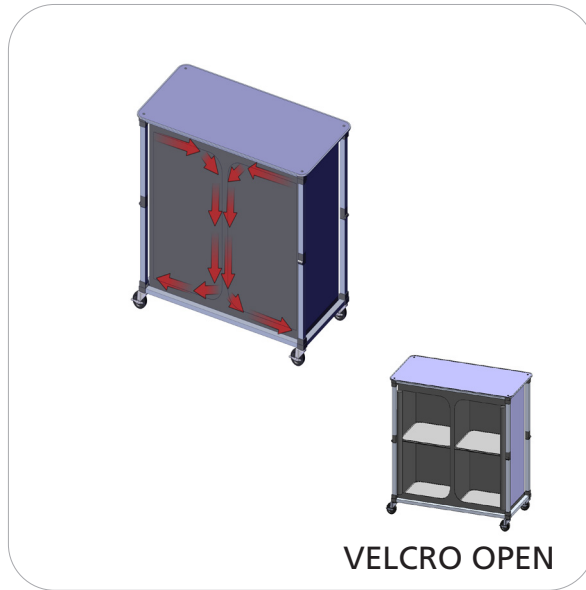
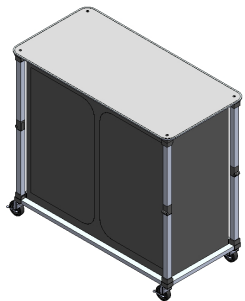
Unzip and insert shelves.



### Step 3.

Zip door to close or roll up velcro to stay open.

If graphics have been purchased move on to step 4, otherwise Set-up is complete.



### Step 4.

Apply graphics by pressing the sides of the graphics onto the counter, making sure the velcro bands are aligned with one another.

Set-up is complete

