



Belmont
Healthcare

AUG 2023

THE BELMONT THYMES

A ROUND-UP OF ALL OUR NEWS FROM OUR CARE TEAMS AT
EDENDALE LODGE, HASLINGTON LODGE, MADEIRA LODGE & WOMBWELL HALL
AND OUR HOMECARE SERVICES

Madeira Lodge Care Home Embraces the Aloha Spirit!

Madeira Lodge was transformed into a slice of Hawaii with our vibrant Hawaiian-themed BBQ. The sun may not have been as tropical as Honolulu's, but the atmosphere, music, and joy made it feel like a serene Hawaiian beachside afternoon.

Flower garlands adorned the necks of our residents, staff, and guests, and vibrant Hawaiian shirts added a burst of colour to every corner.

The highlight was undoubtedly the heartfelt conversations, shared laughter, and special moments captured. We watched as our residents tapped their feet to the rhythm and shared stories of their own tropical adventures.

We extend our deepest gratitude to all who attended and added their own sparkle to the day. As the Hawaiian saying goes, "Aloha ke kahi i ke kahi" – Love is everywhere, and it was certainly everywhere at Madeira Lodge that day. Until our next gathering, we send you our love and aloha.



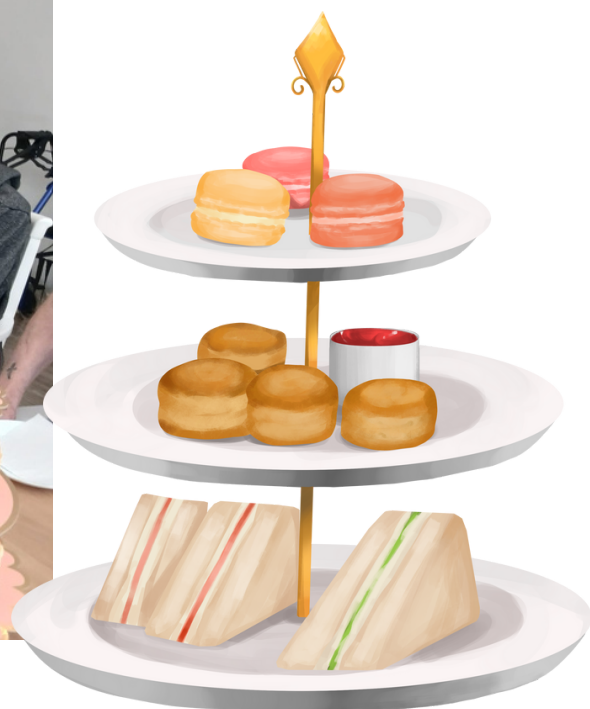
Haslington Lodge Care Home Celebrates Afternoon Tea Week in Style!

A delightful British tradition blooms brighter than ever – Afternoon Tea. This year, Haslington Lodge Care Home wholeheartedly embraced this custom, offering residents and guests a timeless afternoon tea experience.

No afternoon tea is complete without the crowning glory of scones. And at Haslington, they were not just any scones. Golden, buttery, and perfect with generous dollops of jam and clotted cream.

Our team at Haslington pulled out all the stops to ensure a grand, authentic experience. The tables were draped in elegant linens, adorned with fine China, and blooming with fresh flowers. Soft melodies played in the background, completing the serene atmosphere.

Thank you to all who participated and made this event a resounding success. We raise our teacups to you!



Wombwell Hall Care Home Shines Bright with a 5-Star Review!

We are elated to announce that Wombwell Hall Care Home has been graced with a resounding 5-star review.

Feedback is the compass that guides us, and when it's as glowing as this, it not only reaffirms our commitment to excellence but also warms our hearts. We are eager to share with you the highlights of this commendation:

With mention to staff politeness and conviviality, respect and patience, such words are a testament to the passion, dedication, and genuine kindness that Team Wombwell brings to our care home each day.

Their unwavering commitment to our residents, families, and the broader community ensures that Wombwell Hall is not just a care home, but a sanctuary of warmth, respect, and understanding.

Let's come together to celebrate this milestone and show our Team Wombwell the appreciation they truly deserve. Here's to many more moments of excellence, compassion, and 5-star experiences!

See our  Review

A lovely care home, with excellent staff.

The grounds are beautiful and the residents are able to sit outside.

*The food is good and the facilities and entertainment
are also good.*

*The staff take the time to interact with the residents in a convivial
manner, showing respect and patience with the residents.*

*There are lots of forms of entertainment for the residents and ways
for them to feel included on a daily basis.*

**A Lovell - Family Member
Wombwell Hall, Gravesend**



belmonthealthcare.co.uk
0333 444 0121



Edendale Lodge Care Home's Refreshing Day Out at Everton Park

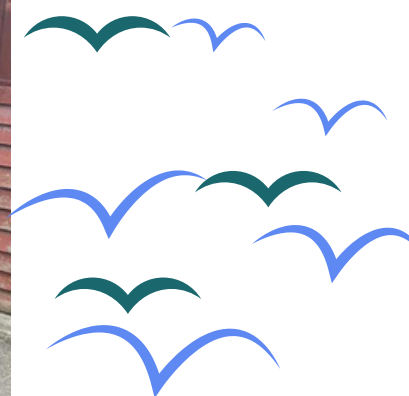
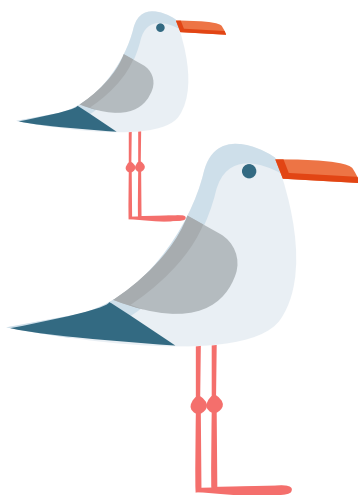
What could be more refreshing than a day out surrounded by nature, chirping birds, and the gentle rustle of leaves? Edendale Lodge had a delightful to Everton Park, playing the perfect host to a good day out.

We were greeted by flocks of friendly birds, as we spent a magical morning feeding these feathery friends, watching their playful antics and basking in their company.

It's often said that a dose of fresh air does wonders, and our trip to Everton Park was a testament to that. The laughter, the camaraderie, and the simple joys of being in nature reminded us that sometimes it's the simplest activities that bring the most joy.

Thank you to our staff for organising this delightful trip and ensuring everything ran smoothly.

Here's to many more adventures, big and small!



Belmont at Home Midlands Team Clinches 'Top 20 Home Care Award 2023'!

It is with immense pride and joy that we announce a milestone achievement for our dedicated Belmont at Home Midlands Team. We've been recognised by homecare.co.uk and awarded the 'Top 20 Home Care Award 2023' in the West Midlands!

While we extend our heartfelt gratitude to homecare.co.uk for this esteemed recognition, the real stars of the show are undeniably our Belmont at Home - Midlands Team.

Without their tireless efforts, unfaltering commitment, and the love they pour into their work every day, accolades like this would remain a distant dream.

Let this award be a beacon of inspiration, motivating us to continue scaling new heights and setting benchmarks in home care. But for now, a big pat on the back to each one of you! Your hard work, dedication, and the love you infuse into your roles makes all the difference.

Remember, it's not just the care we provide but the heart with which we do it that makes Belmont at Home stand out. Here's to our shining stars, our Midlands Team, and the difference you make every day!



*Here is a pic of our actual award - delivered directly from
[Homecare.co.uk](https://homecare.co.uk)*

Practice Nurse Mandy Hogg Sends her Heartfelt Gratitude

In the realm of healthcare, there's something profoundly touching about personal testimonials. Recently, Madeira Lodge Care Home was privileged to receive a poignant message of gratitude from Practice Nurse Amanda "Mandy" Hogg, whose Aunt, Connie Collins, spent her cherished final days at the home.

In her heartfelt note, Mandy fondly reminisced about Connie's vivacious personality and their shared memories, from shopping sprees in Dorset to family dinners under the summer sun. These tales, radiant with nostalgia, serve as reminders of the indelible mark our loved ones leave on our hearts.

Drawing from her background in healthcare, Mandy highlighted the often unseen dedication and tireless effort of the care home staff. "As a health professional, I know just how hard you all work," she wrote, expressing her deep appreciation for the care and compassion shown to Connie.

Mandy's sentiments echo a universal truth in healthcare: the experience of care matters deeply, both for the residents and their families. It's not merely about medical attention but the comfort, memories, and bonds formed within these walls.

At Madeira Lodge, such testimonies reinforce our mission: to offer holistic care that touches not just the body, but also the heart. Thank you, Mandy, for reminding us of our purpose and the impact of care.



Here's what else have we been up to throughout August



Wowed by the Magician's mesmerising array of tricks at Wombwell Hall! Close-up card magic had us all in awe. A magical day for our residents - thanks for the enchanting visit



Celebrating Judy's 80th in style with her husband by her side! A heartwarming video call from her son and a stellar cake by Chef Jason made the day unforgettable



Eyes Down at Bingo! No wins this time, but the joy of the game and great company made it a winning day for all.



Gratitude to The Coppice Primary School, Hollywood for sharing the transformative results of our donation! The revamped outdoor space looks amazing and is sure to be a hit with the kids. Eagerly awaiting our visit for the grand completion!



Email us here to find out more about joining our amazing team:

recruitment@belmonthealthcare.co.uk

Pass it on!



We look forward to bringing you many more updates in our next edition of The Belmont Thymes!

We'd love to hear your feedback - please click the link in here on the stars here to complete our short Customer & Contact Feedback Form



**www.belmonthealthcare.co.uk
enquiries@belmonthealthcare.co.uk
Tel: 0333 444 0121
belmonthealthcare.co.uk/advice-hub**

