

Polarbris

Danish Seiner

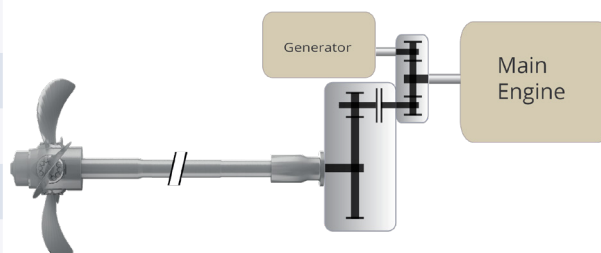


VESSEL INFORMATION

Owner	Polarbris, Norway
Shipyard	Karstensens Skibsværft, Denmark
Hull Number	473
Year Built	2023
IMO Number	TBD
Ship Design	Karstensens Skibsværft, Denmark
Class	DNV No Ice
Engine	Diesel Mechanical
Type:	Power 1370 kW RPM: 900

BRUNVOLL SUPPLY

Reduction Gear	ACG 600
PTO / PTI	PF CO 380 without clutch
Propellers	CP68, 3900 mm nozzle propeller
Nozzle	Brunvoll HE Nozzle
Control System	BruCon
Thrusters	Bow: AR63 LNC - 500 kW Stern: FU37 LTC - 190 kW



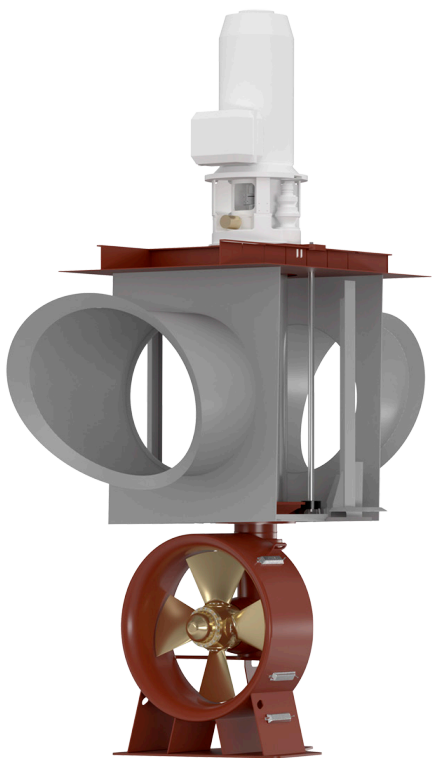
Diesel Mechanical Propulsion

A Diesel Mechanical configuration runs the propeller through a reduction gearbox, with or without a PTO. It is a system that can be driven either with a constant or with a slightly varying engine rpm, dependent on simultaneous running of an electric generator.

A diesel mechanical configuration is a simplistic and reliable system, suitable to all ship types with a narrow service profile.

Polarbris Danish Seiner

Brunvoll propulsion, manoeuvring and automation systems are available in a wide configuration variety. Efficiency and sustainable operation is the target when Brunvoll is designing the system for a specific vessel. Optimum efficiency according to the operating profile of the individual ship and her specific needs.



Brunvoll Combined Retractable Azimuth / Tunnel Thruster

The ultimate multi tool.

Excellent manoeuvre capabilities during operation in rough sea and strong wind.

The combi thruster function as a conventional tunnel thruster in upper position and as an azimuth thruster for 360° operation in immersed position.

The azimuth thruster is typically used during searching and for effective manoeuvring and in case of an emergency situation.

Increases efficiency as peak shaving during operation in combination with main propeller.

Redundancy as power take home (PTH-mode).



BruCon Propulsion and Manoeuvring control

A control system for all types of propulsion, rudder and thruster configurations. The optimal choice for the most demanding system applications.

BruCon is the common automation platform used for all Brunvoll automation products.

Standardised hardware and software components ensure common approach to user interaction, physical appearance and system architecture.