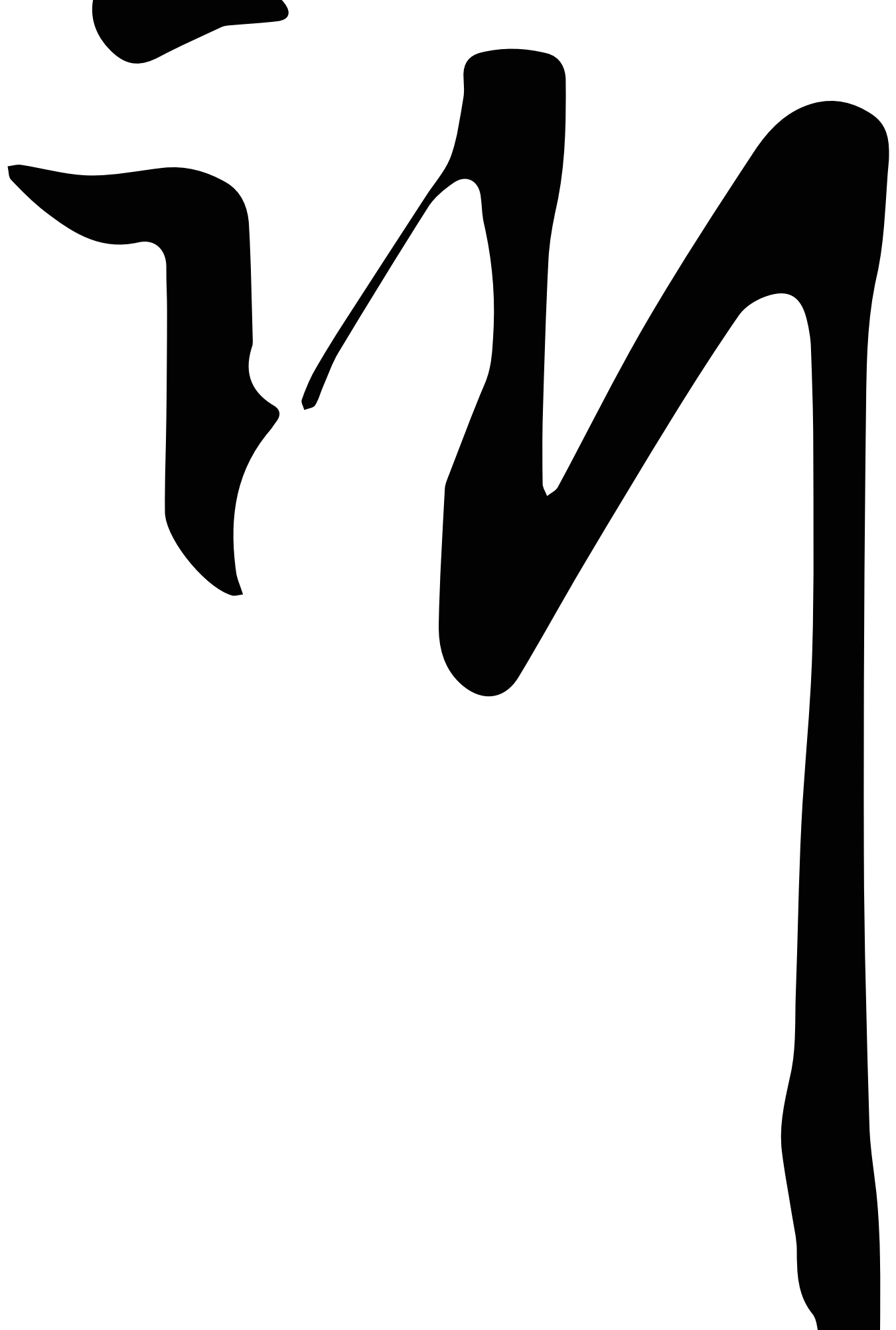




Henrík Ho

Catalogue



LIVING IN DESIGN

OUR STORY

1

Extraordinary stories, spoken through design

The spaces in which we dwell are a reflection of our intricacies, savvy and perceptions. Our connection with objects is undoubtedly poetic. An unconditional love affair that looks beyond wear and tarnishes, leaving behind only the emotional value.

We created Living In Design for this very reason, because furniture is more than a utilitarian fixture of the home. Cutting through the monotony of cut and paste interiors, you yourself may have wondered why we obsess about the clothes in our closet but never the closet itself.

So, we present to you the masters of the trade, designers and established artisans across Asia who have finessed the conventional archetype of furnishings, into a new realm of art. Rich in history and culturally noteworthy, these pieces represent an amalgam of eastern sensibilities and modern avant-garde. Our pioneering artists embrace the distinctive and fuse storytelling within their creations because, well it goes without saying, there's nothing quite as enigmatic as a good tale.

If a picture is worth a thousand words, our homeware is a considerable exchange of minds. Just think, your new dining table won't only host the evening's conversations, but be the hot topic itself. Extraordinary stories, spoken through design. This is our philosophy.

HENRIK



HO

IF MY HOME IS A
SHACKLE, I WILL
CARRY IT FOR A
LIFETIME. IF MY HOME
IS A HAMMOCK IN THE
PARK, LET ME LIE IN
IT A LITTLE LONGER.

Modern society is so impetuous. We seem to live our lives in the grip of external forces, leading many of us to suffer from mental anguish. It's a current that is washing through society, and it takes every ounce of yourself not to be swept away by it.

This is why my designs, besides offering a basic functionality, ingrain a calm and peaceful aura that people can ground themselves with. Harnessing the quiet, pure, and natural tenets of zen philosophy to dissolve the oppositions of the outside world. I firmly believe our homes should be a beacon of mindfulness to maintain a sense of self-purification for when we walk out into the world.

I come from a family that owns a furniture factory, but my most significant influence is actually my wife, who is a Buddhist and meditation teacher. Although I don't practise Buddhism myself, I have great respect for it. In much of my work and in daily life, I draw a lot of strength from its teachings, like the pursuits of inner peace, using meditation to be more aware of your own existence and practising appreciation for the little things. This is particularly useful in a world where the noise of the outside is stronger than the one resonating from within.

This is why I also look to nature when I create. All the beauty in the world is endowed to us by nature. Time spent on the beach, within the mountains, on grasslands or in the park heal our hearts naturally. Whenever I can, I try to stay close to nature, drawing comfort and energy from it. Having these emblems of nature as part of our homes, as pieces of everyday life, feeds our souls. Amongst nature is where we belong. Ancient civilizations had us beat in that regard.





HOMWARE THAT IS INGRAINED WITH
A GROUNDING AND ZEN AURA





Soft Stone Lounge Chair

The Soft Stone Lounge Chair by Henrik Ho embodies the zen spirit of the East. Calm, detached, firm and unequivocally soft all at once, its presence brings latent energy into every space it enters. Crafted with the intention of finding a relaxed inner state, this lounge chair looks toward nature to bring balance in a chaotic world.

Lower than most seats, it sits closer to the ground, drawing you towards the natural earth. Its solid ash wood frame is polished by hand before being fastened with two independent cushions. Like rounded pebbles, they feel smooth to the touch. A chair for meditative thought and serene pursuits, it feels sculptural in nature, providing a striking silhouette from every angle. Made with a lightweight and breathable polyester, this elegant piece is available in two shades of matte black and off white.

Length 740 mm
Depth 850 mm
Height 720 mm

Available in Matte Black and Off White

£1,900





Ethereal Side Table

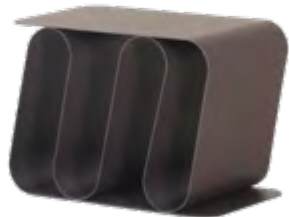
The Ethereal Side Table by Henrik Ho is a study in the fluidity of a single steel sheet. Taking advantage of the plasticity of metal, it is slowly bent and coaxed into shape, gracefully folding into itself with a delicateness not often associated with steel. This side table oozes with a satisfying rhythm, making it a visual statement piece.

Both functional and artistic, the Ethereal Side Table can be used both indoors as a bedside table and outdoors as a reading caddy. With 4 openings nestled within it, each makes for an ideal space to house books and magazines. Available in three neutral shades of beige, taupe, and stone.

Length 500 mm
Depth 300 mm
Height 355 mm

Available in Beige, Taupe and Stone

£900



Grotto Bench

As unique as it is stylish, the Grotto Bench is inspired by the Buddhist monks who would retreat to hidden caves to find solace in meditation. This bench captures the power of serenity and silence, featuring three-pronged legs reminiscent of stalagmites rising from the floors of grottos. Its organic shape feels both natural and comfortable, easily seating two people at once.

Crafted with a solid wood and plywood interior, it is swaddled in sponge before being upholstered in a wool blend. Ideal for adding a touch of Zen to your home whilst also making a statement, the Grotto Bench is available in two tranquil colours.

Length 1090mm
Depth 360 mm
Height 385 mm

Available in Granite and Pumice

£1,800



Ethereal Side Table

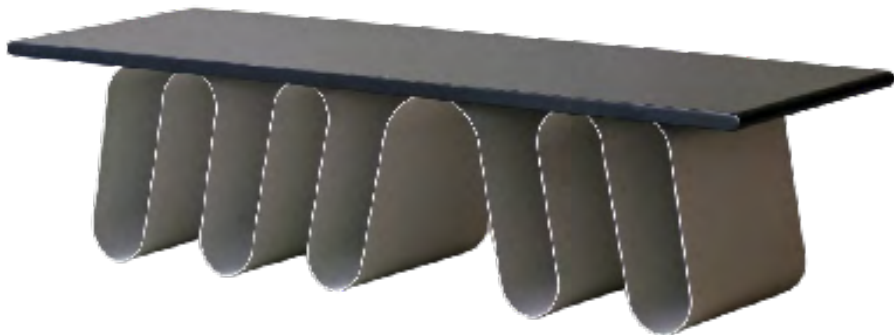
The Ethereal Side Table by Henrik Ho is a study in the fluidity of a single steel sheet. Taking advantage of the plasticity of metal, it is slowly bent and coaxed into shape, gracefully folding into itself with a delicateness not often associated with steel. This side table oozes with a satisfying rhythm, making it a visual statement piece.

Both functional and artistic, the Ethereal Side Table can be used both indoors as a bedside table and outdoors as a reading caddy. With 4 openings nestled within it, each makes for an ideal space to house books and magazines. Available in three neutral shades of beige, taupe, and stone.

Length 1340 mm
Depth 480 mm
Height 330 mm

Available in Beige, Taupe and Stone

£3,600





Grotto Shelf

The Grotto Shelf series is inspired by its namesake, closely tied to the spirituality and peace that Buddhist monks would seek in such a place. As places of meditation and reflection, the rugged and organic surroundings are mirrored in the craftsmanship of this shelf. Using a fiberglass structure and clay mix finish to create raw and irregular textures - it draws from the tenets of wabi-sabi, making the Grotto Shelf series the embodiment of perfection found within imperfection. Distinct in its shape and presence, its three-pronged legs are reminiscent of stalagmites that rise from the floor of caves, while its upper body offers accessible storage of everyday items. A practical and gentle reminder that our homes should be a retreat from the outside world's noise.

Tall
Length 710 mm
Depth 350 mm
Height 1750 mm

£5,400

Split
Length 710mm
Depth 350 mm
Height 1070 mm

£3,500

Mini
Length 495mm
Depth 350 mm
Height 450 mm

£1,600



Slate Chair

Drawing on natural rock formations, the Slate Chair by Henrik Ho mimics an amalgam of irregular stone slabs fastened together, giving it a striking silhouette that feels minimal yet elevated. The uncomplicated nature of the chair makes it perfect for use as a dining chair or desk chair, and its unembellished design means it will blend in seamlessly with any décor. Embodying both the roundness and jagged characteristics of stone, it is a humble reminder to find beauty in the smallest of details.

Length 505 mm
Depth 510 mm
Height 825 mm

£1,800





HOMWARE THAT IS INGRAINED WITH
A GROUNDING AND ZEN AURA



Dune Lounge Chair

Be calmed by the elegance of the Dune Lounge Chair by Henrik Ho. Its design is plucked directly from the natural world and embodies everything serene and peaceful about nature. This lounge chair's irregular shape mimics the soft, ever-changing contours of sand dunes, while its comfortable sponge interior and upholstery invite you to sit back and reflect. An ideal addition to Japandi-inspired and rustic homes, the Dune Lounge Chair reminds us to stay grounded and enjoy the simple comforts of life.

Length 960 mm
Depth 810 mm
Height 870 mm

£3,990



