



8 Hour

Catalogue

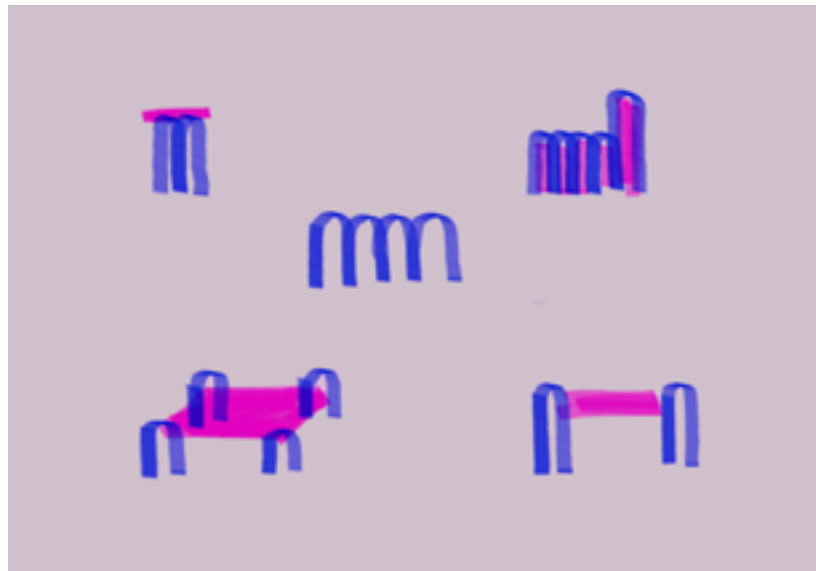
8 HOUR



CURIOSITY RULES
ALL IN DESIGN.
WITHOUT IT,
THE PROCESS OF
CREATING WOULDN'T
BE CREATING AT ALL.

There's value in seeing the world from a child's perspective; I feel children are naturally curious and, therefore, more creatively inclined. I try to keep this childlike wonder for the world alive and ignore the cynical nature of adulthood.

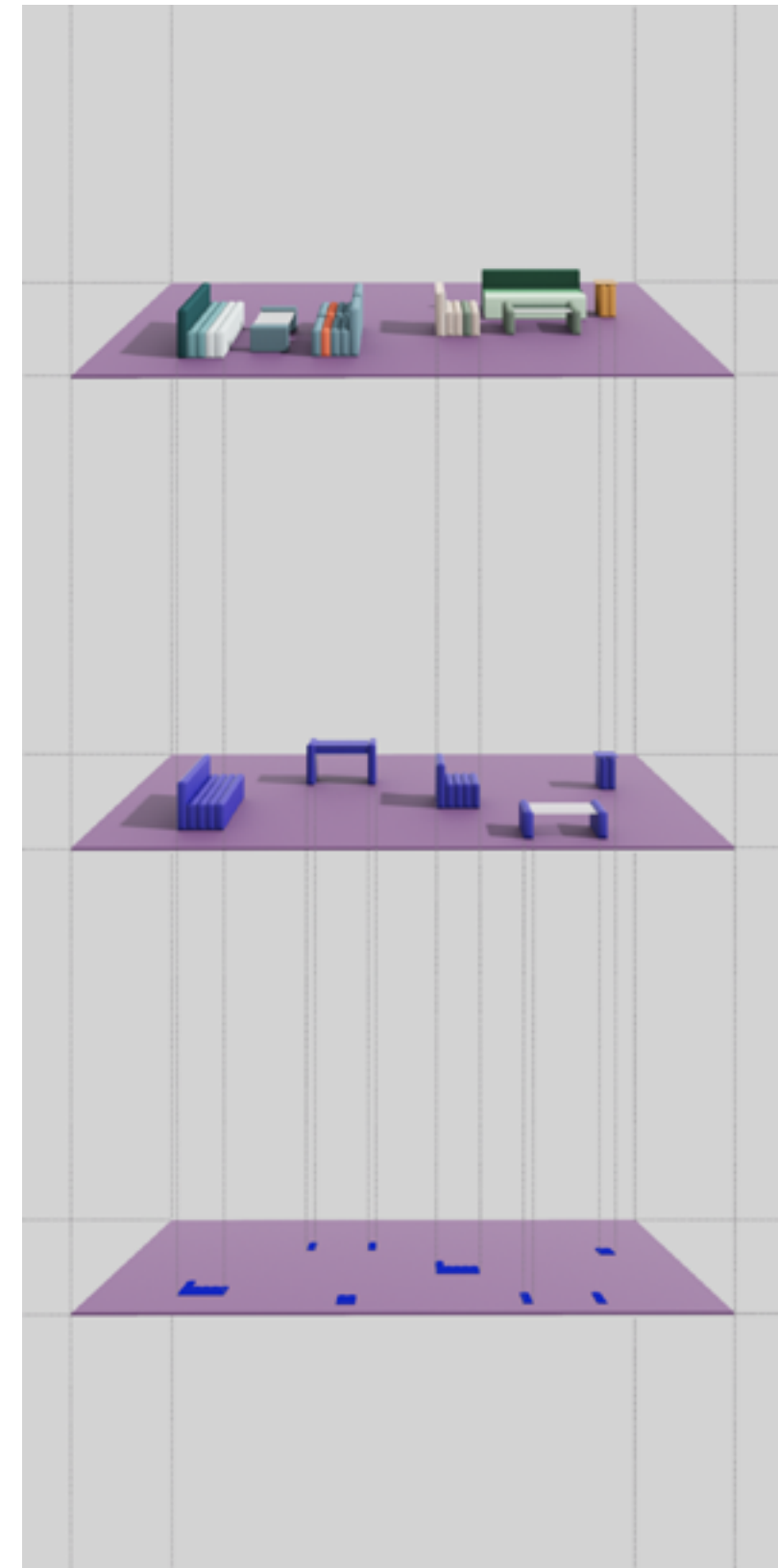
When it comes to life and my artistic expression, my grandfather was an immense influence on me. He came from a background of traditional Chinese medicine but, in his spare time, would practice carpentry in solitude. He crafted many chairs that sat in different rooms of our home. At the time, I did not see them as works of design or creativity, rather a way of life — an adeptness to execute on a necessity with your bare hands. Now

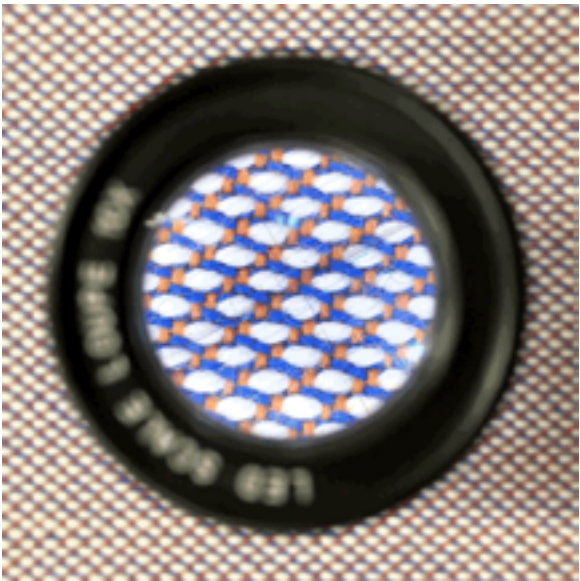


I realise it takes a great deal of acumen, a strength that inspires me to this day.

When I founded 8 Hour design, I knew I wanted to create a studio that values time over everything else. From the beginning, it was always going to be an intimate space for beautiful things, rather than a factory to churn out carbon copies of furniture. It has become a safe place to create freely. That's why the name 8 Hour is so fitting. Here we can compartmentalise our lives better, 8 hours of work, 8 hours of play, 8 hours of sleep. Making up the 24 hour day. Each of those hours is to be treated with equal importance for us all to lead happier lives.

This philosophy bleeds into the furniture we create. We craft homeware that evokes comfort above all else. Nothing sensationalist, just pure contentment. It ebbs and flows with our whims, embracing nature, observing the human body and naturally, paying homage to the environment in which we thrive, Shanghai. Living in a city of constant flux allows us to remain untethered, as if it were daring us to try something new at every turn. This makes every new project our most impassioned, and the most prized creation in that very moment until, of course, the next idea comes to fruition.

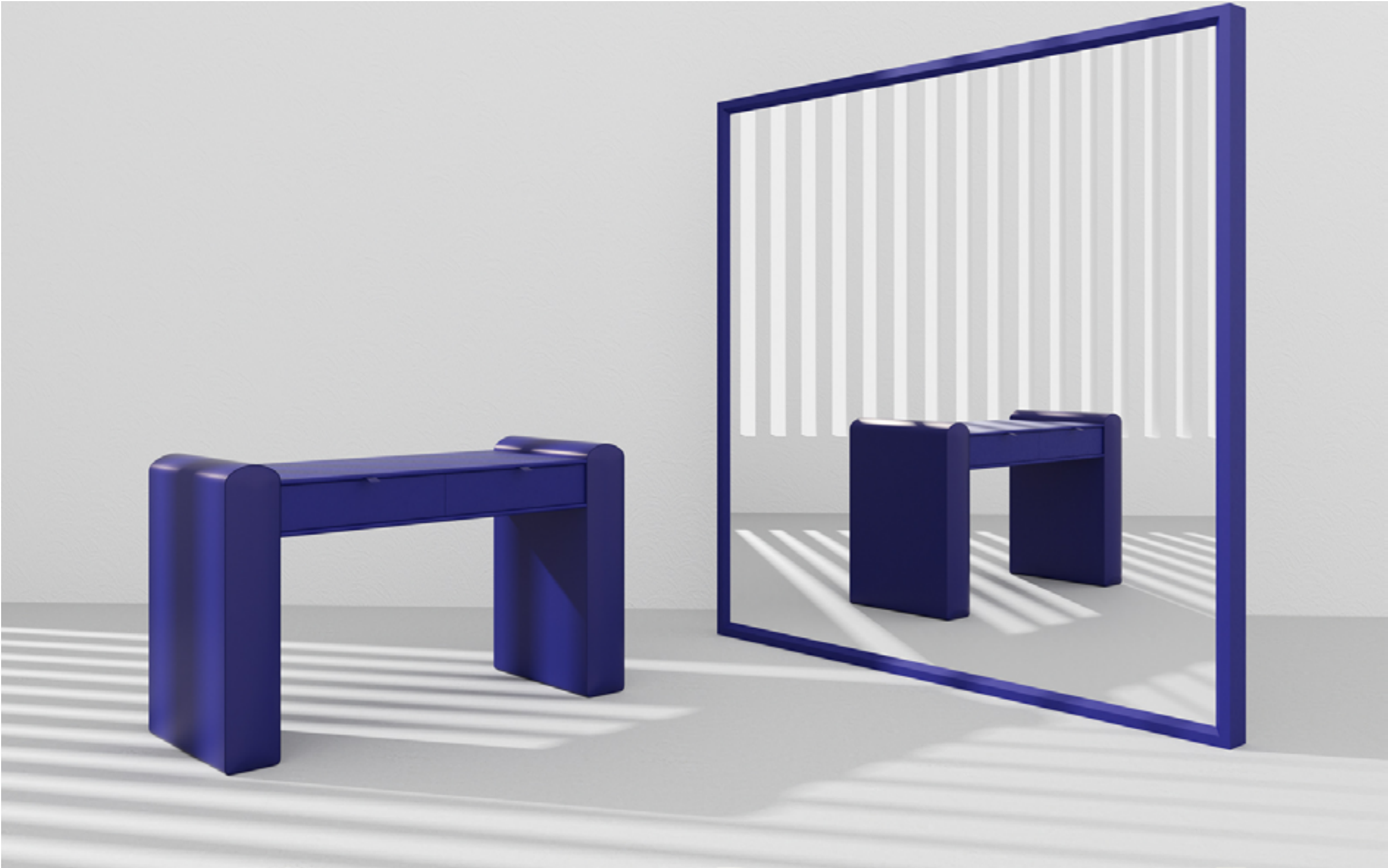




I TRY TO KEEP MY CHILDLIKE WONDER
FOR THE WORLD ALIVE AND IGNORE
THE CYNICAL NATURE OF ADULthood
TO REMAIN CREATIVELY INCLINED.







Vienna Side Table

The Vienna Side Table is elevated by two plush, round-topped ripples. An ideal pedestal to place lamps and objects of desire. Its painted glass top is nestled atop a hardwearing weaved wool base that is crafted sustainably. Its solid wood frame is invisible, allowing its supple exterior to shine. Crafted in a pale blue hue, it seamlessly pairs with the matching Vienna Collection, which includes the Vienna Sofa and Armchair and Tea Table.

Length 400 mm
Depth 400 mm
Height 630 mm

Available in Blue Powder, Sand Castle or Cerise



Vienna Console

Flanked by two plush, round-topped ripples, The Vienna Console adds a gentler touch to the modern workspace. Its painted glass tabletop seemingly nestles into its wool woven legs, crafted with a solid wood frame that remains invisible, allowing its soft exterior to shine.

Two wide drawers can be used to house essential items for your office or study, opened using a soft touch mechanism. This table is equally suitable as a credenza or console, adding inspired textures to rooms lacking variety. Seamlessly pairs with the matching Vienna Collection, which includes the Vienna Sofa and armchair tea table and side table.

Length 600 mm
Depth 1300 mm
Height 780 mm

Available in Charcoal or Iris





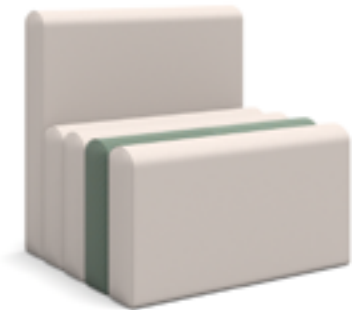
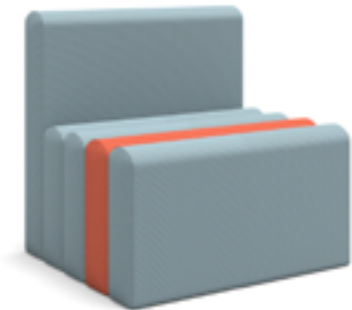
Vienna Mini Sofa

The Vienna Mini Sofa features soft round-topped ripples reminiscent of the classic Vienna ice cream. Layers upon layers held together with a solid wood frame and a sustainable hardwearing woven wool.

Its shape offers up a new three-dimensionality compared to regular cubic chairs, made all the more captivating by its graduation in pink. A minimal armchair that oozes softness to all the senses. Seamlessly pairs with the matching Vienna Sofa.

Length 750 mm
Depth 750 mm
Height 820 mm

Available in Peach, Frozen or Dry Ice



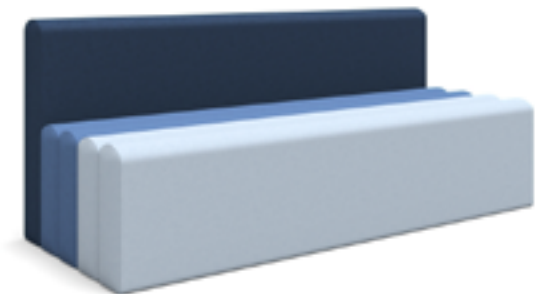
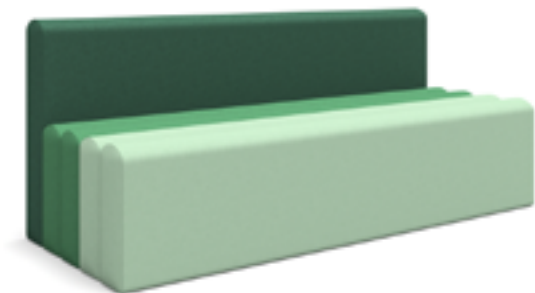
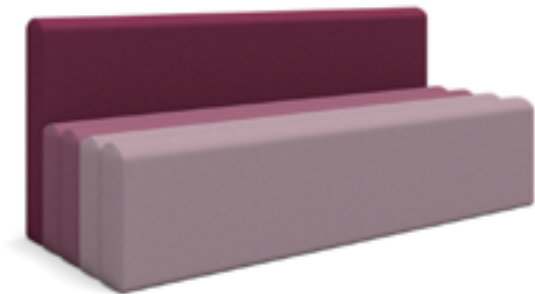
Vienna Sofa

The Vienna Mini Sofa features soft round-topped ripples reminiscent of the classic Vienna ice cream. Layers upon layers held together with a solid wood frame and a sustainable hardwearing woven wool.

Its shape offers up a new three-dimensionality compared to regular cubic chairs, made all the more captivating by its graduation in pink. A minimal armchair that oozes softness to all the senses. Seamlessly pairs with the matching Vienna Sofa.

Length 750 mm
Depth 750 mm
Height 820 mm

Available in Pinkberry, Gooseberry or Blueberry



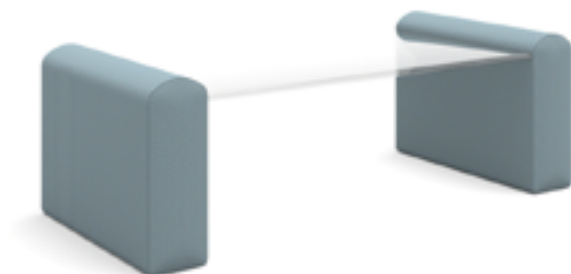
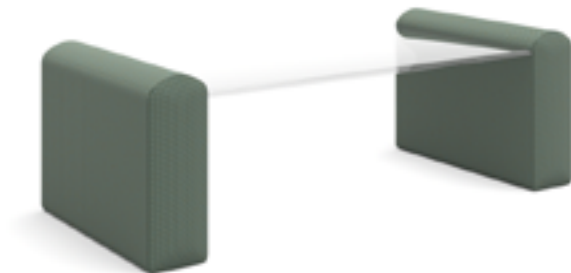
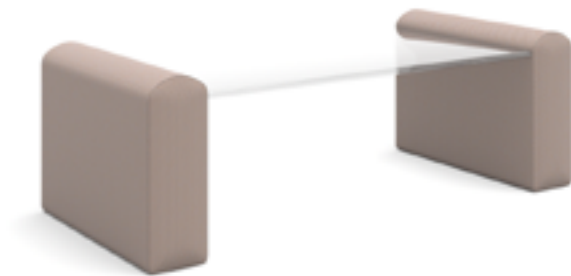
Vienna Tea Table

The Vienna Tea Table is flanked by two plush, round-topped ripples, and is an ideal accompaniment to a spread of tea and biscuits. Its painted glass top is seemingly nestled into the hardwearing weaved wool that is crafted sustainably.

Its solid wood frame is invisible, allowing its soft exterior to shine. Crafted in a pale pink hue, by nature, it feels sweet, velvety, much like Vienna ice cream itself. Seamlessly pairs with the matching Vienna Collection, which includes the Vienna Sofa and Armchair.

Length 500 mm
Depth 1300 mm
Height 430 mm

Available in French Rose, Sage or Bluebell



Cross Dining Chair

Inspired by busy intersections found in major cities, the Cross Chair offers respite from the rush. Crafted with minimal yet powerful electroplated tubing, this construction reinforces the artisan’s desire to instil calm. An x creates the chair’s base, which is subtly revealed on the corners of the chair. Its seat and backrest are fashioned with a sumptuously soft polyester fabric with a delicately ribbed surface. Apt for the dining room, study, office space or patio.

Length 460 mm
Depth 450 mm
Height 800 mm

Available in Mustard, Ash, Deep Sky or Apple





Paper Clip Lounge Chair

Reminiscent of a looped metal paperclip, 8 Hour finds amusement in crafting functional homeware inspired by everyday life and common workplace objects. An inviting seat for lengthy exchanges, its body is abundant with padding. The Paper Clip Lounge Chair's domed seating is akin to two semi-circles, with two looped prongs acting as the elevated base.

This modern lounge chair is encased in a soft, textured wool upholstery, which is produced locally in the United Kingdom. Taking inspiration from Shanghai, where the 8 Hour Studio is based, this armchair merges diversification, vitality, people, things and the city together at once.

Length 820 mm
Depth 650 mm
Height 700 mm

Available in Mustard, Thistle, Ginger, Rust, Fog, Iron, Lime, Pickle, Jeans, Sky or Royal Blue



Paper Clip Dining Chair

Reminiscent of a looped metal paperclip, 8 Hour finds amusement in crafting functional homeware inspired by everyday life and common workplace objects. A distinctive design, void of sharp corners, its body is made of a continuous loop.

The Paper Clip Chair domed seating is akin to two semi-circles, crafted using a soft, textured wool upholstery, which is produced locally in the United Kingdom. Taking inspiration from Shanghai, where the 8 Hour Studio is based, this armchair merges diversification, vitality, people, things and the city together at once.

Length 560 mm
Depth 440 mm
Height 845 mm

Available in Fog, Ginger, Jeans, Lipstick, Mustard, Pickle, Rust or Sky





Cactus and Woodland Pouf

The Cactus and Woodland Poufs bring the majesty of foliage indoors. A playful pouf suitable for children’s bedrooms, play spaces and the living room, it sparks the imagination of all ages. Handcrafted using premium New Zealand lambswool with a felted finish, its interior is filled with a plush, yet supportive foam. Paired them together for a variety of shape and size.

Length 700 mm
Depth 700 mm
Height 400 mm

Cactus Pouf

Length 550 mm
Depth 550 mm
Height 380 mm

Woodland Pouf









Swan Dining Chair

Crafted using a single, uninterrupted piece of steel pipe framing that forms the structure and base of the Swan Chair, its piping is what gives it its name. Minimal, clean lines forged by efficiency and a desire to be concise; it is a seat that exists to be loud and clear. Its base accommodates a padded seat and backrest, upholstered with 100% recycled Kvadrat polyester, to reduce environmental impact and curb the use of natural resources. The edge of the chair tilts slightly upwards, encouraging you to lean back with ease. The Swan Chair is an apt furnishing for an office space, study, dining room or patio.

Length 530 mm
Depth 530 mm
Height 815 mm

Available in Blush, Flax, Seaweed, Pewter or Slate



Swan Armchair

Crafted using a single, uninterrupted piece of steel pipe framing that forms the structure and base of the Swan Armchair, its piping is what gives it its name. Minimal, clean lines forged by efficiency and a desire to be concise; it is a seat that exists to be loud and clear. Its wide base accommodates a broad sponge seat and backrest, bundled up in virgin wool and wild flax textiles, sustainably sourced and made to be compostable.

Length 800 mm
Depth 700 mm
Height 815 mm

The Swan Armchair makes a home feel all the more tranquil by naturally inviting you to lean back comfortably.



Bullet Time Side Table

Suspended in animation and seemingly floating in mid-air, the Bullet Time Side Table's structure evolves depending on where you view it from. Its continuous and broken lines symbolise the movement and stillness of time, the idea that eternity can be found within just a moment. This pedestal is crafted from steel pipes and coated in charcoal lacquer.

Length 600 mm
Depth 800 mm
Height 500 mm

While its base is square, the tabletop is rounded, creating a strong visual juxtaposition. Futuristic and reminiscent of the infamous bullet-time scene in The Matrix, this side table grapples with the perceptions of reality.



