



space

| | |
|---------------------|-----------------------|
| Dimensions | 32 W x 47 L x 60 H in |
| Weight | 472 lbs |
| Effective Bore Size | 25 in diameter |
| Gantry Rotation | 360 degrees |

power

| | |
|----------------|-------------|
| Line Voltage | ~120V |
| Line Frequency | 50-60 Hz |
| Line Current | 5 A standby |
| Peak Current | 20 A max |

components

| | |
|-----------------|---------------|
| Focal Spot Size | 0.6 mm |
| kVp mA Range | 120 - 140 kVp |
| mA Range | 10 - 15 mA |
| Panel | Dynamic |
| Pixel Pitch | 194 μ m |
| Frame Rates | 10 - 30 fps |



S
P
E
C
I
F
I
C
A
T
I
O
N
S



800.709.6726 / xorantech.com

acquisition protocols

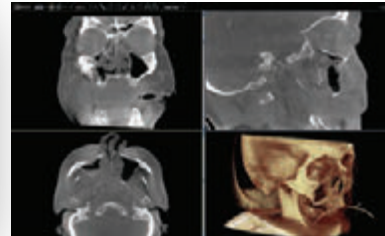
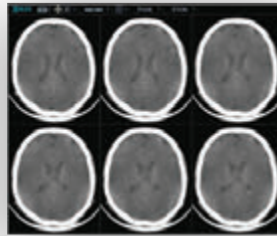
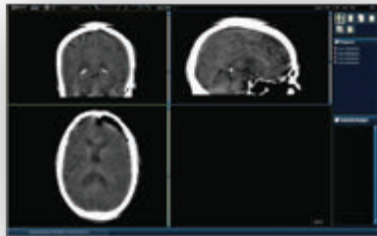
| | Frames | Exposure | Effective Radiation Dose |
|---------------------|--------|----------|--------------------------|
| Bone (Full Dose) | 600 | 20s | 0.233 mSv |
| Brain (Full Dose) | 600 | 45s | 1.070 mSv |
| Brain (Medium Dose) | 520 | 39s | 0.927 mSv |

Pediatric

| | | | |
|------------------|-----|-----|-----------|
| Bone (Low Dose) | 300 | 20s | 0.064 mSv |
| Brain (Low Dose) | 400 | 30s | 0.713 mSv |

reconstruction protocols

| | Field-of-View | Resolution |
|--------------------------|---------------|---------------|
| Bone (Full Dose) | 22 cm axial | 0.3 mm voxels |
| Brain (Full Dose) | 22 cm axial | 0.6 mm voxels |
| Brain (Medium Dose) | 22 cm axial | 0.6 mm voxels |
| Brain (Low Dose) | 22 cm axial | 0.8 mm voxels |
| Region-of-Interest (ROI) | User-defined | ≥ 70 microns |



brain scanning with hard and soft tissue imaging displayed on the built-in monitor



© M.Dach Uni Ulm HNO

turns on a dime

< 4' footprint with zero-degree turning, maneuvers tight spaces with easy storage

