

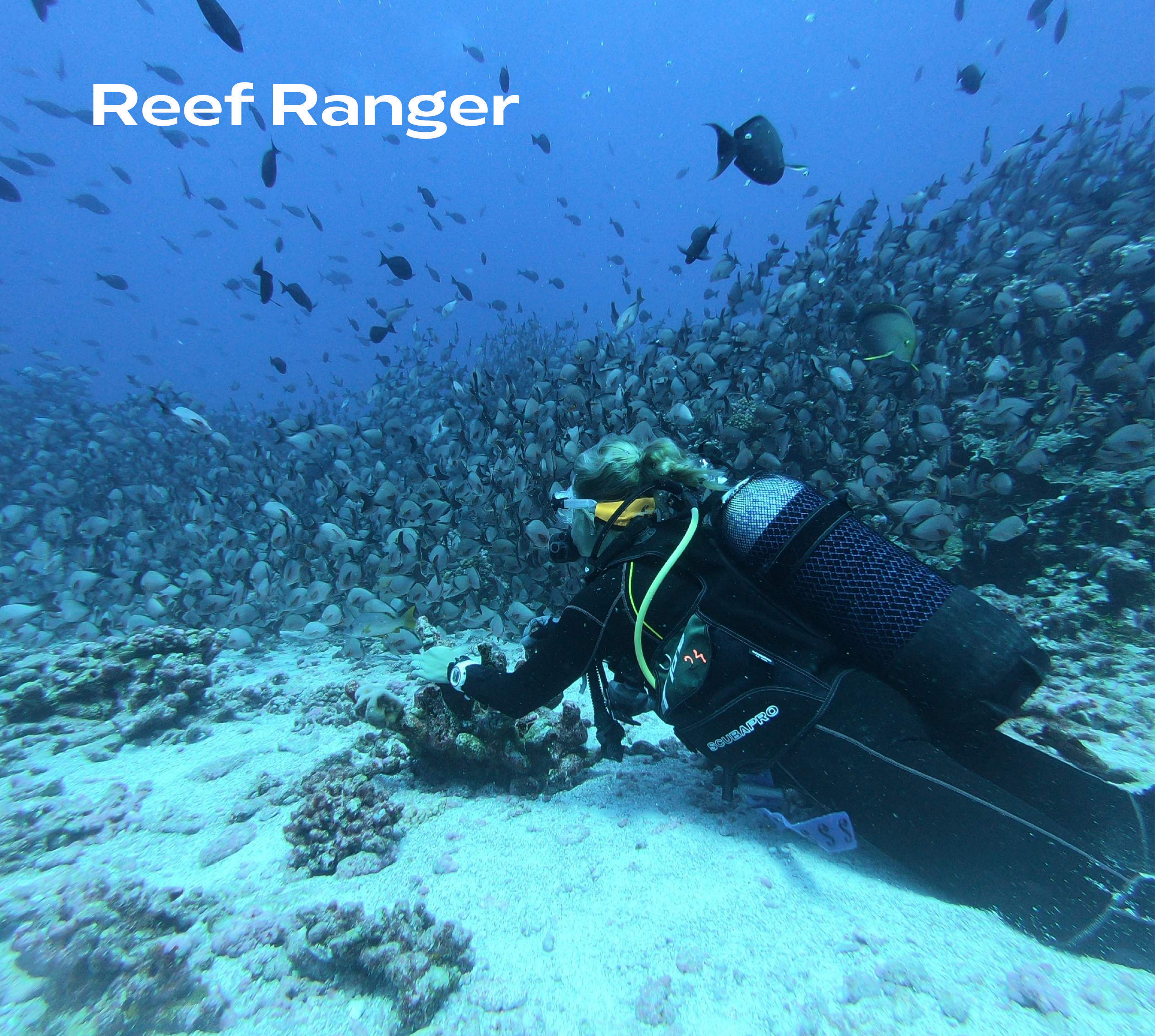
Reef Ranger

Travel to explore and protect
the world of coral reefs



 ReefSupport

Reef Ranger



THE INTERNATIONAL GUARDIANS OF CORAL REEFS

The program is designed to empower passionate individuals with the knowledge and skill sets necessary to restore and preserve local and global reefs and help them to become lifelong stewards that support the ecologically sustainable use of the oceans.

Reef Rangers dive and enjoy the beautiful, breathtaking, and interesting marine landscapes; you will get to know several marine species, meet people with the same interest, try local food, and enjoy all the wonders the magnificent world of coral reefs has to offer!

91%

MPAs lack adequate
staff and rangers

13%

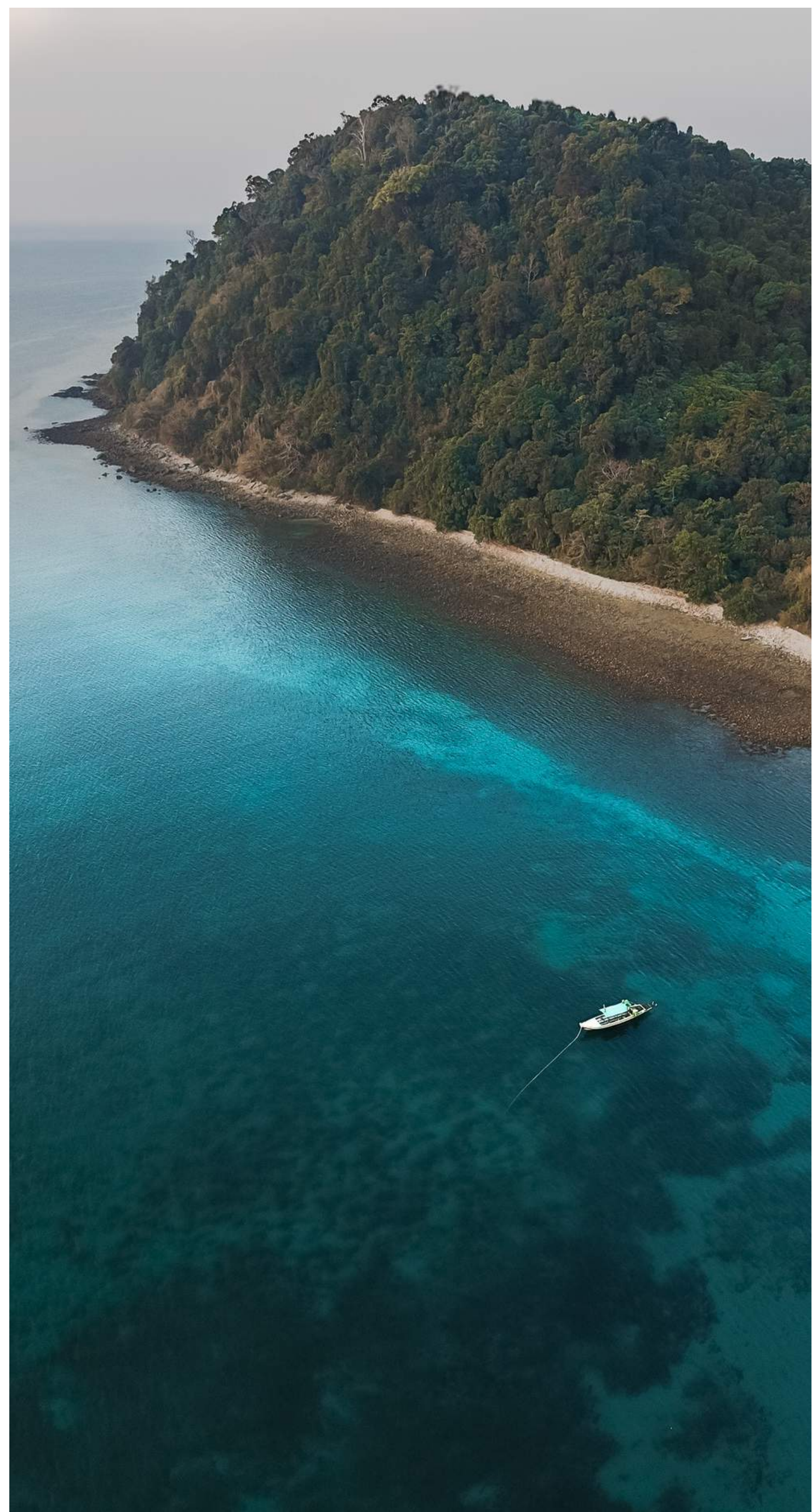
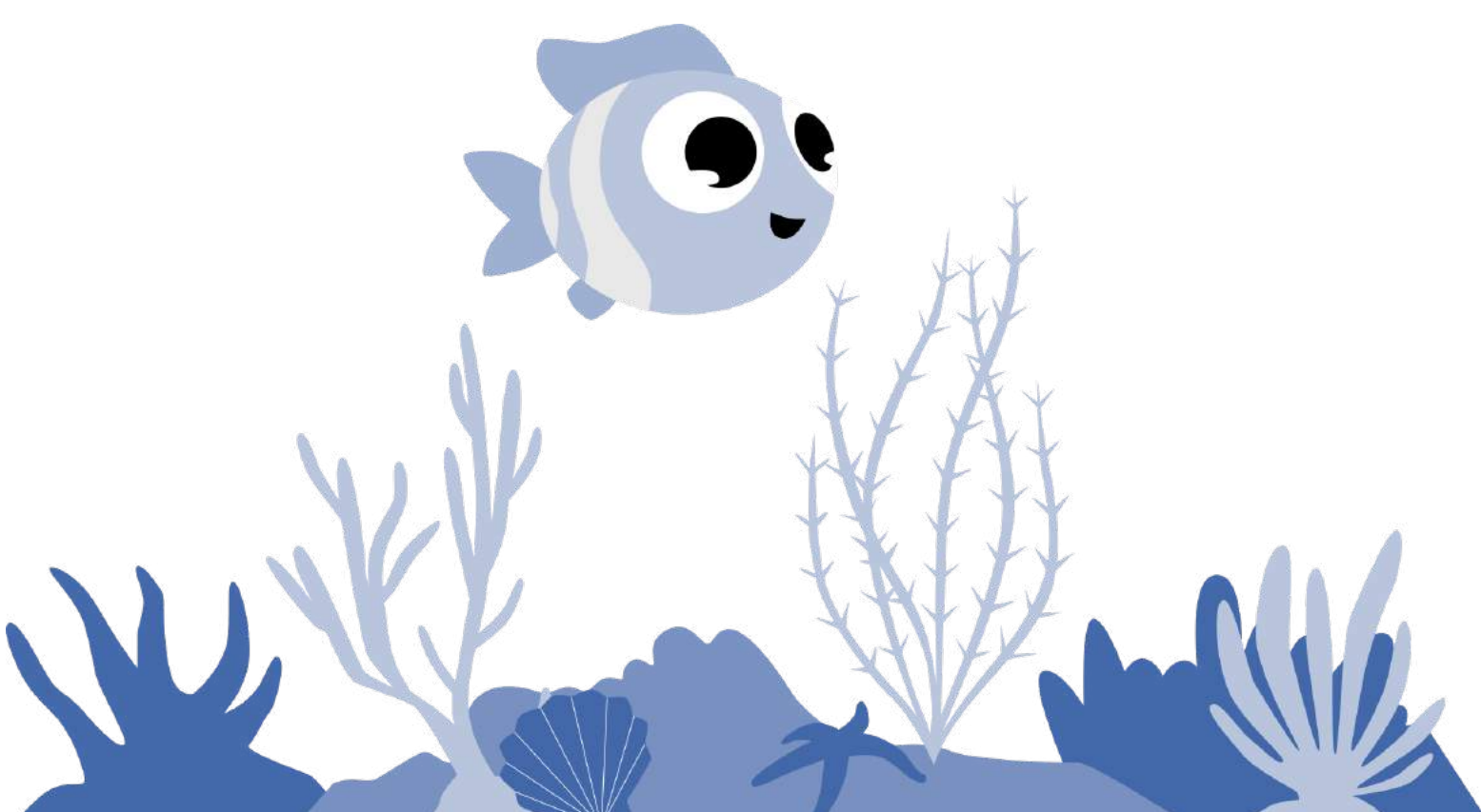
MPAs use scientific data
to inform management
& policy

WE ARE ONE BLUE PLANET

Against a backdrop of climate crisis, we believe that we are the last generation that can really make a difference. To protect our coral reefs and marine environments, we first need to bring together the right resources - people, technology and funding. Only by working together as the human species can we begin to protect the other 99% on our one blue planet.

LOOKING INTO THE FUTURE

The effectiveness of MPAs varies per country, depending on multiple factors including the establishment of a site-specific long term management strategy and allocated resources for its execution and enforcement. Through a volunteer-based scientific diving program, Reef Rangers will help to collect and analyse biophysical data on locally-managed reef resilience and offer support to local and regional management units to scale up proper marine protection.





WHY SUPPORT CORAL REEFS?

Coral Reefs cover less than 1% of our ocean's floor, but support over 25% of our marine life. Over half a billion people depend on reefs for food, income, and protection. They are also a source of new medicines.

Reefs protect coastlines from storms and erosion, provide jobs for local communities, and offer opportunities for recreation. Diving and snorkeling on and near reefs add hundreds of millions of dollars to local businesses. These ecosystems are also culturally important to indigenous people around the world.

Unfortunately, we have already lost or severely damaged more than 50% of coral reefs worldwide. Studies estimate nearly all reefs will be at risk by 2050 unless action is taken now to reduce the threats.





A GLOBAL RESTORATIVE MODEL

As a global organization, our main focus is to restore coral reefs by planting corals, but moreover by supporting the next generation of marine conservationists to regularly monitor coral reefs and educating others on the importance of this ecosystem.

When Reef Rangers was first established it was built on the relatively new idea of 'Citizen Science', a premise that anyone can be trained to collect meaningful and effectual data. Today, our Rangers play a central role in the success of effective MPA management, and the same need to connect projects with passionate individuals still persists.

Each location and conservation requirements are unique, as well as the resources and team available to implement them. We consider the best strategies applicable and include specialty training to counter particular reef damage, coral species and regional needs.

Reef Ranger



GLOBAL DESTINATIONS



INDONESIA

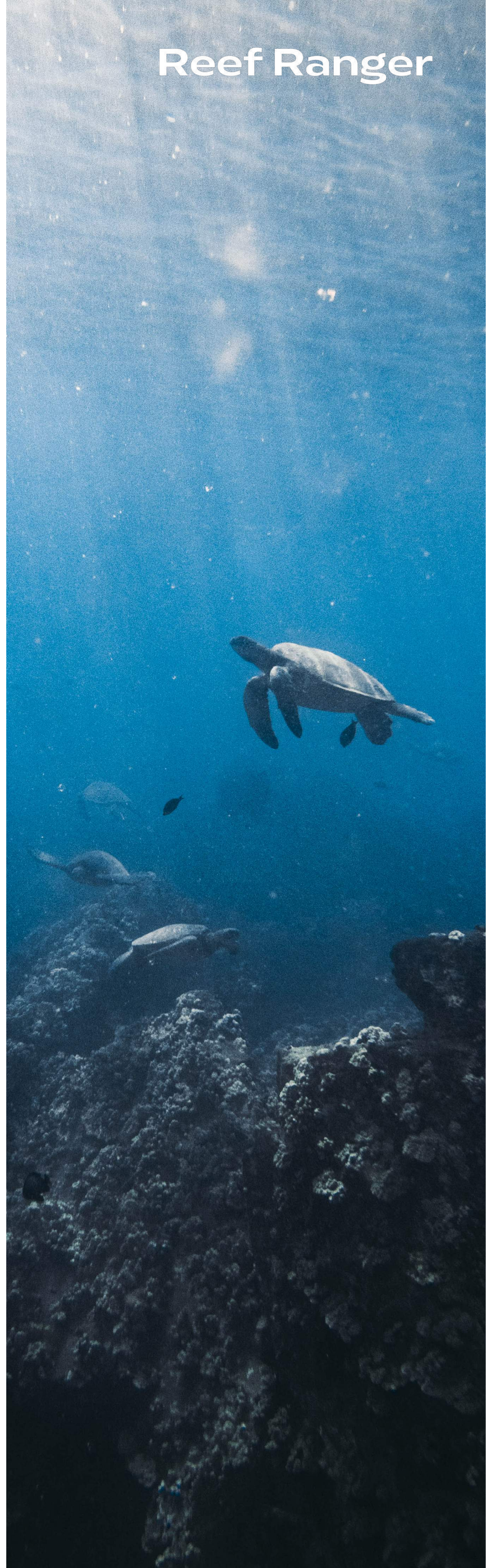
Indonesia is home to the renowned Coral Triangle - the global epicentre of marine biodiversity. If you're looking for a career in marine science or conservation, or just want to develop basic skills and knowledge, then spending a month or two at our coral nursey site in Lombok, the Gili Islands or Bali is perfect place to start.

COLOMBIA

San Andrés and Providencia have 77 % of the coral reefs in Colombia which protect the lives of around 75,000 people that inhabit the islands. We guide Reef Rangers on their journey to help local reef restoration, making you part of the team that is working towards enhancing the resilience of the most important barrier reef in Colombia.

MADAGASCAR

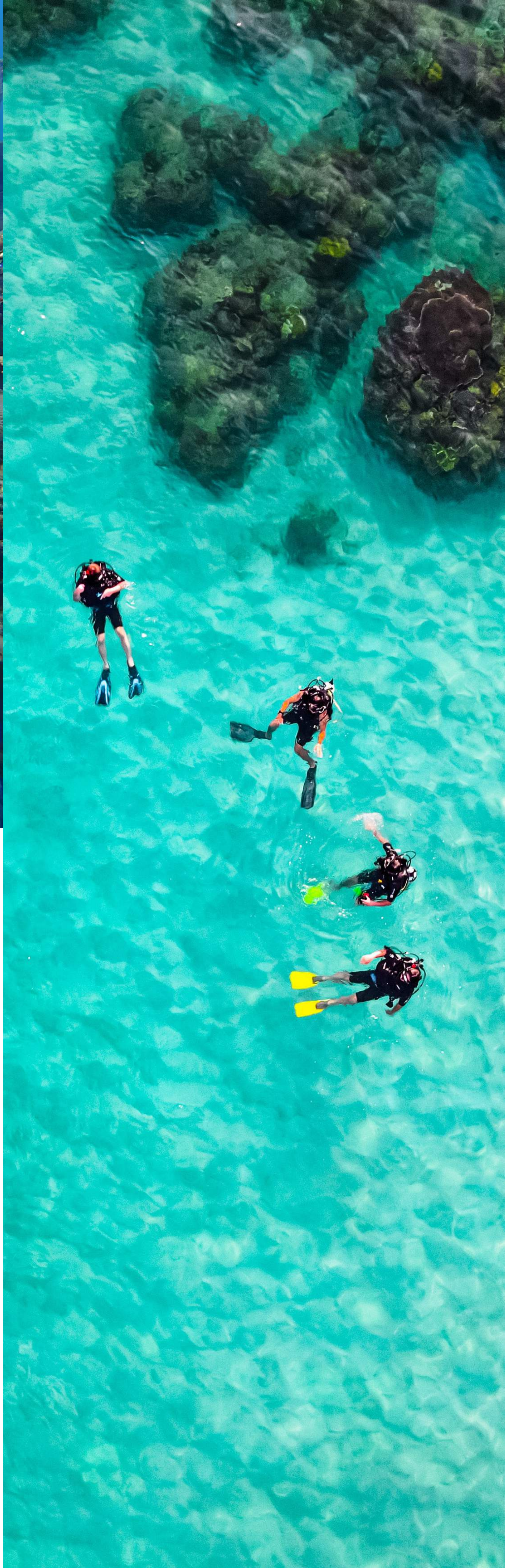
Our Turtle Cove is nestled between a beautiful tropical forest and a pristine beach overlooking Nosy Be and the world famous Lokobe Forest Reserve. Reef Rangers can experience incredible coconut tree fringed beaches with easy access to our home reef, now declared a MPA by the Department of Environment of Madagascar.





CONSERVATION TRAINING

By following the modern techniques in our operations and projects, we actively involve people in research and marine conservation activities. Reef Rangers receive comprehensive training to prepare them to undertake research-based activities at sea. This involves identification training for marine wildlife, including turtles, fish, corals and invertebrates. They are also taught methodology of coral baseline surveying, a key skill in marine conservation as a universal approach to monitoring the state of coral reefs and abundance of marine life.

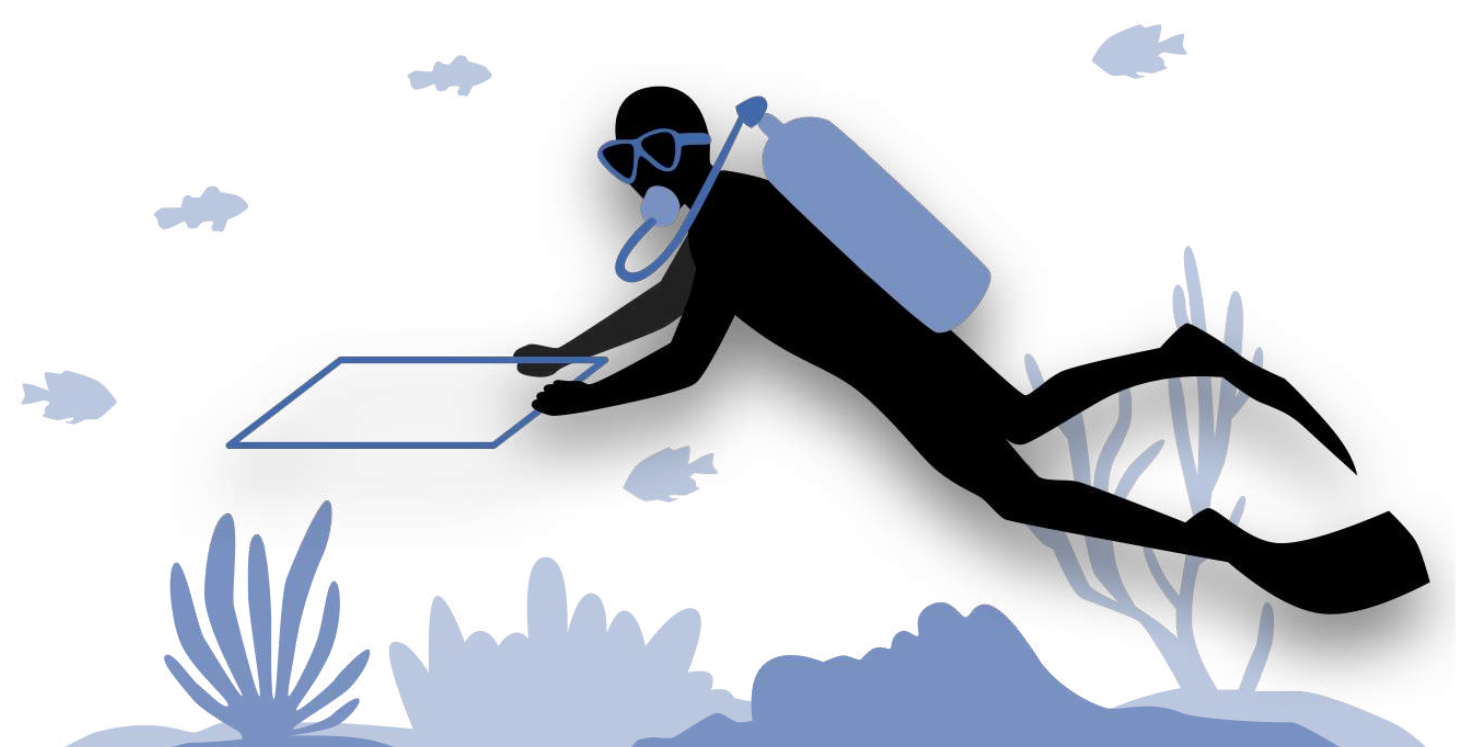




CORAL REEF MONITORING

Ecologically, coral reefs are the feeding, nursery and spawning ground for many marine organisms which makes it sensitive to physical and chemical environmental factors. Reef Rangers will learn to combine commonly used survey techniques, underwater image capture with automated processing tools to dramatically improve how we measure and monitor coral reefs worldwide, particularly in terms of allocating limited resources, rapid reporting and data integration within and across geographies.

Through our online tools made available to participating organizations, Reef Rangers can upload data so that the larger society can benefit from cross-platform open data to support our reefs for the long term. With tools like Open Coral AI and Open Ocean Data, data gathered by Reef Rangers can be visualised in graphs at point locations or in spatial maps. What makes our monitoring tools unique is that they are open and community-based, where several datasets can be combined or compared simultaneously resulting in all kinds of new insights all to better understand our interactions with the open ocean.





CORAL REEF RESTORATION

With help from our Reef Rangers and local partners, we deploy coral fragments and artificial reefs onto an area of previously destroyed reef, where they will provide new habitats for marine life. Our multifaceted approach aims to restore the long-term health of coral reefs, increase their resilience to a changing climate and address the threats that have caused their deterioration.

Corals grown in nurseries (ocean-based and on-land like our coral lab in Indonesia) can survive the warmer oceanic temperatures of the future. Microfragmentation techniques accelerates coral growth up to 40 times the natural rate, and after a planting them, will become a vital part of coastal ecosystems, which ultimately contributes to a vibrant economy. Corals can also hybridize, which increases natural genetic diversity.



Reef Ranger

SCIENCE, RESEARCH & EDUCATION

Today's technologies allow us to explore the ocean in increasingly systematic, scientific, and non-invasive ways. With continuing scientific and technological advances, our ability to observe the ocean environment and its resident creatures is beginning to catch up with our imaginations. We have worked hard to ensure that Rangers don't just come away with amazing stories and lifelong friends but also a materially improved CV and demonstrable skills to educate others around them, back at home.



Reef Ranger



TO RESTORE A THRIVING UNDERWATER WORLD

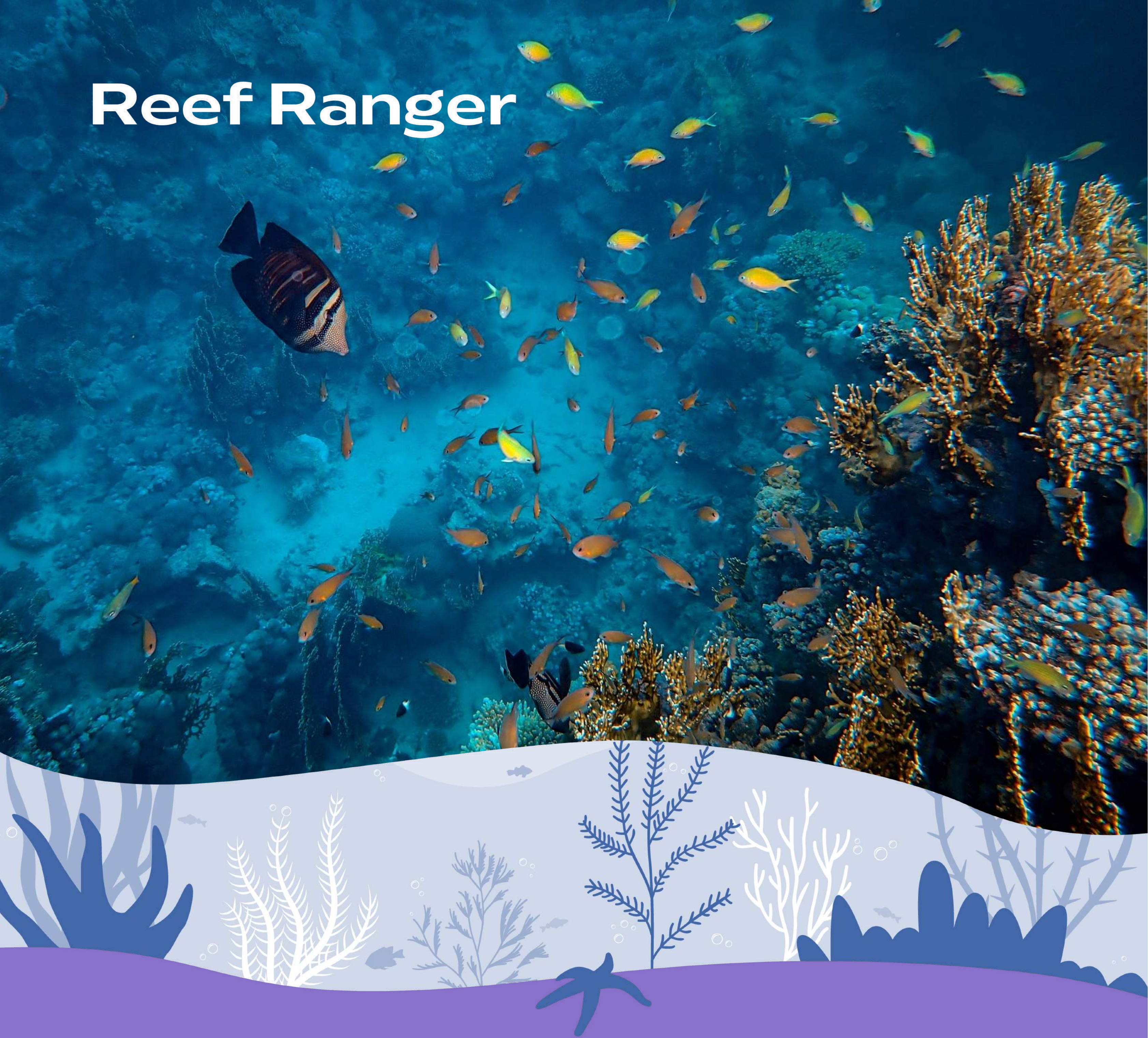
Our success is driven by the importance given to scientific knowledge, social and restorative impact. Partnering with organizations, communities, and authorities, we shape a brighter future for these vital ecosystems that benefit more than 500 million people across the globe. We see that our efforts are catalyzing world-class science and a global network of partners to save imperiled reefs.

The Ranger mission motivates us to implement good diving practices. Diving as a natural conservation tool helps to promote social development in the coastal territories and enhances positive change and resilience. After completing a program, Reef Rangers will forever be part of a tight and impactful community of ocean stewards, supporting the next generation of marine conservationists.

Reef Ranger



Reef Ranger



TO ACHIEVE 10,000 REEF RANGERS
BY 2030 AND TO RESTORE OUR
ONE BLUE PLANET.



www.reef.support/ranger



@reefsupport

#reefranger

hello@reef.support

+31641571462