

**DIMENSIONS:**  
 Length: 328'1" = 100,0 m  
 Breadth: 121'4" = 37,00 m  
 Depth: 23'0" = 7,00 m  
 Loaded draft: 18'3" = 5,55 m

**CAPACITIES:**  
 Deadweight: 15,650 tonnes  
 Lightship weight: 3,025 tonnes  
 Deck area: 3500 m<sup>2</sup> = 37 700 ft<sup>2</sup>  
 Deck unit loads: See "Unit loads" below  
 Deck point loads: See "Allowed loads" below

**ARRANGEMENT AND FORM:**  
 Bulkheads: 5 longitudinal (2non. w.t.), 5 transverse  
 Ballast tanks: 25  
 Bow: Raked  
 Stern: Raked with twin skegs

**MOORING/TOWING:**  
 Anchor: (for emergency use only)  
 One 4400 kg

Towing arrangement: 3 Smit brackets and 3 fairleads,  
 forward - two for main bridle - one for emergency.  
 Main bridle all chain, emergency - chain and wire.

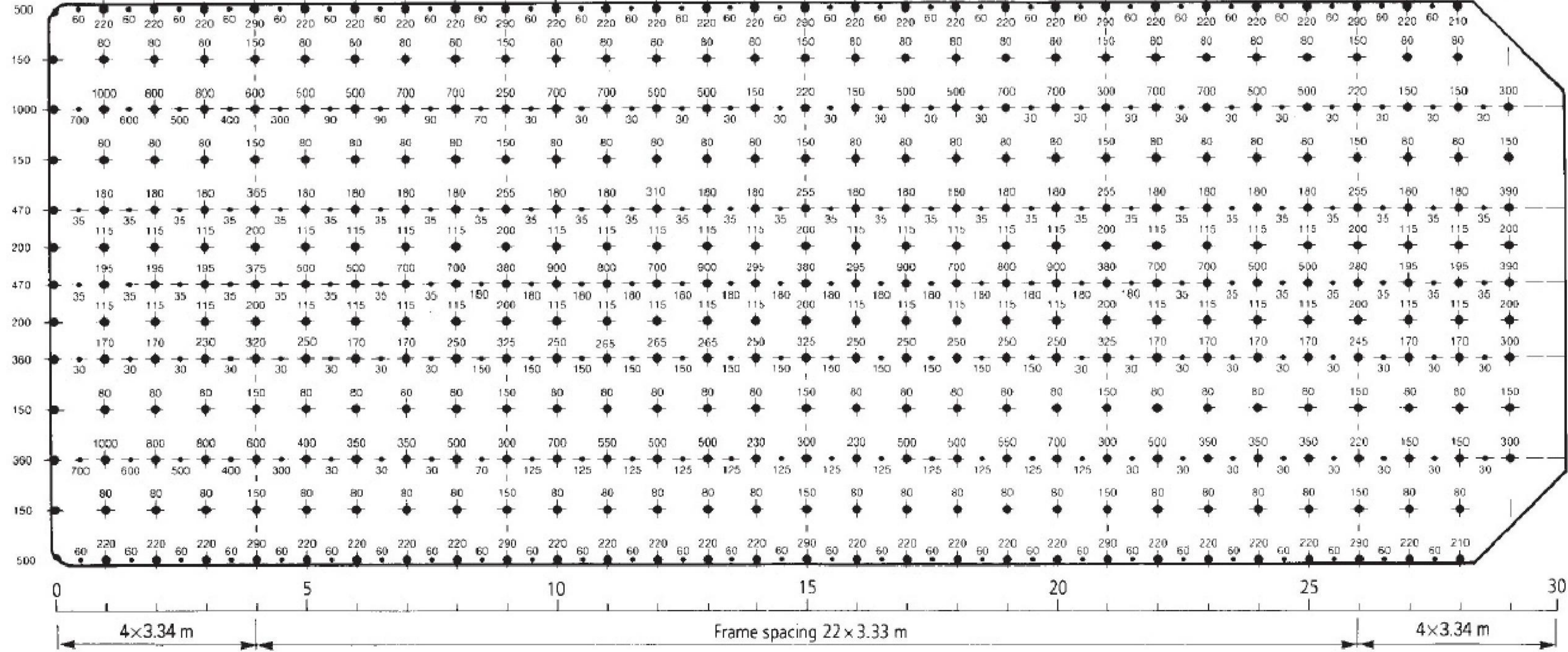
Bollards: Five double bollards each side and two at the bow.

Fenders: The sides are protected by wood and steel fenders.

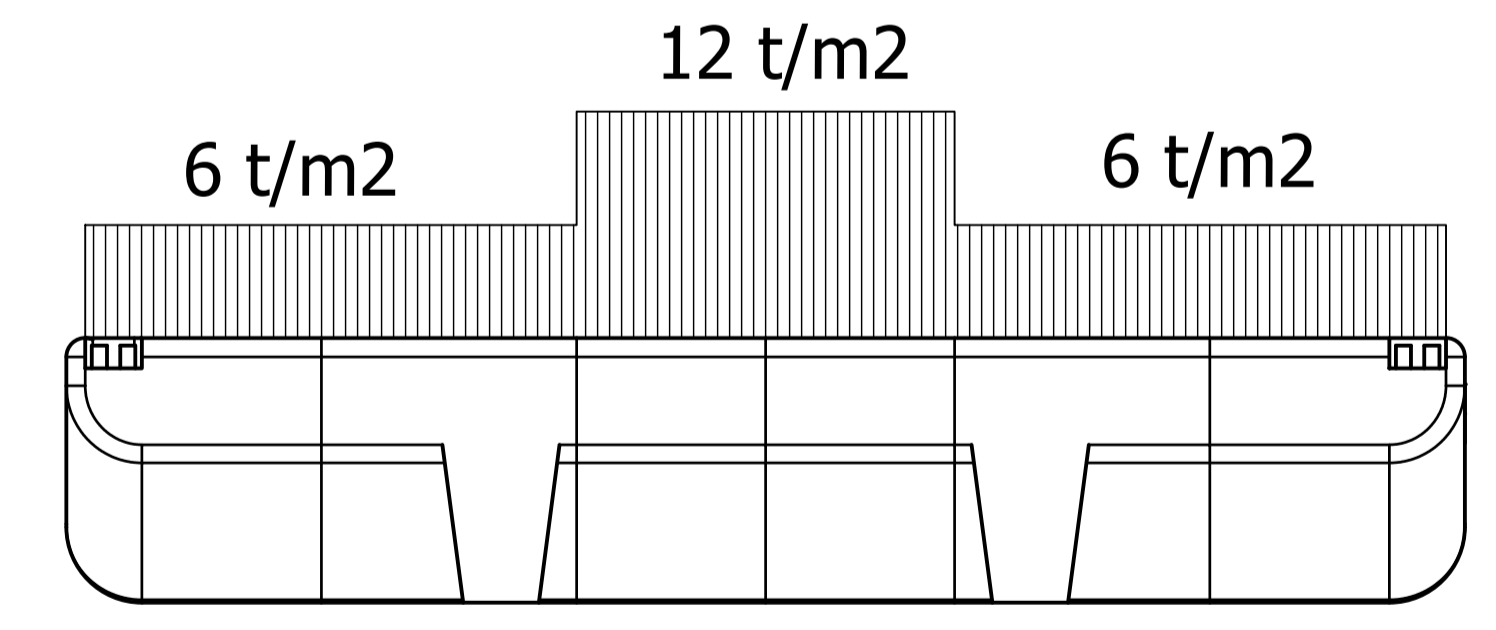
**DESCRIPTION:**  
 A movable deck-house is placed forward. The top of the lower deck house provides a platform upon which electrically driven windlass is located. The engine room is located above the windlass deck. It contains a diesel-electric power unit and a diesel driven air compressor. This arrangement makes total submersion of the pontoon possible without disturbing the electrical equipment.

**ALLOWED LOADS**

UNIFORM LOAD: 12 t/m<sup>2</sup> and 6 t/m<sup>2</sup> static and dynamic ( see figure )



Unit loads ( 1 : 200 )



**Released**

Ritningsstatus: Released  
 Sammenstilling ritningsnummer:  
 Generell svets: A-mått  
 0,7xTmin  
 Generell yjämnhet: Ra



Modellens teoretiska massa, kg	Blad 1/1	Form A1
Beskrivning: Marine Group	Arbetsnummer: 105-023	Skala: 1:200
Carrier 17	Skapad av: JJN	Skapad datum: 2020-01-30
Generell svets: A-mått	Kontrollerad av:	Kontrollerad datum:
Tol. för ej toleranssatta mått: S5-150 2768-1	Erställt av:	Erställt datum:
Generell yjämnhet: Ra	Ritningsnummer: 105-023-101	Revision:

GENERAL ARRANGEMENT