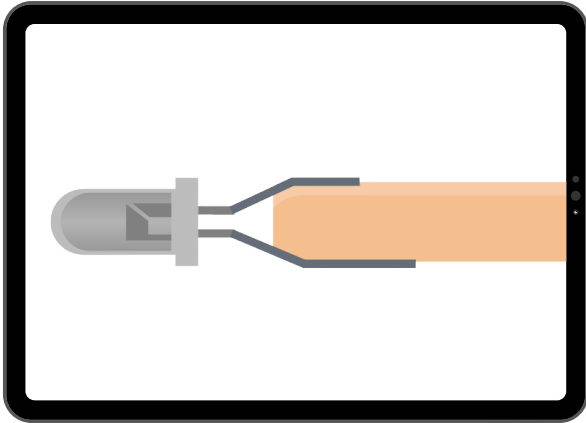
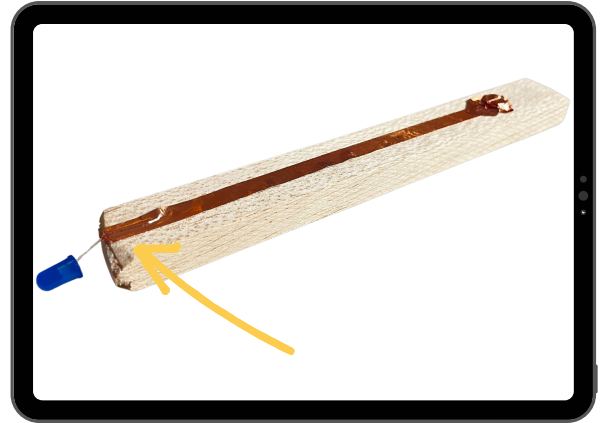




Step-By-Step



1. Place LED LIGHT on end of WOOD.
**Will have to bend wires



2. On side with LONGER LED WIRE,
Place COPPER TAPE along middle
**Tape must cover/start at LED wire



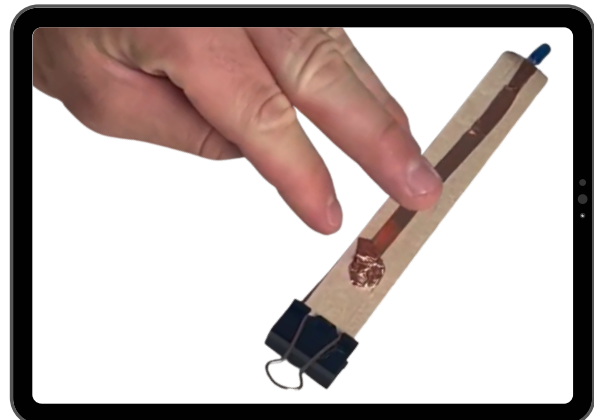
3. ABOUT 1" from bottom, take the rest of tape in the strip and MAKE A PILE



4. Attach a binder clip to the wood, OPPOSITE OF LED light



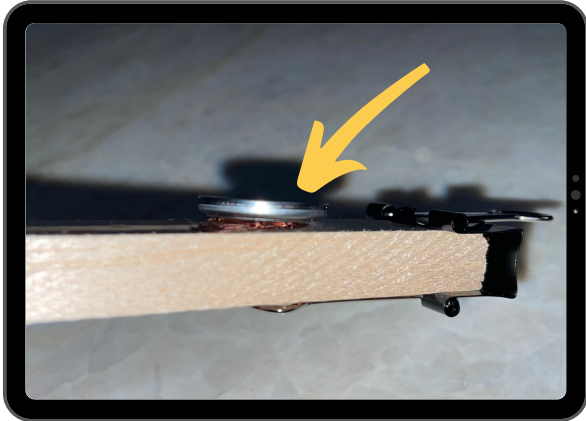
5. FLIP STICK OVER...drop metal hammer and make a little dot in middle of the loop.



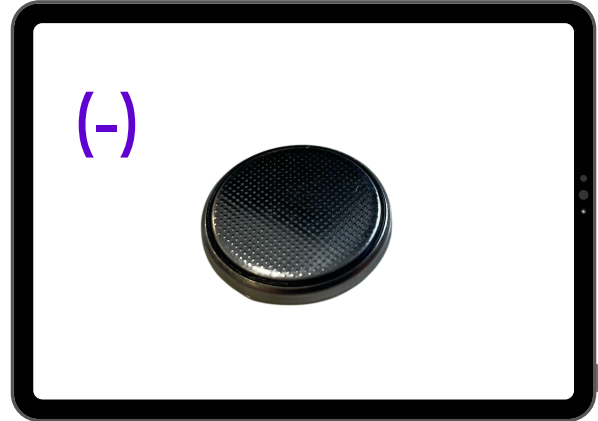
6. Place Copper tape on this side, and MAKE A PILE with extra tape on the dot you drew.



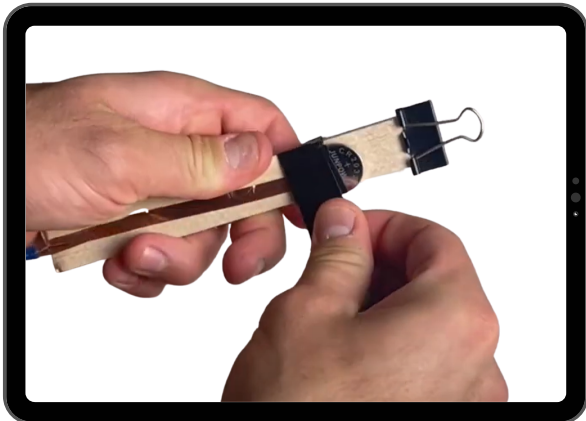
Step-By-Step



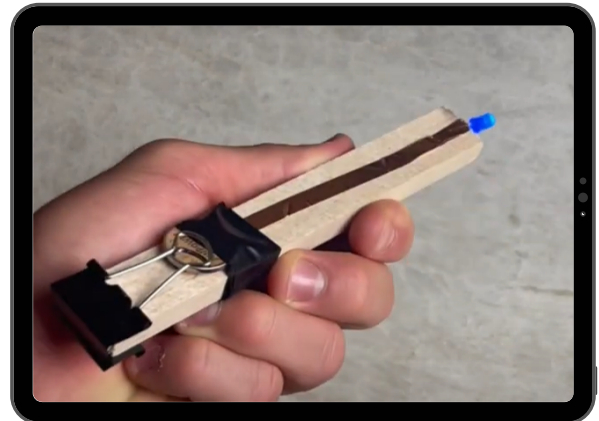
7. Place battery on top of tape with the **NEGATIVE SIDE DOWN!!**



8. This is what the **NEGATIVE SIDE LOOKS LIKE :)**



9. Put a little bit of tape onto the battery to hold it in place!



10. Drop the other side of the binder clip!
****MAKE SURE TAPE STAYS AWAY FROM METAL HAMMER & BATTERY!**



11. **DECORATE / CUSTOMIZE** your flashlight!!

Will it work with 2 LEDs?

